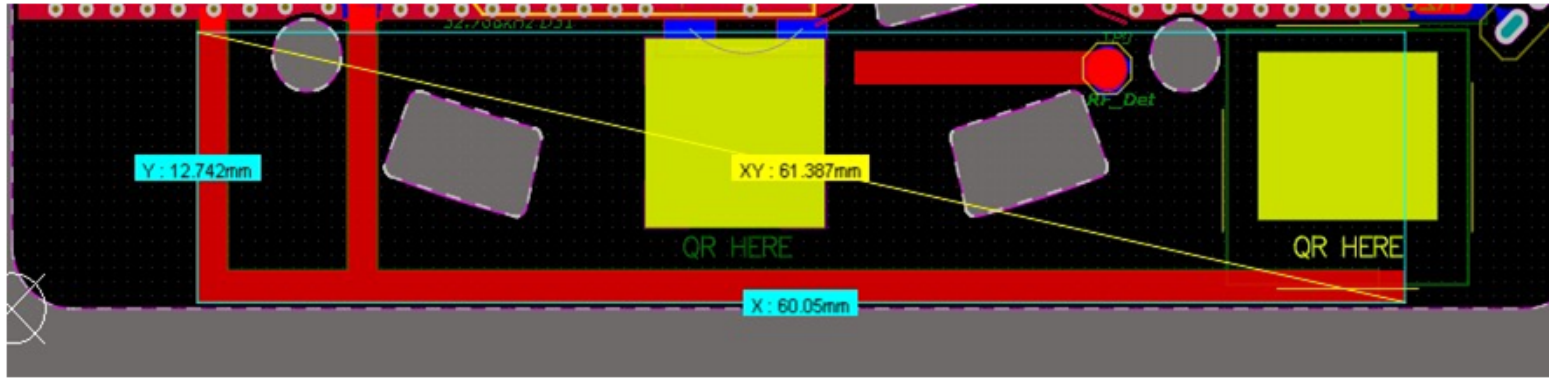


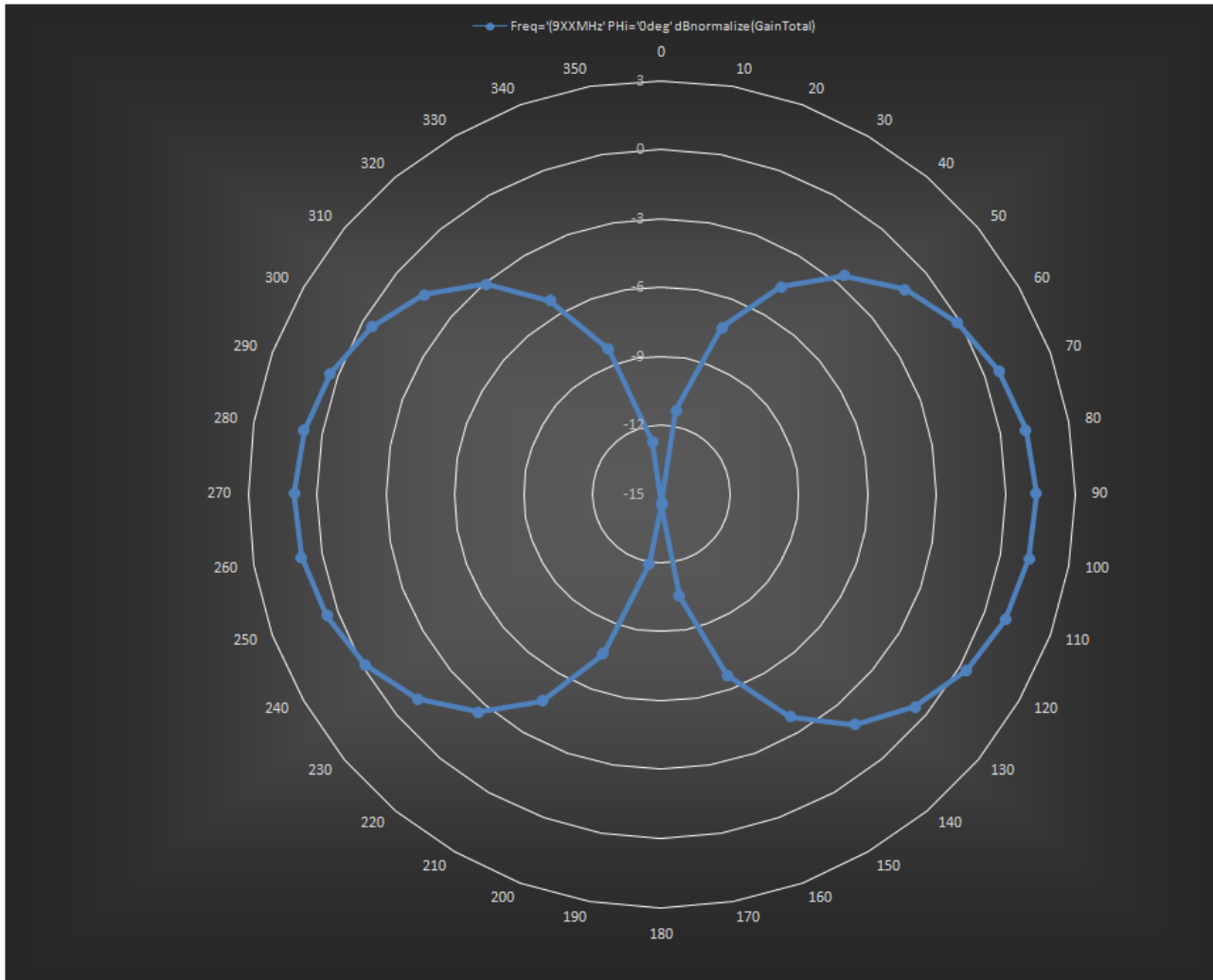
Angle, degrees		Freq='9XXMHz' Phi='0deg' dBnormalize(GainTotal)	Freq='9XXMHz' Theta='90deg' dBnormalize(GainTotal)
		Z-X plane	X-Y plane
0		-15.4	-1.17
10		-11.3	-1.18
20		-7.3	-1.17
30		-4.6	-1.15
40		-2.6	-1.12
50		-1.14	-1.09
60		-0.09	-1.06
70		0.65	-1.04
80		1.12	-1.04
90		1.32	-1.05
100		1.27	-1.09
110		0.96	-1.14
120		0.35	-1.2
130		-0.59	-1.3
140		-1.9	-1.35
150		-3.8	-1.42
160		-6.6	-1.47
170		-10.5	-1.5
180		-14.5	-1.51
190		-11.9	-1.49
200		-7.6	-1.45
210		-4.6	-1.38
220		-2.6	-1.3
230		-1.13	-1.22
240		-0.12	-1.13
250		0.5	-1.05
260		0.9	-0.98
270		1	-0.93
280		0.8	-0.91
290		0.33	-0.91
300		-0.44	-0.93
310		-1.5	-0.97
320		-3.1	-1.01
330		-5.3	-1.07
340		-8.3	-1.11
350		-12.7	-1.15
		-15.4	-1.18

Freq, MHz	Antenna avg gain dBi
905	0.8
915	0.87
926	1





Z-Y plane norm.



X-Y plane norm.

