

Hard floor cleaner BMFC01 Manual Instruction

Model No.: BMHC01



Instruction Manual

Contents:

- Safety Instruction
- Product introduction
- Installation
- Daily maintain & installation
- Common faults
- Specification

Safety instruction

About the manual

- Please follow the manual instruction to install the machines and keep this manual instruction. If you transfer the product to any third party to use, please attach this manual instruction. Any discrepant operation might lead to the damage of the product or possible personal hurt.
- We would be free of any charge if there is any loss due to operate not according to the manual instruction.

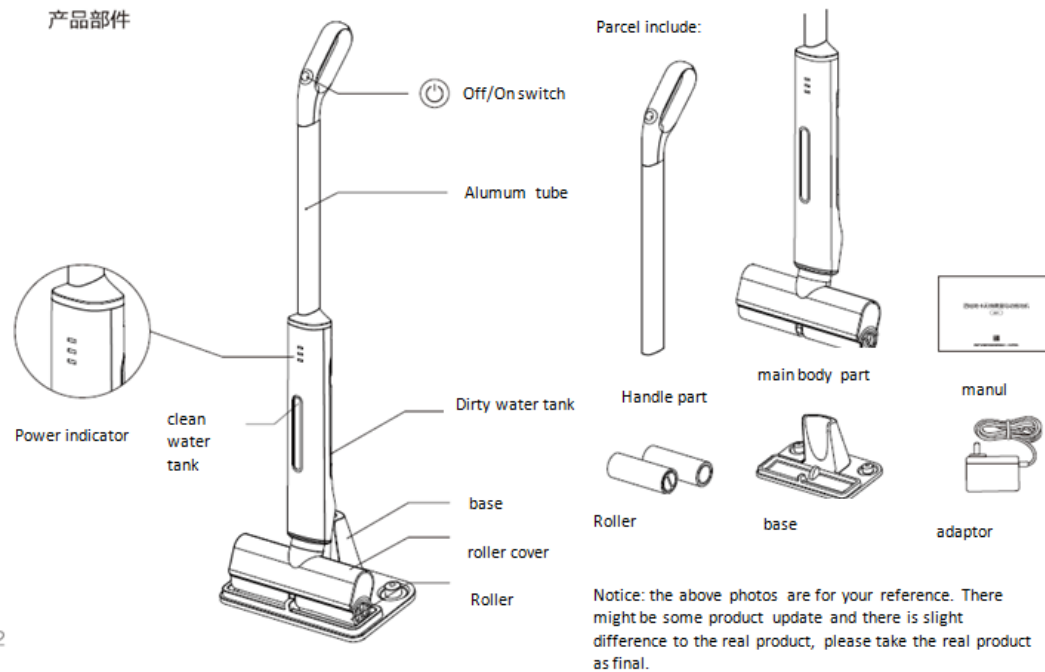
Product Safety Instruction

- When you clean or maintain the machine, do take the plug out.
- The product is assumed to be used at home, not for commercial or industrial use.
- The product is assumed to be used on hard floor, including rubber floor, marble floor, granite floor, terrazzo floor, solid wood floor, composite floor, bamboo floor, and all kinds of mirror surface tile, Porcelain tile etc which has a flat surface. This product effect might not be so good on the none-flat surface.
- This product is not suitable to those who is capable on physical, Psychological (including kids).
- Don't touch this electrical part with wet hands in case of any risk
- Don't use this machine near to the heater, or stove which are too hot in case of machine plastic deformation.
- Don't wet the machine body in case of any risk of water inlet and then leads to fire, or electric shock etc.
- When using this machine, if there is situation like too much heat, or strange noise, or bad smell come out, please stop to use this machine immediately.
- When the plug is damaged, please don't use the machine and ask for the after sale service for further help.
- Please use our original adaptor for the charging and don't use other brand adaptor which might lead to some damage to the circuit and

cause fire risk.

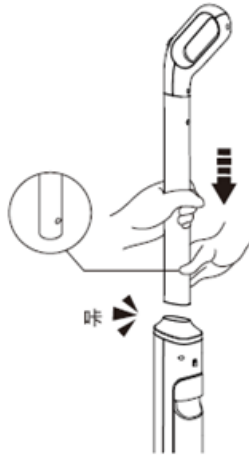
- If you don't use this machine for a long time, please turn off this machine and take off the plug.
- When you finish using the machine, make sure clean the dirty water tank in case of any risk of dirty block.
- There are electrical parts on the body and lower brush, please don't immerse whole machine into water.
- Please don't try to disassemble the machines and try to use this machine for other purpose, which might cause the damage of the machine.
- Please use the correct voltage range to use this machine, the voltage range is indicated in the rating label.
- When cleaning the stairs, please make sure you hold the machine well in case of any falling down.
- After using the machine, please put the machine on the body.
- Please equip the water tank(clean water and dirty water) well before using.

Product parts introduction:

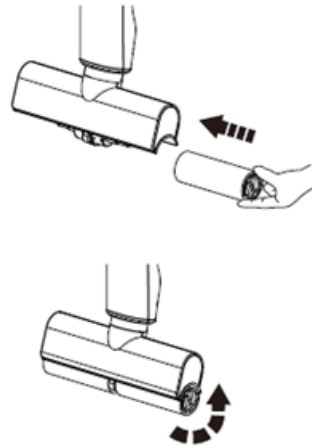


The install of the machine:

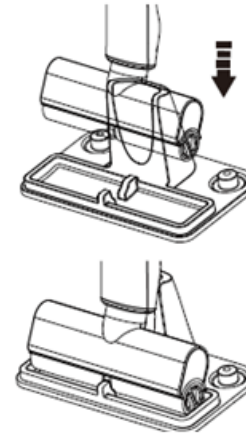
The stall of the handle part as below



- Upright the machine, and inset the alumum tube into the main body, there is voice like "Click", means it install well.



- Left/Right roller matches the color when installing.



- Put machine upon the body

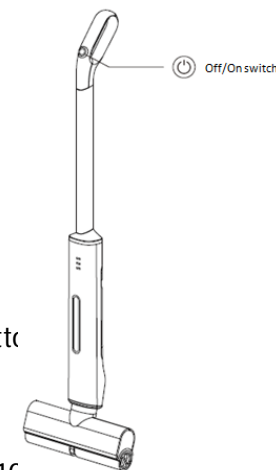
How to use this machine:

Preparation when you start to use the machine, includes:

- Please make sure that the machines install well and check whether the battery power is enough.
- Please make sure that there is clean water in the clean water tank.

Start to use:

- Switch on the machine after adding the clean water into the "clean water" tank, press the switch butt...
- Hold the handle and move the machine on the hard floor and do the mopping.
- Press the switch again to turn off the machine.
- When the machine finish working, please clean the dirty water tank and clean water tank, and add 1C...



machine work, which

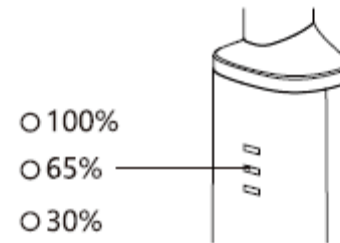
the base and then put

- Take off the rollers and dry them on the base.

Start to use:

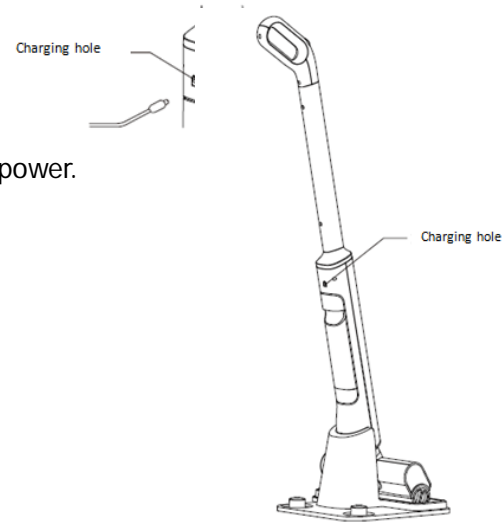
Power indicator:

- Power indicator lighting, indicates: 100%, 65%, 30% of the power
- Three lights power range <100%, >65%.
- Two lights power range: >30%, <65%.
- One light power range: <30%.
- Three lights twinkle: nearly no power and need to charge immed



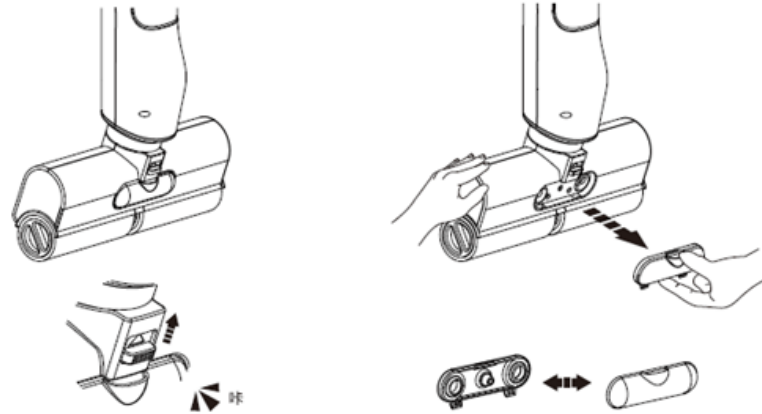
Charge:

- Insert the adaptor to the machine, and connect with the power.



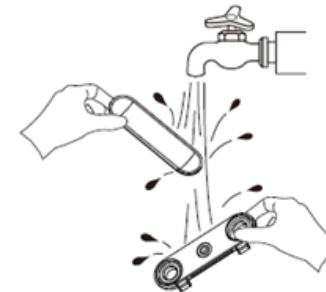
Daily maintains and installs:

Roller cover detach and install:



- If you want to take out the roller cover, please use the finger to press as above, and then take the cover (as photo indicated):
- When you install: match the direction of both sides and press inside, hearing the voice of clicking, it means the cover is well installed.

Roller cover cleaning: when you see that the cover is dirty, please clean it.

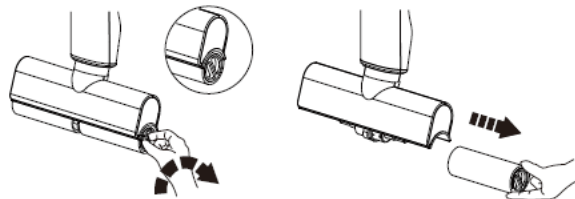


- Take out the cover, and clean it with water, and then put it back after cleaning.

Daily maintains and installs:

Roller detach and install:

- If you want to take out the roller, just as photo below, and take it out.

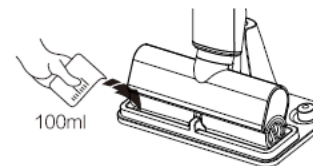


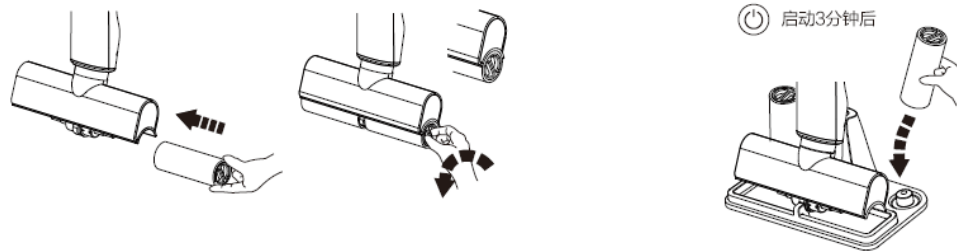
- Install: roller color matches and insert the roller and rotate a little.

Roller cleaning:

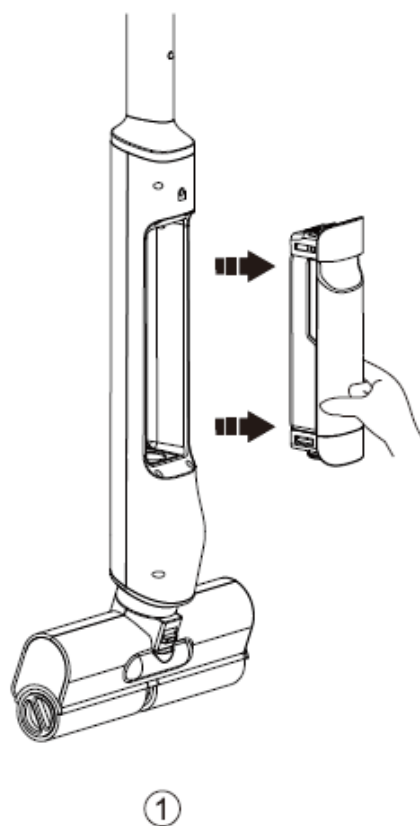
We suggest that you clean the roller every time after use:

- Put the machine on the base after you finish use, add 100ml ~150ml water into the base and switch on the machines and let it work around 3 minutes to let the roller do the self-cleaning. After that, please take out the roller and dry them on the base.





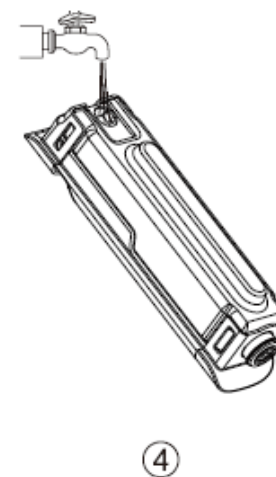
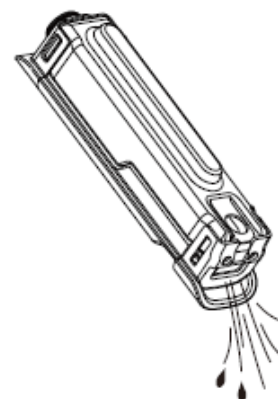
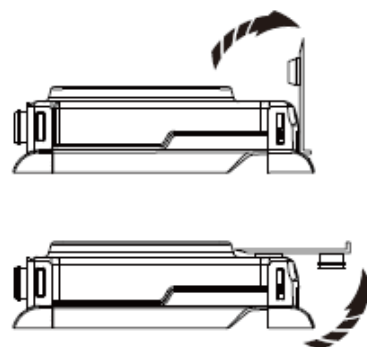
Daily maintains and installs:



- Press the handle of the water tank, and pull it outwards.
- Install: put the lower part on the body and then press it into the main body, there is voice of clicking, then the water tank is installed well.

Clean the water tank:

- We suggest that you clean the dirty water tank every time after you use to maintain the cleaning of the machine.



Common faults:

Common faults:	Possible reason	Solution
Product does not work:	1. No power or shorted powered	Please charge the machine
	2. Dirty water tank is fulfilled.	Take out the water tank and clean it.
	3. Roller is blocked by the air things	Clean the roller
	4. If none is as above	Please contact us.
Product is weak in cleaning or water leakage	1. Water tank is installed in the wrong position	Install the water tank again
	2. Roller is blocked by hair things.	Clean the roller
	3. Lower battery	Please charge the machine
	4. If none is as above	Please contact us.
Machine shakes terribly:	1. Roller is not installed well.	Install the roller again.
	2.If none is above.	Please contact us.
Product could not be charged:	1. The adaptor is not collected well.	Please check the adaptor connect well.
	2.If none is above.	Please contact us.
Clean water does not come out:	1. No clean water in the clean water tank	Add clean water
	2. the water tank is not installed well.	Re-install the water tank
	3. If none is above	Please contact us.

Product Spec:

Product	Data
Rated voltage:	DC 11.1V
Rated currence:	3.2A
Battery capacity:	2200mAh
Clean water tank:	400ml
Dirty water tank:	250ml
Charging time:	2-3h
Working time after fully charging:	30min
Product size:	304*250*1220mm
Net weight:	2.5kg

Special Safety Instructions

1. Do not use the hard floor cleaner in the immediate proximity to sources of heat and do not mop hot objects such as cigarette butts or ashes.
2. Always connect the power plug into the socket with dry hands.
3. Before you start using the machine, first remove large or sharp object from the floor in order to avoid possible damages.
4. When disconnecting the power plug, do not pull the cord, firmly grasp the plug.

Cleaning and Maintenance

- Parts of the device must not be cleaned in the dishwasher except the roller.
- To clean the casing, switch the device off and disconnect the adaptor from the socket.
- If necessary, you can clean the casing, filter compartments of the hard floor cleaner, and the roller.
 - Do not use abrasive cleaning agents (scouring agents, diluting agents) because they can damage the synthetic surface of the device.

FCC Caution:

This device complies with part 15 of the FCC Rules. Operation is subject to the following two conditions: (1) This device may not cause harmful interference, and (2) this device must accept any interference received, including interference that may cause undesired operation.

Any Changes or modifications not expressly approved by the party responsible for compliance could void the user's authority to operate the equipment.

Note: This equipment has been tested and found to comply with the limits for a Class B digital device, pursuant to part 15 of the FCC Rules. These limits are designed to provide reasonable protection against harmful interference in a residential installation. This equipment generates uses and can radiate radio frequency energy and, if not installed and used in accordance with the instructions, may cause harmful interference to radio communications. However, there is no guarantee that interference will not occur in a particular installation. If this equipment does cause harmful interference to radio or television reception, which can be determined by turning the equipment off and on, the user is encouraged to try to correct the interference by one or more of the following measures:

- Reorient or relocate the receiving antenna.
- Increase the separation between the equipment and receiver.
- Connect the equipment into an outlet on a circuit different from that to which the receiver is connected.
- Consult the dealer or an experienced radio/TV technician for help.

This equipment complies with FCC radiation exposure limits set forth for an uncontrolled environment.