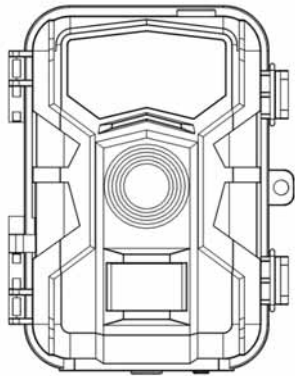


Digital Trail Camera KH-753



WIFI & APP Model

USER MANUAL

TABLE OF CONTENTS

1. GENERAL INFORMATION	1
1.1. Introduction	1
1.2. Application	2
1.3. Illustration	2
2. QUICK START	5
2.1. Batteries	5
2.2. Insert TF Card	5
2.3. Enter "SET" Mode	6
2.4. Enter Live Mode	7
2.5. Mounting camera	7
2.6. Connect APP with WIFI	7
3. ADVANCED SETTINGS	8
3.1. Parameter Settings	8
3.2. File format	12
4. WARRANTY	13
5. Appendix I : TECHNICAL SPECIFICATION	14
6. Appendix II : PACKAGE CONTENTS	17
7. Appendix II : FAQ	18

1. GENERAL INFORMATION

1.1. Introduction

The Trail Camera (also called Scouting/hunting camera) is a scouting device. It can be triggered by sudden change of ambient temperature caused by any movement of human (or animals) in a certain region of interested (ROI), which is detected by a high sensitive Passive Infra-Red (PIR) sensor, and then captures high quality pictures or records HD video clips automatically.

The camera can be connected with APP by WIFI, you can set the camera, view and download photos/videos in the APP.

The camera can achieve more applications through Timer, PIR Interval and other function settings.

Main Features:

- Wireless transmission: WIFI
- Free Android&iOS APP
- Lens: F=2.0, FOV=60°, Auto IR-Cut
- 48 Mega Pixels
- 4K Full HD Videos with Sound
- 2.0" Color View Screen
- Camo Finish
- 65ft/20m Detection Range
- 0.2 Second Trigger Speed
- Invisible "Night Vision" Infrared LED
- 65ft/20m IR Flash Range
- Automatically adjusts IR Flash for Perfect Night Photos
- 3 Multi Shot Images (Adjustable)

1

- Selectable Start / Stop Timer
- Timelapse Plus Camera Mode
- Programmable PIR Delay (1 sec. – 60 min.)
- Picture info bar displays: Time, Date, Temperature, Moon Phase, Camera ID
- Multilingual Programming Menu
- 6 volt External Power Jack
- Supports up to 512GB MicroSD Card (not included)
- Cycle Storage
- Micro USB Port, Micro SD card slot
- ¼"-20 Tripod Socket
- Compact Case Size: 144.5*110.5*74mm
- Waterproof IP66
- Long battery life from 8 AA Batteries (not included)

1.2. Application

- For hunting, trail animals' trace or habit.
- For wildlife observing and researching, captures pictures and videos of wild animals.
- As sports camera, for riding, driving, camping or exploring
- As Motion-Triggered security camera, for home, office and community.
- All other indoor and outdoor surveillance where invasion evidence needed.

1.3. Illustration

- Figure 1-1 shows the front view of the camera
- Figure 1-2 shows the bottom and the side view of the camera
- Figure 1-3 shows the back view of the camera
- Figure 1-4 shows the inside view of the camera

2

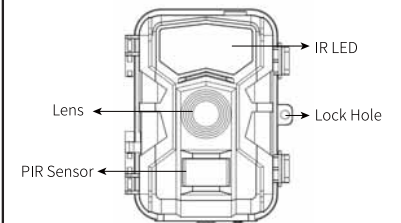


Figure 1-1: Front View

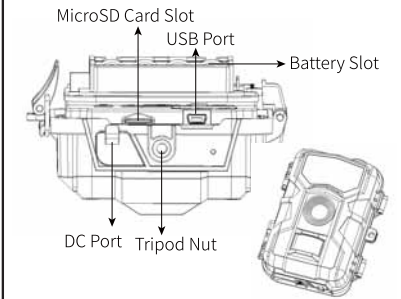


Figure 1-2: Bottom and Side View

3

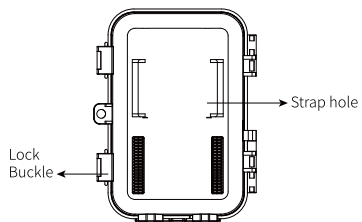


Figure 1-3: Back View

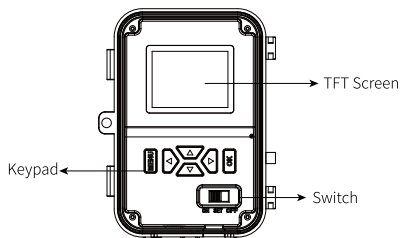


Figure 1-4: Inside View

4

Note:
1) The camera provides the following connections for external devices: USB port, TF card slot, and external DC power in jack. The 3-way Power/Mode Switch is used to select the main operation modes: **OFF**, **ON** and **SET**.

2) LED lights Indicator: red light for PIR monitoring.

2. QUICK START

2.1. Batteries

To supply power, it is recommended to use 4xAA or 8xAA high-performance alkaline batteries. Make sure the polarity matches the sign on the cover.

If you are not using the camera for an extended period of time, please remove batteries from the camera to avoid possible acid leak that may damage the camera.

Alternatively the camera can run on external (6V/2A) DC power supply, solar power supply etc.

On "SET" mode when battery power level gets low, the message "Low Battery" will show on TFT screen.

2.2. Insert TF Card

The camera does not come with internal memory. So it will not work without a TF memory card. Before inserting the TF card into the card slot, The supported memory capacity is up to 32GB. If you use a card capable of above 32GB, make sure you test it before putting the camera in use.

2.3. Enter "SET" Mode

Switch to the "SET" position to enter the Set mode. In this mode

5

you can take pictures or video clips like a regular digital camera. or enter the Menu to set up parameters. On the keypad there are four "shortcut" functional keys (see Figure 2-1) working as below:



Figure 2-1: Keypad View

- Press the "UP" key to set the camera to shoot video clips.
- Press the "DOWN" key to set the camera to take pictures.
- Press the "RIGHT" key to manually trigger the a photo or video (depending on the camera setting) will be taken and saved to the TF card.
- Press the "OK" key to review/playback photos/video on the LCD screen. Use "UP" and "DOWN" key to navigate.
- Press the "MENU" key to set up photos and video when review photos/ videos. You can **Delete one/ Delete All/Slide Show/Protect** the photos and videos you want.

2.4. Enter Live Mode

Switch to the **ON** position to enter the live mode. The Motion Indicator will flash green for about 15 seconds and the camera starts working by itself without any manual handling. It will at once shoot pictures or record videos when game or other objects enter the PIR area of the sensor. If the game roams away after entering the PIR area of the sensor, the camera will power off and enter standby mode.

6

2.5 Mounting Camera

In general, you are recommended to place the camera 3 to 6 feet (1 to 2 meters) above the ground.

To avoid potential false triggers due to temperature and motion disturbances, please do not aim the camera at a heat source (i.e the sun) or nearby tree branches and limbs. The ideal direction to aim at is North or South. Also, remove any limbs close to the front of the camera.

2.6 Connect APP with WIFI

2.6.1. Download the free "Wildlife CamPro" app on your smartphone from the App Store (iPhone®) or Google Play® (Android®).

2.6.2. Put the camera switch to **SET** or **ON** mode, the camera's Bluetooth will be activated automatically.

2.6.3. Turn on your smart phone Bluetooth and WIFI, then open the APP, click "Connect camera".

2.6.4. Turn on the Camera WIFI
Click "Step One, Bluetooth on Wifi", the APP will connect the camera by Bluetooth, once it is connected successfully, the camera's Bluetooth ID will show on the "Bluetooth list" of the APP. Click it, the camera's WIFI will be activated, and the camera's "WIFI name and password" will display on the camera screen.

Note: The camera WIFI can also be turned on by long press RIGHT button in SET mode.

2.6.5. Connect APP with camera by WIFI
Click "Step Two, Connect Wifi", your smart phone will search the camera's WIFI, find the camera's WIFI name, input its password to

7

connect the camera. Once it is connected successfully, "Wifi connected" will be displayed on the camera screen.

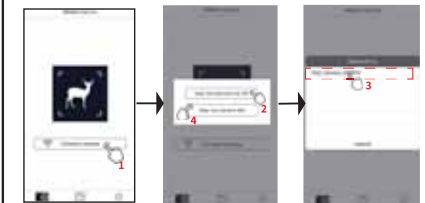


Figure 2-2: operation flow

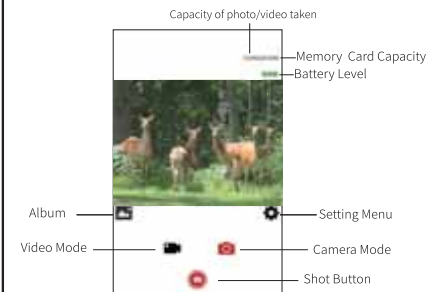


Figure 2-3: App live interface view

8

3. ADVANCED SETTINGS

The trail camera comes with preset manufacturer settings. You can change the settings to meet your requirements. Please make sure that the camera is in the SET mode.

3.1. Parameter settings

Press “MENU” key to enter/exit the menu. Press “UP/DOWN” key to move the marker, Press “LEFT/RIGHT” key to change the setting, and press “OK” key to confirm the change. Always remember to press “OK” to save the change. Otherwise you will lose your new setting.

Parameter	Settings (Bold=default)	Description
Camera Mode	Photo Video Photo+Video	Select whether still photos or video clips are taken. In Photo+Video mode, can first take photos and then shoot videos afterward.
Photo Resolution	48MP 20MP 16MP 12MP 8MP 5MP 3MP 1MP	Select desired resolution for still photos from 3 to 32 mega pixels. Higher resolution produces better quality photos, but creates larger files that take more of the TF card capacity. Besides, larger files require longer time to write to the TF card, which will slightly slow the shutter speed.
Muti-shot	1-3 photos	Programmable from 1 up to 3 photos per trigger

9

Video Resolution	3840×2160P 2688×1520P 1920×1080P 1280×720P 720×480P 640×480P	Select video resolution (pixels per frame). Higher resolution produces better quality videos, but creates larger files that take more of the TF card capacity.
Video Length	5 seconds , (optional from 3s to 3min)	Videos are in AVI format that can be played back on most video players.
Audio recording	on off	The default setting is On, when it is on, the camera can record voice, otherwise, the video will be silent.
PIR Interval	10 Seconds , (optional from 5s to 60min)	Select the shortest length of time that the camera will wait until it responds to any subsequent triggers from the PIR sensor after a game is first detected. During the selected interval, the camera will not take pictures/videos. this prevents the TF card from filling up with too many redundant images.
PIR Sensor Sensitivity	Low Medium , High	Select the sensitivity of the PIR sensor. The High setting suits indoors and environments with little interference, while the Normal/Low suits outdoors and environments with more interference. Temperature also affects the sensitivity. The High setting is suitable when the ambient temperature is warm, and the Low setting is helpful in cold weather.

10

Working Timer	on off	Select On if you only want the camera to work within a specified time period every day. For instance, if the starting time is set at 18:35 and the ending time at 8:25, the camera will function from 18:35 the current day to 8:25 the next day. Outside the time period the camera will not be triggered or take photos/videos.
Time Lapse	on off	If set On , the camera will automatically take photos/videos according to the set interval, regardless of whether the PIR sensor has detected any game. This is helpful when observing cold-blooded animals like snakes, or the process of flowering, etc
Language	Enter	English/Chinese/Francais/Norwegian /German/Spanish/Portuguese/ Japanese/Russian/Finnish/Italian/ Czech/Romanian/Swedish/Slovak/ Polish/Korean
Date&Time	Enter	Press Enter to set up date and time
Photo Stamp	Off Date Date/Time	Select Date/Time if you want the date & time imprinted in every photo. Select Date if you want the date imprinted in every photo. Select Off to stop the date & time imprinted.
Password	on off	Set up a password to protect your camera from unauthorized users.

11

Beep Sound	on off	The sound of the speaker can be turned on or off
Format Memory Card	Yes No	All files will be deleted after formatting the TF card, Highly recommend you format the TF card, if it has been used previously in other devices. <i>Caution: make sure wanted files on the TF card have been backed up first!</i>
Camera ID	on off	Select On to assign a serial number to each camera you have. reviewing the photos. You can use the combination of 6 digits 0-9/A-Zto record the location in the photos (e.g. 123456 for Yellow Stone Park). This helps multi-camera users identify the location when reviewing the photos.
Reset Setting	Yes No	Press OK Enter to return all your previous settings back to the manufacturer defaults.
Auto WIFI OFF	1 minute 2 minute 3 minute	In set mode, if the camera conected the wifi with the App. the camera WIFI will trun off automatically after a desired time.
WIFI SSD	Hunting-Cam	Set or modify the WIFI name of the camera, the default WIFI name is “Hunting cam”.
WIFI Passord	12345678	Set the WIFI passord of the camera

12

Version	Enter	Look through the version of the camera
---------	-------	--

3.2. File format

The camera stores photos and videos in the folder \DCIM\100MYCAM in the TF card. Photos are saved with filenames like DSCF0001.JPG and videos like DSCF0001.AVI. In the **ON** mode, you can use the provided USB cable to download the files to a computer. Or you can put the TF card to a TF card reader, plug in a computer, and browse the files on the computer without downloading.

The AVI video files can be played back on most popular media players, such as Windows Media Player, Quick Time, etc.

13

4. WARRANTY

We take great pride in our products. We always stand behind our promises. We provide a leading warranty term and service. Buying our product, you are covered under a limited warranty.

We guarantee our products to be free of defects in materials and workmanship for a limited warranty of the original purchase date. This warranty does not cover consumer caused damage such as misuse, abuse, improper handling or installation, or repairs attempted by someone other than our authorized technicians.

We will, at our option during the warranty period, repair your camera or replace it with the same or comparable model free of change. This warranty only extends to the original retail buyer from our authorized dealer. Purchase is required to receive warranty benefits. The warranty on any replacement product provided under the original warranty shall be for the remaining portion of the warranty period applicable to the original product.

This warranty extends solely to failures due to defects in materials or workmanship under normal use. It does not cover normal wear of the product.

If you need to return a product under this warranty, please contact your dealer or our distributor.

14

5. Appendix I: TECHNICAL SPECIFICATION

Sensor	Color CMOS sensor
Max.Pixel Size	48MP=7552 x 4248
Lens	F=2.0; FOV=60°; Auto IR-Cut
IR LED	940nm IR LED
LCD Screen	2.0 inch TFT color screen
Keypad	6 Keys, 1 Switch
Memory	Mciro SD Card (Up to 256GB)
Photo Resolution	48MP; 20MP; 16MP; 12MP;8MP; 5MP; 3MP;1MP
Video Resolution	3840×2160P; 2688×1520P; 1920×1080P 1280×720P ; 720×480P; 640×480P; 320×240P
PIR Sensitiveity	Low Medium , High
PIR Sensing Distance	65ft/20m (Below 77°F/25°C at the Normal Level)
IR flash Distance	up to 65ft/20m
Operation Mode	Day/Night

15

Trigger Time	0.2 Second
PIR Interval	5sec - 60 min
Muti-shot	1-3 photos
Video Length	5Sec-5min
Time Lapse	On/off
Photo Stamp	On/off
Timer	ON/Off; Timer Set
Password	4-Digit 0-9; A-Z combination
Camera ID.	4-Digit 0-9; A-Z combination
Beep Sound	On/Off
Video Audio	On/Off
WIFI	Support, 2.4G
APP	Andriod & IOS
Bluetooth	Support, 2.4G
Wireless distance	Approx 50m

16

Language	English/ Chinese/ Francais/ Norwegian / German/ Spanish/ Portuguese/ Japanese/ Russian/ Finnish/ Italian/ Czech/ Romanian/ Swedish/ Slovak/ Polish/ Korean
Power Supply	8×AA/ 4×AA batter
Stand-by current	< 0.1mA
Auto Power Off	Auto power off in 3 minutes while no Keypad controlling
Power Consumption	150mA (1A when IR LED lights up)
Low Battery Alarm	4.5V
Interface	USB; TF Card Slot; 6V DC
Mounting	Strap; Tripod Nail
Waterproof	IP66
Operation Temperature	-20~+70°C
Operation Humidity	5% ~ 95%
Certificate	FCC & CE & RoHS

17

6. Appendix II: PACKAGE CONTENTS

Part Name	Quantity
Digital camera	1
USB cable	1
Camera belt	1
User manual	1

7. Appendix III: FAQ

Question	Answer
Forgot Password /Factory Reset	Long press the OK button and pull the switch to the “SET” position, the camera will be restored to the factory settings. All the parameters (including any passwords) previously set will be cleared. please use it with care.
Night video is unavailable in low voltage	When the voltage is low, the camera works in the ON position, it will turn off the infrared light and continue to take pictures, and the picture shows that there is no night vision function. In this state, you can continue to take color photos during the day.

18

FCC warning:

Any Changes or modifications not expressly approved by the party responsible for compliance could void the user's authority to operate the equipment.

Note: This equipment has been tested and found to comply with the limits for a Class B digital device, pursuant to part 15 of the FCC Rules. These limits are designed to provide reasonable protection against harmful interference in a residential installation. This equipment generates uses and can radiate radio frequency energy and, if not installed and used in accordance with the instructions, may cause harmful interference to radio communications. However, there is no guarantee that interference will not occur in a particular installation. If this equipment does cause harmful interference to radio or television reception, which can be determined by turning the equipment off and on, the user is encouraged to try to correct the interference by one or more of the following measures:

- Reorient or relocate the receiving antenna.
- Increase the separation between the equipment and receiver.
- Connect the equipment into an outlet on a circuit different from that to which the receiver is connected.
- Consult the dealer or an experienced radio/TV technician for help.

This device complies with part 15 of the FCC Rules. Operation is subject to the following two conditions:
(1) This device may not cause harmful interference, and (2) this device must accept any interference received, including interference that may cause undesired operation.

This equipment complies with RF radiation exposure limits set forth for an uncontrolled environment.

This equipment should be installed and operated with a minimum distance of 20 centimeters between the radiator and your body