



MEET | 智宠
智享生活 因缘宠爱

User Guide

Smart Sterilizing Litter Cabin

智能灭菌猫厕所

Please read the user guide carefully before use

目录 CONTENTS

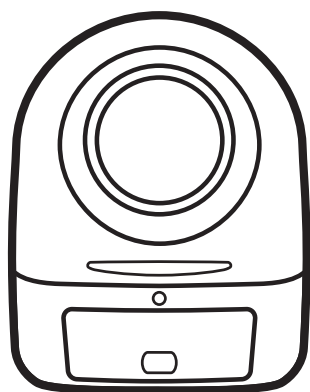
1	Caution	1
2	Packing List	2
3	Introduction & Features	3
4	Vedio direction	5
5	Pre-use Inspection	6
6	Line barbage bin	7
7	Connected to APP	8
8	Key And Light	9
9	APP Specification & Settings	10
10	Tips And Alarms	12
11	Clean	14
12	Product Parameters	15
13	About Us	16

注意事项 CAUTION

Thanks for choosing **MEET | 智宠** smart sterilizing litter cabin, please kindly reading below tips before turn on the machine.

- Please kindly reading user's manual before turn on the machine, when you turn on the machine that means you have already read and follow the instruction.
- We will not responsible for any broke or damage made by user that didn't follow the instruction.
- Please don't use auto mode if cat is less than 1.1kg (or younger than 3 months), and if cat heavy than 8kg, there maybe a little bit crowded.
- Make sure that the cat is not inside or on the top of the device before power on, and during the self-test, make sure that Cats will not enter the machine, affect the gravity sensor and cause danger.
- The app cannot recognize and collect data for different cats now, will updated in future.
- This machine is suitable for small particles of cat litter, such as bentonite cat litter and tofu crushed sand
- Please kindly put the machine on dry, steady and horizon floor, and the floor should not be soft otherwise that will affect the weight sensor.
- Please kindly use the machine in door, and avoid using in hot and moist place, and keep away from direct sunlight, and keep the basement away from water.
- Please kindly change the garbage bags no longer than one week so that will not smelly.
- This product is only suitable for 2.4G Wi-Fi.
- If any problem cannot solve please contact with us.
- Our company has the right of interpretation and modification of this manual.

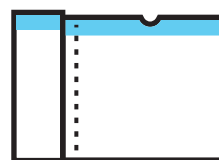
包装清单 Packing List



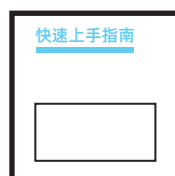
Smart sterilizing litter cabin*1



Power adapter*1



Garbage bag*1

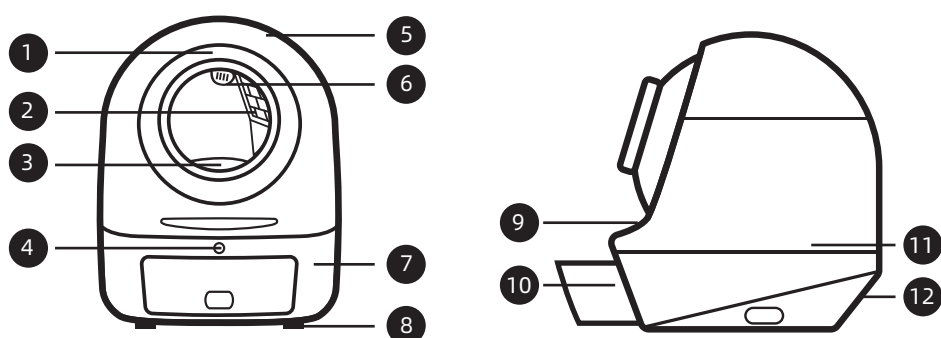


User guide*1



Quick guide*1

产品简介 Brief Introduction



- | | |
|-----------------------------|---------------------|
| ① Ballroom | ⑦ Basement |
| ② Strainer | ⑧ Gravity sensor x4 |
| ③ Anti sticking silicca mat | ⑨ Radar sensor |
| ④ Key panel | ⑩ Garbage bin |
| ⑤ Top cover | ⑪ UV light |
| ⑥ zone sterilizer | ⑫ Power connection |

特色功能 Features

1

99.9% Sterilizing¹ UV+ozone double

Meet intelligent sterilizing cat toilet adopts UV + ozone double sterilization technology. After the pets leave the toilet, the cat toilet will be disinfected from the cabin to the dust box, and the bacteria, parasites and viruses will be inactivated to make them lose vitality and fecundity, and the removal rate is more than 99.9%.

2

Three types of protection

● Firstly: Radar sensor wall system

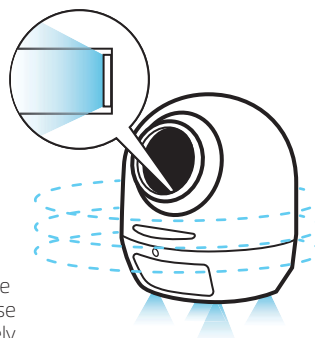
Through the new Radar anti pinch technology, a virtual sensor wall is formed around the cat toilet. As long as the pet is detected to be close, the machine will stop immediately.

● Secondly: Four point gravity sensing system

Four gravity sensor device can accurately identify the entry and exit of pets, and it can only operate after leaving the rear.

● Thirdly: Door sensor system

According to the design concept of the aviation door, a high sensitive anti clamping sensor is added at the entrance of the dust box. In case of foreign matters, the excrement removal work is stopped immediately and the operation is reversed.



3

Tuya global servers MEET PET APP's IOT project

● Powered by Tuya®

This product joins the "powered by Tuya" IOT system², which can easily control each other with different brands and categories of products, and realize the linkage between Meet smart sterilizing litter cabin and other intelligent products. The system enables more than 90000 products, with 500 kinds of enabling products, ranking first in the world.

1-消毒依据及方法：《消毒技术规范》卫生部2002年版-2.1.5.4

2- "Powered by Tuya" 是由涂鸦智能搭建的一个互联互通的智能体系，详细使用方法请登录涂鸦官网www.tuya.com咨询。

视频说明书 Video Direction



Video Instuction

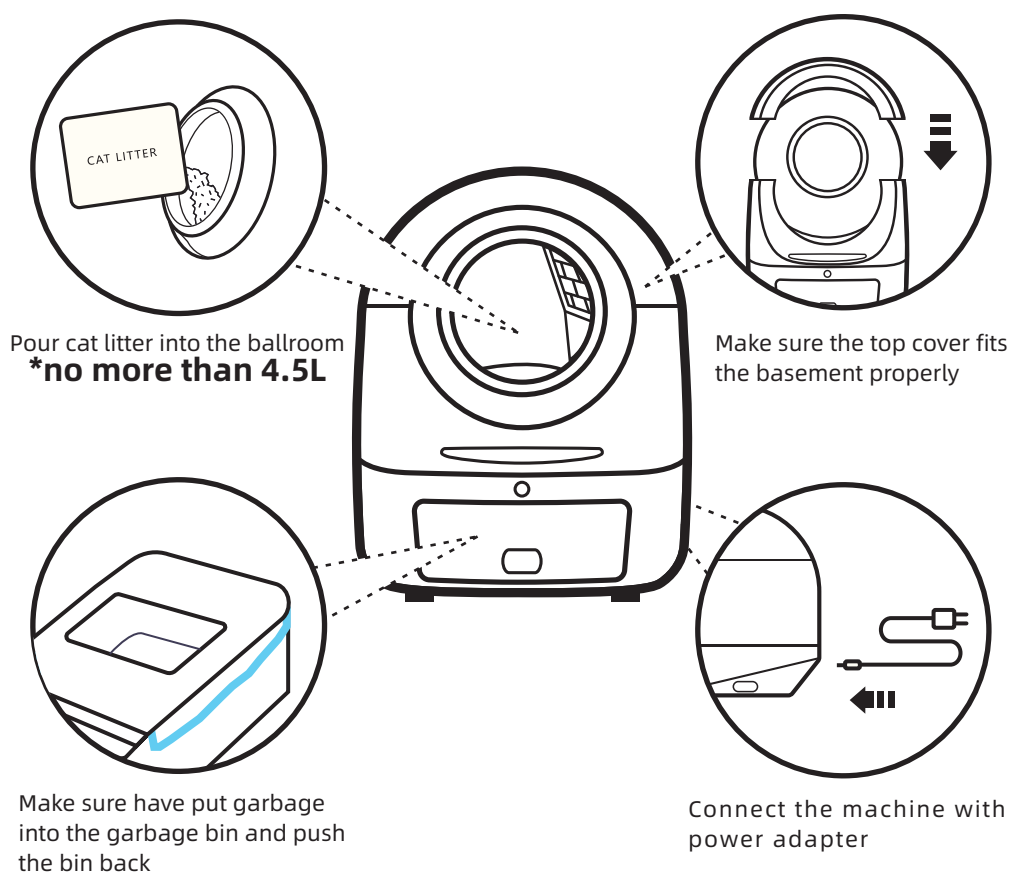
- ☐ Scan the QR code
- ☐ Learn how to use the machine

小贴士 Tips

How to let the cat accept the new toilet?

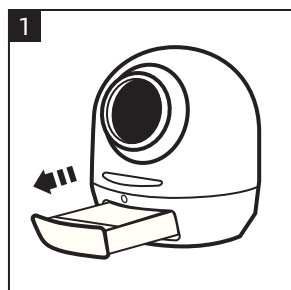
- 1 For the first use, a small amount of used litter can be laid on the surface of the new litter to familiarize the cat with the smell.
- 2 Change it into manual mode when cat first use the machine.
- 3 Operate the machine in front of the cat to let them know its not a threatening thing.
- 4 Reward the cat by placing some snacks nearby the machine.
- 5 Put the new machine nearby the old toilet, do not cleaning the old toilet,cats prefer a clean toilet,they will chose to use the new one.

用前检查 Pre-use Inspection

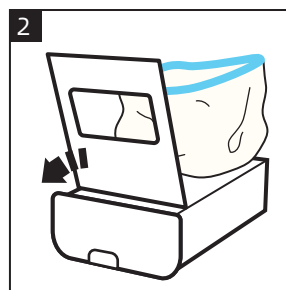


套垃圾袋 Line barbage bin

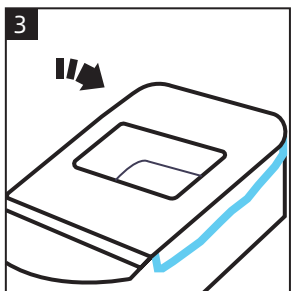
Pull out the garbage bin



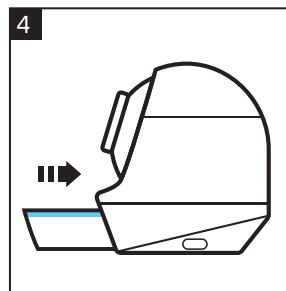
Open the cover and put garbage bag into the bin



Make sure the garbage bag fit the bin edge and cover it back



Push the garbage bin back

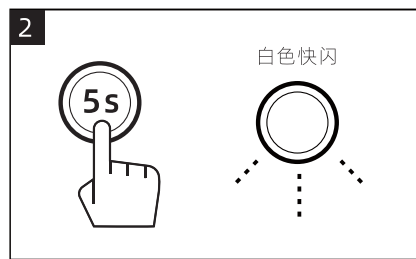


初次联网 Connected to APP

Download MEET PET app
and sign up



After self examination,the indicator
light will blinking quickly in white.If not,
please Press and hold the key for 5 seconds.

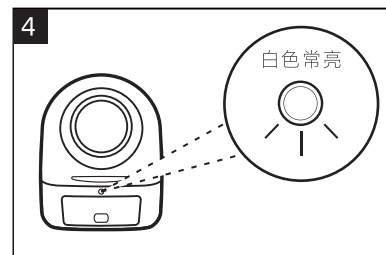


Complete device networking
binding according to APP
content

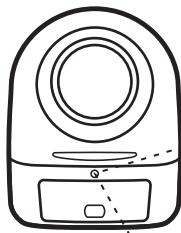


- ①Make sure the machine
get ready for networking.
- ②Keep your phone' wifi
and bluetooth on
- ③Click "+" to search
machine and connect
machine with app

After connect successfully,you will find
the machine on the app and the indicator
light on machine will remain white and on.



设备按键及指示灯 Key And Light



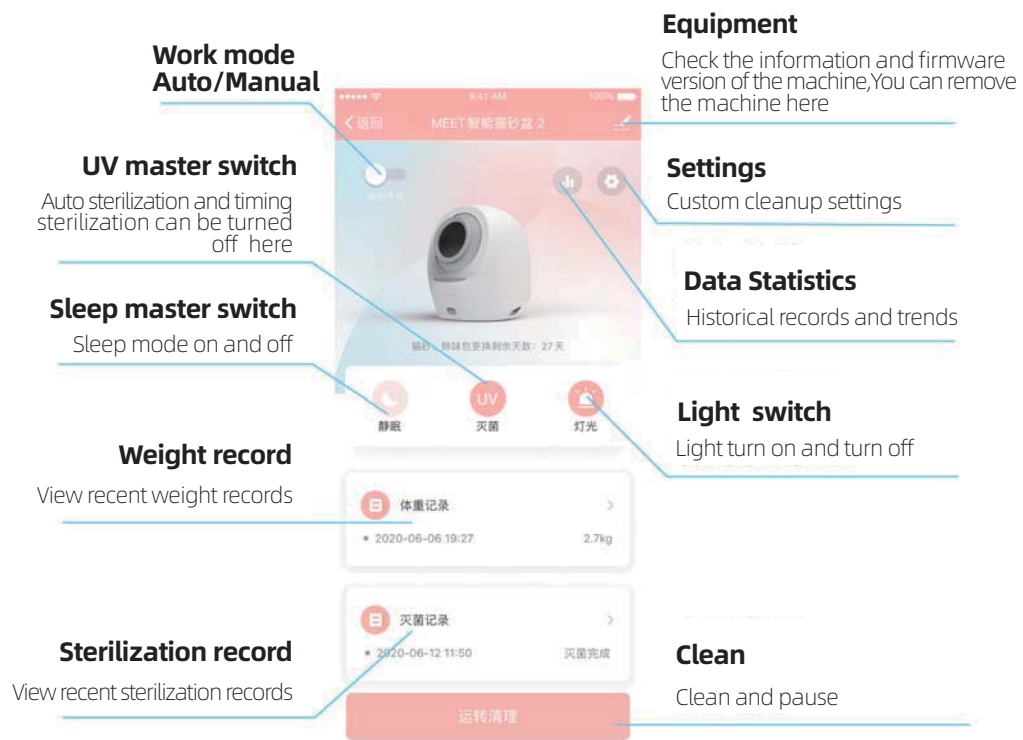
KEY PANEL

Keep press 2 seconds : turn on/off the power
 Keep press 5 seconds: app connection
 Press 1 time: turn on/stop the machine
 Press 2 time: mode change: manual or automatic

LIGHT

	1.White light (no blinking): automatic mode
	2.White light blinking slowly: do not connect with Router
	3.White light blinking fast:waiting for app connection
	4.Orange ligh(no blinking):manual mode
	5.Orange light blinking slowly:garbage cabin is full
	6.Orange light blinking fast:hardware problem
	7.Blue light (no blinking):sterilizing
	8.Blue light blinking slowly:Gravity calibration

APP功能说明 APP Specification



Delayed cleaning

If the cat is timid or the stool is wet, you can set long time from 6 seconds to 20 minutes.

Operating laps

the number of operation cycles can be increased

Sleeping mode

Machine will not work automatic.

Timing sterilization

Set up the timing for sterilization. (this setting does not affect the auto sterilization work)

Timing light

indicator light will turn up on specified time

Power switch

Timing clean

Users can add three cleanup times

Cat litter&deodorant reset

Restore the cat litter and odor eliminator replacement period

Restore factory settings

Restore to system default settings



提示与警报说明 Tips And Alarms

1 Notification setting

1. In automatic mode, the app will send reminder to your phone after the cat use the machine and leave.
2. Sterilization reminder: when it sterilizing, app will send notification to phone.
3. Garbage full reminder: when garbage bin is full, the machine will stop work and send notification to phone.
How to solve it: clean the bin and change the garbage bag--click the "start working" button on app--press the button on machine to restart machine.
4. Failure to work the machine: when the cat inside the cabin, the machine will not work, please start the work after cat leave.
5. Over times for cleaning: if the machine works many times during 24 hours, app will send you notification. Maybe the cat is playing inside the cabin, better go to check to avoid any waste.
6. Machine turn off reminder: the machine is turn off, please turn on it and do operation.
7. Cleaning reminder: for keeping a clean and better environment, app will reminder user every 30 days to clean it.

2 Fault alarm

1.Gravity sensor fault:weight mistake. How to solve:check whether the gravity sensor (four feet of the basement) is press other matters (such as cat food or litter), place the machine on a steady and hard floor to restart it.

2.Safe mode reminder:If the sand falling port is stuck by foreign object due to special reasons, the equipment will sense this situation and carry out anti-pinch rotation, and enter the safe mode after rotation.

How to solve: check the machine and make sure there is no object--click the "start working" button on app--press the button on machine to restart machine.

3.Radar sensor fault:radar parts fault.

How to solve: if reminder many times please contact with our after-service team.

4.Motor fault:Motor connection or work fault.

How to solve:if reminder many times please contact with our after-service team.

猫砂添加 / 更换 Replace all cat litter



Cats like clean toilet, suggest to add new litter every week and change all litter every 30 days.

Video Instuction

- ☐ ☐ Scan the QR code
- ☐ ☐ Learn how to replace

硅胶垫更换 Replace the silicone mat



Video Instuction

- ☐ ☐ Scan the QR code
- ☐ ☐ Learn how to replace

球舱清洗 Clean the ballroom



Video Instuction

- ☐ ☐ Scan the QR code
- ☐ ☐ Learn how to dismantling

- ◆ Make sure there is no water remind on the ball track
- ◆ Make sure it is dry enough inside ball and then pour cat litter inside it.

产品参数 Product Parameters

产品名称(Name)	MEET SMART STERILIZING LITTER CABIN	产品型号(NO.)	MEET239
产品尺寸(Size)	56*61*70 (cm)	机身材料(Material)	PP树脂
额定电压(Voltage)	12V	产品重量(Weight)	约12.5kg
最大承重(Max weight)	25kg	额定功率(Power)	待机1W/ 运行状态6W
猫砂容量(Cat litter capacity)	4.5L	称重器误差范围 (Weight error range)	± 0.3kg

关于MEET | 智宠

About Us

MEET[®] is an operator of a pet smart ecosystem.

By exploring the harmonious coexistence relationship between humans and pets. We deepen the entire industry chain of pet product design, production and sales, and become an international product manufacturer with integrated pet entertainment, pet feeding and pet life. In the end, we will build a smart pet companion ecosystem for users to "enjoy life by Meet"



MEET Official WeChat



FCC statement

This device complies with Part 15 of the FCC Rules: Operation is subject to the following two conditions:

1. This device may not cause harmful interference and
2. This device must accept any interference that is received, including any interference that may cause undesired operation.

RF exposure warning :

This equipment complies with FCC radiation exposure limits set forth for an uncontrolled environment.

This equipment shall be installed and operated with minimum distance 20cm between the radiator & body.

This device is acting as slave and operating in the 2.4 GHz (2412 ~2462 MHz) band.

Ad Hoc function is supported but not able to operate on non-US frequencies.

Do not use the device with the environment which below minimum -30 °C or maximum over 50°C .

NOTE: This equipment has been tested and found to comply with the limits for a Class B digital device, pursuant to part 15 of the FCC Rules. These limits are designed to provide reasonable protection against harmful interference in a residential installation. This equipment generates uses and can radiate radio frequency energy and, if not installed and used in accordance with the instructions, may cause harmful interference to radio communications. However, there is no guarantee that interference will not occur in a particular installation. If this equipment does cause harmful interference to radio or television reception, which can be determined by turning the equipment off and on, the user is encouraged to try to correct the interference by one or more of the following measures:

- Reorient or relocate the receiving antenna.
- Increase the separation between the equipment and receiver.
- Connect the equipment into an outlet on a circuit different from that to which the receiver is connected.
- Consult the dealer or an experienced radio/TV technician for help.

Declaration Of Conformity Hereby, TAIZHOU HUANGYAN YIXUN FURNISHINGS CO.,LTD Declares that this MEET SMART STERILIZING LITTER CABIN is in compliance with the essential requirements and other relevant provisions of directive 2014/53/EU.

Changes or modifications not expressly approved by the party responsible for compliance could void the user's authority to operate the equipment.



