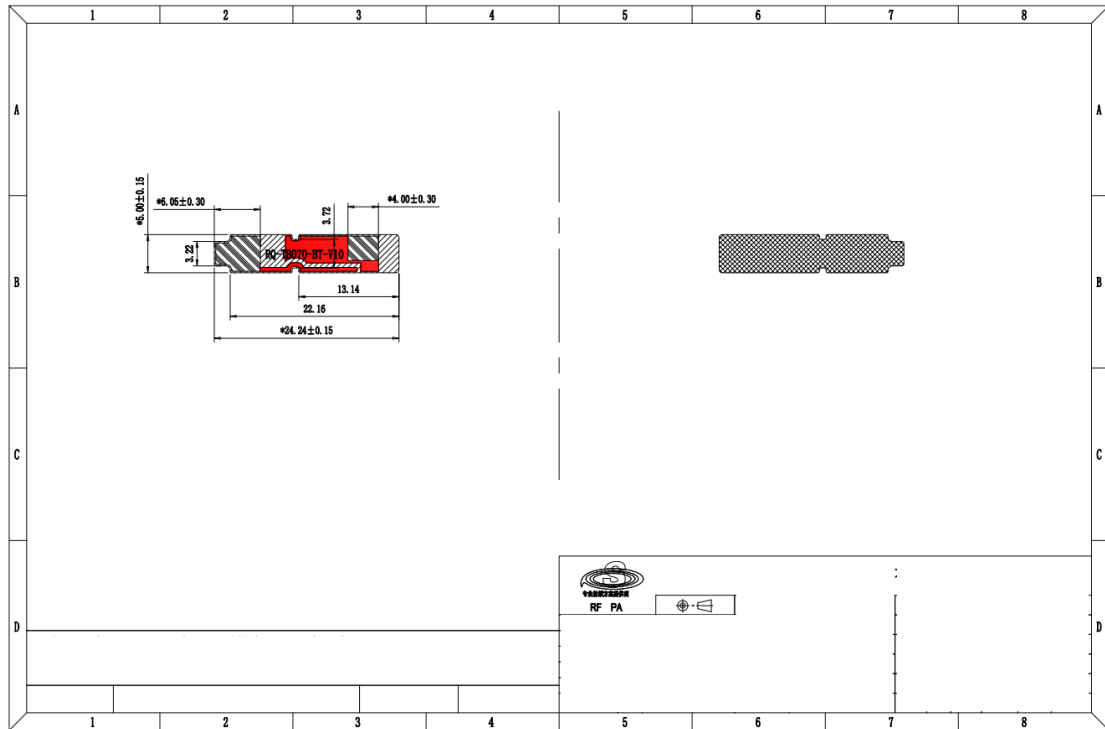


Antenna Specifications

Antenna Model: TB098
 Antenna Type: FPC Antenna



ELECTRICAL CHARACTERISTICS(L)

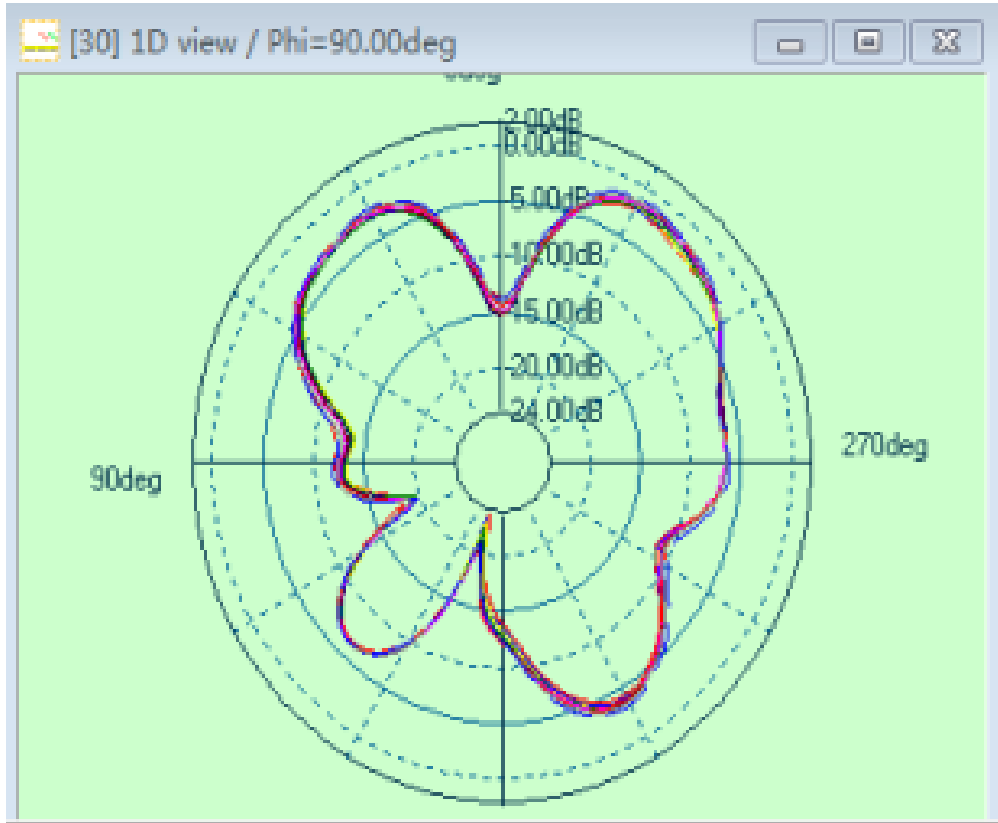
Frequency Range	2402 MHz ~ 2480MHz
Peak Gain	0.09
AVG Gain	-0.42
Impedance	50 Ω

ELECTRICAL CHARACTERISTICS(R)

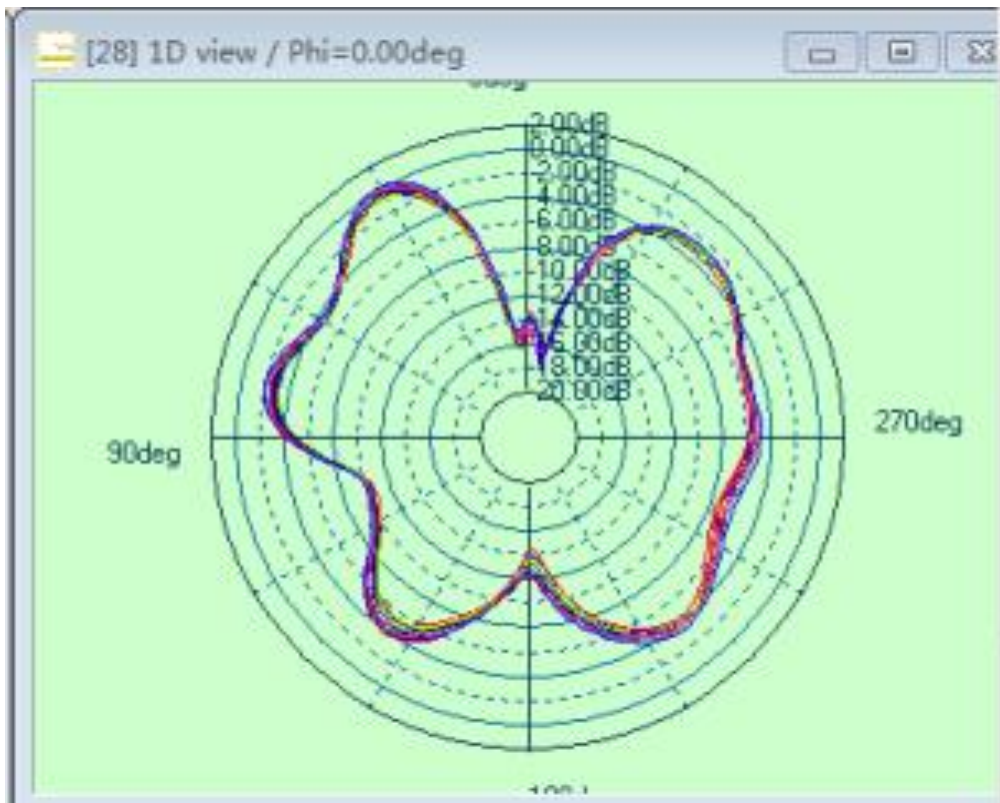
Frequency Range	2402 MHz ~ 2480MHz
Peak Gain	0.00
AVG Gain	-0.64
Impedance	50 Ω

R

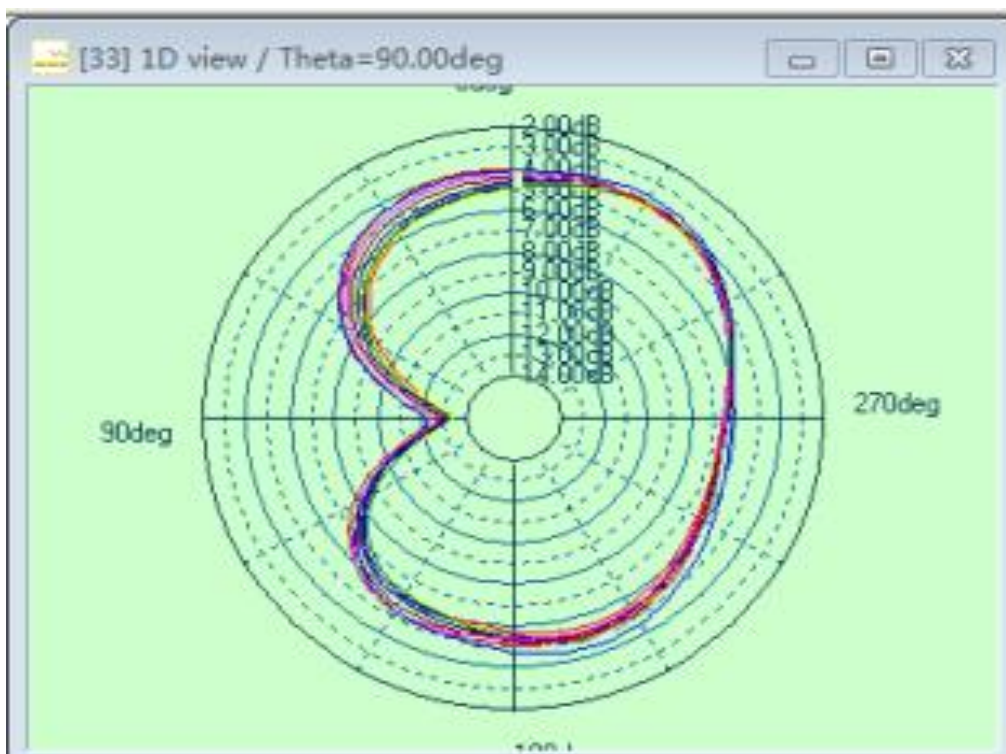
Radiation pattern: $\Phi=90^\circ$



Radiation pattern: $\Phi=0^\circ$

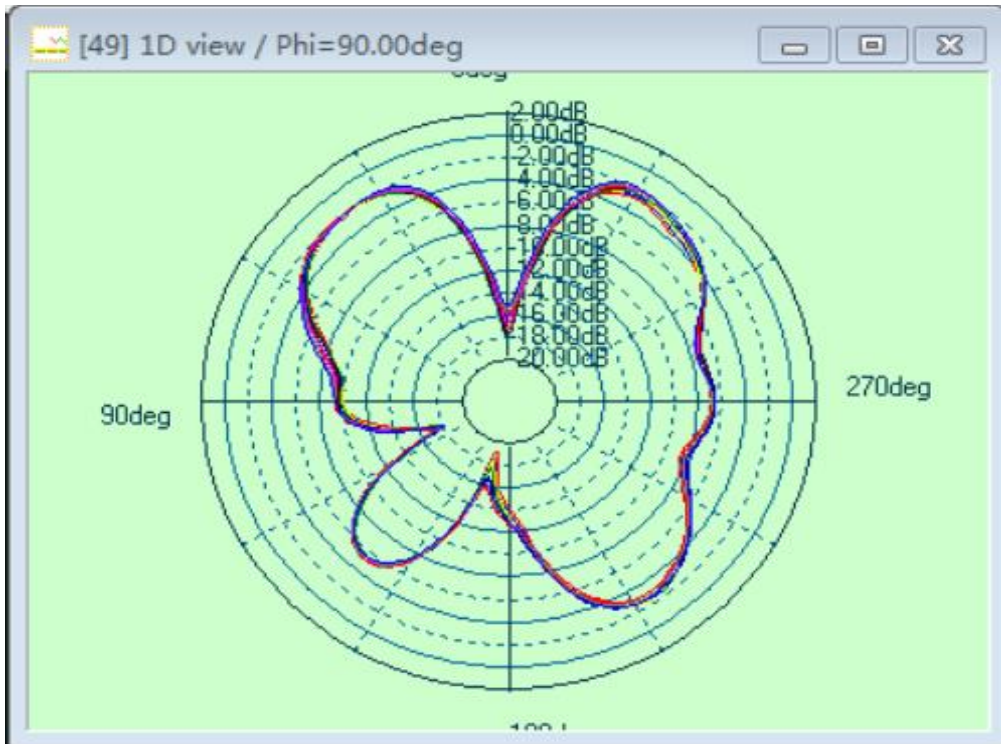


Radiation pattern: theta=90°

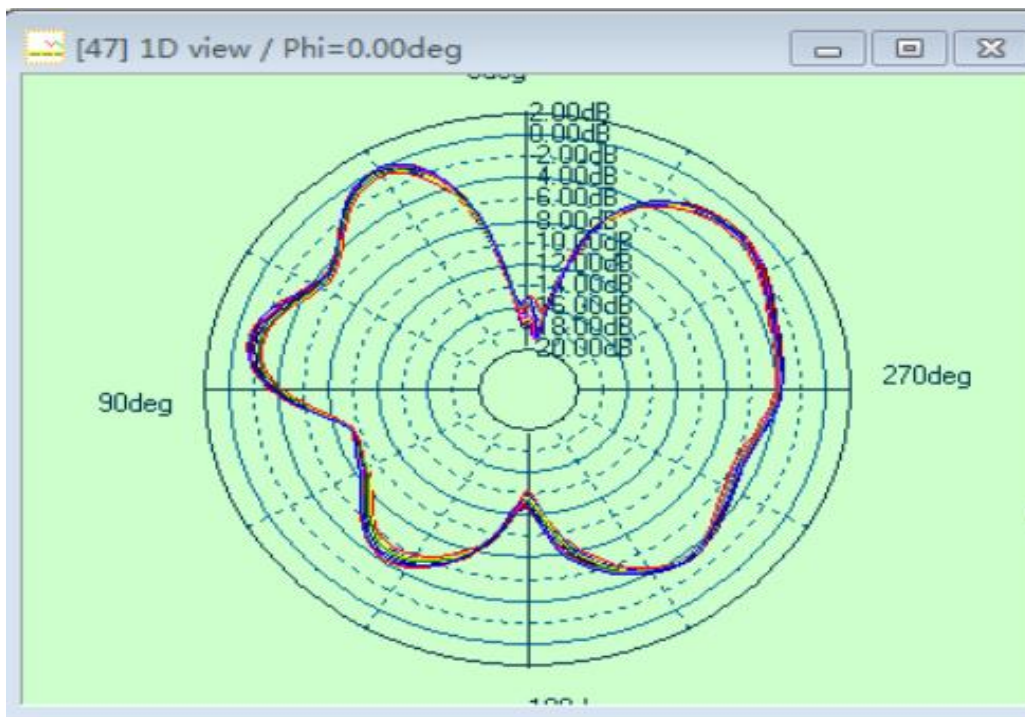


L

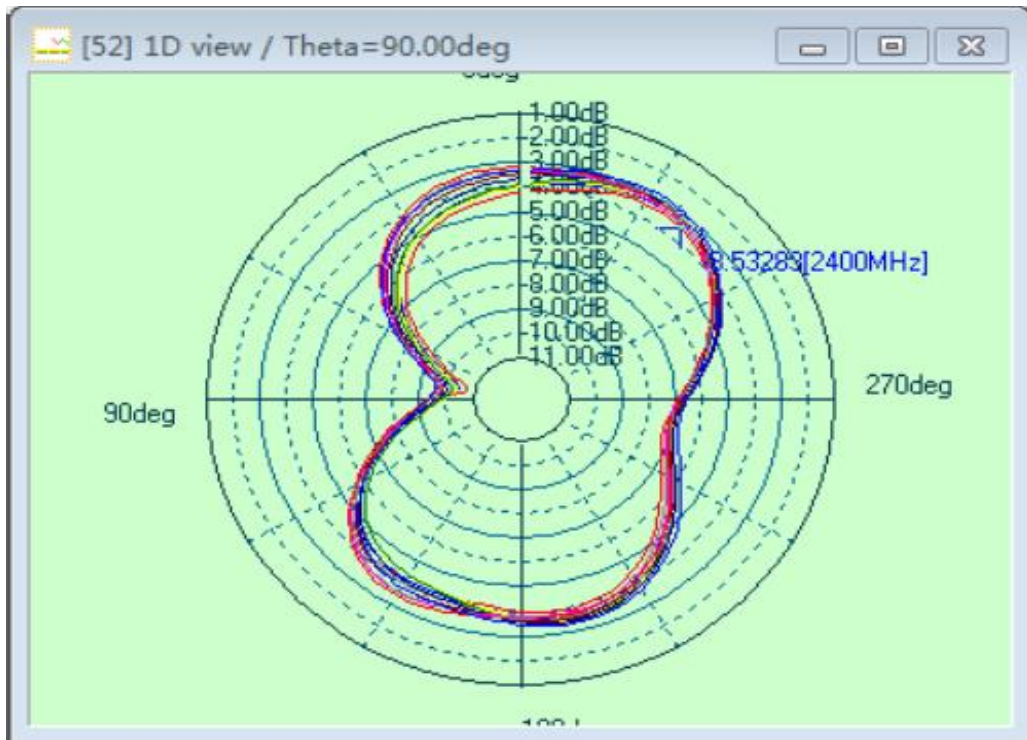
Radiation pattern: Phi=90°



Radiation pattern: $\Phi = 0^\circ$



Radiation pattern: $\theta = 90^\circ$



Left Ear			
Frequency (MHz)	Efficiency (%)	Efficiency (dB)	Gain (dB)
2400	31%	-5.11	-0.89
2410	32%	-4.89	-0.65
2420	33%	-4.87	-0.64
2430	33%	-4.83	-0.62
2440	33%	-4.76	-0.53
2450	35%	-4.62	-0.31
2460	35%	-4.60	-0.16
2470	34%	-4.65	-0.07
2480	35%	-4.57	0.09
Average Value	33%	-4.76	-0.42

Right Ear			
Frequency (MHz)	Efficiency (%)	Efficiency (dB)	Gain (dB)
2400	26%	-5.85	-1.02
2410	27%	-5.68	-0.85
2420	27%	-5.73	-0.91
2430	27%	-5.72	-0.92
2440	27%	-5.62	-0.80
2450	29%	-5.45	-0.56
2460	29%	-5.39	-0.41
2470	29%	-5.37	-0.27
2480	30%	-5.20	0.00
Average Value	28%	-5.55	-0.64