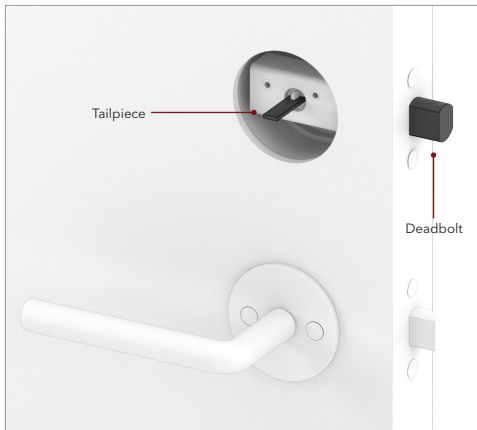


# FRIDAY

**Installation Guide DUO US Deadbolt & Mortise locks**

## Explanation of technical terms



Fits US DeadBolt, Mortise locks and EURO locks

# Components



DUO base unit



Adapters



Washers



Base rose



Sub rose



Release tool



USB charging cable



Manual

Inside the box you will find ...

## Mounting Instruction

Relevant Tools to be used in installing your new FRIDAY lock



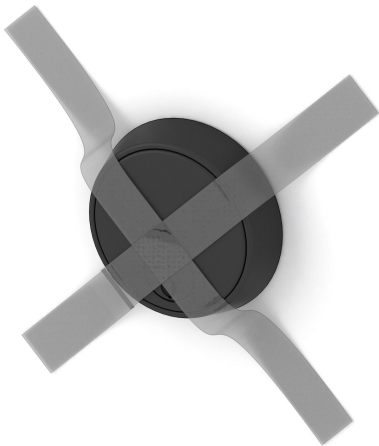
Pen, Nippers, Screwdriver, Metal saw (if needed), Tape

## Step 1 - Charge your DUO base unit



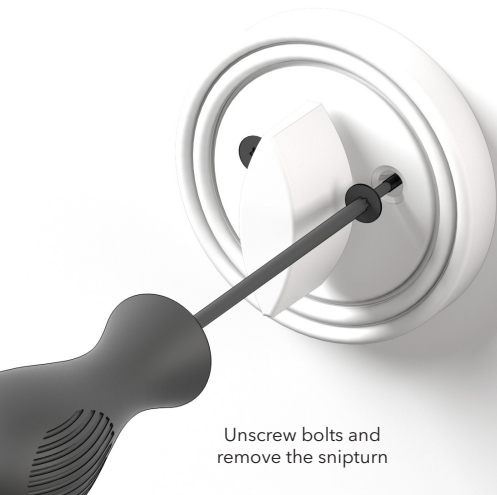
Recommended charging time 3 hours

## Step 2 - Apply tape



Apply tape above your cylinder to make sure that cylinder are hold in place.

### Step 3 - Uninstall old lock



Unscrew bolts and  
remove the snipturn

## Step 4 - Choose adapter



Choose your Tailpiece adapter to fit your deadbolt tailpiece



## Step 5 - "Click" the adapter



"Click" the adapter into the base rose

## Step 6 - Check the size of hole

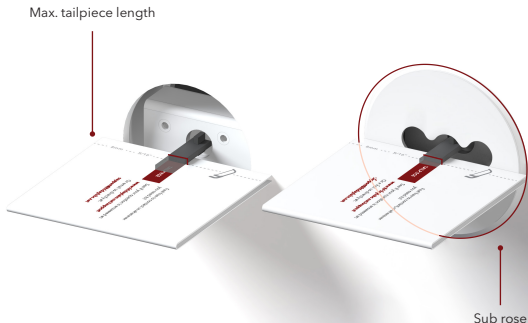


  
Sub rose

In case the hole is larger than the lock, you need to use the sub rose (enclosed in the package)

## Step 7 - Measure Tailpiece length

Normal



Measure the length of the existing tailpiece,  
and check if it exceeds the length limit

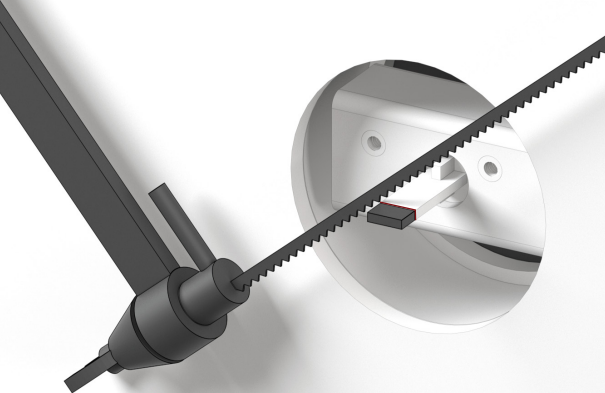
## Step 8 - Trim the cylinder tailpiece

Recommended lengths with and without subrose

With US Sub rose 6,5mm

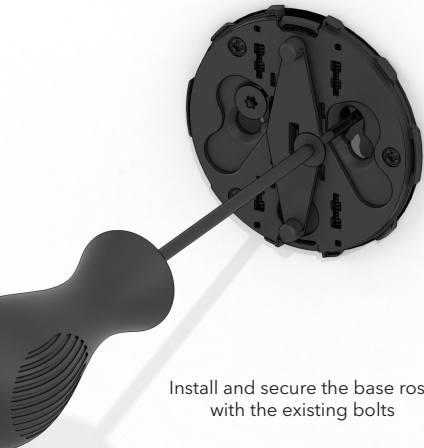
Without US Sub rose 5 mm

Correct lengths?



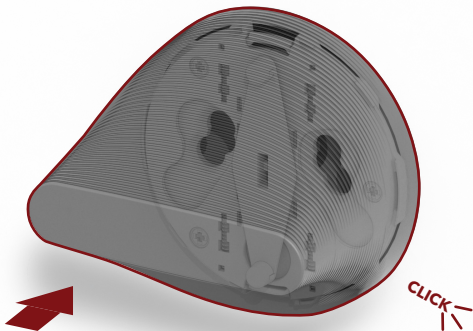
If the tailpiece exceeds the length limit, you will need to use a metal saw to trim off the extra part

## Step 9 - Install and secure



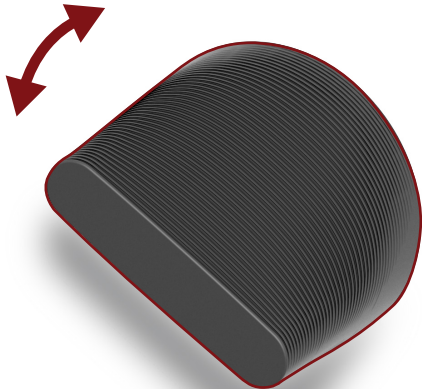
Install and secure the base rose  
with the existing bolts

## Step 10 - Attach the DUO lock



Click the DUO base unit into the baseplate

## Step 11 - Rotate



Rotate the lock to see if the mechanism runs smoothly,  
and choose the desired lock/unlock orientation

## App set up



Download the Friday app from the App Store or Google Play, and follow the onscreen instructions to set up your lock



## **Federal Communication Commission Interference Statement**

This equipment has been tested and found to comply with the limits for a Class B digital device, pursuant to Part 15 of the FCC rules. These limits are designed to provide reasonable protection against harmful interference in a residential installation. This equipment generates, uses and can radiate radio frequency energy and, if not installed and used in accordance with the instructions, may cause harmful interference to radio communications. However, there is no guarantee that interference will not occur in a particular installation. If this equipment does cause harmful interference to radio or television reception, which can be determined by turning the equipment off and on, the user is encouraged to try to correct the interference by one or more of the following measures:

- Reorient or relocate the receiving antenna.

- Increase the separation between the equipment and receiver.

- Connect the equipment into an outlet on a circuit different from that to which the receiver is connected.

- Consult the dealer or an experienced radio/TV technician for help.

### **FCC Caution**

This device complies with Part 15 of the FCC Rules. Operation is subject to the following two conditions:

- (1) this device may not cause harmful interference and
- (2) this device must accept any interference received, including interference that may cause undesired operation

### **RF Exposure Warning**

The equipment complies with RF exposure limits set forth for an uncontrolled environment. The antenna(s) used for this transmitter must not be co-located or operating in conjunction with any other antenna or transmitter.

You are cautioned that changes or modifications not expressly approved by the party responsible for compliance could void your authority to operate the equipment.

### **IC Statement**

This device contains licence-exempt transmitter(s)/receiver(s) that comply with Innovation, Science and Economic Development Canada's licence-exempt RSS(s). Operation is subject to the following two conditions:

1. This device may not cause interference.
2. This device must accept any interference, including interference that may cause undesired operation of the device.

**Industry Canada - Class B** This digital apparatus does not exceed the Class B limits for radio noise emissions from digital apparatus as set out in the interference-causing equipment standard entitled "Digital Apparatus," ICES-003 of Industry Canada. Operation is subject to the following two conditions: (1) this device may not cause interference, and (2) this device must accept any interference, including interference that may cause undesired operation of the device. To reduce potential radio interference to other users, the antenna type and its gain should be so chosen that the equivalent isotropically radiated power (e.i.r.p.) is not more than that permitted for successful communication.

**RF exposure warning:** The equipment complies with RF exposure limits set forth for an uncontrolled environment. The antenna(s) used for this transmitter must not be co-located or operating in conjunction with any other antenna or transmitter.

*L'émetteur/récepteur exempt de licence contenu dans le présent appareil est conforme aux CNR d'Innovation, Sciences et Développement économique Canada applicables aux appareils radio exempts de licence. L'exploitation est autorisée aux deux conditions suivantes :*

- 1. L'appareil ne doit pas produire de brouillage;*
- 2. L'appareil doit accepter tout brouillage radioélectrique subi, même si le brouillage est susceptible d'en compromettre le fonctionnement*

*Cet appareil numérique respecte les limites de bruits radioélectriques applicables aux appareils numériques de Classe B prescrites dans la norme sur le matériel interférant-brouilleur: "Appareils Numériques," NMB-003 édictée par industrie Canada. L'utilisation est soumise aux deux conditions suivantes: (1) cet appareil ne peut causer d'interférences, et (2) cet appareil doit accepter toutes interférences, y comprises celles susceptibles de provoquer un dysfonctionnement du dispositif. Afin de réduire les interférences radio potentielles pour les autres utilisateurs, le type d'antenne et son gain doivent être choisis de telle façon que l'équivalent de puissance isotrope émise (e.i.r.p) n'est pas plus grand que celui permis pour une communication établie.*

*Avertissement d'exposition RF: L'équipement est conforme aux limites d'exposition aux RF établies pour un environnement non supervisé. L'antenne (s) utilisée pour ce transmetteur ne doit pas être jumelée ou fonctionner en conjonction avec toute autre antenne ou transmetteur.*



## TAILPIECE

Feel free to contact us whenever you need to!

See if your question is answered at:

**[www.fridayslabs.net/support](http://www.fridayslabs.net/support)**

Or email us directly at:

**[support@fridayslabs.net](mailto:support@fridayslabs.net)**

Correct lengths?

3/16"  
1/4"

5mm  
6.5mm