

Ai Voice Mouse Manual

Intelligent voice mouse make typing so easy

Thanks for your support to products . Please read this manual carefully before using, and keep it for future reference.

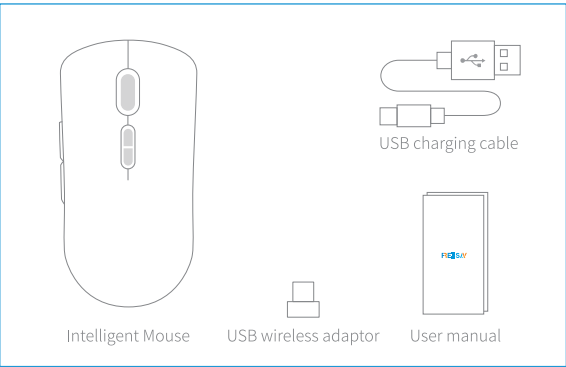
Products

Intelligent mouse is a computer-compatible, in addition to basic mouse functions, it can work as a multi-function smart mouse such as voice typing, speech translation typing, intelligent search and voice command.



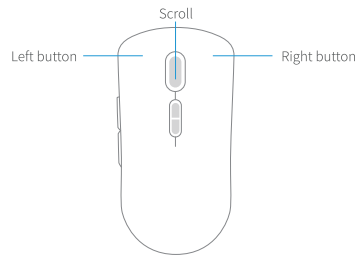
With intelligent voice mouse, you can work more efficiently and healthily, without cross-border communication, and let artificial intelligence help you create a better life.

Packing list

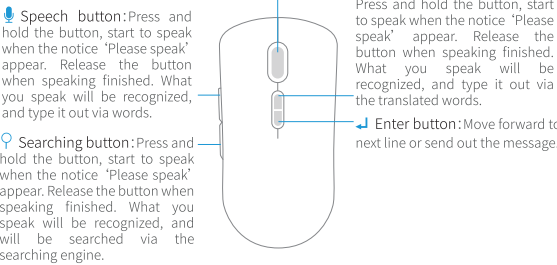


Buttons and functions description

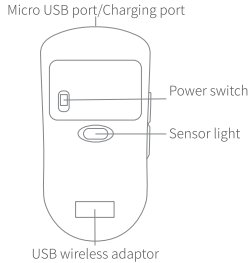
Working with the non-networked PC,laptop, you can use the basic functions of the mouse(for Windows):



When connected to the Internet and the Office Assistant software is correctly installed, each mouse button has the following functions:



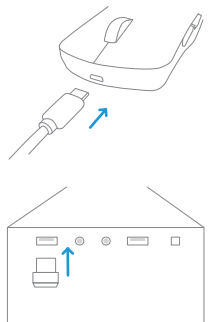
Instructions on the back of the mouse and the USB place:



Instructions

1.Battery charging:

Use the DC 5V to charge the mouse via Micro USB cable.



2.Connecting to the PC or laptop:

1.Take out the USB wireless adaptor.
2. Connect the USB wireless adaptor with the USB interface in PC or laptop.
3. Switch on the mouse, check whether the mouse can work or not, if yes, then the mouse has the basic function.

3.Quick Guide:

MAC OS:Search the ‘Office Assistant’ software or app in App store, install the software;You can also visit the page: ‘<https://freesay365.com/mouse/>’ to download the corresponding computer system version software.

Windows: Long press the scroll for 5 seconds or input the website ‘<https://freesay365.com/mouse/>’ in browser get into download page, choose the software version according to your PC.

4. Features:

(1) [🗨️]Voice typing : Press and hold the button, start to speak when the notice ‘Please speak’ appear. Release the button when speaking finished. What you speak will be recognized, and type it out via words. The recognized languages will be changed according to the software.

(2) [🗨️]Speech translation typing : Press and hold the button , start to speak when the notice ‘Please speak’ appear. Release the button when speaking finished. What you speak will be recognized, and type it out via the translated words. The recognized languages will be changed according to the software.

(3) [🔍]Voice searching : Adjust the searching engine in the iTing software, press the ‘search button’ in the mouse, speak to the microphone of the mouse when the notice ‘Please talk’ appear, release the button when speaking finished, what you speak will be recognized, and will be searched via the searching engine.

(4) [🗨️]Vocie command : Press the ‘search button’ in the mouse, speak the command to the microphone of the mouse when the notice ‘Please speak’ appear, release the button when speaking finished, what you speak will be recognized, if the command is in the list which you created, then the command will be executed.

(5) USB wireless adaptor storage area: After using, normally you can keep the USB wireless adaptor in the USB of PC. If you need to take it out from PC, please place the USB wireless adaptor into the USB wireless adaptor storage area of the mouse to avoid missing.

(6) DPI settings: Open [Software Settings] to enter the [General] page, click the [DPI Settings] drop-down box, and select the required DPI level.

Specifications

Functions: Voice typing, Speech translation typing, Voice searching, Voice command.
Wireless type: 2.4 GHz
DPI: 1200~2400
Speech recognition distance: 1 meter (Maximum) (the recognition effect will vary depending on the operational environment.)
Wireless recognition distance: 10meters (Maximum)
Normal working current: 6-20 mA
Number of keys: 7
Rechargeable battery: 3.7v / 400mAh
Charging time: about 1 hour
Charging Voltage and current: DC 5V≈500mA
Charging port: Micro USB
operational system supported: Windows 7/8/10, Mac OS 10.13 or above
Recognition languages: English, Spanish, French, Italian, German, Portuguese, Russian, Chinese, Japanese, Korean, Thai, Hindi. (The recognized languages will be changed according to the software.)
Translation languages: English, Spanish, French, Italian, German, Portuguese, Russian, Chinese, Japanese, Korean, Thailand other 28 international languages. (The recognized languages will be changed according to the software.)
Product packaging list: USB wireless adaptor x1, user manual x1, USB cable x1, warranty card x1

Support

For service please contact local seller to get information and support.

Safety Instructions

- (1) This product has a built-in rechargeable battery. Do not put it into water or fire.
- (2) If the product have abnormalities, such as over temperature, fuming, strange smell , etc., please stop using immediately and ensure that it is disconnected from the computer without burns.
- (3) Please do not disassemble, modify or repair, this product, otherwise the failure will not guarantee the warranty.



FCC Warning Statement
Changes or modifications not expressly approved by the party responsible for compliance could void the user’s authority to operate the equipment. This equipment has been tested and found to comply with the limits for a Class B digital device, pursuant to Part 15 of the FCC Rules. These limits are designed to provide reasonable protection against harmful interference in a residential installation. This equipment generates uses and can radiate radio frequency energy and, if not installed and used in accordance with the instructions, may cause harmful interference to radio communications. However, there is no guarantee that interference will not occur in a particular installation. If this equipment does cause harmful interference to radio or television reception, which can be determined by turning the equipment off and on, the user is encouraged to try to correct the interference by one or more of the following measures:
- Reorient or relocate the receiving antenna.
- Increase the separation between the equipment and receiver.
- Connect the equipment into an outlet on a circuit different from that to which the receiver is connected.
- Consult the dealer or an experienced radio/TV technician for help.