

Dream Glass Air

Quick Start Guide

Thank you for choosing Dream Glass. To ensure that you can experience Dream Glass quickly and correctly, please read this manual carefully before use.

The product pictures in this manual are all sketch graphics. Please be advised that the actual product might differ from the sketches.

DreamWorld reserves the final interpretation right of this manual, warranty certificate and other related materials.

Contents

1 Inside the Box

2 Headset Components

3 Controller

4 Setting Up

- How to Assemble and Wear
- Adjusting Pupil Distance

5 Instructions

- WiFi Setup
- 3D Settings
- Browsing Local Contents
- Wireless Screencasting
- Connecting to External Devices

6 Charging Indication

7 Specifications

8 Precautions / Warnings

9 Warranty Information

1 Inside the Box



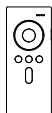
Optical Lens



Black Out Shade



Front Cushion



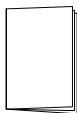
Controller



Lens Bag



Cleaning Cloth



Quick Start Guide



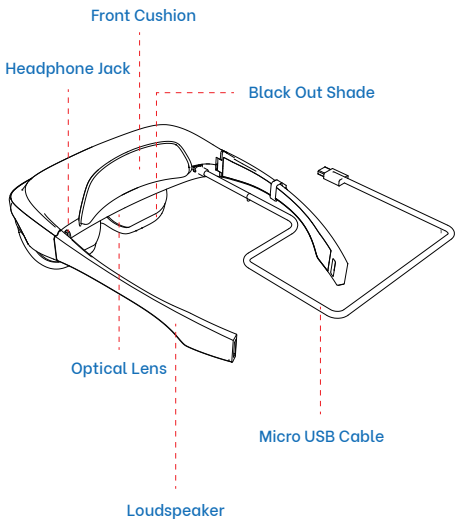
Micro USB Cable



Head Strap

Remark: Using guide video saved in headset.

2 Headset Components



3 Controller

HDMI



USB

OK

·Short Press:confirm
and enter

Direction Key

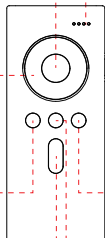
·Short Press:up/down
/left/right
·Long Press 3 Seconds:
turn on/off the cursor
function

Back

·Return to the previous
screen

Volume

Battery Indicator Light



Power Button

·Long Press 3 Seconds:
power on/off
Short Press:sleep
/wake up

3D

·Select 3D format

Home

·Return to the home page

Micro USB

·Charge

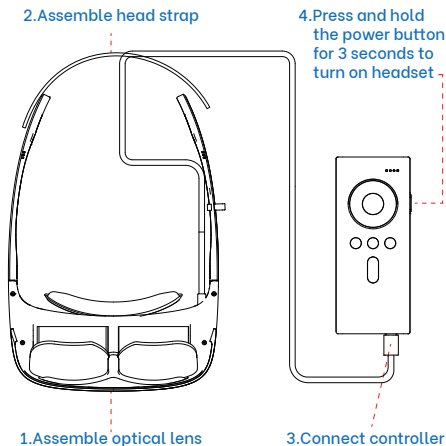


Headset Port

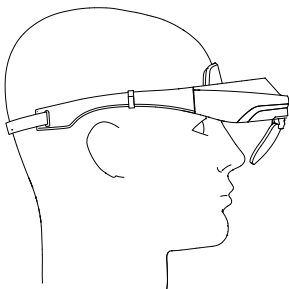
4 Setting Up

· How to Assemble and Wear

Please assemble and wear the headset by following the instructions below.

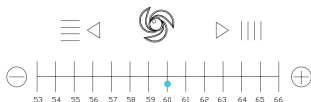
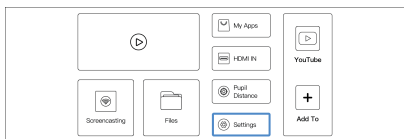


Please wear the headset according to the following picture and adjust the head strap to fit your head comfortably.



· Adjusting Pupil Distance (PD)

Please adjust your Pupil Distance properly for the best visual effect when using the headset for the first time. You can adjust with your controller through the following steps: Press “Home”, go to “Pupil Distance”→ Press “Left”: decrease PD/ Press “Right””: increase PD



5 Instructions

· WiFi Setup

Follow the according steps to connect to your desired WiFi:

Press “Home”, go to “Settings”→“WiFi”, then enter the password.



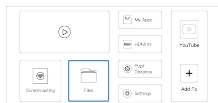
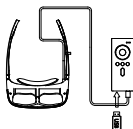
· 3D Settings

Press the “3D” button to select a suitable 3D format according to the video.



· Browsing Local Contents

If you are ready to expand your visual imagination with Dream Glass on your favorite local media contents, you can either open “My Apps” or plug your USB drive then go to “Home”→“Files”.



· Wireless Screencasting

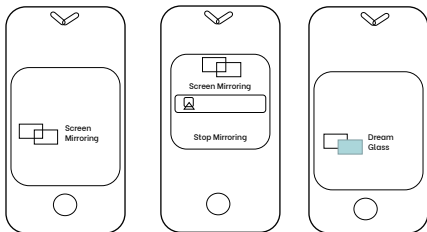
Important notice: The headset and smartphone should be connected to the same WiFi when using the Wireless Screencasting function.

Screen Mirroring:

(1)Headset: Press “Home”, go to “Screencasting” as shown in the picture to turn the function on.

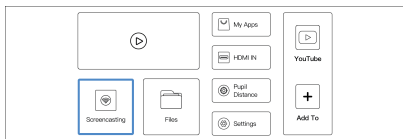


(2)Smartphone: Turn on the Screen Mirroring function of your smartphone (iPhone for example), find and pair with Dream Glass.



Mobile APP Screencasting:

(1)Headset: Press “Home”, go to “Screencasting” as shown in the picture to turn the function on.



(2)Smartphone: Open the app and click the screencasting button as shown below(YouTube for example), find and pair with Dream Glass.



· Connecting to External Devices

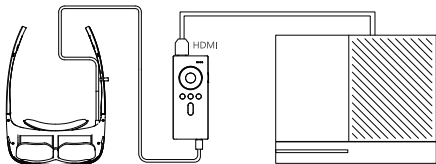
(1) Connecting with PC, laptops, tablets:

Please connect your PC, laptops, tablets via an HDMI cable as shown in the picture. Then go to “Home” – “HDMI IN” and follow the instructions on the screen.



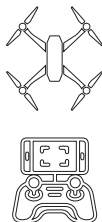
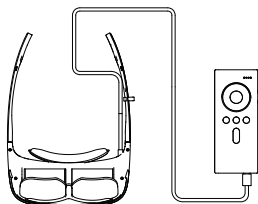
(2) Connecting with game consoles

If you are a fan of the Nintendo Switch, PS4, Xbox, etc., Dream Glass will be your best gaming companion ever. Please connect with an HDMI cable, go to “Home” – “HDMI IN” to connect.



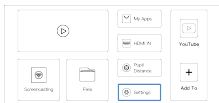
(3)Connecting with drones

Please connect to your drone as shown in the following picture. After inserting your smartphone into the drone's operating handle, please use the screen mirroring function as mentioned above.



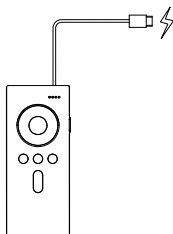
4)Connecting with Bluetooth earphones/speakers

Please make sure the Bluetooth function is turned on for your earphones or speakers. Go to “Home”- “Settings”- “Bluetooth” to match your devices before using.



6 Charging Indication

As shown in the picture, insert the Micro USB cable to charge your controller.



Charging Indicator

- 1.The number of indicator lights show your residual battery power when you turn on the controller.
- 2.The charging indicator lights flash when the controller is connected to the power supply. The indicator lights will always be on after being fully charged.

Power Indicator

State of power indicator	Residual battery
3 lights on, 1 light flash	75%-100%
2 lights on, 1 light flash	50%-75%
1 light on, 1 light flash	25%-50%
1 light flash only	< 25%, need to recharge
1 light flashing fast	Low power, need to recharge

7 Specifications

Display	FOV	90 °
	Lens	Fits over eyeglasses, See-through freeform surface lens, off-axis reflection
	Resolution	4K (3840*2160),1920*1080 per eye
	Pixel Per Inch	868
	Aspect ratio	16:9
	FPS	60Hz
	3D format	Side by side, Over /Under
Audio	Audio output	Built-in speaker,3.5mm Jack/Bluetooth connection
Sensor	Tracking	3DOF head tracking
Compute and connectivity	CPU	1.8GHz
	GPU	Mali-T864
	Storage	16GB
	Memory	2GB
	USB	2.0
	HDMI	1.4

Compute and connectivity	Headset port	Only for Dream Glass use
	WiFi	2.4G/5G dual-band, Hotspot
	Bluetooth	5.0
	Compatible device	Smartphone, Tablet, PC, Laptop, Switch, PS4, Xbox, Drone
	USB drive format	FAT32
Software	System	Android 7.1.2
Power	Battery	8000 mAh Lithium batteries
	Working duration	About 5hours
	Charging	5V at 2A Max.
Fit	Size	269*170*43mm, adjustable head strap for different head size
	Weight	About 200g
Operating environment	0°C--60°C, 90% RH Max.	

8 Precautions / Warnings

· Precautions

- Please handle Dream Glass with care and store it properly to prevent damage (from falling etc.)
- Do not yank, tie, tighten or bend the wires.
- In order to ensure a long battery life, please use a standard power adapter. Please charge or use the controller at least once every four months.
- To ensure the best visual effect, please take good care of the lens. Do not press, bend or scratch.
- Please use the Dream Glass cleaning cloth or a similar soft cloth to wipe your lens gently if it becomes dirty. To prevent scratching the lens, be sure to dust off the cleaning cloth before wiping.
- To avoid damaging the device, please don't use any organic solvent to wipe the lens or the headset surface.
- The magnetic parts inside of Dream Glass may attract tiny metal objects. Please avoid approaching magnetically sensitive items, such as credit cards and magnetic storage devices.
- Radio frequency signals and the magnetic fields of Dream Glass may affect pacemakers or other medical equipment. Please consult your doctor before use.
- If you feel any serious discomfort while using the headset, such as fatigue, dizziness, nausea, headache, etc.,

please stop using Dream Glass immediately and rest until the discomfort disappears.

- Dream Glass is made of premium material. However, sensitive skin users may experience uncomfortable symptoms such as tingling, burning, itching etc. If so, please stop using it immediately.
- Using Dream Glass for a long period of time may affect the eyesight of teenagers. Children under 12 years old should use it under parental supervision.
- Please keep Dream Glass away from children under 3 years old.

· Warnings

- Keep away from fire when charging. Do not use non-specified adaptors and cables,
- Do not heat, drop, bend, disassemble, puncture, cut, flatten or burn the battery.
- Do not expose the battery to blazing sunlight, water vapor or extreme temperature environment.
- Do not disassemble Dream Glass without permission. Any self-disassembly or modification will invalidate your warranty rights.
- Do not dispose of Dream Glass together with common household garbage. Please recycle or scrap the lithium battery inside Dream Glass properly.

9 Warranty Information

· Return Policy

We accept returns of items that were purchased directly from DreamWorld provided that they are unused, in the original packaging (i.e. Dream Glass devices must be inside the original, unopened box and the seal on the box must not be tampered with or broken in any manner).

Accessories must have all tags (if applicable and be enclosed in the original packaging) and returned within **14 days** from the date of delivery or pickup. If your purchased product has any manufacturing defects or other QC issues, you can get your Dream Glass exchanged/repaired for free within **14 days** from the purchase date.

Please contact our Customer Service team via service@dreamworldvision.com.cn to get your return or exchange started. Then, prepare and drop off your shipment as required. The refund will be issued via the payment method you used to make your purchase. The time required to process your refund will be within **7-15 business days** from the date DreamWorld confirms receipt of the refunded item.

· Warranty Policy

DreamWorld offers a 12-month warranty on all the Dream Glasses we have sold. You can get your Dream Glass repaired within 12 months from purchase date after paying the maintenance fee.

Please contact service@dreamworldvision.com.cn if you need repair services. This warranty is valid only if you purchased a product through our official channels, and if the product was originally sold to you in its original, sealed packing. Do not use until you have read the terms of this warranty.

The limited warranty does not cover:

- 1) Defects or damage resulting from improper usage not included in this manual;
- 2) Attached parts except for headset and controller, such as the packing box or gifts;
- 3) Defects or damage resulting from non-authorized modification, changing or repairing;
- 4) Defects or damage resulting from external causes such as collision with an object, fire, flooding, dirt, windstorm;
- 5) The product after the warranty has ended. However, repairs can be done at a cost. Please contact us should there be any issues.

Contact Us

www.dreamworldvision.com



@DreamGlass.Official



@DreamGlassAR



@dreamglassar



Warning:

This device complies with Part 15 of the FCC Rules. Operation is subject to the following two conditions: (1) this device may not cause harmful interference, and (2) this device must accept any interference received, including interference that may cause undesired operation.

changes or modifications not expressly approved by the party responsible for compliance could void the user's authority to operate the equipment.

NOTE: This equipment has been tested and found to comply with the limits for a Class B digital device, pursuant to Part 15 of the FCC Rules. These limits are designed to provide reasonable protection against harmful interference in a residential installation. This equipment generates, uses and can radiate radio frequency energy and, if not installed and used in accordance with the instructions, may cause harmful interference to radio communications. However, there is no guarantee that interference will not occur in a particular installation. If this equipment does cause harmful interference to radio or television reception, which can be determined by turning the equipment off and on, the user is encouraged to try to correct the interference by one or more of the following measures:

- Reorient or relocate the receiving antenna.
- Increase the separation between the equipment and receiver.
- Connect the equipment into an outlet on a circuit different from that to which the receiver is connected.
- Consult the dealer or an experienced radio/TV technician for help.

Specific Absorption Rate (SAR) information:

This smart phone meets the government's requirements for exposure to radio waves. The guidelines are based on standards that were developed by independent scientific organizations through periodic and thorough evaluation of scientific studies. The standards include a substantial

safety margin designed to assure the safety of all persons regardless of age or health.

This equipment should be installed and operated with minimum distance of 0 cm the radiator your body.