

SPECIFICATION

SKI.W032.8X_Antenna

Manufacturer	Guangzhou Shikun Electronic Technology Co., LTD
Name	SKI.W032.8X_Antenna
Specifications	2.4G WIFI&BLE Antenna
Model	PCB Antenna
Company address	NO.6 Liankun Road, Huangpu District, Guangzhou, China
Telephone	020-86154388

Approved by Shikun		
Checked by	Rechecked by	Approved by
Chen Qiaofeng	Lv Guitian	

REVISION HISTORY

VERSION	DATE	BOARD ID	PAGE	DESCRIPTION	AUTHOR
V0	2025.06.05	SKI.W032.8X_Antenna	All	First Issued.	Chen Qiaofeng

1. Index

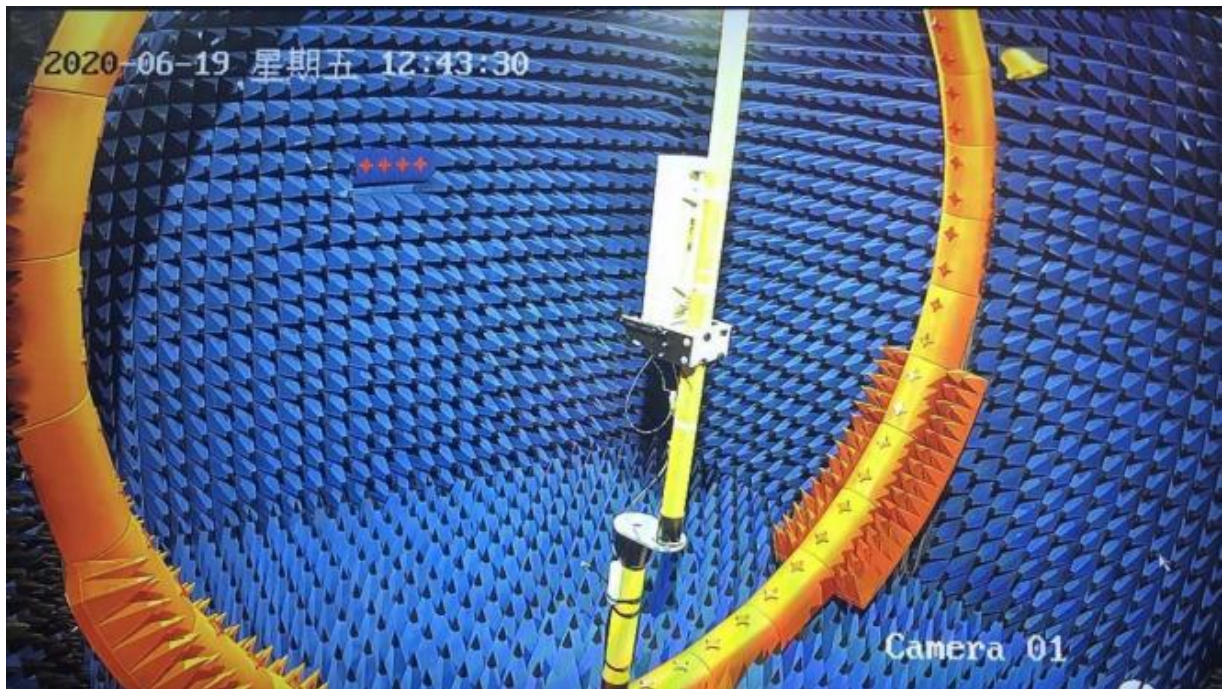
Serial number	Content	Page number
-	Specification	1
-	Record of version changes	1
1	List of items	2
2	Test equipment and conditions	3
3	Structure specification of the prototype	4
4	Gain/Effi/3D	6

2. Test Equipment & Conditions

2.1. Network Analyzers : KEYSIGHT P5002A

2.2. Communications Test Set: R&S CMW 500

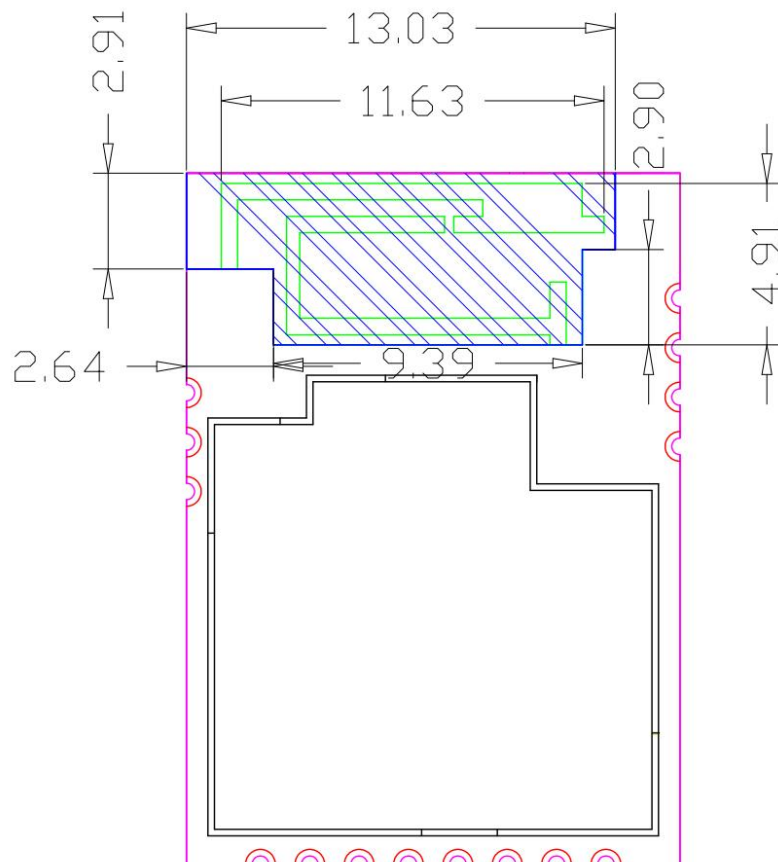
2.3. 3D Chamber Test System: Feitu Test System



3. Mechanical instruction



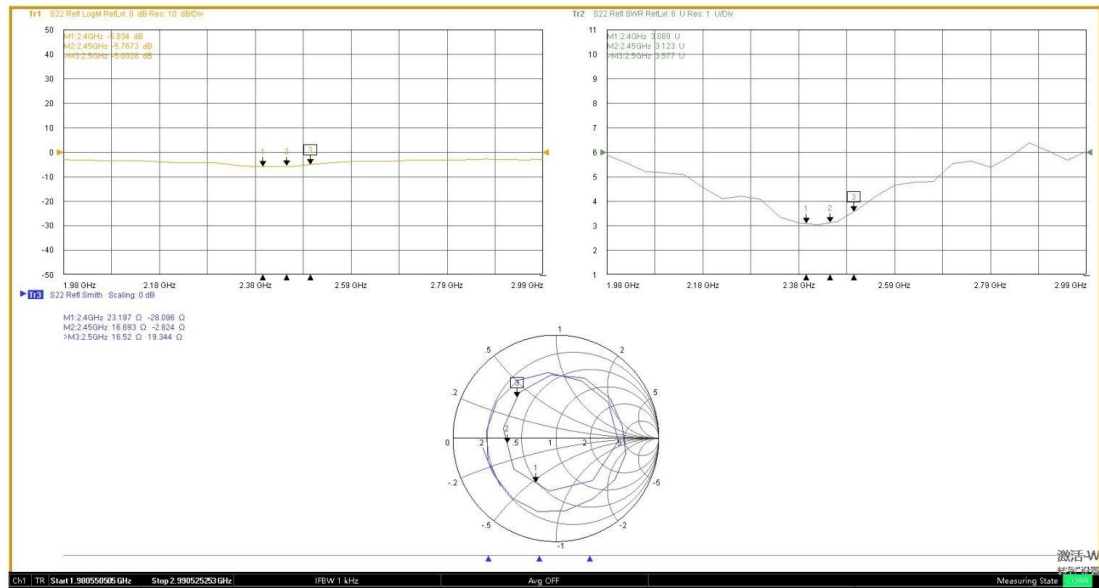
Picture of the antenna



Antenna size diagram

QR-ZZPJ-017A

3.1.S11-WIFI&BLE:



4. Gain/Effi/3D-Model(WIFI&BLE):

Freq	(MHz)	2400	2410	2420	2430	2440	2450	2460	2470	2480	2490	2500
Effi	(%)	31.45	33.87	30.52	33.77	34.74	31.53	34	32.78	36.4	37.09	36.22
Gain	(dBi)	-0.13	0.23	-0.29	0.18	0.14	-0.32	-0.27	-0.48	-0.16	0.11	0.22

