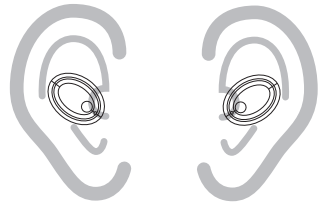


Comfortable wearing

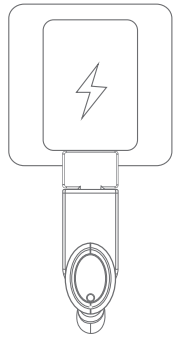


Right ear picture R

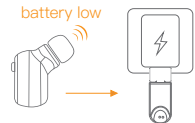
Left ear picture L

The F10 earbud is designed for both ears. It will be very comfortable for you whether you wear it in your left or right ear.

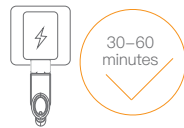
Charging



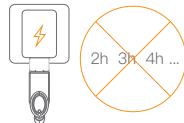
- To ensure safety, please note two points below:
1. Please stop charging the headset when it has already been fully charged.
 2. Please keep the headset off when it's being charged.



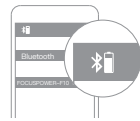
- When the voice prompts "battery low", the headset needs to be charged. When it's being charged, the blue light will come on. When it's fully charged, the blue light will go out.



- Generally speaking, it will take 30-60 minutes to fully charge the headset. However, the charging time will make a difference if you use different USB-adapters.



- To preserve the battery capacity and life, please don't keep charging the headset too long.



- The current battery level will be displayed on the device, you can check it anytime and anywhere. (Some Android phones don't support this function)

Important Safety and Operational Information

Thank you so much for choosing FOCUS-POWER product. Please read the following safety and operational instructions before using your headset/headphones and accessories. Please keep these instructions for your reference. This symbol identifies and alerts the user to the presence of important

General

- ▶ Operating, storage and charging temperature is 0°C to 40°C (32°F to 104°F) .

⚠ Warnings

- ▶ Exposure to high volume sound levels or excessive sound pressure for a long time may cause temporary or permanent damage to your hearing. You should always use your headset/headphones with the volume set at moderate levels.

- Observe all signs and instructions that require an electrical device or RF radio produce to be switched off in designated areas, such as gas/refueling stations, hospitals, blasting areas, potentially explosive atmospheres, or aircraft.

- This product is not a toy. Never allow children to play with the product – small parts may be a choking hazard.

- Install and use eartips and earbuds in accordance with the instructions provided. Do not force eartips or earbuds down the ear canal. If either becomes lodged in the ear canal, seek medical attention immediately.

- If the product or charger: overheats; has a damage cord or plug; has been dropped or damaged; has been dropped into water, disconnected any charger from its power supply, discontinue use of the product.

- To avoid the risk of electric shock, explosion, fire or leakage of corrosive or toxic chemicals, observe the following charging and battery warnings. Charge the headset/headphones according to the instructions supplied with the unit.

NOTE: This equipment has been tested and found to comply with the limits for a Class B digital device, pursuant to part 15 of the FCC Rules. These limits are designed to provide reasonable protection against harmful interference in a residential installation. This equipment generates uses and can radiate radio frequency energy and, if not installed and used in accordance with the instructions, may cause harmful interference to radio communications. However, there is no guarantee that interference will not occur in a particular installation. If this equipment does cause harmful interference to radio or television reception, which can be determined by turning the equipment off and on, the user is encouraged to try to correct the interference by one or more of the following measures:

- Reorient or relocate the receiving antenna.
- Increase the separation between the equipment and receiver.
- Connect the equipment into an outlet on a circuit different from that to which the receiver is connected.
- Consult the dealer or an experienced radio/TV technician for help.

Changes or modifications not expressly approved by the party responsible for compliance could void the user's authority to operate the equipment.

FOCUSPOWER

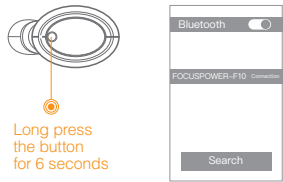
F10

Bluetooth Headset

USER MANUAL

FCC ID:2AWWT-F10

Pair and connect



1. Long press the Multi-function button for "6" seconds until voice prompts "ready to pair". Now the blue indicator light is shining. (**Attention: Don't loosen your finger when you hear "power on"**)

2. Activate the Bluetooth on mobile phones or computers, then search and add new Bluetooth device in the menu.

- IOS terminal Settings > Bluetooth > Turn on
- Android terminal Settings> Turn on Bluetooth >Search
- Different devices may lead to different operation interfaces.

3. Select "FOCUSPOWER-F10" from Bluetooth device list. Please type in"0000" if password is required. The blue light will go out and voice will prompt"Connected" if connection is completed.



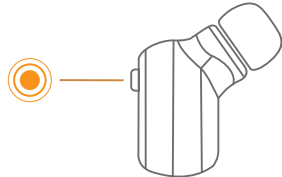
4. The second time you connect the headset with the device which has already been connected to the F10 previously , you needn't repeat the above steps, the headset will automatically enter the pairing mode when you turn it on.



5. The headset supports multipoint connection(one for two). You can pair it with second mobile phones at the same time and answer calls from either one.

- Turn off the headset after it's successfully paired with the first mobile phone.
- Long press the multifunction button for 5 seconds to pair with the second device.
- Then select "FOCUSPOWER-F10" in the Bluetooth menu of the second device. At last the two devices have been connected with the headset.

Basic Operation



Turn on/off the headset

Turn on: Long press the multifunction button for 3 seconds with voice promoting "power on" and the blue light flashing for one time.

Turn off: Long press the multifunction button for 5 seconds with voice promoting "power off" and the blue light flashing for 4 times.

Play and pause music

Press the multifunction button.

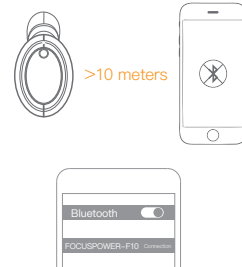
Answer and end calls.

Press the multifunction button.

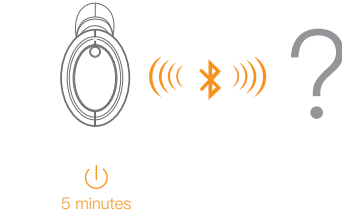
Reject the incoming call

Long press the multifunction for two seconds.

Usual Connection



- ▶ If the range between the Bluetooth and device is more than 10 meters, the sound quality will be terrible and headset will be constantly cut in and off. In this condition the headset should be repaired with your device. If they can't be repaired, please select the Bluetooth name of the headset in settings to repair.



- ▶ To reduce the battery consumption, if there has been no connected devices in the effective range of headset within 5 minutes, the headset will be automatically shut down.