



ISKRATEL

Ethernet Home Gateway

Innbox E80

Quick Start Guide



Table of Contents

1	Safety Precautions	4
2	Description of the Innbox E80.....	5
2.1	Front View	5
2.2	Back View	6
2.3	Side View	7
2.4	Top View	7
3	Connecting to the Internet and Powering on.....	8
4	Connecting Your Devices.....	9
4.1	Connecting a Computer	9
4.2	Connecting a Set-Top Box	10
5	Setting up Internet Access on the Computer	11
6	Web Management	12
6.1	Accessing the Web Management	12
6.2	Getting around the Web Management	13
7	FCC Statement.....	14
8	IC Statement.....	15



1 Safety Precautions

Congratulations on your purchase of the Innbox E80 home gateway!

To ensure the optimum performance of the device without damaging the equipment or endangering yourself and other users, please make sure to follow all safety precautions.



Please read the installation instructions in the User Manual thoroughly before you set up the device.



The device is designed for indoor use. The unit should be used in a sheltered area, within a temperature range from +5 °C to +40 °C.



Do not expose the device to direct sunlight or other heat sources. The housing and electronic components may be damaged by direct sunlight or heat sources.



Avoid using the device in dusty or damp places and places where there is a risk of explosion.



Do not expose the device to humidity (e.g. in a bathroom). Risk of electric shock!



Performance may be degraded if the device is located close to sources of electromagnetic interference (such as a microwave oven or audio/video equipment).



Do not try to open or repair the device yourself. This is an electronic device that may only be repaired by authorised and qualified personnel.



Only use the power adapter that comes with the package. Using a different power adapter may damage this device. Risk of electric shock!



Place the device on a stable surface or mount it on the wall.



Disconnect the power adapter before moving the device. Risk of electric shock!



Do not put the cables where people can stumble or fall over them.

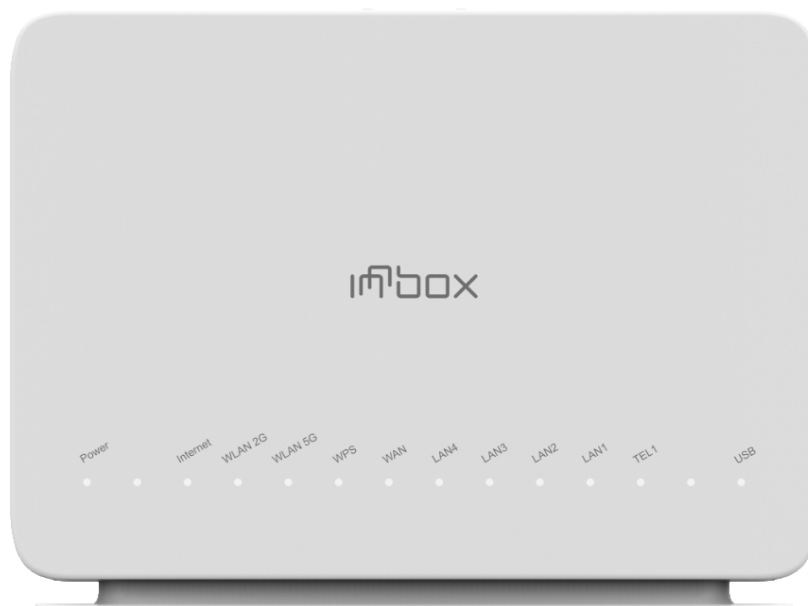


Keep the package out of reach of children.

2 Description of the Innbox E80

2.1 Front View

The front panel of the Innbox E80 home gateway is equipped with several light indicators that provide you with the status of the device.



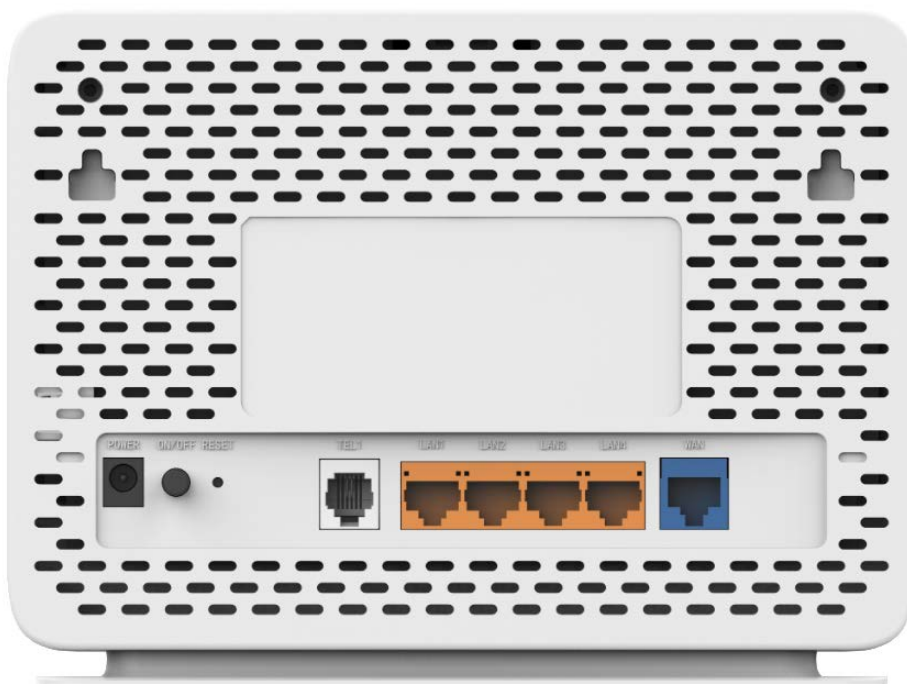
Front panel light indicators

Indicator	Colour	Significance
Power	Green	On - The device is powered on and operates normally. Off - The device is powered off.
Internet	Green	On - The PPP connection is established. blinking - The PPP connection is established, broadband traffic activity is in progress. Off - The PPP connection is disabled.
WLAN 2G	Green	On - Wireless connection on the home gateway is enabled. blinking - Wireless connection is in use. Off - Wireless connection on the home gateway is disabled.
WLAN 5G	Green	On - Wireless connection on the home gateway is enabled. blinking - Wireless connection is in use. Off - Wireless connection on the home gateway is disabled.
WPS	Green	On - Successful WPS (Wi-Fi Protected Setup) connection. blinking - WPS negotiation is in progress. Off - WPS is disabled.
WAN	Green	On - The WAN connection is established. blinking - Data transfer activity is in progress. Off - The WAN connection is disabled.
LAN1...LAN4	Green	On - Devices are connected to the home gateway and turned on. blinking - Data transfer activity is in progress. Off - No devices are connected to the home gateway, or the devices are turned off.

TEL1	Green	On - Phone service is enabled and ready to be used. Off - Phone service is disabled.
USB	Green	On - The USB device is connected and recognized. Off - No USB device connected.

2.2 Back View

The back of the Innbox E80 home gateway is equipped with connectors and switches that allow you to connect your device.



Back panel connectors

Item	Purpose
Power	Power plug for connecting to the supplied 12VDC power adapter.
On/Off	Button for turning the home gateway on or off. The home gateway is turned on when the button is pressed in.
Reset	This button is used to reset the configuration of the home gateway to factory default values. When you press this button, the light indicators will briefly go off and then on again and the home gateway will reset. The factory default settings will only be valid for the time the device is running. If you want to preserve factory default settings, save the configuration.
TEL1	Port for connecting analog phones.
LAN1...LAN4	Four Ethernet ports to connect data devices (such as a computer) or video devices (such as a set-top box).
WAN	Ethernet port for connecting the Ethernet WAN service.

2.3 Side View

The side of the Innbox E80 home gateway is equipped with an USB connector that allows you to connect various USB devices.



Side panel connector

Item	Purpose
USB	USB 2.0 Type-A connector for connecting external devices.

2.4 Top View

The following figure shows the top panel of your Innbox E80 home gateway.



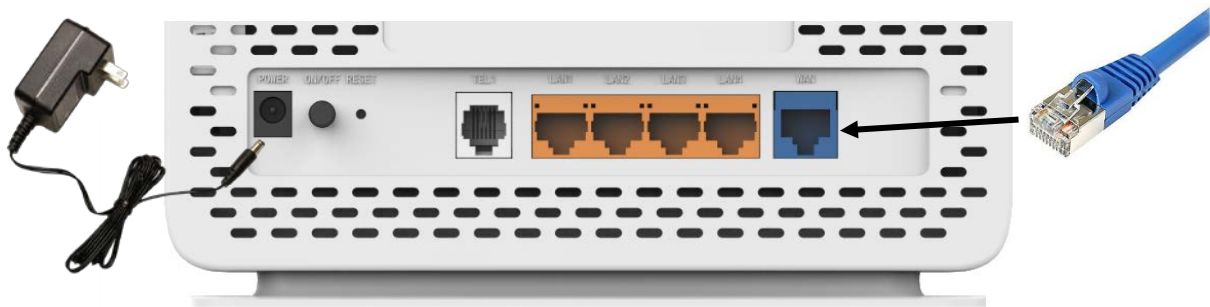
Top panel buttons

Item	Purpose
WPS	Button for enabling or disabling the WPS function.
WLAN	Button for enabling or disabling wireless function.

3 Connecting to the Internet and Powering on

What you need:

- ♦ The Innbox E80 home gateway (included in the package)
- ♦ The power-supply adapter (included in the package)
- ♦ Ethernet RJ-45 cable



Steps to follow:

1. Plug the DC jack of the power adapter to the to the Power port on the home gateway, and the other end to your electricity power outlet.
2. Plug one end of the Ethernet cable to the WAN port on your home gateway, and the other end to your uplink line (Internet Service Provider connection).
3. The On/Off button is used to turn the home gateway on or off. The device is turned on when this button is pressed in.
4. When you turn the home gateway on, observe the light indicators. It takes about 30 seconds for the home gateway to boot up - the Power and WAN lights must be lit.

4 Connecting Your Devices

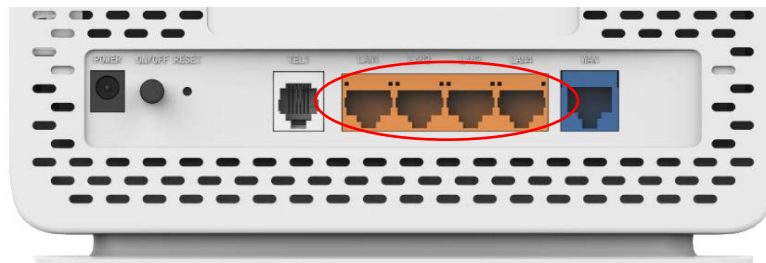
4.1 Connecting a Computer

What you need:

- ♦ The Innbox E80 home gateway (included in the package);
- ♦ An Ethernet RJ-45 UTP cable (included in the package);
- ♦ A personal computer or a similar device (not included in the package).

Steps to follow:

1. Plug one end of the Ethernet cable to one of the four ports on the home gateway (LAN1, 2, 3 or 4).



The ports might be pre-configured for a specific service (data or video). If you obtain such information from your service provider, plug the computer to the designated port only.

2. Plug the other end of the Ethernet cable to the Ethernet port on your computer.

When the Innbox E80 home gateway is switched on and your computer connected, pay attention to the corresponding LAN light indicator. The light indicator should be on uninterruptedly or blinking.

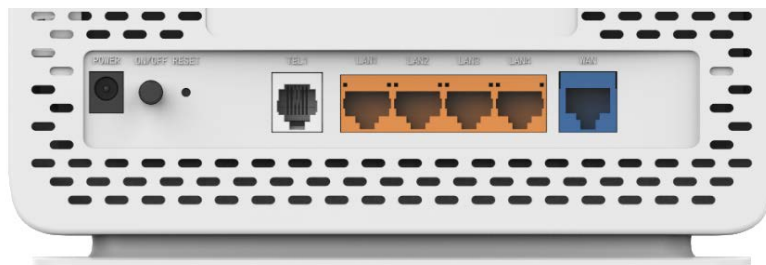
4.2 Connecting a Set-Top Box

What you need:

- ♦ The Innbox E80 home gateway (included in the package);
- ♦ An Ethernet RJ-45 UTP cable (included in the package);
- ♦ A set-top box (not included in the package).

Steps to follow:

1. Plug one end of the Ethernet cable to one of the four ports on the home gateway (LAN1, 2, 3 or 4).



The ports might be pre-configured for a specific service (data or video). If you obtain such information from your service provider, plug the set-top box to the designated port only.

2. Plug the other end of the Ethernet cable to the Ethernet port on your set-top box.

When the Innbox E80 home gateway is switched on and your set-top box connected, pay attention to the INTERNET light indicator. The light indicator should be on uninterruptedly or blinking.



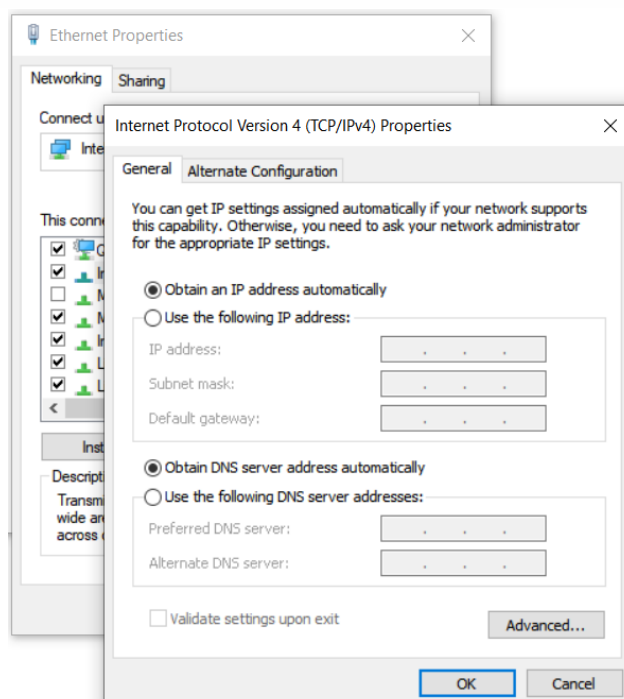
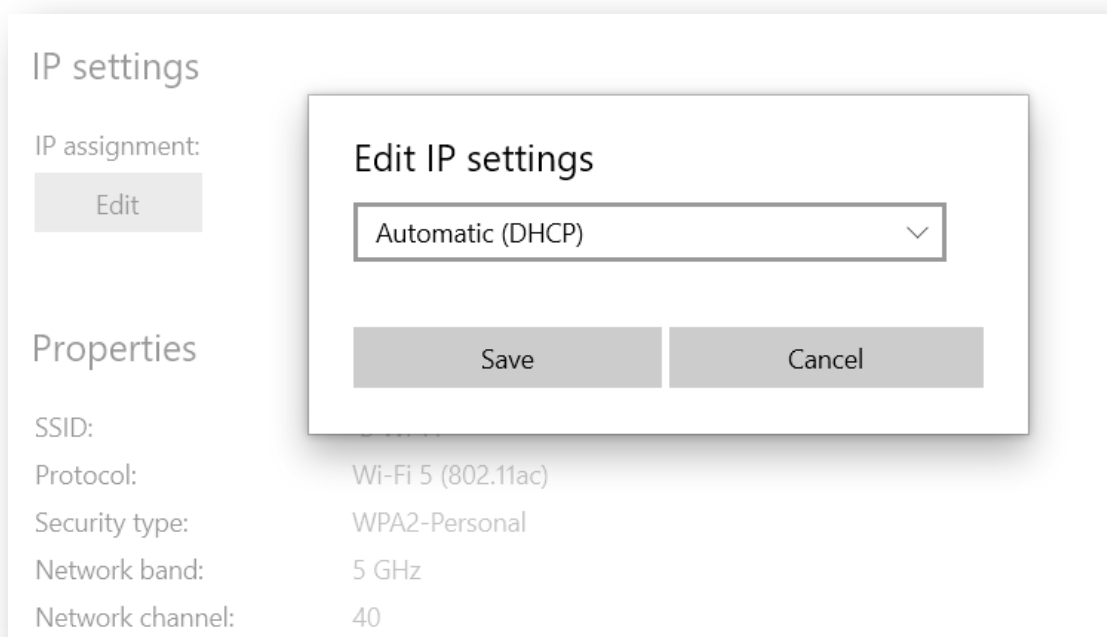
For instructions on how to connect or use your set-top box, please refer to the user documentation of your set-top box.

If you have properly connected the set-top box device to your TV set, you can start using the TV and video services immediately.

5 Setting up Internet Access on the Computer

Once you have powered on the Innbox E80 home gateway and connected the computer to it, you are ready to access the internet. The internet connection should be established automatically.

i Before you start using the internet, make sure that you have your PC set up to obtain the IP address automatically. This is done in the Local Area Connection properties or settings in your operating system.



6 Web Management

The web management enables you to view or edit the settings of the Innbox E80 home gateway, or to configure the plethora of supported functions.

6.1 Accessing the Web Management

What you need:

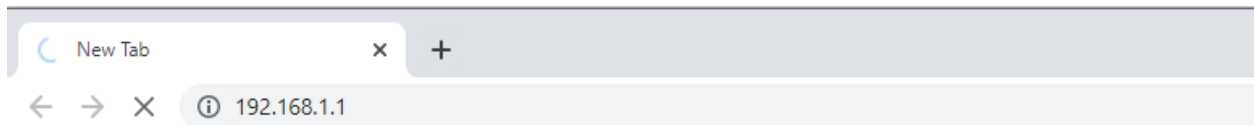
- ♦ Make sure that the Innbox E80 home gateway is powered on and connected as described above;
- ♦ Make sure that your computer is connected to the Innbox E80 and configured as described above;
- ♦ The IP address of the home gateway – the default address is 192.168.1.1;
- ♦ Login information – the default username is "user" and the default password is "user".



The actual login information could differ from the above. Please check the label on the bottom of the device or consult your service provider.

Steps to follow:

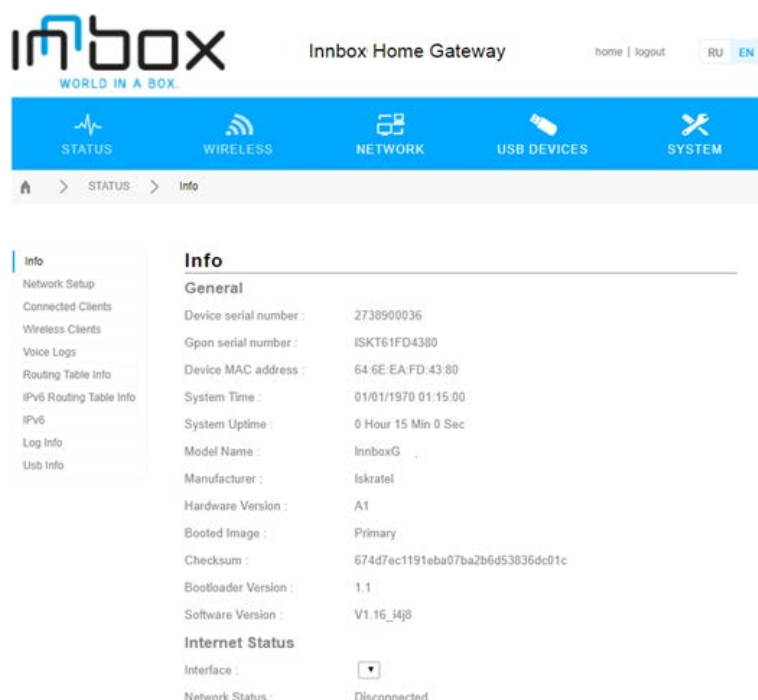
1. Start an internet browser on your computer;
2. In the address bar, type "192.168.1.1" (or the IP Address if not default) and hit Enter;



3. Once prompted, enter your login credentials (the username and password).
4. Follow direction from your service provider to enjoy the vast configuration options that your Innbox E80 device offers.

6.2 Getting around the Web Management

The user interface of web management is simple and intuitive.



Left frame (navigation tree) lists the home gateway functions that you can change. The function names act as hyperlinks: when you click a link, the corresponding configuration page is displayed in the right frame.

Right frame (display area) displays a configuration page for the selected function.

7 FCC Statement

This equipment has been tested and found to comply with the limits for a Class B digital device, pursuant to FCC Title 47 CFR Part 15. These limits are designed to provide reasonable protection against harmful interference in a residential installation. This equipment generates, uses and can radiate radio frequency energy and, if not installed and used in accordance with the instructions, may cause harmful interference to radio communications. However, there is no guarantee that interference will not occur in a particular installation. If this equipment does cause harmful interference to radio or television reception, which can be determined by turning the equipment off and on, the user is encouraged to try to correct the interference by one or more of the following measures:

- Reorient or relocate the receiving antenna.
- Increase the separation between the equipment and receiver.
- Connect the equipment into an outlet on a circuit different from that to which the receiver is connected.
- Consult the dealer or an experienced radio/TV technician for help.

FCC Radiation Exposure Statement

This device complies with FCC radiation exposure limits set forth for an uncontrolled environment and it also complies with FCC Title 47 CFR Part 15 Rules. This equipment must be installed and operated in accordance with provided instructions and the antenna(s) used for this transmitter must be installed to provide a separation distance of at least 20 cm from all persons and must not be co-located or operating in conjunction with any other antenna or transmitter. End-users and installers must be provided with antenna installation instructions and consider removing the no-collocation statement.

This device complies with FCC Title 47 CFR Part 15 Rules. Operation is subject to the following two conditions:

1. this device may not cause harmful interference, and
2. this device must accept any interference received, including interference that may cause undesired operation.

Caution!

Any changes or modifications not expressly approved by the party responsible for compliance could void the user's authority to operate the equipment.

8 IC Statement

This device contains license-exempt transmitter(s)/receiver(s) that comply with Innovation, Science and Economic Development Canada's license-exempt RSS(s) documentation. Operation is subject to the following two conditions:

1. This device may not cause interference.
2. This device must accept any interference, including interference that may cause undesired operation of the device.

The device for operation in the band 5150-5250 MHz is only for indoor use to reduce the potential for harmful interference to co-channel mobile satellite systems.

L'émetteur/récepteur exempt de license contenu dans le présent appareil est conforme aux CNR d'Innovation, Sciences et Développement économique Canada applicables aux appareils radio exempts de license. L'exploitation est autorisée aux deux conditions suivantes :

1. L'appareil ne doit pas produire de brouillage;
2. L'appareil doit accepter tout brouillage radioélectrique subi, même si le brouillage est susceptible d'en compromettre le fonctionnement.

Les dispositifs fonctionnant dans la bande 5150-5250 MHz sont réservés uniquement pour une utilisation à l'intérieur afin de réduire les risques de brouillage préjudiciable aux systèmes de satellites mobiles utilisant les mêmes canaux.

The device meets the exemption from the routine evaluation limits in section 2.5 of RSS 102 and compliance with RSS-102 RF exposure, users can obtain Canadian information on RF exposure and compliance.

Le dispositif rencontre l'exemption des limites courantes d'évaluation dans la section 2.5 de RSS 102 et la conformité à l'exposition de RSS-102 rf, utilisateurs peut obtenir l'information canadienne sur l'exposition et la conformité de rf.

This transmitter must not be co-located or operating in conjunction with any other antenna or transmitter. This equipment should be installed and operated with a minimum distance of 20 centimeters between the radiator and your body.

Cet émetteur ne doit pas être Co-placé ou ne fonctionnant en même temps qu'aucune autre antenne ou émetteur. Cet équipement devrait être installé et actionné avec une distance minimum de 20 centimètres entre le radiateur et votre corps.

Document issued by



Iskratel, d. o. o., Kranj

Ljubljanska cesta 24a
SI 4000 Kranj, Slovenia

T +386 4 207 20 00

F +386 4 207 27 12

info@iskratel.si
www.iskratel.com

————— (END OF DOCUMENT) —————