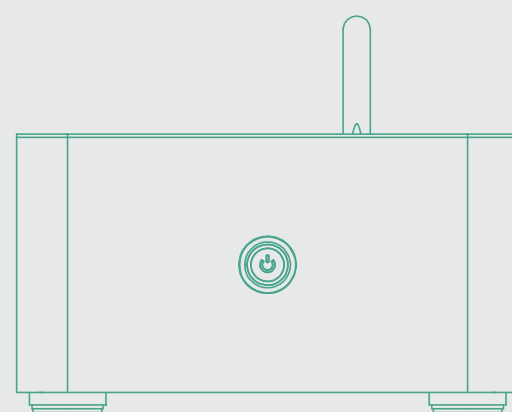




Product Operation Manual of Easywelcome Intelligent Air Guard



► Product Manual of
Intelligent Air Guard

Nanjing Yiwei AI Tech Industrial Development Co.,ltd

📍 Add: No.12,Mozhou East Road,Jiangning District,
Nanjing Ciyt,Jiangsu Province

☎ 025-87159600/87159608

🌐 www.slicity.com

✉ markets@slicity.com



PLEASE READ THE INSTRUCTION
CAREFULLY BEFORE USING THE PRODUCT

THANK YOU FOR PURCHASING AND
USING OUR INTELLIGENT AIR GUARD.
FOR YOUR SAFETY AND INTERESTS,
PLEASE READ THE PRODUCT MANUAL
CAREFULLY BEFORE USING THE PRODUCT.
THE COMPANY WILL NOT BE LIABLE FOR
ANY PERSONAL INJURY, PROPERTY OR
OTHER LOSS CAUSED BY YOUR FAILURE
TO FOLLOW THE INSTRUCTIONS OR
FOLLOW THE PRECAUTIONS.



Warning!

This product does not belong to the category of medical devices.

This product does not have waterproof function, do not be exposed to drip or splash leakage environment. This product will emit pungent odor when ozone mode is working. Please use it after personnel leave. This product is not suitable for the use environment of easy oxidation explosion.

CONTENTS

目录

01 - - - - - Operation guide

01 - - - - - Product parameters

02 - - - - - Product structure

03 - - - - - Operation guide

11 - - - - - Function description

17 - - - - - FQA

18 - - - - - Three guarantees for EW intelligent air guardian

19 - - - - - Maintenance record of disinfection machine

20 - - - - - About the product specification



Operation guide:

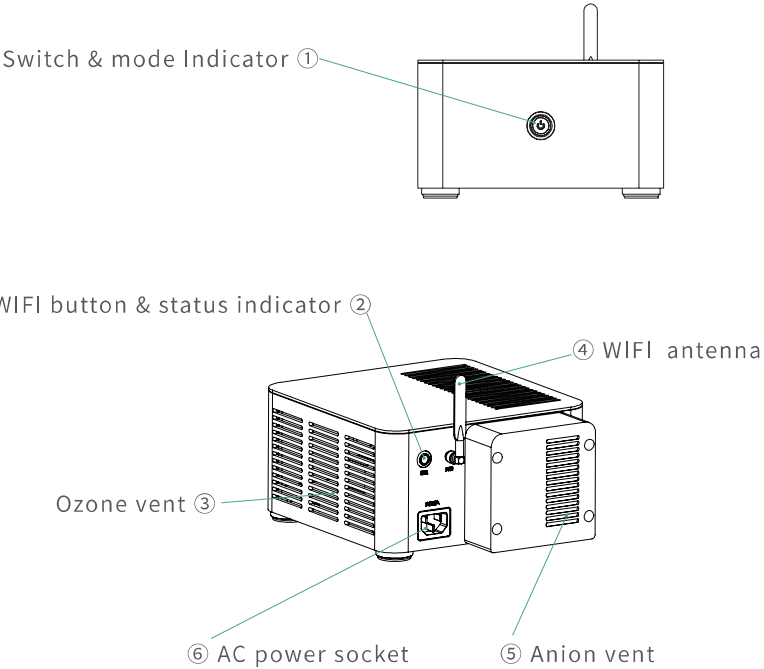
- ① Device host 1set
- ② Power cable 1pcs
- ③ WIFI Antenna 1pcs
- ④ Operation manual 1pcs

Product parameters

Product name	Ewi intelligent air guardian
Model	EW-ZNKQWS/EW-E-EIAG/EW-A-EIAG
Air type	AS
Type of cooling	Air patenting
Frequency	2.4GHZ
Product size	197*237*110mm
Power Supply	AC 220V/AC 230V/AC 110V
Rated power	Purification mode: 8W Disinfection mode: 95W
Production of super oxygen	10g/h
Aeroanion concentration	7.3x10^6pcs/cm³
N.W.	2.5KG

Product structure

- ①、Switch & mode Indicator
- ②、WIFI button & status indicator
- ③、Ozone vent
- ④、WIFI antenna
- ⑤、Anion vent
- ⑥、AC power socket

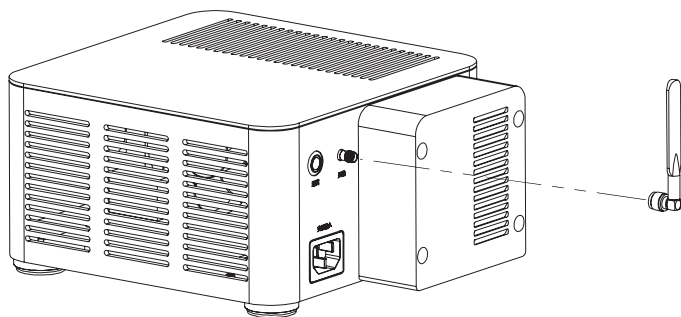




Operation guide

◆ Preparatory work before starting the machine

1、Mounting antenna



2、AC power cable connecting

3、Download the app

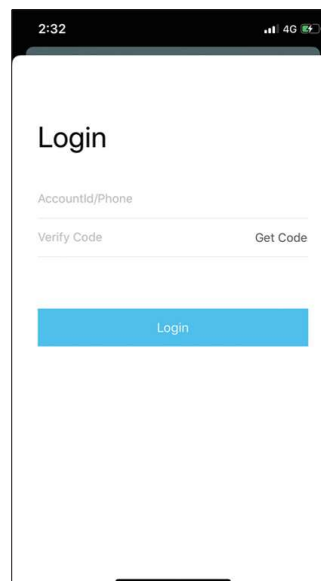


Please use your mobile phone to scan the above QR code to download and install the app.



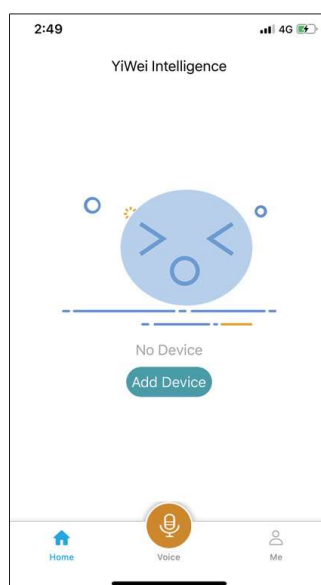
APP login

After downloading, enter the APP. The login interface is as follows:



① Click Start now

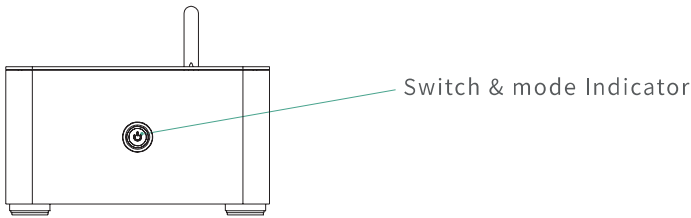
② Login and register at same time



③ If this is your first time to use our product, you will see these.



◆ Power on & Power off



Position refers to switch button and status indicator.
When the device is powered on, long press this button for power on and power off .

Status indication

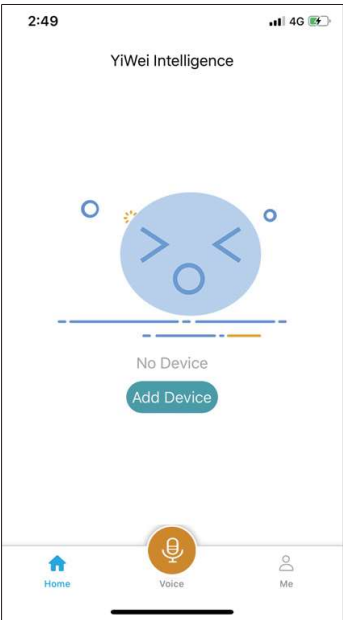
Stand by	Purification mode	Disinfection mode	Power off
Blue light	Green light	Red light	No light

◆ Network configuration

Remark:the target wifi network which device connect to must be same as the one your smart phone connect to when you configuring wifi network to device. After configuration, the network of your smart phone can be different from the device.

Step1:

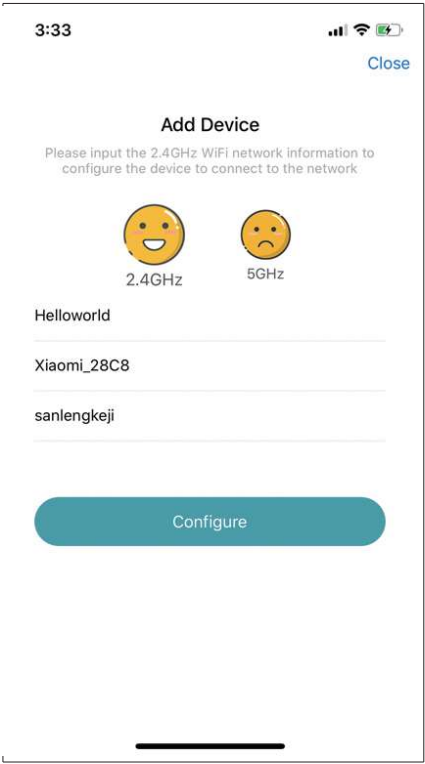
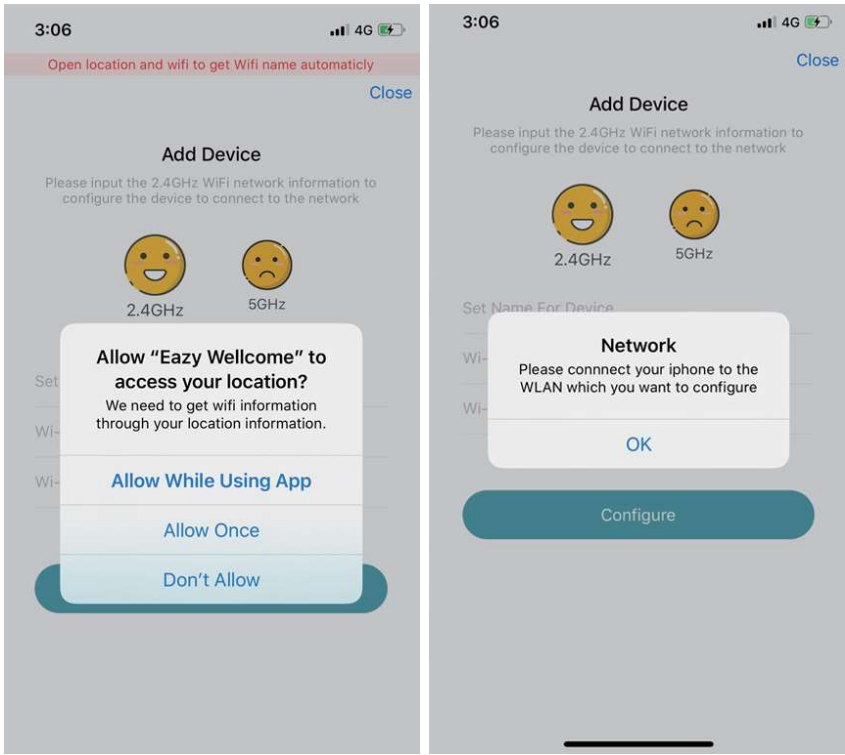
Click add device, set a name for device customization, and click Next to set network configuration.



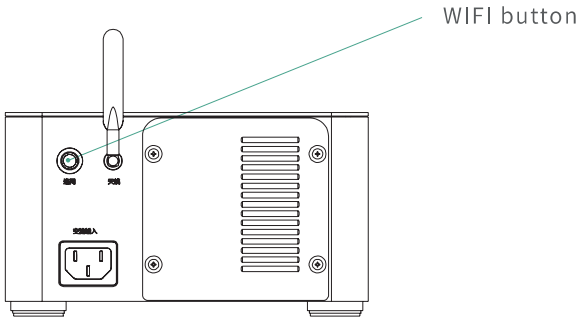


Step 2:

Selcet“Allow While Using App” and enter the correct wifi password, then long press WIFI button until hearing voice of “Starting network configuration” and flashing green light. Then click "Configure" in the APP and wait for automatic network distribution.



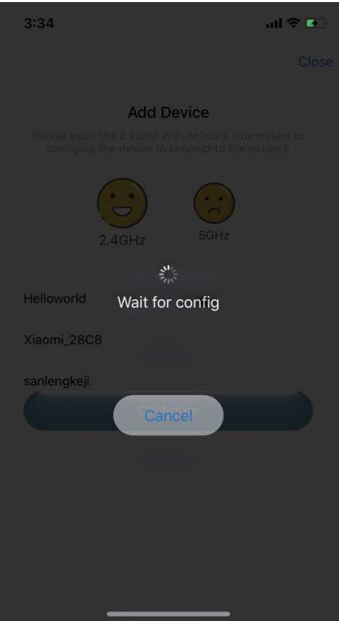
Click Configure



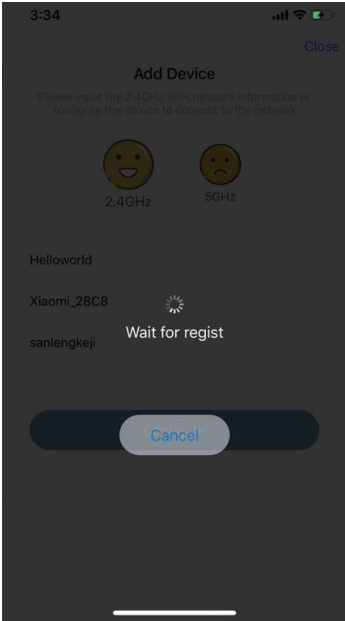


Step3:

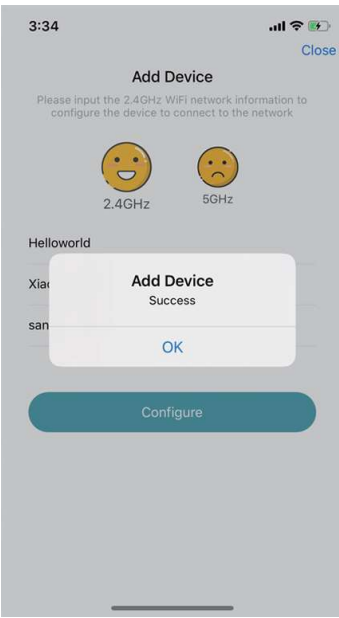
Waiting for success of connecting the network, the page is as follows. After the network configuration is successful, the wifi button indicator light flashes slowly on the green light.



Configure WiFi



Binding device



Success

Step4:

After successful registration binding, enter the operation interface.



- A、Device Lis
- B、TVOC monitoring
- C、Custom Scene
- D、Switch on the purification mode
- E、Voice control
- F、Add the device
- G、Temperature and humidity monitoring
- H、Switch on the disinfectionmode



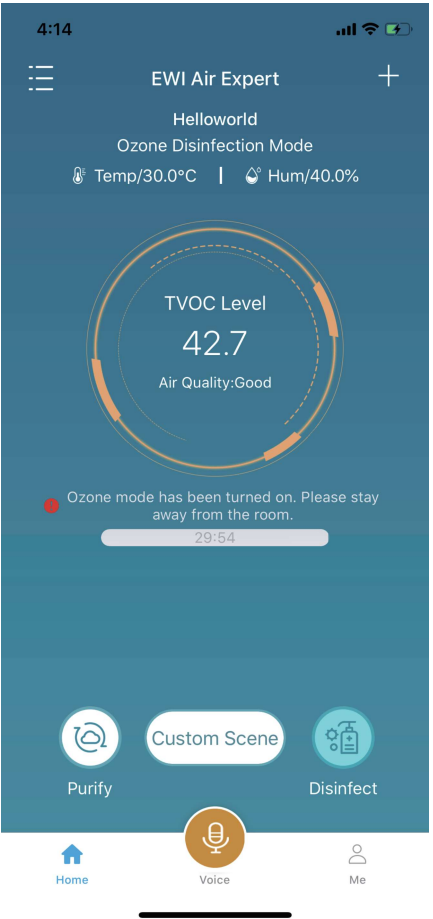
Function description

Air Purification Mode



After successful WIFI network configuration, the default mode is purification mode, this mode can be always opened if need.

Ozone Disinfection Mode



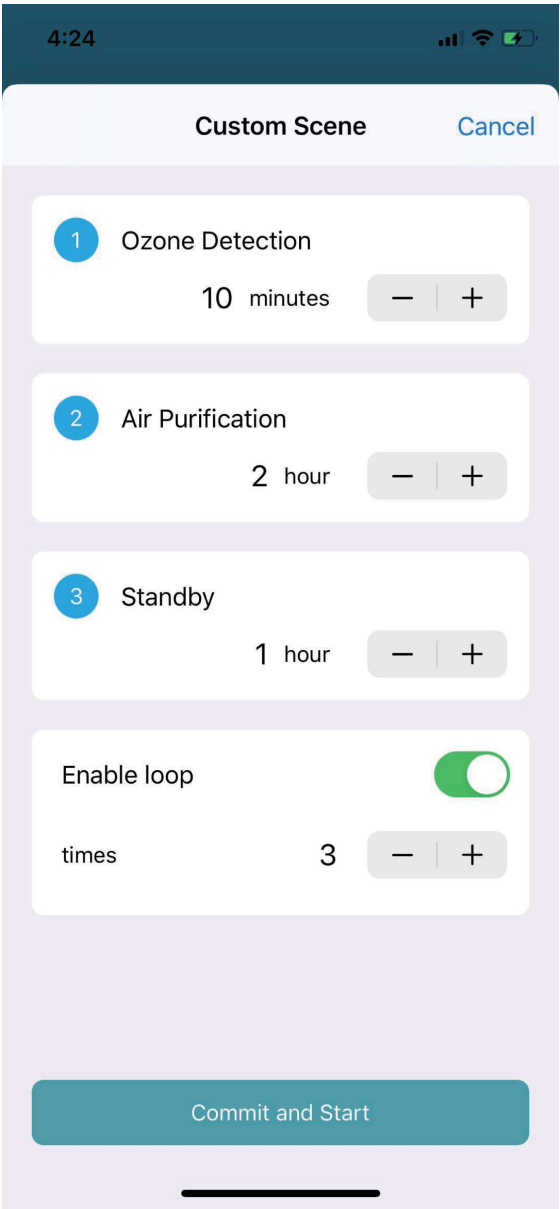
You can enter disinfection mode by pressing Ozone button , LED of front button is red after changing to disinfection mode successfully.

Remark: The max working time of disinfection mode is 30min, the device must be changed to other mode at least 1 hour after running 30 minutes constantly.

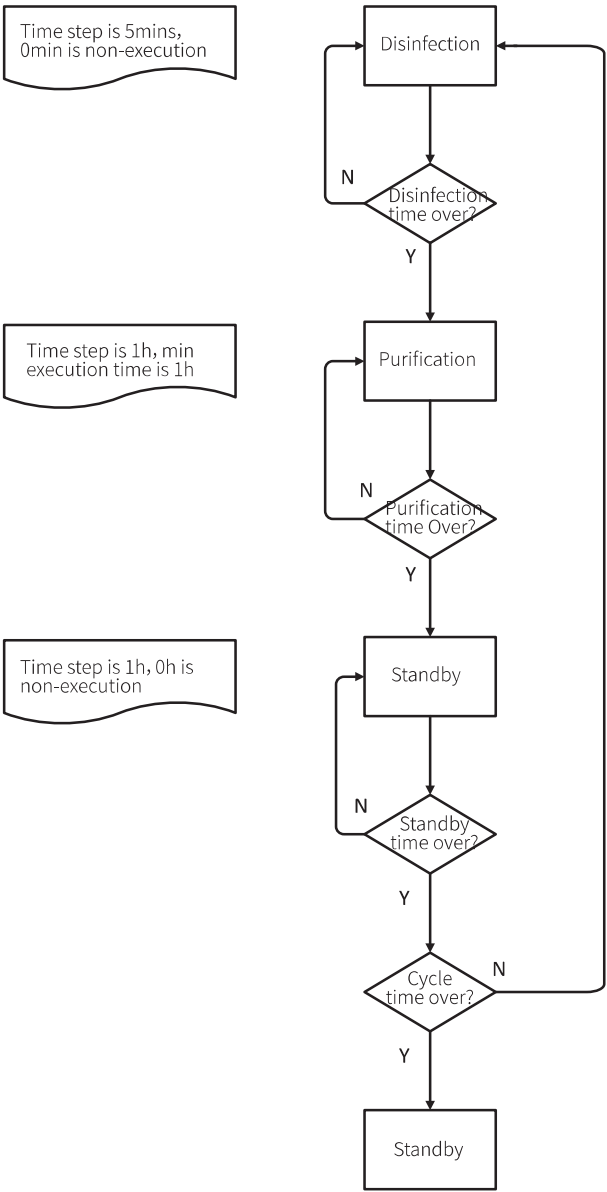


◆ Custom Scene

You can press “custom scene” button to define your working mode according to different application scene.



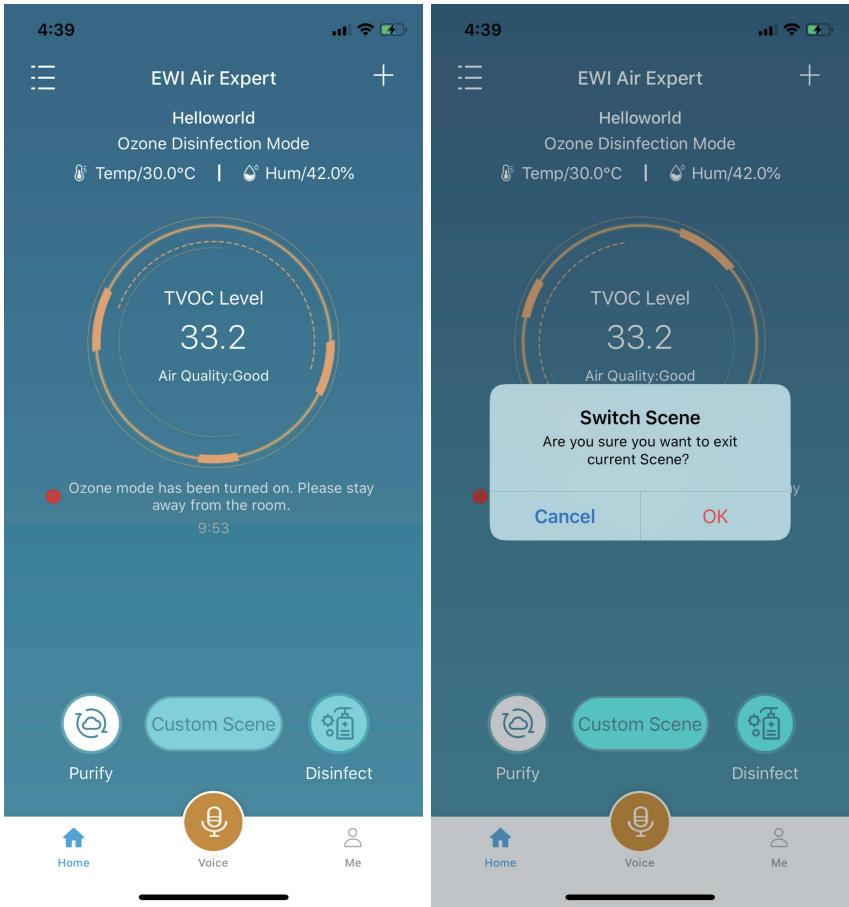
◆ The work process of custom scenes:





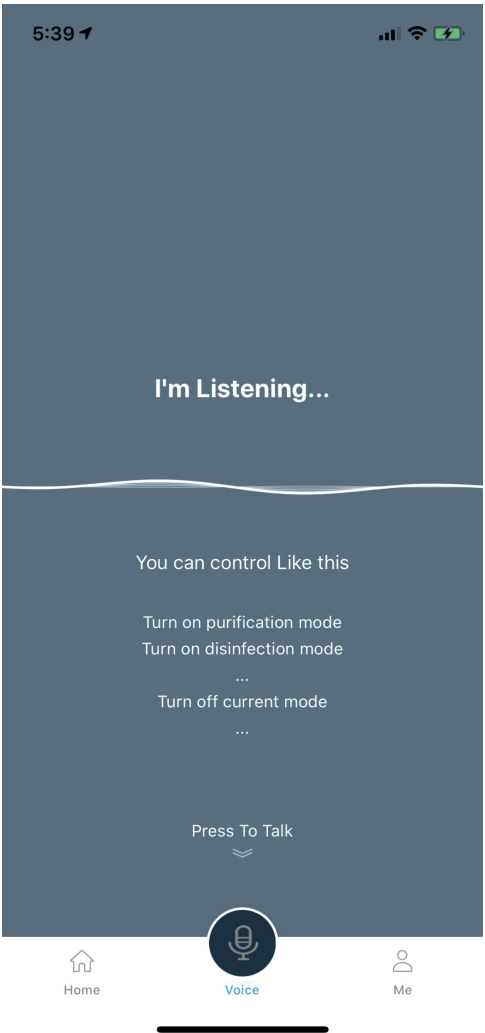
◆ Exit custom scene

Pressing “purification” or “Ozone” button to enforce exiting current mode.



◆ Voice control

You can voice control the device with voice button, such as "Turn on purification mode" and "turn off ozone mode."





FAQ

- 1、If the distribution network is unsuccessful,
please check the following points
- a. Please make sure that the mobile phone you are
using has the corresponding permission;

b. Please make sure AP connecting to your smart
phone and Device is same.

c. Please make sure that the network distribution
button of Air Guard is pressed;

d. Please make sure whether the target connection
network can connect to the external network;
- 2、 When the mobile phone fails to connect to the
hotspot, please check the following points:
- A. Please make sure using one smart phone as AP,
using another smart phone to configure network.

B. After configuration successful, the smart phone
using as AP can be used to control device.
- 3、Power off and re-connection
- The device will be auto-connected to WIFI which it
connected to before after power off and restarting
based on initial network configuration successfully.



Three guarantees for EW
intelligent air guardian

EASYWELCOME | THREE WARRANTY

The User Information

Name	E-mail
Contact Number	
Postal Code	Address

Seller Information

Model
SN:serial number
Manufacturing Place

Seller Information

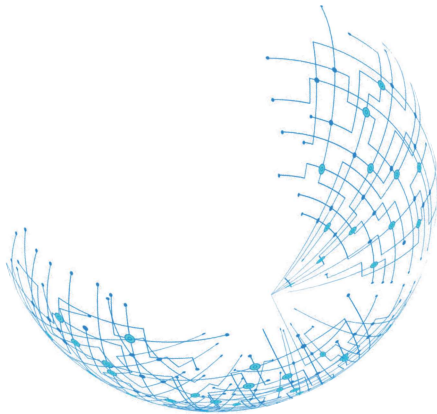
Seller Name	Postal Code
Contact Number	Invoice Number
Address	Pre-sale Date



Maintenance record of disinfection machine

Maintenance Record Of Disinfection Machine

Date of repair	failure description/ failure cause/ treatment result	Use of spare parts	Submit date	Signature of maintenance center/ signature of maintenance personnel



About the product specification

The copyright, trademark and brand name of the specification belong to our company;The actual product shall prevail. If the product is upgraded or changed, please follow the information on the official website without prior notice.

If you have any objection to any contents or terms of the manual, please submit a written objection to us within seven days after purchase. Otherwise, you shall be deemed to have agreed to understand and accept all contents of the manual.



FCC Warning Statement

Changes or modifications not expressly approved by the party responsible for compliance could void the user’s authority to operate the equipment. This equipment has been tested and found to comply with the limits for a Class B digital device, pursuant to Part 15 of the FCC Rules. These limits are designed to provide reasonable protection against harmful interference in a residential installation. This equipment generates uses and can radiate radio frequency energy and, if not installed and used in accordance with the instructions, may cause harmful interference to radio communications. However, there is no guarantee that interference will not occur in a particular installation. If this equipment does cause harmful interference to radio or television reception, which can be determined by turning the equipment off and on, the user is encouraged to try to correct the interference by one or more of the following measures:

- - Reorient or relocate the receiving antenna.
- - Increase the separation between the equipment and receiver.
- - Connect the equipment into an outlet on a circuit different from that to which the receiver is connected.
- - Consult the dealer or an experienced radio/TV technician for help.

FCC Radiation Exposure Statement

The antennas used for this transmitter must be installed to provide a separation distance of at least 20 cm from all persons and must not be co - located for operating in conjunction with any other antenna or transmitter.

This device complies with part 15 of the FCC Rules. Operation is subject to the following two conditions:

- (1)This device may not cause harmful interference, and (2) this device must accept any interference received, including interference that may cause undesired operation.