

SOUNDROVER PRO650

BI-AMPLIFIED ACTIVE SPEAKER

WALL POWERED FOR 650W PEAK POWER

WITH BUILT IN MIXER
AND LIGHTING EFFECT



ITEM: IMT8400



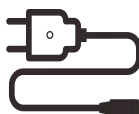
QUICK START GUIDE

1.

IN THE BOX



IMT8400 SoundRover
Wireless Party Speaker



Power Cable



Wireless Microphone



Tripod

2.

INPUT CONNECTIONS

The Soundrover Pro includes a Mixer which allows two Mics (or 1 Mic and 1 Guitar) to be mixed with Auxiliary In (any line/headphone level source such as a CD player or drum machine etc.) and BT or FM or SD/USB Playback.

Adjust relative level of Mic 2 and amount of reverb with LEVEL and REVERB controls

Adjust relative level of Mic 1 and amount of reverb with LEVEL and REVERB controls

Channel 1 can be switched between Mic and Guitar (high impedance) modes

Mic 1 / Guitar Input 1/4" Unbalanced

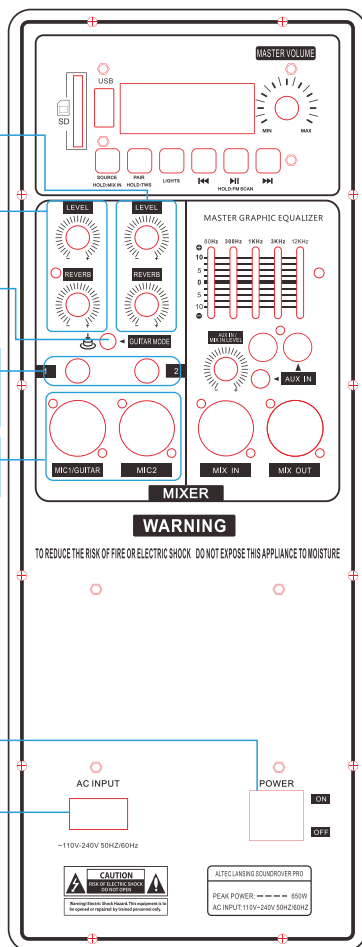
Mic 2 Input 1/4" Unbalanced

Mic 1 Input XLR Balanced

Mic 2 Input XLR Balanced

POWER SWITCH

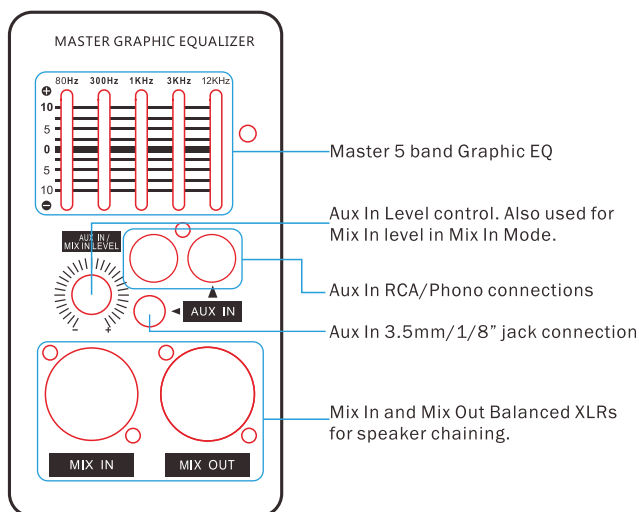
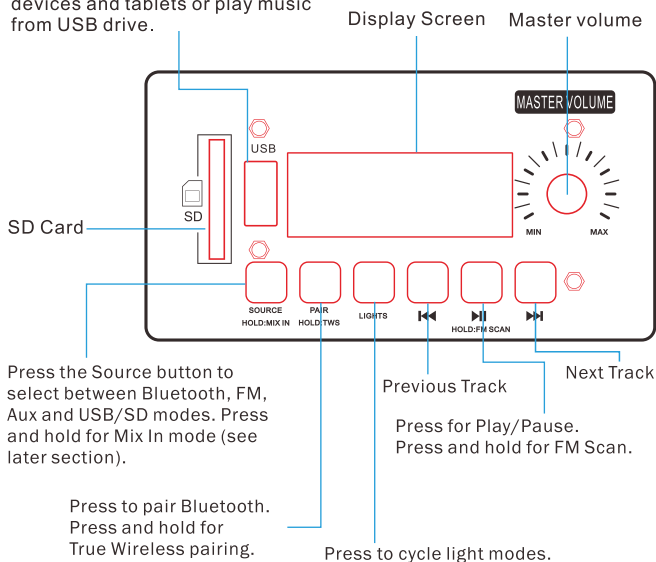
AC INPUT: to connect to wall power.



3.

SOURCE CONTROL / FURTHER CONNECTIONS

USB Port: Use to charge mobile devices and tablets or play music from USB drive.



4.

AUDIO MODES

Bluetooth

Press the Source button until 'bt' is shown on the display.

Go to the Bluetooth page in the Settings of your phone/tablet. Make sure Bluetooth is on before connecting to the available device "AL SOUNDOVER PRO".

If the speaker does not automatically go into pairing after turning it on press the PAIR button.



Reconnection

When BT is selected the Soundrover Pro will auto-reconnect to a previously paired device if it is nearby. To drop a current connection and pair to a different device press the PAIR button.

FM Radio

1. Press the Source button until FM is shown on the display, then press and hold the **FM** button to perform an FM Radio Scan. The speaker will store the strongest stations as presets.

2. Press the **FM** and **FM** buttons to switch between presets.

SD/TF/USB Playback

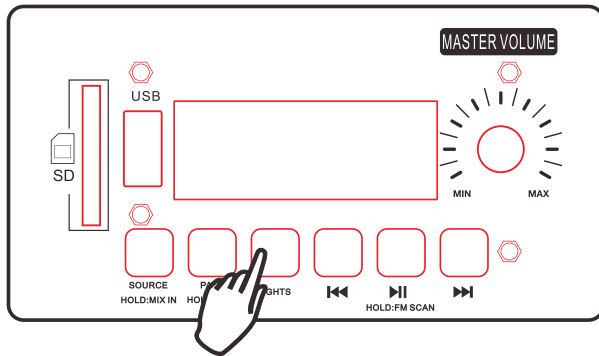
Insert an SD (or TF in an SD carrier) card or USB stick. The Soundrover Pro will automatically select the SD/TF/USB source, if there is a card/USB inserted you can also press the SOURCE button until TF or USB is shown in the display.

Aux Input

The Aux input can be mixed with any source (and Mic1/2/Guitar). Connect via the Stereo RCA/Phone Inputs or 3.5mm / 1/8" jack and use the AUX IN LEVEL to adjust the input level.

5.

LIGHT MODES



Press the LIGHTS button to activate the lighting and change mode.

There are 7 lighting modes.

- Mode 1: White Chase
- Mode 2: Color Chase
- Mode 3: Color Fade
- Mode 4: Color Rotate
- Mode 5: Multi Color
- Mode 6: Color Pulse
- Mode 7: Color Bargraph

6.

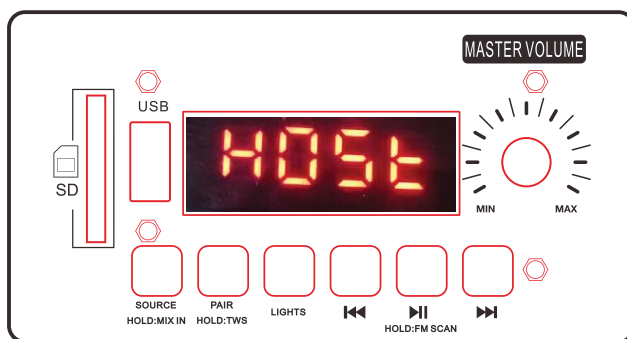
TRUE WIRELESS PAIRING

Two Soundrover Pros can be paired together as a Stereo Pair for Bluetooth Playback via TWS pairing. When paired this way the second speaker is a wireless slave to the first.

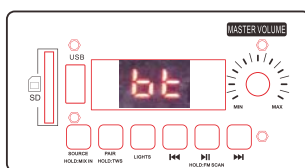
Note this mode only works for Bluetooth playback.

The Mix In/Mix Out feature (see later section) allows zero latency wired playback of several speakers from any source for Pro use.

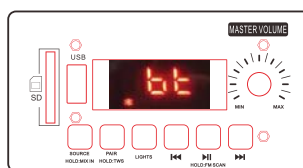
1. Turn the first speaker on and pair it to a compatible Bluetooth device.
2. Press and hold the Bluetooth/Pair button on the first speaker for two seconds. "HOST" will appear on the display screen indicating it is the main speaker.



3. Turn on the second speaker. Press the Bluetooth/Pair button and "BT" will appear on the display screen. When this appears the first speaker will automatically connect to the second speaker.



Second Speaker



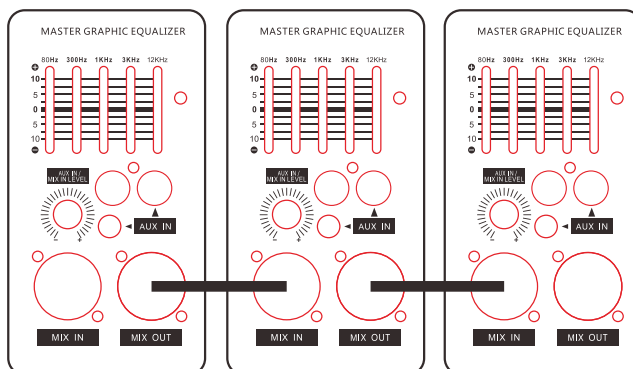
Main Speaker

4. To disconnect the True Wireless function, press the Bluetooth/Pair button on either speaker.

7.

MIX IN AND OUT

Multiple Soundrover Pros can be wired together in a chain for playback of the same source. When chained in this way all speakers play whatever is being played on the Main speaker including any Mics/Guitars or Aux that are connected to it. Mix Out is a wired fixed level line output from the mixer (Pre Master Volume) with no latency.



Use a suitable screened balanced XLR-XLR cable to connect from the MIX OUT of the first speaker to the MIX IN of the second. Then another from the MIX OUT of the second to a third and so on.

Connect to and play a source on the first speaker in the normal way. For the second speaker press and hold the SOURCE/MIX IN button, 'MIX' will appear on the display.

Initially set the Master Volume to the same level as the first speaker then use the AUX IN/MIX IN LEVEL control to adjust the input level, it should normally be around half way and adjusted up/down to achieve balance with the first speaker. After this use each speakers Master Volume if needed.

Repeat the process for any other speakers.

8.

SAFETY PRECAUTIONS



9.

SPECIFICATIONS

Output Power: 650W Peak
Bluetooth Spec: V5.0
Bluetooth Range: up to 33 Feet
Power Supply: AC110-240V

10.

FCC STATEMENT

Changes or modifications not expressly approved by the party responsible for compliance could void the user's authority to operate the equipment.

This device complies with Part 15 of the FCC Rules. Operation is subject to the following two conditions: (1) this device may not cause harmful interference, and (2) this device must accept any interference received, including interference that may cause undesired operation.

This equipment has been tested and found to comply with the limits for a Class B digital device, pursuant to Part 15 of the FCC Rules. These limits are designed to provide reasonable protection against harmful interference in a residential installation. This equipment generates, uses and can radiate radio frequency energy and, if not installed and used in accordance with the instructions, may cause harmful interference to radio communications. However, there is no guarantee that interference will not occur in a particular installation.

If this equipment does cause harmful interference to radio or television reception, which can be determined by turning the equipment off and on, the user is encouraged to try to correct the interference by one or more of the following measures:

- Reorient or relocate the receiving antenna.
- Increase the separation between the equipment and receiver.
- Connect the equipment into an outlet on a circuit different from that to which the receiver is connected.
- Consult the dealer or an experienced radio/TV technician for help.
- The device has been evaluated to meet general RF exposure requirement.
- The device can be used in portable exposure condition without restriction.

Having Trouble? We're here to help!

Call us 24/7 at 1-855-292-4087
E-mail us at support@alteclansing.com
or visit us at alteclansing.com

Altec Lansing
Edison, NJ 08817

Keep manual and all relevant
information for future reference.

11.

WARRANTY CARD

This warranty covers the original consumer purchaser only and is not transferable.

This warranty covers products that fail to function properly UNDER NORMAL USAGE, due to defects in material or workmanship. Your product will be repaired or replaced at no charge for parts or labor for a period of one year.

What Is Not Covered by Warranty:

Damages or malfunctions not resulting from defects in material or workmanship and damages or malfunctions from other than normal use, including but limited to, repair by unauthorized parties, tampering, modification or accident.

To Obtain Warranty Service and Troubleshooting Information:

Call 1-855-292-4087 or Visit our website at www.alteclansing.com.

To receive Warranty service along with the name and address of an authorized product service center, the original consumer purchaser must contact us for problem determination and service procedures. Proof of purchase in the form of a bill of sale or receipted invoice, evidencing that the Product is within the applicable Warranty period(s), MUST be presented in order to obtain the requested service. It is your responsibility to properly package and send any defective products along with a dated copy of proof of purchase, a written explanation of the problem, and a valid return address to the authorized service center at your expense. Do not include any other items or accessories with the defective product. Any products received by the authorized service center that are not covered by warranty will be returned unpaired.

NO WARRANTIES, WHETHER EXPRESS OR IMPLIED, INCLUDING, BUT NOT LIMITED TO, ANY IMPLIED WARRANTIES OF MERCHANTABILITY OR FITNESS FOR A PARTICULAR PURPOSE, OTHER THAN THOSE EXPRESSLY DESCRIBED ABOVE SHALL APPLY. DISTRIBUTOR FURTHER DISCLAIMS ALL WARRANTIES AFTER THE EXPRESS WARRANTY PERIOD STATED ABOVE. NO OTHER EXPRESS WARRANTY OR GUARANTY GIVEN BY ANY PERSON, FIRM OR ENTITY WITH RESPECT TO THE PRODUCT SHALL BE BINDING ON DISTRIBUTOR. REPAIR, REPLACEMENT, OR REFUND OF THE ORIGINAL PURCHASE PRICE - AT DISTRIBUTOR'S SOLE DISCRETION - ARE THE EXCLUSIVE REMEDIES OF THE CONSUMER. IN NO EVENT WILL DISTRIBUTOR, ITS MANUFACTURERS, OR SAKAR INT. BE LIABLE FOR ANY INCIDENTAL, DIRECT, INDIRECT, SPECIAL, PUNITIVE OR CONSEQUENTIAL DAMAGES (SUCH AS, BUT NOT LIMITED TO, DAMAGES FOR LOSS OF PROFITS, BUSINESS, SAVINGS, DATA OR RECORDS) CAUSED BY THE USE, MISUSE OR INABILITY TO USE THE PRODUCT. EXCEPT AS STATED HEREIN, NO OTHER WARRANTIES SHALL APPLY. NOTWITHSTANDING THE FOREGOING, CONSUMER'S RECOVERY AGAINST DISTRIBUTOR SHALL NOT EXCEED THE PURCHASE PRICE OF THE PRODUCT SOLD BY DISTRIBUTOR. THIS WARRANTY SHALL NOT EXTEND TO ANYONE OTHER THAN THE ORIGINAL CONSUMER WHO PURCHASED THE PRODUCT AND IS NOT TRANSFERABLE.

Some countries, states or provinces do not allow the exclusion or limitation of incidental or consequential damages or allow limitations on warranties, so limitation or exclusions may not apply to you. This warranty gives you specific legal rights, and you may have other rights that vary from state to state or province to province. Contact your authorized retailer to determine if another warranty applies. This product is manufactured, distributed and sold by SAKAR International, Inc. All other trademarks are the property of the respective owner, who has not sponsored, endorsed or approved this product.

JUST LISTEN.

The Bluetooth® word mark and logos are registered trademarks owned by the Bluetooth SIG, Inc. and use of such marks by AL Infinity, LLC is under license. Other trademarks and trade names are those of their respective owners.