

# USER MANUAL



## MYHT-02 · Wireless Charger

Thank you for purchasing our products. X1 is a wireless charger that is suitable for smart phone charging. To help you enjoy the fast and safe wireless charging experience more quickly, please read this manual carefully. Thank you!

### Method of use

#### **1** Link

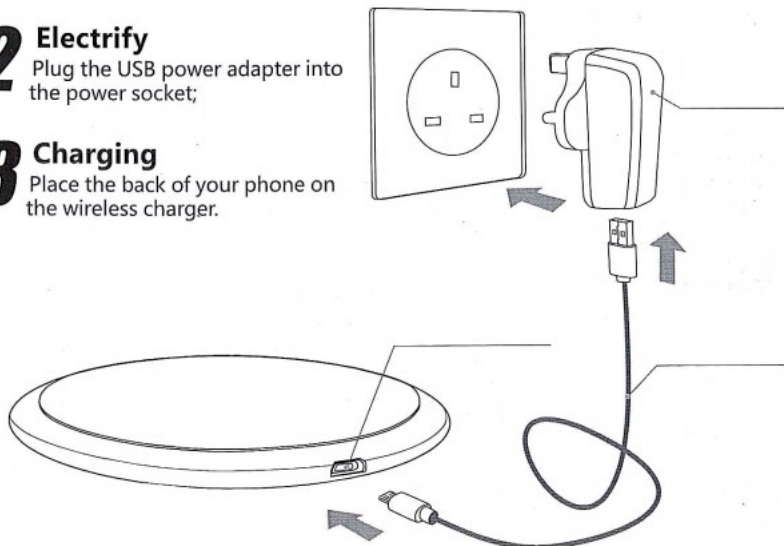
Take out the USB power cord and connect one end to the USB interface of the power adapter; The other end connects to the wireless charger's MicroUSB interface;

#### **2** Electrify

Plug the USB power adapter into the power socket;

#### **3** Charging

Place the back of your phone on the wireless charger.



## Specification

Product Mode : X1	Standard : WPC-Qi
Normal Input : DC 5V / 2A (Max)	Normal Output : 5V / 1A (Max)
Fast Input : DC 9V / 1.67A(Max)	Fast Output : 9V / 1.2A ( Max )
Working Frequency : 100~205KHz	Conversion efficiency : $\geq 73\%$

## Working state

1. Electric standby: after the power is connected, the X1 is self-checked and the indicator light flashes off and goes into standby mode.
2. Inductive charge: put on the phone or other device that supports Qi standard wireless charging reception, automatically enter the charging status, and the indicator light is always bright;
3. Charging stop: when people remove the receiving equipment, the X1 light goes out, restoring the standby mode;
4. Abnormal indication: when the indicator is flashing, it indicates that the charging process is abnormal;

## Considerations

1. Please use the qualified USB power adapter (output 5V/2A and above), otherwise the wireless charging will not be stable due to lack of power;
2. Do not place any metal sundries or magnets on the X1 during the charging process, otherwise the X1 may be damaged or abnormal;
3. In the process of use, if the heat of the X1 or receiving equipment is too high, the charge will be stopped. Please remove the equipment and then try to recharge it after cooling.

## Safety Tips

### Carry and use wireless charger to recharge for your smartphone

The wireless charger has sensitive components, no throwing, beating, vibration, violent shaking or removing; Do not baking in microwave oven, burning, painting or foreign objects inserting. Otherwise, the internal components and precision structure will be damaged. If the product is damaged, such as broken, water or is punctured, please do not continue to use.

### Keep the wireless charger outer surface clean

If the product is exposed to any contaminants that could be cause dirty, such as ink, dye, cosmetic, dirt, food, oil, lotion etc, please clean it immediately. If clean, please remove all cables that connect to this product, use soft, slightly damp, lint-free cloth to wipe. Avoid getting moisture in opening. Do not use window cleaner, household cleaner, aerosol spray, solvents, alcohol, ammonia or abrasive to clean product.

### Avoid placing in water or damp places

Do not expose the product to water, rain or use it in damp place. Be careful not to spill any food or liquid on the product. In case the product into water, take out all cables and then clean, it can't be used until completely dry. Do not try to use external heat resource (such as microwave oven or hair dryer) drying the product. Damaged by contact with liquid is beyond of the scope of warranty.

### Repair or modify the product

Do not attempt to repair or modify the product. In addition to packaging, the product does not contain any parts that repaired by user. Disassemble the product (including external screws and remove the back cover) may cause damaged, and that is beyond of warranty. If the product has been submerged in water, punctured, or subjected to a severe fall, please do not use it before sent to the repair center. Only manufacturer or authorized service provider can repair.

NOTE: This equipment has been tested and found to comply with the limits for a Class B digital device, pursuant to part 15 of the FCC Rules. These limits are designed to provide reasonable protection against harmful interference in a residential installation. This equipment generates uses and can radiate radio frequency energy and, if not installed and used in accordance with the instructions, may cause harmful interference to radio communications. However, there is no guarantee that interference will not occur in a particular installation. If this equipment does cause harmful interference to radio or television reception, which can be determined by turning the equipment off and on, the user is encouraged to try to correct the interference by one or more of the following measures:

- Reorient or relocate the receiving antenna.
- Increase the separation between the equipment and receiver.
- Connect the equipment into an outlet on a circuit different from that to which the receiver is connected.
- Consult the dealer or an experienced radio/TV technician for help

Changes or modifications not expressly approved by the party responsible for compliance could void the user's authority to operate the equipment.

This device complies with Part

15 of the FCC Rules. Operation is subject to the following two conditions:

- (1) this device may not cause harmful interference, and
- (2) this device must accept any interference received, including interference that may cause undesired operation.

### **RF Exposure Warning Statements:**

This equipment complies with FCC radiation exposure limits set forth for an uncontrolled environment. This equipment shall be installed and operated with minimum distance 20cm between the radiator & body.