

Aroma Diffuser
User Manual



Safety Feature

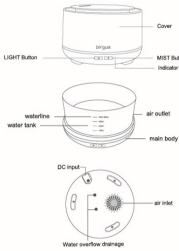
As a safety feature the Birgus Aroma Diffuser has an automatic low water detection system. When the diffuser detects a low water presence it will automatically shut down the device for your safety. There will always be a small amount of water left in the water reservoir tank for safe operation. If you enjoy Birgus Aroma Diffuser, we would love it if you share you experience with others.

If any question or problem, please contact us.
support@birgusai.com

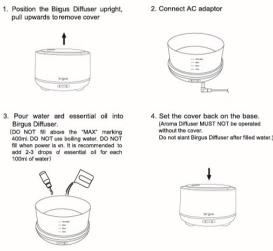
DIFFUSER & ACCESSORIES



This Aroma Diffuser uses Ultrasonic Technology to atomize the water and essential oils in the water tank, and produces a cool, humid and fragrant mist.



OPERATION



MAINTENANCE

After using 5-6 times, or 3-5 days, please clean the product as follow:
1. Unplug the unit and remove cover.
2. Pour out any remaining water from the tank.
3. Use a small amount of dish soap to clean. Gently wipe with a soft cloth. Use a dry towel to dry the diffuser after it is clean.
4. NEVER use other acids or enzymes to clean the unit as they could react with the essential oil residue and cause harmful vapors to be released or cause a malfunction.



PRECAUTIONS

- Please read better to avoid any malfunction to the unit:
- If you are not a technician do not try to disassemble the diffuser to repair it.
 - Do not turn power on when the tank is empty.
 - Do not touch the atomization plate.
 - Clean regularly as per Maintenance instructions to avoid malfunction.
 - Always unplug before maintenance.
 - For hygiene reasons, after use, pour out the remaining water from the tank and wipe with a clean dry cloth.
 - Only use the measuring cup to add water into the tank, do not fill water directly from the sink.
 - Do not let mist come in direct contact with furniture, clothing, walls, etc.
 - Keep out of direct sunlight.
 - Always keep on a hard, stable, flat surface. Do not place on a towel, carpet or any other unstable surface.
 - Keep away from electronic equipment, such as TV and Audio equipment.
 - Wait 60 minutes between uses to avoid damage to the atomization piece.
 - Do not use sparkling water. Only use tap water or mineral water.
 - Never move product when it is working.
 - Do not touch any part of the product with wet hands.
 - Keep away from pets and small children.
 - If the power cord is smoking or burning, unplug immediately!

TROUBLESHOOTING

If product doesn't work well, please refer to the following points before requesting repairs:	
Will not switch on or switch off	<ul style="list-style-type: none">• Is there enough water in the tank?<ul style="list-style-type: none">→ Please add water to the tank.• Is the power cord connected properly?<ul style="list-style-type: none">→ Please disconnect, check cables and re-connect carefully.
No mist or abnormal mist	<ul style="list-style-type: none">• Not enough water? or too much water?<ul style="list-style-type: none">→ Please add suitable amount of water in the tank, water must never be filled over 400ML (MAX) line.• Dirt or dust in the air intake on the underside of the base?<ul style="list-style-type: none">→ There is a fan on the underside of the base that is required to blow the mist out. If it gets clogged with dust or oil, it will prevent mist from coming out.
Water leakage from product	<ul style="list-style-type: none">• Cover not set on the base properly?<ul style="list-style-type: none">→ Remove the cover and set it back on the base right above the buttons.• Low temperature or high humidity?<ul style="list-style-type: none">→ Under these conditions, the mist may condense quickly into water droplets.

SPECIFICATIONS

Dimensions	(D)150mm x (H)100mm
Weight(remote control, adaptor and measuring cup included)	Approx 512g
Power Input/Output	AC100-240V 50/60Hz, DC34V 500mA
Length of cord	Approx 180CM
Tank Capacity	400ML
Material	PP/ABS
Accessory	Remote control, AC Adapter, measuring cup, and User manual

This device complies with Part 15 of the FCC Rules. Operation is subject to the following two conditions: (1) this device may not cause harmful interference, and (2) this device must accept any interference received, including interference that may cause undesired operation

NOTE: This equipment has been tested and found to comply with the limits for a Class B digital device, pursuant to Part 15 of the FCC Rules. These limits are designed to provide reasonable protection against harmful interference in a residential installation. This equipment generates, uses and can radiate radio frequency energy and, if not installed and used in accordance with the instructions, may cause harmful interference to radio communications. However, there is no guarantee that interference will not occur in a particular installation. If this equipment does cause harmful interference to radio or television reception, which can be determined by turning the equipment off and on, the user is encouraged to try to correct the interference by one or more of the following measures:

- Reorient or relocate the receiving antenna.
- Increase the separation between the equipment and receiver.
- Connect the equipment into an outlet on a circuit different from that to which the receiver is connected.
- Consult the dealer or an experienced radio/TV technician for help.

Warning: changes or modifications not expressly approved by the party responsible for compliance could void the user's authority to operate the equipment

The device has been evaluated to meet general RF exposure requirement, the device can be used in portable exposure condition with restriction