

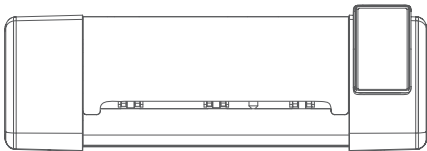
MONSTER MOE

## 智能膜切机产品手册

User Manual

FCC ID: 2AWT3-MOE1

产品清单



智能膜切机主机



刀头



刀针



适配器



电源线



刮板



擦机布



清洁剂

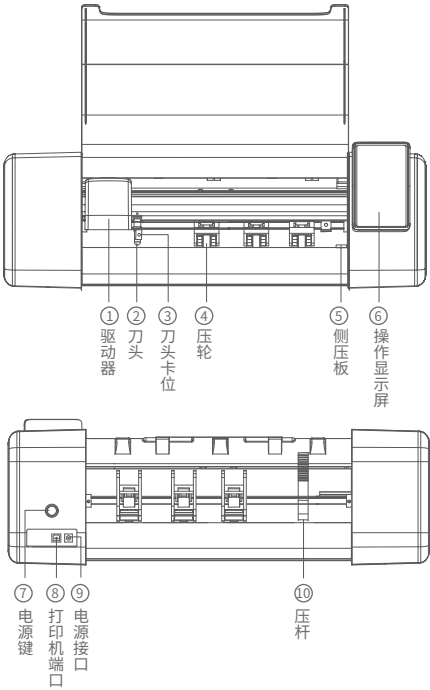


膜

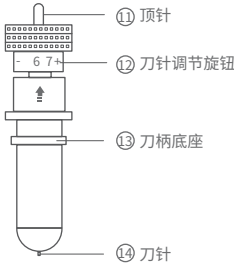
产品参数

控制面板:	6英寸彩色液晶电容屏
网络接入:	802.11n Wireless LAN
输入:	24V 2A DC
功率:	48W
尺寸:	520*220*210mm
净重:	6.4kg

外观及功能



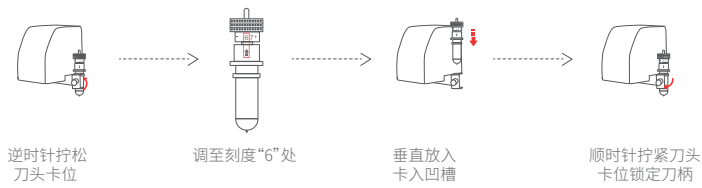
- ① 驱动器 控制刀头横向运动
- ② 刀头 切割保护膜 (详见图11.12.13.14)
- ③ 刀头卡位 锁定刀柄以固定刀头
- ④ 压轮 固定保护膜
- ⑤ 侧板 辅助限位保护膜摆放位置和运动方向
- ⑥ 操作显示屏 触摸以控制设备工作
- ⑦ 电源键 启动设备
- ⑧ 打印机端口
- ⑨ 链接电源 链接电源
- ⑩ 压杆 按压以控制压轮升降
- ⑪ 顶针 更换刀针
- ⑫ 刀针调节旋钮 旋转旋钮控制刀针的长度
- ⑬ 刀柄底座 与刀头卡位固定
- ⑭ 刀针 切割保护膜



注 意	
调节刀针	旋转旋钮 (12) 控制刀针的长度“+”符号方向可以调节刀针,“-”符号方式为缩短刀针。
更换刀针	按下顶针 (11) 取出需要更换的刀针 (14) 放入新的刀针。(内置磁铁, 可吸附固定刀针)。

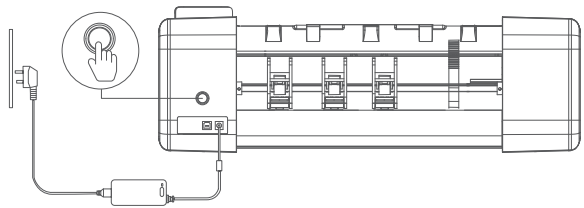
# 使用说明

## 一、安装膜切刀头



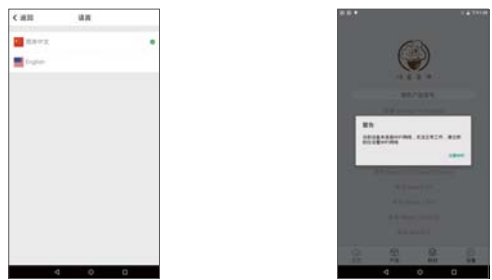
## 二、电源连接/开机

将电源线和适配器连接，电源线一端接入电源插座，为保证设备的正常运行，请使用100-240伏特交流电源；将适配器线一端接入膜切机电源接口；将刀头安装至驱动器旁的刀架卡位上，确保固定。连接完毕后，按下（电源键），启动设备。



## 三、切膜

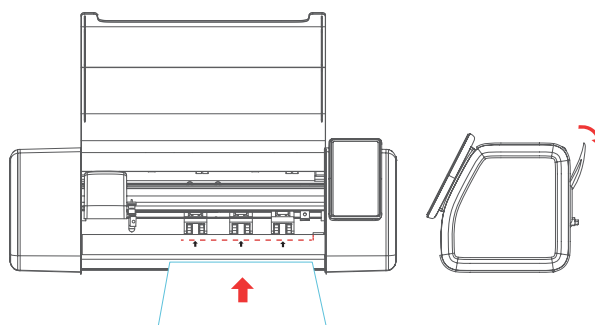
首次使用时，需点击【选择语言】完成语言设置;点击【设置WIFI】完成WIFI连接。



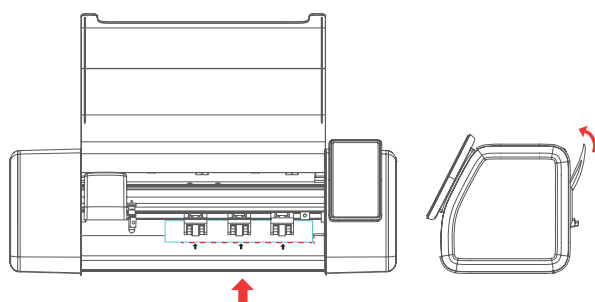
1、请如图所示：准备一张待裁切的保护膜。确认保护膜平整且膜层完备，无弯曲，折叠或缺层现象。



2、按下压杆，使压轮抬升，放置保护膜时，沿着进膜基准线放入。



3、缓慢抬起压杆，使压轮压紧保护膜。



4、系统正常启动后，进入主页。



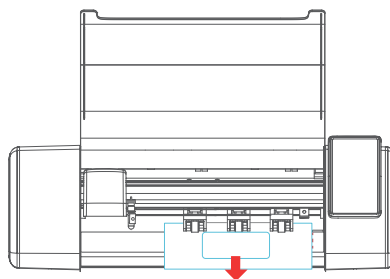
5、在搜索框输入关键词，搜索您需要切割的产品型号；  
选择相应的保护膜。



6、检查已正确放置保护膜后，点击【正确】，开始切割



7、膜切机切割完毕，保护膜会全自动退出。取出保护膜，完成裁切。



四、激活膜码

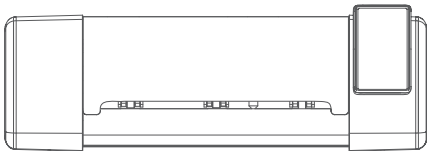
输入保护膜包装盒上面的【耗材验证码】，  
点击【确认添加】，添加完成。



注意事项

	不可用手指触摸刀尖。 此举会使手指受伤。
	机内不可渗入液体，掉入金属物件等。 这些物体会导致机器损坏。
	不可破坏或随意更换原配电源线，不可使电源线过度弯曲、强拉、捆绑及压在重物下。 此举会使电源受损，导致电击活火灾。
	如较长时间不使用设备，请把电源线从插座拔下来。否则会导致火灾。
	应把设备放在稳固的平面上。不然会使设备跌落，导致伤害。
	当把电源线从插座上拔下来，应拔插头，不应拉电缆。强拉电缆会导致电击或火灾。
	在雷雨闪电天气禁止使用。 以免雷电击坏机器。

## Packing List



The main machine



Tool bit



Needle



Adapter



Power cable



Scraper blade



Cloth



Clean spray



Protective film

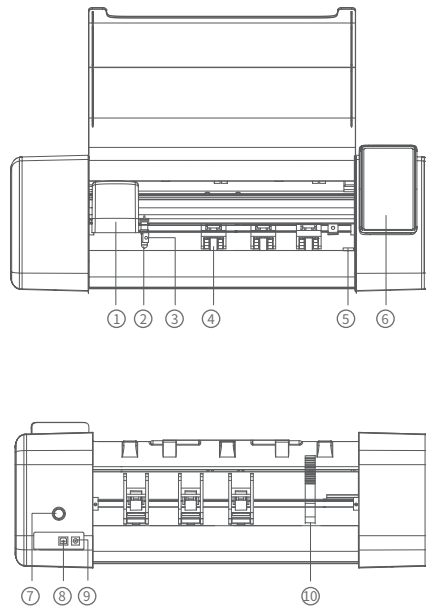
---

## Description

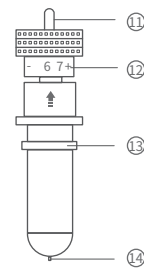
Control panel:	6" LCD Display
Network access:	802.11n Wireless LAN
Input:	24V 2A DC
KW:	48W
Size:	520*220*210mm
Net weight:	6.4kg



## Appearance and function



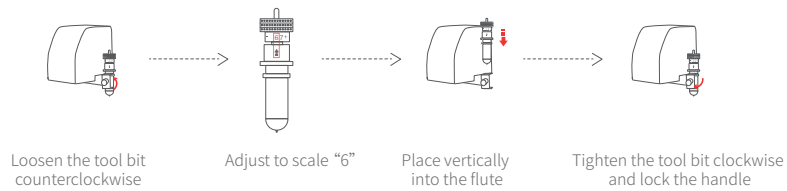
- |                                |  |
|--------------------------------|--|
| ① Driver                       | Control the lateral movement of the tool bit                     |
| ② Tool bit                     | Cut the protective film (See fig.11, 12, 13, 14)                 |
| ③ The fixation of the tool bit | Lock the hilt to fix the head bit                                |
| ④ Roller                       | Fix the protective film  |
| ⑤ Side panel                   | Position and direction of the auxiliary limiting protection film |
| ⑥ Operation display            | Touch to control device operation                                |
| ⑦ Power switch                 | Start the device   |
| ⑧ Printer port                 |  |
| ⑨ Power interface              | Connect to the power   |
| ⑩ Pressure lever               | Control the lifting of the roller                                |
| ⑪ Thimble                      | Change the needle  |
| ⑫ Adjusting knob of needle     | Turn the knob to control the length of the needle                |
| ⑬ The base of hilt             | Fix to the fixation of the tool bit                              |
| ⑭ Needle                       | Cut the protective film  |



Notice		
Adjust the needle	Turn the knob (12) to control the length of needle. The symbol "+" is used to extend the needle and "-" is used to shorten the needle.	
Replace the needle	Press the thimble (11) , remove the needle (14) and put the new one. (Inside there is a magnet that holds the needle in place)	

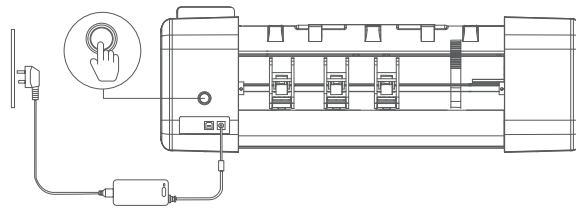
## Instructions

### 1.Install the tool bit



### 2.Power connection and start the machine

Connect the power cable to the adapter , Use the 100-240V AC power supply to ensure the normal operation of the equipment. Install the tool bit to the tool holder next to the driver. Make sure it is fixed. After the connection is completed, press (power button) to start the device.



### 3.Film cutting

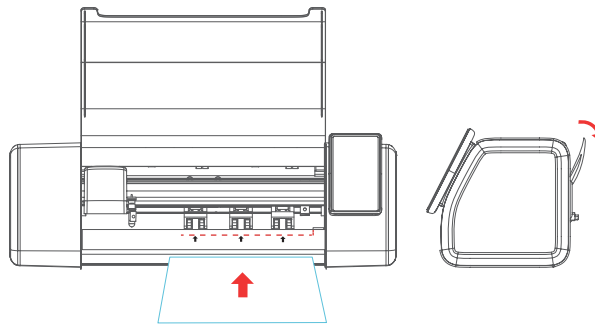
When using it for the first time, click to select language to complete the language setting. Click WiFi setting to complete the WiFi connection.



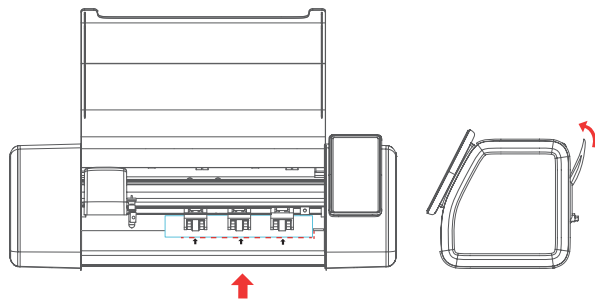
a.As shown in the picture: Prepare a protective film for cutting. Make sure that the protective film is smooth and complete without bending, folding or lacking layer.



b.Press the pressure lever, lift the roller, and place the protective film on the dotted line.



c.Lift up the pressure lever slowly and make sure that the roller has compressed the protective film.



d. Enter the homepage when the system starts.



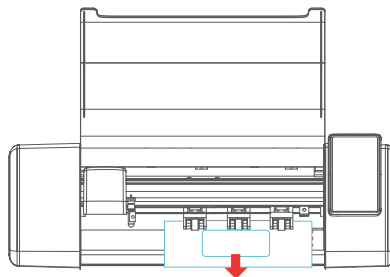
e. Input the key words in the search box to search for the model of product you want to cut; choose the corresponding protective film.



f. After checking the protective film has been placed properly, click the button OK to start cutting.



g. When the machine finishes cutting, the protective film will exit automatically. Remove the protective film and finish the film cutting.


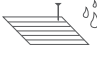




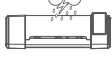


4.Activation code

Input the Consumable Verification Code above the packaging box of protective film and click Confirm to Add to complete the addition.



Notice

	Do not touch the tool nose with your fingers. It may injure you fingers.
	Do not infiltrate liquid or metal objects, etc into the machine. It may cause damage.
	Do not destroy or replace the original power cable at will. Do not make the power cable bend, strain, bind or press it under heavy objects. It may damage the power supply and cause an electric fire.
	If the equipment isn't used for a long time, please unplug the power connection.It may cause fire.
	The equipment should be placed on a solid surface. Or the device may fall and cause damage.
	When unplugging the power cable, please pull the plug rather than the cable. It may cause electrical shock or fire.
	Do not use in thunderstorms and lightning. Avoid damaging the machine by lightning.

## FCC Statement

This equipment has been tested and found to comply with the limits for a Class B digital device, pursuant to Part 15 of the FCC Rules. These limits are designed to provide reasonable protection against harmful interference in a residential installation. This equipment generates uses and can radiate radio frequency energy and, if not installed and used in accordance with the instructions, may cause harmful interference to radio communications. However, there is no guarantee that interference will not occur in a particular installation. If this equipment does cause harmful interference to radio or television reception, which can be determined by turning the equipment off and on, the user is encouraged to try to correct the interference by one or more of the following measures:

- Reorient or relocate the receiving antenna.
- Increase the separation between the equipment and receiver.
- Connect the equipment into an outlet on a circuit different from that to which the receiver is connected.
- Consult the dealer or an experienced radio/TV technician for help.

This device complies with part 15 of the FCC Rules. Operation is subject to the following two conditions:

(1) This device may not cause harmful interference, and (2) this device must accept any interference received, including interference that may cause undesired operation.

Changes or modifications not expressly approved by the party responsible for compliance could void the user's authority to operate the equipment.

## FCC Radiation Exposure Statement

The antennas used for this transmitter must be installed to provide a separation distance of at least 20 cm from all persons and must not be co-located for operating in conjunction with any other antenna or transmitter.