

## Audax Body Worn Video System

### 20-1 Chest Camera - User Guide



#### 1. System Components

The system is supplied in a soft case complete with the following:

- A. Chest Camera
- B. Internal (non-removable) 32Gb Solid State memory (64Gb and 128Gb optional)
- C. USB 2.0 cable
- D. Wall Socket USB Charger
- E. 360° crocodile clip
- F. Dock / KlickFast type connector



#### 2. System Features

- Full HD video recording
- Solid State memory
- Still image capture
- Audio
- IR (Auto or Manual)
- GPS
- 140° Wide Angle Lens
- Secure, password protected files
- IP67



### 3. NOTES / WARNINGS

**Charging Battery** – Prior to first use of the system, charge the battery for a minimum of four hours. When the battery is fully charged, the Red “POWER” LED on the top of the device will turn OFF. Please note that your camera may arrive already fully charged, so don't be surprised if, the first time you try to charge it, the red “charging” light does not come on.

**Connection to PC** – The Camera **DOES NOT** allow direct connection to a PC for downloading of data. The **ONLY** way this can be achieved is by using the CamManager software (**Please note that this process is different if using the Audax Docking Station**).

**Changing Settings** – We recommend that all recorded video / image files are backed up before changing any system settings. Failure to do so may cause recorded footage/files to be deleted.

**Internal Memory** – Gaining or attempting to gain physical access to the Internal Memory will invalidate the system Warranty.

**Cables** – Only ever use the supplied chargers and cables. Using other “similar” cables may invalidate the system Warranty.

**Password Protection** – The Chest Camera device has two different Passwords set:  
**a.** The “Settings” Menu has the initial password set as **000000** (Please see Section 6, para Q for details of how to set Passwords).

The software will not allow access to settings and downloading without using this password. Audax recommend that this Password is re-set and safely recorded at the earliest opportunity.

**b.** The “Replay” Menu has the initial password set as **000001** (Please see Section 6, para R for details of how to set Passwords).

This allows that you can give this password to the user so that they can view recorded footage (if you require). However, they will NOT be able to access other areas (settings / downloading) with this password. Audax recommend that this Password is re-set and safely recorded at the earliest opportunity.

**IMPORTANT NOTE:** If, after setting, your password is lost then the device will have to be returned to be re-set. In that event, a fee will be chargeable and any footage held on the unit might be erased as part of the re-setting process.

**Screen Protectors** – The Chest Camera device may be dispatched with a protective film covering the camera lens (front) and viewing screen (back). Please ensure that the film is peeled off before using.

## 4. Views

### Top

- a. Power (Left) – RED LED shows the device is charging  
GREEN LED shows the device is ON
- b. Work – RED LED (flashing) shows the device is Recording Video. This LED will show AMBER (flashing) when recording Audio Only.



### Front

- a. Top left – White light filter  
Top right – IR Sensor  
Centre – Camera lens  
Bottom Left/Right – IR Illuminators -
- b. Record (Video) button



### Left

- c. USB connection
- d. Audio only button
- e. Manual IR button



### Right

- a. SOS button (Live Streaming ONLY)
- b. Camera (still image) button
- c. Power “on / off” button



### Rear

- a. 360° detachable clip
- b. Display Screen
- c. (1) “Menu” / “OK” button
- d. (2) “Up” button
- e. (3) “Down” button
- f. (4) “Back” / “Replay” button



1 2 3 4

## **5. General System Operation (please refer to buttons listed above)**

### **a. Power On/ Off**

1. Press the POWER ON / OFF button for 1 second; the camera will turn on and enter the standby mode (the device will vibrate).

**IMPORTANT NOTE: Please also see section 6 para S regarding the “LCD auto off” function and para T regarding the “Auto shutdown” function.**

When the device is ON, pressing the POWER button for 1 second will turn the device OFF

### **b. Video Recording**

1. Once turned on, the device will automatically enter the camera preview mode and a live picture will be shown on the display screen. Press the RECORD button to commence recording; the device may vibrate and the “work” LED on the top will change to RED (flashing). A RED circle will also show on the display screen.

2. Press the RECORD button again to stop recording; the device may vibrate and the “work” RED LED will turn off. At this point, recording will stop (unless Post-event recording has been selected) and the video will be saved.

3. If recording is required in “low light” conditions, press the IR button (unless IR “Auto” has been previously selected). The IR illuminators will be turned on and the device will enter the night shooting mode.

**IMPORTANT NOTE: Video recorded when IR has been selected will be in black and white only.**

### **c. Still Images**

1. Once turned on, the device will automatically enter the camera preview mode. Press the PHOTO button to take still images.

2. As already mentioned in b.3. above; if photos are to be taken in “low light” conditions, turn on the IR illuminators (unless IR “Auto” has been previously selected).

**IMPORTANT NOTE: Still images taken when IR has been selected will be in black and white only.**

3. When recording Video, the PHOTO button can be pressed to capture a picture while still recording at that time.

### **d. Audio recording**

1. Once turned on, the camera will automatically enter the camera preview mode. Press the AUDIO button to record audio ONLY. The device will vibrate and the “work” LED on the top will change to **AMBER** (flashing).

2. Press the AUDIO button again to end audio recording, and the audio file will be automatically saved.

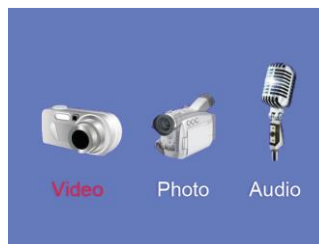
### e. Video Playback

The device has been designed and manufactured with a one-touch playback button and quick playback button.

When in the “standby” state, press the PLAYBACK button to enter the playback menu.

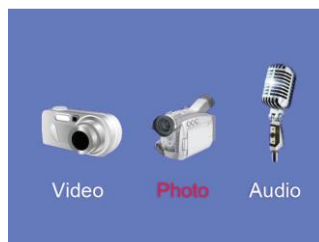
**IMPORTANT NOTE: Playback of video, still images and audio only recordings are only available once the correct 6 digit Password has been entered.**

1. When in the “playback” state, press “OK” to select the Video playback option and press the UP or DOWN button to select the video you want to play.
2. Press the OK button to play the video file. Pressing the OK button while the file is playing, will pause playback. Press OK again to continue.



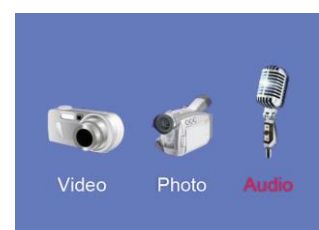
### f. Still Image playback

1. When in the “playback” state, select the Photo playback option and press the UP or DOWN button to select the image you want to view.
2. Press the OK button to view the picture. Pressing the UP/DOWN buttons will cycle photos.
3. When choosing the slideshow mode to view pictures, they will be played in cycle under the slideshow mode.



### g. Audio Playback

1. When in the “playback” state, select the audio play back option and press the UP or DOWN button to select the audio file you want to hear.
2. Press the OK button to play the audio.



## h. Optional Components

A Single Charging Dock is available as an optional component (at extra cost).



This Single Dock can be connected to a PC using the USB Cable supplied with the Camera.

**IMPORTANT NOTE:** Please note that the Single Dock is only used for Charging the camera and cannot be used for downloading data.

## 6. System Settings

Press the MENU button to go to the “SETUP” screen in order to change parameter settings.

Please note that the “Settings Menu” is password protected and can only be accessed when the correct password is entered on the Camera. Therefore, only the person / people who know the password can change the Settings.

### a. Resolution

Select RESOLUTION (will be highlighted in RED) and select OK. This gives you the option to change the resolution settings.



There are six options to select from (all at 30fps):

2560 x 1440 30fps 16:9	2304 x 1296 30fps 16:9
1920 x 1440 30fps 4:3	1920 x 1080 30fps 16:9
1280 x 720 30fps 16:9	848 x 480 30fps 16:9

Press “Up” or “Down” to select the required resolution and press “OK” to confirm. Press “Back” to return to standby.

### b. Video quality

Select VIDEO QUALITY (will be highlighted in RED) and select OK. This gives you the option to change the video quality (bitrate) in the following settings:



There are three options to select from: Normal, Fine and S. Fine. This gives different settings dependent on the Resolution set.

2560 x 1440 – 30	18.0Mbps Normal	14.0Mbps Fine	9.0Mbps S. Fine
2304 x 1296 – 30	15.0Mbps Normal	12.0Mbps Fine	8.0Mbps S. Fine
1920 x 1440 – 30	15.0Mbps Normal	12.0Mbps Fine	8.0Mbps S. Fine
1920 x 1080 – 60	12.0Mbps Normal	10.0Mbps Fine	8.0Mbps S. Fine
1280 x 720 – 30	8.0Mbps Normal	6.0Mbps Fine	4.0Mbps S. Fine
848x 480 – 30	5.0Mbps Normal	4.0Mbps Fine	3.0Mbps S. Fine

Press “Up” or “Down” to select the required setting and press “OK” to confirm. Press “Back” to return to standby.

### c. Pre Event Recording

Select PRE\_RECORD (will be highlighted in RED) and select OK. This gives you the option to select Pre-Event Recording.



There are two options to select from:

Off – No pre-event recording

On – the camera will pre-record for approximately 29 seconds (at 1280 x720) prior to the pressing of the “Record” button (the actual pre-record time will depend on the resolution set e.g. 1280 x 720 resolution will give 29 seconds, lower resolutions will give more time but higher resolutions will give less time).

Press “Up” or “Down” to select the required option and press “OK” to confirm.

Press “Back” to return to standby.

### d. Post Event Recording

Select POST\_RECORD (will be highlighted in RED) and select OK. This gives you the option to select Post Event Recording.



There are six options to select from:

Off – No post event recording

10, 20, 30 seconds, 1 minute and 5 minutes – The camera will continue to record for the selected duration AFTER pressing the “stop recording” button.

Press “Up” or “Down” to select the required option and press “OK” to confirm.

Press “Back” to return to standby.

**IMPORTANT NOTE:** When POST\_RECORDING has been set, the device will continue to record, after the “stop recording” button has been pressed, until the time period (e.g. 20 seconds) has been reached. The Red recording LED will remain on during this period.



#### e. Video Duration

Select DURATION (will be highlighted in RED) and select OK. This gives you the option to change the video file duration times.



There are five time intervals to select from:

Off (continuous recording) / 5 / 10 / 15 / 30 minutes

Press “Up” or “Down” to select the required resolution and press “OK” to confirm. Press “Back” to return to standby.

#### f. Dewarp

Select DEWARP (will be highlighted in RED) and select OK. This gives you the option to reduce the “fish eye” effect on video.



There are two options to select from: On or Off

Press “Up” or “Down” to select the required resolution and press “OK” to confirm. Press “Back” to return to standby.

#### g. Video Encoding

Select VIDEO ENCODING (will be highlighted in RED) and select OK. This gives you the option to change the compression rate.



There are two options to select from: H.264 and H.265

Press “Up” or “Down” to select the required resolution and press “OK” to confirm. Press “Back” to return to standby.

#### h. EIS (Electronic Image Stabilisation)

Select EIS (will be highlighted in RED) and select OK. This gives you the option to increase the stability of the video (when the wearer is running for example).



There are two settings to select from: On and Off

Press “Up” or “Down” to select the required resolution and press “OK” to confirm. Press “Back” to return to standby.

#### i. Motion detection

Select MOTION DETECTION (will be highlighted in RED) and select OK. This gives you the option for the Camera to detect and record when motion is seen by the camera lens.



There are four settings to select from: Off, Low, Medium and High

Press “Up” or “Down” to select the required resolution and press “OK” to confirm. Press “Back” to return to standby.

**NOTE:** Once the setting for Motion detection has been changed (Low, Medium, High), the “Record” button **MUST** be pressed to activate Motion detection.

The individual settings record video according to the change degree of the screen area (Low, Medium or High). When the camera detects movement, it will start recording and continue to record while movement is seen. If movement stops, recording will continue for a further 18 seconds and then stop until the next movement is seen

#### i. Photo Size

Select PHOTO SIZE (will be highlighted in RED) and select OK. This gives you the option to change the photo resolution sizes.



There are seven settings to select from:

2 / 3 / 5 / 8 / 12 / 16 / 30 Megapixels

Press “Up” or “Down” to select the required resolution and press “OK” to confirm. Press “Back” to return to standby.

### **k. Photo quality**

Select PHOTO QUALITY (will be highlighted in RED) and select OK. This gives you the option to change the still image quality (bitrate).



There are three options to select from: Normal, Fine and S. Fine. This gives different settings dependent on the "Photo Size" resolution set.

The compression ratio between S.Fine and Fine is 66%

The compression ratio between Fine and Normal is 66%

The compression ratio between S.Fine and normal is 43%

Press "Up" or "Down" to select the required resolution and press "OK" to confirm. Press "Back" to return to standby.

### **l. Photo burst**

Select PHOTO BURST (will be highlighted in RED) and select OK. This gives you the option to change the continuous photo shooting in a sequence.



There are six options to select from:

Off – no continuous photo shooting (a single photo will be captured)

5 – Five photos taken with one press of the Capture button

10 – Ten photos taken with one press of the Capture button

15 – Fifteen photos taken with one press of the Capture button

20 – Twenty photos taken with one press of the Capture button

25 – Twenty Five photos taken with one press of the Capture button

Press "Up" or "Down" to select the required option and press "OK" to confirm. Press "Back" to return to standby.

### m. Self Timer

Select SELF TIMER (will be highlighted in RED) and select OK. This gives you the option to set a time delay when taking still images.



There are six options to select from:

- Off – no delay. A still image will be taken on press of the PHOTO button
- 3 – A three second delay will take place after pressing the PHOTO button
- 5 – A five second delay will take place after pressing the PHOTO button
- 10 – A ten second delay will take place after pressing the PHOTO button
- 30 – A thirty second delay will take place after pressing the PHOTO button
- 60 – A sixty second delay will take place after pressing the PHOTO button

Press “Up” or “Down” to select the required option and press “OK” to confirm. Press “Back” to return to standby.

### n. Auto shooting

Select AUTO SHOOTING (will be highlighted in RED) and select OK. This gives you the option for continuous photographs to be taken every x seconds (dependent on settings below).



There are six options to select from:

- Off – no automatic photo taking
- 3 – A three second delay will take place after pressing the PHOTO button
- 5 – A five second delay will take place after pressing the PHOTO button
- 10 – A ten second delay will take place after pressing the PHOTO button
- 30 – A thirty second delay will take place after pressing the PHOTO button
- 60 – A sixty second delay will take place after pressing the PHOTO button

**NOTE:** If an Auto Shooting time has been selected and commenced, it can be stopped by pressing the Camera button.

Press “Up” or “Down” to select the required option and press “OK” to confirm.

Press “Back” to return to standby.

#### **o. LCD brightness**

Select LCD BRIGHTNESS (will be highlighted in RED) and select OK. This gives you the option to select the brightness of the screen.



There are three options to select from: High / Medium / Low

Press "Up" or "Down" to select the required option and press "OK" to confirm.  
Press "Back" to return to standby.

#### **p. Speaker Volume**

Select SPEAKER VOLUME (will be highlighted in RED) and select OK. This gives you the option to change the volume of the audio on the device.

**IMPORTANT NOTE: This setting has NO effect on the sensitivity of the audio recording Microphone e.g. even if this is set to OFF, audio will still be recorded.**



There are four options to select from: Off / Low / Medium / High

Press "Up" or "Down" to select the required option and press "OK" to confirm.  
Press "Back" to return to standby.

#### **q. Password**

Select PASSWORD (will be highlighted in RED) and select OK. This gives you the option to change the password for the "**Settings Menu**".

The DEFAULT Password is set as **000000**.



Press "Up" or "Down" to select the required setting (0 to 9) and press "OK" to confirm each setting.

Press "Back" to return to standby.

#### r. PB password

Select PB\_PASSWORD (will be highlighted in RED) and select OK. This gives you the option to change the “Replay” password.

The DEFAULT Password is set as **000001**



Press “Up” or “Down” to select the required setting (0 to 9) and press “OK” to confirm each setting.

Press “Back” to return to standby.

#### s. Light Sensitive

Select LIGHT SENSITIVE (will be highlighted in RED) and select OK. This option gives a clearer picture in dark conditions when IR is used.



There are three options to select from: High, Medium or Low

**IMPORTANT NOTE: This option only has any value when the Infrared Switch (R (below)) is set to “Auto”**

Press “Up” or “Down” to select the required option and press “OK” to confirm.

Press “Back” to return to standby.

#### t. IR distance

Select IR DISTANCE (will be highlighted in RED) and select OK. This gives you the option to select the distance for use of the IR Illuminators.



There are three options to select from:

Near (+/- 5m)

Medium (+/- 10m)

Far (+/- 15m)

Press “Up” or “Down” to select the required option and press “OK” to confirm.

Press “Back” to return to standby.

#### u. Infrared Switch

Select INFRARED SWITCH (will be highlighted in RED) and select OK. This gives you the option to select the use of the IR Illuminators.



There are two options to select from: Manual / Auto

Press “Up” or “Down” to select the required option and press “OK” to confirm.

Press “Back” to return to standby.

**NOTE:** If Manual IR is set, the user will be required to press the IR button on the camera to activate the IR illuminators.

#### v. LCD Auto Off

Select LCD AUTO OFF (will be highlighted in RED) and select OK. This gives you the option to power off the LCD Screen (screensaver) after a certain period of time (unless any other operation is selected).

**NOTE:** Having the LCD Screen on continuously will use more battery power.



There are five options to select from:

- Off – the LCD Screen will NOT automatically be turned off
- 30 secs – the LCD Screen will turn off after 30 seconds
- 1 min – the LCD Screen will turn off after 1 minute
- 3 mins – the LCD Screen will turn off after 3 minutes
- 5 mins – the LCD Screen will turn off after 5 minutes

Press “Up” or “Down” to select the required option and press “OK” to confirm.

Press “Back” to return to standby.

#### w. Auto shutdown

Select AUTO SHUTDOWN (will be highlighted in RED) and select OK. This gives you the option to **completely power off** the camera off after a certain period (unless any other operation / button is selected).

**NOTE:** this is different to the “LCD Auto off” settings given in para V above.



There are four options to select from:

Off – the camera will **NOT** automatically be turned off

**This is the RECOMMENDED SETTING for all users**

3 – the camera will be turned off after 3 minutes

5 – the camera will be turned off after 5 minutes

10 – the camera will be turned off after 10 minutes

Press “Up” or “Down” to select the required option and press “OK” to confirm.

Press “Back” to return to standby.

#### x. Slideshow

Select SLIDESHOW (will be highlighted in RED) and select OK. This gives you the option to select a Slideshow of all the still images stored on the Camera. Each image will stay on-screen for approximately 5 seconds before moving to the next image.



There are two options to select from: On or Off

Press “Up” or “Down” to select the required option and press “OK” to confirm.

Press “Back” to return to standby.

#### y. Motor

Select MOTOR (will be highlighted in RED) and select OK. This allows the camera to vibrate when certain actions are carried out such as record start, record stop.



There are two options to select from: On or Off

Press “Up” or “Down” to select the required option and press “OK” to confirm.

Press “Back” to return to standby.



#### **z. Key tone**

Select KEY TONE (will be highlighted in RED) and select OK. This gives you the option to enable or disable the audible key tone sound on the device.



There are two options to select from: On or Off

Press “Up” or “Down” to select the required option and press “OK” to confirm.

Press “Back” to return to standby.

#### **aa. Indicator light**

Select INDICATOR LIGHT (will be highlighted in RED) and select OK. This gives you the option to enable or disable the LED Indicators on the top of the Camera.



There are two options to select from: On or Off

Press “Up” or “Down” to select the required option and press “OK” to confirm.

Press “Back” to return to standby.

#### **ab. Loop record**

Select LOOP RECORD (will be highlighted in RED) and select OK. This gives you the option to either overwrite old video files stored on the camera or to have the camera stop recording when the Memory is full.



There are two options to select from:

- Off – disables the overwriting function
- On – enables the overwriting function

Press “Up” or “Down” to select the required option and press “OK” to confirm.

Press “Back” to return to standby.

#### ac. Cardv

Select CARDV (Car DV) (will be highlighted in RED) and select OK. This gives you the option to use the Camera in a vehicle. If selected "ON", when the Camera is connected to a 12v supply in vehicle, the Camera will turn on and start recording when the vehicle ignition is turned on. The Camera will stop recording and turn off when the vehicle ignition is turned off.

**IMPORTANT NOTE:** This setting is very much dependent on the vehicle and whether the USB/12v connections remain powered even if the vehicle ignition is turned off.

This setting is based on the fact that power to the USB/12v connections is disabled when the vehicle ignition is turned off



There are two options to select from: On or Off

Press "Up" or "Down" to select the required option and press "OK" to confirm.

Press "Back" to return to standby.

#### ad. WiFi

Select WIFI (will be highlighted in RED) and select OK. This gives you the option to connect to a Wi-Fi Network for Live Streaming.



There are two options to select from: On or Off

Press "Up" or "Down" to select the required option and press "OK" to confirm.

Press "Back" to return to standby.

#### **ae. WiFi SSID**

Select WIFI SSID (will be highlighted in RED) and select OK. This allows you to input the SSID (**S**ervice **S**et **I**dentifier (Network Name)), using the keypad shown.

Setup	
WiFi SSID	SSID Name

Press the following buttons to move around the keypad:

Audio Record	Up
Manual IR	Down
“Up” arrow	Left
“Down” arrow	Right

After entering the correct SSID, select the “Enter” key (bottom right of keypad) to finish.

#### **af. WiFi Password**

Select WIFI PASSWORD (will be highlighted in RED) and select OK. This allows you to input the Password for the SSID selected, using the keypad shown. This is the same procedure as for para **ae** above

Setup	
WiFi password	* * * * *

Press the buttons to move around the keypad as shown in **ae** above

After entering the correct WiFi Password, select the “Enter” key (bottom right of keypad) to finish.

#### **ag. Server IP**

Select SERVER IP (will be highlighted in RED) and select OK. This allows you to input the IP address of the Server being used for live Streaming, (such as the Audax Server), using the keypad shown. This is the same procedure as for paras **ae** and **af** above

Setup	
Server IP	192.168.242.69

Press the buttons to move around the keypad as shown in **ae** above

After entering the correct Server IP, select the “Enter” key (bottom right of keypad) to finish.

#### ah. Server port

Select SERVER PORT (will be highlighted in RED) and select OK. This allows you to input the correct Port Number of the Server being used for live Streaming, (such as the Audax Server), using the keypad shown. This is the same procedure as for paras **ae - ag** above

Setup	
Server port	6608

Press the buttons to move around the keypad as shown in **ae** above

After entering the correct Server Port, select the “Enter” key (bottom right of keypad) to finish.

#### ai. Network ID

The NETWORK ID allows that the Camera will be recognised by the Server when Live Streaming.

Setup	
Network ID	NetworkID

This setting is fixed and CANNOT be changed.

#### aj. Second resolution (Network quality)

Select SECOND RESOLUTION (will be highlighted in RED) and select OK. This allows you to select the Resolution (Network Quality) for Live Streaming.

**NOTE:** the higher the Second Resolution is set, the higher the data rate will be.

Setup	
Second resolution	720P

There are three options to select from:

1080P / 720P / 540P

Press “Up” or “Down” to select the required option and press “OK” to confirm.

Press “Back” to return to standby.

### ak. Default setting

Select DEFAULT SETTING (will be highlighted in RED) and select OK. This will give you the option to return the Camera back to its original default (factory) settings.

**IMPORTANT NOTE:** Resetting the camera to Default Setting **DOES NOT** delete any recorded footage.



Select the **o** icon to reset settings or select the **x** to cancel

Press “Up” or “Down” to select the required option (highlighted in blue) and press “enter” to confirm. The Camera will need to reboot on completion, so press the “enter” key once again to confirm.

### al. Format

Select FORMAT (will be highlighted in RED) and select OK. This will give you the option to completely Format the internal memory.

**IMPORTANT NOTE: FORMATTING WILL DELETE ALL RECORDED DATA ON THE CAMERA.**



Select the **o** icon to Format settings or select the **x** to cancel

Press “Up” or “Down” to select the required option (highlighted in blue) and press “enter” to confirm.

### am. Language

Select LANGUAGE (will be highlighted in RED) and select OK. This shows the current Language set on the device.

There are sixteen options to select from:

English / Chinese / French / Russian / Dutch / Greek / Spanish / Italian / Vietnamese / Polish / German / Portuguese / Romanian / Danish / Serbian / Finnish



Press “Up” or “Down” to select the required option and press “OK” to confirm. Press “Back” to return to standby.

#### **an. ID**

Select ID (will be highlighted in RED) and select OK. This gives you the option to set the ID number of the device and/or user.

Setup	
ID	00000 000000

The “Up” or “Down” buttons can now be used to select 0 to 9 or A to Z. Press “OK” to select and confirm each setting.

The first 00000 are for the User ID if used (the H2 cannot be changed)

The second 000000 are for the Unit ID if used

Once the final Letter / Number has been selected, you will automatically be returned to the settings menu.

#### **ao. Time zone**

Select TIME ZONE (will be highlighted in RED) and select OK. This gives you the option to set the date and time.

Setup	
Time zone	+1

Press the “Up or “Down” arrow buttons to decrease or increase the time zone to select the required position (e.g. 0 = Greenwich Mean Time), and press “enter” to confirm.

#### **ap. Time setting**

Select TIME SETTING (will be highlighted in RED) and select OK. This gives you the option to set the date and time.

Setup	
Time setting	2020-02-22 12:34

Press “Left” or “Right” to select the required position (year, month, day) and press “OK”.

Press the “Up” or “Down” buttons select the correct Year and press “enter” to confirm. Follow the same process for the Month, Day, Hour and Minute. Press “OK” to confirm each setting.

Once the Minute has been confirmed, you will automatically be returned to the settings menu.

### **aq. Version**

This shows the current Firmware Version on the device.

Setup	
Version	20200310

If new firmware updates are released, these can be emailed to you along with the instructions for installation.

**NOTE:** There is no option to alter this setting.

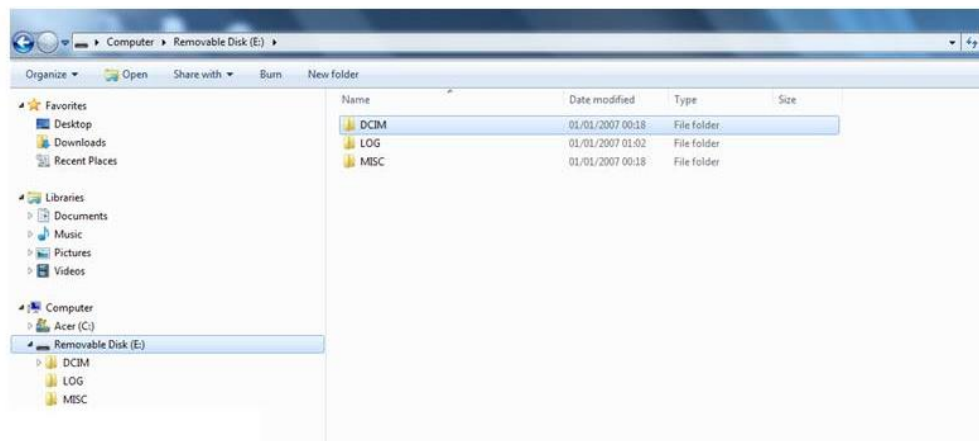
Press “Back” to return to standby.

## 7. Computer Connection Instructions

### NOTES:

- a. Only ever use the supplied USB cable when connecting the device to a Computer.
- b. No additional Drivers or Software are supplied for this device. The camera will work on Operating Systems such as Windows XP / 7 / 8 / 10 and any drivers needed should automatically be installed by Windows.

1. Connect the supplied USB Cable to the device and Computer
2. Turn on the device
3. Enter the correct Password (the computer will not detect the device until the password has been entered).
4. The device will show “Connected to PC” on the rear screen, and the device will appear as an external “Removable Disk” as per the diagram below:



5. All video, still images and audio files will appear in the DCIM folder. The LOG folder contains a basic “admin trail” of the device use. The MISC folder is not used and may not show.

6. Click to open one of the recordings and this will immediately start playing the recording in a movie application (e.g. VLC Media Player / Windows Media Player).

VLC Media Player is recommended for video files recorded on the Camera – a free download for this player can be found at: <http://www.videolan.org/vlc/>. Still images are stored as JPEG files and can be opened using media such as Windows Photo Viewer etc.

7. Removing the USB cable from the device, when connected to a PC, will automatically turn the device off.



## Warranty

This product is warranted product against defects in material or workmanship for 1 year from date of purchase.

This limited warranty shall not apply to any product or item subjected to misuse, including static discharge or over charge, failure by user to follow User Guide instructions, product modification, ordinary wear and tear, negligence or improper use/operation.

This limited warranty is also voided if the DVR is found to have an altered or tampered with serial number or if access or attempted access to the internal memory is suspected.

### FCC Warning Statement

This device complies with part 15 of the FCC rules. Operation is subject to the following two conditions (1) this device may not cause harmful interference, and (2) this device must accept any interference received, including interference that may cause undesired operation.

Changes or modifications not expressly approved by the party responsible for compliance could void the user's authority to operate the equipment.

This equipment has been tested and found to comply with the limits for a Class B digital device, pursuant to Part 15 of the FCC Rules. These limits are designed to provide reasonable protection against harmful interference in a residential installation. This equipment generates uses and can radiate radio frequency energy and, if not installed and used in accordance with the instructions, may cause harmful interference to radio communications. However, there is no guarantee that interference will not occur in a particular installation. If this equipment does cause harmful interference to radio or

television reception, which can be determined by turning the equipment off and on, the user is encouraged to try to correct the interference by one or more of the following measures:

- Reorient or relocate the receiving antenna.
- Increase the separation between the equipment and receiver.
- Connect the equipment into an outlet on a circuit different from that to which the receiver is connected.
- Consult the dealer or an experienced radio/TV technician for help.

Full details of our Terms and Conditions can be found on our website [www.audaxuk.com](http://www.audaxuk.com).

This Product is exclusively distributed Worldwide by Audax Global Solutions Ltd and all claims, questions and contact should be with Audax in the first instance

© Audax Global Solutions Ltd 2020

This document is not to be reproduced in part or in whole without the prior permission of Audax Global Solutions Ltd

**Audax Global Solutions Ltd**  
Plymouth, Devon PL1 3JY  
T: +44 (0)1752 264950  
E: [info@audaxuk.com](mailto:info@audaxuk.com)  
W: [www.audaxuk.com](http://www.audaxuk.com)