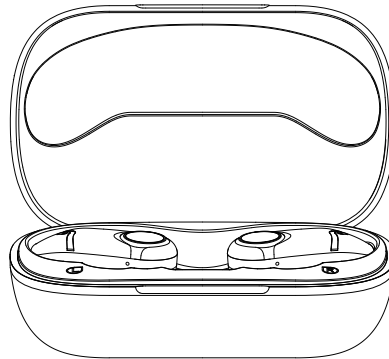


User Manual

A9 Wireless Earphones



Initial Usage



1. Opening the charging case will automatically turn on the earphones. The earphones quickly enter pairing mode.



2. Turn on your phone's Bluetooth and look for "A9" on the device list. Tap on it to start using the earphones.

Subsequent Usage



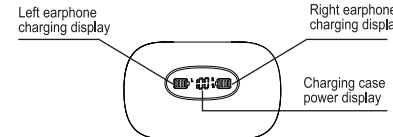
1. Auto-Disconnection
Put the earphones inside the charging case and close the case to enter the charging mode. Bluetooth will be automatically disconnected.
2. Auto-Reconnection
After the initial use, you can use the earbuds by simply opening the charging case. The earbuds will automatically reconnect to your phone, even before you take it out of the case.

Note: After opening the case, if the headset is not connected to a device, it will turn off after 5 minutes.

-1-

Operating the Charging Case

Before using the item for the first time, it is recommended to place the earphones inside the case and charge them until they reach full charge. The included USB Type-C cable should be used for charging.



Smart Charging

1. Charging for Earphones: Put the earphones inside the charging case and close the cover. They will automatically enter charging mode. While any of the earphones (L / R) is charging, the indicator light corresponding to the earphones flashes incrementally. At full charge, the indicator corresponding to the earphones shows full grid (four grids) flash for 5 seconds, then enter standby mode.
2. Charging for Case: After inserting the charging cable into the USB Type-C slot on the case, the case will automatically start getting charged. The LED screen will display an incremental change of power from 0 to 100 during charging. 100 indicates full charge.

Note: Please place the earphones into the charging case smoothly with gentle push. Prevent the earphones from being in poor contact with the charging probe, which may result in failure to charge.

-2-

Operating Buttons & Keys



Multi-function button
Tap Once: play/pause music, answer calls, hang-up, etc.



Side buttons, double-press: "+" to skip to next song
"-" to skip to previous song



Multi-function button double-press: reject call, enter Bluetooth pairing status,



Side buttons, long press: "+" for volume up
"-" for volume down



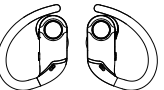
Multi-function button, long press 6 seconds to turn off; 3 seconds to turn on



Multi-function button triple-press: Activate Siri Voice Assistant

-3-

Clear phone pairing



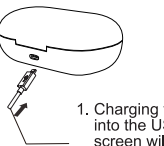
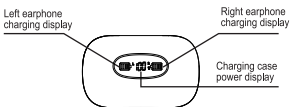
Press and hold the button "volume+" and "volume-" of both earphones for 8s simultaneously in power on state, the red and blue lights flash 3 times, then earbuds will be power off.

Low battery alert

The headphone will alert you when the battery level is low. Whenever the power is below 20%, it will give the following voice warning every 30 seconds. "Low battery, please charge".

Charging case indicator status

Charging process, power display.

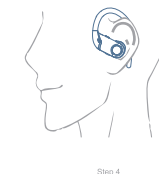
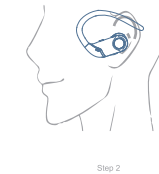
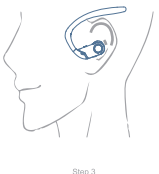
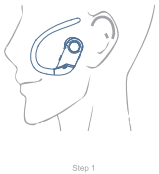


1. Charging the case: Insert the charging cable into the USB Type-C slot on the case. The LED screen will display an incremental change of power from 0 to 100 during charging. 100 indicates full charge.

-4-

Tip

Proper Way of Wearing the Earphones:



While using the earphones, for maximum comfort, please place them on and in your ears as shown above.



-5-

Specifications

Earphones

Bluetooth version: 5.3
Working Voltage: 3.0V-4.2V
RF transmit power: Class 2
Communication distance: 10M
Transmission range(Hz): 2.402-2.480GHz
Audio encoding format: AAC, SBC
Support: A2DP1.3, HFP1.7, HSP1.2, AVRCP1.6, SPP1.2
Working temperature: -15-60 degree celsius
Working humidity: 10%-85% (non-frozen state)

Single Earphone:

Weight: 0.02lb (9g)
Size: 1.9*1.6*1inch (4.7*4.1*2.8cm)
Battery capacity: 50mAh
Charging time: 1-1.5 hours
Standby time: 130 hours
Playing time: 7-8 hours
Talk time: 7-8 hours

Charger Case:

Weight: 0.2lb (87g)
Size: 3.8*2.4*1.4inch (9.7*6.1*3.5cm)
Battery capacity: 500mAh
Charging time: 1-2 hours

-6-

Safety Instructions

To avoid hearing damage, keep the volume at a moderate level. Listening at high volumes for long periods of time may cause permanent damage to your hearing ability, even deafness. Avoid using the earphones while driving, cycling, crossing the road, or performing/participating in any activity that requires your full attention.

Note: The audio and video will be slightly delayed when you are watching video.



After full charge, please unplug the charging cable from the charging case to avoid keeping the case in charging state for a long time.

The output voltage of the charger are preferably 5V. If the charger's output voltage exceeds the specified range, it will cause serious damage to the product, and the product warranty will be invalid in that case.

-7-

Usage Guide and Precautions

1. Please do not use it in environments with large electromagnetic fields / high radiation level. Bluetooth signal will be interfered with.
2. Please do not keep the battery of the earphone is below 10%, which will result in insufficient audio output. It is recommended to use the headset at sufficient battery.
3. In case of obstacles or multiple 2.4GHz signals in the same frequency band, Bluetooth signal will be interfered with, which may occur stuttering.
4. Please do not put the Bluetooth earphones in water or apply excessive force on it, which may cause damage to the earphones and degraded sound quality.
5. Please charge the earbuds once every 30 days if it's not used for extended periods of time. Prevents failure to start due to lack of power when needed.
6. We may upgrade or modify the software or hardware and appearance of this product without notice to you.

-8-

FCC Caution:

This device complies with part 15 of the FCC Rules. Operation is subject to the following two conditions: (1) This device may not cause harmful interference, and (2) this device must accept any interference received, including interference that may cause undesired operation.

Any changes or modifications not expressly approved by the party responsible for compliance could void the user's authority to operate the equipment.

NOTE: This equipment has been tested and found to comply with the limits for a Class B digital device, pursuant to Part 15 of the FCC Rules.

These limits are designed to provide reasonable protection against harmful interference in a residential installation. This equipment generates, uses and can radiate radio frequency energy and, if not installed and used in accordance with the instructions, may cause harmful interference to radio communications. However, there is no guarantee that interference will not occur in a particular installation.

If this equipment does cause harmful interference to radio or television reception,

which can be determined by turning the equipment off and on, the user is encouraged to try to correct the interference by one or more of the following measures:

- Reorient or relocate the receiving antenna.

- Increase the separation between the equipment and receiver.

- Connect the equipment into an outlet on a circuit different from that to which the receiver is connected.

- Consult the dealer or an experienced radio/TV technician for help.

The device has been evaluated to meet general RF exposure requirement. The device can be used in portable exposure condition without restriction.