

# RCB-1001D

## Wall Transmitter On/Off Remote Control kit for Millivolt Valve Installation and Operating Instructions

IF YOU CANNOT READ OR UNDERSTAND THESE INSTALLATION INSTRUCTIONS. DO NOT ATTEMPT TO INSTALL OR OPERATE

This Manual on/off Wall Transmitter is designed to be used with **millivolt valve** gas appliances. It can be operated on/off from the wall transmitter or turned on and off manually from the receiver

### CONTENTS OF KIT

Description	Quantity
RCB-1001D Wall Transmitter	1
RCB-1001D Receiver	1
White Color Wall Cover Plate and Slide Button	1
Wiring Assembly – 18” Inches	1
Installation Instructions	1
#6 3/4 Screws (for Wall Cover Plate and Remote control)	4
#6 3/4 Screws (for fireplace system control covers)	2
Plastic wall anchors (for installing transmitter)	2

### WARNING

#### Important Safety Information

- Read this manual thoroughly prior to installing, programming or operating any remote control.
- This remote-control system is designed for use with a millivolt or 24V gas valve system. Do not use this remote-control system on applications with voltages above 24 Volts AC/DC and 1 amp current.
- This remote-control system requires two (2) “AAA” and four (4) “AA” alkaline batteries to power the Wall transmitter and receiver.
- **Turn appliance OFF (at the appliance or remote receiver) if you are away from your house for a long period of time.**

### FEATURES/SPECIFICATIONS

- Easy Operate Manual on/off
- Battery Powered Transmitter and Receiver
- 16 Security Codes
- Quick Disconnect Wiring Assembly

**WARNIN  
G**

Turn appliance OFF and allow to cool before installing or servicing. **DO NOT** connect 110-120 VAC wiring to the millivolt gas control valve. The remote operator must be installed exactly as outlined in these instructions. Read all instructions completely before attempting installation. Follow instructions carefully during installation. Any modification of components will void the warranty and may cause a fire hazard.

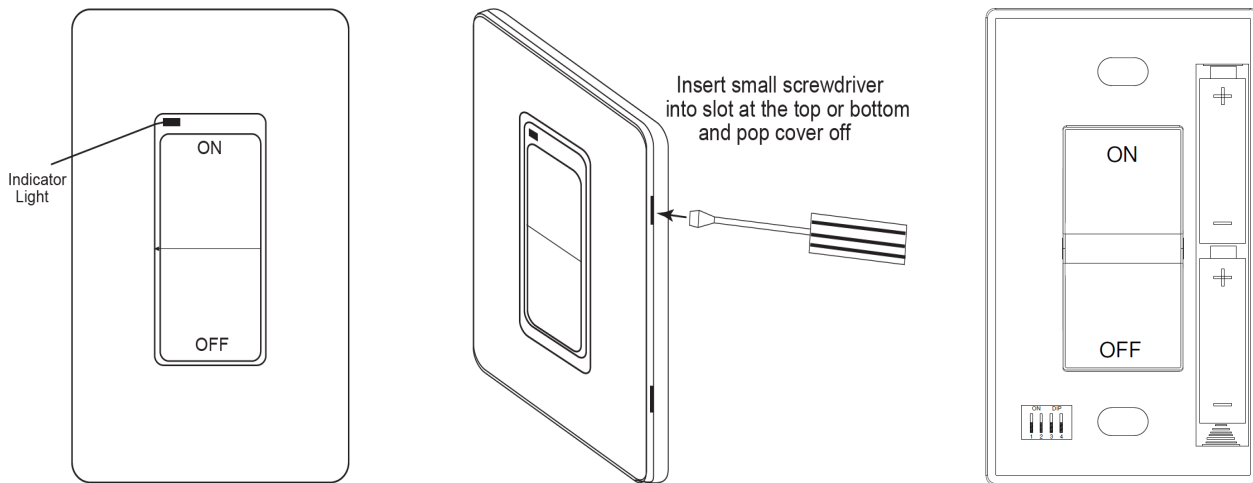
### **RCB-1001D Wall Transmitter:**

The wall transmitter is an ON/OFF rocker switch. When the rocker switch on the wall transmitter is pressed, the indicator light on the wall transmitter illuminates briefly to verify that a signal has been sent.

### **Wall Transmitter Installing and Replacing Batteries:**

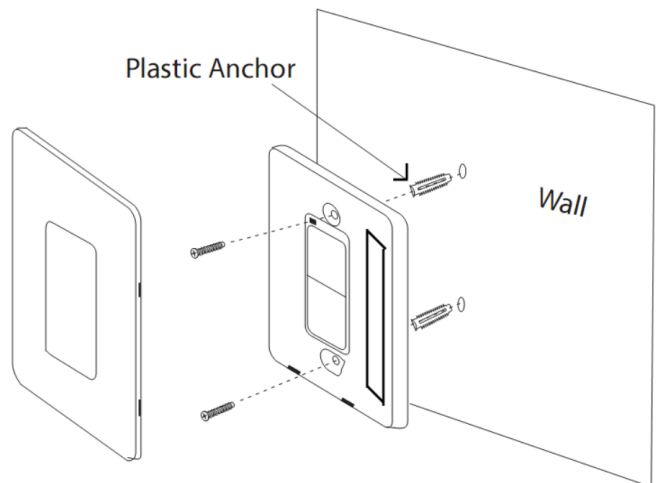
The wall transmitter uses two (2) “AAA” batteries. To install batteries:

1. Remove the faceplate from the base by inserting a small screwdriver into the small slot on the side of the faceplate (either side) then popping it off.
2. Install two “AAA” batteries on wall transmitter. Ensure the batteries are installed correct
3. After the batteries are installed, place and install the faceplate on the base.
4. The LED signal light should illuminate when either the **ON** or **OFF** button is pressed. If the signal light does not illuminate, check the position of the transmitter’s battery, and if the battery is fully charged.



### **WALL MOUNTING THE WALL TRANSMITTER**

- Remove faceplate from the base by inserting a small screwdriver into the small slot at the top or bottom of the faceplate then popping it off.
- Locate the (2) two mounting holes and mark the holes on the wall.
- Use the (2) two dry wall anchors and screws (supplied) to mount the base plate to the wall as shown.
- Then snap the faceplate back on to the Wall-mounted transmitter.
- The wall transmitter can also be mounted onto an existing (not metal) electrical box.



Make sure that the wires do not contact the appliances any place other than at the terminals. Exposure to temperatures higher than 250°F(105°C) may cause the receiver to malfunction or cause a fire hazard.

## **Receiver:**

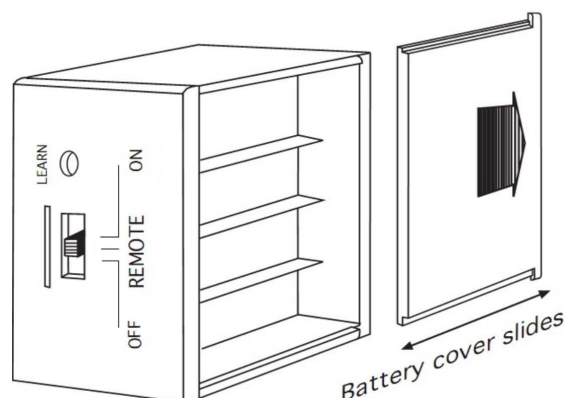
**Begin by installing** (4) AA-size batteries. Slide open the battery cover on receiver. It is recommended that ALKALINE batteries always be used for this product. Be sure the batteries are installed with the (+) and (-) ends facing the correct direction. Close battery cover

The remote receiver has a 3-position slide switch for selecting the mode of operation **ON/REMOTE/OFF**

1) **ON:** will manually turn ON the appliance.

2) **REMOTE:** will allow use of wall transmitter. If the system does not respond to the transmitter on initial use, check the battery positions in the remote. If that does not work, see **the LEARNING TRANSMITTER TO RECEIVER** section.

3) **OFF:** will manually turn OFF the appliance.



It is recommended that the slide switch be placed in the OFF position if you will be away from your home for an extended period of time.

**NOTE:** This product is designed for use with an attended hearth appliance or fire feature. Adults must be present when the Control System is operating. DO NOT program or thermostatically set this Control to operate a hearth appliance or fire feature when Adults are not physically present. Furthermore, DO NOT leave the hearth appliance or fire feature burning unattended; it may cause damage or serious injury. If an Adult is going to be away from the hearth appliance or fire feature for any length of time, then the handheld/wall mount, receiver/control module and application should be in the "OFF" position.

This remote control system must be installed exactly as outlined in these instructions. Read all instructions completely before attempting installation. Follow instructions carefully during installation. Any modifications of this remote control or any of its components will void the warranty and may pose a fire hazard.

Do not connect any gas valve or electronic module directly to 110-120VAC power. Consult gas appliance manufacturer's instructions and wiring schematics for proper placement of all wires. All electronic modules are to be wired to manufacturer's specifications.

The following wiring diagrams are for illustration purpose only. Follow instructions from manufacturer of gas valve and/ or electronic module for correct wiring procedures. Improper installation of electric components can cause damage to electronic module, gas valve and remote receiver.

## **Installation**

The remote receiver can be either wall-mounted in a standard plastic switch box (not metal) or placed on or near the fireplace hearth. Preferably, the remote receiver should be wall-mounted in a plastic switch box, as this will protect its electronic components from the heat produced by the gas appliance. **The remote receiver should be kept away from temperatures exceeding 130° F. Battery life is also significantly shortened if batteries are exposed to temperatures 130°F or higher.**

Before installation make sure the remote receiver slide switch is in the OFF position.

## **Wall Mounting**

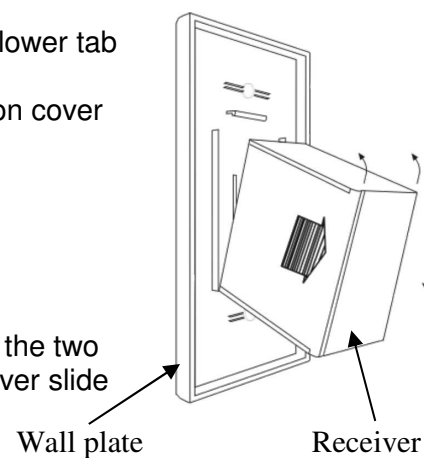
When wall mounting the remote receiver, longer wires (not included) are required to connect to the gas valve or electronic module. These wires must: Be at least 18 Gauge (AWG). Be no longer than 20-feet Have no splices

To attach wall cover plate to receiver box:

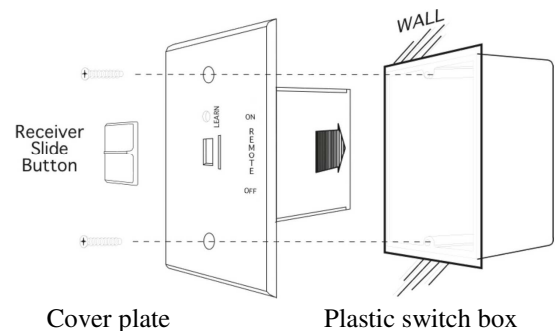
1. Position the receiver as shown in diagram to the right with lower tab on wall cover

Plate into groove of receiver (Make sure the LEARN hole on cover plate properly Aligns with remote receiver)

2. Pull receiver up and snap into top tab of cover plate.
3. Position the wall cover plate so the word ON is facing up.
4. Install the remote receiver into the plastic switch box using the two Long screws provided. Push the slide Button over the receiver slide

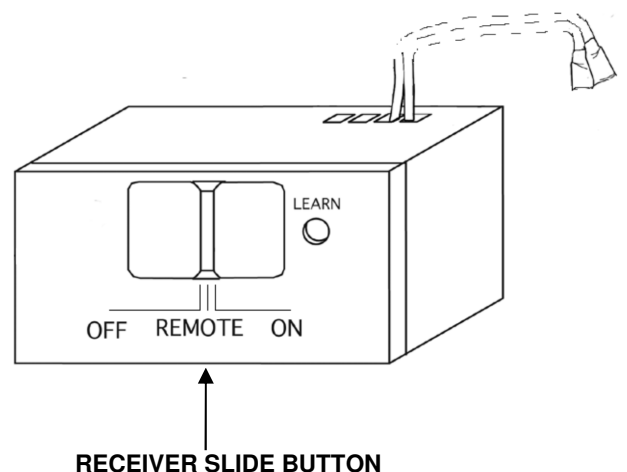


NOTE: The remote receiver will only respond to the transmitter when the 3-position slide button on the remote receiver is in the REMOTE position. If the system does not respond to the battery transmitter on initial use, see LEARNING TRANSMITTER TO RECEIVER, and recheck battery positions in the remote receiver.



## **Hearth Mount**

The remote receiver can be placed on the fireplace hearth or under the fireplace behind the control access panel. Use the wires attached to the remote receiver to connect to the gas valve or the electric module (piggyback connectors have both male and female terminals for flexibility). Be sure that the connectors do not touch each other or other bare metal surfaces; this will cause the appliance to turn ON. The connectors may be wrapped with electrical tape to prevent this.

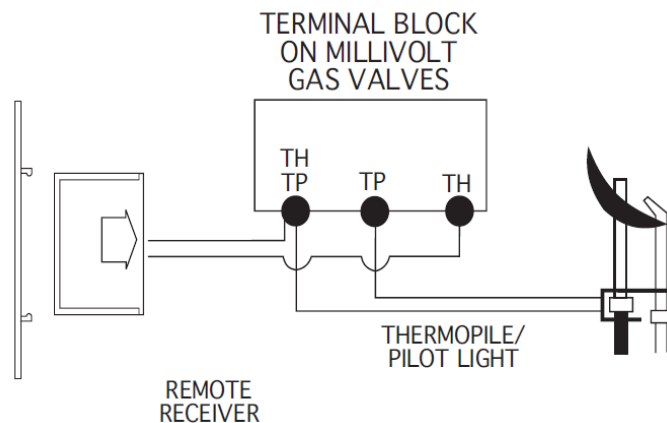


## **WIRING INSTRUCTIONS**

A qualified electrician or a gas technician who is familiar with the gas appliance and gas valves that will be operated by this remote should install the remote control system. Incorrect wiring connections **WILL** cause damage to the gas valve or electronic module operating the gas appliance and may also damage the remote receiver.

### **WIRING MILLIVOLT VALVES**

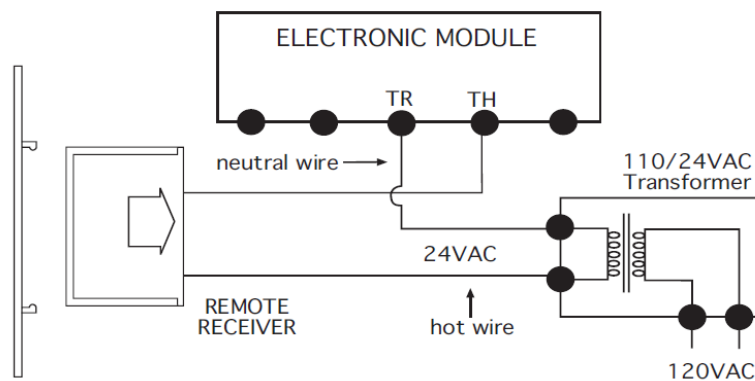
Connect one wire from the receiver to the TH terminal on the gas millivolt valve. Connect the other wire from the receiver to the TH/TP terminal on the gas millivolt valve (**see below wiring diagram**)



### **WIRING ELECTRONIC SPARK IGNITIONS**

The receiver can be connected, in series, to a 24VAC transformer to the TR (transformer) terminal on the ELECTRONIC MODULE. Connect the hot wire from the 24VAC transformer to either of the wire terminals on the remote receiver. Connect another wire between the other receiver wire terminal and the TH (thermostat) terminal on the **ELECTRONIC MODULE** (**see below wiring diagram**)

#### **WIRING ELECTRONIC SPARK IGNITIONS**



### **ELECTRONIC SPARK IGNITIONS SYSTEM CHECK**

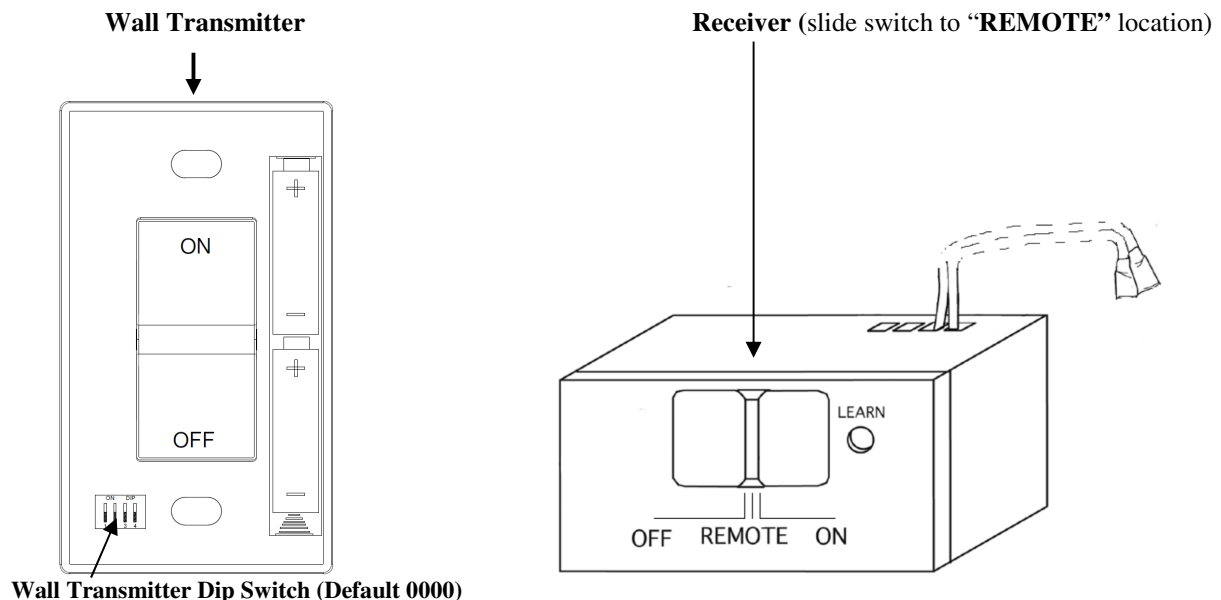
- Slide the 3-position button on the remote receiver to the ON position. The spark electrode should begin sparking to ignite the pilot. After the pilot flame is lit, the main gas valve should open and the main gas flame should ignite.
- Slide the button to OFF. The main gas flame and pilot flame should both extinguish.
- Slide the button to REMOTE, and then press the ON button on the wall transmitter to change the system to ON. The spark electrode should begin sparking to ignite the pilot. After the pilot is lit, the main gas valve should open and the main gas flame should ignite.

## GENERAL INFORMATION

### Learning Wall Transmitter to Receiver:

***(Manufactory have done the default (DIP) Switches setting learning, User can skip learning if not change the (DIP) Switches setting Security Codes)***

1. When finish install batteries to Wall Transmitter and Receiver, the wall transmitter privacy (DIP) Switches are preset at the factory. Setting the 4 bits DIP switches on transmitter to select a new security code.
2. Put the receiver slide switch to "**REMOTE**" location. Using a small screwdriver or end of a paper clip gently press and hold the "**LEARN**" button on the receiver for about 3 second, then the receiver will emit an audible 3 "beep" sounds
3. After the receiver emits 3 "beep" sounds. Press the wall transmitter "ON" or "OFF" button and release at once. The receiver will emit several beeps indicating that the transmitter's code has been accepted into the receiver.
4. If you are unsuccessful in matching the security code on the first attempt repeat step 1-3



### **WAR NING**

**Do not use two (2) or more remote control systems in the same area with the same dip switch settings, as they will communicate with each other. This may cause the appliances to malfunction. It need to User setting new DIP Switch Security Codes**

### Wall Transmitter Key SETTINGS

1. Press the "**ON**" button once to turn on the appliance.
2. Press the "**OFF**" button once again to turn off the appliance.

### WALL TRANSMITTER

The Wall Transmitter operates, on RF (radio frequency) signals that are sent by the Wall Transmitter to the RECEIVER that operates the appliance. It is recommended that the Wall Transmitter be located within the 30-foot operating range, preferably in the same room in which the appliance is located.

## **Testing Your New Remote System**

1. Light your gas appliance following the appliance lighting instructions that come with the appliance. Confirm that the pilot light is on; it must be in operation for the remote control to operate the main gas valve. Appliance control knob must be in the ON position. Appliance ON/OFF switch must be in ON position.
2. Slide the 3-position button on the remote receiver to the **ON** position. The main gas flame should ignite.
3. Slide the button to **OFF**. The flame should extinguish (the pilot light will remain on).
4. Slide the button to **REMOTE** (the center position),
  - 1) Press the wall transmitter to turn the system to ON. The main gas flame should ignite.
  - 2) Press the transmitter to turn the system to OFF. The flame should extinguish (the pilot light will remain on).

## **TROUBLESHOOTING**

<b>Symptom</b>	<b>Causes</b>	<b>Action</b>
Wall transmitter indicator light LED not on when either the <b>ON</b> or <b>OFF</b> button is pressed	Wall transmitter Low Battery	Replace batteries.
Receiver emits the beep in every minute	Receiver Low Battery	Replace batteries.
Appliance does not come on.	1. DIP (Privacy) switch setting on transmitter does not match receiver	1. Make sure the transmitter is matched to the receiver.
	2. Distance between the transmitter and receiver is more than 30 feet	2. Make sure the operating distance is less than 30 feet
Receiver cannot receive signal.	1. Receiver is installed in an enclosure	1. Make sure the receiver is not inside a tight enclosure.

**FCC Statement**

1. This device complies with Part 15 of the FCC Rules. Operation is subject to the following two conditions:

(1) This device may not cause harmful interference.

(2) This device must accept any interference received, including interference that may cause undesired operation.

2. Changes or modifications not expressly approved by the party responsible for compliance could void the user's authority to operate the equipment.

**NOTE:**

This equipment has been tested and found to comply with the limits for a Class B digital device, pursuant to Part 15 of the FCC Rules.

These limits are designed to provide reasonable protection against harmful interference in a residential installation.

This equipment generates uses and can radiate radio frequency energy and, if not installed and used in accordance with the instructions, may cause harmful interference to radio communications. However, there is no guarantee that interference will not occur in a particular installation. If this equipment does cause harmful interference to radio or television reception, which can be determined by turning the equipment off and on, the user is encouraged to try to correct the interference by one or more of the following measures:

Reorient or relocate the receiving antenna.

Increase the separation between the equipment and receiver.

Connect the equipment into an outlet on a circuit different from that to which the receiver is connected.

Consult the dealer or an experienced radio/TV technician for help.