

TEST REPORT

FCC ID: 2AWRS-A01

Product: Wireless Mouse

Model No.: A01

Additional Model No.: DC-0364A, WFH-BLK-STK-12M, A2, A3, A4, A5, A6, A7, A8, A9

Trade Mark: yooey

Report No.: TCT210511E002

Issued Date: May 18, 2021

Issued for:

Dongguan yooey technology co., ltd.

No.3 longyuan street, xiagan second industrial park, Chang'an, dongguan, China

Issued By:

Shenzhen Tongce Testing Lab

TCT Testing Industrial Park, Fuqiao 5th Industrial Zone, Fuhai Street, Bao'an District, Shenzhen, Guangdong, 518103, People's Republic of China

TEL: +86-755-27673339

FAX: +86-755-27673332

Note: This report shall not be reproduced except in full, without the written approval of Shenzhen Tongce Testing Lab.

This document may be altered or revised by Shenzhen Tongce Testing Lab personnel only, and shall be noted in the revision section of the document. The test results in the report only apply to the tested sample.

TABLE OF CONTENTS

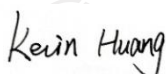
1. Test Certification	3
2. Test Result Summary	4
3. EUT Description.....	5
4. General Information.....	7
4.1. Test Environment and Mode.....	7
4.2. Description of Support Units.....	7
5. Facilities and Accreditations	8
5.1. Facilities	8
5.2. Location	8
5.3. Measurement Uncertainty	8
6. Test Results and Measurement Data	9
6.1. Antenna Requirement	9
6.2. Conducted Emission.....	10
6.3. Radiated Emission Measurement	11
6.4. 20dB Occupied Bandwidth	23
Appendix A: Photographs of Test Setup	
Appendix B: Photographs of EUT	

1. Test Certification

Product:	Wireless Mouse
Model No.:	A01
Additional Model No.:	DC-0364A, WFH-BLK-STK-12M, A2, A3, A4, A5, A6, A7, A8, A9
Trade Mark:	yooey
Applicant:	Dongguan yooey technology co., ltd.
Address:	No.3 longyuan street, xiagan second industrial park, Chang'an, dongguan, China
Manufacturer:	Dongguan yooey technology co., ltd.
Address:	No.3 longyuan street, xiagan second industrial park, Chang'an, dongguan, China
Date of Test:	May 12, 2021 – May 17, 2021
Applicable Standards:	FCC CFR Title 47 Part 15 Subpart C Section 15.249 ANSI C63.10:2013

The above equipment has been tested by Shenzhen Tongce Testing Lab and found compliance with the requirements set forth in the technical standards mentioned above. The results of testing in this report apply only to the product/system, which was tested. Other similar equipment will not necessarily produce the same results due to production tolerance and measurement uncertainties.

Tested By:



Kevin Huang

Date:

May 17, 2021

Reviewed By:



Beryl Zhao

Date:

May 18, 2021

Approved By:



Tomsin

Date:

May 18, 2021

2. Test Result Summary

Requirement	CFR 47 Section	Result
Antenna Requirement	§15.203	PASS
AC Power Line Conducted Emission	§15.207	N/A
Field Strength of Fundamental	§15.249 (a)	PASS
Spurious Emissions	§15.249 (a) (d)/ §15.209	PASS
Band Edge	§15.249 (d)/ §15.205	PASS
20dB Occupied Bandwidth	§15.215 (c)	PASS

Note:

1. Pass: Test item meets the requirement.
2. Fail: Test item does not meet the requirement.
3. N/A: Test case does not apply to the test object.
4. The test result judgment is decided by the limit of test standard.

3. EUT Description

Product:	Wireless Mouse
Model No.:	A01
Additional Model No.:	DC-0364A, WFH-BLK-STK-12M, A2, A3, A4, A5, A6, A7, A8, A9
Trade Mark:	yooey
Operation Frequency:	2404MHz - 2478MHz
Number of Channel:	75
Modulation Technology:	GFSK
Antenna Type:	PCB Antenna
Antenna Gain:	-2dBi
Power Supply:	DC 3V
Remark:	All models above are identical in interior structure, electrical circuits and components, and just model names are different for the marketing requirement.

Note: The antenna gain listed in this report is provided by applicant, and the test laboratory is not responsible for this parameter.

Operation Frequency Each of Channel

Channel	Frequency	Channel	Frequency	Channel	Frequency	Channel	Frequency
0	2404MHz	19	2423MHz	38	2442MHz	57	2461MHz
1	2405MHz	20	2424MHz	39	2443MHz	58	2462MHz
...
9	2413MHz	28	2432MHz	47	2451MHz	66	2470MHz
10	2414MHz	29	2433MHz	48	2452MHz	67	2471MHz
...
17	2421MHz	36	2440MHz	55	2459MHz	74	2478MHz
18	2422MHz	37	2441MHz	56	2460MHz		-

Note:

In section 15.31(m), regards to the operating frequency range over 10 MHz, the Lowest frequency, the middle frequency, and the highest frequency of channel were selected to perform the test, and the selected channel see below:

Channel	Frequency
The Lowest channel	2404MHz
The Middle channel	2441MHz
The Highest channel	2478MHz

4. General Information

4.1. Test Environment and Mode

Operating Environment:		
Condition	Conducted Emission	Radiated Emission
Temperature:	25.0 °C	25.0 °C
Humidity:	55 % RH	55 % RH
Atmospheric Pressure:	1010 mbar	1010 mbar
Test Mode:		
Engineering mode:	Keep the EUT in continuous transmitting by select channel and modulations with Fully-charged battery	
The sample was placed 0.8m & 1.5m for the measurement below & above 1GHz above the ground plane of 3m chamber. Measurements in both horizontal and vertical polarities were performed. During the test, each emission was maximized by: having the EUT continuously working, investigated all operating modes, rotated about all 3 axis (X, Y & Z) and considered typical configuration to obtain worst position, manipulating interconnecting cables, rotating the turntable, varying antenna height from 1m to 4m in both horizontal and vertical polarizations. The emissions worst-case(Z axis) are shown in Test Results of the following pages.		

4.2. Description of Support Units

The EUT has been tested as an independent unit together with other necessary accessories or support units. The following support units or accessories were used to form a representative test configuration during the tests.

Equipment	Model No.	Serial No.	FCC ID	Trade Name
/	/	/	/	/

Note:

1. All the equipment/cables were placed in the worst-case configuration to maximize the emission during the test.
2. Grounding was established in accordance with the manufacturer's requirements and conditions for the intended use.

5. Facilities and Accreditations

5.1. Facilities

The test facility is recognized, certified, or accredited by the following organizations:

- FCC - Registration No.: 645098

Shenzhen Tongce Testing Lab

Designation Number: CN1205

The 3m Semi-anechoic chamber has been registered and fully described in a report with the (FCC) Federal Communications Commission. The acceptance letter from the FCC is maintained in our files.

- IC - Registration No.: 10668A-1

CAB identifier: CN0031

The 3m Semi-anechoic chamber of SHENZHEN TONGCE TESTING LAB has been registered by Certification and Engineering Bureau of Industry Canada for radio equipment testing

5.2. Location

Shenzhen Tongce Testing Lab

Address: TCT Testing Industrial Park, Fuqiao 5th Industrial Zone, Fuhai Street,
Bao'an District, Shenzhen, Guangdong, 518103, People's Republic of China

TEL: +86-755-27673339

5.3. Measurement Uncertainty

The reported uncertainty of measurement $y \pm U$, where expended uncertainty U is based on a standard uncertainty multiplied by a coverage factor of $k=2$, providing a level of confidence of approximately 95 %.

No.	Item	MU
1	Conducted Emission	$\pm 2.56\text{dB}$
2	RF power, conducted	$\pm 0.12\text{dB}$
3	Spurious emissions, conducted	$\pm 0.11\text{dB}$
4	All emissions, radiated(<1GHz)	$\pm 3.92\text{dB}$
5	All emissions, radiated(>1GHz)	$\pm 4.28\text{dB}$
6	Temperature	$\pm 0.1^{\circ}\text{C}$
7	Humidity	$\pm 1.0\%$

6. Test Results and Measurement Data

6.1. Antenna Requirement

Standard requirement:

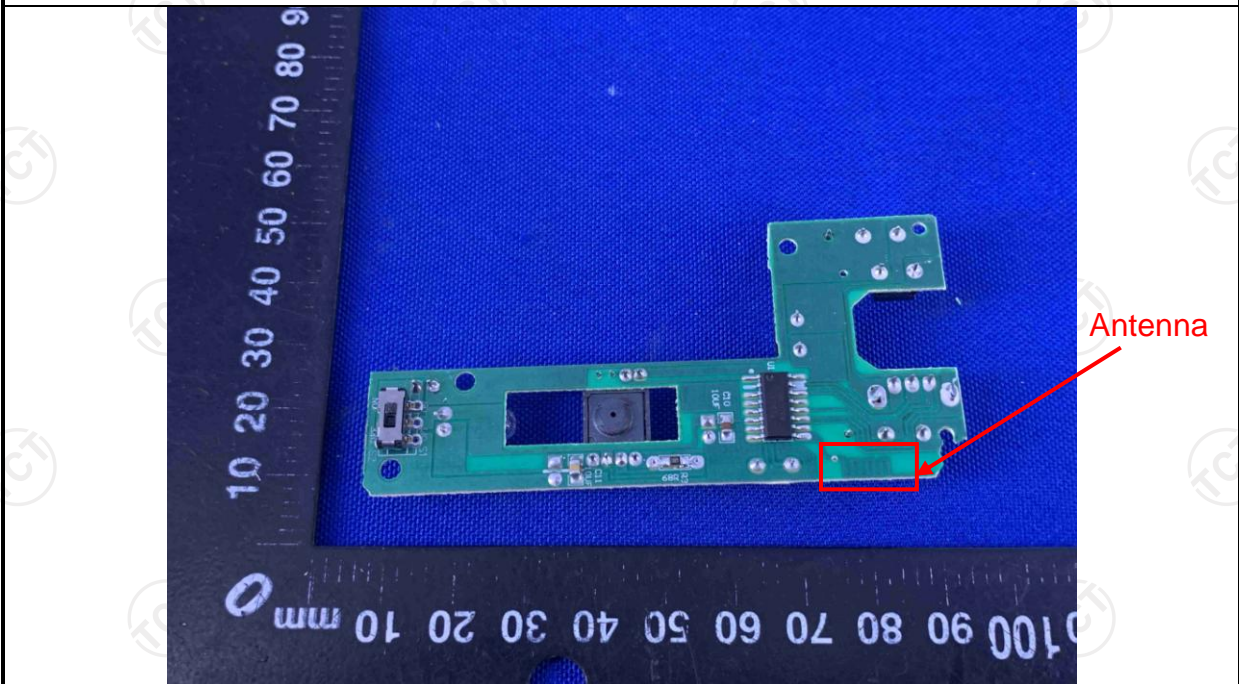
FCC Part15 C Section 15.203

15.203 requirement:

An intentional radiator shall be designed to ensure that no antenna other than that furnished by the responsible party shall be used with the device. The use of a permanently attached antenna or of an antenna that uses a unique coupling to the intentional radiator, the manufacturer may design the unit so that a broken antenna can be replaced by the user, but the use of a standard antenna jack or electrical connector is prohibited.

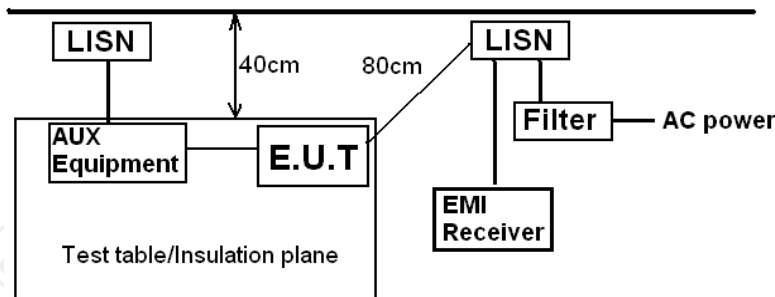
E.U.T Antenna:

The EUT antenna is PCB antenna which permanently attached, and the best case gain of the antenna is -2dBi.



6.2. Conducted Emission

6.2.1. Test Specification

Test Requirement:	FCC Part15 C Section 15.207														
Test Method:	ANSI C63.10:2013														
Frequency Range:	150 kHz to 30 MHz														
Receiver setup:	RBW=9 kHz, VBW=30 kHz, Sweep time=auto														
Limits:	<table><tr><th rowspan="2">Frequency range (MHz)</th><th colspan="2">Limit (dBuV)</th></tr><tr><th>Quasi-peak</th><th>Average</th></tr><tr><td>0.15-0.5</td><td>66 to 56*</td><td>56 to 46*</td></tr><tr><td>0.5-5</td><td>56</td><td>46</td></tr><tr><td>5-30</td><td>60</td><td>50</td></tr></table>	Frequency range (MHz)	Limit (dBuV)		Quasi-peak	Average	0.15-0.5	66 to 56*	56 to 46*	0.5-5	56	46	5-30	60	50
Frequency range (MHz)	Limit (dBuV)														
	Quasi-peak	Average													
0.15-0.5	66 to 56*	56 to 46*													
0.5-5	56	46													
5-30	60	50													
Test Setup:	<div><p>Reference Plane</p><p>Remark: E.U.T: Equipment Under Test LISN: Line Impedance Stabilization Network Test table height=0.8m</p></div>														
Test Mode:	Transmitting mode with modulation														
Test Procedure:	<div><div>1. The E.U.T and simulators are connected to the main power through a line impedance stabilization network (L.I.S.N.). This provides a 50ohm/50uH coupling impedance for the measuring equipment.</div><div>2. The peripheral devices are also connected to the main power through a LISN that provides a 50ohm/50uH coupling impedance with 50ohm termination. (Please refer to the block diagram of the test setup and photographs).</div><div>3. Both sides of A.C. line are checked for maximum conducted interference. In order to find the maximum emission, the relative positions of equipment and all of the interface cables must be changed according to ANSI C63.10:2013 on conducted measurement.</div></div>														
Test Result:	N/A														

6.3. Radiated Emission Measurement

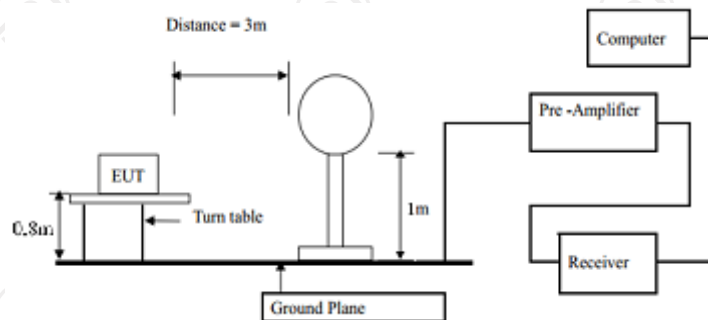
6.3.1. Test Specification

Test Requirement:	FCC Part15 C Section 15.209				
Test Method:	ANSI C63.10:2013				
Frequency Range:	9 kHz to 25 GHz				
Measurement Distance:	3 m				
Antenna Polarization:	Horizontal & Vertical				
Receiver Setup:	Frequency	Detector	RBW	VBW	Remark
	9kHz- 150kHz	Quasi-peak	200Hz	1kHz	Quasi-peak Value
	150kHz- 30MHz	Quasi-peak	9kHz	30kHz	Quasi-peak Value
	30MHz-1GHz	Quasi-peak	120kHz	300kHz	Quasi-peak Value
	Above 1GHz	Peak	1MHz	3MHz	Peak Value
Limit(Field strength of the fundamental signal):	Frequency		Limit (dBuV/m @3m)		Remark
	2400MHz-2483.5MHz		94.00		Average Value
			114.00		Peak Value
Limit(Spurious Emissions):	Frequency		Limit (dBuV/m @3m)		Remark
	0.009-0.490		2400/F(KHz)		Quasi-peak Value
	0.490-1.705		24000/F(KHz)		Quasi-peak Value
	1.705-30		30		Quasi-peak Value
	30MHz-88MHz		40.0		Quasi-peak Value
	88MHz-216MHz		43.5		Quasi-peak Value
	216MHz-960MHz		46.0		Quasi-peak Value
	960MHz-1GHz		54.0		Quasi-peak Value
	Above 1GHz		54.0		Average Value
Limit (band edge) :			74.0		Peak Value
	Emissions radiated outside of the specified frequency bands, except for harmonics, shall be attenuated by at least 50 dB below the level of the fundamental or to the general radiated emission limits in Section 15.209, whichever is the lesser attenuation.				
Test Procedure:	<div>1. The EUT was placed on the top of a rotating table 0.8 meters above the ground at a 3 meter chamber in below 1GHz, 1.5m above the ground in above 1GHz. The table was rotated 360 degrees to determine the position of the highest radiation.</div> <div>2. The EUT was set 3 meters away from the interference-receiving antenna, which was mounted on the top of a variable-height antenna tower.</div> <div>3. The antenna height is varied from one meter to four meters above the ground to determine the maximum value of the field strength. Both horizontal and vertical polarizations of the antenna are set to make the measurement.</div>				

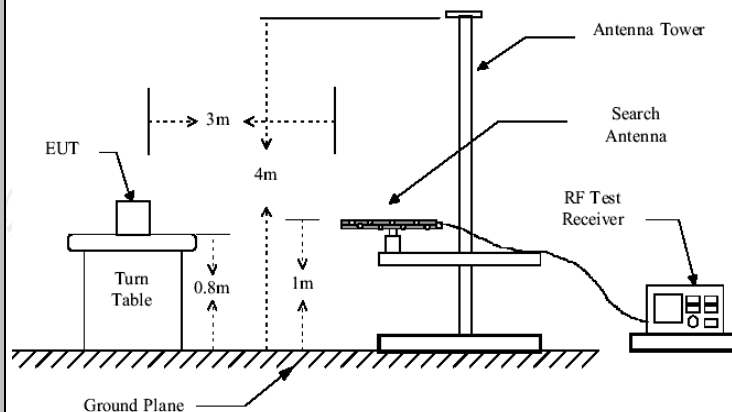
4. For each suspected emission, the EUT was arranged to its worst case and then the antenna was tuned to heights from 1 meter to 4 meters and the rotatable table was turned from 0 degrees to 360 degrees to find the maximum reading.
5. The test-receiver system was set to Peak Detect Function and Specified Bandwidth with Maximum Hold Mode.
6. If the emission level of the EUT in peak mode was 10dB lower than the limit specified, then testing could be stopped and the peak values of the EUT would be reported. Otherwise the emissions that did not have 10dB margin would be re-tested one by one using peak, quasi-peak or average method as specified and then reported in a data sheet.

Test setup:

For radiated emissions below 30MHz

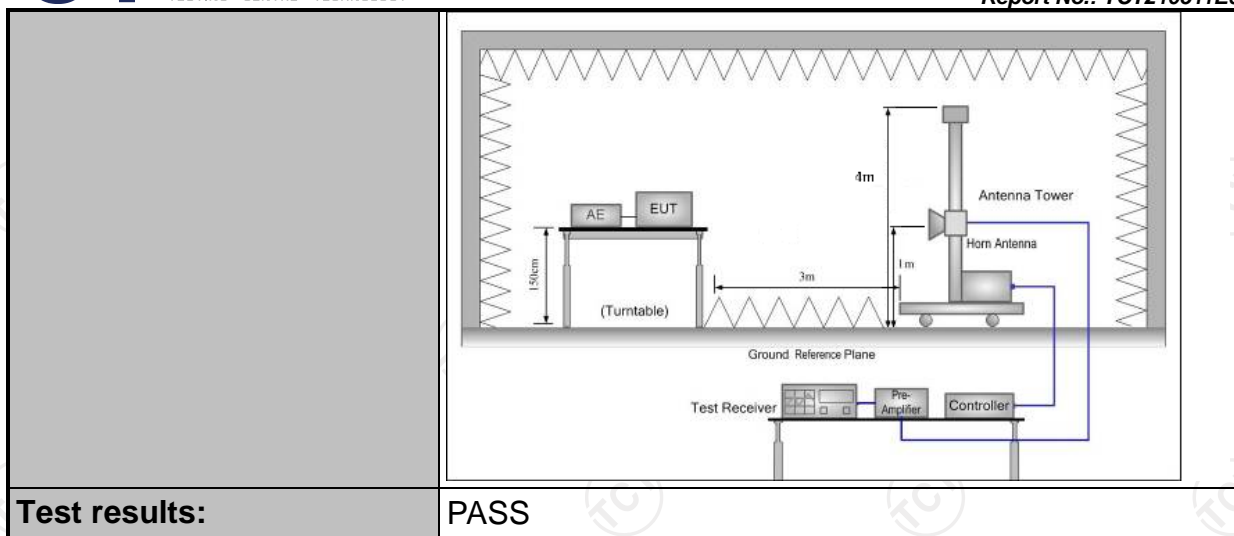


30MHz to 1GHz



Above 1GHz

(The diagram below shows the test setup that is utilized to make the measurements for emission from 1GHz to the tenth harmonic of the highest fundamental frequency or to 40GHz emissions, whichever is lower.)



6.3.2. Test Instruments

Radiated Emission Test Site (966)				
Name of Equipment	Manufacturer	Model	Serial Number	Calibration Due
Test Receiver	ROHDE&SCHW ARZ	ESIB7	100197	Jul. 27, 2021
Spectrum Analyzer	ROHDE&SCHW ARZ	FSQ40	200061	Sep. 11, 2021
Pre-amplifier	EM Electronics Corporation CO.,LTD	EM30265	07032613	Sep. 02, 2021
Pre-amplifier	HP	8447D	2727A05017	Sep. 02, 2021
Loop antenna	ZHINAN	ZN30900A	12024	Sep. 05, 2022
Broadband Antenna	Schwarzbeck	VULB9163	340	Sep. 04, 2022
Horn Antenna	Schwarzbeck	BBHA 9120D	631	Sep. 04, 2022
Horn Antenna	A-INFO	LB-180400-KF	J211020657	Sep. 04, 2022
Antenna Mast	Keleto	RE-AM	N/A	N/A
Line-4	TCT	RE-high-04	N/A	Sep. 02, 2021
Line-8	TCT	RE-01	N/A	Jul. 27, 2021
EMI Test Software	Shurple Technology	EZ-EMC	N/A	N/A

Note: The calibration interval of the above test instruments is 12 months and the calibrations are traceable to international system unit (SI).

6.3.3. Test Data

Field Strength of Fundamental

Frequency (MHz)	Emission PK (dBuV/m)	Horizontal /Vertical	Limits PK (dBuV/m)	Margin (dB)
2404	82.16	H	114	-31.75
2404	78.42	V	114	-35.89
2441	79.58	H	114	-34.31
2441	75.74	V	114	-38.17
2478	77.19	H	114	-36.25
2478	73.37	V	114	-40.92

Frequency (MHz)	Emission AV (dBuV/m)	Horizontal /Vertical	Limits AV (dBuV/m)	Margin (dB)
2404	67.58	H	94	-26.54
2404	64.26	V	94	-29.63
2441	66.40	H	94	-27.01
2441	64.73	V	94	-29.48
2478	64.81	H	94	-29.81
2478	63.64	V	94	-30.72

Spurious Emissions

Frequency Range (9 kHz-30MHz)

Frequency (MHz)	Level@3m (dBμV/m)	Limit@3m (dBμV/m)
--	--	--
--	--	--
--	--	--
--	--	--

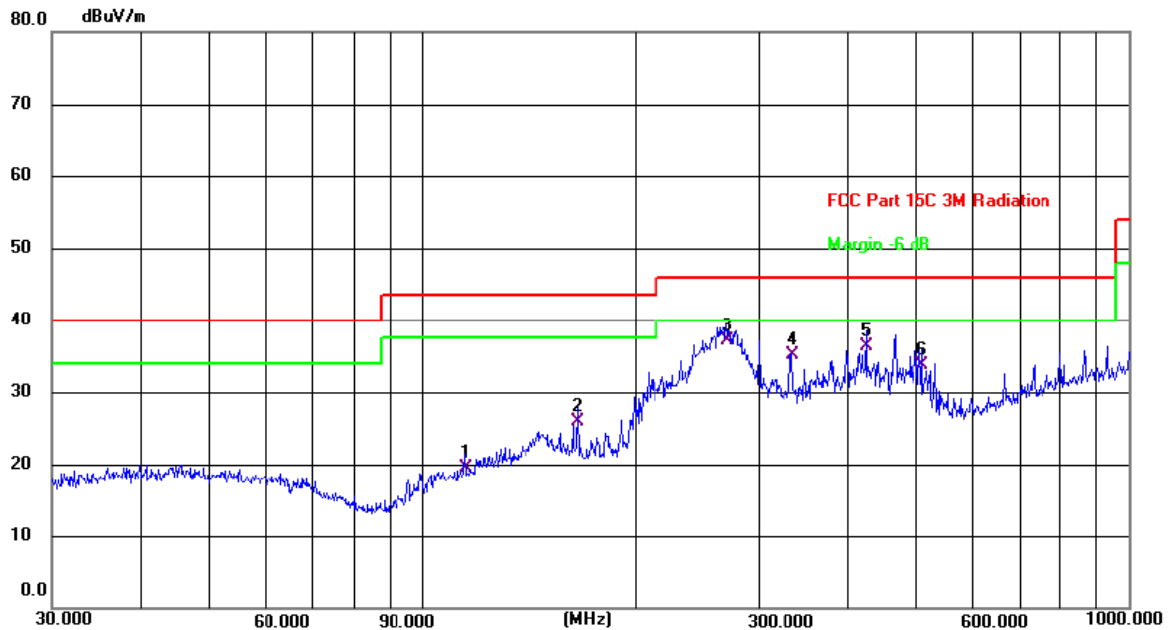
Note: 1. Emission Level=Reading+ Cable loss-Antenna factor-Amp factor.

2. The emission levels are 20 dB below the limit value, which are not reported. It is deemed to comply with the requirement.

3. For fundamental frequency, RBW >20dB BW, VBW>=RBW, PK detector is for PK value, RMS detector is for AV value.

Frequency Range (30MHz-1GHz)

Horizontal:



Site

Polarization: **Horizontal**

Temperature: 22.9(C)

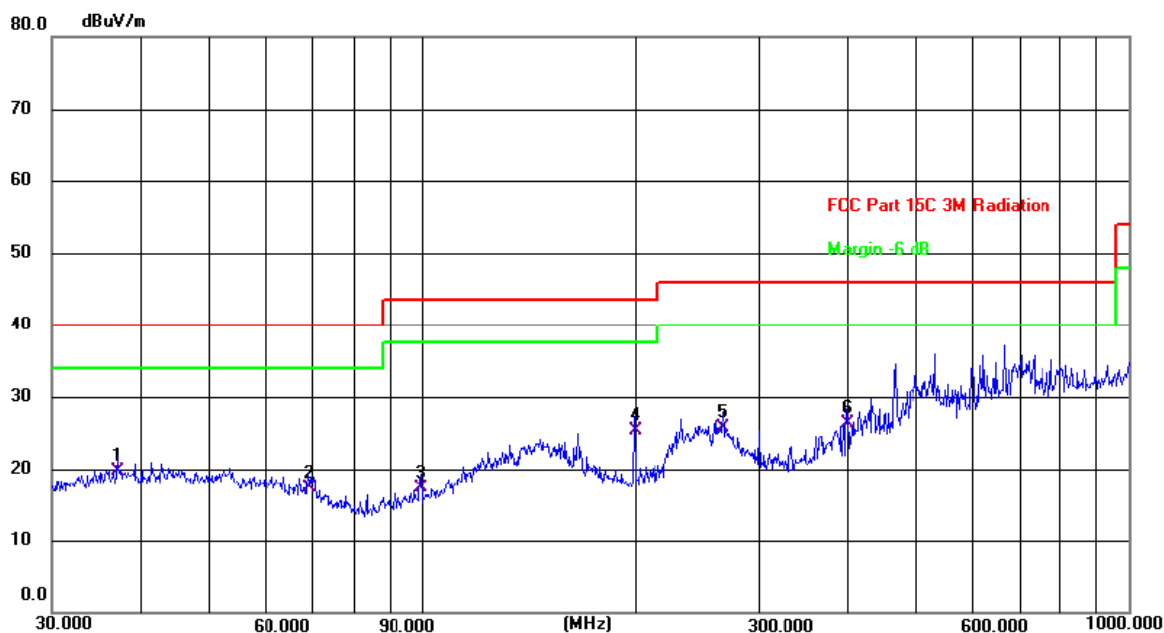
Limit: FCC Part 15C 3M Radiation

Power: DC 3 V

Humidity: 40 %

No.	Frequency (MHz)	Reading (dBuV)	Factor (dB/m)	Level (dBuV/m)	Limit (dBuV/m)	Margin (dB)	Detector	P/F
1	114.9169	7.81	11.69	19.50	43.50	-24.00	QP	P
2	166.0680	12.61	13.29	25.90	43.50	-17.60	QP	P
3 *	269.4284	24.00	13.20	37.20	46.00	-8.80	QP	P
4	333.6867	20.32	14.88	35.20	46.00	-10.80	QP	P
5	425.0280	19.21	17.19	36.40	46.00	-9.60	QP	P
6	510.0436	14.53	19.27	33.80	46.00	-12.20	QP	P

Vertical:



Site

Polarization: **Vertical**

Temperature: 22.9(C)

Limit: FCC Part 15C 3M Radiation

Power: DC 3 V

Humidity: 40 %

No.	Frequency (MHz)	Reading (dBuV)	Factor (dB/m)	Level (dBuV/m)	Limit (dBuV/m)	Margin (dB)	Detector	P/F
1	37.0248	6.13	13.67	19.80	40.00	-20.20	QP	P
2	69.1141	5.99	11.41	17.40	40.00	-22.60	QP	P
3	99.8777	6.92	10.38	17.30	43.50	-26.20	QP	P
4 *	199.9856	14.64	10.66	25.30	43.50	-18.20	QP	P
5	266.6089	12.71	13.09	25.80	46.00	-20.20	QP	P
6	399.0302	9.75	16.55	26.30	46.00	-19.70	QP	P

Note: 1. Measurements were conducted in all channels (high, middle, low), and the worst case (lowest channel) was submitted only.

2. Any value more than 10dB below limit have not been specifically reported.

Above 1GHz

Low channel: 2404MHz									
Frequency (MHz)	Ant. Pol. H/V	Peak reading (dBμV)	AV reading (dBμV)	Correction Factor (dB/m)	Emission Level		Peak limit (dBμV/m)	AV limit (dBμV/m)	Margin (dB)
					Peak (dBμV/m)	AV (dBμV/m)			
4808	H	51.85	---	-3.94	47.91	---	74	54	-6.09
7212	H	46.27	---	0.52	46.79	---	74	54	-7.21
---	---	---	---	---	---	---	---	---	---
4808	V	49.61	---	-3.94	45.67	---	74	54	-8.33
7212	V	43.94	---	0.52	44.46	---	74	54	-9.54
---	---	---	---	---	---	---	---	---	---

Middle channel: 2441MHz									
Frequency (MHz)	Ant. Pol. H/V	Peak reading (dBμV)	AV reading (dBμV)	Correction Factor (dB/m)	Emission Level		Peak limit (dBμV/m)	AV limit (dBμV/m)	Margin (dB)
					Peak (dBμV/m)	AV (dBμV/m)			
4882	H	51.06	---	-3.98	47.08	---	74	54	-6.92
7323	H	45.73	---	0.57	46.30	---	74	54	-7.70
---	---	---	---	---	---	---	---	---	---
4882	V	51.59	---	-3.98	47.61	---	74	54	-6.39
7323	V	44.30	---	0.57	44.87	---	74	54	-9.13
---	---	---	---	---	---	---	---	---	---

High channel: 2478MHz									
Frequency (MHz)	Ant. Pol. H/V	Peak reading (dBμV)	AV reading (dBμV)	Correction Factor (dB/m)	Emission Level		Peak limit (dBμV/m)	AV limit (dBμV/m)	Margin (dB)
					Peak (dBμV/m)	AV (dBμV/m)			
4956	H	52.18	---	-3.98	48.20	---	74	54	-5.80
7434	H	47.46	---	0.57	48.03	---	74	54	-5.97
---	---	---	---	---	---	---	---	---	---
4956	V	51.25	---	-3.98	47.27	---	74	54	-6.73
7434	V	45.63	---	0.57	46.20	---	74	54	-7.80
---	---	---	---	---	---	---	---	---	---

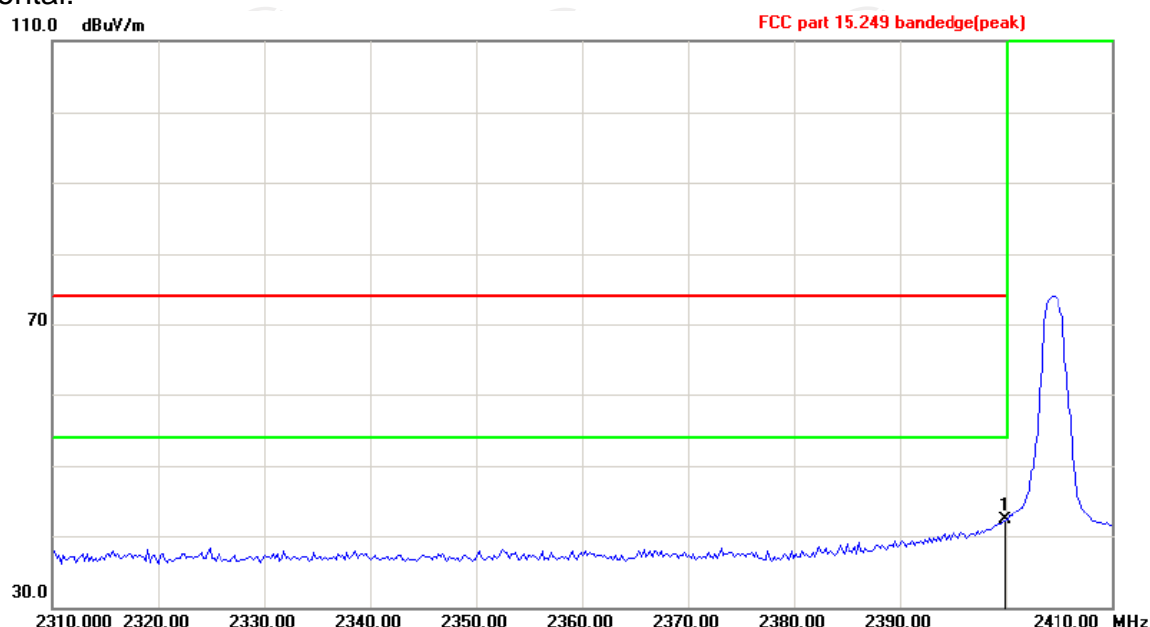
Note:

1. Emission Level=Peak Reading + Correction Factor; Correction Factor= Antenna Factor + Cable loss – Pre-amplifier
2. Margin (dB) = Emission Level (Peak) (dBμV/m)-Average limit (dBμV/m)
3. The emission levels of other frequencies are very lower than the limit and not show in test report.
4. Measurements were conducted from 1 GHz to the 10th harmonic of highest fundamental frequency.
5. Data of measurement shown “---“in the above table mean that the reading of emissions is attenuated more than 20 dB below the limits or the field strength is too small to be measured.
6. All the restriction bands are compliance with the limit of 15.209.

Band Edge Requirement

Lowest channel 2404:

Horizontal:



Site

Polarization: **Horizontal**

Temperature: 25

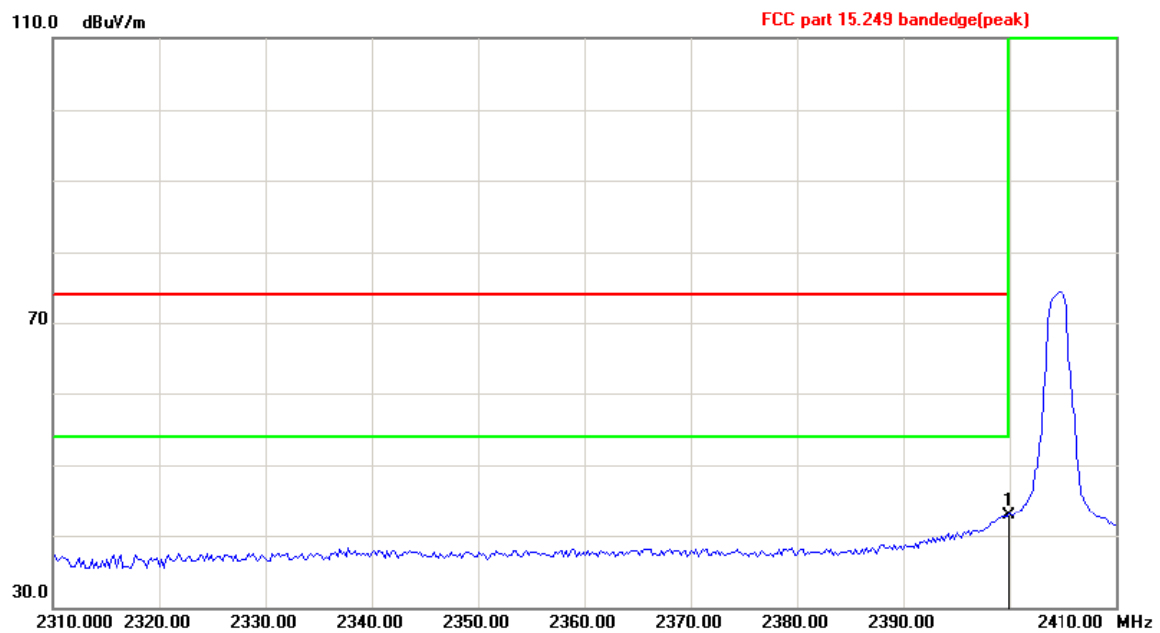
Limit: FCC part 15.249 bandedge(peak)

Power:

Humidity: 55 %

No.	Mk.	Freq. MHz	Reading Level dBuV	Correct Factor dB	Measure- ment dBuV/m	Limit dB/m	Over dB	Detector
1	*	2400.000	55.42	-13.02	42.40	74.00	-31.60	peak

Vertical:

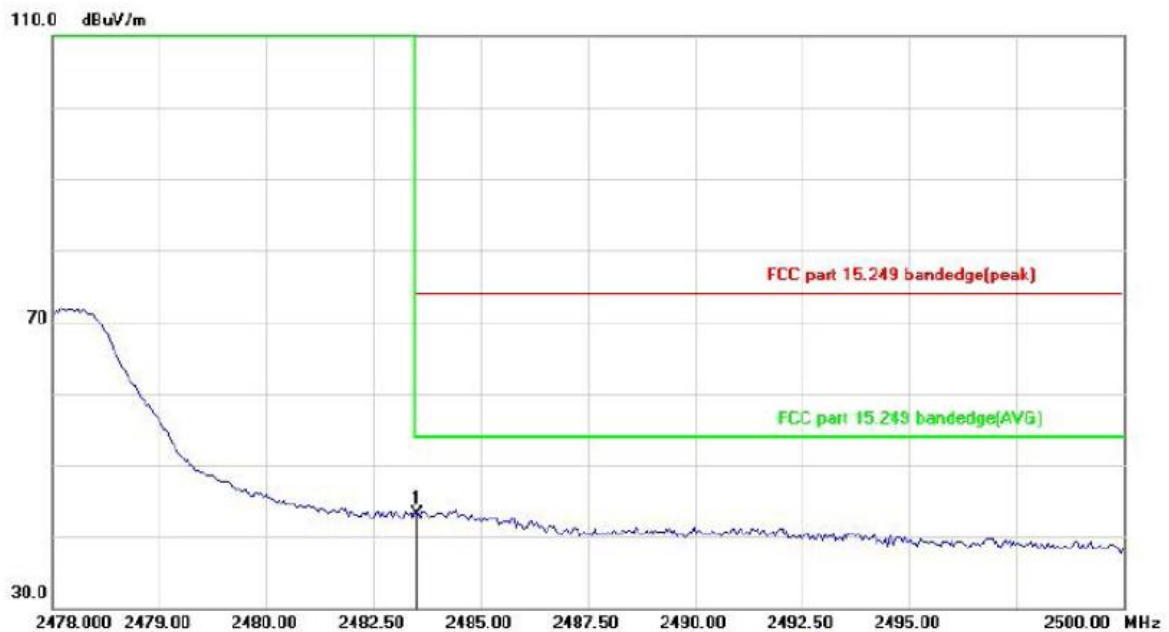


Site	Polarization: Vertical	Temperature: 25
Limit: FCC part 15.249 bandedge(peak)	Power:	Humidity: 55 %

No.	Mk.	Freq.	Reading Level	Correct Factor	Measurement	Limit	Over	
		MHz	dBuV	dB	dBuV/m	dB/m	dB	Detector
1	*	2400.000	55.92	-13.02	42.90	74.00	-31.10	peak

Highest channel 2478:

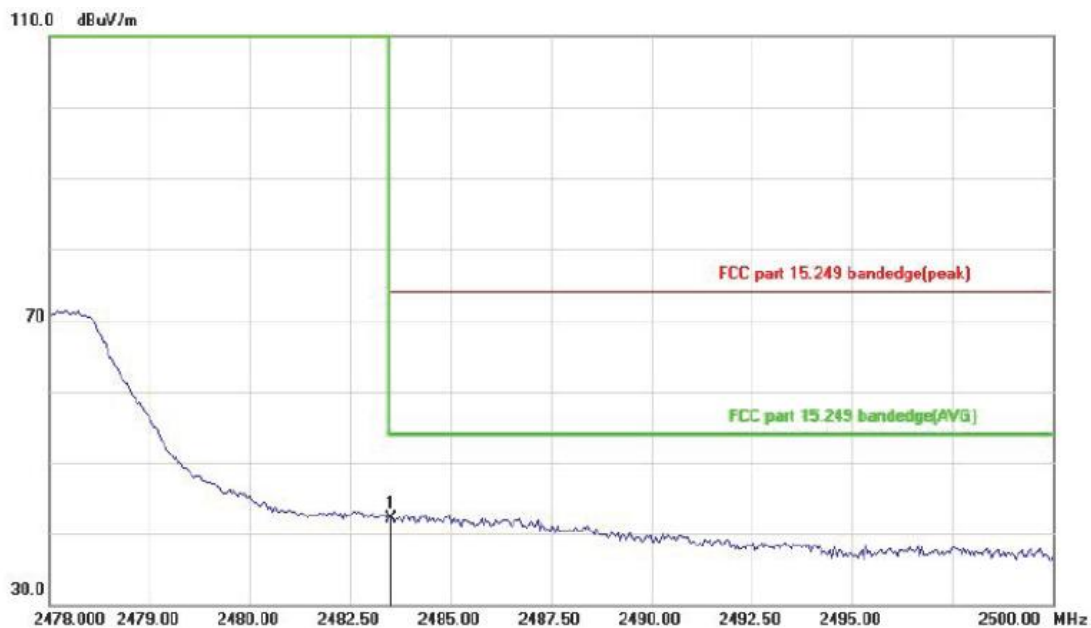
Horizontal:



Site: Polarization: **Horizontal** Temperature: 25
 Limit: FCC part 15.249 bandedge(peak) Power: Humidity: 55 %

No.	Mk.	Freq.	Reading Level	Correct Factor	Measurement	Limit	Over	
		MHz	dBuV	dB	dBuV/m	dB/m	dB	Detector
1	*	2483.500	55.87	-12.84	43.03	74.00	-30.97	peak

Vertical:




Site: Polarization: **Vertical** Temperature: 25
Limit: FCC part 15.249 bandedge(peak) Power: Humidity: 55 %

No.	Mk.	Freq.	Reading Level	Correct Factor	Measurement	Limit	Over
		MHz	dBuV	dB	dBuV/m	dB/m	dB
1	*	2483.500	54.87	-12.84	42.03	74.00	-31.97
							peak

Note: Measurements were conducted in all channels (high, middle, low), and the worst case (low high channel) was submitted only.

6.4. 20dB Occupied Bandwidth

6.4.1. Test Specification

Test Requirement:	FCC Part15 C Section 15.215(c)
Test Method:	ANSI C63.10: 2013
Limit:	N/A
	<ol style="list-style-type: none"> 1. According to the follow Test-setup, keep the relative position between the artificial antenna and the EUT. 2. Set to the maximum power setting and enable the EUT transmit continuously. 3. Use the following spectrum analyzer settings for 20dB Bandwidth measurement. Span = approximately 2 to 3 times the 20 dB bandwidth, centered on a hopping channel; RBW\geq1% of the 20 dB bandwidth; VBW\geqRBW; Sweep = auto; Detector function = peak; Trace = max hold. 4. Measure and record the results in the test report.
Test setup:	 <p>The diagram illustrates the test setup. On the left is a green Spectrum Analyzer with a screen and two knobs. A cable connects it to a yellow rectangular box on the right labeled 'EUT' (Equipment Under Test).</p>
Test Mode:	Transmitting mode with modulation
Test results:	PASS

6.4.2. Test Instruments

Equipment	Manufacturer	Model	Serial Number	Calibration Due
Spectrum Analyzer	R&S	FSU	200054	Sep. 11, 2021

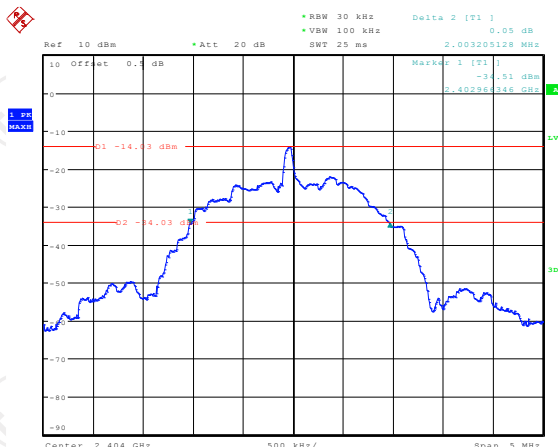
Note: The calibration interval of the above test instruments is 12 months and the calibrations are traceable to international system unit (SI).

6.4.3. Test data

Test Channel	20dB Occupy Bandwidth (kHz)	Limit	Conclusion
Lowest	2003.21	---	PASS
Middle	1979.17	---	PASS
Highest	2099.36	---	PASS

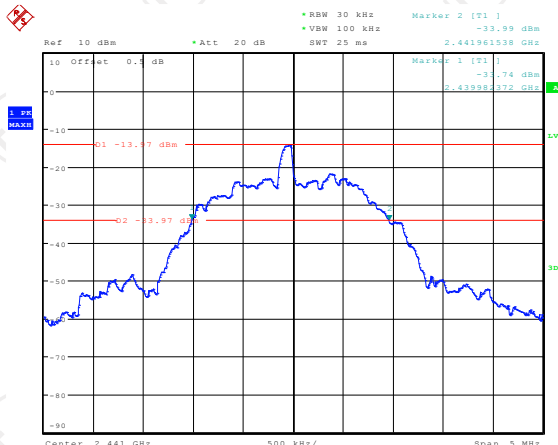
Test plots as follows:

Lowest channel



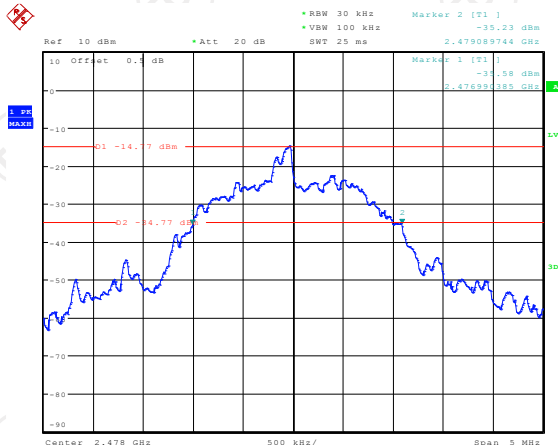
Date: 14.MAY.2021 14:42:15

Middle channel



Date: 14.MAY.2021 14:45:17

Highest channel



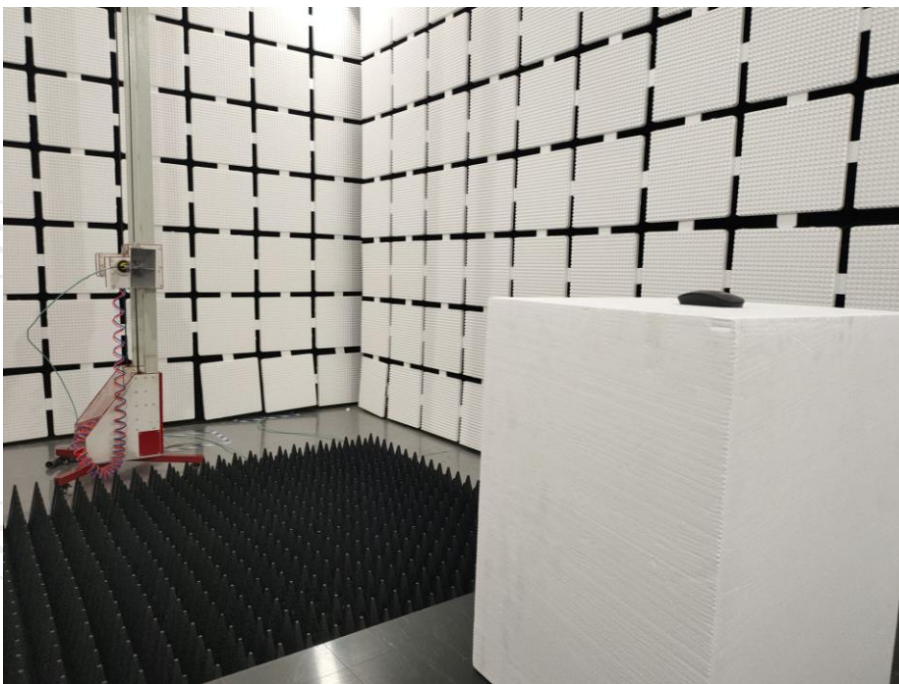
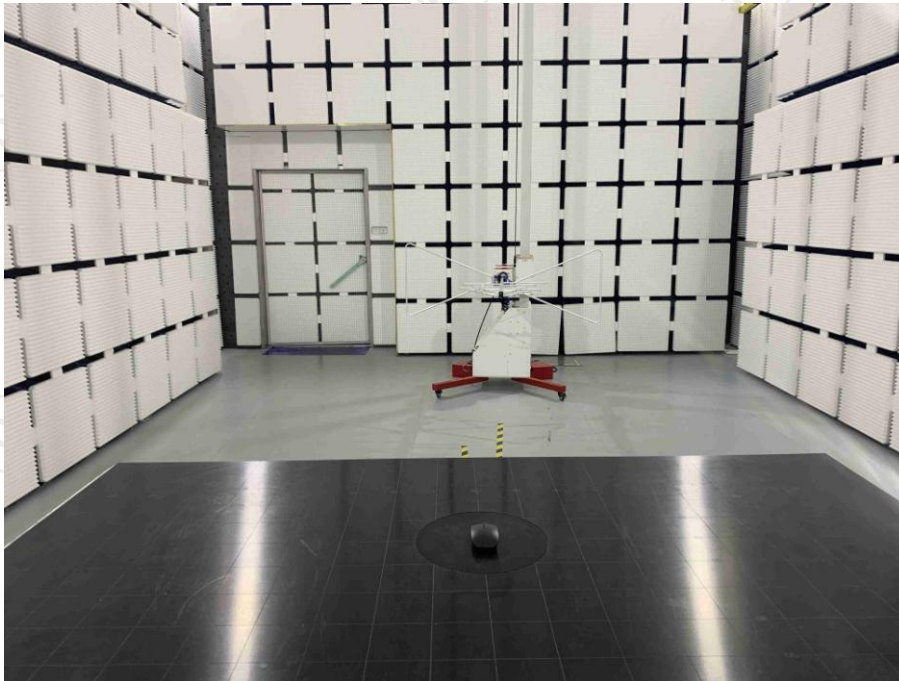
Date: 14.MAY.2021 14:46:24

Appendix A: Photographs of Test Setup

Product: Wireless Mouse

Model: A01

Radiated Emission

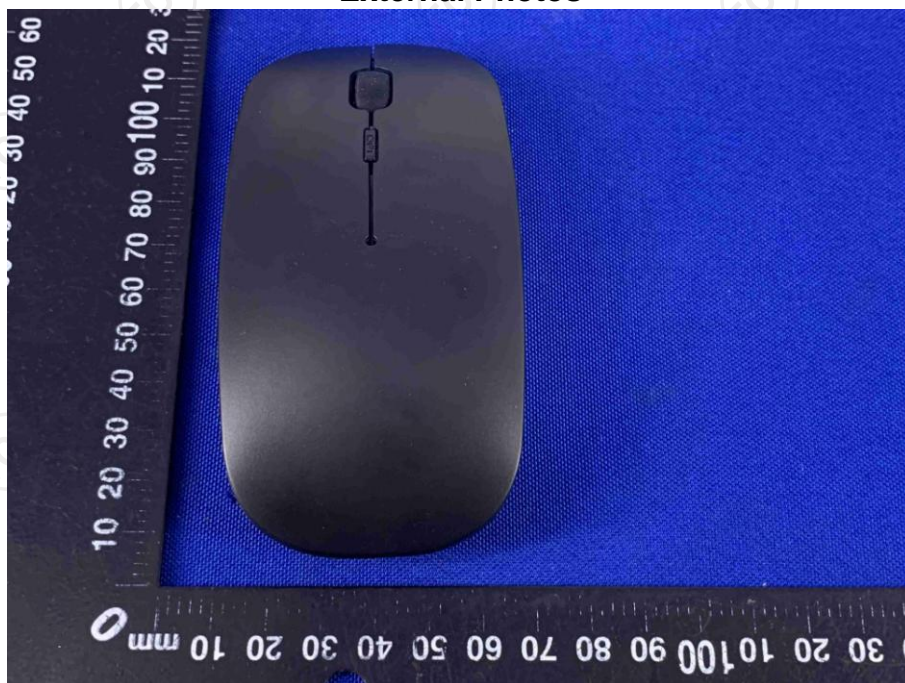


Appendix B: Photographs of EUT

Product: Wireless Mouse

Model: A01

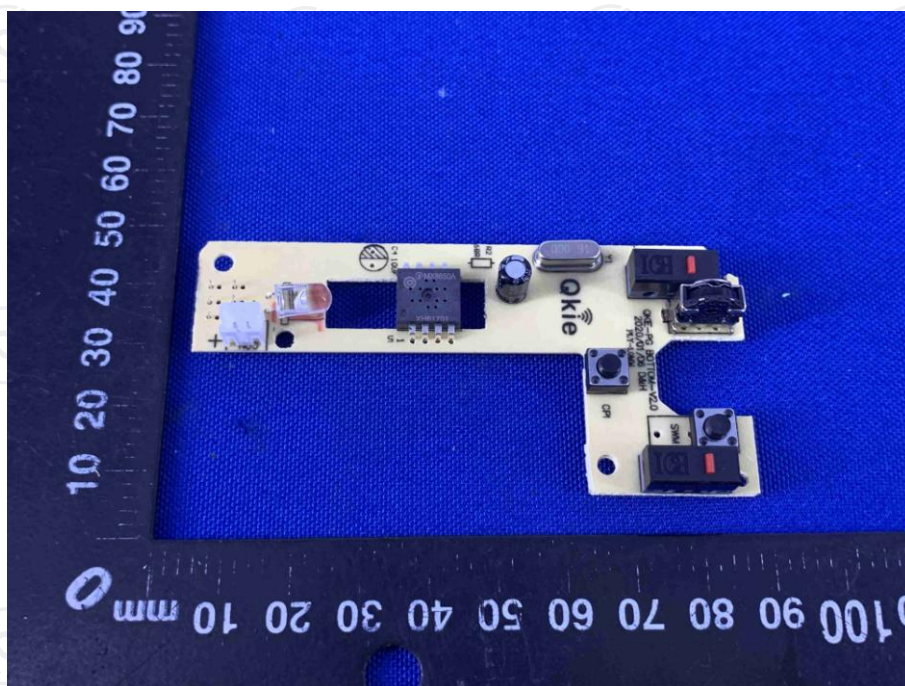
External Photos

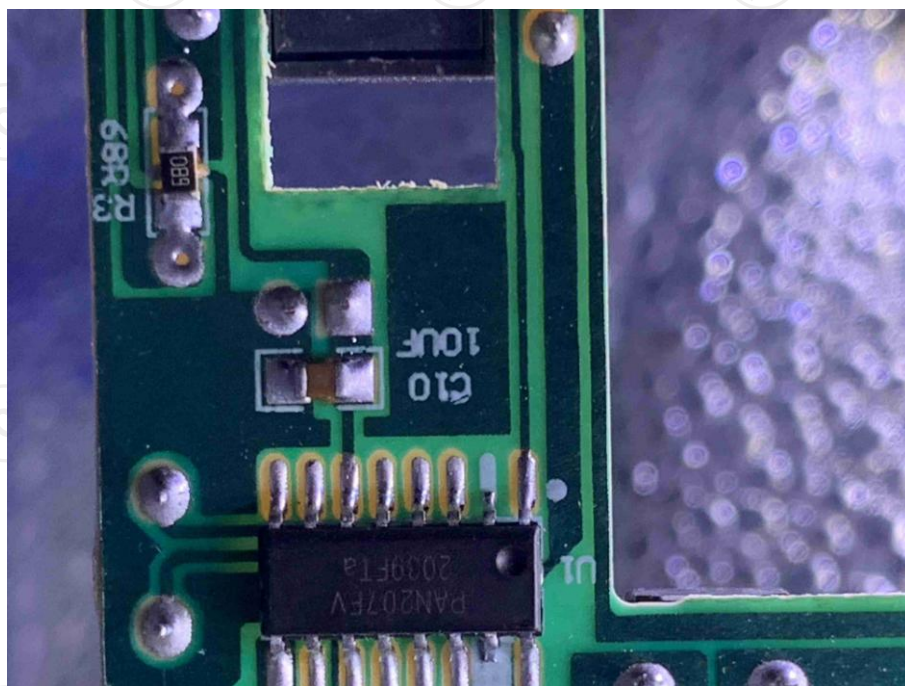
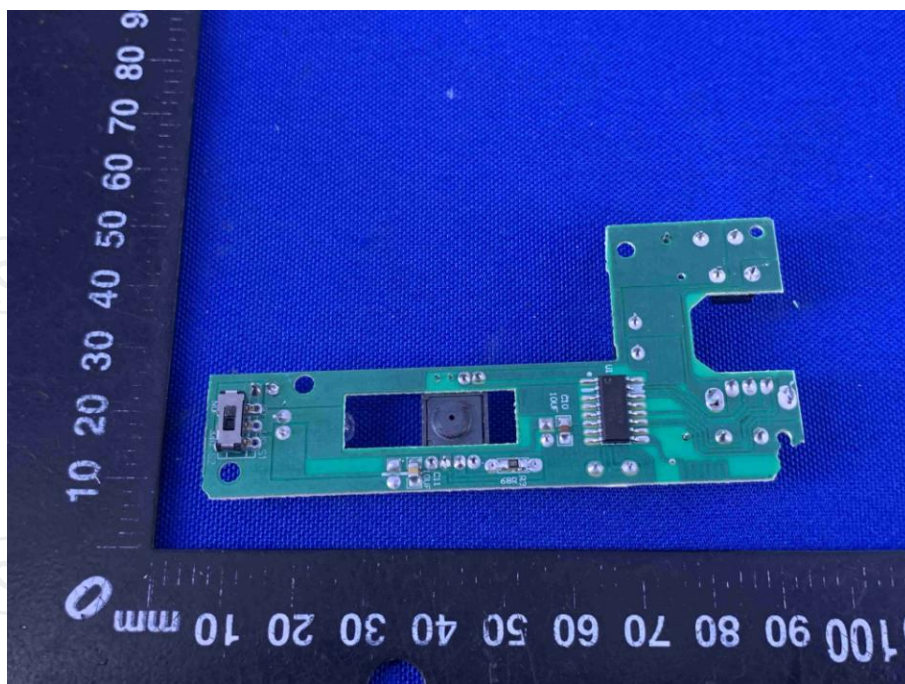












*****END OF REPORT*****