



FCC SAR TEST REPORT

FCC ID : 2AWRO-8767
Equipment : Wireless Tablet
Model Name : T76N2P
Applicant : Abyssal Plain LLC
CASTLE HILLS
1100 NW LOOP 410, SUITE 700,
SAN ANTONIO, TEXAS, 78213
Standard : FCC 47 CFR Part 2 (2.1093)

The product was received on Oct. 16, 2020 and testing was started from Oct. 30, 2020 and completed on Nov. 03, 2020. We, SPORTON INTERNATIONAL INC., would like to declare that the tested sample provide by manufacturer and the test data has been evaluated in accordance with the test procedures given in 47 CFR Part 2.1093 and FCC KDB and has been pass the FCC requirement.

The test results in this report apply exclusively to the tested model / sample. Without written approval of SPORTON INTERNATIONAL INC. EMC & Wireless Communications Laboratory, the test report shall not be reproduced except in full.



Approved by: Cona Huang / Deputy Manager

SPORTON INTERNATIONAL INC. EMC & Wireless Communications Laboratory
No. 52, Huaya 1st Rd., Guishan Dist., Taoyuan City, Taiwan (R.O.C.)

Table of Contents

1. Statement of Compliance	4
2. Guidance Applied.....	5
3. Equipment Under Test (EUT) Information.....	5
3.1 General Information	5
4. RF Exposure Limits.....	6
4.1 Uncontrolled Environment.....	6
4.2 Controlled Environment.....	6
5. Specific Absorption Rate (SAR).....	7
5.1 Introduction	7
5.2 SAR Definition.....	7
6. System Description and Setup	8
6.1 Test Site Location.....	8
6.2 E-Field Probe	9
6.3 Data Acquisition Electronics (DAE)	9
6.4 Phantom.....	10
6.5 Device Holder.....	11
7. Measurement Procedures	12
7.1 Spatial Peak SAR Evaluation.....	12
7.2 Power Reference Measurement.....	13
7.3 Area Scan	13
7.4 Zoom Scan.....	14
7.5 Volume Scan Procedures.....	14
7.6 Power Drift Monitoring.....	14
8. Test Equipment List.....	15
9. System Verification	16
9.1 Tissue Simulating Liquids.....	16
9.2 Tissue Verification	17
9.3 System Performance Check Results.....	18
10. RF Exposure Positions	18
10.1 SAR Testing for Tablet.....	18
11. Conducted RF Output Power (Unit: dBm).....	19
12. SAR test exclusion table	24
13. SAR Test Results	25
13.1 Body SAR	26
13.2 Repeated SAR Measurement	27
14. Simultaneous Transmission Analysis	28
14.1 Body Exposure Conditions	28
15. Uncertainty Assessment	29
16. References.....	29
Appendix A. Plots of System Performance Check	
Appendix B. Plots of High SAR Measurement	
Appendix C. DASY Calibration Certificate	
Appendix D. Test Setup Photos	

History of this test report

Report No.	Version	Description	Issued Date
FA072932-02	01	Initial issue of report	Nov. 19, 2020

1. Statement of Compliance

The maximum results of Specific Absorption Rate (SAR) found during testing for **Abyssal Plain LLC, Wireless Tablet, T76N2P**, are as follows.

Frequency Band		Highest SAR Summary	Highest Simultaneous Transmission 1g SAR (W/kg)
		Body (Separation 0mm)	
		1g SAR (W/kg)	
WLAN	2.4GHz WLAN	1.10	
	5GHz WLAN	0.99	1.18
2.4GHz Band	Bluetooth	0.19	1.18
Date of Testing:		2020/10/30 ~ 2020/11/3	

Sporton Lab is accredited to ISO 17025 by Taiwan Accreditation Foundation (TAF code: 1190) and the FCC designation No. TW1190 under the FCC 2.948(e) by Mutual Recognition Agreement (MRA) in FCC test. This device is in compliance with Specific Absorption Rate (SAR) for general population/uncontrolled exposure limits (1.6 W/kg for Partial-Body 1g SAR, 4.0 W/kg for Product Specific 10g SAR) specified in FCC 47 CFR part 2 (2.1093) and ANSI/IEEE C95.1-1992, and had been tested in accordance with the measurement methods and procedures specified in IEEE 1528-2013 and FCC KDB publications.

Reviewed by: Jason Wang
Report Producer: Paula Chen



2. Guidance Applied

The Specific Absorption Rate (SAR) testing specification, method, and procedure for this device is in accordance with the following standards:

- FCC 47 CFR Part 2 (2.1093)
- ANSI/IEEE C95.1-1992
- IEEE 1528-2013
- FCC KDB 865664 D01 SAR Measurement 100 MHz to 6 GHz v01r04
- FCC KDB 865664 D02 SAR Reporting v01r02
- FCC KDB 447498 D01 General RF Exposure Guidance v06
- FCC KDB 248227 D01 802.11 Wi-Fi SAR v02r02
- FCC KDB 616217 D04 SAR for laptop and tablets v01r02

3. Equipment Under Test (EUT) Information

3.1 General Information

Product Feature & Specification	
Equipment Name	Wireless Tablet
Model Name	T76N2P
FCC ID	2AWRO-8767
S / N	G001MG0203970S9M
Wireless Technology and Frequency Range	WLAN 2.4GHz Band: 2400 MHz ~ 2483.5 MHz WLAN 5.2GHz Band: 5150 MHz ~ 5250 MHz WLAN 5.3GHz Band: 5250 MHz ~ 5350 MHz WLAN 5.6GHz Band: 5470 MHz ~ 5725 MHz WLAN 5.8GHz Band: 5725 MHz ~ 5825 MHz Bluetooth: 2400 MHz ~ 2483.5 MHz
Mode	WLAN: 802.11a/b/g/n/ac HT20/HT40/VHT20/VHT40/VHT80 Bluetooth BR/EDR/LE

4. RF Exposure Limits

4.1 Uncontrolled Environment

Uncontrolled Environments are defined as locations where there is the exposure of individuals who have no knowledge or control of their exposure. The general population/uncontrolled exposure limits are applicable to situations in which the general public may be exposed or in which persons who are exposed as a consequence of their employment may not be made fully aware of the potential for exposure or cannot exercise control over their exposure. Members of the general public would come under this category when exposure is not employment-related; for example, in the case of a wireless transmitter that exposes persons in its vicinity.

4.2 Controlled Environment

Controlled Environments are defined as locations where there is exposure that may be incurred by persons who are aware of the potential for exposure, (i.e. as a result of employment or occupation). In general, occupational/controlled exposure limits are applicable to situations in which persons are exposed as a consequence of their employment, who have been made fully aware of the potential for exposure and can exercise control over their exposure. The exposure category is also applicable when the exposure is of a transient nature due to incidental passage through a location where the exposure levels may be higher than the general population/uncontrolled limits, but the exposed person is fully aware of the potential for exposure and can exercise control over his or her exposure by leaving the area or by some other appropriate means.

Limits for Occupational/Controlled Exposure (W/kg)

Whole-Body	Partial-Body	Hands, Wrists, Feet and Ankles
0.4	8.0	20.0

Limits for General Population/Uncontrolled Exposure (W/kg)

Whole-Body	Partial-Body	Hands, Wrists, Feet and Ankles
0.08	1.6	4.0

1. Whole-Body SAR is averaged over the entire body, partial-body SAR is averaged over any 1gram of tissue defined as a tissue volume in the shape of a cube. SAR for hands, wrists, feet and ankles is averaged over any 10 grams of tissue defined as a tissue volume in the shape of a cube.

5. Specific Absorption Rate (SAR)

5.1 Introduction

SAR is related to the rate at which energy is absorbed per unit mass in an object exposed to a radio field. The SAR distribution in a biological body is complicated and is usually carried out by experimental techniques or numerical modeling. The standard recommends limits for two tiers of groups, occupational/controlled and general population/uncontrolled, based on a person's awareness and ability to exercise control over his or her exposure. In general, occupational/controlled exposure limits are higher than the limits for general population/uncontrolled.

5.2 SAR Definition

The SAR definition is the time derivative (rate) of the incremental energy (dW) absorbed by (dissipated in) an incremental mass (dm) contained in a volume element (dv) of a given density (ρ). The equation description is as below:

$$SAR = \frac{d}{dt} \left(\frac{dW}{dm} \right) = \frac{d}{dt} \left(\frac{dW}{\rho dv} \right)$$

SAR is expressed in units of Watts per kilogram (W/kg)

$$SAR = \frac{\sigma |E|^2}{\rho}$$

Where: σ is the conductivity of the tissue, ρ is the mass density of the tissue and E is the RMS electrical field strength.

6. System Description and Setup

The DASY system used for performing compliance tests consists of the following items:



- A standard high precision 6-axis robot with controller, teach pendant and software. An arm extension for accommodating the data acquisition electronics (DAE).
- An isotropic Field probe optimized and calibrated for the targeted measurement.
- A data acquisition electronics (DAE) which performs the signal amplification, signal multiplexing, AD-conversion, offset measurements, mechanical surface detection, collision detection, etc. The unit is battery powered with standard or rechargeable batteries. The signal is optically transmitted to the EOC.
- The Electro-optical converter (EOC) performs the conversion from optical to electrical signals for the digital communication to the DAE. To use optical surface detection, a special version of the EOC is required. The EOC signal is transmitted to the measurement server.
- The function of the measurement server is to perform the time critical tasks such as signal filtering, control of the robot operation and fast movement interrupts.
- The Light Beam used is for probe alignment. This improves the (absolute) accuracy of the probe positioning.
- A computer running WinXP or Win7 and the DASY5 software.
- Remote control and teach pendant as well as additional circuitry for robot safety such as warning lamps, etc.
- The phantom, the device holder and other accessories according to the targeted measurement.

6.1 Test Site Location


The SAR measurement facilities used to collect data are within Sporton Lab and below test site location are accredited to ISO 17025 by Taiwan Accreditation Foundation (TAF code: 1190 and 0007) and the FCC designation No. TW1190 and TW0007 under the FCC 2.948(e) by Mutual Recognition Agreement (MRA) in FCC test.

Test Site	SPORTON INTERNATIONAL INC. EMC & Wireless Communications Laboratory			
Test Site Location	TW1190 No. 52, Huaya 1st Rd., Guishan Dist., Taoyuan City 333, CHINESE TAIPEI		TW0007 No. 58, Aly. 75, Ln. 564, Wehnuia 3rd, Rd., Guishan Dist., Taoyuan City, CHINESE TAIPEI	
Test Site No.	SAR01-HY	SAR03-HY	SAR08-HY	SAR09-HY
	SAR04-HY	SAR05-HY	SAR11-HY	SAR12-HY
	SAR06-HY	SAR10-HY		


6.2 E-Field Probe

The SAR measurement is conducted with the dosimetric probe (manufactured by SPEAG). The probe is specially designed and calibrated for use in liquid with high permittivity. The dosimetric probe has special calibration in liquid at different frequency. This probe has a built in optical surface detection system to prevent from collision with phantom.

<ES3DV3 Probe>

Construction	Symmetric design with triangular core Interleaved sensors Built-in shielding against static charges PEEK enclosure material (resistant to organic solvents, e.g., DGBE)	
Frequency	10 MHz – 4 GHz; Linearity: ± 0.2 dB (30 MHz – 4 GHz)	
Directivity	± 0.2 dB in TSL (rotation around probe axis) ± 0.3 dB in TSL (rotation normal to probe axis)	
Dynamic Range	5 μ W/g – >100 mW/g; Linearity: ± 0.2 dB	
Dimensions	Overall length: 337 mm (tip: 20 mm) Tip diameter: 3.9 mm (body: 12 mm) Distance from probe tip to dipole centers: 3.0 mm	

<EX3DV4 Probe>

Construction	Symmetric design with triangular core Built-in shielding against static charges PEEK enclosure material (resistant to organic solvents, e.g., DGBE)	
Frequency	10 MHz – >6 GHz Linearity: ± 0.2 dB (30 MHz – 6 GHz)	
Directivity	± 0.3 dB in TSL (rotation around probe axis) ± 0.5 dB in TSL (rotation normal to probe axis)	
Dynamic Range	10 μ W/g – >100 mW/g Linearity: ± 0.2 dB (noise: typically <1 μ W/g)	
Dimensions	Overall length: 337 mm (tip: 20 mm) Tip diameter: 2.5 mm (body: 12 mm) Typical distance from probe tip to dipole centers: 1 mm	

6.3 Data Acquisition Electronics (DAE)

The data acquisition electronics (DAE) consists of a highly sensitive electrometer-grade preamplifier with auto-zeroing, a channel and gain-switching multiplexer, a fast 16 bit AD-converter and a command decoder and control logic unit. Transmission to the measurement server is accomplished through an optical downlink for data and status information as well as an optical uplink for commands and the clock.


The input impedance of the DAE is 200 MOhm; the inputs are symmetrical and floating. Common mode rejection is above 80 dB.



Fig 5.1 Photo of DAE


6.4 Phantom

<SAM Twin Phantom>

Shell Thickness	2 ± 0.2 mm; Center ear point: 6 ± 0.2 mm	
Filling Volume	Approx. 25 liters	
Dimensions	Length: 1000 mm; Width: 500 mm; Height: adjustable feet	
Measurement Areas	Left Hand, Right Hand, Flat Phantom	

The bottom plate contains three pair of bolts for locking the device holder. The device holder positions are adjusted to the standard measurement positions in the three sections. A white cover is provided to tap the phantom during off-periods to prevent water evaporation and changes in the liquid parameters. On the phantom top, three reference markers are provided to identify the phantom position with respect to the robot.

<ELI Phantom>

Shell Thickness	2 ± 0.2 mm (sagging: <1%)	
Filling Volume	Approx. 30 liters	
Dimensions	Major ellipse axis: 600 mm Minor axis: 400 mm	

The ELI phantom is intended for compliance testing of handheld and body-mounted wireless devices in the frequency range of 30 MHz to 6 GHz. ELI4 is fully compatible with standard and all known tissue simulating liquids.

6.5 Device Holder

<Mounting Device for Hand-Held Transmitter>

In combination with the Twin SAM V5.0/V5.0c or ELI phantoms, the Mounting Device for Hand-Held Transmitters enables rotation of the mounted transmitter device to specified spherical coordinates. At the heads, the rotation axis is at the ear opening. Transmitter devices can be easily and accurately positioned according to IEC 62209-1, IEEE 1528, FCC, or other specifications. The device holder can be locked for positioning at different phantom sections (left head, right head, flat). And upgrade kit to Mounting Device to enable easy mounting of wider devices like big smart-phones, e-books, small tablets, etc. It holds devices with width up to 140 mm.



Mounting Device for Hand-Held Transmitters



Mounting Device Adaptor for Wide-Phones

<Mounting Device for Laptops and other Body-Worn Transmitters>

The extension is lightweight and made of POM, acrylic glass and foam. It fits easily on the upper part of the mounting device in place of the phone positioned. The extension is fully compatible with the SAM Twin and ELI phantoms.



Mounting Device for Laptops

7. Measurement Procedures

The measurement procedures are as follows:

<Conducted power measurement>

- (a) For WWAN power measurement, use base station simulator to configure EUT WWAN transmission in conducted connection with RF cable, at maximum power in each supported wireless interface and frequency band.
- (b) Read the WWAN RF power level from the base station simulator.
- (c) For WLAN/BT power measurement, use engineering software to configure EUT WLAN/BT continuously transmission, at maximum RF power in each supported wireless interface and frequency band
- (d) Connect EUT RF port through RF cable to the power meter, and measure WLAN/BT output power

<SAR measurement>

- (a) Use base station simulator to configure EUT WWAN transmission in radiated connection, and engineering software to configure EUT WLAN/BT continuously transmission, at maximum RF power, in the highest power channel.
- (b) Place the EUT in the positions as Appendix D demonstrates.
- (c) Set scan area, grid size and other setting on the DASY software.
- (d) Measure SAR results for the highest power channel on each testing position.
- (e) Find out the largest SAR result on these testing positions of each band
- (f) Measure SAR results for other channels in worst SAR testing position if the reported SAR of highest power channel is larger than 0.8 W/kg

According to the test standard, the recommended procedure for assessing the peak spatial-average SAR value consists of the following steps:

- (a) Power reference measurement
- (b) Area scan
- (c) Zoom scan
- (d) Power drift measurement

7.1 Spatial Peak SAR Evaluation

The procedure for spatial peak SAR evaluation has been implemented according to the test standard. It can be conducted for 1g and 10g, as well as for user-specific masses. The DASY software includes all numerical procedures necessary to evaluate the spatial peak SAR value.

The base for the evaluation is a "cube" measurement. The measured volume must include the 1g and 10g cubes with the highest averaged SAR values. For that purpose, the center of the measured volume is aligned to the interpolated peak SAR value of a previously performed area scan.

The entire evaluation of the spatial peak values is performed within the post-processing engine (SEMCAD). The system always gives the maximum values for the 1g and 10g cubes. The algorithm to find the cube with highest averaged SAR is divided into the following stages:

- (a) Extraction of the measured data (grid and values) from the Zoom Scan
- (b) Calculation of the SAR value at every measurement point based on all stored data (A/D values and measurement parameters)
- (c) Generation of a high-resolution mesh within the measured volume
- (d) Interpolation of all measured values from the measurement grid to the high-resolution grid
- (e) Extrapolation of the entire 3-D field distribution to the phantom surface over the distance from sensor to surface
- (f) Calculation of the averaged SAR within masses of 1g and 10g

7.2 Power Reference Measurement

The Power Reference Measurement and Power Drift Measurements are for monitoring the power drift of the device under test in the batch process. The minimum distance of probe sensors to surface determines the closest measurement point to phantom surface. This distance cannot be smaller than the distance of sensor calibration points to probe tip as defined in the probe properties.

7.3 Area Scan

The area scan is used as a fast scan in two dimensions to find the area of high field values, before doing a fine measurement around the hot spot. The sophisticated interpolation routines implemented in DASY software can find the maximum found in the scanned area, within a range of the global maximum. The range (in dB0) is specified in the standards for compliance testing. For example, a 2 dB range is required in IEEE standard 1528 and IEC 62209 standards, whereby 3 dB is a requirement when compliance is assessed in accordance with the ARIB standard (Japan), if only one zoom scan follows the area scan, then only the absolute maximum will be taken as reference. For cases where multiple maximums are detected, the number of zoom scans has to be increased accordingly.

Area scan parameters extracted from FCC KDB 865664 D01v01r04 SAR measurement 100 MHz to 6 GHz.

	≤ 3 GHz	> 3 GHz
Maximum distance from closest measurement point (geometric center of probe sensors) to phantom surface	5 ± 1 mm	$\frac{1}{2} \cdot \delta \cdot \ln(2) \pm 0.5$ mm
Maximum probe angle from probe axis to phantom surface normal at the measurement location	$30^\circ \pm 1^\circ$	$20^\circ \pm 1^\circ$
Maximum area scan spatial resolution: Δx_{Area} , Δy_{Area}	≤ 2 GHz: ≤ 15 mm $2 - 3$ GHz: ≤ 12 mm	$3 - 4$ GHz: ≤ 12 mm $4 - 6$ GHz: ≤ 10 mm
	When the x or y dimension of the test device, in the measurement plane orientation, is smaller than the above, the measurement resolution must be \leq the corresponding x or y dimension of the test device with at least one measurement point on the test device.	

7.4 Zoom Scan

Zoom scans are used to assess the peak spatial SAR values within a cubic averaging volume containing 1 gram and 10 gram of simulated tissue. The zoom scan measures points (refer to table below) within a cube whose base faces are centered on the maxima found in a preceding area scan job within the same procedure. When the measurement is done, the zoom scan evaluates the averaged SAR for 1 gram and 10 gram and displays these values next to the job's label.

Zoom scan parameters extracted from FCC KDB 865664 D01v01r04 SAR measurement 100 MHz to 6 GHz.

			≤ 3 GHz	> 3 GHz
Maximum zoom scan spatial resolution: $\Delta x_{\text{Zoom}}, \Delta y_{\text{Zoom}}$			≤ 2 GHz: ≤ 8 mm 2 – 3 GHz: ≤ 5 mm*	3 – 4 GHz: ≤ 5 mm* 4 – 6 GHz: ≤ 4 mm*
Maximum zoom scan spatial resolution, normal to phantom surface	uniform grid: $\Delta z_{\text{Zoom}}(n)$		≤ 5 mm	3 – 4 GHz: ≤ 4 mm 4 – 5 GHz: ≤ 3 mm 5 – 6 GHz: ≤ 2 mm
	graded grid	$\Delta z_{\text{Zoom}}(1)$: between 1 st two points closest to phantom surface	≤ 4 mm	3 – 4 GHz: ≤ 3 mm 4 – 5 GHz: ≤ 2.5 mm 5 – 6 GHz: ≤ 2 mm
		$\Delta z_{\text{Zoom}}(n>1)$: between subsequent points	$\leq 1.5 \cdot \Delta z_{\text{Zoom}}(n-1)$	
Minimum zoom scan volume	x, y, z		≥ 30 mm	3 – 4 GHz: ≥ 28 mm 4 – 5 GHz: ≥ 25 mm 5 – 6 GHz: ≥ 22 mm
Note: δ is the penetration depth of a plane-wave at normal incidence to the tissue medium; see draft standard IEEE P1528-2011 for details.				
* When zoom scan is required and the <i>reported</i> SAR from the <i>area scan based 1-g SAR estimation</i> procedures of KDB 447498 is ≤ 1.4 W/kg, ≤ 8 mm, ≤ 7 mm and ≤ 5 mm zoom scan resolution may be applied, respectively, for 2 GHz to 3 GHz, 3 GHz to 4 GHz and 4 GHz to 6 GHz.				

7.5 Volume Scan Procedures

The volume scan is used to assess overlapping SAR distributions for antennas transmitting in different frequency bands. It is equivalent to an oversized zoom scan used in standalone measurements. The measurement volume will be used to enclose all the simultaneous transmitting antennas. For antennas transmitting simultaneously in different frequency bands, the volume scan is measured separately in each frequency band. In order to sum correctly to compute the 1g aggregate SAR, the EUT remain in the same test position for all measurements and all volume scan use the same spatial resolution and grid spacing. When all volume scan were completed, the software, SEMCAD postprocessor can combine and subsequently superpose these measurement data to calculating the multiband SAR.

7.6 Power Drift Monitoring

All SAR testing is under the EUT install full charged battery and transmit maximum output power. In DASy measurement software, the power reference measurement and power drift measurement procedures are used for monitoring the power drift of EUT during SAR test. Both these procedures measure the field at a specified reference position before and after the SAR testing. The software will calculate the field difference in dB. If the power drifts more than 5%, the SAR will be retested.

8. Test Equipment List

Manufacturer	Name of Equipment	Type/Model	Serial Number	Calibration	
				Last Cal.	Due Date
SPEAG	2450MHz System Validation Kit ⁽²⁾	D2450V2	736	Aug. 31, 2018	Aug. 28, 2021
SPEAG	5GHz System Validation Kit ⁽²⁾	D5GHzV2	1006	Sep. 27, 2018	Sep. 24, 2021
SPEAG	Data Acquisition Electronics	DAE4	778	Jun. 04, 2020	Jun. 03, 2021
SPEAG	Data Acquisition Electronics	DAE4	853	Jul. 23, 2020	Jul. 22, 2021
SPEAG	Data Acquisition Electronics	DAE4	1311	Aug. 25, 2020	Aug. 24, 2021
SPEAG	Dosimetric E-Field Probe	EX3DV4	3642	Apr. 29, 2020	Apr. 28, 2021
SPEAG	Dosimetric E-Field Probe	EX3DV4	3753	Jun. 25, 2020	Jun. 24, 2021
SPEAG	Dosimetric E-Field Probe	EX3DV4	7346	May. 20, 2020	May. 19, 2021
SPEAG	Dosimetric E-Field Probe	EX3DV4	7590	Apr. 14, 2020	Apr. 13, 2021
RCPTWN	Thermometer	HTC-1	TM685-1	Nov. 12, 2019	Nov. 11, 2020
RCPTWN	Thermometer	HTC-1	TM560-2	Nov. 12, 2019	Nov. 11, 2020
R&S	BT Base Station	CBT	100815	Feb. 15, 2020	Feb. 14, 2021
SPEAG	Device Holder	N/A	N/A	N/A	N/A
Anritsu	Signal Generator	MG3710A	6201502524	Nov. 20, 2019	Nov. 19, 2020
Keysight	ENA Network Analyzer	E5071C	MY46101588	Jun. 10, 2020	Jun. 09, 2021
SPEAG	Dielectric Probe Kit	DAK-3.5	1126	Sep. 16, 2020	Sep. 15, 2021
LINE SEIKI	Digital Thermometer	DTM3000-spezial	2942	Nov. 18, 2019	Nov. 17, 2020
Anritsu	Power Meter	ML2495A	1419002	Aug. 19, 2020	Aug. 18, 2021
Anritsu	Power Sensor	MA2411B	1911176	Aug. 18, 2020	Aug. 17, 2021
Anritsu	Power Meter	ML2495A	1804003	Oct. 21, 2020	Oct. 20, 2021
Anritsu	Power Sensor	MA2411B	1726150	Oct. 21, 2020	Oct. 20, 2021
Anritsu	Spectrum Analyzer	MS2830A	6201396378	Jun. 30, 2020	Jun. 29, 2021
Anritsu	Spectrum Analyzer	N9010A	MY53470118	Mar. 12, 2020	Mar. 11, 2021
Mini-Circuits	Power Amplifier	ZVE-8G+	6418	Oct. 21, 2020	Oct. 20, 2021
Mini-Circuits	Power Amplifier	ZVE-8G+	479102029	Aug. 26, 2020	Aug. 25, 2021
ATM	Dual Directional Coupler	C122H-10	P610410z-02	Note 1	
Woken	Attenuator 1	WK0602-XX	N/A	Note 1	
PE	Attenuator 2	PE7005-10	N/A	Note 1	
PE	Attenuator 3	PE7005- 3	N/A	Note 1	

General Note:

1. Prior to system verification and validation, the path loss from the signal generator to the system check source and the power meter, which includes the amplifier, cable, attenuator and directional coupler, was measured by the network analyzer. The reading of the power meter was offset by the path loss difference between the path to the power meter and the path to the system check source to monitor the actual power level fed to the system check source.
2. The dipole calibration interval can be extended to 3 years with justification according to KDB 865664 D01. The dipoles are also not physically damaged, or repaired during the interval. The justification data in appendix C can be found which the return loss is < -20dB, within 20% of prior calibration, the impedance is within 5 ohm of prior calibration for each dipole.

9. System Verification

9.1 Tissue Simulating Liquids

For the measurement of the field distribution inside the SAM phantom with DASY, the phantom must be filled with around 25 liters of homogeneous body tissue simulating liquid. For head SAR testing, the liquid height from the ear reference point (ERP) of the phantom to the liquid top surface is larger than 15 cm, which is shown in Fig. 10.1. For body SAR testing, the liquid height from the center of the flat phantom to the liquid top surface is larger than 15 cm, which is shown in Fig. 10.2.

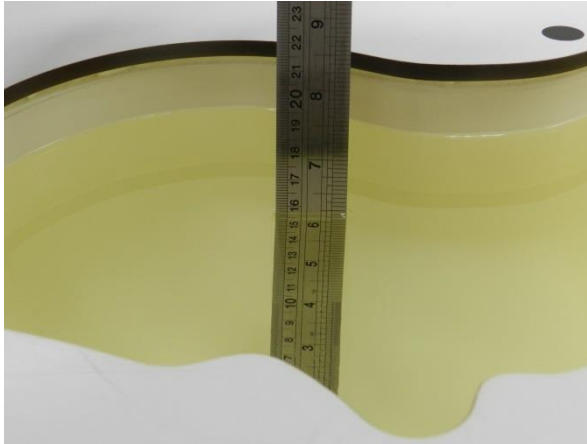


Fig 10.1 Photo of Liquid Height for Head SAR

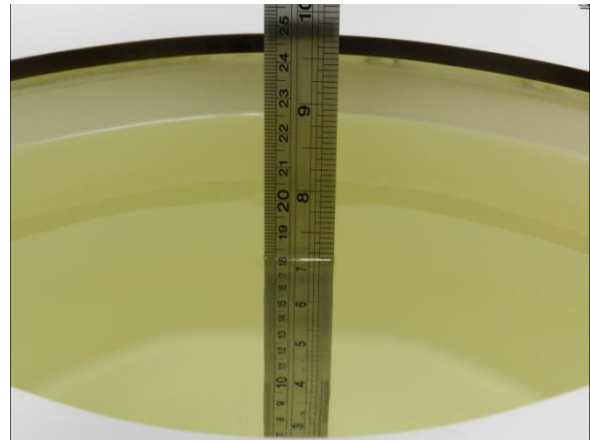


Fig 10.2 Photo of Liquid Height for Body SAR

9.2 Tissue Verification

The following tissue formulations are provided for reference only as some of the parameters have not been thoroughly verified. The composition of ingredients may be modified accordingly to achieve the desired target tissue parameters required for routine SAR evaluation.

Frequency (MHz)	Water (%)	Sugar (%)	Cellulose (%)	Salt (%)	Preventol (%)	DGBE (%)	Conductivity (σ)	Permittivity (ϵ_r)
750	41.1	57.0	0.2	1.4	0.2	0	0.89	41.9
835	40.3	57.9	0.2	1.4	0.2	0	0.90	41.5
900	40.3	57.9	0.2	1.4	0.2	0	0.97	41.5
1800, 1900, 2000	55.2	0	0	0.3	0	44.5	1.40	40.0
2450	55.0	0	0	0	0	45.0	1.80	39.2
2600	54.8	0	0	0.1	0	45.1	1.96	39.0

Simulating Liquid for 5GHz, Manufactured by SPEAG

Ingredients	(% by weight)
Water	64~78%
Mineral oil	11~18%
Emulsifiers	9~15%
Additives and Salt	2~3%

<Tissue Dielectric Parameter Check Results>

Frequency (MHz)	Liquid Temp. (°C)	Conductivity (σ)	Permittivity (ϵ_r)	Conductivity Target (σ)	Permittivity Target (ϵ_r)	Delta (σ) (%)	Delta (ϵ_r) (%)	Limit (%)	Date
2450	22.6	1.794	39.046	1.80	39.20	-0.33	-0.39	±5	2020/11/2
2450	22.5	1.819	39.836	1.80	39.20	1.06	1.62	±5	2020/11/3
5250	22.6	4.781	36.389	4.71	35.95	1.51	1.22	±5	2020/10/30
5250	22.6	4.752	36.289	4.71	35.95	0.89	0.94	±5	2020/11/2
5600	22.6	5.149	35.841	5.07	35.50	1.56	0.96	±5	2020/10/30
5750	22.6	5.315	35.624	5.22	35.35	1.82	0.78	±5	2020/10/30

9.3 System Performance Check Results

Comparing to the original SAR value provided by SPEAG, the verification data should be within its specification of 10 %. Below table shows the target SAR and measured SAR after normalized to 1W input power. The table below indicates the system performance check can meet the variation criterion and the plots can be referred to Appendix A of this report.

Date	Frequency (MHz)	Input Power (mW)	Dipole S/N	Probe S/N	DAE S/N	Measured 1g SAR (W/kg)	Targeted 1g SAR (W/kg)	Normalized 1g SAR (W/kg)	Deviation (%)
2020/11/2	2450	250	D2450V2-736	EX3DV4 - SN7346	DAE4 Sn853	12.50	52.70	50	-5.12
2020/11/3	2450	50	D2450V2-736	EX3DV4 - SN3753	DAE4 Sn778	2.71	52.70	54.2	2.85
2020/10/30	5250	100	D5GHzV2-1006-5250	EX3DV4 - SN3642	DAE4 Sn1311	8.70	80.70	87	7.81
2020/11/2	5250	50	D5GHzV2-1006-5250	EX3DV4 - SN7590	DAE4 Sn1311	3.77	80.70	75.4	-6.57
2020/10/30	5600	100	D5GHzV2-1006-5600	EX3DV4 - SN3642	DAE4 Sn1311	8.54	83.30	85.4	2.52
2020/10/30	5750	100	D5GHzV2-1006-5750	EX3DV4 - SN3642	DAE4 Sn1311	7.94	80.40	79.4	-1.24

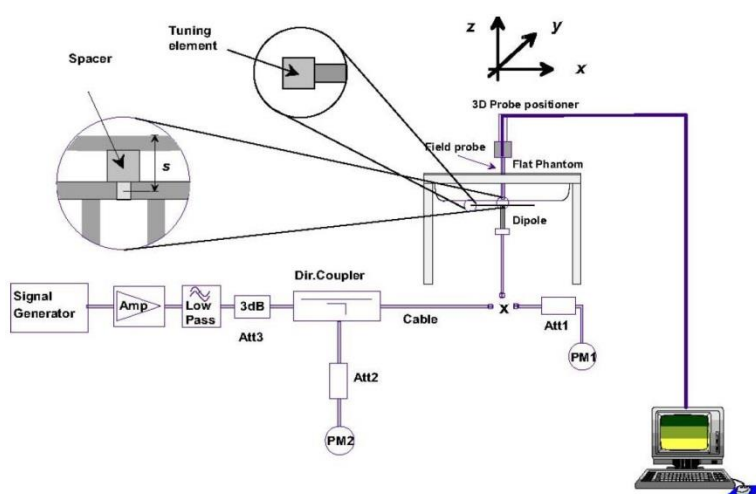


Fig 8.3.1 System Performance Check Setup



Fig 8.3.2 Setup Photo

10. RF Exposure Positions

10.1 SAR Testing for Tablet

This device can be used also in full sized tablet exposure conditions, due to its size. Per FCC KDB 616217, the back surface and edges of the tablet should be tested for SAR compliance with the tablet touching the phantom. The SAR exclusion threshold in KDB 447498 D01v06 can be applied to determine SAR test exclusion for adjacent edge configurations. The closest distance from the antenna to an adjacent tablet edge is used to determine if SAR testing is required for the adjacent edges, with the adjacent edge positioned against the phantom and the edge containing the antenna positioned perpendicular to the phantom.

11. Conducted RF Output Power (Unit: dBm)

<WLAN Conducted Power>

General Note:

1. Per KDB 248227 D01v02r02, SAR test reduction is determined according to 802.11 transmission mode configurations and certain exposure conditions with multiple test positions. In the 2.4 GHz band, separate SAR procedures are applied to DSSS and OFDM configurations to simplify DSSS test requirements. For OFDM, in both 2.4 and 5 GHz bands, an initial test configuration must be determined for each standalone and aggregated frequency band, according to the transmission mode configuration with the highest maximum output power specified for production units to perform SAR measurements. If the same highest maximum output power applies to different combinations of channel bandwidths, modulations and data rates, additional procedures are applied to determine which test configurations require SAR measurement. When applicable, an initial test position may be applied to reduce the number of SAR measurements required for next to the ear, UMPC mini-tablet or hotspot mode configurations with multiple test positions.
2. For 2.4 GHz 802.11b DSSS, either the initial test position procedure for multiple exposure test positions or the DSSS procedure for fixed exposure position is applied; these are mutually exclusive. For 2.4 GHz and 5 GHz OFDM configurations, the initial test configuration is applied to measure SAR using either the initial test position procedure for multiple exposure test position configurations or the initial test configuration procedures for fixed exposure test conditions. Based on the reported SAR of the measured configurations and maximum output power of the transmission mode configurations that are not included in the initial test configuration, the subsequent test configuration and initial test position procedures are applied to determine if SAR measurements are required for the remaining OFDM transmission configurations. In general, the number of test channels that require SAR measurement is minimized based on maximum output power measured for the test sample(s).
3. For OFDM transmission configurations in the 2.4 GHz and 5 GHz bands, When the same maximum power is specified for multiple transmission modes in a frequency band, the largest channel bandwidth, lowest order modulation, lowest data rate and lowest order 802.11a/g/n/ac mode is used for SAR measurement, on the highest measured output power channel for each frequency band.
4. DSSS and OFDM configurations are considered separately according to the required SAR procedures. SAR is measured in the initial test position using the 802.11 transmission mode configuration required by the DSSS procedure or initial test configuration and subsequent test configuration(s) according to the OFDM procedures. 18 The initial test position procedure is described in the following:
 - a. When the reported SAR of the initial test position is ≤ 0.4 W/kg, further SAR measurement is not required for the other test positions in that exposure configuration and 802.11 transmission mode combinations within the frequency band or aggregated band.
 - b. When the reported SAR of the test position is > 0.4 W/kg, SAR is repeated for the 802.11 transmission mode configuration tested in the initial test position to measure the subsequent next closet/smallest test separation distance and maximum coupling test position on the highest maximum output power channel, until the report SAR is ≤ 0.8 W/kg or all required test position are tested.
 - c. For all positions/configurations, when the reported SAR is > 0.8 W/kg, SAR is measured for these test positions/configurations on the subsequent next highest measured output power channel(s) until the reported SAR is ≤ 1.2 W/kg or all required channels are tested.

2.4GHz WLAN				Ant 1			Ant 2		
	Mode	Channel	Frequency (MHz)	Average power (dBm)	Tune-Up Limit	Duty Cycle %	Average power (dBm)	Tune-Up Limit	Duty Cycle %
2.4GHz WLAN	802.11b 1Mbps	1	2412	14.50	14.50	100	15.20	15.50	100
		6	2437	15.40	15.50		15.20	15.50	
		11	2462	15.30	15.50		15.20	15.50	
		12	2467	15.30	15.50		15.20	15.50	
		13	2472	15.00	15.50		15.30	15.50	
	802.11g 6Mbps	1	2412	Not required	15.50	Not required	Not required	15.50	100.00
		6	2437		15.50			15.50	
		11	2462		15.50			15.50	
		12	2467		13.00			13.00	
		13	2472		11.00			11.00	
	802.11n-HT20 MCS0	1	2412		15.50			15.50	
		6	2437		15.50			15.50	
		11	2462		15.50			15.50	
		12	2467		13.00			13.00	
		13	2472		11.00			11.00	

5.2GHz WLAN				Ant 1			Ant 2		
5.2GHz WLAN	Mode	Channel	Frequency (MHz)	Average power (dBm)	Tune-Up Limit	Duty Cycle %	Average power (dBm)	Tune-Up Limit	Duty Cycle %
	802.11a 6Mbps	36	5180	Not required	14.00	Not required	Not required	14.00	Not required
		40	5200		14.00				
		44	5220		14.00				
		48	5240		14.00				
	802.11n-HT20 MCS0	36	5180		14.00				
		40	5200		14.00				
		44	5220		14.00				
		48	5240		14.00				
	802.11n-HT40 MCS0	38	5190		13.50				
		46	5230		13.50				
	802.11ac-VHT20 MCS0	36	5180		13.50				
		40	5200		13.50				
		44	5220		13.50				
		48	5240		13.50				
	802.11ac-VHT40 MCS0	38	5190		13.00				
		46	5230		13.00				
802.11ac-VHT80 MCS0	42	5210	13.00						

5.3GHz WLAN				Ant 1			Ant 2		
5.3GHz WLAN	Mode	Channel	Frequency (MHz)	Average power (dBm)	Tune-Up Limit	Duty Cycle %	Average power (dBm)	Tune-Up Limit	Duty Cycle %
	802.11a 6Mbps	52	5260	13.60	14.00	100	13.70	14.00	100
		56	5280	13.40	14.00				
		60	5300	13.30	14.00				
		64	5320	13.30	14.00				
	802.11n-HT20 MCS0	52	5260	Not required	14.00	Not required	Not required	14.00	Not required
		56	5280		14.00				
		60	5300		14.00				
		64	5320		14.00				
	802.11n-HT40 MCS0	54	5270		13.50			13.50	
		62	5310		13.50			13.50	
	802.11ac-VHT20 MCS0	52	5260		13.50			13.50	
		56	5280		13.50			13.50	
		60	5300		13.50			13.50	
		64	5320		13.50			13.50	
	802.11ac-VHT40 MCS0	54	5270		13.00			13.00	
		62	5310		13.00			13.00	
802.11ac-VHT80 MCS0	58	5290	13.00		13.00				

5.5GHz WLAN				Ant 1			Ant 2		
	Mode	Channel	Frequency (MHz)	Average power (dBm)	Tune-Up Limit	Duty Cycle %	Average power (dBm)	Tune-Up Limit	Duty Cycle %
5.5GHz WLAN	802.11a 6Mbps	100	5500	13.60	14.00	100	13.50	14.00	100
		116	5580	13.70	14.00		13.60	14.00	
		124	5620	13.50	14.00		13.40	14.00	
		132	5660	13.30	14.00		13.40	14.00	
		144	5720	13.30	14.00		13.50	14.00	
	802.11n-HT20 MCS0	100	5500	Not required	14.00	Not required	Not required	14.00	Not required
		116	5580		14.00			14.00	
		124	5620		14.00			14.00	
		132	5660		14.00			14.00	
		144	5720		14.00			14.00	
	802.11n-HT40 MCS0	102	5510		13.50			13.50	
		110	5550		13.50			13.50	
		126	5630		13.50			13.50	
		134	5670		13.50			13.50	
		142	5710		13.50			13.50	
	802.11ac-VHT20 MCS0	100	5500		13.50			13.50	
		116	5580		13.50			13.50	
		124	5620		13.50			13.50	
		132	5660		13.50			13.50	
	802.11ac-VHT40 MCS0	102	5510		13.00			13.00	
		110	5550		13.00			13.00	
		126	5630		13.00			13.00	
		134	5670		13.00			13.00	
		142	5710		13.00			13.00	
	802.11ac-VHT80 MCS0	106	5530		13.00			13.00	
		122	5610		13.00			13.00	
		138	5690		13.00			13.00	

5.8GHz WLAN				Ant 1			Ant 2		
	Mode	Channel	Frequency (MHz)	Average power (dBm)	Tune-Up Limit	Duty Cycle %	Average power (dBm)	Tune-Up Limit	Duty Cycle %
5.8GHz WLAN	802.11a 6Mbps	149	5745	14.70	15.00	100	14.50	15.00	100
		157	5785	14.30	15.00		14.60	15.00	
		165	5825	14.60	15.00		14.40	15.00	
	802.11n-HT20 MCS0	149	5745	Not required	14.00	Not required	Not required	14.00	Not required
		157	5785		14.00			14.00	
		165	5825		14.00			14.00	
	802.11n-HT40 MCS0	151	5755		14.00			14.00	
		159	5795		14.00			14.00	
	802.11ac-VHT20 MCS0	149	5745		13.50			13.50	
		157	5785		13.50			13.50	
		165	5825		13.50			13.50	
	802.11ac-VHT40 MCS0	151	5755		13.00			13.00	
		159	5795		13.00			13.00	
	802.11ac-VHT80 MCS0	155	5775		13.00			13.00	

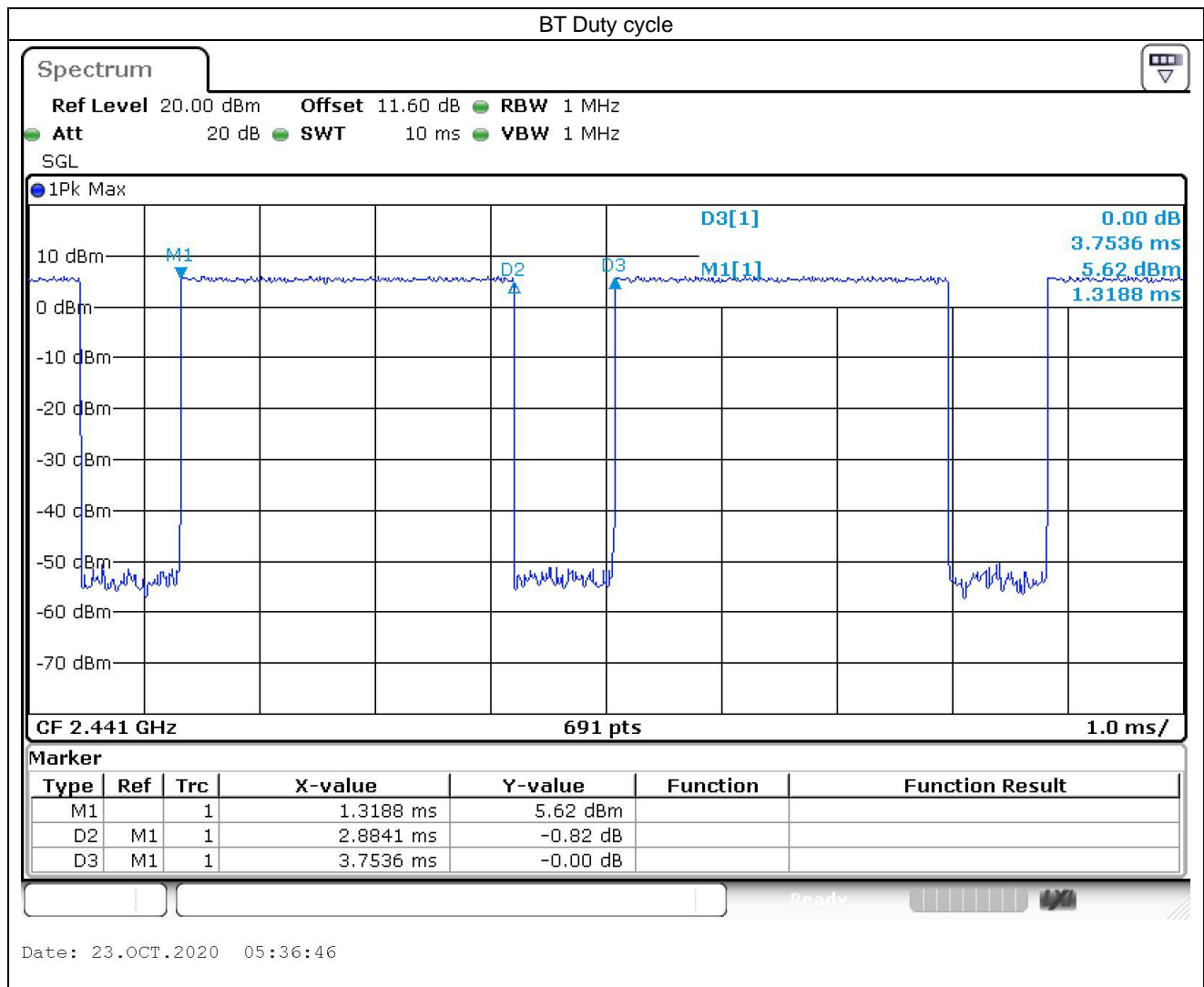
<2.4GHz Bluetooth Ant1>

Mode	Channel	Frequency (MHz)	Average power (dBm)		
			1Mbps	2Mbps	3Mbps
BR / EDR	CH 00	2402	7.30	Not required	Not required
	CH 39	2441	7.70		
	CH 78	2480	7.86		
Tune-up Limit			8.50	6.50	6.50

Mode	Channel	Frequency (MHz)	Average power (dBm)		
			GFSK		
LE	CH 00	2402	Not required		
	CH 19	2440			
	CH 39	2480			
Tune-up Limit			8.00		

General Note:

- For 2.4GHz Bluetooth SAR testing was selected 1Mbps due to its highest average power and duty cycle is 76.83% considered in SAR testing, and the duty cycle would be scaled to theoretical 83.3% in reported SAR calculation.



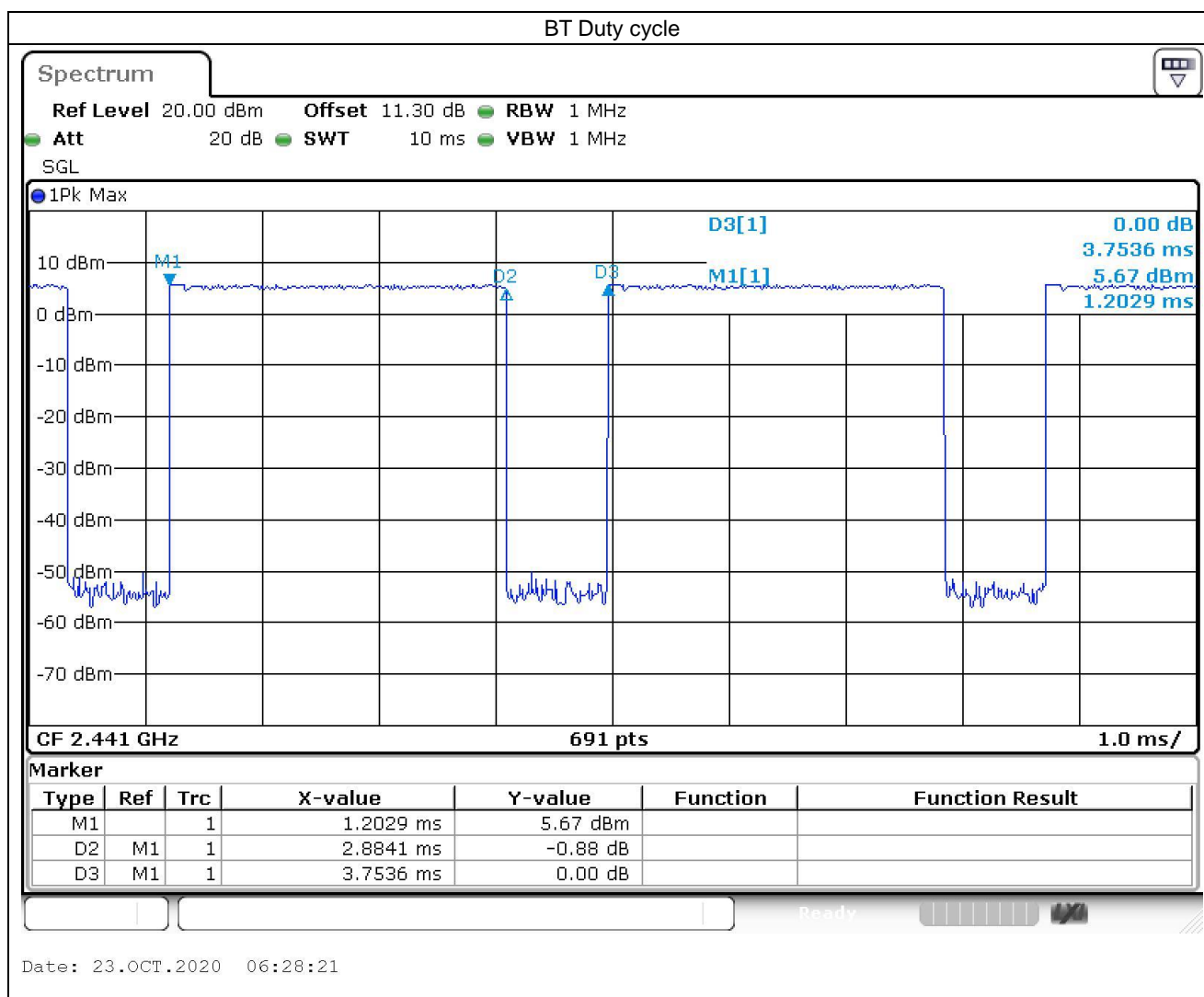
<2.4GHz Bluetooth Ant2>

Mode	Channel	Frequency (MHz)	Average power (dBm)		
			1Mbps	2Mbps	3Mbps
BR / EDR	CH 00	2402	7.45	Not required	Not required
	CH 39	2441	7.65		
	CH 78	2480	7.50		
Tune-up Limit			8.50	6.50	6.50

Mode	Channel	Frequency (MHz)	Average power (dBm)		
			GFSK		
LE	CH 00	2402	Not required		
	CH 19	2440			
	CH 39	2480			
Tune-up Limit			8.00		

General Note:

- For 2.4GHz Bluetooth SAR testing was selected 1Mbps due to its highest average power and duty cycle is 76.83% considered in SAR testing, and the duty cycle would be scaled to theoretical 83.3% in reported SAR calculation.



12. SAR test exclusion table

<SAR test exclusion table> Tablet

General Note:

- The below table, when the distance is < 50 mm exclusion threshold is "Ratio", when the distance is > 50 mm exclusion threshold is "mW"
- Maximum power is the source-based time-average power and represents the maximum RF output power among production units
- Per KDB 447498 D01v06, for larger devices, the test separation distance of adjacent edge configuration is determined by the closest separation between the antenna and the user.
- Per KDB 447498 D01v06, standalone SAR test exclusion threshold is applied; If the test separation distance is < 5mm, 5mm is used to determine SAR exclusion threshold.
- Per KDB 447498 D01v06, the 1-g and 10-g SAR test exclusion thresholds for 100 MHz to 6 GHz at *test separation distances* ≤ 50 mm are determined by:

$$[(\text{max. power of channel, including tune-up tolerance, mW}) / (\text{min. test separation distance, mm})] \cdot [\sqrt{f(\text{GHz})}] \leq 3.0 \text{ for 1-g SAR and } \leq 7.5 \text{ for 10-g extremity SAR}$$
 - f(GHz) is the RF channel transmit frequency in GHz
 - Power and distance are rounded to the nearest mW and mm before calculation
 - The result is rounded to one decimal place for comparison
- Per KDB 447498 D01v06, at 100 MHz to 6 GHz and for *test separation distances* > 50 mm, the SAR test exclusion threshold is determined according to the following
 - [Threshold at 50 mm in step 1) + (test separation distance - 50 mm) · (f(MHz)/150)] mW, at 100 MHz to 1500 MHz
 - [Threshold at 50 mm in step 1) + (test separation distance - 50 mm) · 10] mW at > 1500 MHz and ≤ 6 GHz
- Antenna location please refers to appendix D.

Exposure Position	Wireless Interface	2.4GHz WLAN ANT 1	2.4GHz WLAN ANT 2	5GHz WLAN ANT 1	5GHz WLAN ANT 2
	Calculated Frequency	2472MHz	2472MHz	5825MHz	5825MHz
	Maximum power (dBm)	15.5	15.5	15	15
	Maximum rated power(mW)	35.0	35.0	32.0	32.0
Bottom Face	Separation distance(mm)	5.0	5.0	5.0	5.0
	exclusion threshold	11.0	11.0	15.5	15.5
	Testing required?	Yes	Yes	Yes	Yes
Edge 1	Separation distance(mm)	150.0	5.0	150.0	5.0
	exclusion threshold	1095.0	11.0	1062.0	15.5
	Testing required?	No	Yes	No	Yes
Edge 2	Separation distance(mm)	5.0	148.0	5.0	148.0
	exclusion threshold	11.0	1075.0	15.5	1042.0
	Testing required?	Yes	No	Yes	No
Edge 3	Separation distance(mm)	5.0	150.0	5.0	150.0
	exclusion threshold	11.0	1095.0	15.5	1062.0
	Testing required?	Yes	No	Yes	No
Edge 4	Separation distance(mm)	230.0	100.0	230.0	100.0
	exclusion threshold	1895.0	595.0	1862.0	562.0
	Testing required?	No	No	No	No

13. SAR Test Results

General Note:

1. Per KDB 447498 D01v06, the reported SAR is the measured SAR value adjusted for maximum tune-up tolerance.
 - a. Tune-up scaling Factor = tune-up limit power (mW) / EUT RF power (mW), where tune-up limit is the maximum rated power among all production units.
 - b. For SAR testing of WLAN signal with non-100% duty cycle, the measured SAR is scaled-up by the duty cycle scaling factor which is equal to "1/(duty cycle)"
 - c. For WLAN/Bluetooth: Reported SAR(W/kg)= Measured SAR(W/kg)* Duty Cycle scaling factor * Tune-up scaling factor
2. Per KDB 447498 D01v06, for each exposure position, testing of other required channels within the operating mode of a frequency band is not required when the *reported* 1-g or 10-g SAR for the mid-band or highest output power channel is:
 - ≤ 0.8 W/kg or 2.0 W/kg, for 1-g or 10-g respectively, when the transmission band is ≤ 100 MHz
 - ≤ 0.6 W/kg or 1.5 W/kg, for 1-g or 10-g respectively, when the transmission band is between 100 MHz and 200 MHz
 - ≤ 0.4 W/kg or 1.0 W/kg, for 1-g or 10-g respectively, when the transmission band is ≥ 200 MHz
3. Per KDB 865664 D01v01r04, for each frequency band, repeated SAR measurement is required only when the measured SAR is ≥ 0.8 W/kg.

WLAN Note:

1. Per KDB 248227 D01v02r02, for 2.4GHz 802.11g/n SAR testing is not required when the highest reported SAR for DSSS is adjusted by the ratio of OFDM to DSSS specified maximum output power and the adjusted SAR is ≤ 1.2 W/kg.
2. Per KDB 248227 D01v02r02, U-NII-1 SAR testing is not required when the U-NII-2A band highest reported SAR for a test configuration is ≤ 1.2 W/kg, SAR is not required for U-NII-1 band.
3. When the reported SAR of the test position is > 0.4 W/kg, SAR is repeated for the 802.11 transmission mode configuration tested in the initial test position to measure the subsequent next closet/smallest test separation distance and maximum coupling test position on the highest maximum output power channel, until the report SAR is ≤ 0.8 W/kg or all required test position are tested.
4. For all positions / configurations, when the reported SAR is > 0.8 W/kg, SAR is measured for these test positions / configurations on the subsequent next highest measured output power channel(s) until the reported SAR is ≤ 1.2 W/kg or all required channels are tested.
5. During SAR testing the WLAN transmission was verified using a spectrum analyzer.
6. Since WiFi / Bluetooth transmitter share the same antenna path, therefore, for Bluetooth SAR testing is selected the same position of 2.4GHz WLAN.

13.1 Body SAR

<WLAN SAR>

Plot No.	Band	Mode	Test Position	Gap (mm)	Antenna	Ch.	Freq. (MHz)	Average Power (dBm)	Tune-Up Limit (dBm)	Tune-up Scaling Factor	Duty Cycle %	Duty Cycle Scaling Factor	Power Drift (dB)	Measured 1g SAR (W/kg)	Reported 1g SAR (W/kg)
01	WLAN2.4GHz	802.11b 1Mbps	Bottom Face	0mm	Ant 1	6	2437	15.40	15.50	1.023	100	1.000	-0.16	1.070	1.095
	WLAN2.4GHz	802.11b 1Mbps	Bottom Face	0mm	Ant 1	1	2412	14.50	14.50	1.000	100	1.000	0.12	0.824	0.824
	WLAN2.4GHz	802.11b 1Mbps	Bottom Face	0mm	Ant 1	11	2462	15.30	15.50	1.047	100	1.000	-0.09	0.890	0.932
	WLAN2.4GHz	802.11b 1Mbps	Bottom Face	0mm	Ant 1	12	2467	15.30	15.50	1.047	100	1.000	-0.05	0.808	0.846
	WLAN2.4GHz	802.11b 1Mbps	Bottom Face	0mm	Ant 1	13	2472	15.00	15.50	1.122	100	1.000	0.05	0.934	1.048
	WLAN2.4GHz	802.11b 1Mbps	Edge 2	0mm	Ant 1	6	2437	15.40	14.50	0.813	100	1.000	0.03	0.218	0.177
	WLAN2.4GHz	802.11b 1Mbps	Edge 3	0mm	Ant 1	6	2437	15.40	14.50	0.813	100	1.000	-0.01	0.605	0.492
	WLAN2.4GHz	802.11b 1Mbps	Bottom Face	0mm	Ant 2	13	2472	15.30	15.50	1.047	100	1.000	-0.07	0.807	0.845
	WLAN2.4GHz	802.11b 1Mbps	Bottom Face	0mm	Ant 2	1	2412	15.20	15.50	1.072	100	1.000	0.06	0.689	0.738
	WLAN2.4GHz	802.11b 1Mbps	Bottom Face	0mm	Ant 2	6	2437	15.20	15.50	1.072	100	1.000	-0.15	0.734	0.786
	WLAN2.4GHz	802.11b 1Mbps	Bottom Face	0mm	Ant 2	11	2462	15.20	15.50	1.072	100	1.000	-0.13	0.778	0.834
	WLAN2.4GHz	802.11b 1Mbps	Bottom Face	0mm	Ant 2	12	2467	15.20	15.50	1.072	100	1.000	0.03	0.782	0.838
	WLAN2.4GHz	802.11b 1Mbps	Edge 1	0mm	Ant 2	13	2472	15.30	15.50	1.047	100	1.000	-0.08	0.460	0.482
	WLAN5GHz	802.11a 6Mbps	Bottom Face	0mm	Ant 1	52	5260	13.60	14.00	1.096	100	1.000	0.05	0.753	0.826
	WLAN5GHz	802.11a 6Mbps	Bottom Face	0mm	Ant 1	56	5280	13.40	14.00	1.148	100	1.000	0.11	0.761	0.874
	WLAN5GHz	802.11a 6Mbps	Bottom Face	0mm	Ant 1	60	5300	13.30	14.00	1.175	100	1.000	0.05	0.628	0.738
	WLAN5GHz	802.11a 6Mbps	Bottom Face	0mm	Ant 1	64	5320	13.30	14.00	1.175	100	1.000	0.02	0.609	0.716
	WLAN5GHz	802.11a 6Mbps	Edge 2	0mm	Ant 1	52	5260	13.60	14.00	1.096	100	1.000	-0.05	0.146	0.160
	WLAN5GHz	802.11a 6Mbps	Edge 3	0mm	Ant 1	52	5260	13.60	14.00	1.096	100	1.000	0.08	0.572	0.627
	WLAN5GHz	802.11a 6Mbps	Bottom Face	0mm	Ant 2	52	5260	13.70	14.00	1.072	100	1.000	0.09	0.465	0.498
02	WLAN5GHz	802.11a 6Mbps	Edge 1	0mm	Ant 2	52	5260	13.70	14.00	1.072	100	1.000	-0.13	0.923	0.989
	WLAN5GHz	802.11a 6Mbps	Edge 1	0mm	Ant 2	60	5300	13.40	14.00	1.148	100	1.000	0.01	0.822	0.944
	WLAN5GHz	802.11a 6Mbps	Edge 1	0mm	Ant 2	56	5280	13.40	14.00	1.148	100	1.000	0.05	0.848	0.974
	WLAN5GHz	802.11a 6Mbps	Edge 1	0mm	Ant 2	64	5320	13.50	14.00	1.122	100	1.000	-0.15	0.779	0.874
03	WLAN5GHz	802.11a 6Mbps	Bottom Face	0mm	Ant 1	116	5580	13.70	14.00	1.072	100	1.000	0.03	0.841	0.901
	WLAN5GHz	802.11a 6Mbps	Bottom Face	0mm	Ant 1	100	5500	13.60	14.00	1.096	100	1.000	0.02	0.723	0.793
	WLAN5GHz	802.11a 6Mbps	Bottom Face	0mm	Ant 1	124	5620	13.50	14.00	1.122	100	1.000	0.04	0.773	0.867
	WLAN5GHz	802.11a 6Mbps	Bottom Face	0mm	Ant 1	132	5660	13.30	14.00	1.175	100	1.000	0.17	0.684	0.804
	WLAN5GHz	802.11a 6Mbps	Bottom Face	0mm	Ant 1	144	5720	13.30	14.00	1.175	100	1.000	-0.02	0.765	0.899
	WLAN5GHz	802.11a 6Mbps	Edge 2	0mm	Ant 1	116	5580	13.70	14.00	1.072	100	1.000	0.12	0.105	0.113
	WLAN5GHz	802.11a 6Mbps	Edge 3	0mm	Ant 1	116	5580	13.70	14.00	1.072	100	1.000	-0.03	0.598	0.641
	WLAN5GHz	802.11a 6Mbps	Bottom Face	0mm	Ant 2	116	5580	13.60	14.00	1.096	100	1.000	0.12	0.664	0.728
	WLAN5GHz	802.11a 6Mbps	Edge 1	0mm	Ant 2	116	5580	13.60	14.00	1.096	100	1.000	-0.01	0.389	0.427
04	WLAN5GHz	802.11a 6Mbps	Bottom Face	0mm	Ant 1	149	5745	14.70	15.00	1.072	100	1.000	0.17	0.921	0.987
	WLAN5GHz	802.11a 6Mbps	Bottom Face	0mm	Ant 1	157	5785	14.30	15.00	1.175	100	1.000	-0.02	0.827	0.972
	WLAN5GHz	802.11a 6Mbps	Bottom Face	0mm	Ant 1	165	5825	14.60	15.00	1.096	100	1.000	0.1	0.794	0.871
	WLAN5GHz	802.11a 6Mbps	Edge 2	0mm	Ant 1	149	5745	14.70	15.00	1.072	100	1.000	-0.09	0.171	0.183
	WLAN5GHz	802.11a 6Mbps	Edge 3	0mm	Ant 1	149	5745	14.70	15.00	1.072	100	1.000	0.06	0.570	0.611
	WLAN5GHz	802.11a 6Mbps	Bottom Face	0mm	Ant 2	157	5785	14.60	15.00	1.096	100	1.000	0.07	0.803	0.880
	WLAN5GHz	802.11a 6Mbps	Bottom Face	0mm	Ant 2	149	5745	14.50	15.00	1.122	100	1.000	-0.14	0.791	0.888
	WLAN5GHz	802.11a 6Mbps	Bottom Face	0mm	Ant 2	165	5825	14.40	15.00	1.148	100	1.000	0.14	0.815	0.936
	WLAN5GHz	802.11a 6Mbps	Edge 1	0mm	Ant 2	157	5785	14.60	15.00	1.096	100	1.000	0.05	0.593	0.650

<Bluetooth SAR>

Plot No.	Band	Mode	Test Position	Gap (mm)	Antenna	Ch.	Freq. (MHz)	Average Power (dBm)	Tune-Up Limit (dBm)	Tune-up Scaling Factor	Duty Cycle %	Duty Cycle Scaling Factor	Power Drift (dB)	Measured 1g SAR (W/kg)	Reported 1g SAR (W/kg)
05	Bluetooth	1Mbps	Bottom Face	0mm	Ant 1	78	2480	7.86	8.50	1.159	76.83	1.084	-0.01	0.145	0.182
	Bluetooth	1Mbps	Bottom Face	0mm	Ant 1	0	2402	7.30	8.50	1.318	76.83	1.084	-0.18	0.134	0.191
	Bluetooth	1Mbps	Bottom Face	0mm	Ant 1	39	2441	7.70	8.50	1.202	76.83	1.084	0.06	0.141	0.184
	Bluetooth	1Mbps	Edge 2	0mm	Ant 1	78	2480	7.86	8.50	1.159	76.83	1.084	0.16	0.001	0.001
	Bluetooth	1Mbps	Edge 3	0mm	Ant 1	78	2480	7.86	8.50	1.159	76.83	1.084	-0.07	0.073	0.092
	Bluetooth	1Mbps	Bottom Face	0mm	Ant 2	39	2441	7.65	8.50	1.216	76.83	1.084	-0.14	0.116	0.153
	Bluetooth	1Mbps	Bottom Face	0mm	Ant 2	0	2402	7.45	8.50	1.274	76.83	1.084	0.06	0.125	0.173
	Bluetooth	1Mbps	Bottom Face	0mm	Ant 2	78	2480	7.50	8.50	1.259	76.83	1.084	-0.08	0.111	0.151
	Bluetooth	1Mbps	Edge 1	0mm	Ant 2	39	2441	7.65	8.50	1.216	76.83	1.084	0.09	0.038	0.050

13.2 Repeated SAR Measurement

No.	Band	Mode	Test Position	Gap (mm)	Antenna	Ch.	Freq. (MHz)	Average Power (dBm)	Tune-Up Limit (dBm)	Tune-up Scaling Factor	Duty Cycle %	Duty Cycle Scaling Factor	Power Drift (dB)	Measured 1g SAR (W/kg)	Ratio	Reported 1g SAR (W/kg)
1st	WLAN2.4GHz	802.11b 1Mbps	Bottom Face	0mm	Ant 1	6	2437	15.4	15.5	1.023	100	1	-0.16	1.07		1.095
2nd	WLAN2.4GHz	802.11b 1Mbps	Bottom Face	0mm	Ant 1	6	2437	15.4	15.5	1.023	100	1	0.11	1.04	1.029	1.064
1st	WLAN5GHz	802.11a 6Mbps	Edge 1	0mm	Ant 2	52	5260	13.7	14	1.072	100	1	-0.13	0.923		0.989
2nd	WLAN5GHz	802.11a 6Mbps	Edge 1	0mm	Ant 2	52	5260	13.7	14	1.072	100	1	-0.17	0.899	1.027	0.963
1st	WLAN5GHz	802.11a 6Mbps	Bottom Face	0mm	Ant 1	116	5580	13.7	14	1.072	100	1	0.03	0.841		0.901
2nd	WLAN5GHz	802.11a 6Mbps	Bottom Face	0mm	Ant 1	116	5580	13.7	14	1.072	100	1	0.08	0.824	1.021	0.883
1st	WLAN5GHz	802.11a 6Mbps	Bottom Face	0mm	Ant 1	149	5745	14.7	15	1.072	100	1	0.17	0.921		0.987
2nd	WLAN5GHz	802.11a 6Mbps	Bottom Face	0mm	Ant 1	149	5745	14.7	15	1.072	100	1	0.09	0.904	1.019	0.969

General Note:

- Per KDB 865664 D01v01r04, for each frequency band, repeated SAR measurement is required only when the measured SAR is $\geq 0.8\text{W/kg}$.
- Per KDB 865664 D01v01r04, if the ratio among the repeated measurement is ≤ 1.2 and the measured SAR $< 1.45\text{W/kg}$, only one repeated measurement is required.
- The ratio is the difference in percentage between original and repeated *measured* SAR.
- All measurement SAR result is scaled-up to account for tune-up tolerance and is compliant.

14. Simultaneous Transmission Analysis

NO.	Simultaneous Transmission Configurations	Body
1.	5GHz WLAN Ant 1+ Bluetooth Ant 1	Yes
2.	5GHz WLAN Ant 2 + Bluetooth Ant 2	Yes

General Note:

1. The worst case 5 GHz WLAN reported SAR for each configuration was used for SAR summation, regardless of whether the WLAN channel has WiFi Direct and Hotspot capability. Therefore, the following summations represent the absolute worst cases for simultaneous transmission with 5 GHz WLAN.
2. EUT will choose either WLAN 2.4GHz or WLAN 5GHz according to the network signal condition; therefore, 2.4GHz WLAN and 5GHz WLAN will not operate simultaneously at any moment.
3. The Scaled SAR summation is calculated based on the same configuration and test position.

14.1 Body Exposure Conditions

Exposure Position	1	2	3	4	5	6	3+5 Summed 1g SAR (W/kg)	4+6 Summed 1g SAR (W/kg)
	2.4GHz WLAN Ant 1 1g SAR (W/kg)	2.4GHz WLAN Ant 2 1g SAR (W/kg)	5GHz WLAN Ant 1 1g SAR (W/kg)	5GHz WLAN Ant 2 1g SAR (W/kg)	Bluetooth Ant 1 1g SAR (W/kg)	Bluetooth Ant 2 1g SAR (W/kg)		
Bottom Face at 0mm	1.095	0.845	0.987	0.936	0.191	0.173	1.178	1.109
Edge 1 at 0mm		0.482		0.989		0.050	0.000	1.039
Edge 2 at 0mm	0.177		0.183		0.001		0.184	0.000
Edge 3 at 0mm	0.492		0.641		0.092		0.733	0.000

Test Engineer : Carter Jhuang, Bevis Chang and Randy Lin

15. Uncertainty Assessment

Per KDB 865664 D01 SAR measurement 100MHz to 6GHz, when the highest measured 1-g SAR within a frequency band is < 1.5 W/kg and the measured 10-g SAR within a frequency band is < 3.75 W/kg. The expanded SAR measurement uncertainty must be $\leq 30\%$, for a confidence interval of $k = 2$. If these conditions are met, extensive SAR measurement uncertainty analysis described in IEEE Std 1528-2013 is not required in SAR reports submitted for equipment approval. For this device, the highest measured 1-g SAR is less 1.5W/kg. Therefore, the measurement uncertainty table is not required in this report.

Declaration of Conformity:

The test results with all measurement uncertainty excluded is presented in accordance with the regulation limits or requirements declared by manufacturers.

Comments and Explanations:

The declared of product specification for EUT presented in the report are provided by the manufacturer, and the manufacturer takes all the responsibilities for the accuracy of product specification.

16. References

- [1] FCC 47 CFR Part 2 "Frequency Allocations and Radio Treaty Matters; General Rules and Regulations"
- [2] ANSI/IEEE Std. C95.1-1992, "IEEE Standard for Safety Levels with Respect to Human Exposure to Radio Frequency Electromagnetic Fields, 3 kHz to 300 GHz", September 1992
- [3] IEEE Std. 1528-2013, "IEEE Recommended Practice for Determining the Peak Spatial-Average Specific Absorption Rate (SAR) in the Human Head from Wireless Communications Devices: Measurement Techniques", Sep 2013
- [4] SPEAG DASY System Handbook
- [5] FCC KDB 248227 D01 v02r02, "SAR Guidance for IEEE 802.11 (WiFi) Transmitters", Oct 2015.
- [6] FCC KDB 447498 D01 v06, "Mobile and Portable Device RF Exposure Procedures and Equipment Authorization Policies", Oct 2015
- [7] FCC KDB 616217 D04 v01r02, "SAR Evaluation Considerations for Laptop, Notebook, Netbook and Tablet Computers", Oct 2015
- [8] FCC KDB 865664 D01 v01r04, "SAR Measurement Requirements for 100 MHz to 6 GHz", Aug 2015.
- [9] FCC KDB 865664 D02 v01r02, "RF Exposure Compliance Reporting and Documentation Considerations" Oct 2015.