

*Win Smart Illumination  
via Innovation*

**MustWin**

## **Smart LED Flood Light User Guide**

# Smart LED Flood Light User Guide

THANK YOU for choosing MustWin. To optimize user experience, please install and use the light according to the following instruction.

Set-up is easy and takes only a few minutes by following the instructions.

The Smart LED Floodlight can work with both Amazon Alexa and Google Assistant. But the light after being installed will need to be paired with an app called 'Smart Life' first, and then the Smart Life app will need to be bound with either Amazon Alexa or Google Assistant to activate the voice control function.

Therefore, this manual consists of four parts. Part one and two are fundamental set-up, while part three and four are alternatives. If you use Amazon Alexa for voice control, please follow instructions on part one, two and three. If you use Google Assistant for voice control, please skip part three, follow the instructions on part one, two and four.

## Part One

How to install the Floodlight? ..... 2 - 7

## Part Two

How to pair the Floodlight to Smart Life app?..... 8 - 18

## Part Three

How to control the Floodlight with Amazon Alexa? ..... 19 - 21

## Part Four

How to control the Floodlight with Google Assistant? ..... 22 - 23

# Part One - How to install the Floodlight?

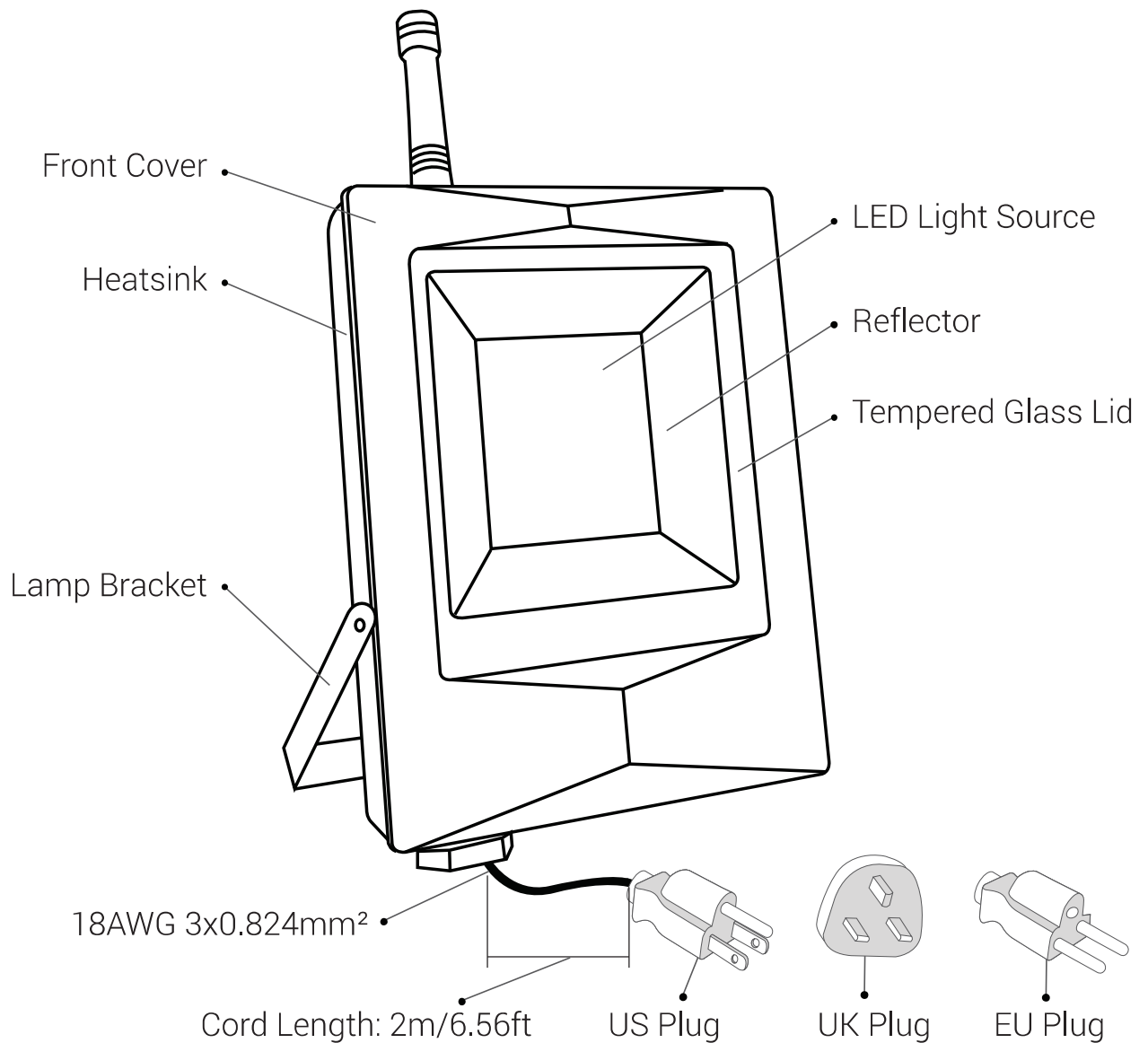
## Warning

- (1) Please check if the light and the parts are intact before installation.
- (2) Make sure to cut off power before installation.
- (3) Please do not place this light in corrosive conditions.
- (4) If there is any damage to the cord, please cut off the power and stop using it immediately.
- (5) Please do not retrofit the light within the warranty period.
- (6) To ensure the light works properly, please use the voltage indicated on the packing.
- (7) To avoid any damage to the light, please do not use chemical solvent during routine maintenance.
- (8) Please do not shoot the light directly to the eyes.
- (9) Please do not immerse the whole light into water.
- (10) In case of explosion, please keep the light away from fire and high temperature.
- (11) If any component of this light needs to be replaced, please choose those of the same specification.

## 1. Specification

SKU	MWA09RGBCWUSA04H	MWA09RGBCWUSA01
Bluetooth Hub(Gateway)	Included	Not included
Model Number	MWA09	
Wattage	20W	
Color	Daylight, Warmwhite, RGB	
Color Temperature	2700-6500K	
Lumen Output	2000lm	
Input	AC100-240V	
Protection Rate	IP65	
CRI	80	
Beam Angle	120 Degree	
Frequency	50/60Hz	
Life Span	50000H	
ta	-20~40°C	

## 2. Components

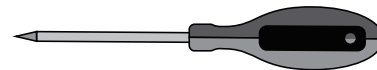
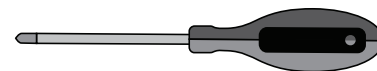
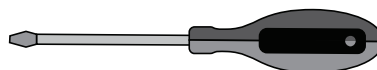
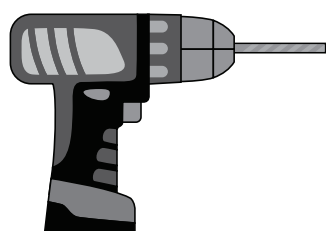


Note: 1. Different plugs for different countries. 2. Cord - type Z attachment. For type Z attachment, if the external cord of this luminaire is damaged, it cannot be replaced without breaking or destroying the luminaire.

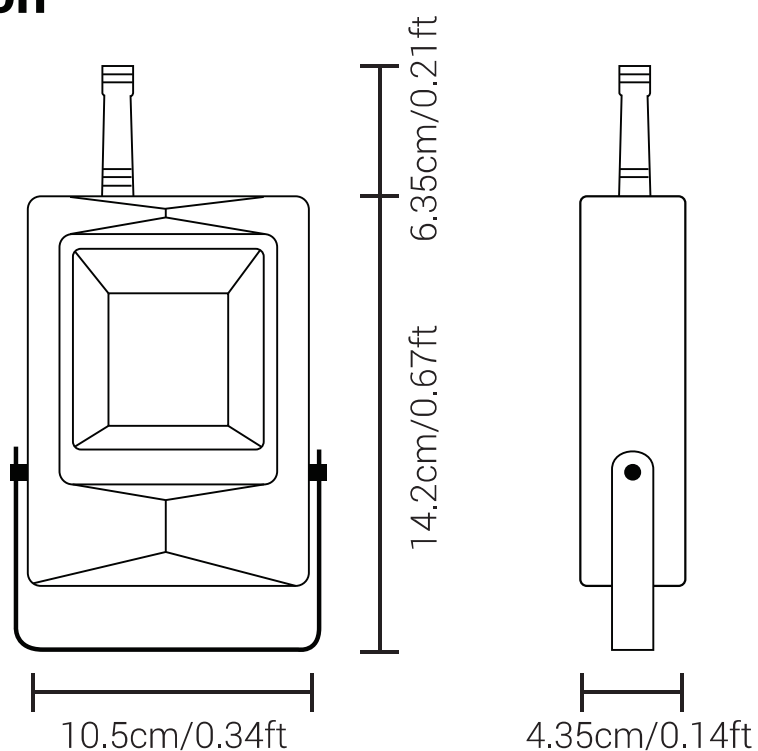


**\*\* \*\*** Only MWA09RGBCWUSA04H includes a hub,  
MWA09RGBCWUSA01 doesn't include a hub.

## Not included



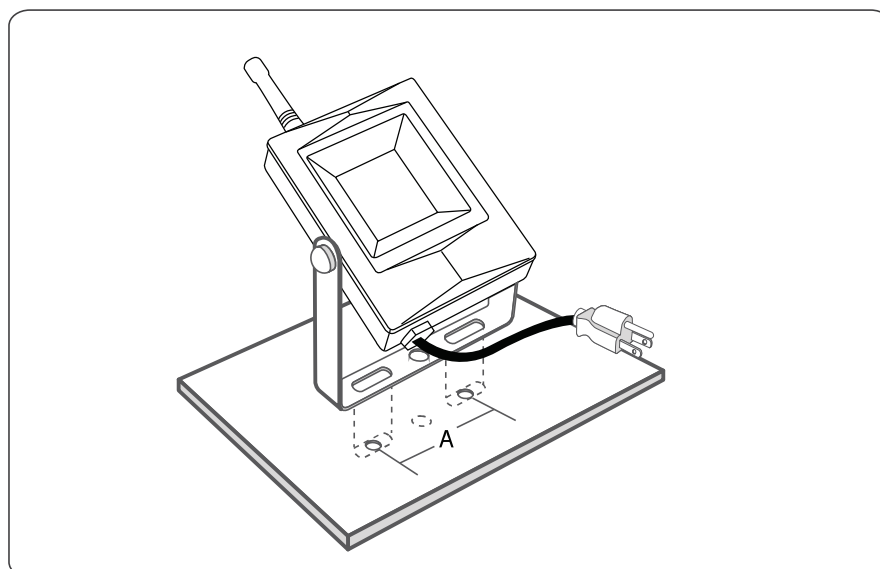
### 3. Dimension



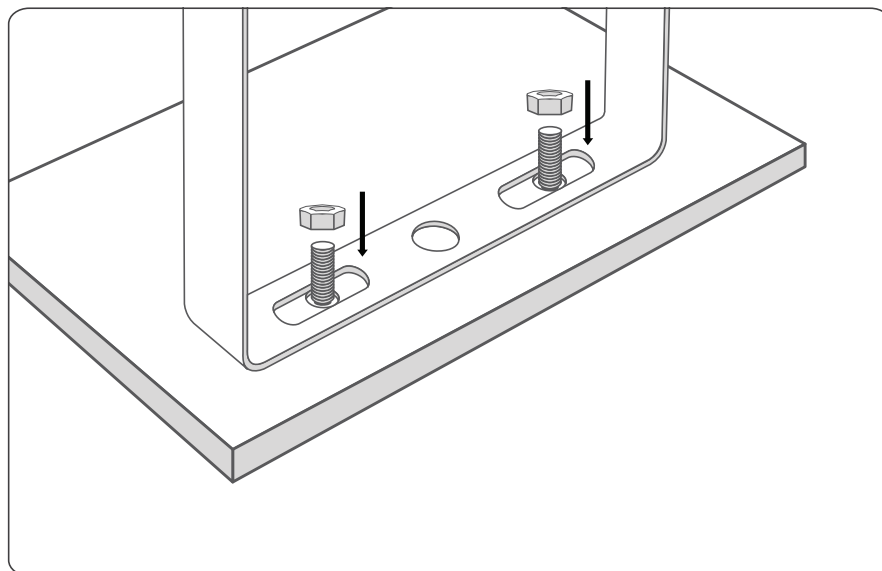
MWA09RGBCWUSA  
Weight: 1.87lb/0.85kg  
Max Projected Area: 20m<sup>2</sup>

### 4. Installation

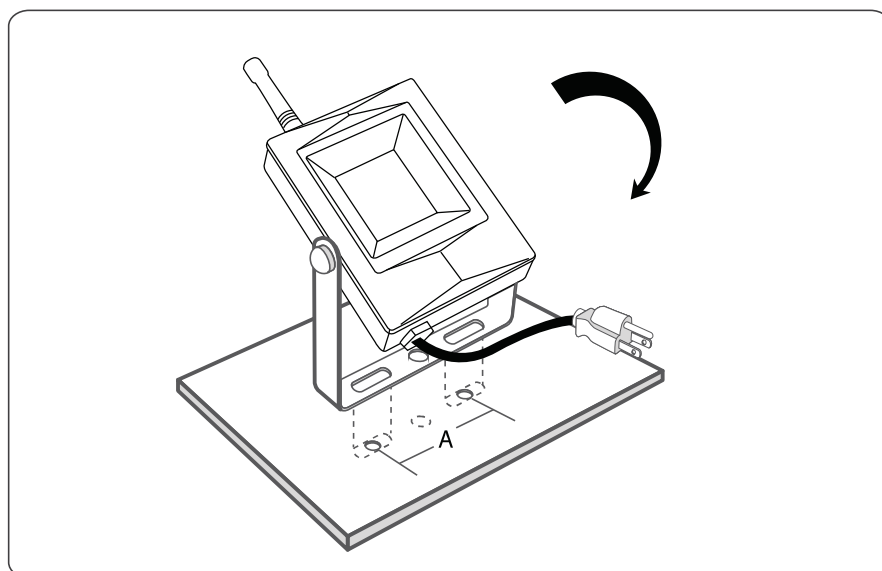
**Step A:** According to the spacing of two screw bits on the bracket, drill two holes on the mounting panel.



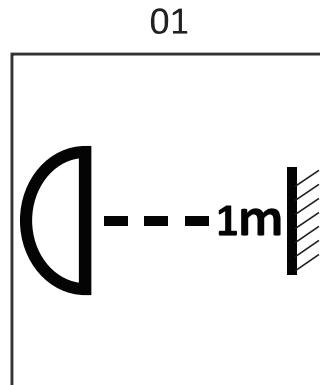
**Step B:** Aim the bracket at the holes and fix it with two bolts.



**Step C:** Adjust the lighting direction up or down as per your need and plug in to power the light on.



**Note:**



01 Make sure that the distance between the light and the object being lit is more than 1 meter, so as to avoid high temperature caused by short distance.

**Non-replaceable Light Source.**

**Limitation of Indoor and Outdoor Use**

- (1) This light is waterproof and dampproof. It is protected against the rain, but it cannot be immersed in water.
- (2) The mounting position of this light should be able to bear at least 10 times as heavy as the light.
- (3) This light should be used in condition that is good for heat dissipation. Its working temperature should be less than 40°C. Too high the working temperature will cause serious lumen depression and affect lifespan of the light.



## Part Two - How to pair the Floodlight to Smart Life app?



Before starting the pairing, please make sure to turn on the Bluetooth on your phone.

### **Step A :** Smart Life app installation.

Please choose either way below to download and install the app.

1. As per your phone system, choose the QR code to scan.



iOS



Android

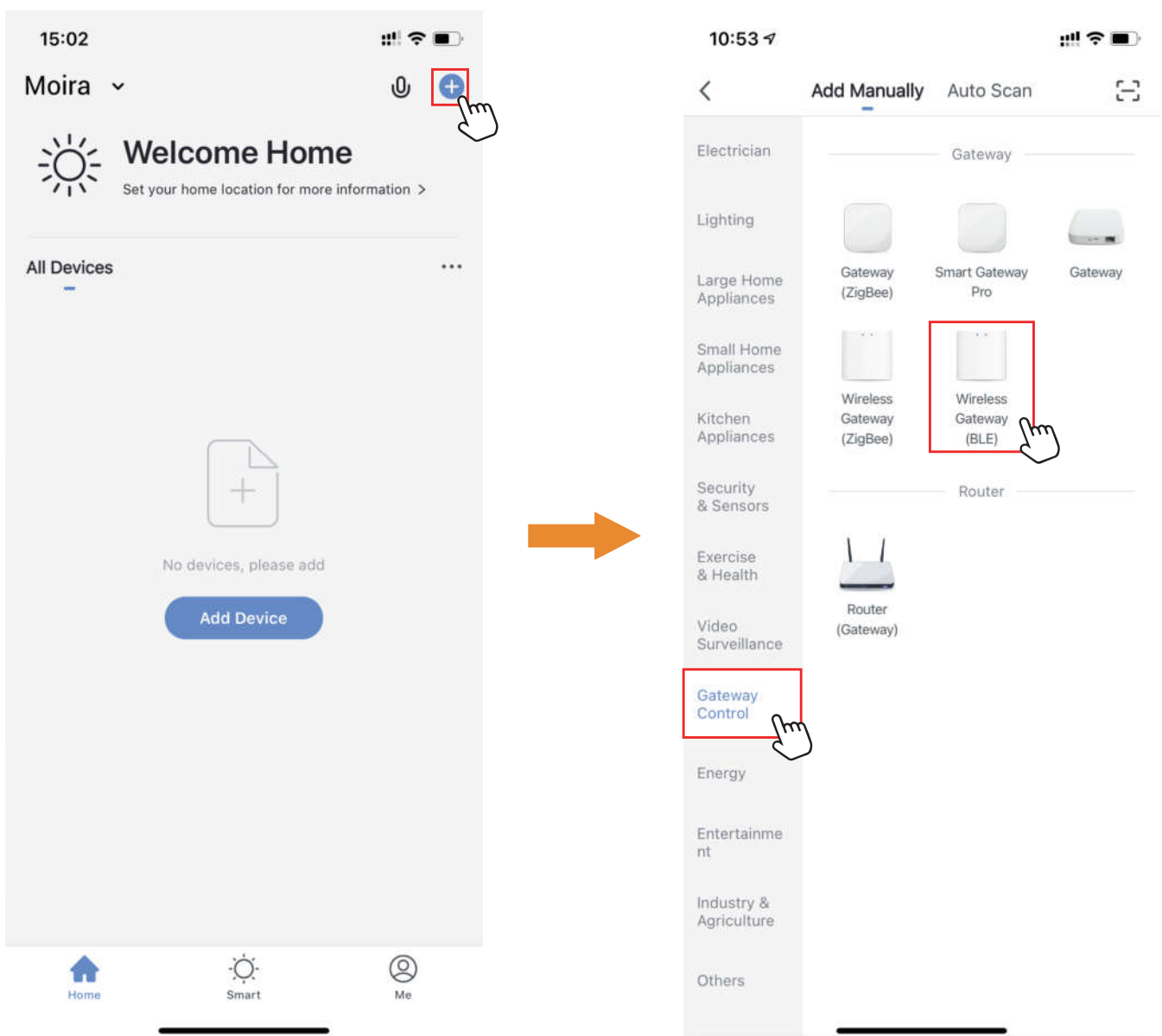
2. Search keyword 'Smart Life' in Apple Store or Google Play.

### **Step B :** Create an account on Smart Life and login.

Note: Please keep your account and password in mind for Alexa or Google Assistant App pairing later.

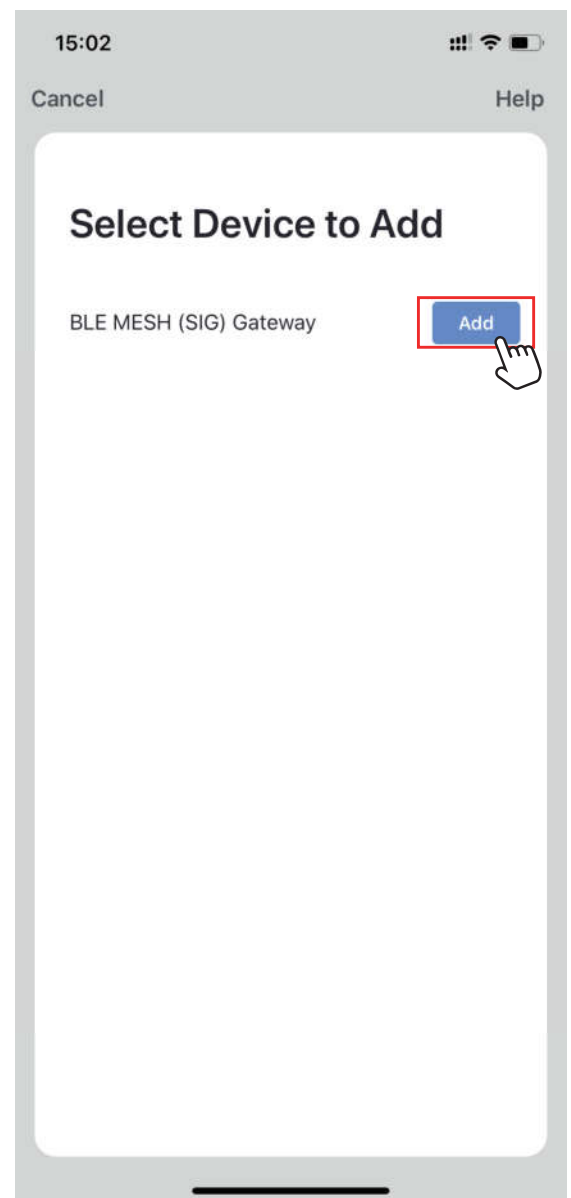
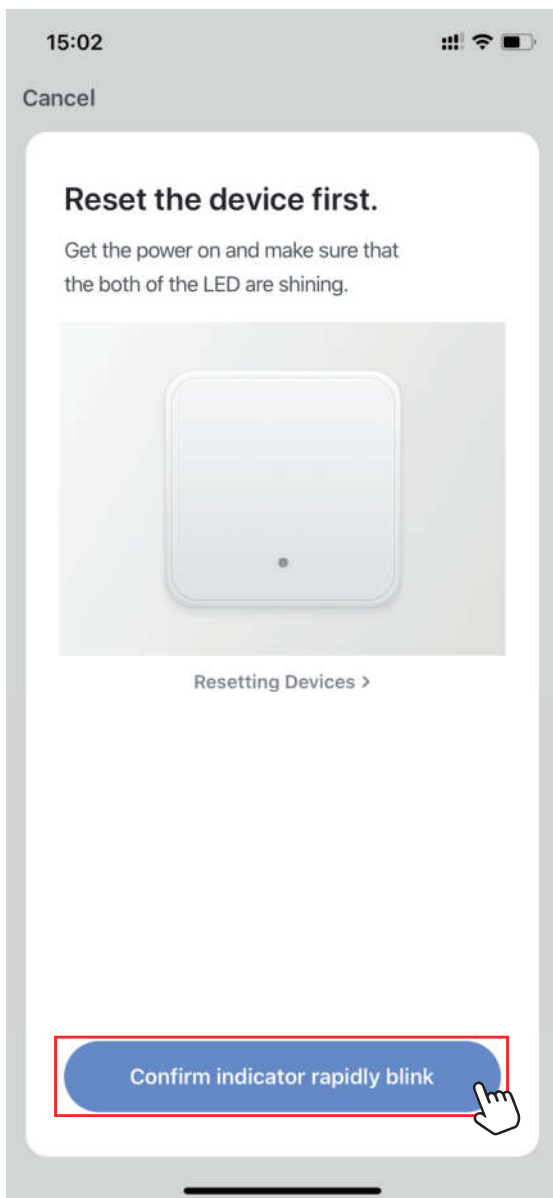
**Step C : WiFi Connection.**

This product only supports 2.4GHz WiFi network, not 5.0GHz. Please make sure your working network is 2.4GHz and your router has disabled the MAC filter.

**1. Pair Smart Life App to Bluetooth Mesh hub.****1) Option One**

(1) Tap '+' button on top right corner to enter next page.

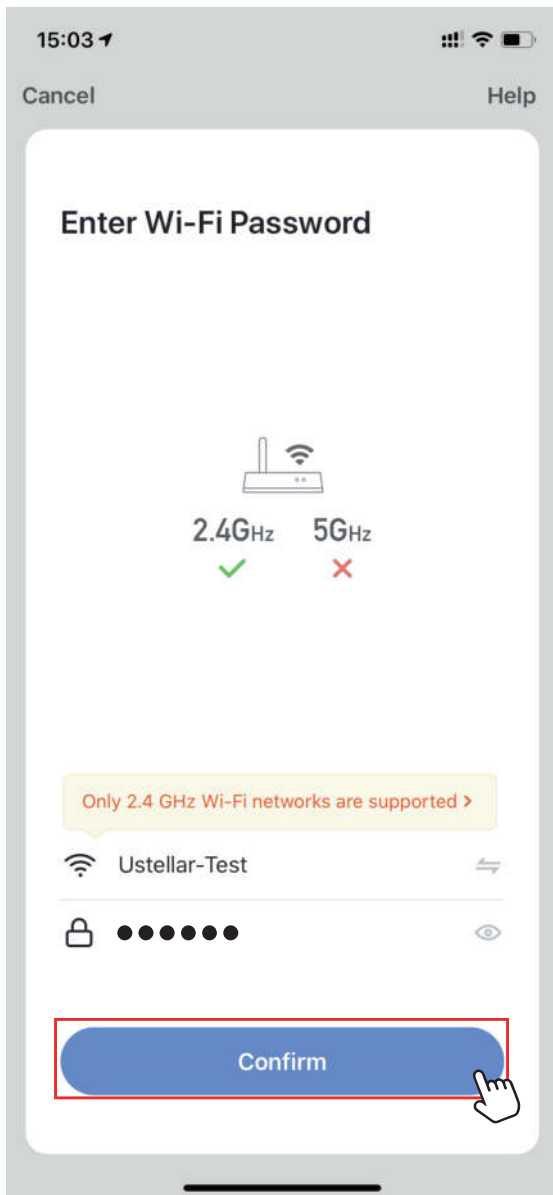
(2) Tap 'Gateway Control', then choose 'Wireless Gateway (BLE)' to add the hub.



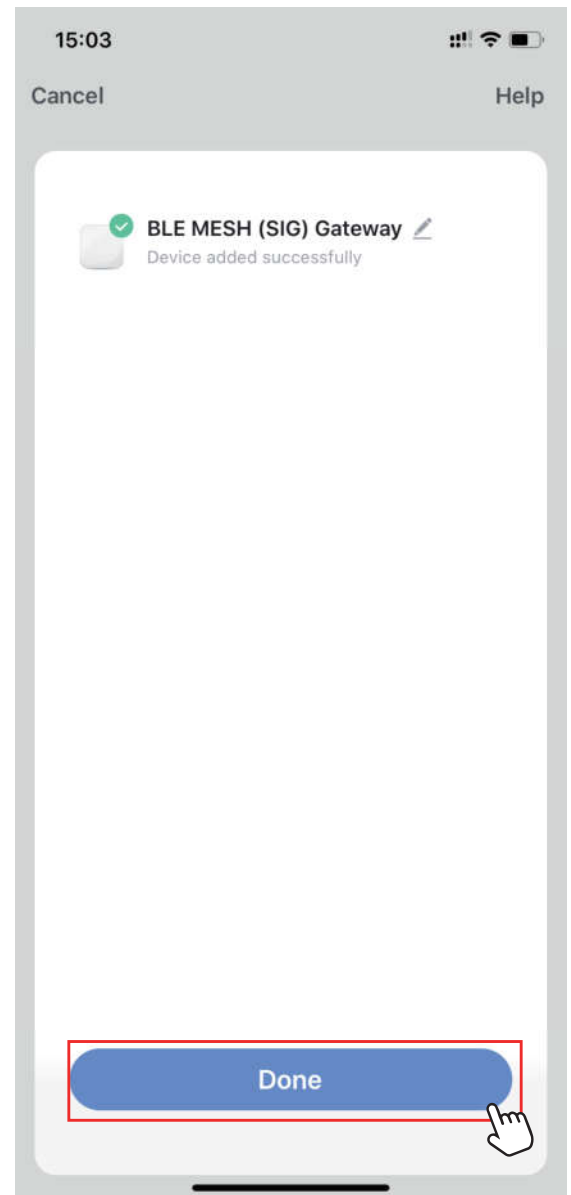
(3). Plug the hub into a socket. Long press the power button on the hub till the indicator lights rapidly blink, then tap the confirm button on this page.

(4) Click 'Add' button to add the hub.

\*\* It is recommended to place the hub to somewhere that is between the lighting device and the router, and also responds well to the WiFi signal.

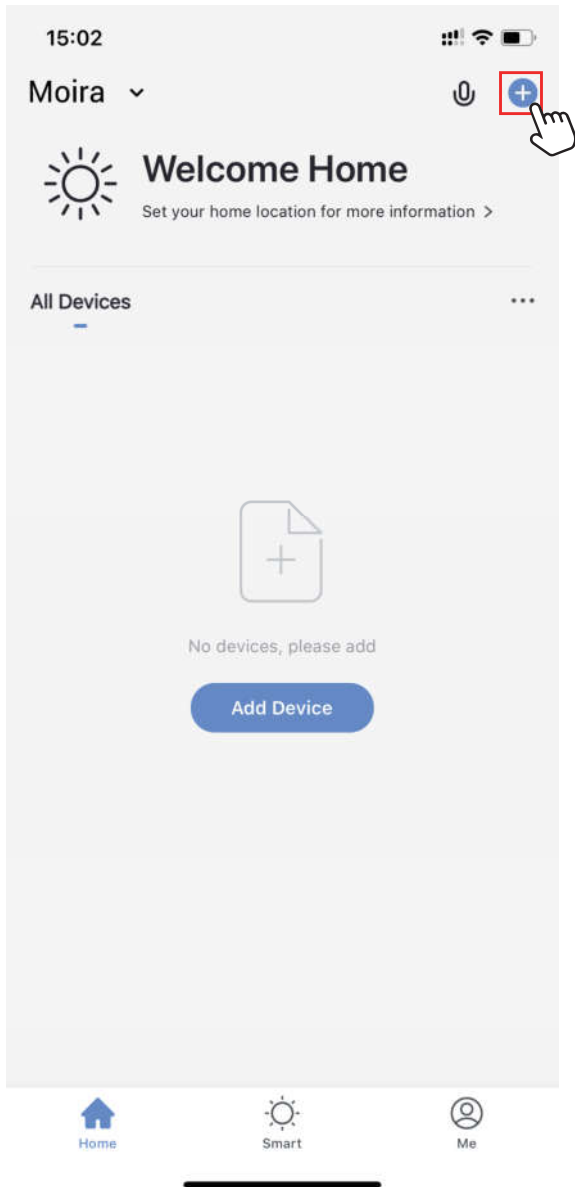


(5) Select you WiFi network and enter the password.

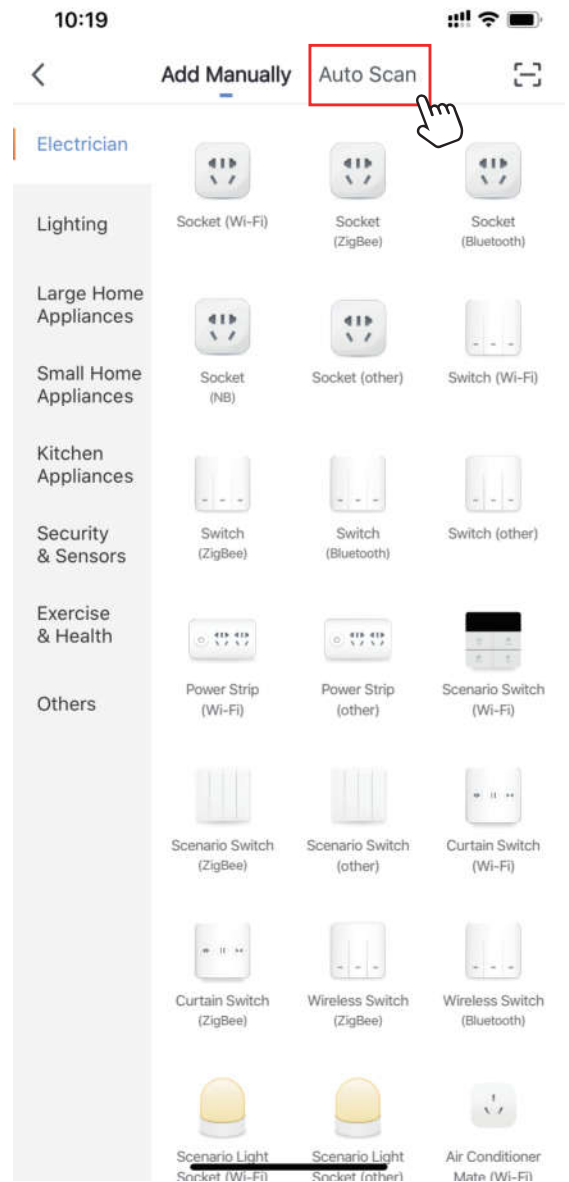


(6) Give a name to the hub and tap 'Done'.

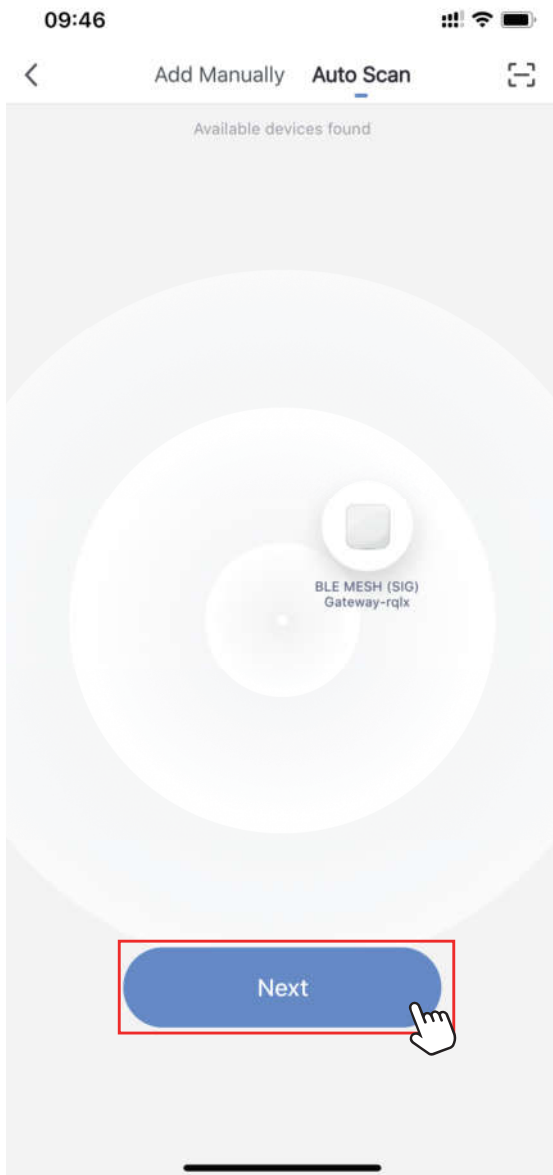
## 2) Option Two



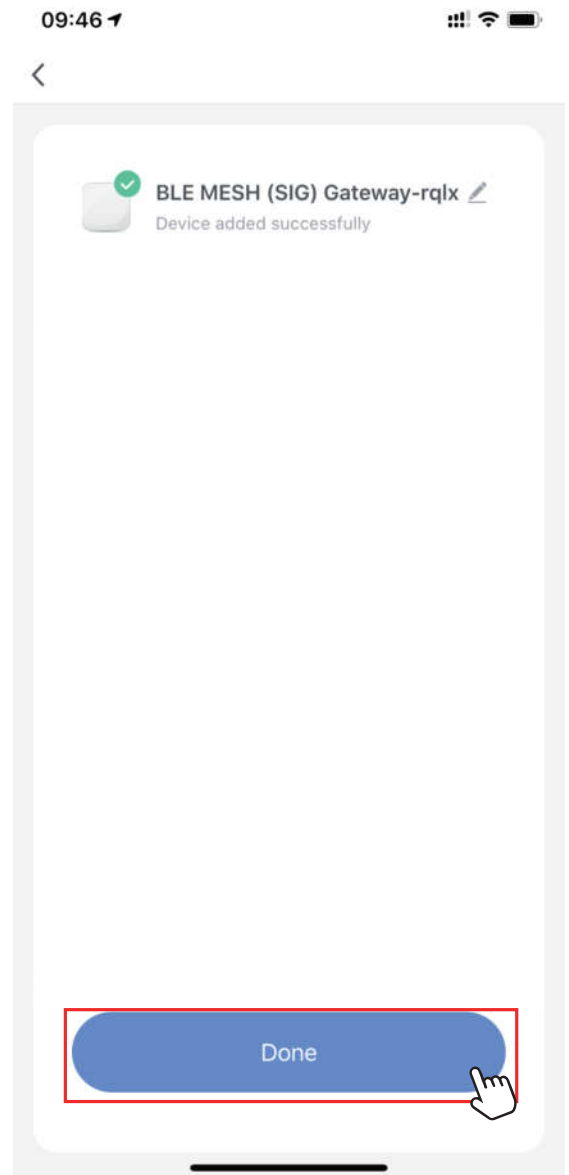
(1) Tap '+' button on top right corner to enter next page.



(2) Tap 'Auto Scan' to enter next page.

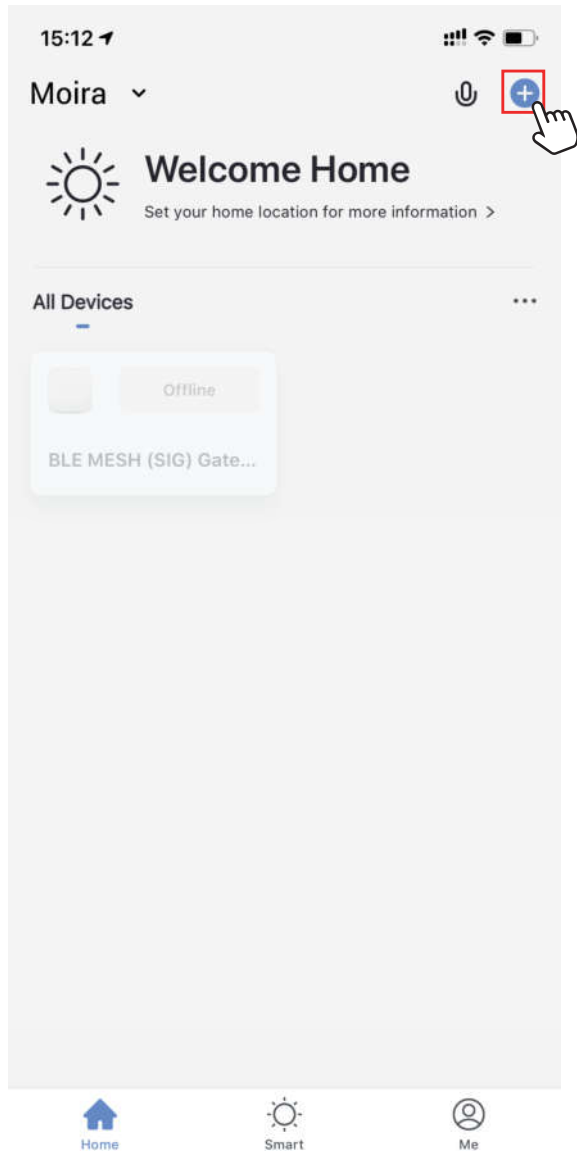


(3) When the page shows 'BLE MESH (SIG) Gateway-rqlx', tap 'Next'.



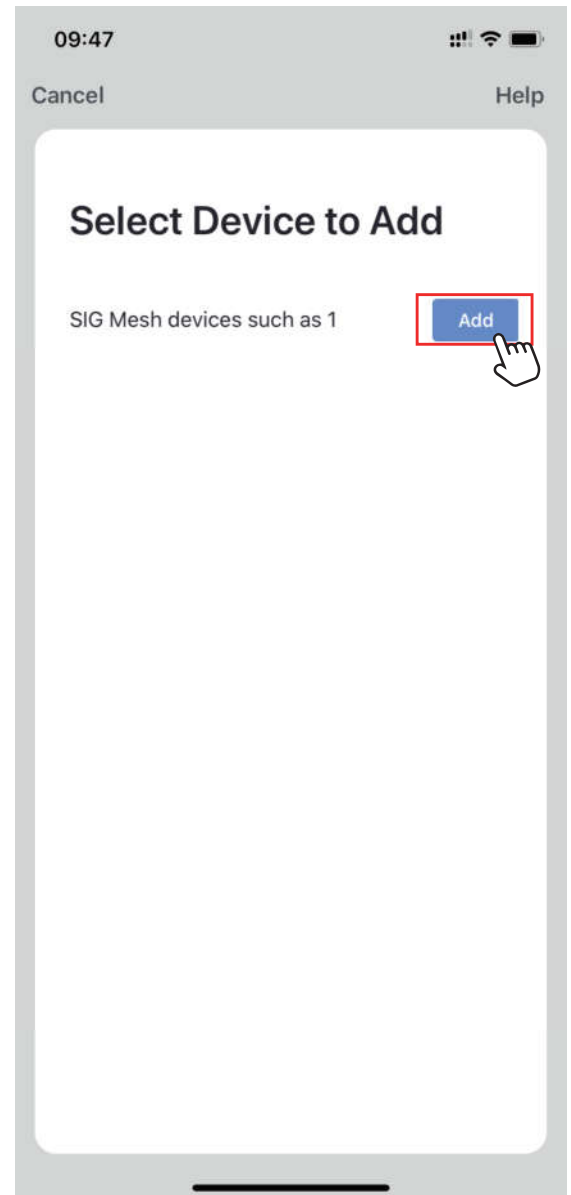
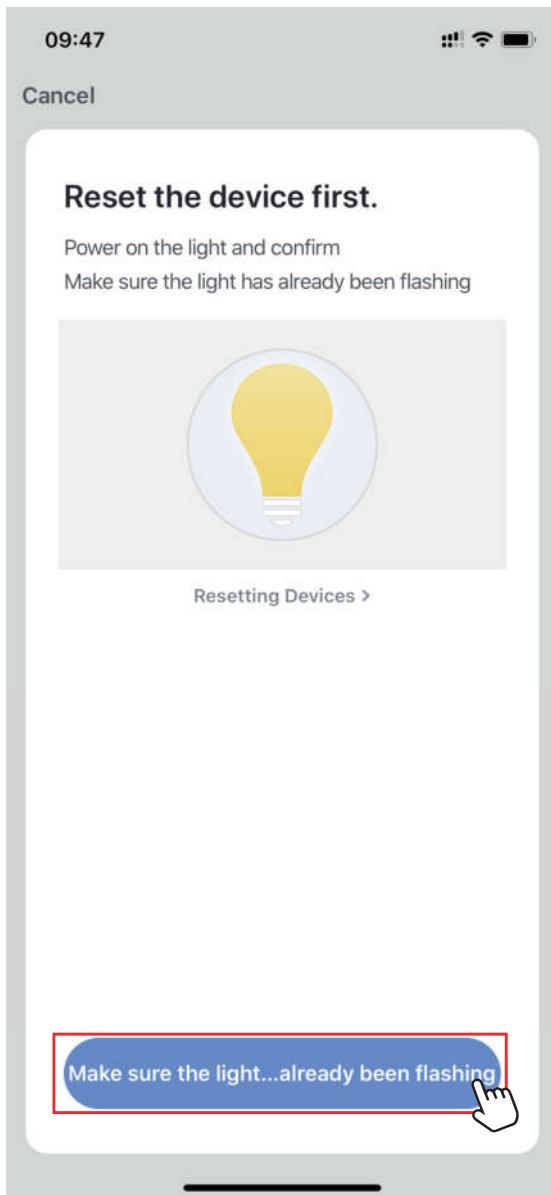
(4) Rename it and tap 'Done'.

## 2. Pair Smart Life App to the Floodlight.



(1) Tap '+' button on top right corner to enter next page.

(2) Tap 'Smart Lighting', then choose 'Lighting Device(Bluetooth)' to add the Floodlight.



(3) Power on the spotlight. Repeatedly plug on-off-on-off-on-off-on the Floodlight to activate it into rapid blinking status (about 0.5s per blink). Wait till the Floodlight no longer blinks, click the confirm button on this page.

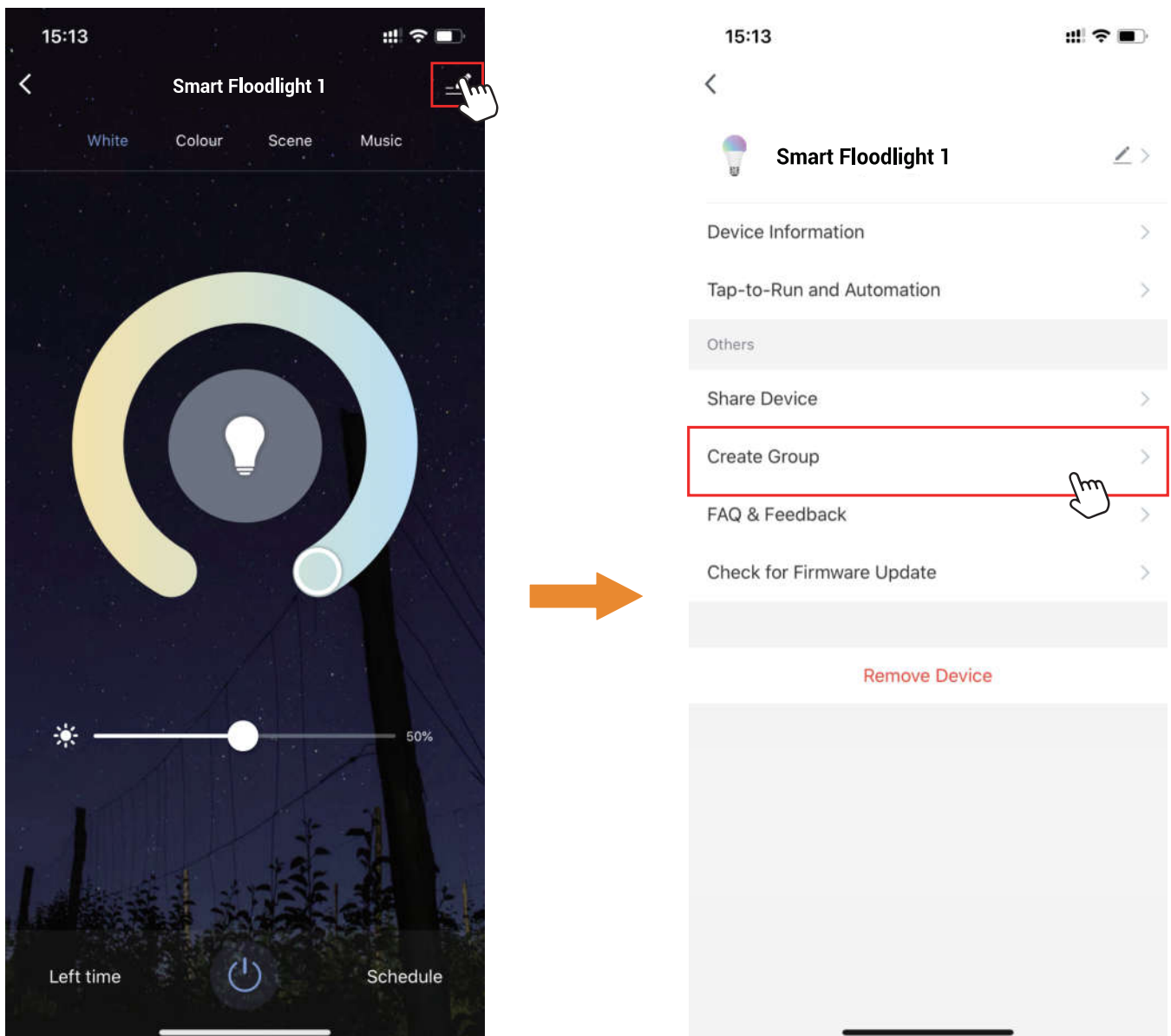
(4) Discover the lighting device and click 'Add'.

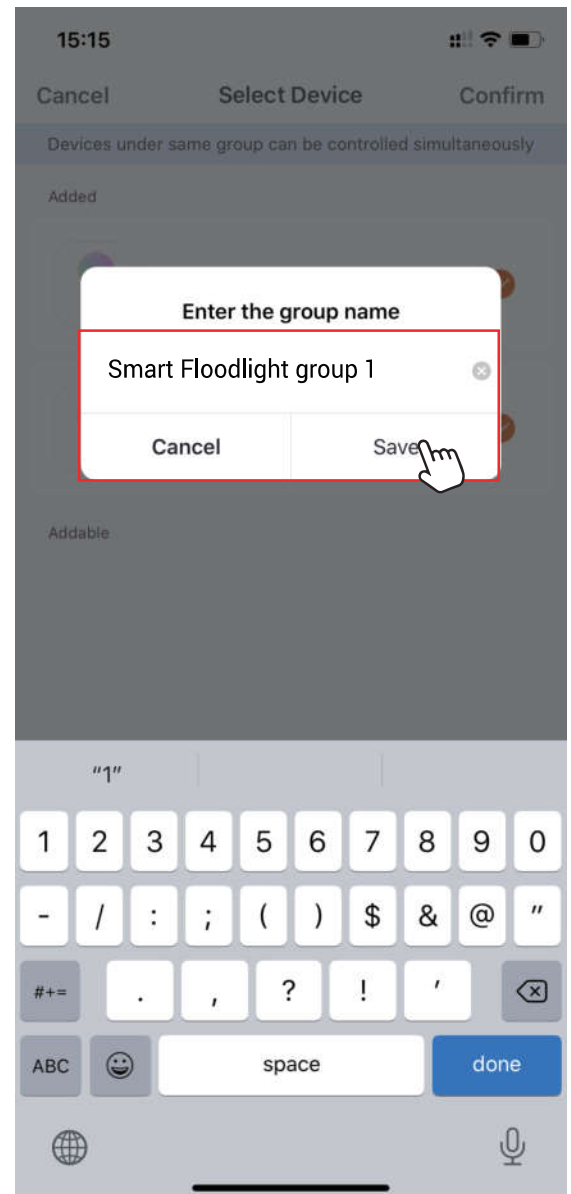
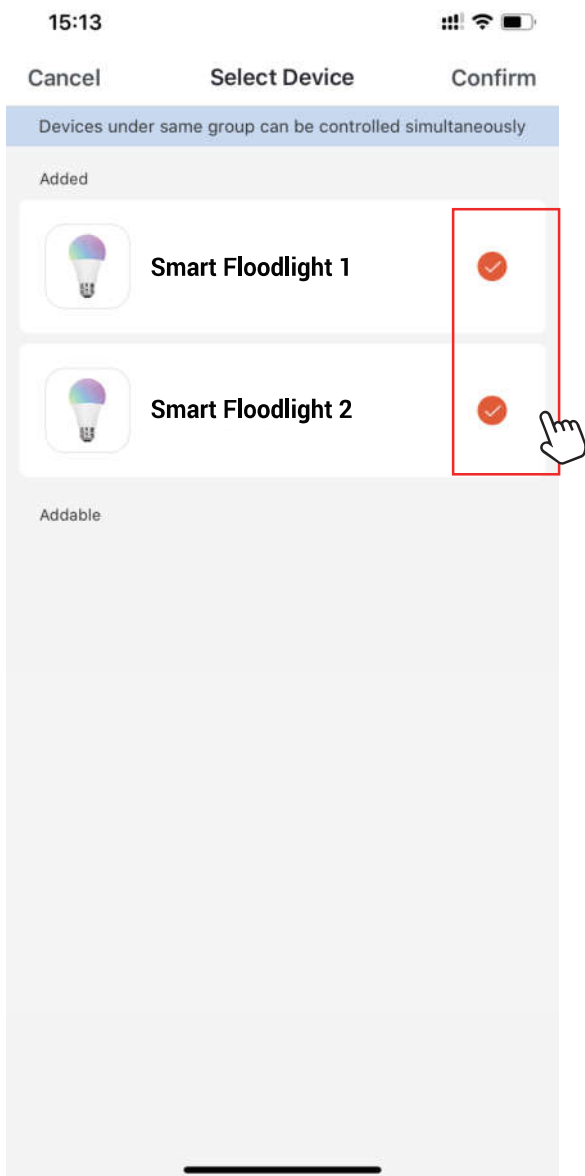


## How to group the Floodlight?

Make sure all the lights have been paired to “smart life” app, then group the lights by following these steps.

1. Choose any light on the app, click the edit button on the top right corner, then click “Create Group” .
2. Choose the lights you want to group from the device list and rename the group.



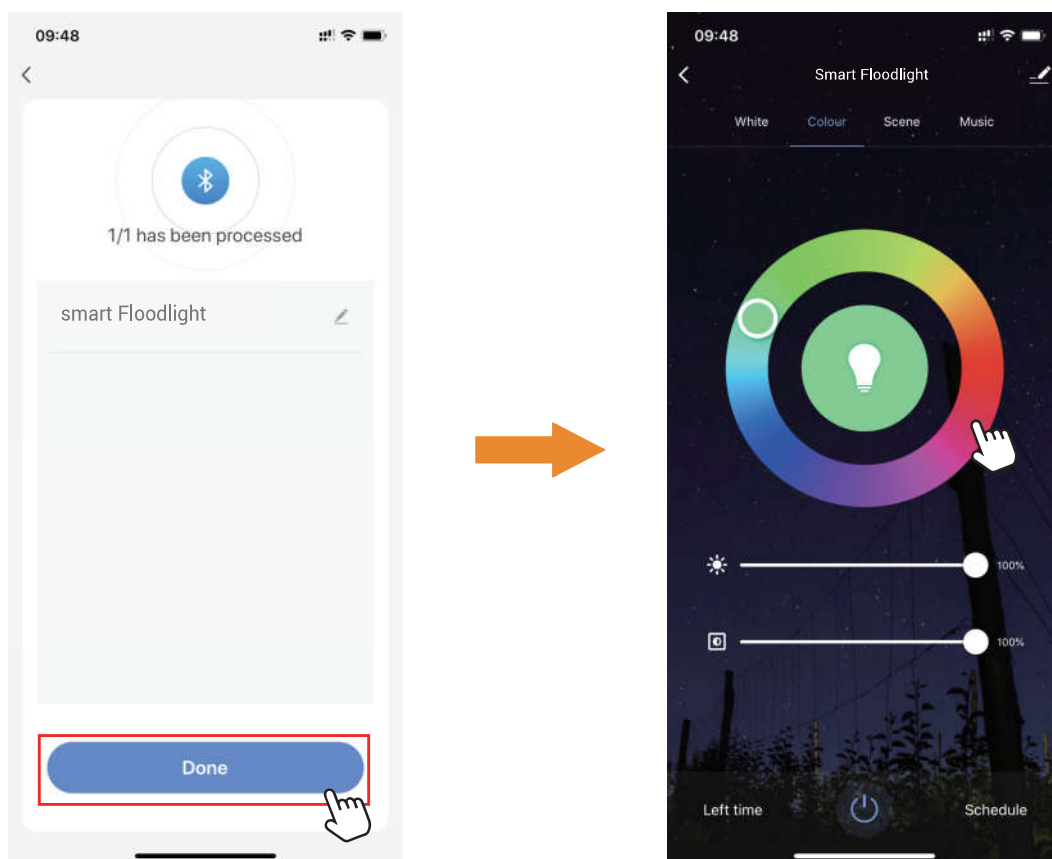


**Step D : Give a name to the Floodlight.**

- A simple name is recommended for easier voice recognition with Alexa or Google Assistant.
- The name given to the Floodlight will be the same for voice control on Alexa or Google Assistant. For example, the Floodlight is named 'smart Floodlight' on this manual.

**Step E : The named Floodlight will be shown on the app homepage.**

Now you can control the Floodlight (turn on/off, change colors, adjust brightness ect) with Smart Life on the setting page. Turn on or off the Floodlight by tapping the bulb icon.



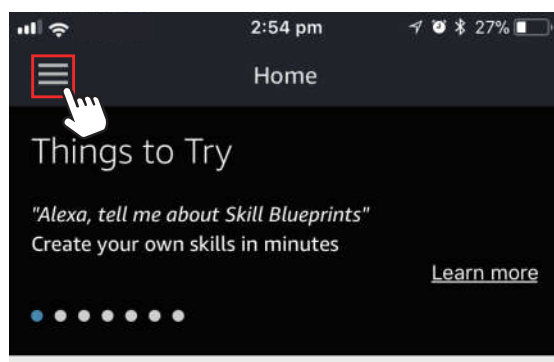
Note: To control the Floodlight with Amazon Alexa, please read Part Three. To control the Floodlight with Google Assistant, please read Part Four directly.

## Part Three - How to control the Floodlight with Amazon Alexa?



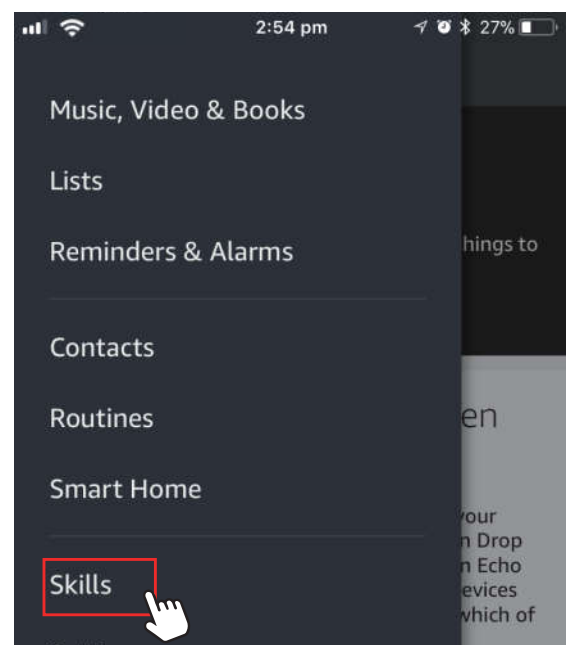
Please make sure that your Alexa app is connected to Echo, and both work well under your WiFi network.

**Step A :** Log in your Alexa App, tap top left corner, and tap 'Skills'.

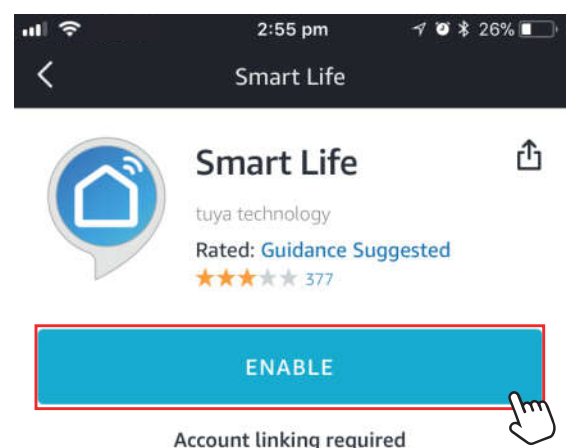
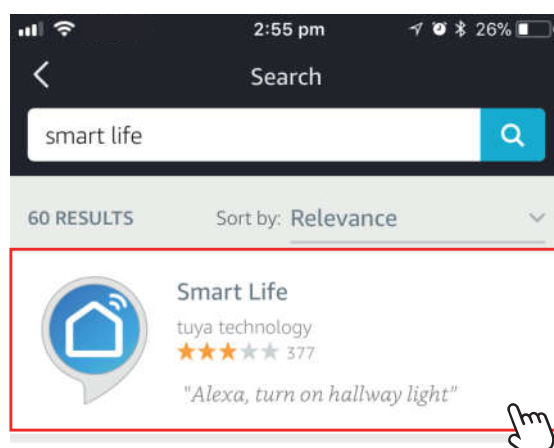


Your Alexa settings have been updated

Household Drop In was enabled from one of your Echo devices or from the Alexa app. The opt-in Drop In feature lets you automatically connect to an Echo device for a voice or a video chat. Your Echo devices with a screen and the Alexa app will indicate which of your other devices are recently active.



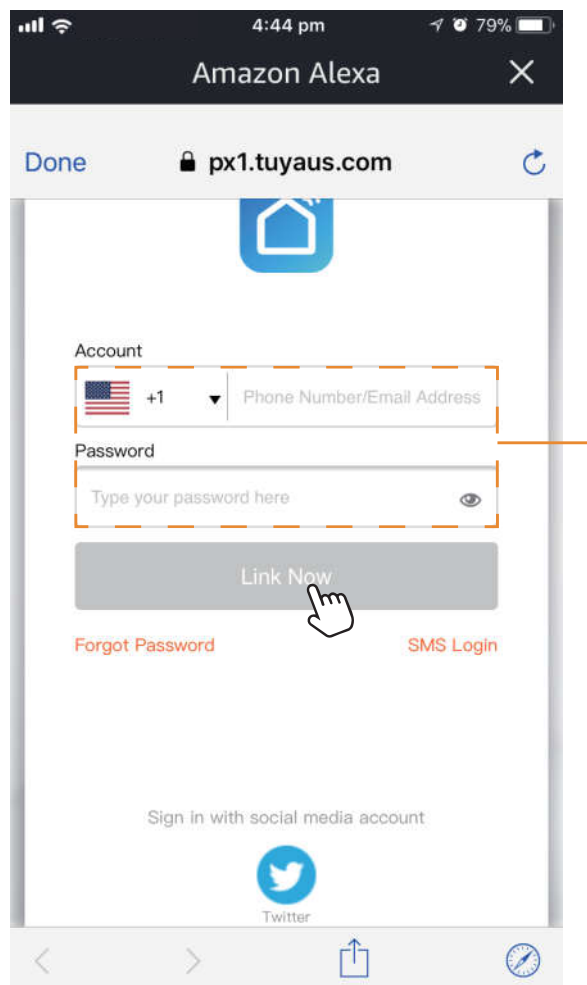
**Step B :** Type 'Smart Life', find 'Smart Life' from the search result and tap it to enable the skill.



**Step C :** Enter your Smart Life App account and password. Tap 'Link Now', then tap 'Authorize' on the next page to bind Smart Life account to Alexa.

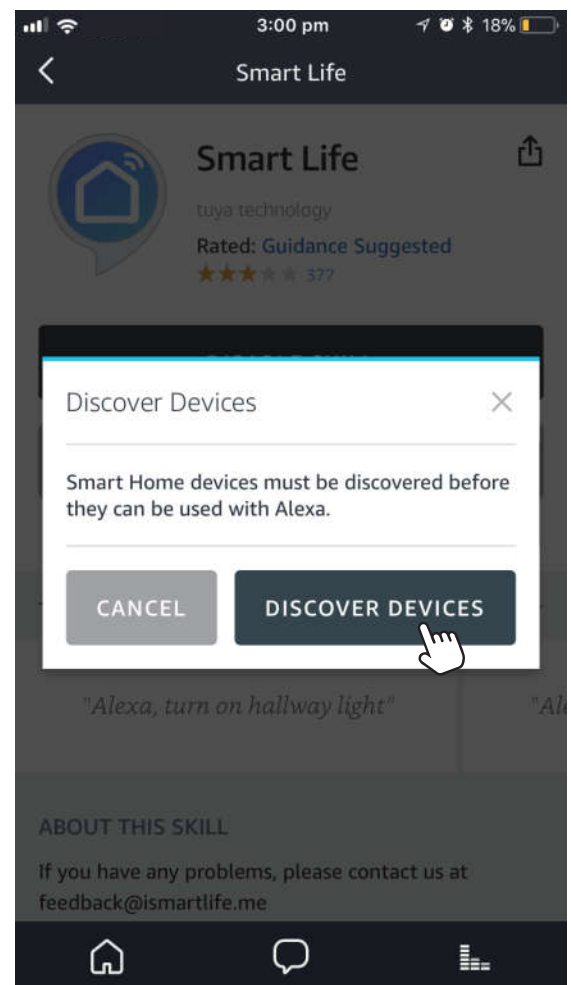
**Step D :** When your Smart Life account is bound to Alexa, tap 'DISCOVER DEVICES' to detect the spotlight.

### Step C



Same account and password  
as Smart Life App

### Step D

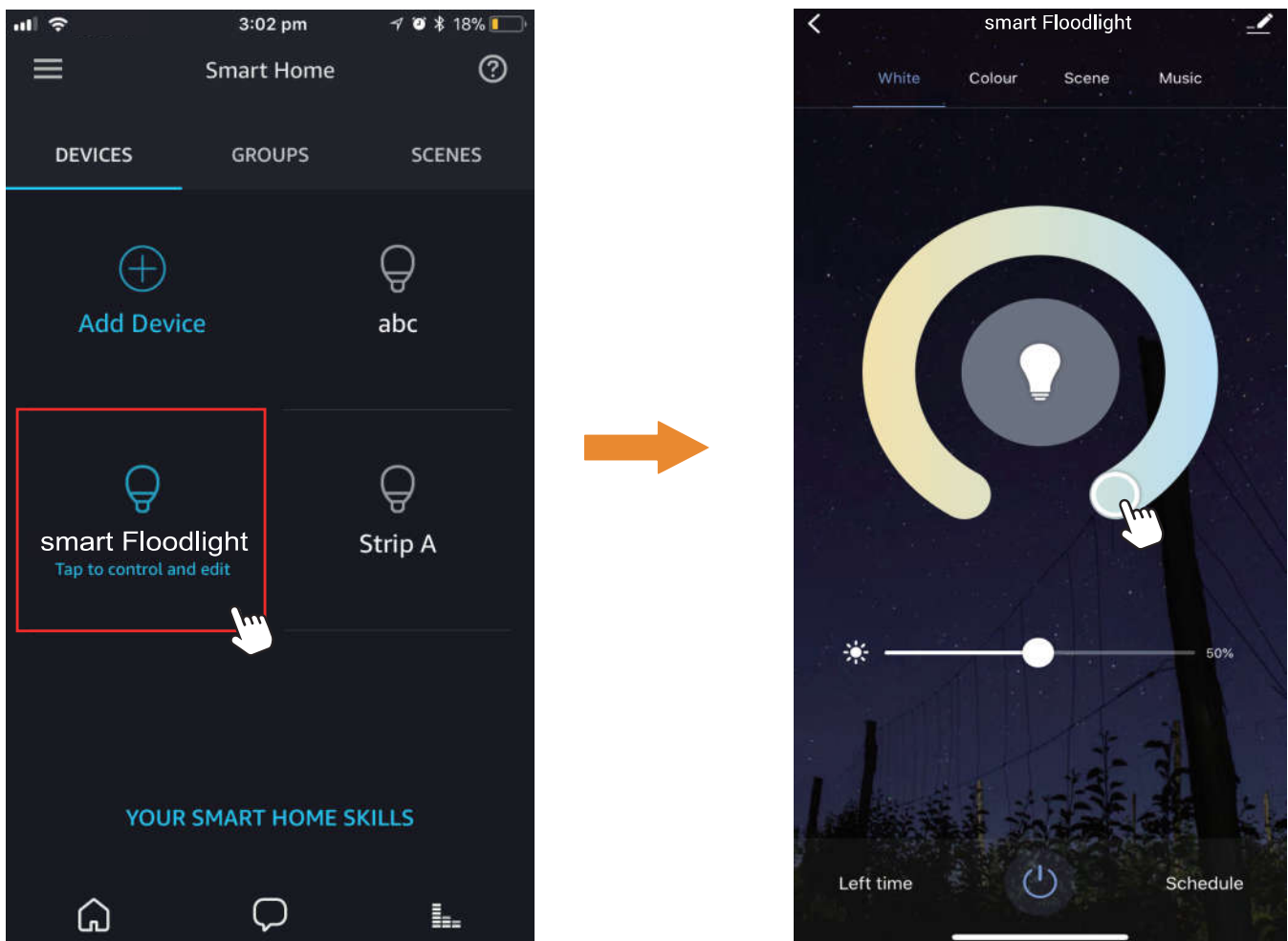


**Step E :** When the named Floodlight is paired to Alexa from Smart Life, it will show on the device page (see the 'smart spotlight' example ).

**Step F :** Now you can control the Floodlight with Alexa App on the setting page. To turn on or off the spotlight, simply tap the bulb icon.

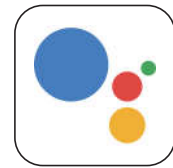
**Step G :** You can also voice control the Floodlight with Alexa by giving these commands: "Alexa, turn on 'device name' ", "Alexa, set 'device name' to 'color' ", "Alexa, set 'device name' to 'number' ".

Device name is the one you give to the Floodlight. The Floodlight is named 'smart Floodlight' in this manual. For example, "Alexa, turn on 'smart Floodlight' ", "Alexa, set 'smart Floodlight' to 'blue' " etc.



**Note:** To control the Floodlight with Google Assistant, please continue to read Part Four.

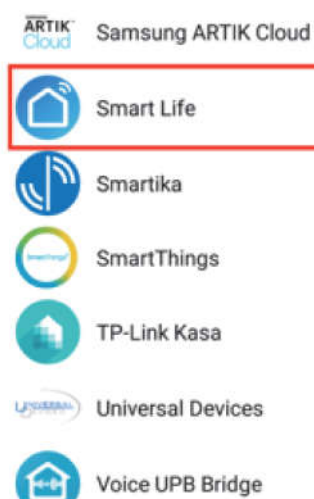
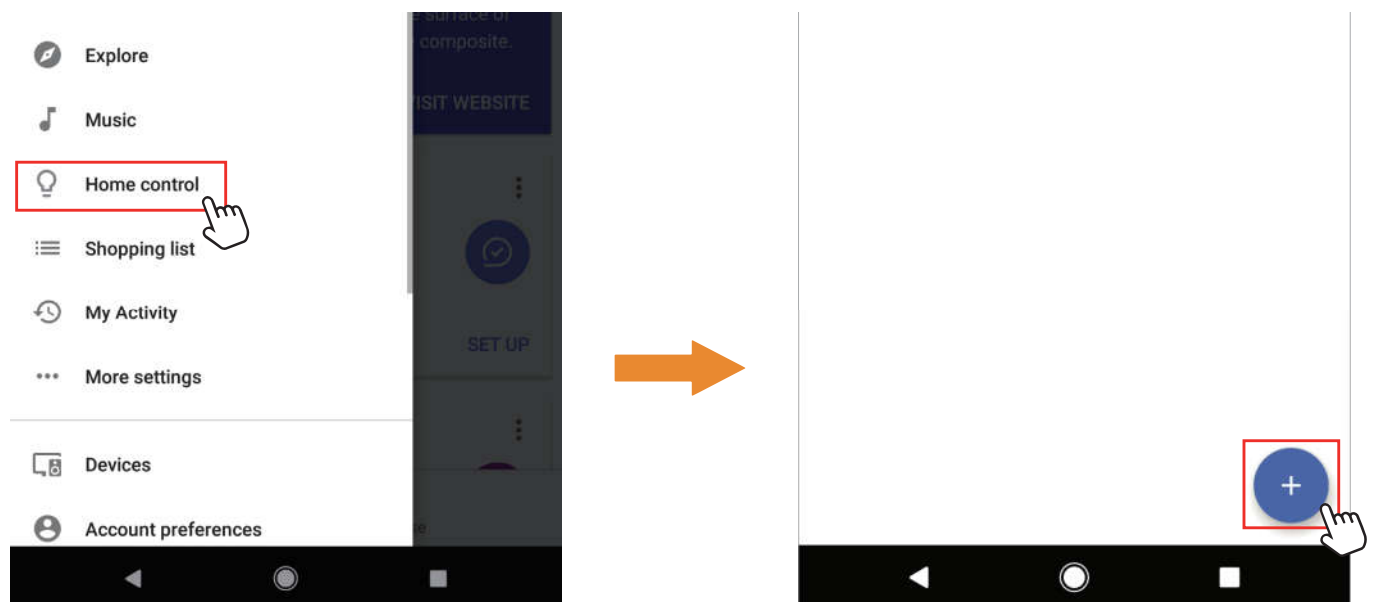
## Part Four - How to control the Floodlight with Google Assistant?



**Step A :** Login Google Assistant App, tap 'Home Control' on the left side bar page.

**Step B :** Tap '+' button on the bottom right to enter next page.

**Step C :** Find 'Smart Life' from side bar list.

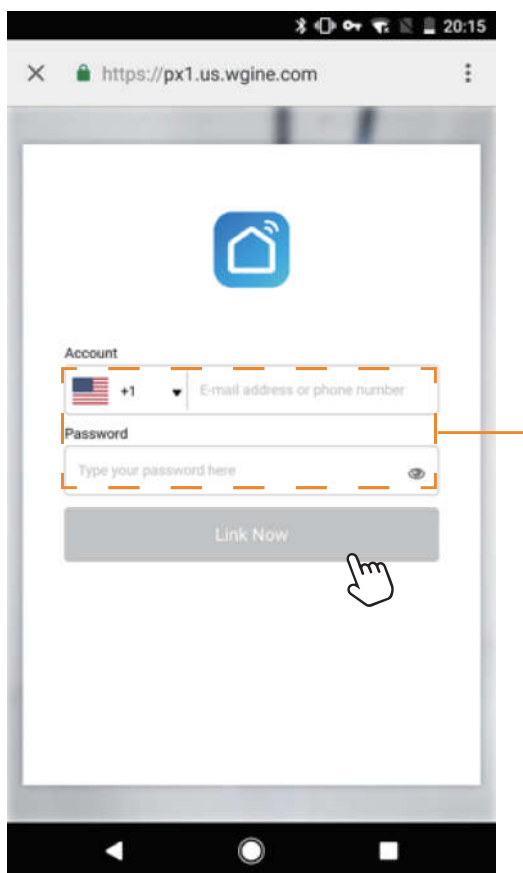


**Step D :** Enter your Smart Life App account and password to bind Smart Life account to Google Assistant.

**Step E :** You will find the named Floodlight shows on the Home Control page. Now you can control the spotlight on Google Assistant App, or voice control it by giving these commands: “ok Google, turn on ‘device name’ ”, “ok Google, set ‘device name’ to ‘color’ ”, “ok Google, set ‘device name’ to ‘number’ ”.

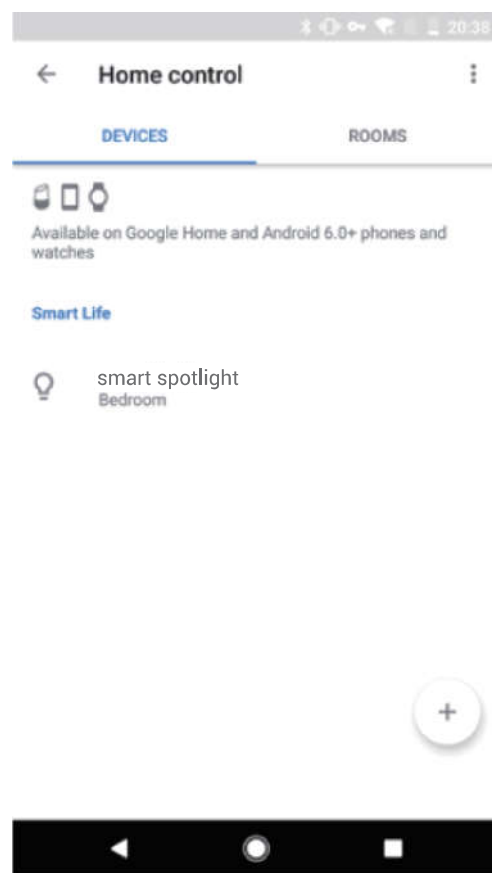
Device name is the one you give to the Floodlight. The Floodlight is named ‘smart Floodlight’ in this manual. For example, “ok Google, turn on ‘smart Floodlight’ ”, “ok Google, set ‘smart Floodlight’ to ‘blue’ ” etc.

### Step D



Same account and password  
as Smart Life App

### Step E





## **FCC Warning:**

Any Changes or modifications not expressly approved by the party responsible for compliance could void the user's authority to operate the equipment.

This device complies with part 15 of the FCC Rules. Operation is subject to the following two conditions:

- (1) This device may not cause harmful interference, and
- (2) This device must accept any interference received, including interference that may cause undesired operation.

Note: This equipment has been tested and found to comply with the limits for a Class B digital device, pursuant to part 15 of the FCC Rules. These limits are designed to provide reasonable protection against harmful interference in a residential installation. This equipment generates uses and can radiate radio frequency energy and, if not installed and used in accordance with the instructions, may cause harmful interference to radio communications. However, there is no guarantee that interference will not occur in a particular installation. If this equipment does cause harmful interference to radio or television reception, which can be determined by turning the equipment off and on, the user is encouraged to try to correct the interference by one or more of the following measures:

- Reorient or relocate the receiving antenna.
- Increase the separation between the equipment and receiver.
- Connect the equipment into an outlet on a circuit different from that to which the receiver is connected.
- Consult the dealer or an experienced radio/TV technician for help.

This equipment complies with FCC radiation exposure limits set forth for an uncontrolled environment. This equipment should be installed and operated with minimum distance 20cm between the radiator & your body.



## Contact Us

Any questions?

Our lovely customer service team is always there for you.

Please reach us via

 **support@mustwin.ltd**

Manufactured by Shenzhen Michuang Technology Ltd.

Address: Rm.1012, A Bldg., No.142, Meilong St., Longhua District,  
Shenzhen, CHINA 518000

The logo features the brand name 'MustWin' in a bold, white, sans-serif font, centered within a large, solid orange hexagon. The hexagon is positioned in the center of the page. Surrounding this central element are several smaller orange hexagons of varying sizes and opacities, some appearing as outlines and others as solid shapes, scattered across the white background.

# MustWin

✉ [support@mustwin.ltd](mailto:support@mustwin.ltd)

FC RoHS IP65 CE 