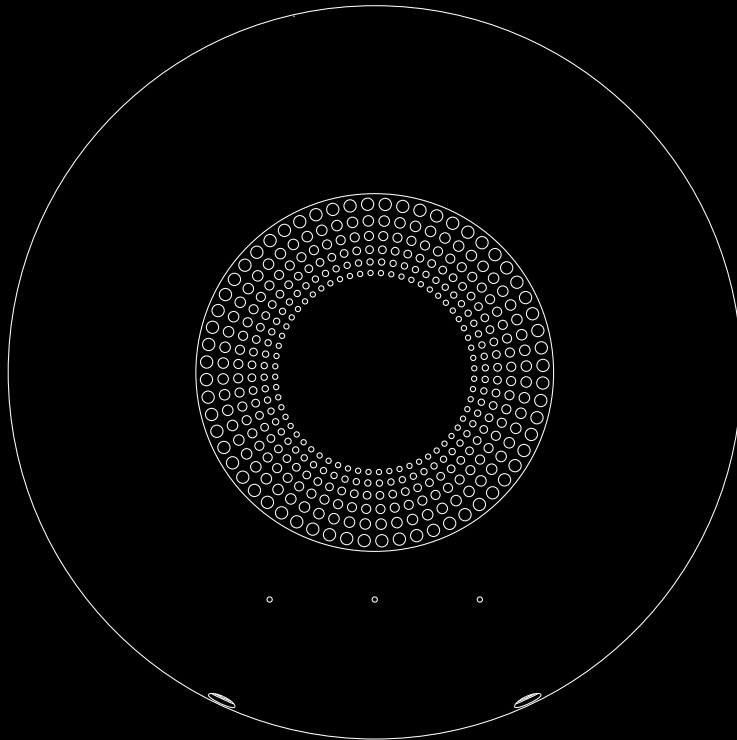
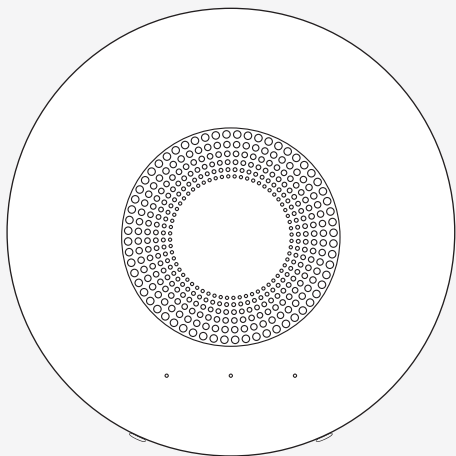


Quick start guide



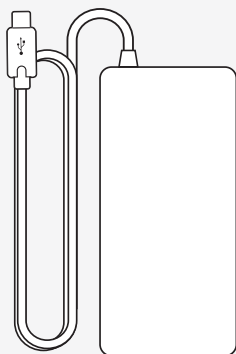
What's included



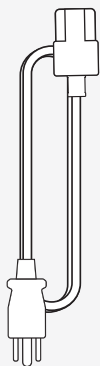
E1



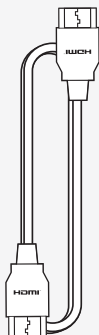
Air Mouse Remote



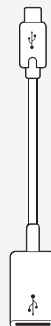
USB-C
Power Supply



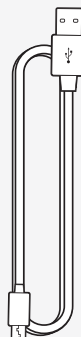
U.S.
Power Cable



HDMI
Video Cable

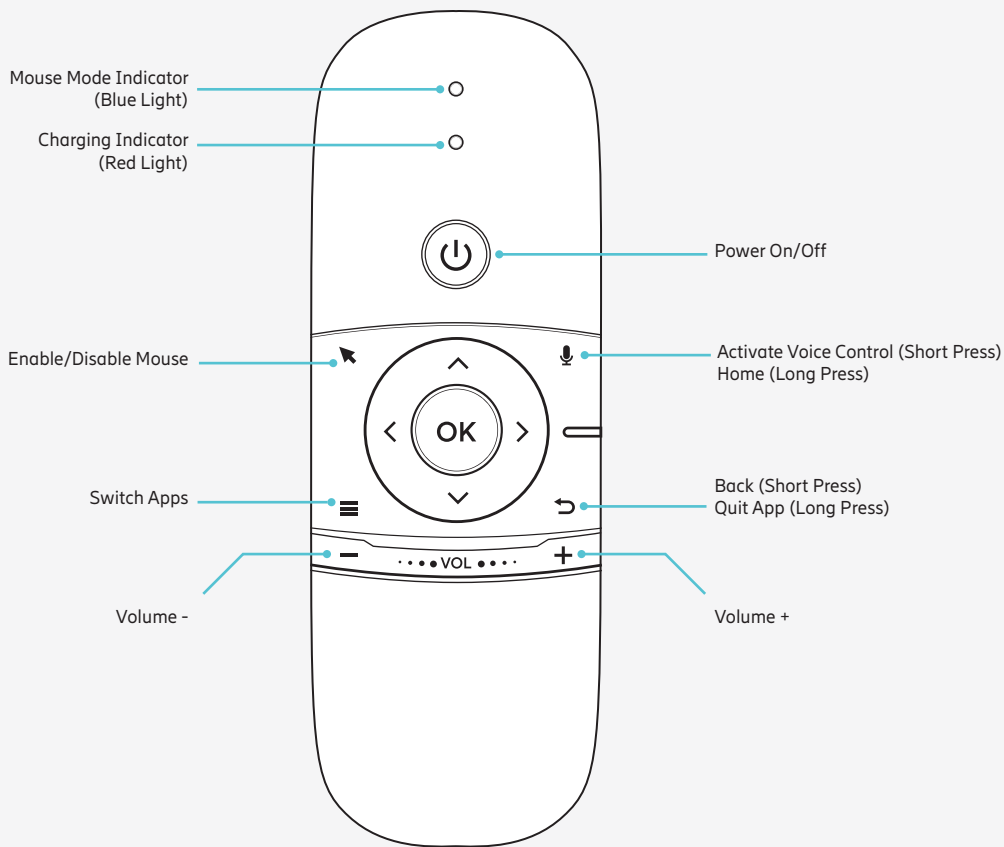


USB-C to
USB-A Adapter



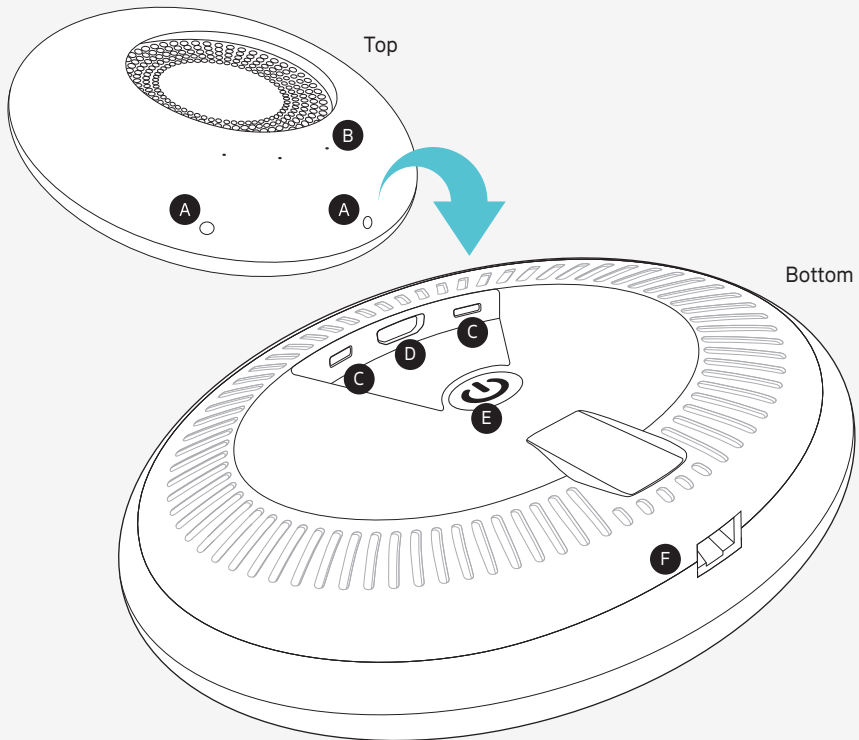
Remote Control
Charging Cable

Air Mouse Remote



1

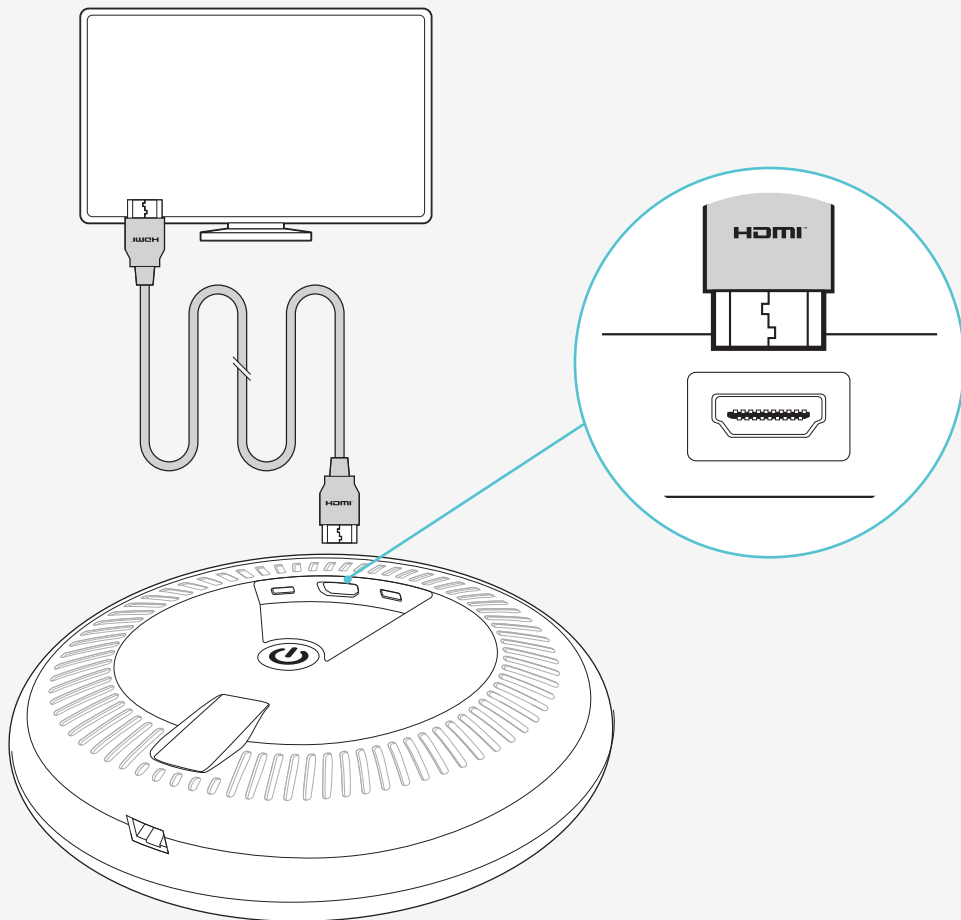
Turn your E1 upside down



- A Cameras
- B Microphones
- C USB-C ports
- D HDMI port
- E Power Button
- F Ethernet port(s) (if you have a router unit, it has two Ethernet ports)

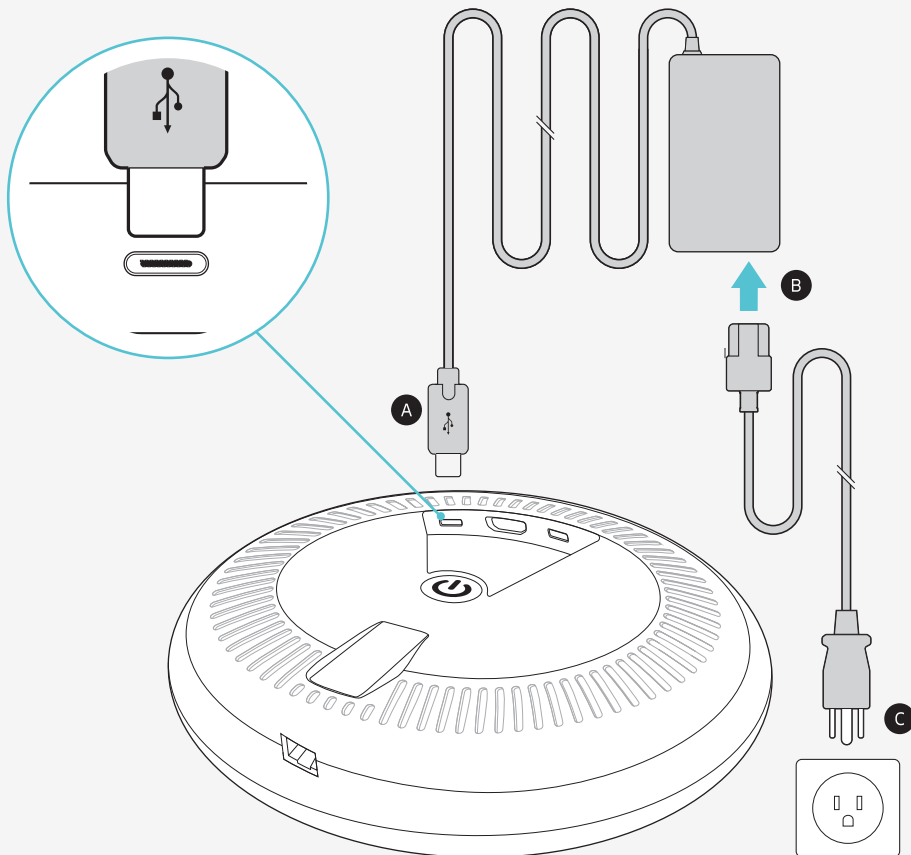
2

Connect the HDMI cable to your TV



3

Connect the Power Supply



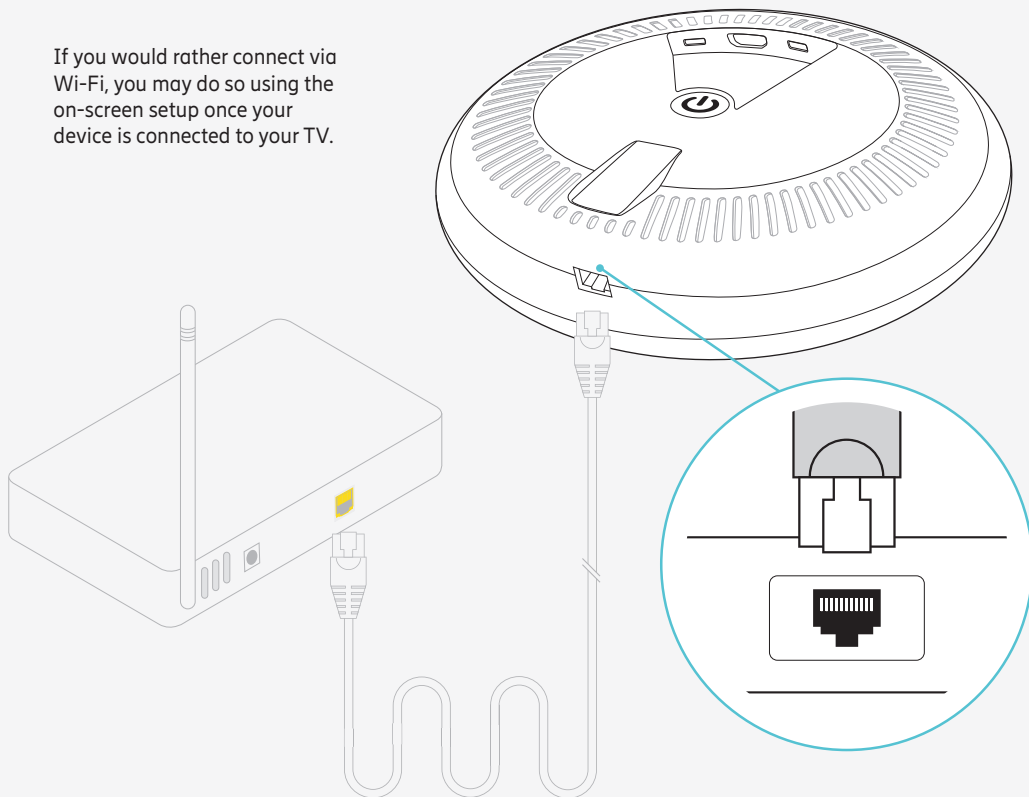
- A Connect Power Supply cable to USB-C port on E1
- B Connect Power cable to Power Supply
- C Plug into wall outlet



Connect via Ethernet

(optional)

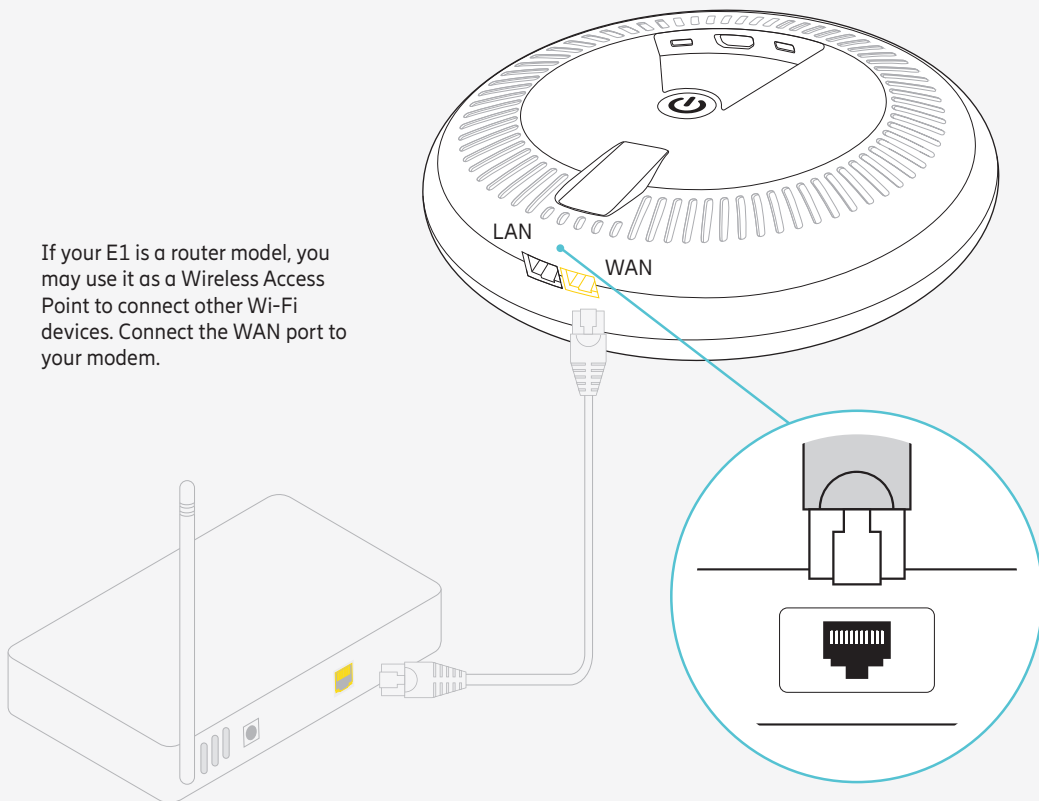
If you would rather connect via Wi-Fi, you may do so using the on-screen setup once your device is connected to your TV.





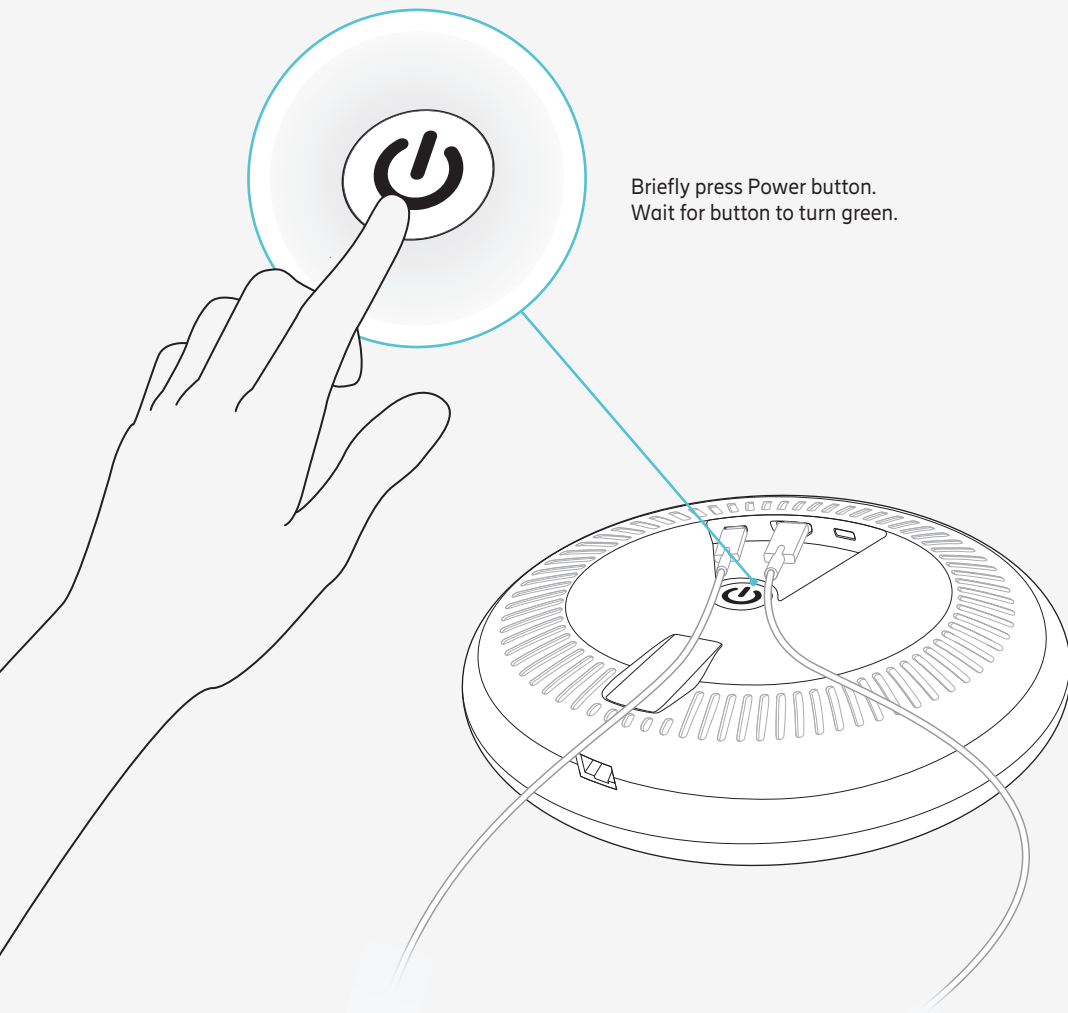
Use your E1 as a Wireless Access Point (optional)

If your E1 is a router model, you may use it as a Wireless Access Point to connect other Wi-Fi devices. Connect the WAN port to your modem.



4

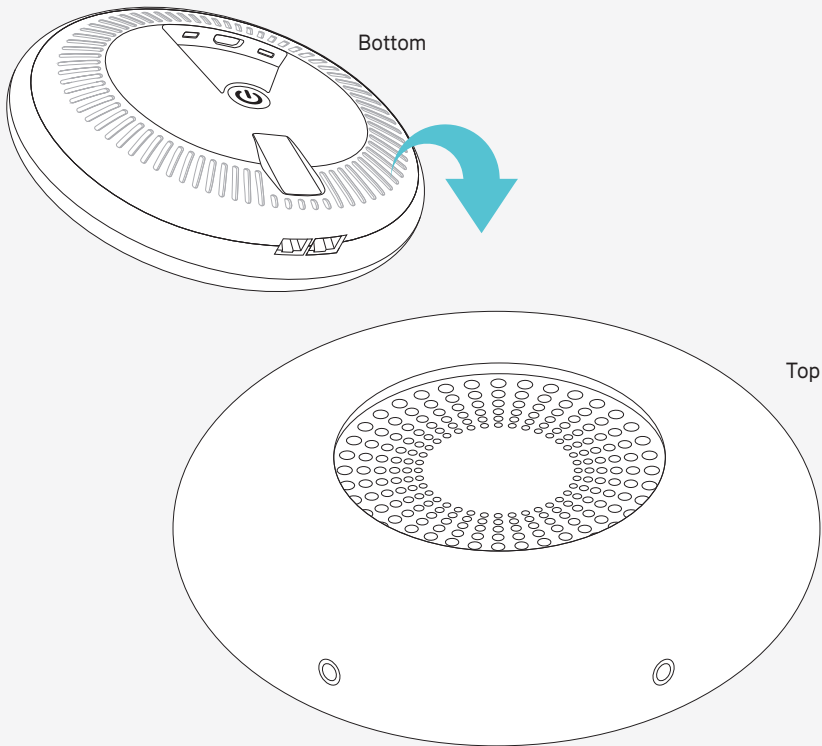
Power on



Briefly press Power button.
Wait for button to turn green.

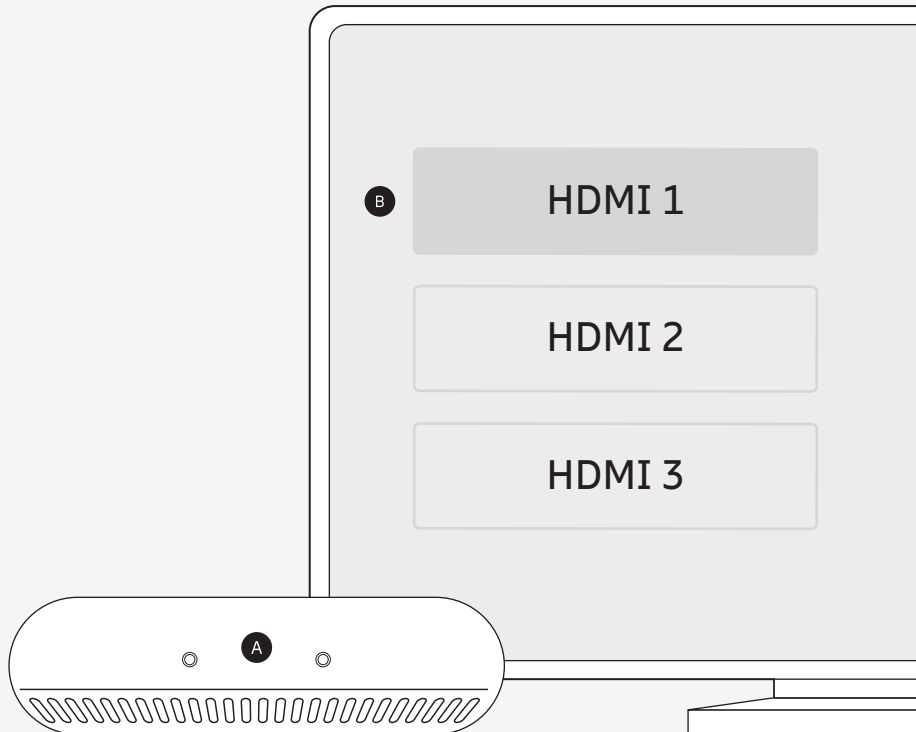
5

Turn your E1 right side up



6

Placement

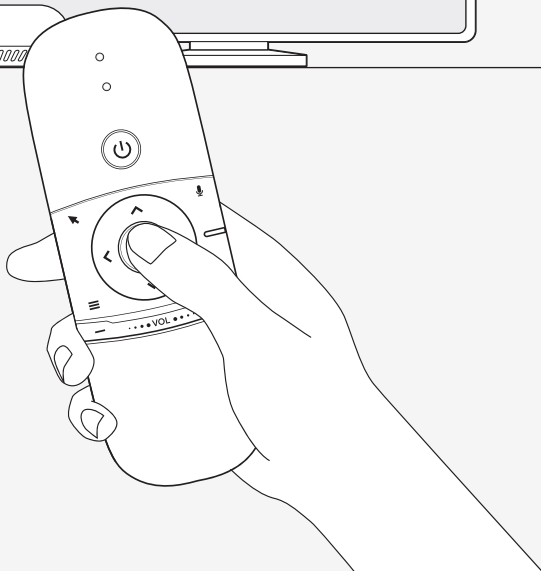
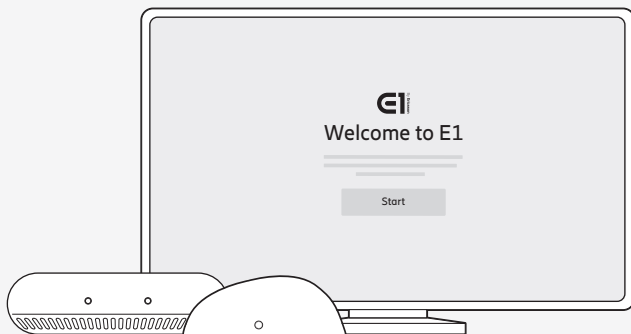


- A Position E1 right side up with cameras facing forward.
Ensure the cameras have an unobstructed view of the room.
- B Power on your TV, then select the HDMI input connected to your E1



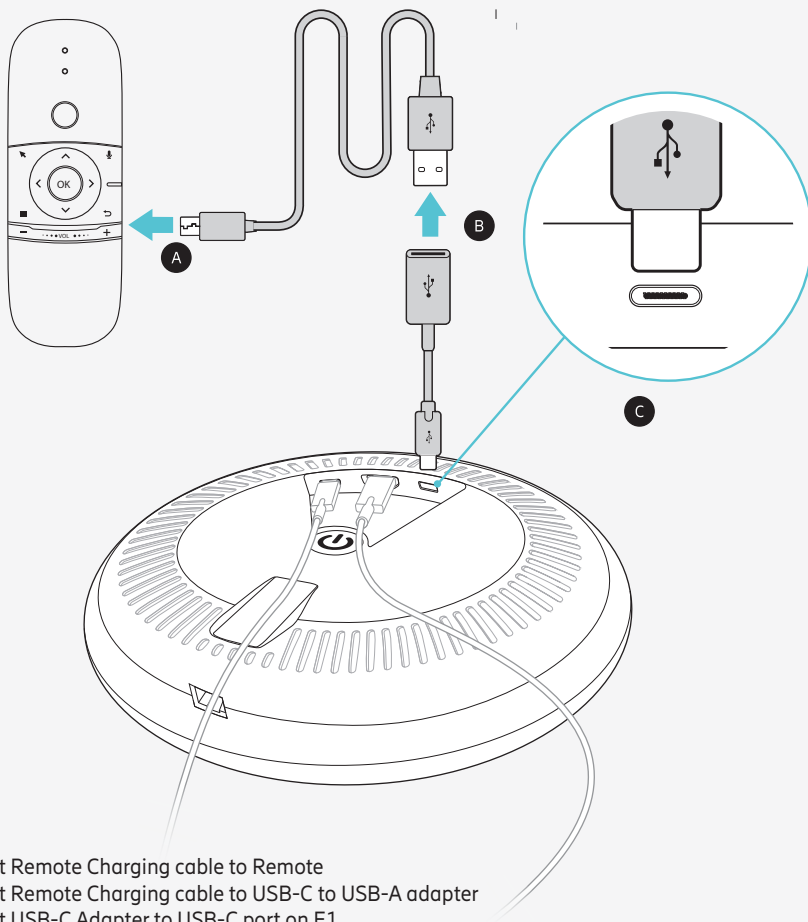
Success

Setup screen should appear on your TV.
Press "OK" on the Air Mouse Remote to begin.
Follow the instructions on your screen.





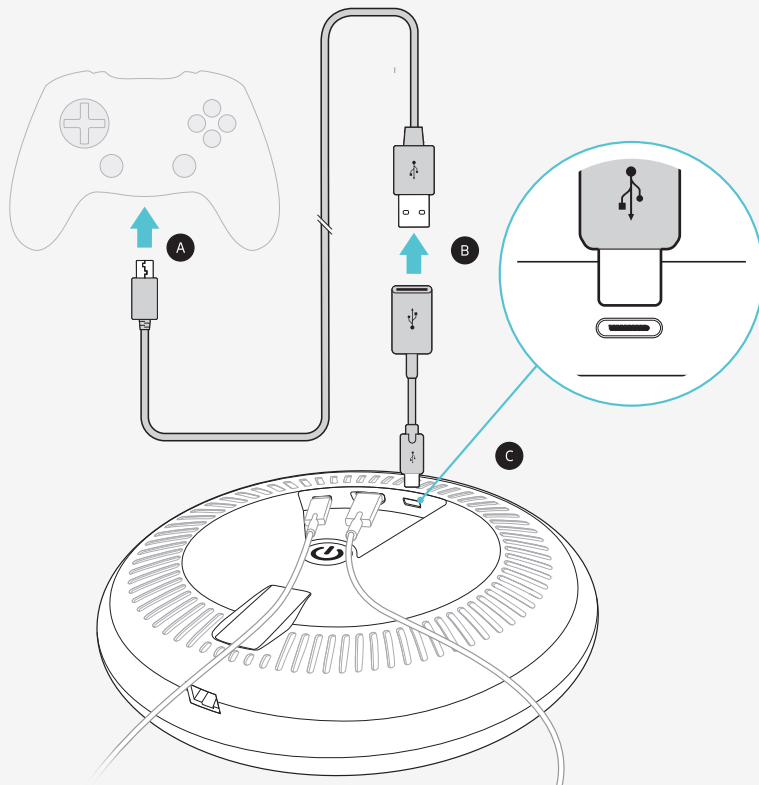
Charging your Air Mouse Remote





Charging a Game Controller

(Game controller not included)



- A Connect Game Controller cable to Game Controller
- B Connect Game Controller cable to USB-C to USB-A adapter
- C Connect USB-C Adapter to USB-C port on E1


Common Questions

Why do I see a “No Input” message on my TV and not a picture?

The input/source on your TV might not be set up correctly. Not to worry, there's a quick fix. Just press the "input" or "source" button on your TV remote until you select the HDMI connection that matches the port your HDMI cable is plugged into on your TV.

Why does my Air Mouse Remote cursor behave the way it does?

If your Air Mouse Remote cursor moves freely around the screen, it is in mouse mode. You can also tell by the Mouse Mode Indicator which is the blue LED on the remote. Use the Enable/Disable Mouse button to turn off Mouse Mode.

Enable/Disable Mouse button 

How do I pair my Air Mouse Remote with my E1?

The Air Mouse Remote is pre-paired to the E1. If you notice the Mouse Mode Indicator flash slowly, [Blue Light on the remote] pairing has been lost.

To re-pair:

- Turn off your E1 and unplug power
- Simultaneously press Volume + and – keys on remote until blue LED indicator flashes rapidly.
- Plug in and power up your E1

LED will light solid blue when remote is paired. (Rapid flashing stops)

To verify the Air Mouse Remote is paired:

- Press navigation keys or
- Press mouse arrow button

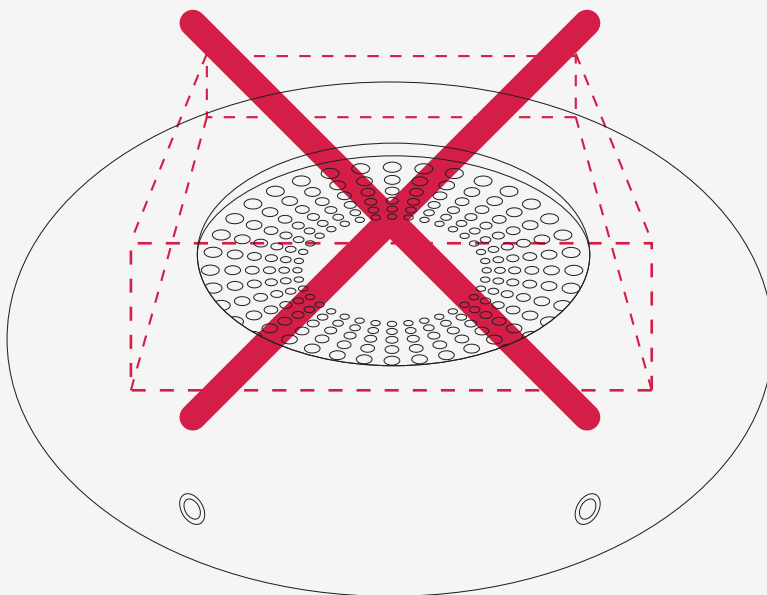
LED will light solid blue

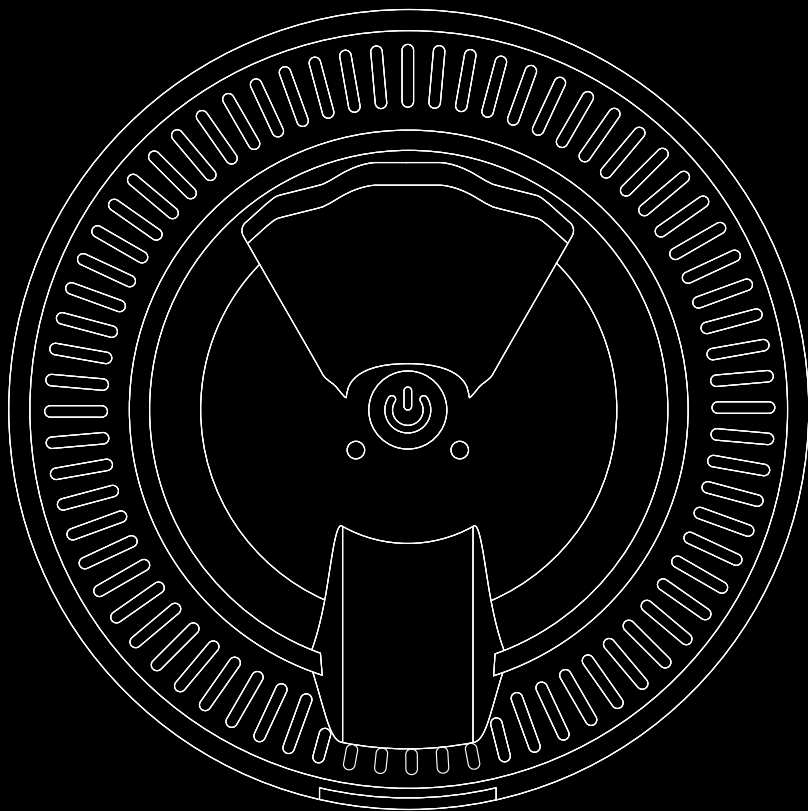


Do not cover

Keep the vents of your E1 open.

To prevent overheating, do not cover or place objects on top.





Regulatory Information

Federal Communication Commission Interference Statement

This equipment has been tested and found to comply with the limits for a Class B digital device, pursuant to Part 15 of the FCC Rules. These limits are designed to provide reasonable protection against harmful interference in a residential installation. This equipment generates, uses and can radiate radio frequency energy and, if not installed and used in accordance with the instructions, may cause harmful interference to radio communications. However, there is no guarantee that interference will not occur in a particular installation. If this equipment does cause harmful interference to radio or television reception, which can be determined by turning the equipment off and on, the user is encouraged to try to correct the interference by one of the following measures:

- Reorient or relocate the receiving antenna.
- Increase the separation between the equipment and receiver.
- Connect the equipment into an outlet on a circuit different from that to which the receiver is connected.
- Consult the dealer or an experienced radio/TV technician for help.

FCC Caution: Any changes or modifications not expressly approved by the party responsible for compliance could void the user's authority to operate this equipment.

This device complies with Part 15 of the FCC Rules. Operation is subject to the following two conditions: (1) This device may not cause harmful interference, and (2) this device must accept any interference received, including interference that may cause undesired operation.

IMPORTANT NOTE:

FCC Radiation Exposure Statement:

This equipment complies with FCC radiation exposure limits set forth for an uncontrolled environment. This equipment should be installed and operated with minimum distance 20cm between the radiator & your body.