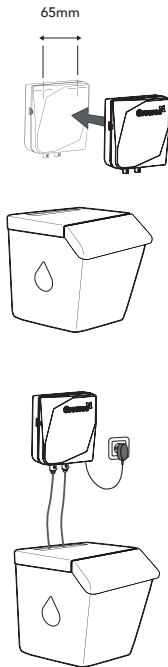


## Installation:

1. Place the device above your water reservoir. Make sure the sensors are able to reach inside the water (cord lengths are 3 meters each).
2. Drill and place 2 screws to hang the device using the screw hangers (10)  
(Distance between holes is 65mm)
3. Attach the pH (4, 12) and EC (3, 11) + Water temp. (2, 11) sensors and put them in the water.
4. Connect the device to a power supply (1, 13). The light indicator (6) will blink in green.



## Connect the Hydro Master to a WiFi network:

1. On your mobile device, go to WiFi networks and connect to the device's network (Growee\_####)
2. Press on the pop-up message "Tap to connect to Growee\_####"
3. On the new opened window, press "Login"
4. Choose the desired WiFi network from the list. If the network doesn't show, press "Scan"
5. Enter the network's password
6. Enter the device's registration code
7. Press "Finish". Your device is now connected to a WiFi network. The light indicator will show full green and stop blinking.

### Changing the WiFi network:

The device connects automatically to the last WiFi network it was connected to. To change the

network, press and hold the reset button (7) until the light indicator starts to blink again. You can now re-connect the device to another network.

\* If your WiFi network isn't stable you can connect your Growee device to the internet using an ethernet cable.

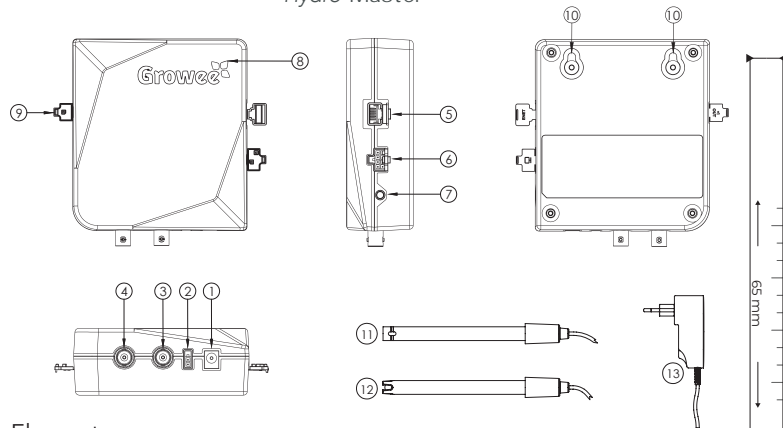
## Using the app

1. Download the Growee app from Google Play (android) or the Apple App Store (ios) or go to: [www.mygrowee.com](http://www.mygrowee.com)
2. Create an account by signing up
3. Press "Add new device" and enter your device's registration code
4. Complete the set-up process to define your grow-settings.

You will only be able to access the app features after the set-up process has completed. you can edit your grow settings at any time.

# Quick start guide

## Hydro Master



### Elements:

1. Power adapter input
2. EC (Temp.) input
3. EC probe input
4. pH probe input
5. Ethernet/LAN input
6. Technician access
7. Reset button

8. Light indicator
9. Add-ons output
10. Screw hangers
11. EC probe
12. pH probe
13. Power adapter

### Warnings:

- Keep out of the reach of children.
- Do not unscrew or dismantle the device under any circumstances.
- The device itself is splash-proof but its connectors are exposed. Avoid splashing water and keep the connector inputs dry at all times.
- Keep in a cool and dry place.

### Care and maintenance:

- Ensure you regularly clean the sensors and cables once a month to prevent any build up.
- Keep at a normal distance from your home network router or use the ethernet connection (5) to hardwire your device.
- Make sure to keep the lids of the connectors which are not in use closed at all times.

### FCC Warning

This device complies with part 15 of the FCC rules. Operation is subject to the following two conditions: (1) this device may not cause harmful interference, and (2) this device must accept any interference received, including interference that may cause undesired operation. Changes or modifications not expressly approved by the party responsible for compliance could void the user's authority to operate the equipment.

NOTE: This equipment has been tested and found to comply with the limits for a Class B digital device, pursuant to part 15 of the FCC Rules. These limits are designed to provide reasonable protection against harmful interference in a residential installation. This equipment generates uses and can radiate radio frequency energy and, if not installed and used in accordance with the instructions, may cause harmful interference to radio communications. However, there is no guarantee that interference will not occur in a particular installation. If this equipment does cause harmful interference to radio or television reception, which can be determined by turning the equipment off and on, the user is encouraged to try to correct the interference by one or more of the following measures:

- Reorient or relocate the receiving antenna.
- Increase the separation between the equipment and receiver.
- Connect the equipment into an outlet on a circuit different from that to which the receiver is connected.
- Consult the dealer or an experienced radio/TV technician for help.

### Radiation Exposure Statement

This equipment complies with FCC radiation exposure limits set forth for an uncontrolled environment. This equipment should be installed and operated with minimum distance 20cm between the radiator and your body.