

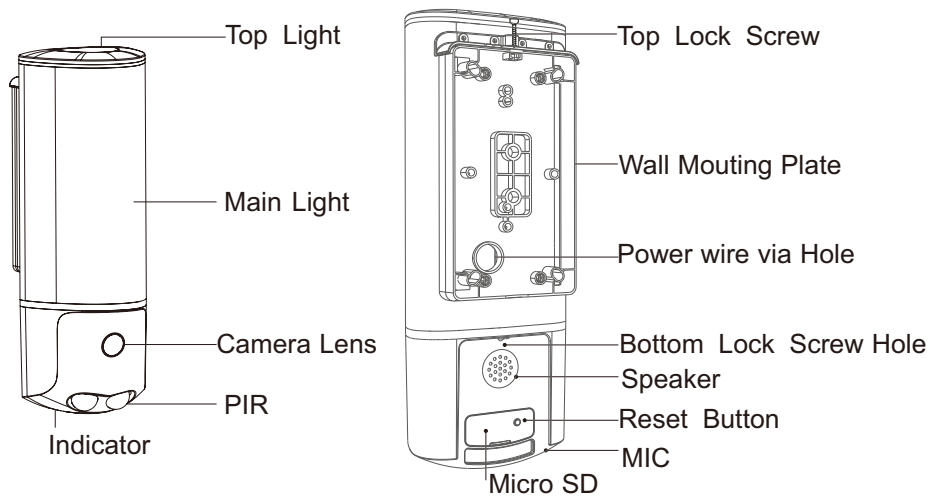
Smart Security Light Camera

Maimiao™ MX5

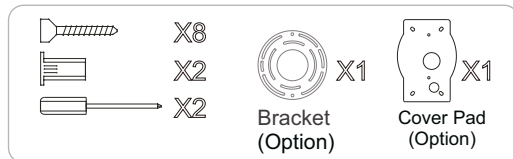
User Manual

Key Features

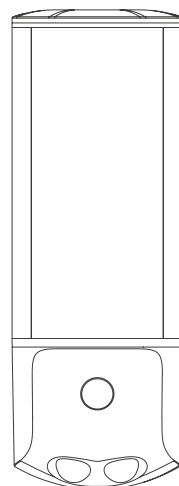
- 1080P Full HD Security Camera
- 1200 Lumen White LED Lamp
- APP View Live Video & Playback
- PIR & Sensor Dual Detection
- Two Way Audio
- APP Push Notifications
- APP Control Light & Adjust Brightness
- Waterproof



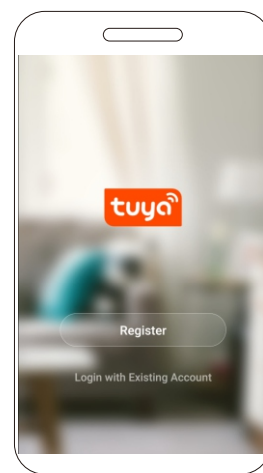
Spare Parts List



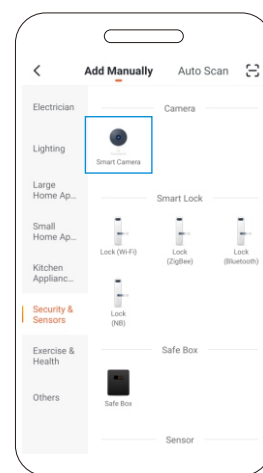
Installation Steps



1. Fix the Wall Mounting Plate
> Connect the power cable
> Mount the Camera housing
> Power it up



2. Download and install "TuYa Smart" app
> Open app
> Registered account



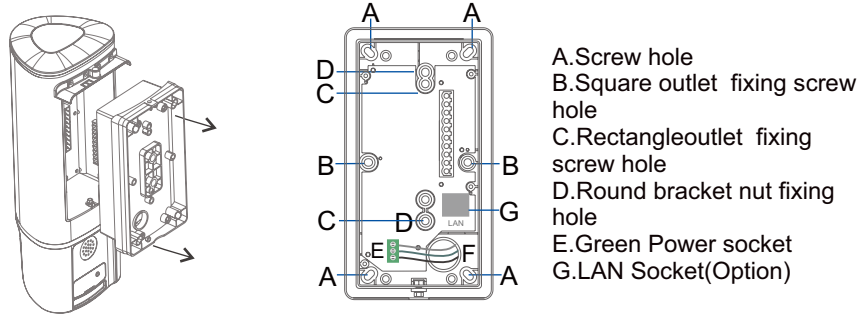
3. Click Add Device > select Security & Sensors > Smart Camera
> click Other Mode(upper right)
> select Mode
> click next step

★NOTE: This product only supports QR code & Smart Mode & Wired Network(Option, Only for Ethernet Version)

★ Product as AP mode are not supported; Please refer to the following APP Installation And Initial Configuration

Product Installation Instruction

1. Hold the side of Wall Mounting Plate by hand, slightly rock up and down, then pull out the Wall Mounting Plate



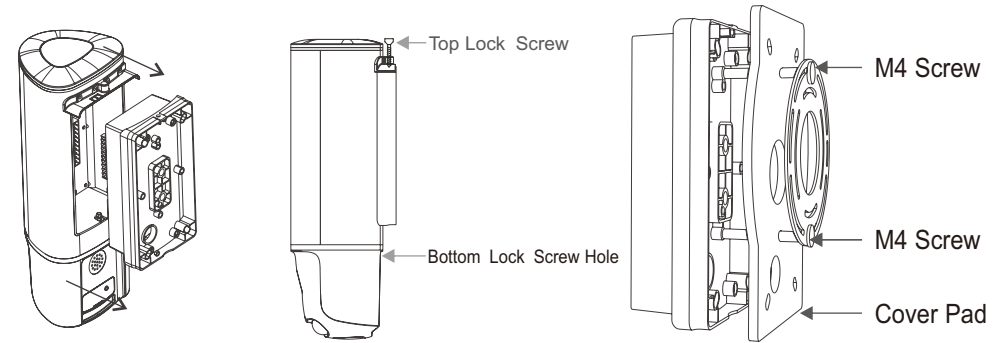
2. First make the power cable via to the F hole > connect the cable to green power socket (E position) > use screwdriver to fix the cable tight > according to the installation environment > select one installation mode (A to D) to fix the Wall Mounting Plate on the wall.

A. (For no Outlet): Mark 4 A position points with a pen > Drill holes above marked points > Tap in 4 plastic plugs > Lock 4 screws to fix the Wall Mounting Plate on the wall.

B. (For Square Outlet): Use 2 M4 screw to aim the outlet screw hole > lock the screw to fix the Wall Mounting Plate and square Outlet.

C. (For Rectangle Outlet): Use 2 M4 screw to aim then outlet screw hole > lock the screw to fix the Wall Mounting Plate and Rectangle Outlet.

D. (For Circular Outlet): First lock 2 long M4 screws on the circular bracket > use two short M4 screws fix the circular bracket to outlet > place the Cover Pad on the bracket > Insert 2 bracket screws after aligning the Plate holes > lock the nut to finish Wall Mounting Plate fixed to the circular bracket.



3. Align the Housing back Rectangle gap with the Wall Mounting Plate > press the Housing close to the Plate > lock the up & bottom lock screws to complete the installation.

Recommend installation height is 2.5M:
Distance from the ground to the bottom of the product.

For Circular Outlet (option): as shown in the figure above
first lock two long M4 screws on the circular bracket.
> use 2 short M4 screws to fix the bracket on the outlet.
> place Cover Pad between bracket and plate
> insert two screws into the screw holes of the plate.
> lock two spare nuts at D position to fix the plate & circular bracket.

APP Installation And Initial Configuration

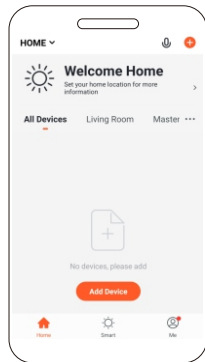
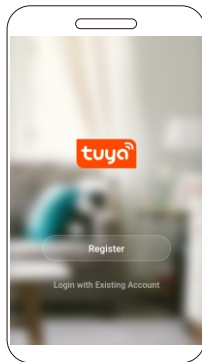
1.Preparation

- After power on 1 minute
- > check the device is waiting for installation (red Indicator light is flashing),if not please reset the device(Press and hold the reset button for 5 seconds then release)
- >Cell phone connected to the same WiFi router
- >Check the WiFi signal strength displayed by the cell phone at the place where the device is installed is no less than 2 bars.

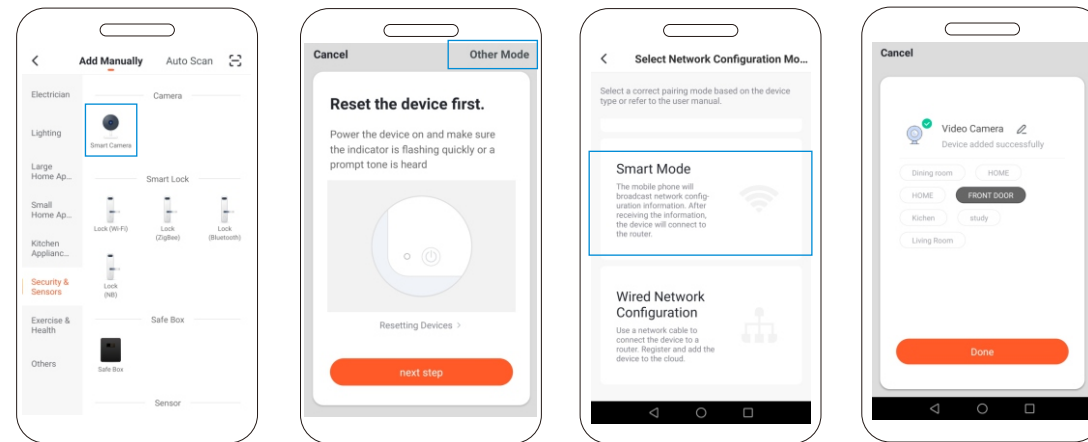


| | |
|----------|---|
| 3G/4G/5G | X |
| | X |
| | X |
| | ✓ |
| | ✓ |

2.Use APP store to search "Tuya Smart" >download and install>open Tuya Smart app>Registered Account



QR code Mode



3. Open APP main page > click Add device > Select Security & Sensors > Smart Camera > Other Mode (upper right) to select Mode

- QR code mode: Focus the Cell Phone Screen's QR code on the Lens(the distance is about 20 cm)>after the QR code is identified,the device will make beep sound>Click I Heard a Prompt>Waiting for Connecting device(about 1 minute)>click Done.
- Smart mode: Input WiFi password>next step>waiting for Connecting device(about 1 minute)>click Done.
- Wired Network(option): First insert network cable to the Lan Socket >observe that the green and yellow indicator lights are flashing>click next step>click found device>(about 1 minute)>click Done.(only for support ethernet device)
- AP Mode : (not supported)

❑ Operation Status Description

1.Red indicator : blinks means searching network.

Blue indicator: blinks means network connection is successful.

meanwhile searching the server. Always lights means device online.

Yellow indicator: blinks means Ethernet active.

Green indicator: blinks means Ethernet access successful.

2. Reset to factory setting: After powered on 1 minute , press and hold the reset button for more than 5 seconds then release, and hear the voice"reset complete" means reset to factory setting successful.

❑ Main Parameter

| | |
|-------------------------|-----------------------------|
| Product Name | Smart Security Light Camera |
| Model Number | MX5 |
| Camera Resolution | 1920*1800 (1080P) |
| Viewing angle | 110° |
| Operational Temperature | -20C° to +50 C° |
| WIFI | IEEE 802.11b/g/n |
| Power Supply | 100-240VAC ,50/60HZ,0.2A |
| Power | 25W(MAX) |
| Weight | 980g |
| Dimensions(H x W x D) | 300mmx111mmx112mm |

❑ Common Fault List

| Fault type | Indicator Status | Solution |
|--------------------------|------------------------------|---|
| No Power | Indicator off | Check the power connection status |
| Boot Failed | Red & Blue LED always lights | Power off 5 seconds, then power on again |
| Connect to WiFi Failed | Red LED always blinks | Check the WiFi signal strength near the installation of the device through the mobile phone (it needs to be greater than or equal to 2), check whether the WiFi password is correct, if the password is not correct, please click return, reenter password. |
| Connect to Server Failed | Blue LED always blinks | Check whether the network is connected to the Internet normally |

NOTE

This device complies with part 15 of the FCC Rules. Operation is subject to the condition that this device does not cause harmful interference

(1) this device may not cause harmful interference, and (2) this device must accept any interference received, including interference that may cause undesired operation. Changes or modifications not expressly approved by the party responsible for compliance could void the user's authority to operate the equipment. NOTE: This equipment has been tested and found to comply with the limits for a Class B digital device, pursuant to Part 15 of the FCC Rules.

These limits are designed to provide reasonable protection against harmful interference in a residential installation. This equipment generates, uses and can radiate radio frequency energy and, if not installed and used in accordance with the instructions, may cause harmful interference to radio communications. However, there is no guarantee that interference will not occur in a particular installation. If this equipment does cause harmful interference to radio or television reception, which can be determined by turning the equipment off and on, the user is encouraged to try to correct the interference by one or more of the following measures:-- Reorient or relocate the receiving antenna.

-- Increase the separation between the equipment and receiver.-- Connect the equipment into an outlet on a circuit different from that to which the receiver is connected.

-- Consult the dealer or an experienced radio/TV technician for help.

To maintain compliance with FCC's RF Exposure guidelines, This equipment should be installed and operated with minimum distance between 20cm the radiator your body: Use only the supplied antenna. Changes or modifications made to this equipment not expressly approved by manufacturer name) may void the FCC authorization to operate this equipment.

FCC ID:2AWK9-MX5

Contact us

Manufacturer:
Shenzhen Maimiao Innovation Technology Co., Ltd

Address:
1F No. 116, Long shi Road, Xin lian Community, Long gang District,
Shenzhen ,China

Tel:
+86075528998667

Email:
faq@syshare.com

CE FC RoHS