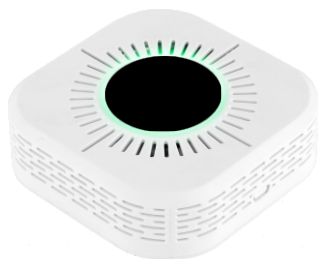


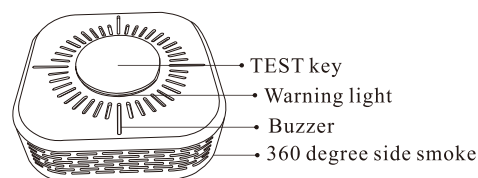
C200 Composite detection alarm CO / Smoke



I. Product Profile

The photoelectric composite detector is used for the detection of CO gas or smoke. In order to ensure the safety of home life, it is recommended to install composite alarm detectors in bedrooms, corridors, lofts, basements and other places. The product is powered by a DC 9V battery. When the detector gives an alarm, it will emit an alarm sound of $\geq 85\text{dB}$, and the alarm light will flash at the same time. The detector has a low-voltage alarm function and a button alarm mute or test function. The detector uses low-power technology, and the theoretical battery is replaced once a year.

II. Appearance introduction



III. Product characteristics

- Support three major alarms: smoke + CO + wireless transmission network alarm;
- Fully snap-in patented structure, simple installation, no need for debugging and wiring;
- 360 all-round detection of smoke alarm, no dead ends, reliable;
- Built-in high-sensitivity induction technology, reliable, safe;
- Built-in 85dB sound and light alarm, effective reminder evacuation site;
- Adopt ultra-low-power microprocessor + photoelectric principle technology, ultra-long standby life battery use for 3 years;
- Low battery alarm function, when the battery voltage lower than 6.8V, It will make warning tone out;
- The housing is designed to full rotary detachable buckle of easy maintenance

IV. Technology Parameter

Power voltage	DC9V(6F22 battery)
Gas detection	CO and Smoke

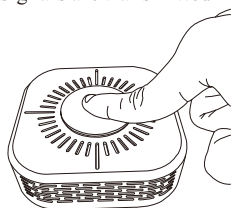
Green light flicker	Low pressure or smoke alarm
Blue light flashes	CO alarm
Static current	20uA
Alarm Current	30mA
Environment temperature	-10°C-+50°C
Sounder level	$\geq 85\text{dB}$
Battery Life	At least 1 year
Low voltage Alarm	6.8V
300PPM	alarms within 3 minutes
100PPM	alarms within 10~40 minutes
50PPM	alarms within 60~90 minutes
30PPM	alarms not activate within 120minutes

C200 and receiving alarm host pairing method:

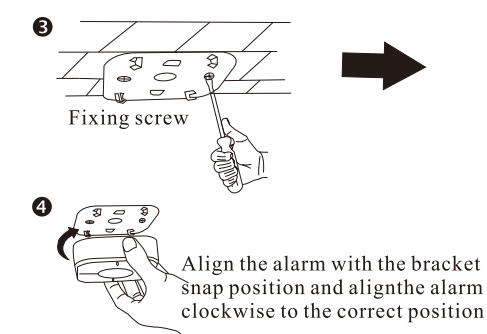
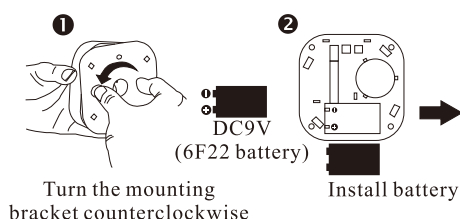
- ① Set the host in the “Align” mode;
- ② Press the C200 (TEST) key, the device beeps while transmitting wireless signals

[TEST] key two functions

- In the alarm state, press the [TEST] key, the product stops alarming
- In the non-alarm state, press the [TEST] key, the device alarm light blinks and sounds, and wireless signals are transmitted



V. Installation Guides



VI. Considerations for installation

- Do not install near doorways, windows, fans, etc., because this place generally has fast air circulation, which will affect the sensitivity of the alarm.
- Do not install in locations with high tide temperatures, such as bathrooms, top floors, or temperatures above 50 °C or down to minus 10 °C.
- Do not install in places with high temperature and high wind speed, otherwise it will affect the sensitivity.

- In order to keep the sensor working efficiently, the sensor needs to be cleaned every 6 months. Remove the battery first, then swipe the dust with a soft brush, and then put the battery back into the battery box.
- Abnormal temperature can also cause false alarms. Just let the air in the space circulate and the alarm sounds stopped. Dust will also reduce the sensitivity of the alarm. Please improve according to the cleaning method above.

VII. Daily problem handling

- ① Poor power supply: After installing the battery, the product does not respond.
Solution: Check whether the positive and negative poles of the battery are reversed (compared with the positive and negative poles on the case), whether the battery is sufficient, and whether the battery is in good contact with the shrapnel.
- ② Gas interference false alarm: product alarm when no gas leakage occurs
Solution: Check whether there are irritating items in the room, such as paints, pigments, alcohol, etc., or someone smokes an excessive amount of cigarettes; Can cause false positives)

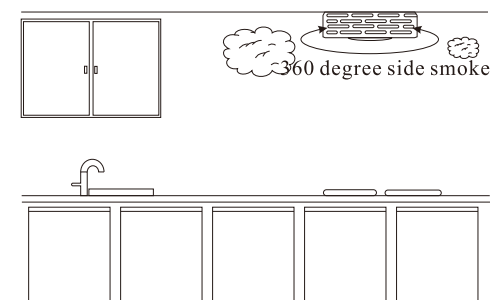
- ③ Poor self-test: Pressing the [TEST] key has no response during product use
Solution: If the battery power is poor, you need to check the power supply problem, if the power supply is normal, you need to return to the factory for repair

VIII. Test alarm

Two test alarm methods:

Method 1: Press the [TEST] key, the product alarm light flashes and sounds at the same time;

Method 2: Use CO gas or smoke to enter the smoke port from the side of the product, the alarm light will flash and sound at the same time. (As shown below)



FCC Caution:

This device complies with part 15 of the FCC Rules. Operation is subject to the following two conditions: (1) This device may not cause harmful interference, and (2) this device must accept any interference received, including interference that may cause undesired operation.

Any Changes or modifications not expressly approved by the party responsible for compliance could void the user's authority to operate the equipment.

Note: This equipment has been tested and found to comply with the limits for a Class B digital device, pursuant to part 15 of the FCC Rules. These limits are designed to provide reasonable protection against harmful interference in a residential installation. This equipment generates uses and can radiate radio frequency energy and, if not installed and used in accordance with the instructions, may cause harmful interference to radio communications. However, there is no guarantee that interference will not occur in a particular installation. If this equipment does cause harmful interference to radio or television reception, which can be determined by turning the equipment off and on, the user is encouraged to try to correct the interference by one or more of the following measures:

- Reorient or relocate the receiving antenna.
- Increase the separation between the equipment and receiver.
- Connect the equipment into an outlet on a circuit different from that to which the receiver is connected.
- Consult the dealer or an experienced radio/TV technician for help.