

VERSAJET[®] III Internal Pictures

Applicant Name: Smith & Nephew Medical Limited

Address: 101 Hessle Road, Hull HU3 2BN, United Kingdom.

Product Name: VERSAJET[®] III

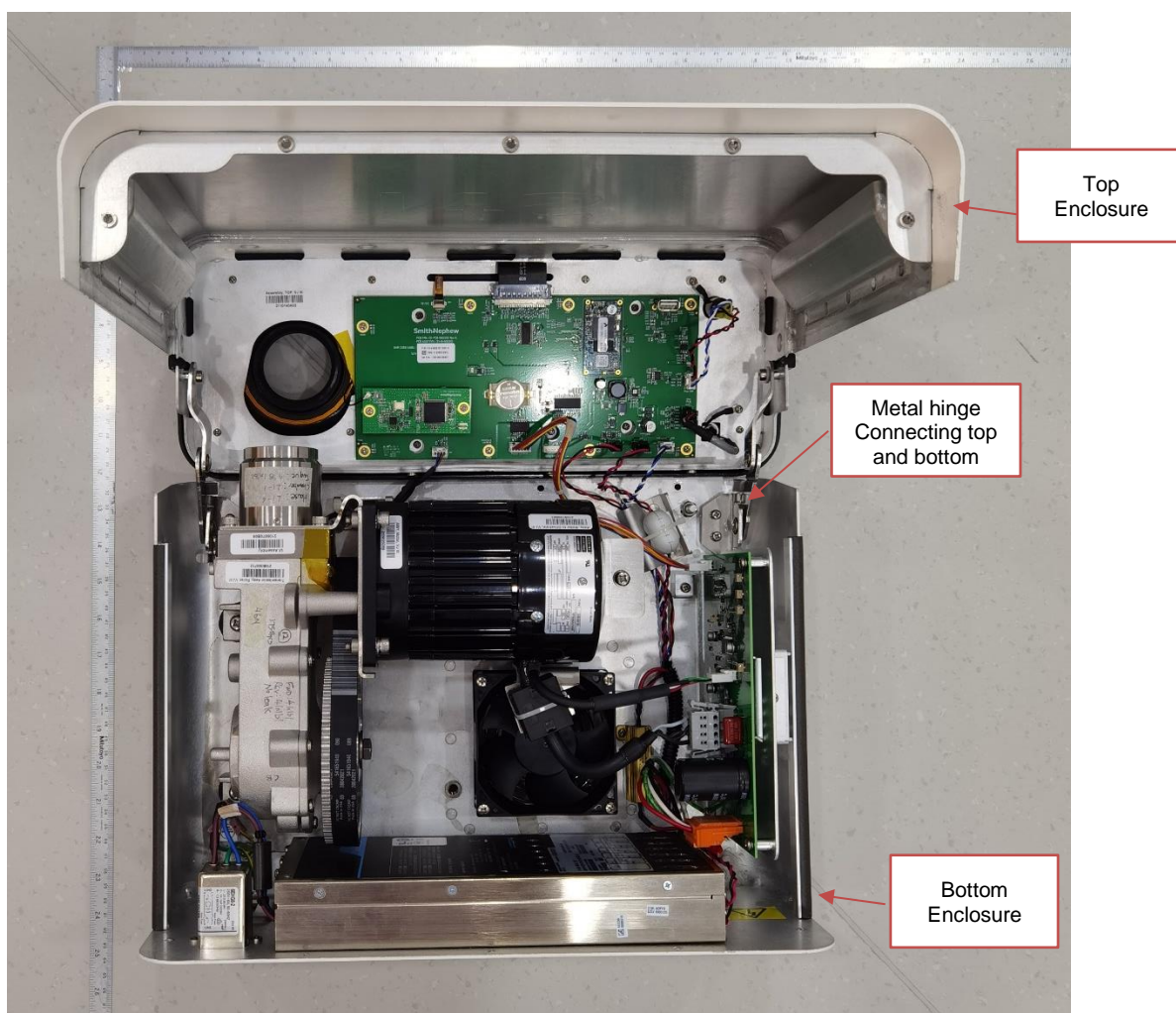
Model Number: 66802146

Console Part Number: 121-A2-000508

FCC ID: 2AWH9-VJIII

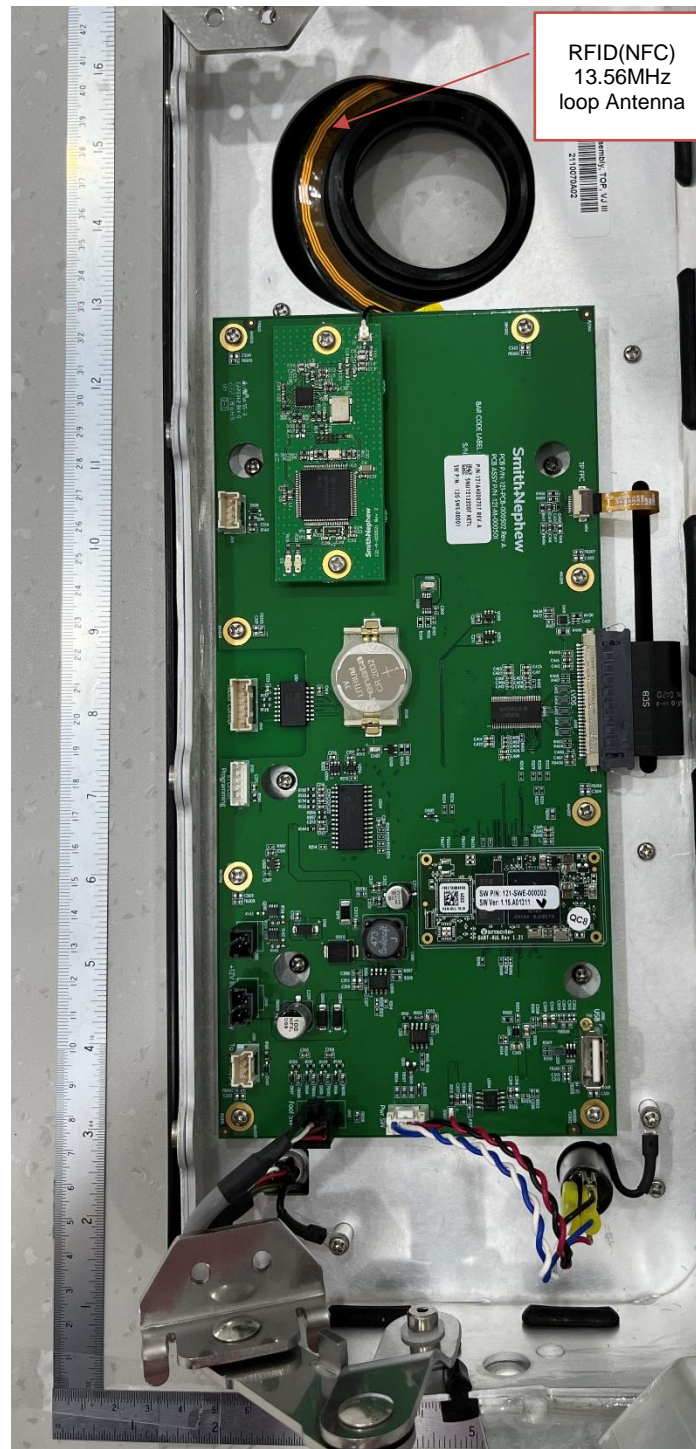
IC ID: 26135-VJIII

- 1- Top enclosure (Digital Control & UI board, RFID/NFC Antenna, LCD/Touch Module, Power Switch & Footswitch connector) and Bottom enclosure (Transmission Roller Assembly, Motor Assembly, PSU, Fan, AC inlet & Motor Control Board)

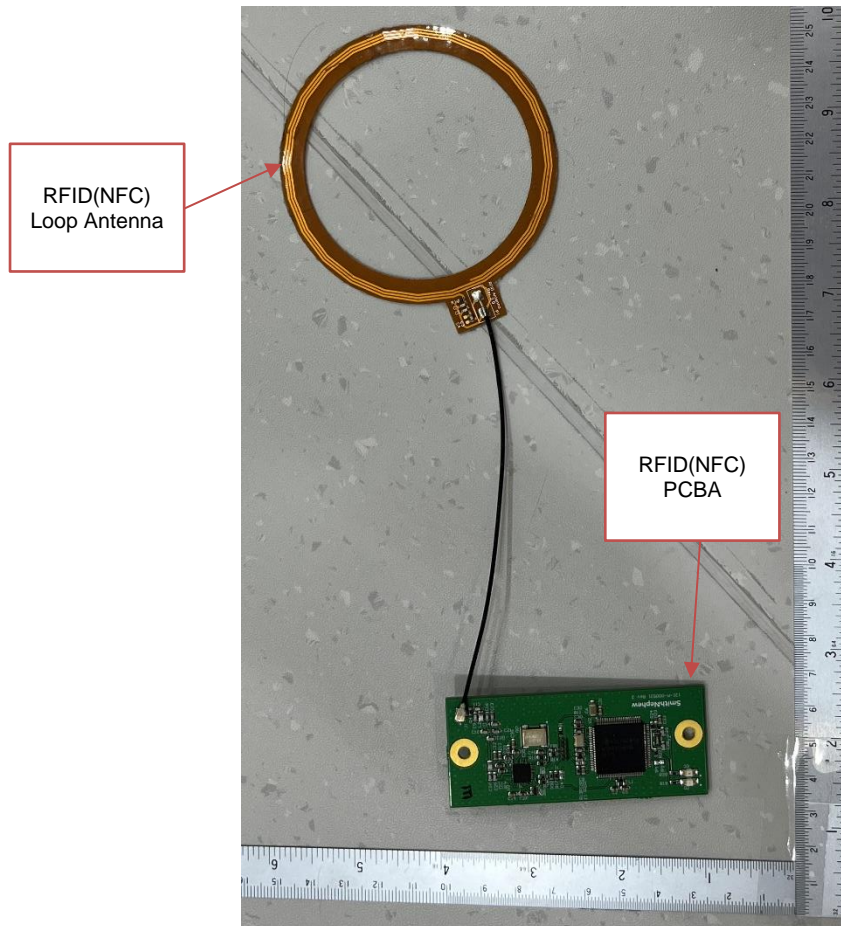




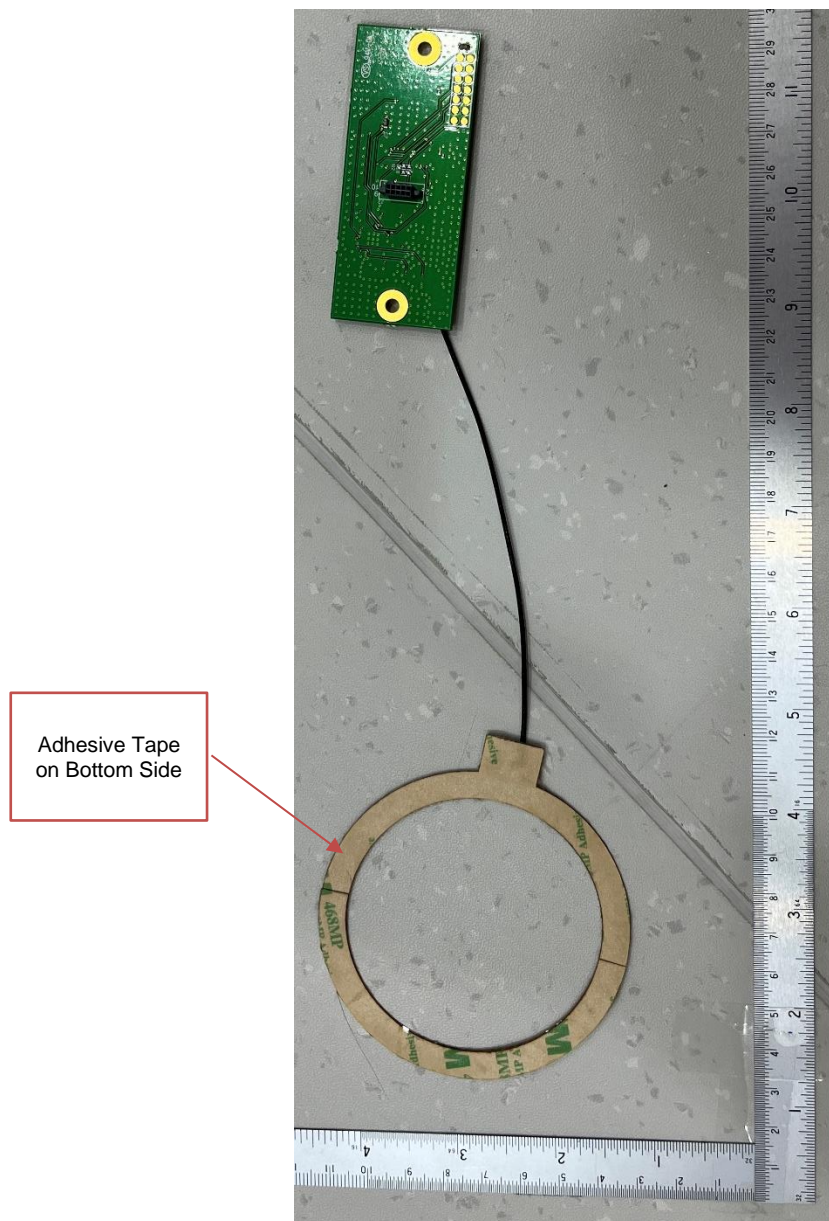
3- Top cover enclosure – Zoom in showing antenna position and co-axial connection to PCBA.



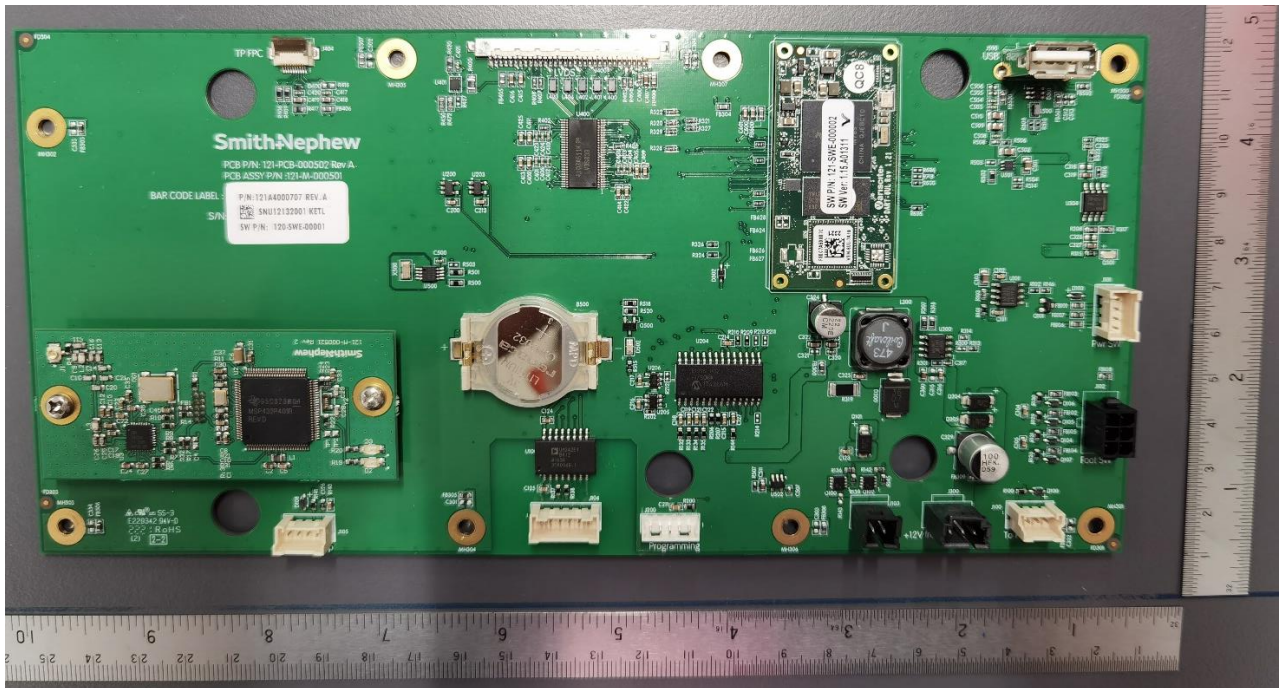
4- RFID(NFC) Loop Antenna with RFID(NFC) PCBA – Top View



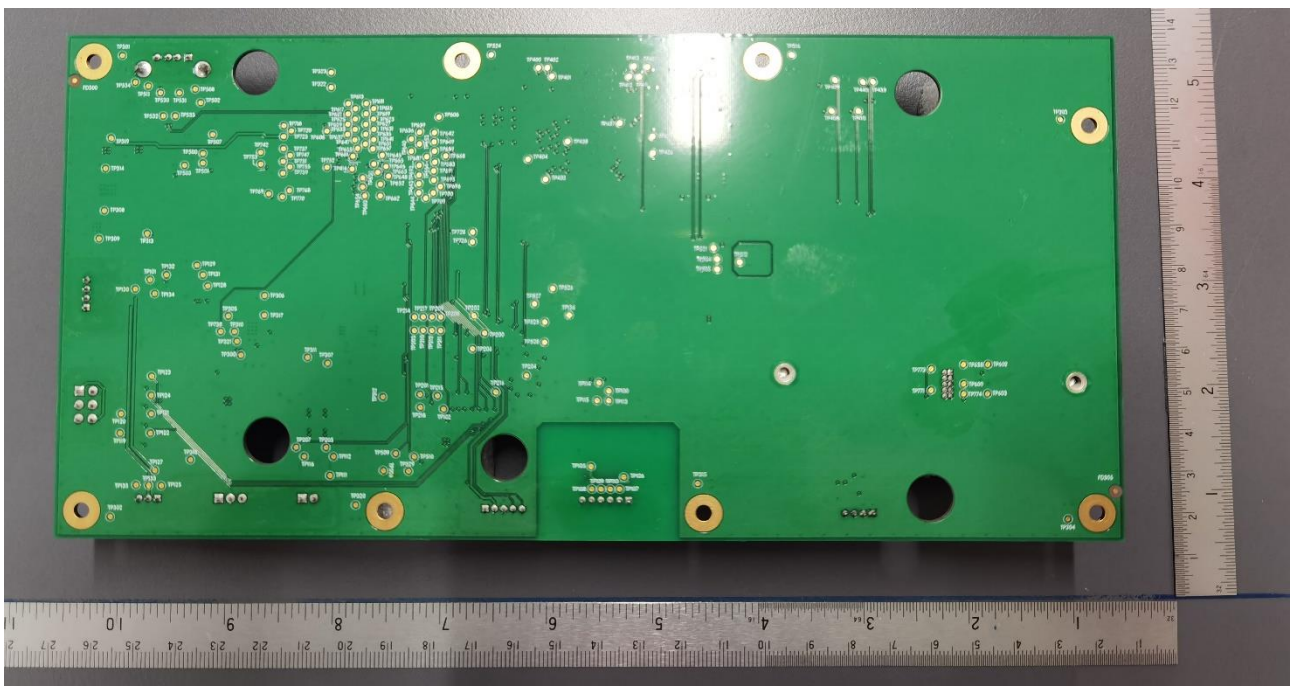
5- RFID(NFC) Loop Antenna with RFID(NFC) PCBA – Bottom View



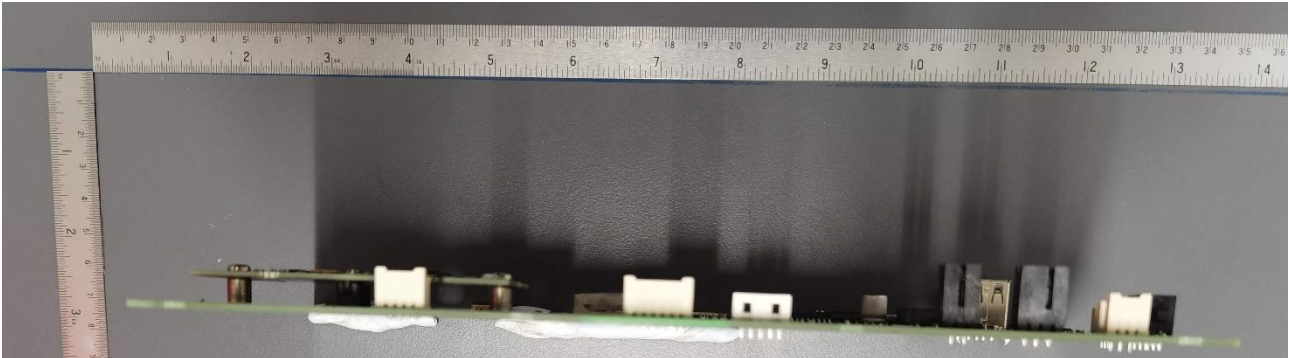
6- Digital Control & UI PCBA – Top View.



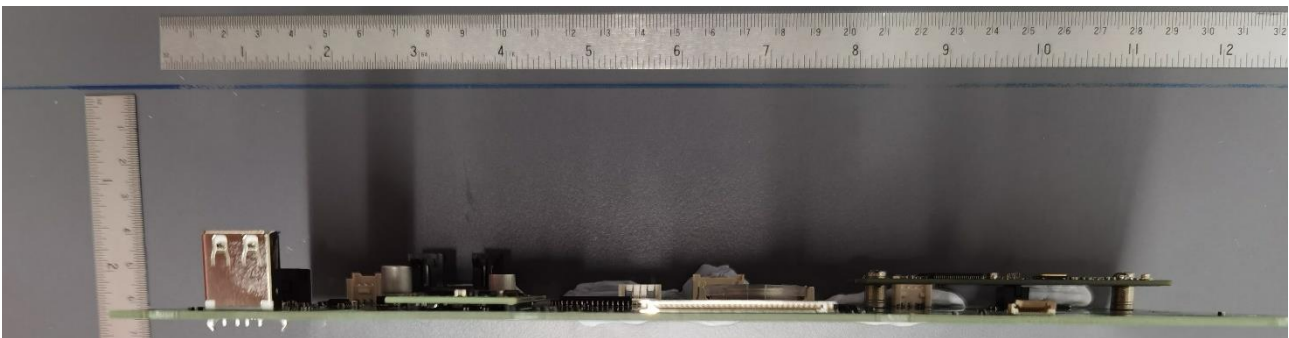
7- Digital Control & UI PCBA – Bottom View.



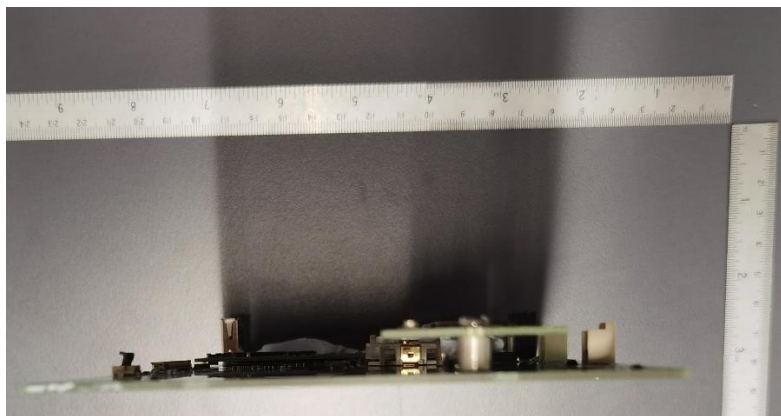
7- Digital Control & UI PCBA – Side View 1.



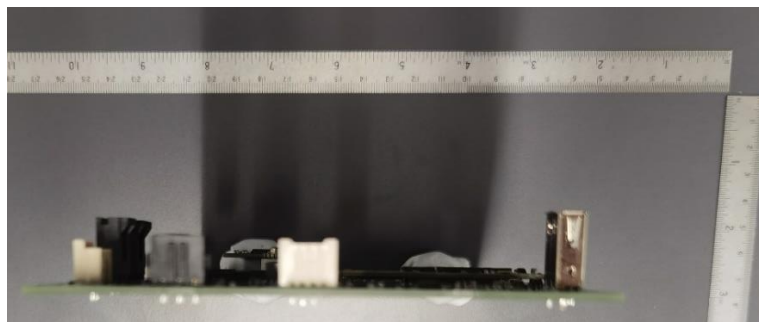
8- Digital Control & UI PCBA – Side View 2.



9- Digital Control & UI PCBA – Side View 3.



10- Digital Control & UI PCBA – Side View 4.

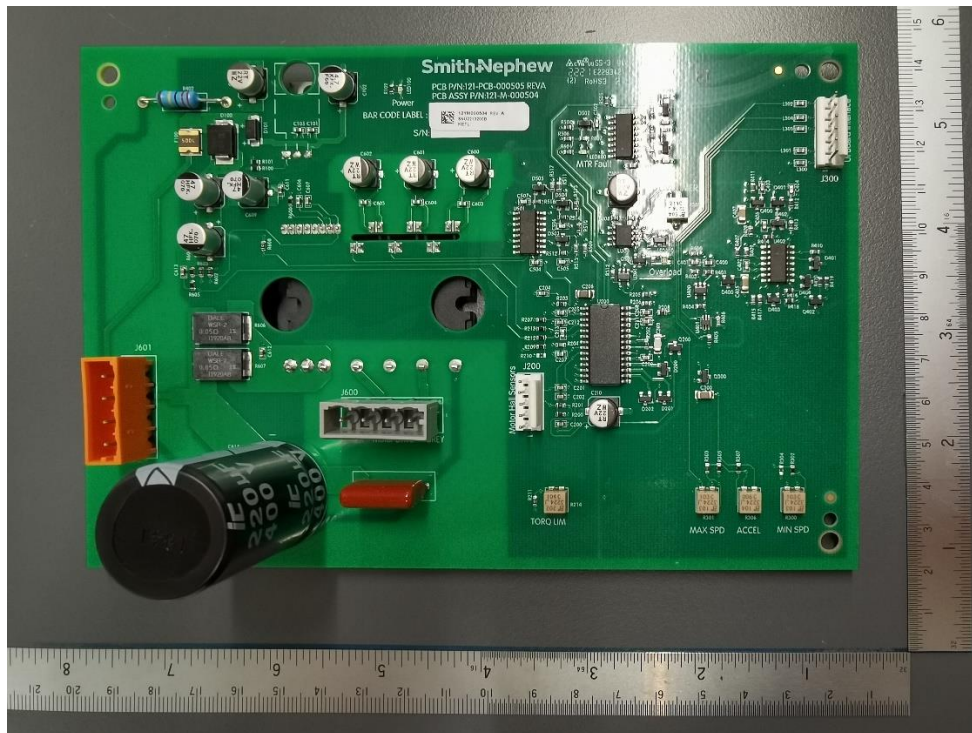


Smith & Nephew Medical Limited
101 Hessle Road
Hull
HU3 2BN
England

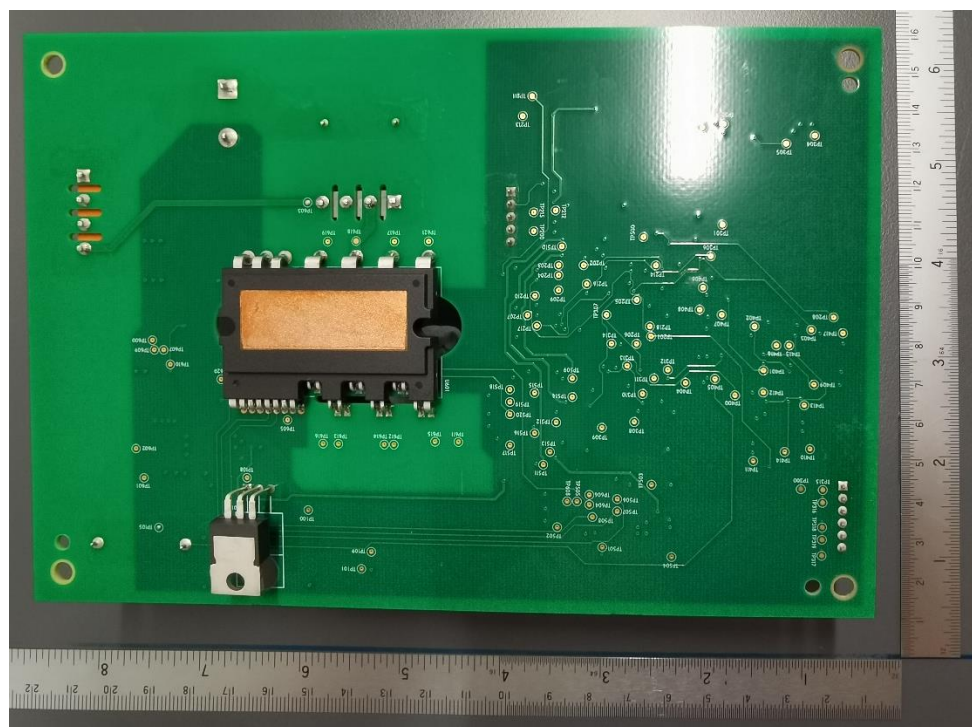
T: + 44 (0)1482 225181
F: + 44 (0)1482 328326
www.smith-nephew.com

Smith+Nephew

11- Motor Control PCBA – Top View.



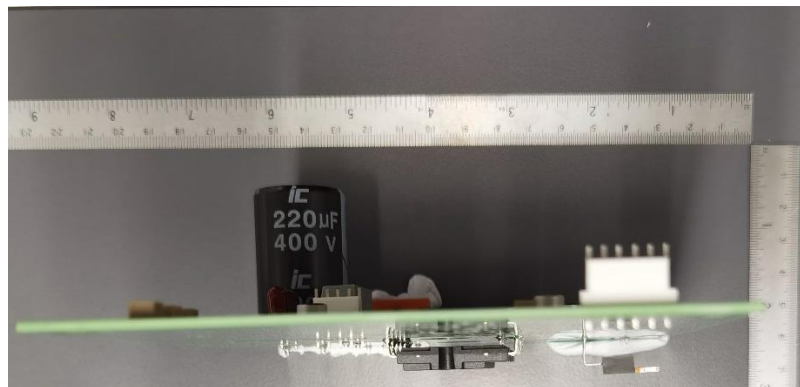
12- Motor Control PCBA – Bottom View.



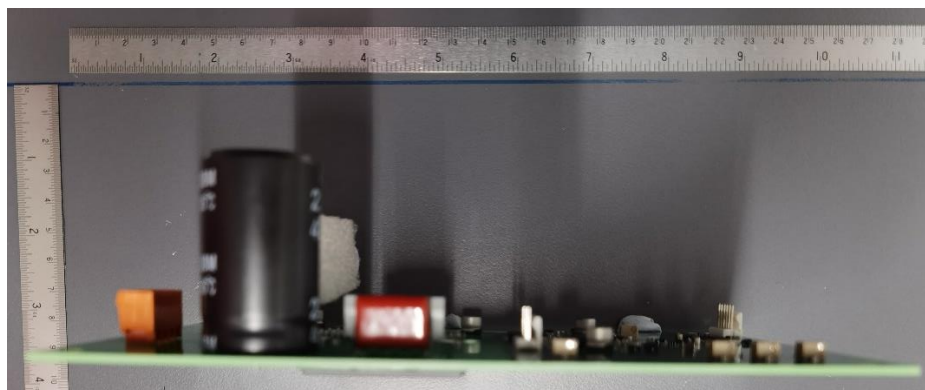
13- Motor Control PCBA – Side View 1.



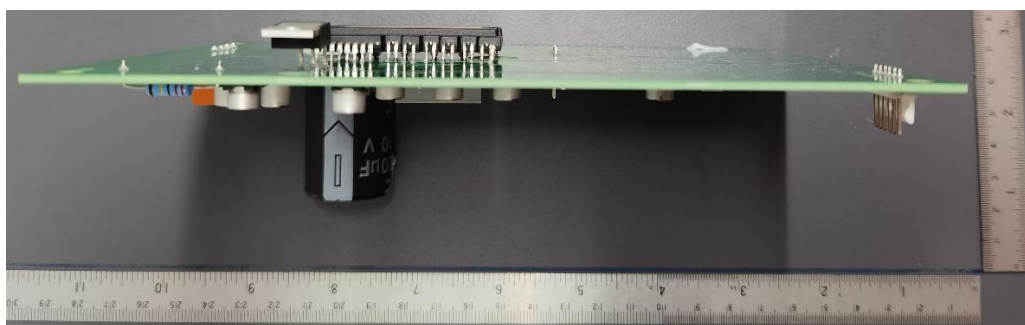
14- Motor Control PCBA – Side View 2.



15- Motor Control PCBA – Side View 3.



16- Motor Control PCBA – Side View 4.



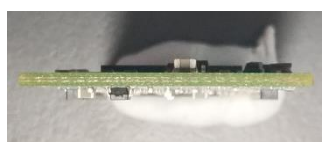
17- SOM - Top view.



18- SOM - Bottom view.



19- SOM - Side view 1.



20- SOM - Side view 2.



21- SOM - Side view 3.



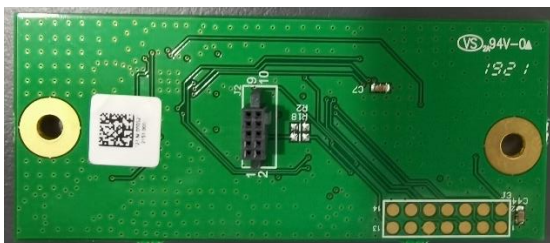
22- SOM - Side view 4.



23- RFID PCBA – Top View.



24- RFID PCBA – Bottom View.



25- RFID PCBA – Side View 1.



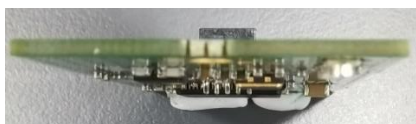
26- RFID PCBA – Side View 2.



27- RFID PCBA – Side View 3.



28- RFID PCBA – Side View 4.



29- Hand piece and separate RFID (NFC) TAG Cover



30- RFID (NFC) TAG on TAG Cover



31- RFID (NFC) TAG

