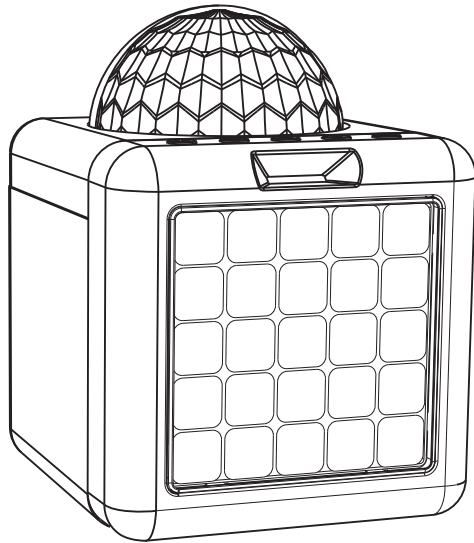


# USER MANUAL

## Karaoke Speaker Box



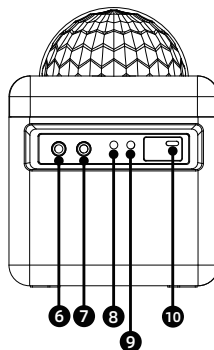
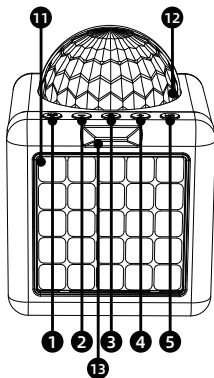
### 1 Technical Specifications

- Bluetooth version : 5.3
- Speaker power (RMS) : 10W
- Speaker peak power: 25W
- Speaker size : 77mm
- Party lights : Yes
- Nr. of LED : 25pcs
- Input voltage : 5VDC
- Input current : 1.0A
- Power socket : USB type-C
- Battery type : Built-in lithium-ion
- Battery capacity : 1200mAh
- Charging time : 3h
- Battery play time : 2-3h
- Bluetooth frequency range : 2402-2480MHz
- Power cable connection B : USB type-C
- USB charging cable & AUX cable length: 50cm, Mic cable length: 200cm
- Bluetooth signal range: 10m
- Speaker impedance :  $3\Omega$
- S/N Ratio: 80 dB
- Product dimensions: 170 x 180 x 225mm

## 2 Packaging Contents

- 1 x Karaoke Speaker Box
- 2 x Wired microphone
- 1 x Charging cable ( Type-C )
- 1 x AUX cable
- 1 x User manual

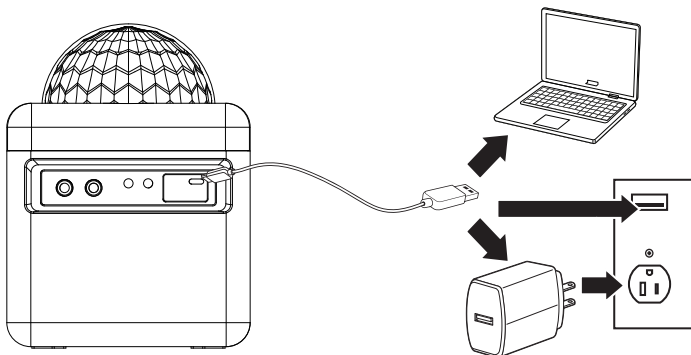
## 3 Overview & Controls



Keys	Panel Description
1	Press to change in cycle the different voice effects: Voice+Echo, Kid,Man,Woman Press and hold two seconds to switch between Bluetooth and Aux In mode
2	Press to switch to the previous track Press and hold to decrease the volume
3	Press to play or pause the music Press and hold three seconds to switch the power ON or OFF
4	Press to switch to the next track Press and hold to increase the volume
5	There are 2 modes for the 25 leds in the front panel: Sync (it will follow the music) and Auto ( it will play 9 differents lighting show program in loop) In Auto Mode, Press to change to the next light show program Double press to switch between AUTO and SYNC Press and hold three seconds to switch the LED ON or OFF
6	Mic input 1
7	Mic input 2
8	Aux input 1
9	Aux input 2
10	USB charging port
11	Front panel with 25 RGB leds
12	Disco Ball projects patterns on walls and ceiling
13	LED indicator

### 4 Battery Power

- Charge fully before use. The charge time is approximately 3 hours.
- When the unit is charging, the LED indicator will display a solid red light.  
When charging is complete, the indicator will turn off.
- Using a Type-C to USB cable (included), connect the DC power input on the speaker to the USB port of a powered on computer or USB power adaptor (not included) to charge the speaker.



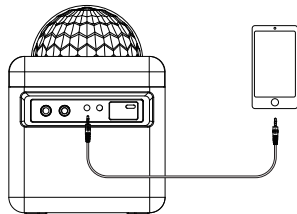
**Note:** The sound may become distorted when the battery is low. Please charge the unit.

### 5 Pairing Bluetooth & Playing Audio

1. Power on the speaker, a voice will announce “Pairing” and the LED indicator will display blue quick flash, when the unit is ready to pair. When pairing, remain within 3 feet of the unit.
2. Using the controls on your Bluetooth device, select Karaoke Speaker Box in the Bluetooth Setting to pair. A voice will announce “Connected” and the LED indicator will display a solid blue light, when the speaker is successfully paired to your device.
3. Use the controls on the connected Bluetooth device to select and begin playing audio. Use the controls on the device or the speaker to play, pause, skip tracks or adjust volume.

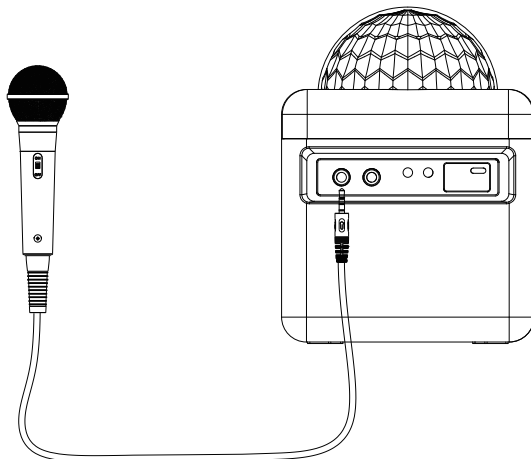
### 6 Aux In

1. Connect a 3.5mm audio cable to the Aux input 1 or Aux input 2 on the unit and the audio output/headphone jack on an audio device.
2. The speaker will automatically switch to Aux Mode.
3. Use the controls on the connected device to select and play audio. Be sure the volume on your connected device is audible when you begin playing.



### 7 Microphones Conected


Connect your wired microphone (included) to the Mic input 1 or Mic input 2 of the unit, and then you are ready to sing along with your bluetooth smart device. The audio mixer built-in the Karaoke Speaker Box will let you have fun, using youtube, spotify or any audio app on ios or android.



wireless specification:			
Type	frequency	Descriptions	Output Power Value
BT(BR+EDR)	2402MHz-2480MHz	Bluetooth v5.3	-0.34dBm

The host manufacturer has the responsibility that the host device should be compliance with all essential requirement of RED. This restriction will be applied in all member states.

The simplified EU declaration of conformity referred to in Article 10(9) shall be provided as follows: Dongguan Moritake Industrial Co., Ltd declares that the radio equipment type Smart Watch is in compliance with Directive 2014/53/EU.

				
BE	BG	CZ	DK	DE
EE	IE	EL	ES	FR
HR	IT	CY	LV	LT
LU	HU	MT	NL	AT
PL	PT	RO	SI	SK
FI	SE			



#### FCC Caution:

This device complies with part 15 of the FCC Rules. Operation is subject to the following two conditions: (1) this device may not cause harmful interference, and (2) this device must accept any interference received, including interference that may cause undesired operation.

Any changes or modifications not expressly approved by the party responsible for compliance could void the user's authority to operate the equipment.

NOTE: This equipment has been tested and found to comply with the limits for a Class B digital device, pursuant to Part 15 of the FCC Rules. These limits are designed to provide reasonable protection against harmful interference in a residential installation. This equipment generates, uses and can radiate radio frequency energy and, if not installed and used in accordance with the instructions, may cause harmful interference to radio communications. However, there is no guarantee that interference will not occur in a particular installation.

If this equipment does cause harmful interference to radio or television reception, which can be determined by turning the equipment off and on, the user is encouraged to try to correct the interference by one or more of the following measures:

- Reorient or relocate the receiving antenna.
- Increase the separation between the equipment and receiver.
- Connect the equipment into an outlet on a circuit different from that to which the receiver is connected.
- Consult the dealer or an experienced radio/TV technician for help.

To maintain compliance with FCC's RF Exposure guidelines, This equipment should be installed and operated with minimum distance between 20cm the radiator your body: Use only the supplied antenna.