

# Mobvoi Earbuds Gesture

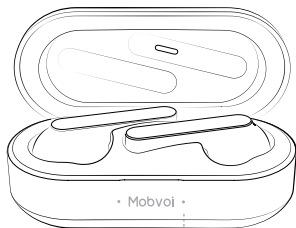
## User Manual of True Wireless Earphones

Each earphone can be used individually

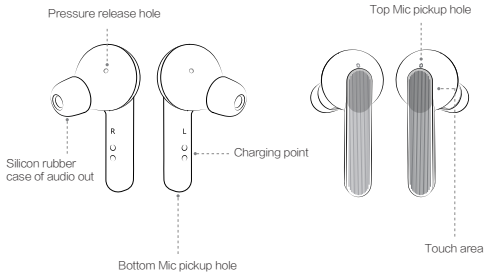
CXH-O



# Appearance



LED indicator on charging box

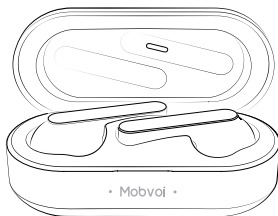


# Pairing and connection

## 1. Correct pairing

First pairing: Enable Bluetooth on the phone settings, open the charging box synchronously, and search for and click Mobvoi Earbuds Gesture xxx on the mobile phone click to connect. Earphone can be used when the connection is successful.

Second-time pairing: For the second-time pairing on the same mobile phone, directly enable Bluetooth on the mobile phone, and open the charging box for automatic connection.



\*The user manual's illustrations of products, accessories, user interface, etc. are schematic diagrams for reference only. Due to product updates, the real product may differ slightly from the schematic diagrams. Image shown above is indicative only.

## 2. Can be used with Mobvoi APP

A: APP can display earphone battery and Bluetooth name;

B: APP settings: On and off function for nodding to answer the phone and shaking the head to hang up the phone;

C: Install APP: search and download Mobvoi APP at app stores, and follow the tips to register and log in; you can also scan the QR code at the bottom of the charging box to download and install the app;

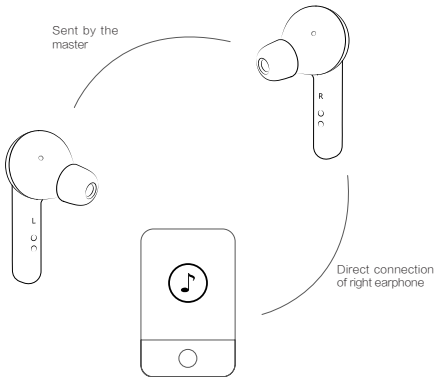
In addition, you can purchase your favorite products on TicStore on the app;

Scan QR code  
at the bottom to  
install Mobvoi



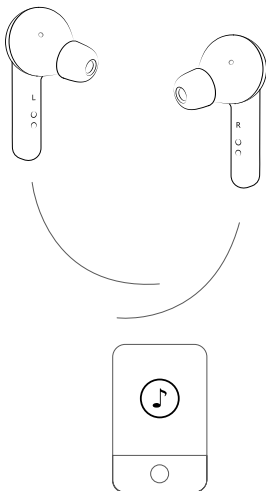
# Dual host transmission

1. Left and right earphones can be used independently thanks to dual host transmission



Traditional TWS earphones have a master-slave switch. The “master” is connected to the mobile phone first, and then transmits the audio received to the “slave” .

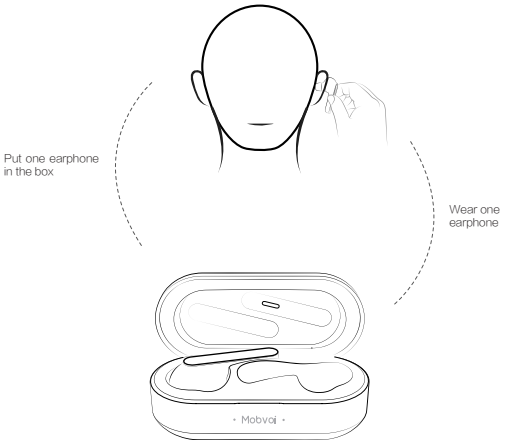
Therefore, it often causes Bluetooth disruption.



**Binaural direct connection:** Improvements have been made to TWS earphones. Assuming that the right earphone is the master, audio is transited to the left earphone not through the right earphone. Instead, the users feel that the left earphone is also connected to the master through air packet capture (as shown above). In this way, earphones have stable Bluetooth connection.

## 2. Seamless switching between left and right earphones

Seamless switching: Some TWS earphones can be used in one ear. However, when you only take the left earphone, put it back, and only take the right earphone, the master changes from the left earphone to the right earphone, and it needs to be re-started again at a slow speed. Seamless switching means that the master changes from the left earphone to the right earphone in basically 100ms.

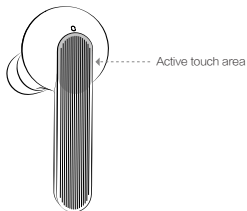


When during a phone call, the call continues if one of the dual earphones is put in the box;

The call is not interrupted when the right earphone is put in the box, and the left earphone is removed from the box;

# Definition of touch operation

Incoming call – call	Double click	Answer the call
	After answering the call, long press 2s	Hang up
	Long press 2s	Reject the call
Music-Play	Double click	Play/Pause
	Triple-click left earphone	Previous
	Triple-click right earphone	Next
Voice assistant	Long press 2s	Wake the phone' s default voice assistant

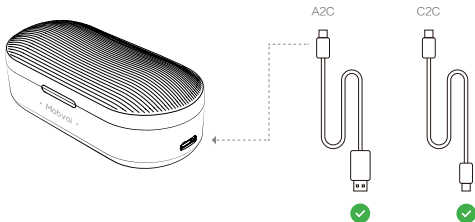




# Battery reminder

When the earphone battery is low	Earphone gives a sound
Earphone battery is less than 10%	The red light is on when the charging box is opened
The charging box has sufficient battery	The green light is on when the charging box is opened
The charging box is being charged	The green light on the charging box flashes
The charging box is fully charged	The green light on the charging box is always on

- \* 1. Please use the original USB-C cable to charge the earphones;
2. Support high-power charging plug. When the charging box light is not flashing, check whether USB charging cable used is suitable.



# Reset

1. Put both earphones in the box and close the cover, then take any earphone and long-press the touch area for 10s. When you hear the power-off tone, put it back in the box.
2. Repeat the above steps. Take out another earphone, long-press it for 10s and close the cover.
3. Finally, take out two headphones from the box. The two headphones have been paired again.

# Technical specifications

Model: CXH-O

Weight: earphone 60g

Speaker impedance: 16  $\Omega$

Working distance: 10m

Single endurance: 12H

Overall endurance (with charging box): 50H

Waterproof rating: IPX5

Bluetooth: BT5.0

Bluetooth name: Mobvoi Earbuds Gesture + last 4 digits of mac address

Charging time: earphone 1.5H

Interface type: type-C

Decoding format: SBC AAC

Speaker dimensions:  $\Phi 6.0 \times 3.9$ H

Earphone battery specifications: 90mA

Charging box battery specifications: 600mA

Bluetooth protocol: HFP, HSP, AVRCP, A2DP

Input parameters: Charging base's current 500mA, charging voltage 5V.

# Warranty and Service

Please read the MOBVOI LIMITED WARRANTY carefully before using the product at **[www.mobvoi.com/pages/limited-warranty](http://www.mobvoi.com/pages/limited-warranty)**

More information and services importer: Mobvoi Inc. Please check out our official website to learn more.

**[www.mobvoi.com](http://www.mobvoi.com)**

Please contact us if you experience any problems.

Customer service

**[support@mobvoi.com](mailto:support@mobvoi.com)**

## Manufacturer

Shenzhen Angsi Technology Co., Ltd

6/F, Block B, Dingxin Science Park, Hong Lang North No.2 Road , Bao 'an District, Shenzhen PRC

We provide a statutory warranty service in the country where you purchased the device from.

# Safety and Precaution

## Important safety information

Handle Mobvoi Earbuds Gesture and the charging case with care. They contain sensitive electronic components, including batteries. Do not drop, burn, puncture, crush, disassemble or expose the device to excessive heat or liquid, which may cause damage, battery leakage, overheating, and a possible risk of fire, explosion, or personal injury. Please do not use Mobvoi Earbuds Gesture and the case if they are damaged.

## Bluetooth®

The Bluetooth word mark and logos are registered trademarks owned by the Bluetooth SIG, Inc. and any use of such marks by Yangzhou Tenji technology co. LTD is under license. Other trademarks and trade names are those of their respective owners. To turn off Bluetooth on Mobvoi Earbuds Gesture, put them in the case and close the lid.

## Batteries

Earbuds contains:

Secondary (rechargeable) Li-ion Polymer

Normal Voltage 3.7V

90mAh 0.333 Wh

Model: LIR1454

Date of Manufacture: refer to sales label information

Do not attempt to replace Mobvoi Earbuds Gesture or the case' s batteries by yourself, as it may cause damage to the batteries, which could lead to overheating and/or personal injury. Any battery servicing should only be performed by the manufacturer or repair service centers authorized by the manufacturer.

## USB Cable and Charging Case

Avoid prolonged skin contact with the connector when the USB cable is plugged into a power source because it may cause discomfort or injury. For example, while the case is charging through the USB cable and the USB cable is plugged into a power source, don't sit or sleep on the USB connector or place it under a blanket, pillow or your body. Take special care if you have a physical condition that hinders your ability to detect heat.

Please only use the manufacture-recommended charging case and charging accessories for charging. Using incompatible accessories may lead to a risk of fire, explosion and/or burns. Please do not touch any exposed metallic areas on both charging case and USB cable when the device is plugged into a power source to avoid an electric shock. When charging, please ensure that the charging case, USB cable and earbuds are in a dry environment. Please avoid touching the charging case, USB cable and earbuds with wet hands and ensure that they have not been placed in water. A moist environment may cause electrocution or short circuit, which in turn carries a risk of fire, explosion and/or burns. In the event that the device overheats, please cease usage of the device immediately; If the device is currently charging, please unplug the USB charging cable from the case. Contact the manufacturer's after-sales support to receive assistance in order to prevent burns or possible battery explosion.

## Hearing loss

Listening to sound at high volumes may permanently damage your hearing. Background noise, as well as continued exposure to high volume levels, can make sounds seem lower than they actually are. Check the volume before inserting Mobvoi Earbuds Gesture in your ear.



### **WARNING**

To prevent possible hearing damage, do not listen at high-volume levels for long periods of time.

Driving hazard

Use of Mobvoi Earbuds Gesture while operating a vehicle is not recommended and may be illegal in some jurisdictions.

Check and obey the applicable laws and regulations in any specific jurisdiction on the use of earphones while operating a vehicle. Be careful and attentive while driving. Stop listening to your audio device if you find it's disruptive or distracting while operating any type of vehicle or performing any activity that requires your full attention.

## **Choking hazard**

Mobvoi Earbuds Gesture and the charging case may present a choking hazard or cause other injuries to small children. Please keep the device out of the reach of small children in order to prevent them from swallowing or biting the device.

## **Driving hazard**

If there are any special regulations in force in any area forbidding the usage of any electronic devices, please follow them as Mobvoi Earbuds Gesture may cause interference with other equipment which may increase the risk of accidents and danger.

Do not use your device in an aircraft, as it can interfere with the aircraft's electronic navigational instruments. Please comply with the airline's rules and regulations.

## **Medical device interference**

Mobvoi Earbuds Gesture and charging case contain components and radios that emit electromagnetic fields. They also contain magnets. Together, these electromagnetic fields and magnets may interfere with pacemakers, defibrillators, and other medical devices. Please abide by the rules and regulations in certain health care facilities which prohibit the usage of said devices. When in such places, either power off the device or maintain a safe distance of separation between Mobvoi Earbuds Gesture, the case and the specified medical device. Should the need arise to use Mobvoi Earbuds Gesture and the medical device simultaneously, please consult your healthcare provider and medical device manufacturer to obtain specific and relevant usage information of such medical device. Stop using Mobvoi Earbuds Gesture and the case if you suspect that they are interfering with your pacemaker, defibrillator, or any other medical device.

## **Skin irritation**

Earphones can lead to ear infections if not properly cleaned. Clean the Mobvoi Earbuds Gesture regularly with a soft lint-free cloth. Do not allow any moisture to seep in any openings, or use aerosol sprays, solvents, or abrasives as these may cause damage to the device. Please discontinue usage should a skin problem appear. If the problem persists, please visit your healthcare provider to seek professional medical advice.

## **Electrostatic shock**

When using Mobvoi Earbuds Gesture in an area where the air is very dry, it is easy to build up static electricity and possible for your ears to receive a small electrostatic discharge from Mobvoi Earbuds Gesture. To minimize the risk of electrostatic discharge, avoid using Mobvoi Earbuds Gesture in extremely dry environments, or touching a grounded and/or unpainted metal object before inserting Mobvoi Earbuds Gesture.



## Operating environment

It is recommended to use your device at temperatures from **[−5 °C – 40 °C]** and store it at temperatures from **[0 °C– 30 °C]** . Using or storing your device outside the specified temperature ranges may result in damage to the device. Please do not use your device outdoors during rain or thunderstorms in order to prevent electric shock or device malfunction. Please do not use your device in moist, rainy, dusty or oily environments in order to prevent an internal short-circuit. Please do not use or store your device at refueling points (gas stations) or in potentially explosive environments. Please avoid placing the device in liquids or exposed to a pressurized water stream, for instance during a shower. Please do not wear your device when showering or swimming. This may cause the device to malfunction. Sweat or liquids present on the charging terminals may cause the earbuds to decay. Please ensure that both the charging terminals and earbuds are cleaned before placing the earbuds back into the charging case. Please follow the instructions set forth in the "skin irritation" section in the user manual to clean the earbuds.

## CE Statements

Hereby, Yangzhou Tenji technology co. LTD declares that this [Mobvoi Earbuds Gesture, CXH-O] is in compliance with the essential requirements and other relevant provisions of Directive 2014/53/EU. The full text of the EU declaration of conformity is available at the following internet address:

<https://www.mobvoi.com/>

**EU Frequency:**2.4–2.4835GHz

**The maximum RF Power:**<100mW

## Manufacturer

Yangzhou Tenji technology co. LTD

Address: Tenji Ind.Ctr.,Xin Gang Road, Yanjiang Development Zone, Jiang Du, Jiang Su Province, China

## Importer



### RECYCLING

This product bears the selective sorting symbol for waste electrical and electronic equipment (WEEE). This means that this product must be handled pursuant to European Directive 2012/19/EU in order to be recycled or dismantled to minimize its impact on the environment.

## CAUTION

RISK OF EXPLOSION IF BATTERY IS REPLACED BY AN INCORRECT TYPE. DISPOSE OF USED BATTERIES ACCORDING TO THE INSTRUCTIONS.

## **FCC Compliance Statement**

This device complies with Part 15 of the FCC Rules. FCC ID Number is **2AWEG-CXHO**. Operation is subject to the following two conditions: this device may not cause harmful interference, and (2) this device must accept any interference received, including interference that may cause undesired operation.

NOTE: This equipment has been tested and found to comply with the limits for a Class B digital device, pursuant to part 15 of the FCC Rules. These limits are designed to provide reasonable protection against harmful interference in a residential installation. This equipment generates, uses and can radiate radio frequency energy and, if not installed and used in accordance with the instructions, may cause harmful interference to radio communications. However, there is no guarantee that interference will not occur in a particular installation. If this equipment does cause harmful interference to radio or television reception, which can be determined by turning the equipment off and on, the user is encouraged to try to correct the interference by one or more of the following measures:

- Re-orient or relocate the receiving antenna
- Increase the separation between the equipment and receiver
- Connect the equipment into an outlet on a circuit different from that to which the receiver is currently connected to
- Consult the dealer or an experienced radio/TV technician for help

Warning: Changes or modifications not expressly approved by the party responsible for compliance could void the user's authority to operate the equipment.

## IC Compliance Statement

This device contains licence-exempt transmitter(s)/receiver(s) that comply with Innovation, Science and Economic Development Canada's licence-exempt RSS(s). Operation is subject to the following two conditions:

- (1) This device may not cause interference; and
- (2) This device must accept any interference, including interference that may cause undesired operation of the device.

The term "IC: " before the certification/registration number only signifies that the Industry Canada technical specifications were met. This product meets the applicable Industry Canada technical specifications.

Cet appareil contient des émetteurs / récepteurs exemptés de licence conformes aux RSS (RSS) d'Innovation, Sciences et Développement économique Canada. L'exploitation est autorisée aux deux conditions suivantes : (1) l'appareil ne doit pas produire de brouillage, et (2) l'utilisateur de l'appareil doit accepter tout brouillage radioélectrique subi, même si le brouillage est susceptible d'en compromettre le fonctionnement.