



Make Life Easier

livingez.co



Smart Formula Pro

INSTRUCTION MANUAL

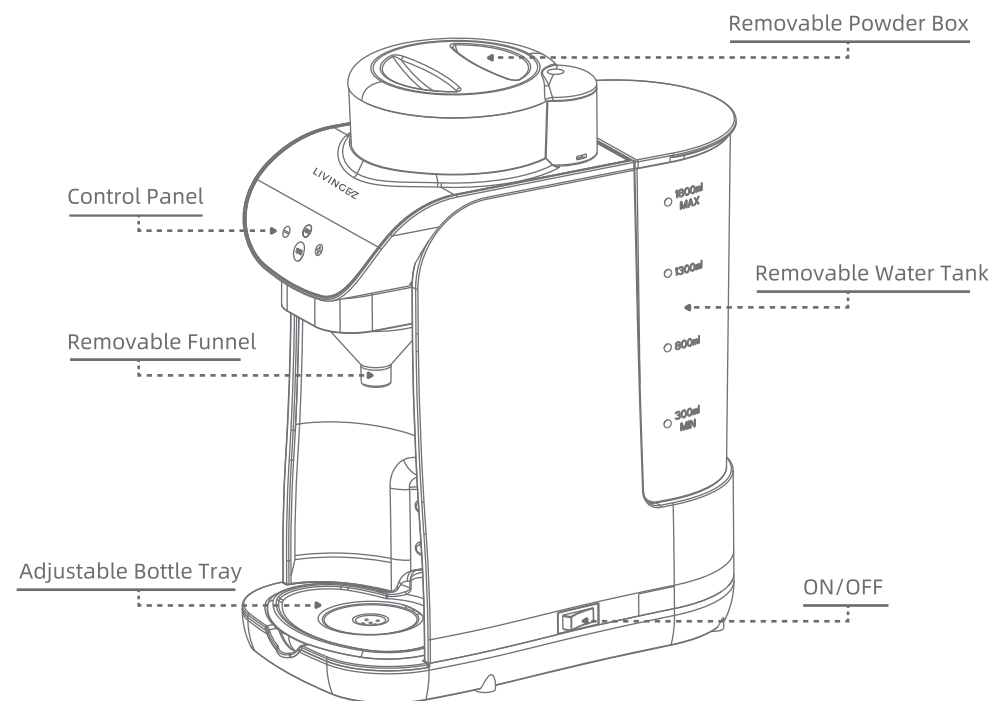
Please Read This Instruction Carefully To
Ensure Your Smart Formula Pro Works Perfectly



CATALOG

Product Indication	02
Product Structure	03
Installation Method	04
Install the formula powder box and three rotors	04
Install the powder box lid	04
Install the water tank	05
Install the funnel	06
Install the water tray and bottle tray	07
Completion	07
Operating Instructions	08
Prepare before dispensing formula	12
Cleaning and care	14
How to make the first bottle of your baby formula.....	15
Safe Operation Instruction	20
Attention	20
Warning	20
Storage, Transportation, and Operation Regulation.....	21
Q & A	22
Customer Support	23
Warranty Service	24

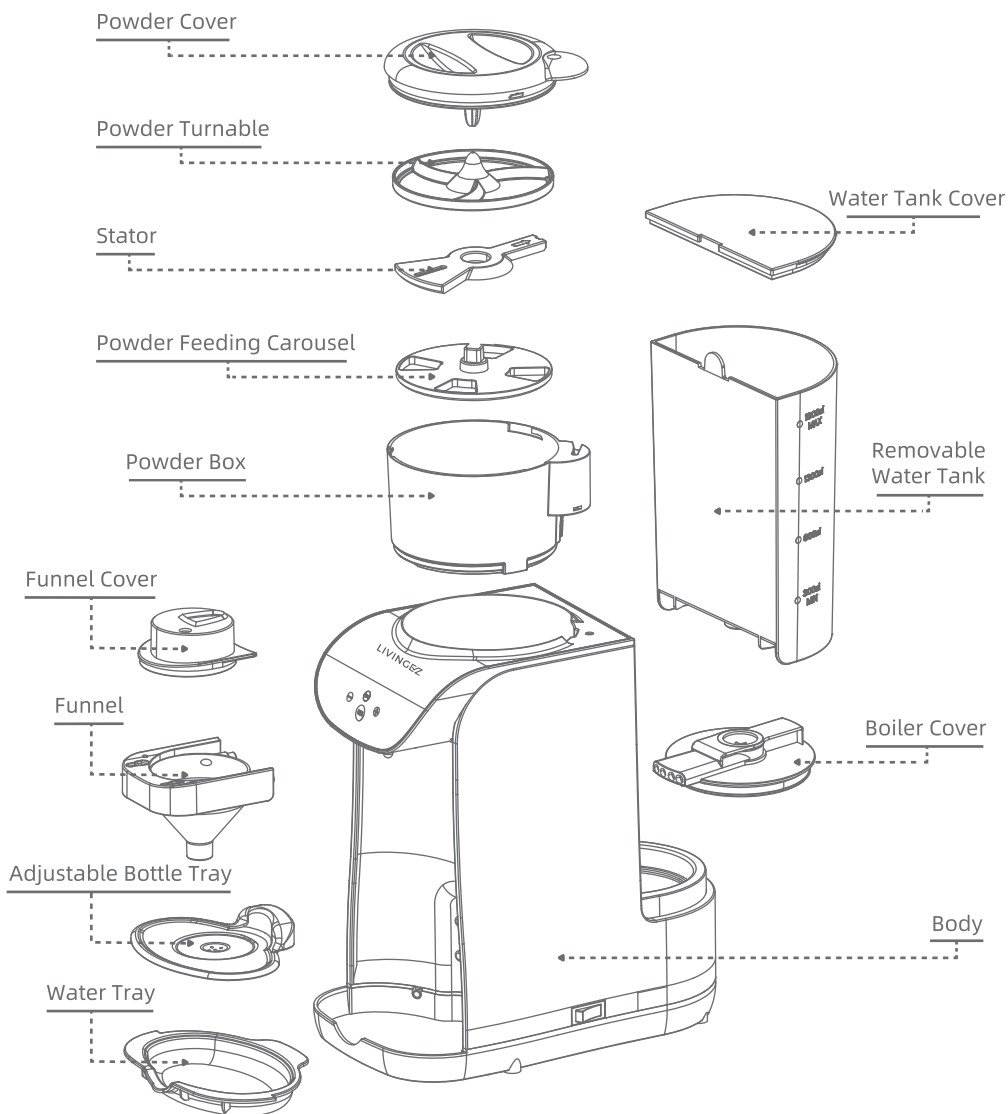
1 Product Indication



Specifications

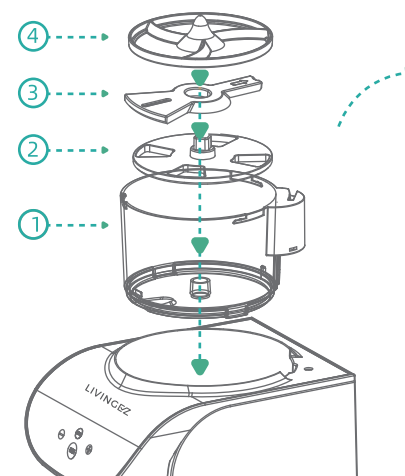
Product	Smart Formula Pro		
Powder capacity	300g	Voltage	110V
Water capacity	1800ml	Frequency	60Hz
Weight	2.75KG	Working power	550W
Dimension	180×300×370mm	Standby power	5W

2 Product Structure



3 Installation Method

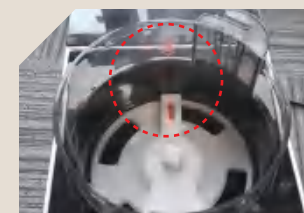
A. Install the formula powder box and three rotors.



① When installing the powder box, align it with the rail slot



② Install the powder feeding carousel



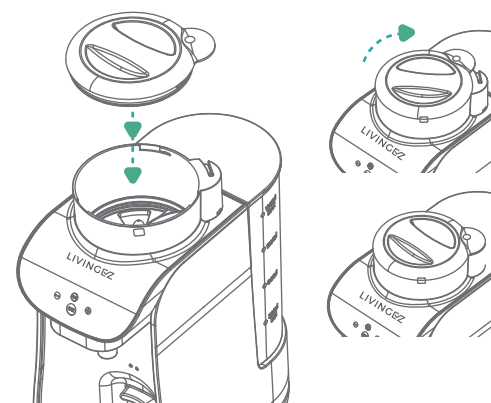
③ When installing the stator, align the red arrow of the stator with the red arrow in the box.



④ Install the powder mixing turnable

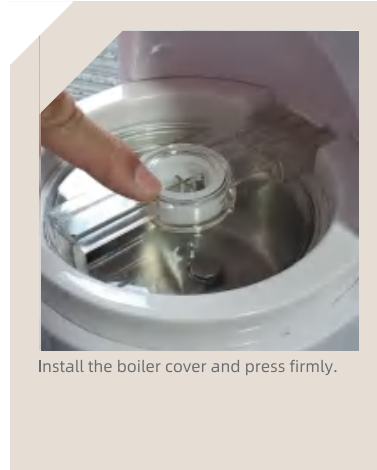
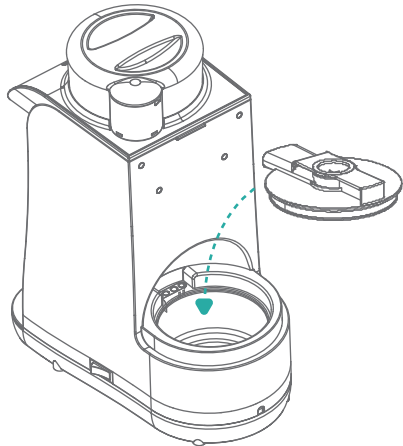
B. Install the powder box lid.

1. Align the locking points of the cover and powder box then rotate clockwise.

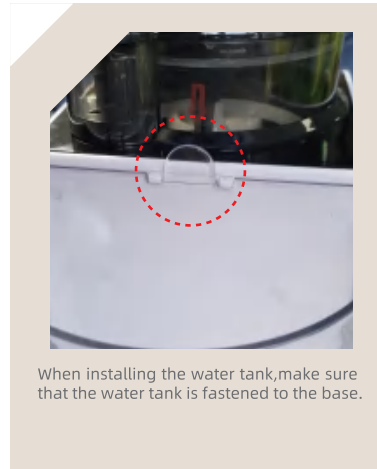
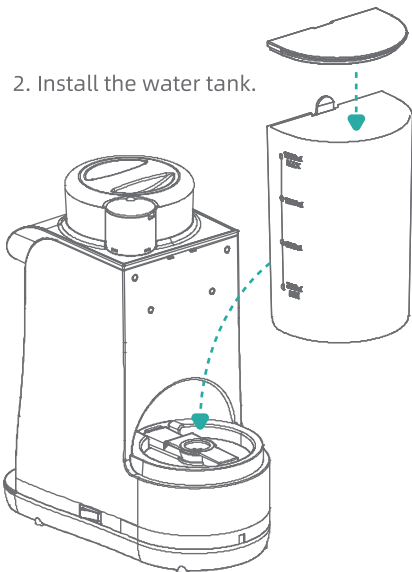


C. Install the water tank.

1. Install the boiler cover.



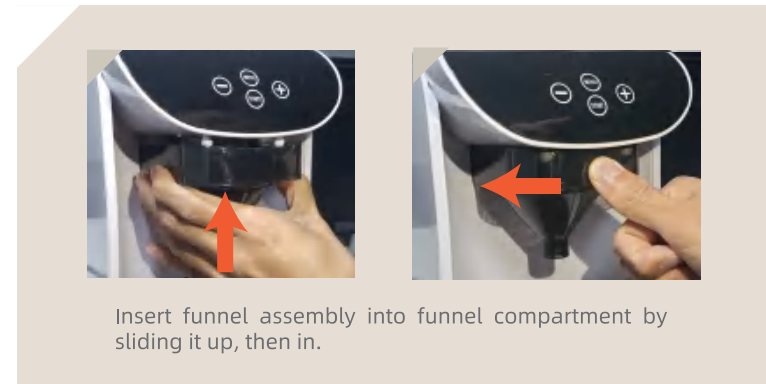
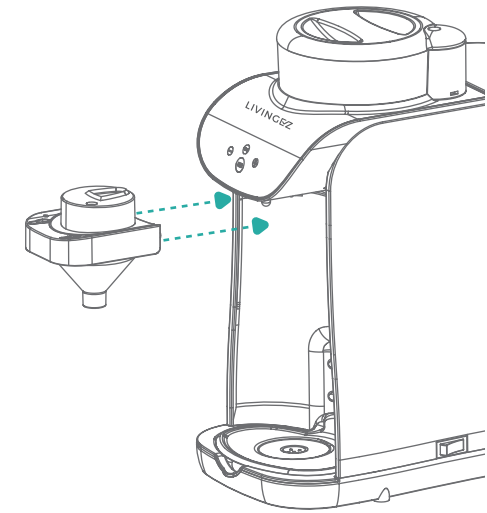
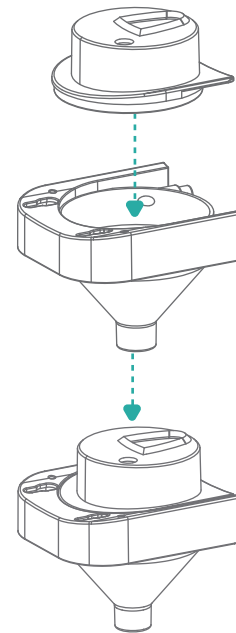
2. Install the water tank.



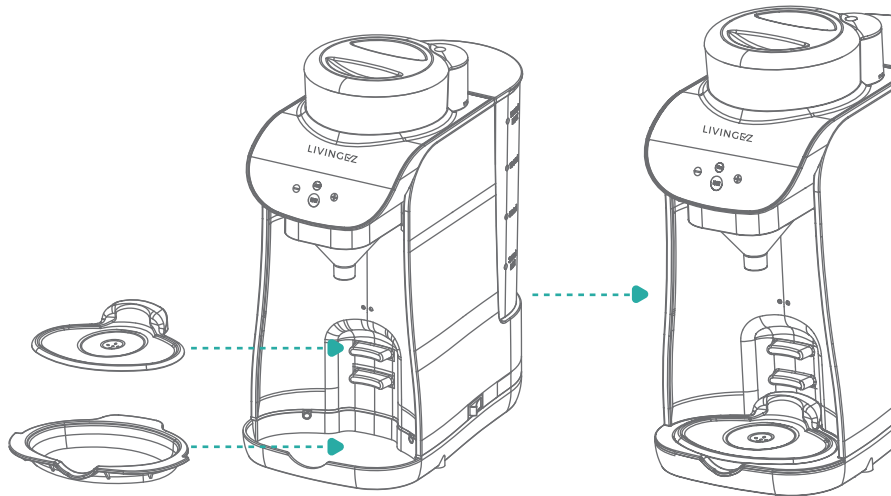
D. Install the funnel.

1. Assemble the funnel & funnel cover first.

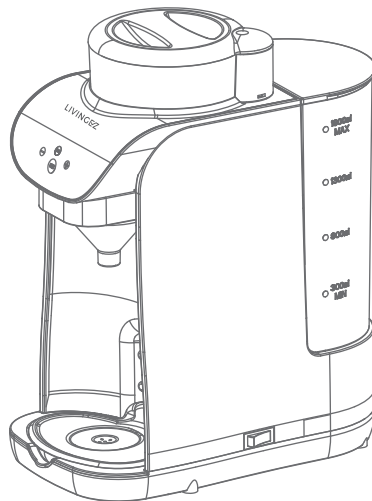
2. Lock the funnel into machine body



E. Install the water tray and bottle tray .

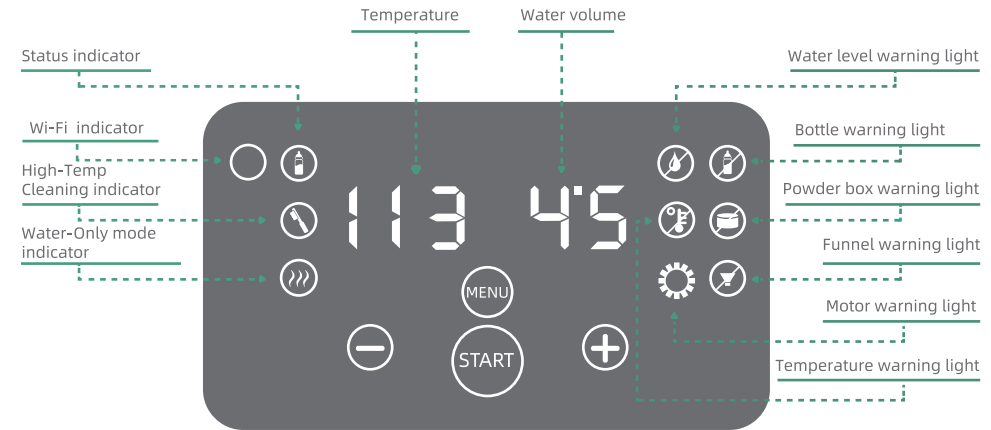


F. Completion.









4 Operating Instructions

Control Panel Description

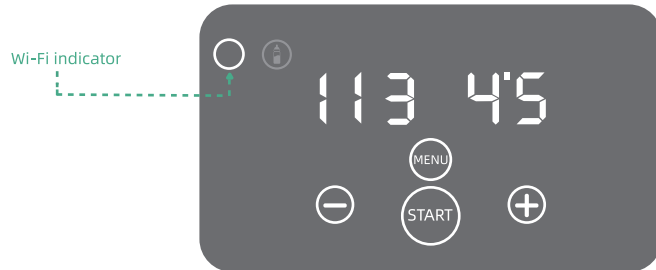


Warning Light Description

-  If the water level warning light turns on, it means that the water level in the boiler is low. Make sure there is enough water in the tank. Meanwhile, every time after formula dispense it will light up briefly.
-  If the bottle warning light turns on, it means that the bottle is not well placed. Make sure the bottle is placed correctly and the light is off.
-  If the powder box warning light turns on, it means that the powder box or the powder cover is not installed correctly. Please correct it and make sure the light is off.
-  If the funnel warning light turns on, it means that the funnel is not well placed. Please correct it and make sure the light is off.
-  If the temperature warning light turns on, it means that the water temperature in the boiler is too high. Please wait for the temperature to cool down and make sure the light is off.
-  When the motor warning light is on, Please contact customer service for support.

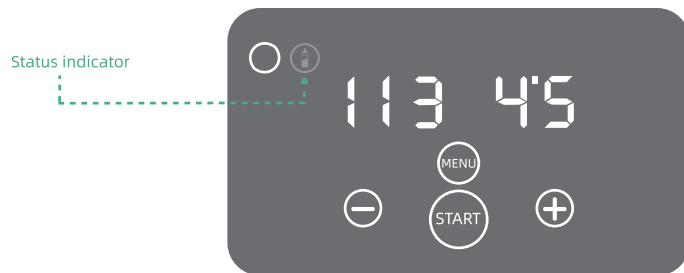
Operating Instructions

Wi-Fi Connect



Download the LivingEZ app and Connect your device to Wi-Fi. Press "+" button and hold 10 seconds, the machine will beep and enter connection mode. The Wi-Fi indicator start to flash which means that the machine is ready to connect to your Wi-Fi. Please go to page 15 "How to make the first bottle of your baby formula" for more details.

Formula Mode



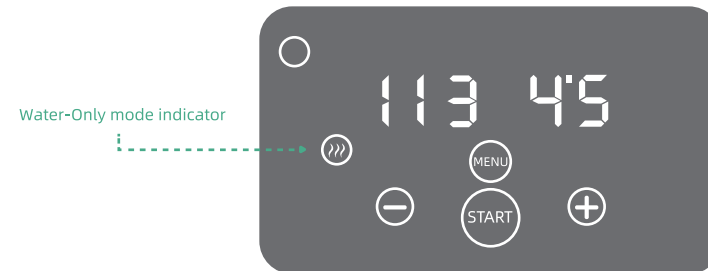
"Formula Mode" is the default mode. If the status indicator light keeps flashing, it means the water is being heated. Press the "-"/"+" button to adjust the water volume; and the number on the right is the current volume. When the status indicator light stays on, press "START" to dispense formula.

Attention

The machine is equipped with a bottle sensor to prevent milk overflow caused by unintentionally touching the start button after dispensing. During the second dispensing, please remove and reposition the bottle before the machine can be started. In addition, this function can be turned off in the app settings.

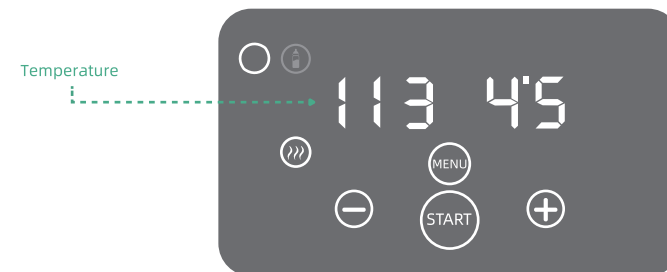
Operating Instructions

Water-Only Mode



Press the MENU button and switch to "Water-Only" mode, the water only indicator will light up. The blinking light indicates that the water is heating up. Press the "-"/"+" button to adjust the water volume. The steady light indicates that the heating is completed. Press "START" to dispense the warm water.

Temperature Adjustment



Press the "MENU" button and switch to "Temperature Adjustment" function. The temperature value will start to flash. Press the "-"/"+" button to adjust the temperature value.

Operating Instructions

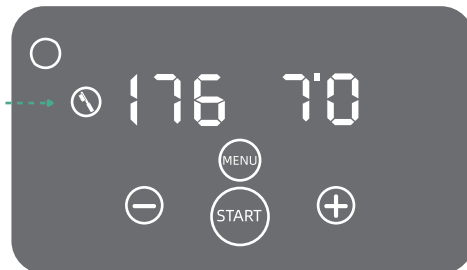
Formula Ratio Setting



Press the "MENU" button and switch to "Formula Ratio Setting" mode (C2 Mode). Set the formula concentration according to your formula manufacturer. This value represents milk powder (g)/1oz (30ml) water. Press "-" / "+" button to adjust. Or you can download LivingEZ App and select your formula manufacturer on the App, LivingEZ App will upload your setting to machine and set Formula concentration automatically.

High-Temp Cleaning Mode

High-Temp Cleaning

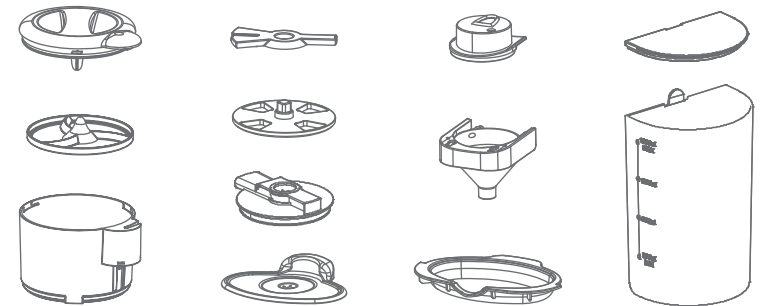


Press and hold "MENU" for 3 seconds will enter "High-Temp cleaning" mode. The indicator light will turn on. While the indicator light flashes, it means that the machine is heating up. The long light indicates that the heating is completed. Press "START" to clean. Note: Please do not stay in this mode all day.

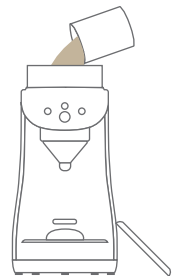
Prepare Before Dispensing Formula

- 1 Please clean and dry the following parts before use:

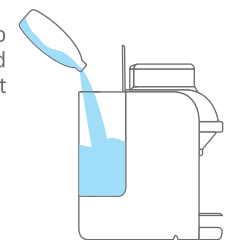
(Note: Please clean following parts using warm water only: Powder Box, Powder Box Cover, Water Tank, Water Tank Cover, Adjustment Tray, and Water Tray. High temperature could cause damage or deformation and should be avoided.)



- 2 Fill formula powder into the powder box (preferably 300g, no more than 400g) and close the powder box cover

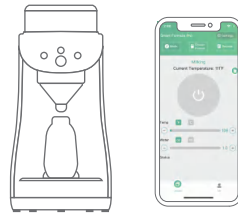


- 3 Fill up water tank with filtered water only. Do not exceed the maximum level (around 1,800ml). Then turn on the machine and put baby bottle on the tray



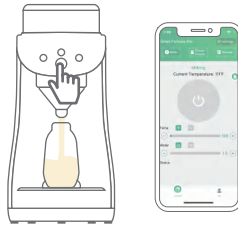
4

Set water volume and temperature on the machine panel or Living EZ app.



5

Wait for the Formula indicator light up steadily, indicating that the heating is completed. Then Press "Start" button on the machine panel or LivingEZ App to dispense your perfect baby formula.



NOTE

If you place the bottle on the tray correctly, the bottle warning indicator will turn off and the white light will turn on to confirm that the bottle has been well placed.



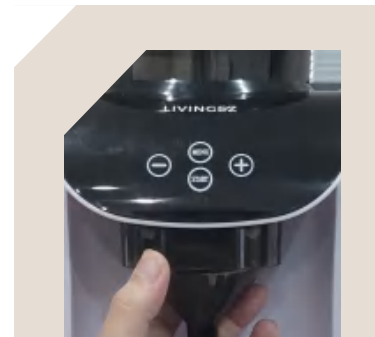
Adjust the tray to the right height.



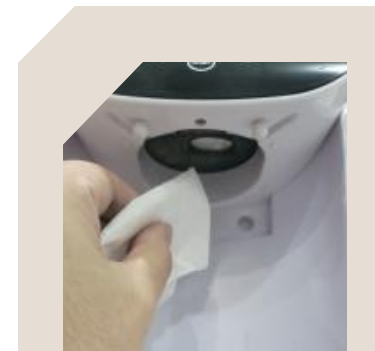
White light is on.

Cleaning and Care

Daily



Remove Funnel & Funnel Cover by pulling out and down. Wash Funnel & Funnel Cover with warm, soapy water & rinse well.
Note: Dry completely before re-installing.



Wipe the powder-dispensing hole on the underside of the powder box using a dry paper towel or soft dry cloth.

VERY IMPORTANT

NOTE: You don't have to remove the powder box or the powder box parts for daily cleaning.

Weekly



Once all formula powder in the powder box has been used up, remove and clean powder box.

Note: To remove the powder box, use your both hand and pull it out.



Remove the bottle tray and clean the water in the bottom once a week.

5 How To Make the First Bottle of Your Baby Formula

1. Download LivingEZ

Scan the QR code using your smart phone camera and follow the pop up instruction or go directly to Apple App Store (iOS device) or Google Play (Android Device) and search for LivingEZ app.



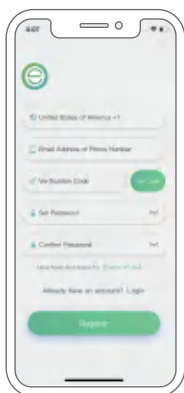
iOS 9.0 & up

Android 4.1 & up



2. Sign up

Create your account



3. Connect to a Wi-Fi network

Press and hold “+” button for 10 seconds, the machine will beep and enter connecting mode. The Wi-Fi indicator will keep flashing, then click the “NEXT”.

Connect to the same Wi-Fi as your smart device (phone or tablet) is connected, please wait for a few minutes until connection is finished.

