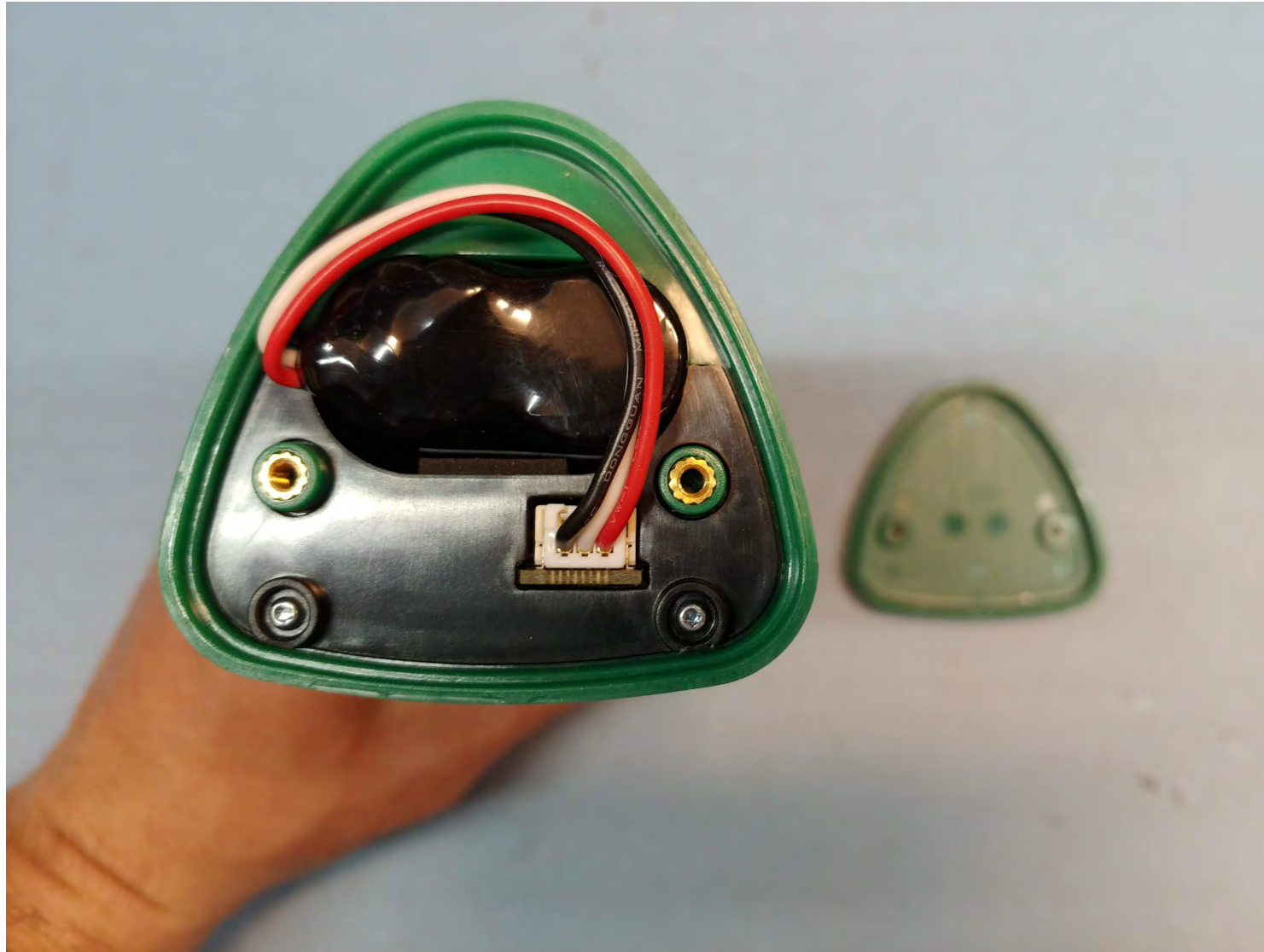


AccuPoint “Phoenix”

Internal Photos – 05/08/2020



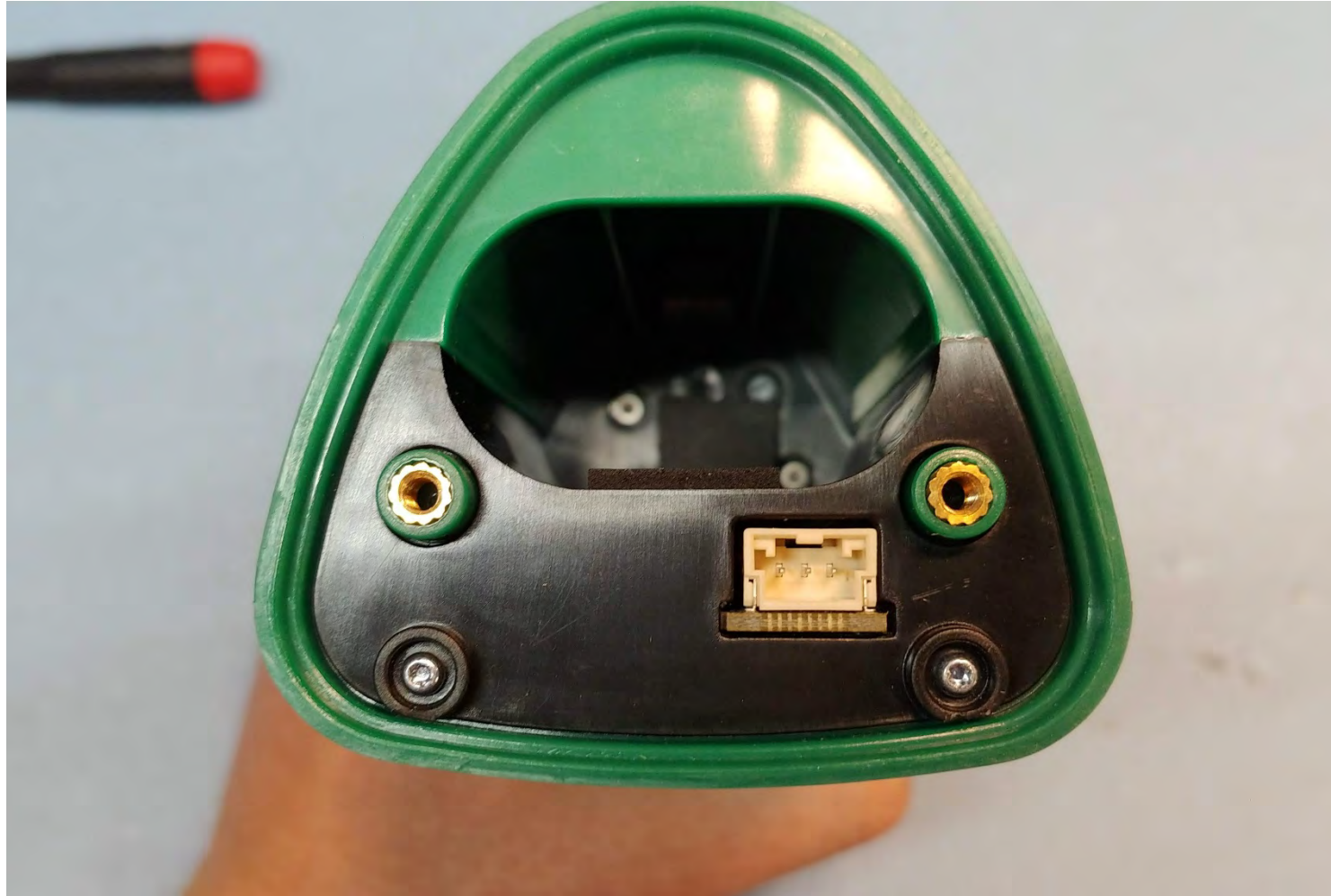
Bottom View – Cover Removed



Inside of Bottom Cover



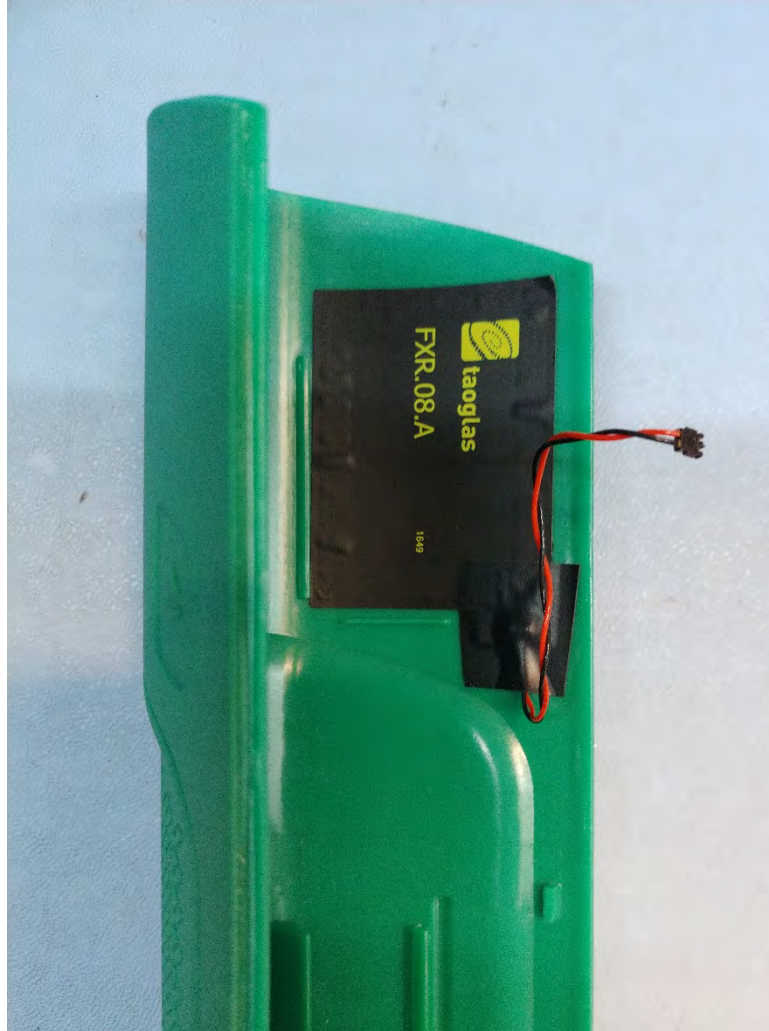
Main Power Battery



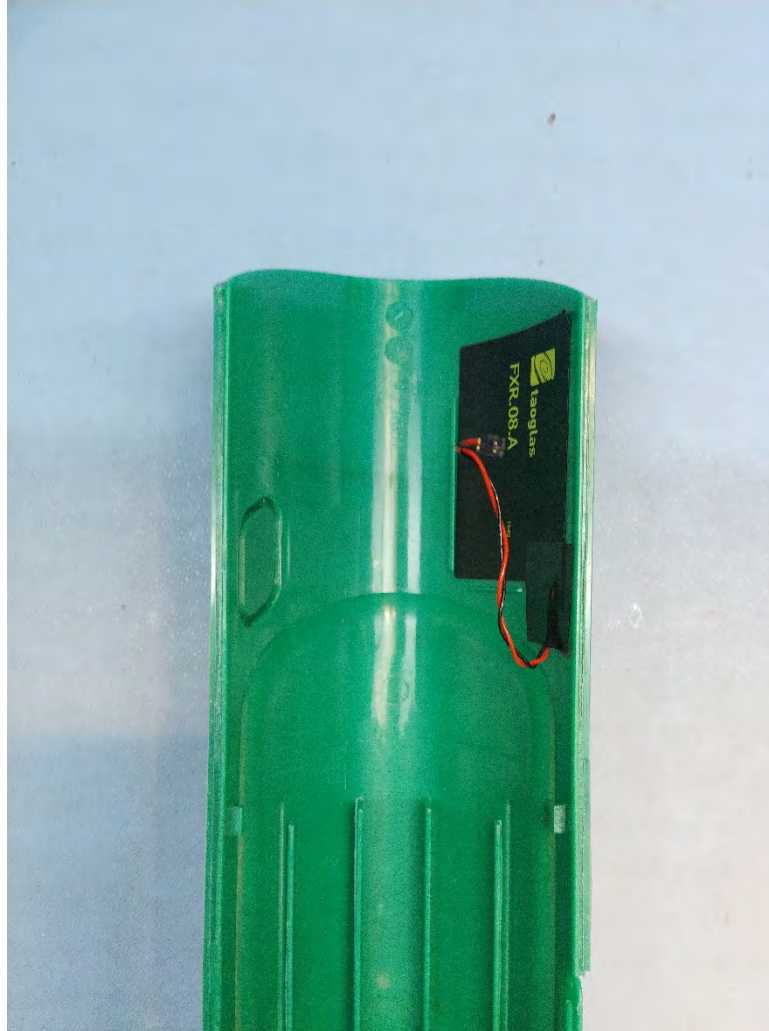
Bottom View – Battery Removed



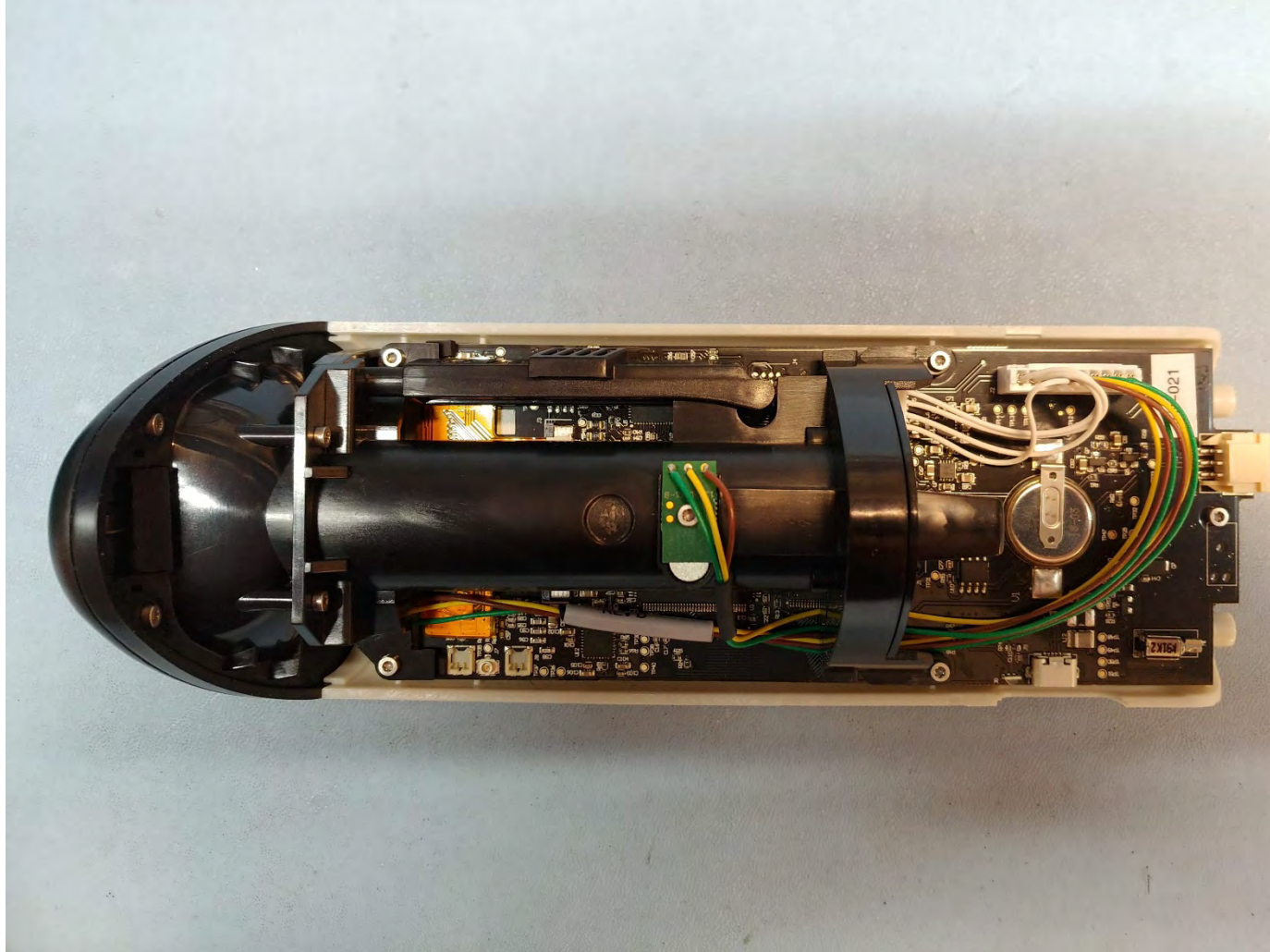
Bottom View – Battery Sleeve Removed



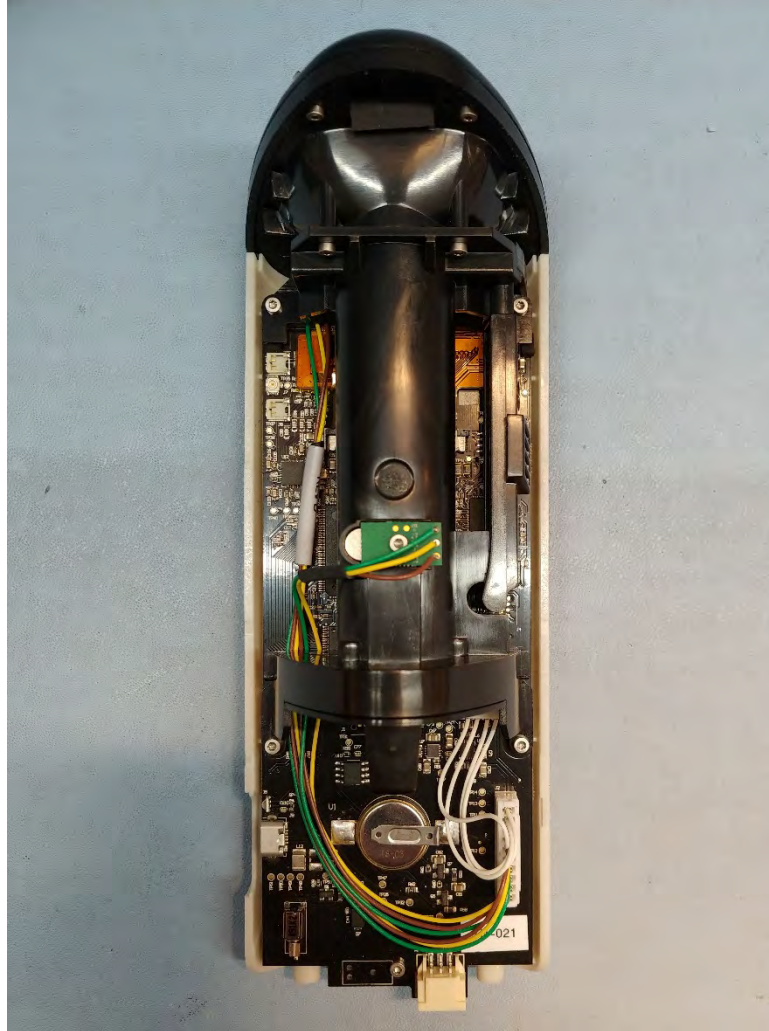
Interior of Removed Rear Cover (Angle) – RFID Antenna Shown



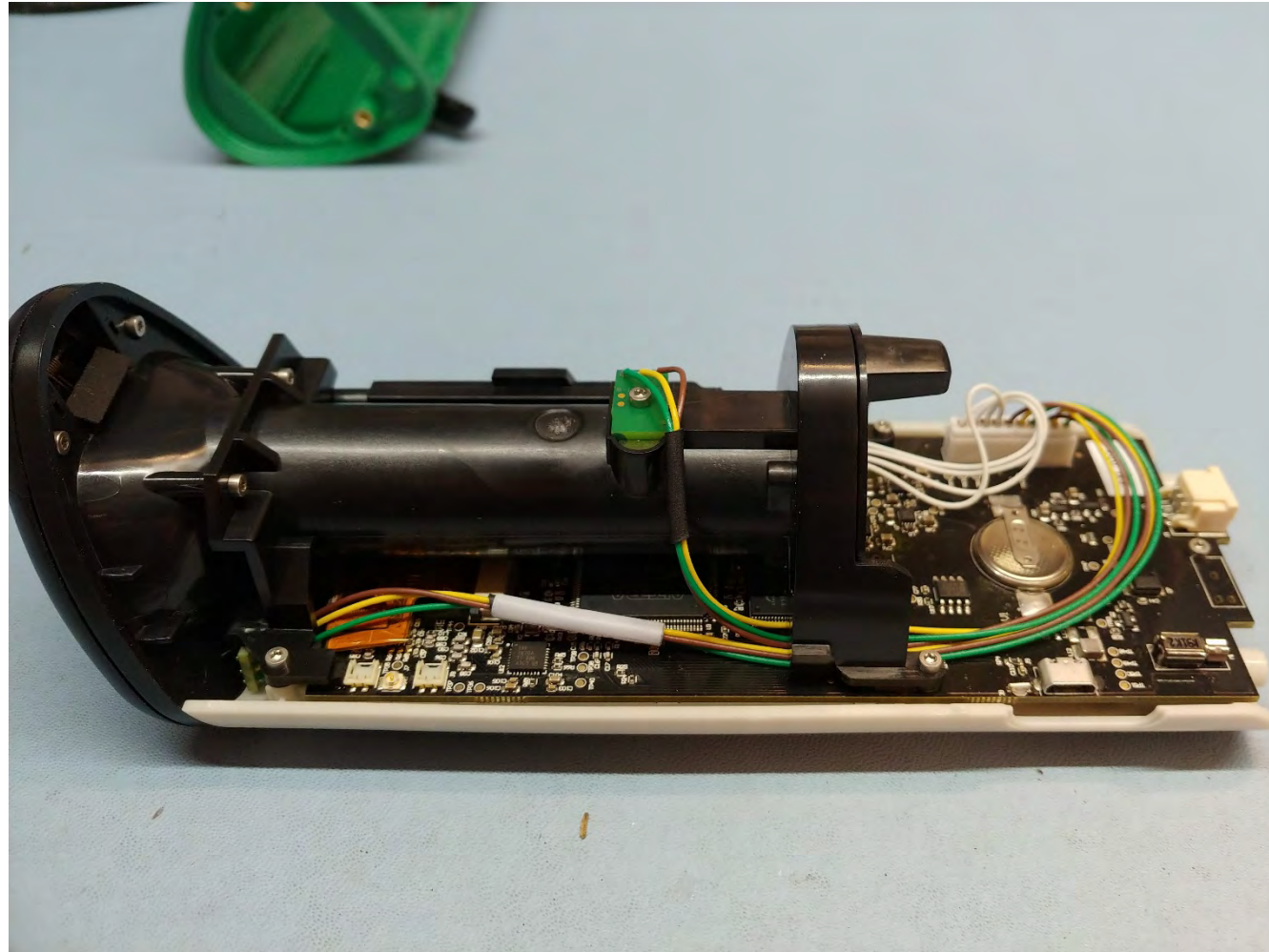
Interior of Removed Rear Cover (Head On)— RFID Antenna Shown



Rear View (Horiz) – Rear Cover Removed



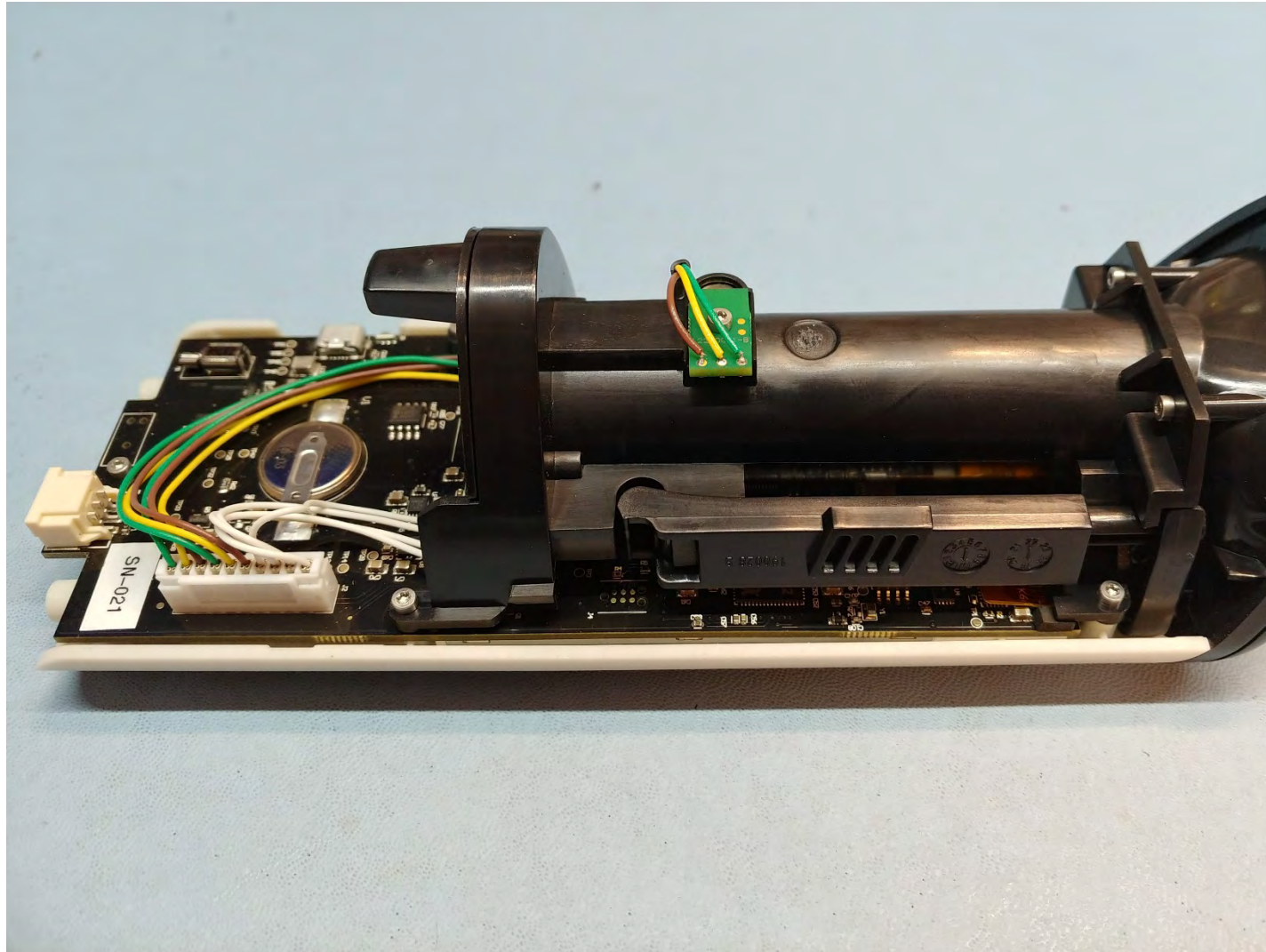
Rear View (Vert) – Rear Cover Removed



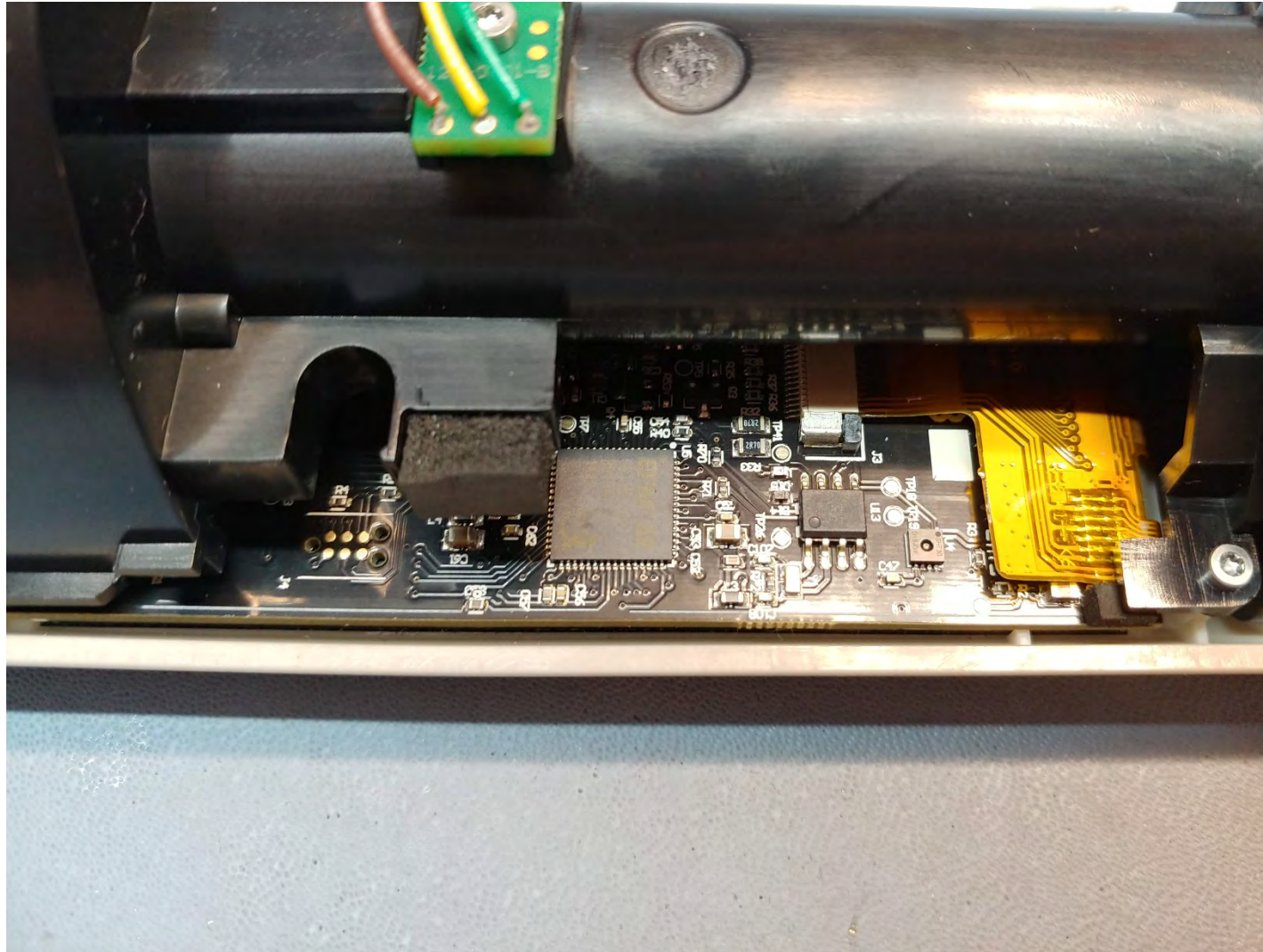
Right Side – Rear Cover Removed



Bottom – Rear Cover Removed



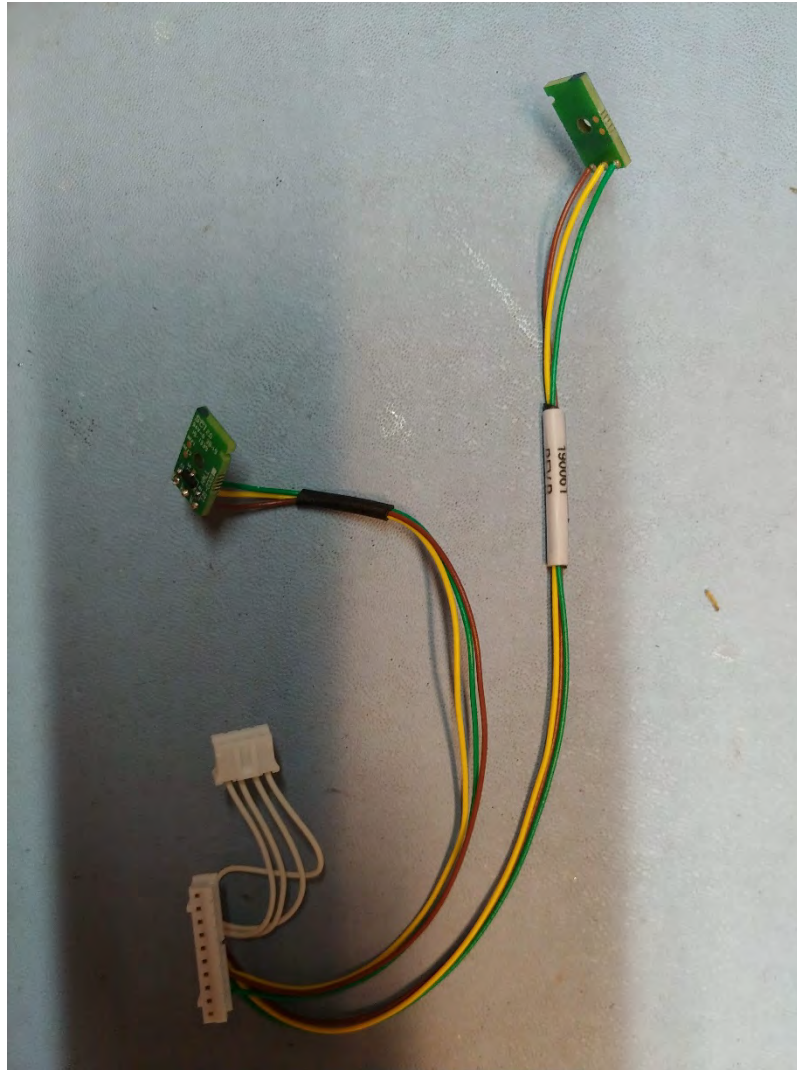
Left Side – Rear Cover Removed



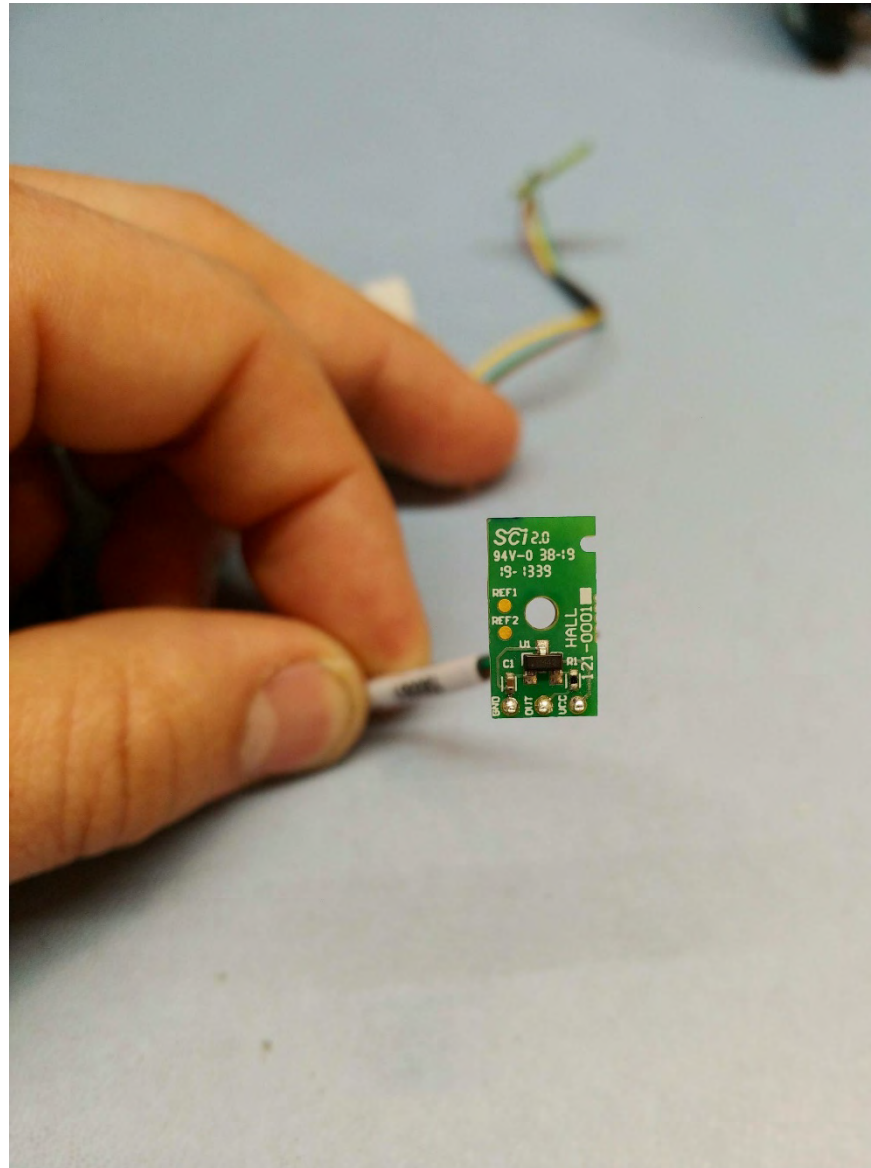
Left Side (Close Up) – Rear Cover Removed



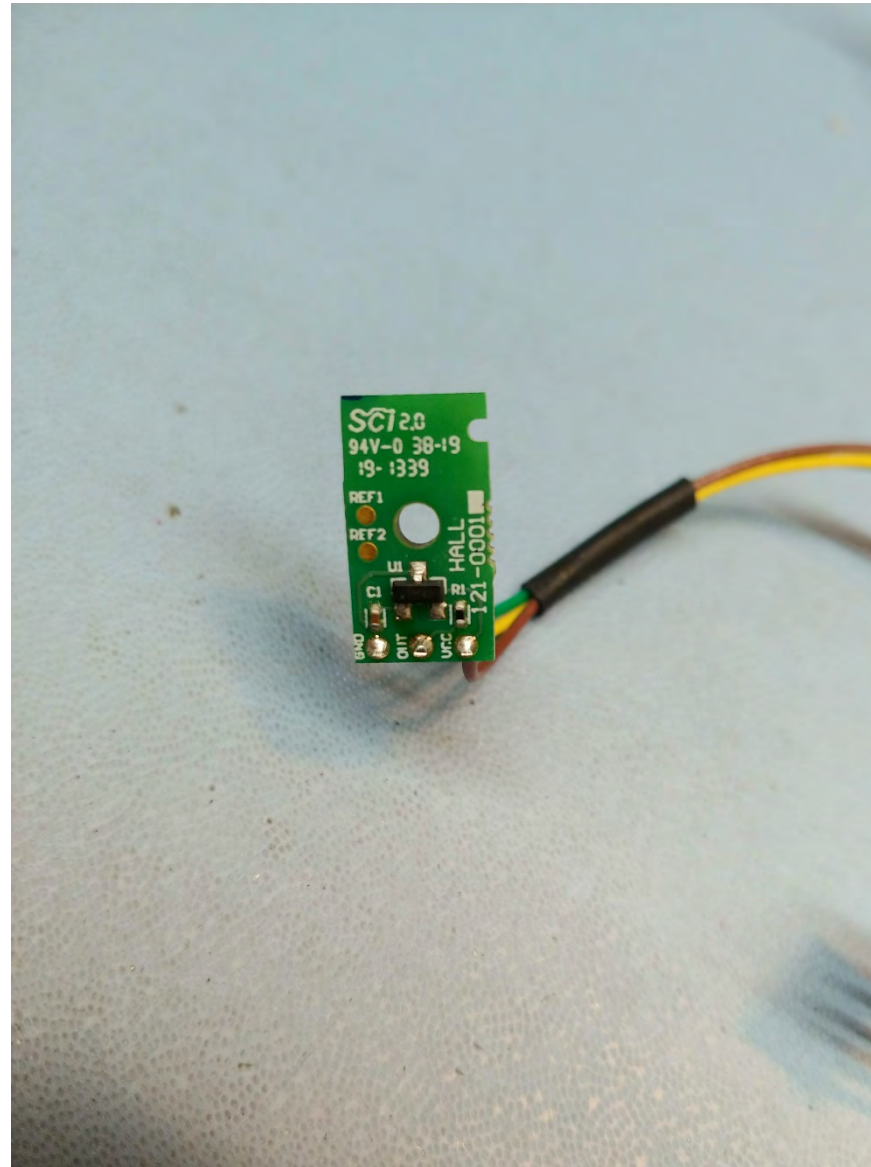
Bottom (Close Up) – Rear Cover Removed



Mainboard to Optical board (white) and Hall Sensor magnets (green) wiring harness



Hall Sensor 1 – Door open/close



Hall Sensor 2 – Sampler Presence



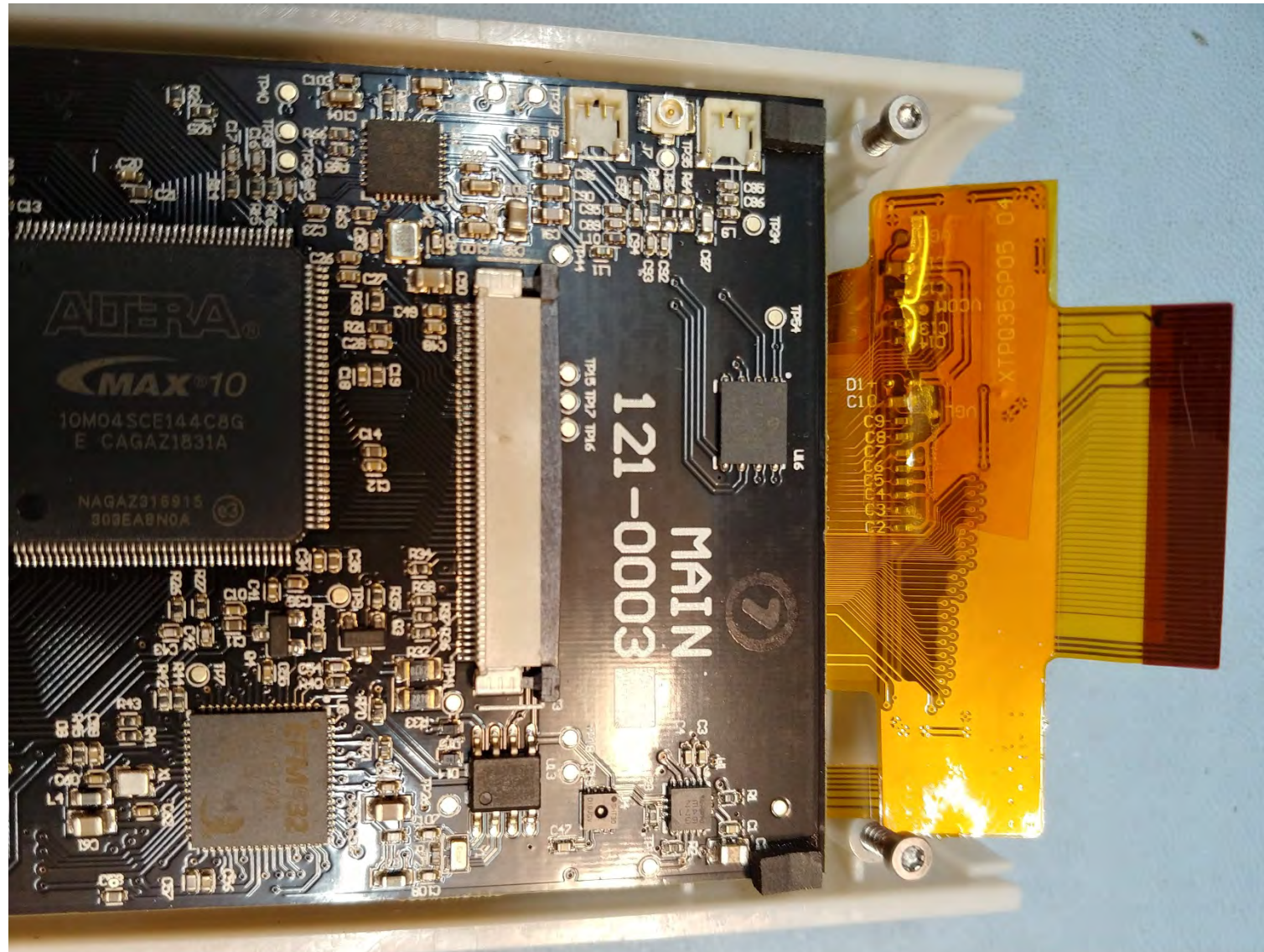
Right Side – Optical tube with Sampler Funnel attached



Rear View – Mainboard attached to Front Cover



Right Side – Mainboard attached to Front Cover



Rear View – Top of Mainboard with LCD ribbon disconnected



Rear View – Interior of Front Cover with Mainboard and LCD removed – Silicone Control Pad shown in black



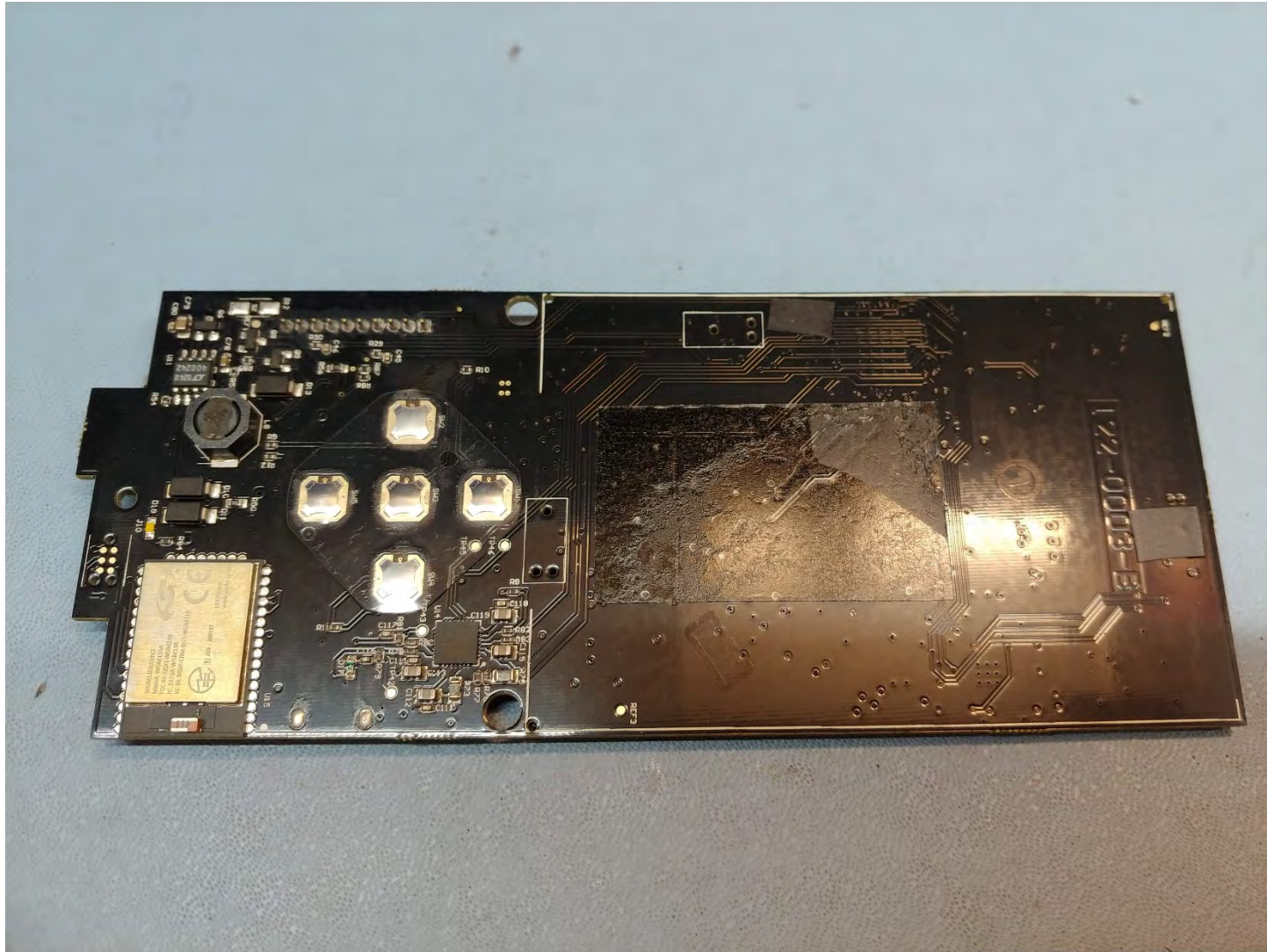
Front –Silicone Control Pad



Rear View – Interior of Front Cover with Mainboard and LCD removed – Silicone Control Pad removed



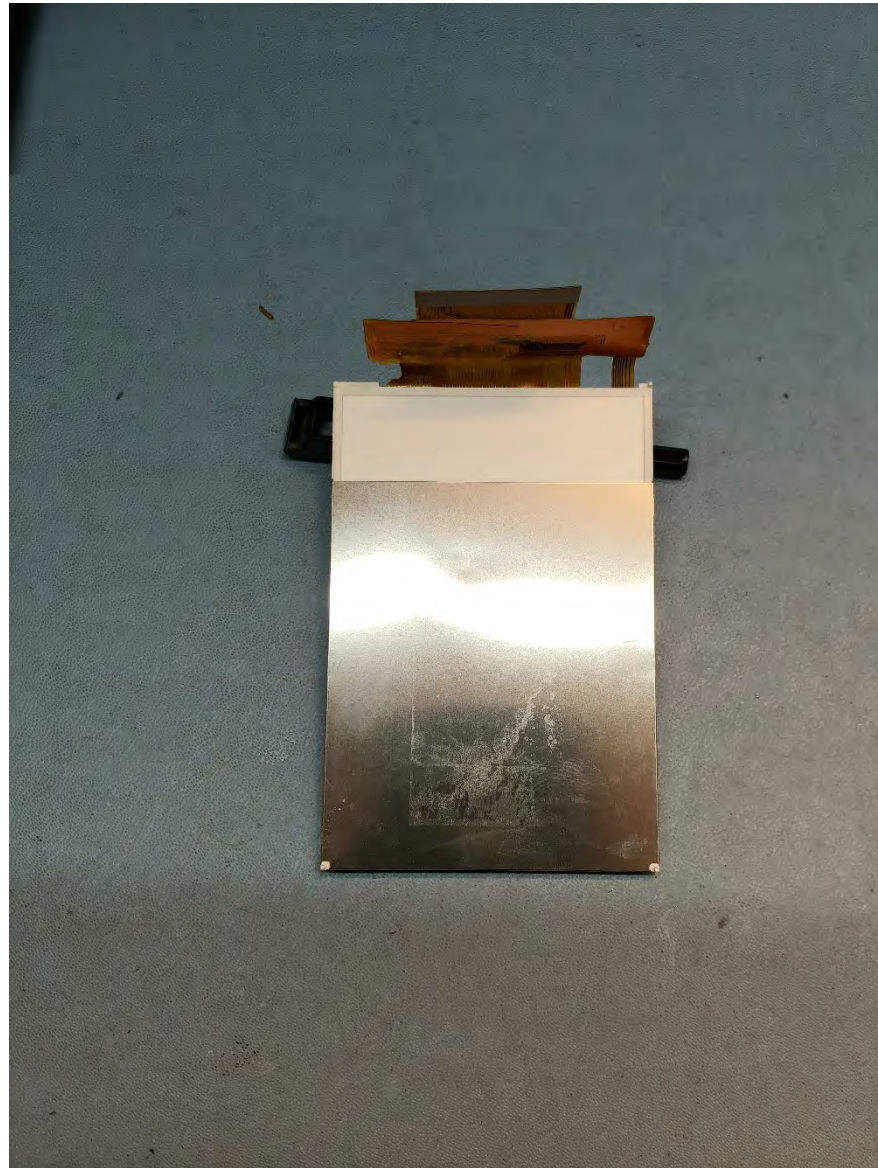
Front View – Mainboard with LCD removed



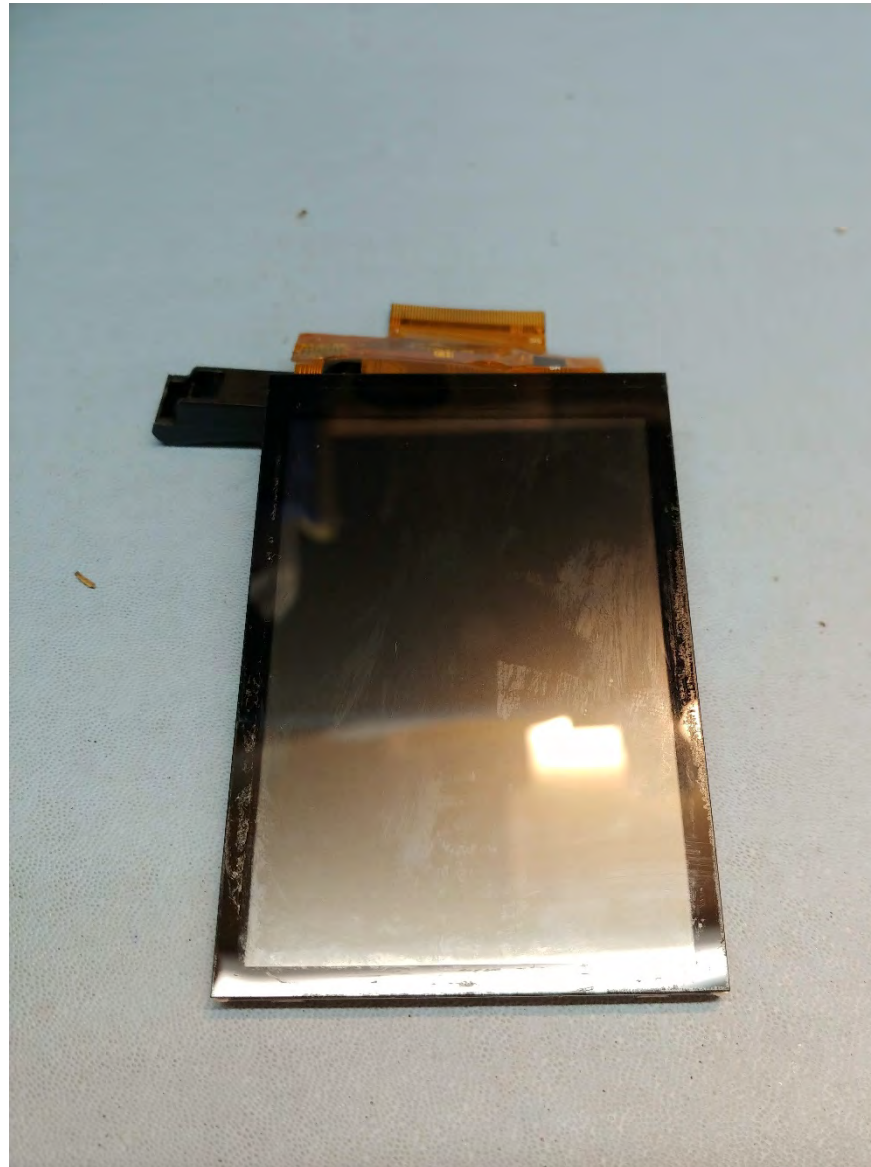
Right Side – Mainboard with LCD removed



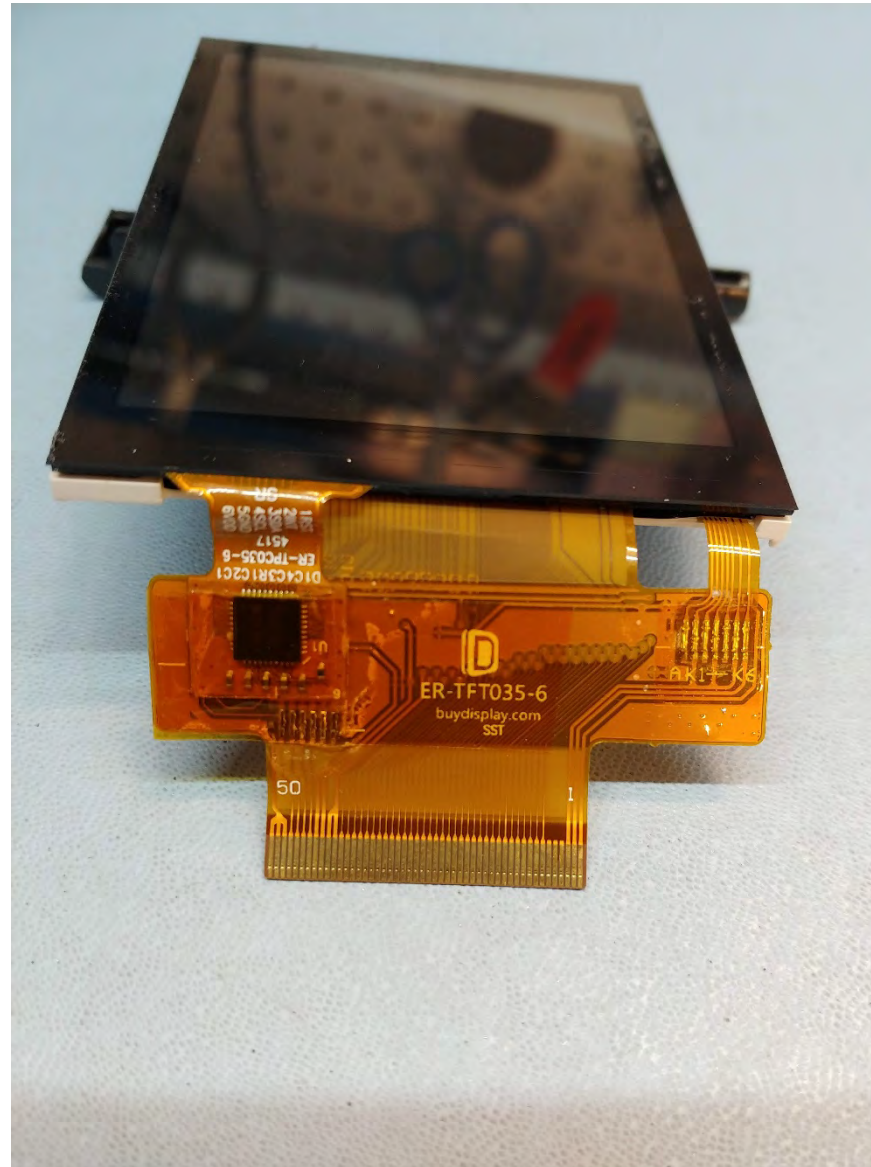
Rear View – Mainboard



Rear View – Rear of LCD Panel



Front View – Front of LCD Panel



Top View – LCD Panel with Ribbon Connector highlighted



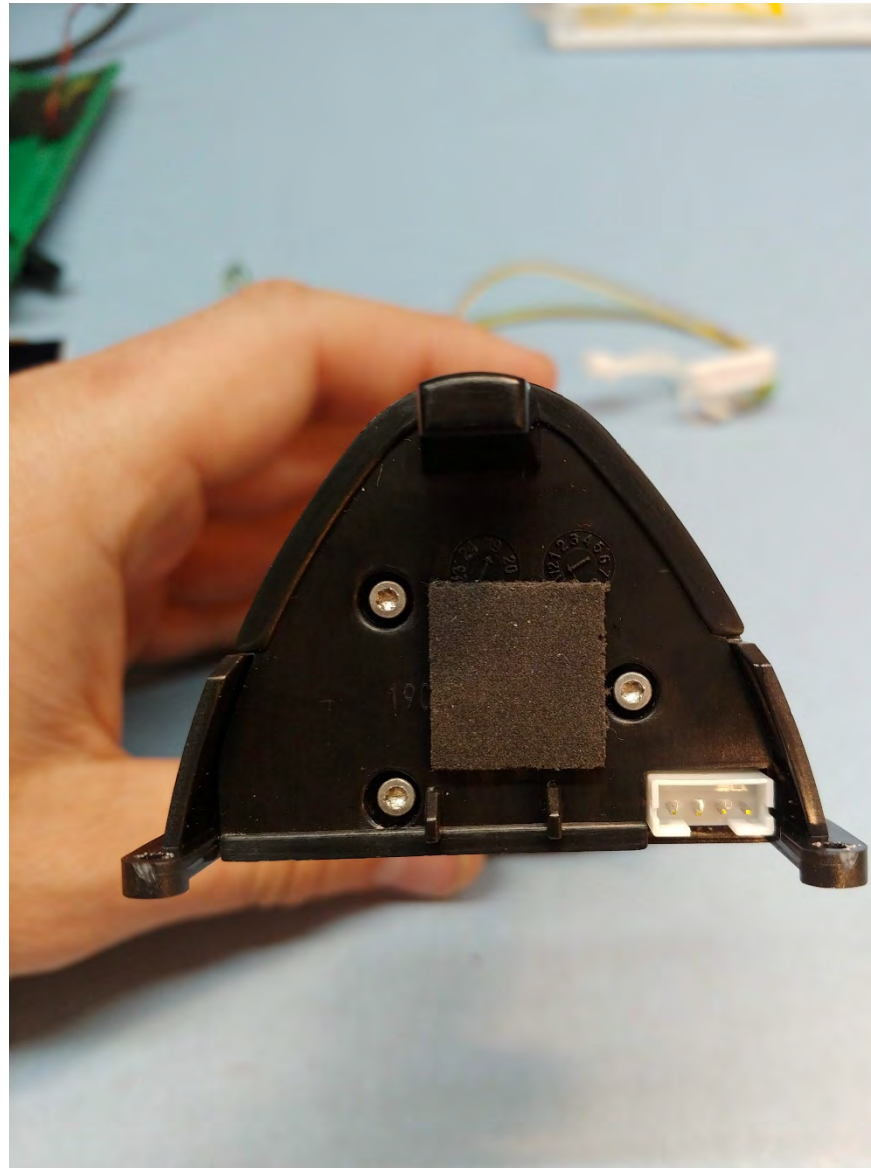
Front View – Interior of Lid



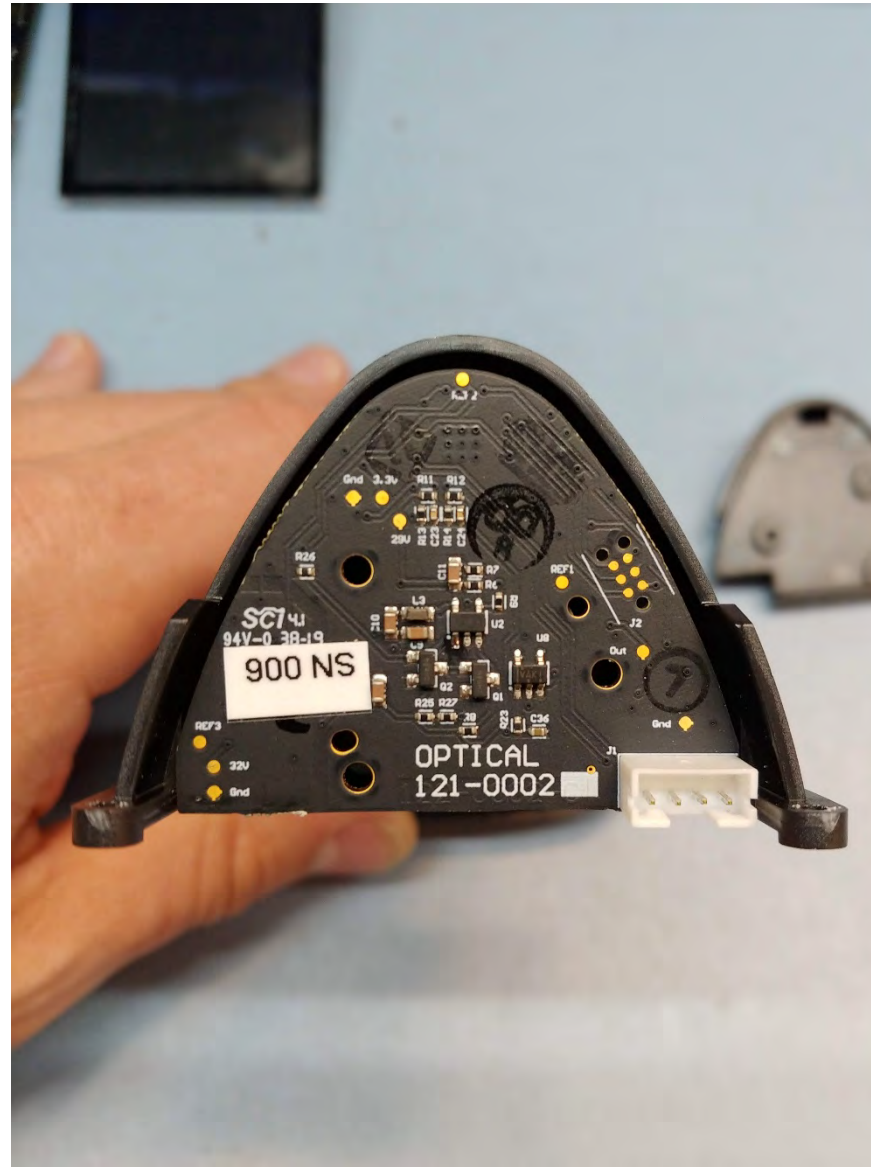
Left Side – Optical Tube and Sampler Funnel with Lid open



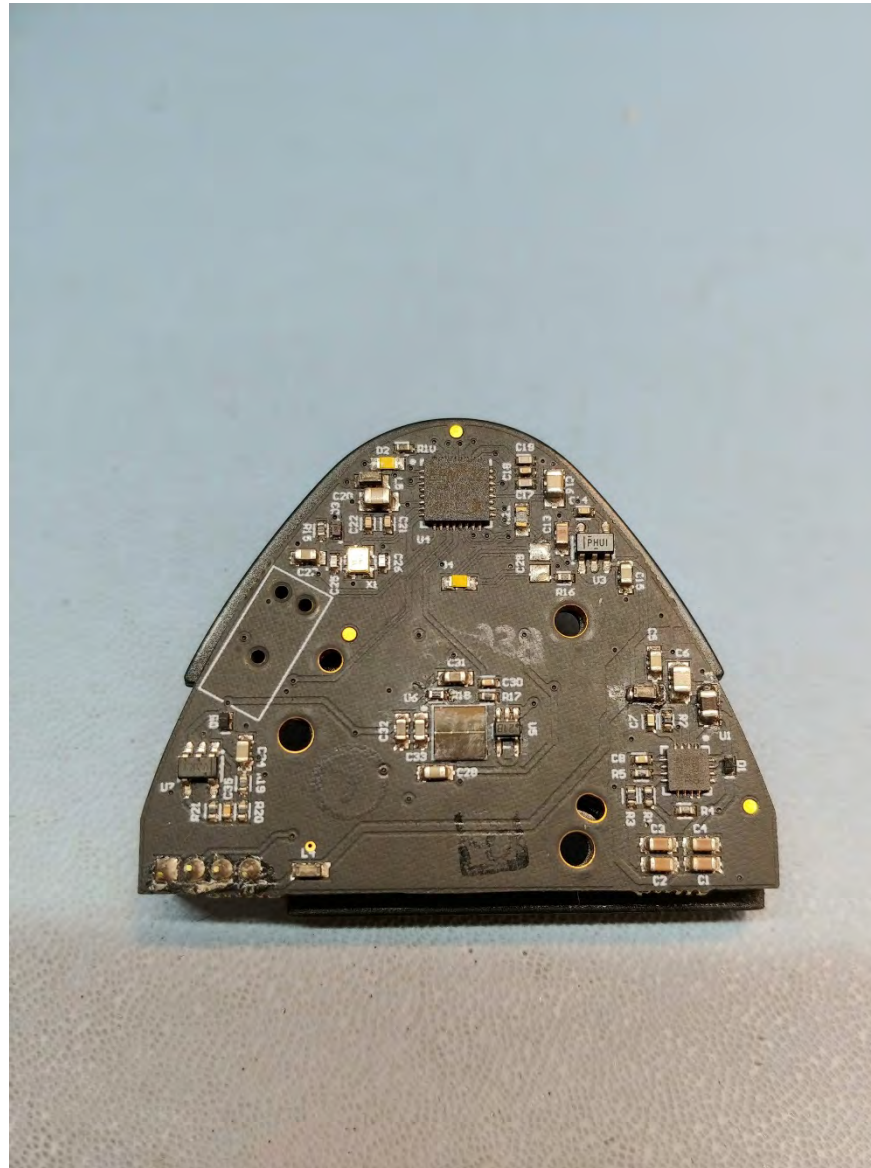
Front View– Optical Tube and Sampler Funnel with Lid open



Bottom – Optical Tube with cover over Optical Board



Bottom – Optical Tube with cover removed, showing Optical Board



Top View – Optical Board shown with Sensor at center



Bottom View – Optical Tube Lensing shown with Optical Board removed