



## **INSTRUCTION MANUAL**

OPERATION INSTRUCTION, SERVICE CENTERS AND  
GUARANTEE POLICY.

**WARNING:** READ THIS INSTRUCTION BEFORE  
USING THE PRODUCT.

**DW18903PR-6H**

**6GALLON (23 L) PORTABLE WET/DRY VACUUM**

If you have questions or comments, contact us.

**1-888-899-0146**

**⚠ WARNING:**

*Use only extension cords that are rated for outdoor use. Extension cords in poor condition or that are too small in wire size can pose fire and shock hazards. To reduce the risk of these hazards when using an extension cord, be sure it is in good condition and that the connection does not come into contact with liquid. To keep power loss to a minimum, use the following table to choose the minimum wire size extension cord.*

Extension Cord Length	Gauge A.W.G.
0 - 50 ft.	14
50 - 100 ft.	12

Fig. A

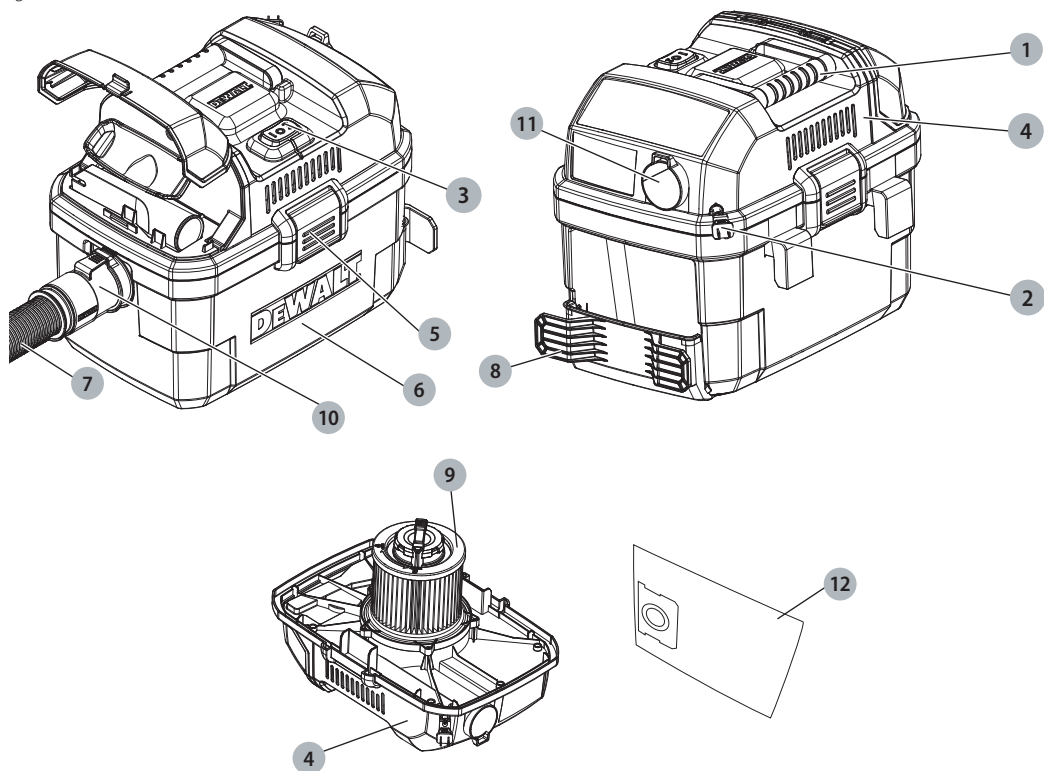


Fig. B

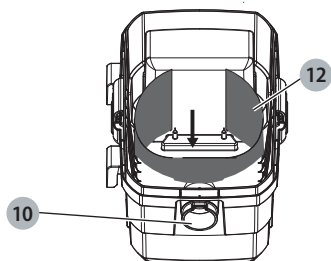


Fig. C

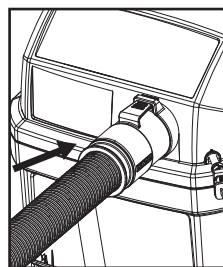


Fig. D

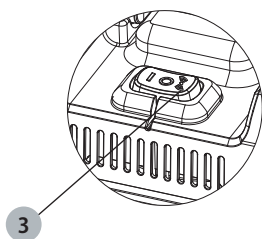
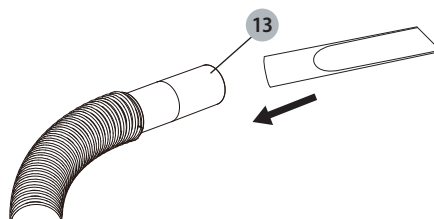


Fig. E



O= OFF    I= ON     = Remote Control

Fig. F

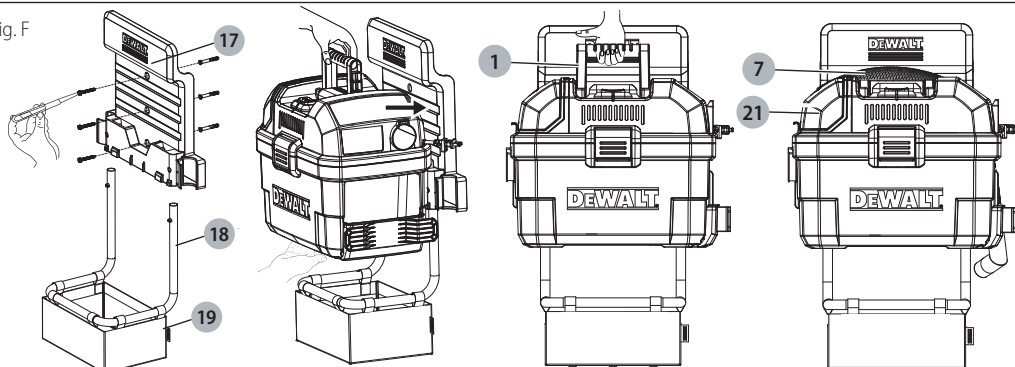


Fig. G

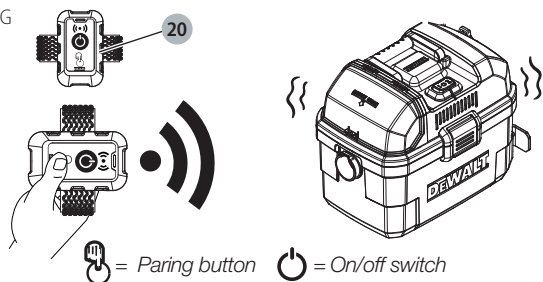


Fig. I

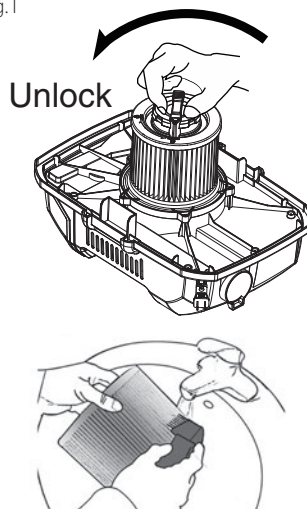


Fig. H

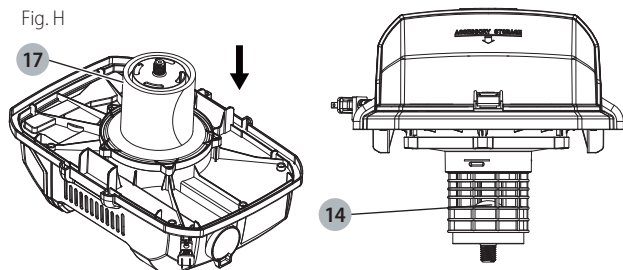


Fig. J

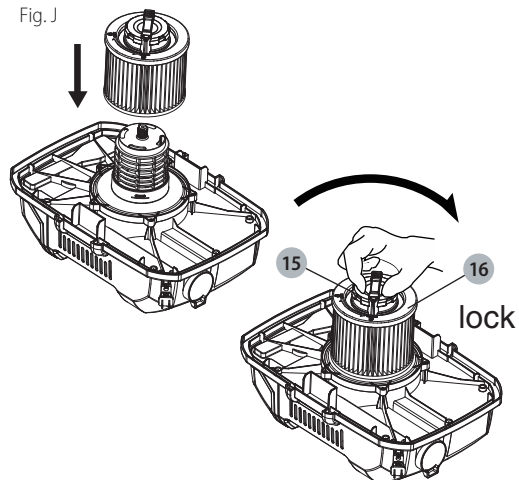
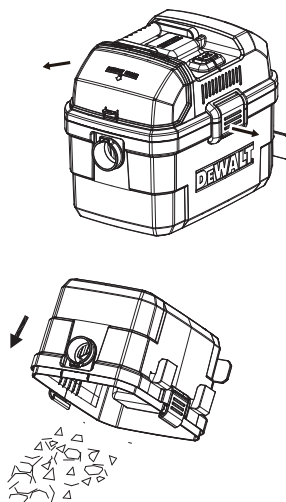


Fig. K



## PRODUCT SPECIFICATIONS

Model	DW18903PR-6H
Tank Capacity	6 Gallon
Power	120 V / 60 Hz / 9 A
Peak	5 HP
Hose	Flexible 1-7/8" x 5' to 20'
Power cord	SJTW18AWG / 10 ft. Length
Remote control	
Model	FVYK01
Voltage	DC3V

### Package Contents

The package contains:

- 1 1-7/8" x 5' to 20' Flexible Hose
- 2 Extension Wand
- 1 Crevice Nozzle
- 1 Floor Nozzle
- 1 Claw Nozzle
- 1 Muffler
- 1 Utility Nozzle
- 1 Round Brush
- 1 Disposable Dust Bag
- 1 Clean Connect™ Filter
- 1 Accessory Bag
- 1 Foam Filter
- 1 Instruction Manual
- 1 Wall Bracket
- 1 Accessory Bag Bracket
- 1 Remote Control

- Check for damage to the tool, parts or accessories which may have occurred during transport.
- Take the time to thoroughly read and understand this manual prior to operation.

### DEFINITIONS: SAFETY GUIDELINES

The definitions below describe the level of severity for each signal word. Please read the manual and pay attention to these symbols.

**▲ DANGER:** Indicates an imminently hazardous situation which, if not avoided, will result in death or serious injury.

**▲ WARNING:** Indicates a potentially hazardous situation which, if not avoided, could result in death or serious injury.

**▲ CAUTION:** Indicates a potentially hazardous situation which, if not avoided, may result in minor or moderate injury.

**NOTICE:** Indicates a practice not related to personal injury which, if not avoided, may result in property damage.

### IMPORTANT SAFETY INSTRUCTIONS

**▲ WARNING:** When using electric appliances, always follow basic safety precautions to reduce the risk of fire, electric shock and personal injury, including the following:

**BEFORE USING THIS APPLIANCE, READ AND FOLLOW ALL INSTRUCTIONS.**

**▲ WARNING:** To reduce the risk of electric shock. Do not expose to rain. Store indoors.

- Do not leave the appliance when it is connected to a power source. Unplug it from outlet when not in use and before servicing.

- Do not allow the appliance to be used as a toy. Pay close attention when the appliance is used by or near children.
- Use this appliance ONLY as described in the manual. Use only ALTON recommended attachments.
- Do not use this appliance with a damaged cord or plug. If the appliance is not working correctly, or if it has been dropped, damaged, left outdoors, or dropped in water, return it to a service centre.
- Do not pull or carry this appliance by the cord, use the cord as a handle, close a door on the cord, or pull the cord around sharp edges or corners. Do not run the appliance over the cord. Keep cord away from heated surfaces.
- Do not unplug this appliance by pulling on the cord. To unplug, grasp the plug, not the cord.
- Do not handle the plug or appliance with wet hands.
- Do not put any objects into the openings of the appliance. Do not use the appliance with any opening blocked; keep free of dust, lint, hair and anything else that may reduce air flow.
- Keep hair, loose clothing, fingers, and all body parts away from the openings and moving parts.
- Turn off all controls before unplugging appliance.
- Use extra care when cleaning on stairs.
- Do not use the appliance to pick up flammable or combustible liquids, such as gasoline, or use in areas where flammable or combustible liquids are present.
- Static shocks are possible in dry areas or when the relative humidity of the air is low. This is only temporary and does not affect the use of the vacuum. To reduce the frequency of static shocks, add moisture to the air with a console, installed humidifier or use anti-static hose (standard on some models).
- To avoid spontaneous combustion, empty canister after each use.

**▲ CAUTION:** This appliance is not intended for use by persons (including children) with reduced physical, sensory or mental capabilities, or lack of experience and knowledge, unless they have been given supervision or instruction concerning use of the appliance by a person responsible for their safety. Children should be supervised to ensure that they do not play with the appliance.

This device complies with Part 15 of the FCC. Operation is subject to the following two conditions: (1) this device may not cause harmful interference, and (2) this device must accept any interference received, including interference that may cause undesired operation.

### SAVE THESE INSTRUCTIONS

#### ADDITIONAL SAFETY RULES

- Do not pick up anything that is burning or smoking, such as cigarettes, matches, or hot ashes.
- Do not use to vacuum combustible explosive materials, such as coal, grain, or other finely divided combustible material.
- Do not use to vacuum hazardous, toxic or carcinogenic materials, such as asbestos or pesticide.
- Never pick up explosive liquids (e.g. gasoline, diesel fuel, heating oil, paint thinner, etc.), acids or solvents.
- Do not use vacuum without filters in place, except

## English

as described under Wet Pickup Applications.

- Some wood contains preservatives which can be toxic. Take extra care to prevent inhalation and skin contact when working with these materials. Request and follow any safety information available from the material supplier.
- Do not use vacuum as a step ladder.
- Do not place heavy objects on vacuum.
- An extension cord must have adequate wire size (AWG or American Wire Gauge) for safety. The smaller the gauge number of the wire, the greater the capacity of the cable, that is 16 gauge has more capacity than 18 gauge. An undersized cord will cause a drop in line voltage resulting in loss of power and overheating. When using more than one extension to make up the total length, be sure each individual extension contains at least the minimum wire size. The following table shows the correct size to use. If in doubt, use the next heavier gauge. The smaller the gauge number, the heavier the cord.
- If an extension cord is to be used outdoors it must be marked with the suffix W-A or W following the cord type designation. For example – SJTW-A to indicate it is acceptable for outdoor use.

Minimum Gauge for Cord Sets					
Ampere Rating	Volts	Total Length of Cord in Feet (meters)			
	120V	25 (7.6)	50 (15.2)	100 (30.5)	150 (45.7)
	240V	50 (15.2)	100 (30.5)	200 (61.0)	300 (91.4)
More Than	Not More Than	AWG			
0	6	18	16	16	14
6	10	18	16	14	12
10	12	16	16	14	12
12	16	14	12	Not Recommended	

**▲ WARNING:** Always wear proper personal hearing protection that conforms to ANSI S12.6 (S3.19) during use. Under some conditions and duration of use, noise from this product may contribute to hearing loss.

**▲ WARNING:** ALWAYS use safety goggles. Everyday eyeglasses are NOT safety goggles. Also use face or dust mask if area operation is dusty.

**ALWAYS WEAR CERTIFIED SAFETY EQUIPMENT:**

- ANSI Z87.1 eye protection (CAN/CSA Z94.3),
- ANSI S12.6 (S3.19) hearing protection,
- NIOSH/OSHA/MSHA respiratory protection.

**▲ WARNING :** This product can expose the to chemicals including lead, which is known to the State of California to cause cancer, birth defects or other reproductive harm. For more information go to [www.P65Warnings.ca.gov](http://www.P65Warnings.ca.gov).

To reduce your exposure to these chemicals, wear approved safety equipment such as dust masks that are specifically designed to filter out microscopic particles. For your convenience and safety, the following warning labels are on your vacuum.

ON MOTOR HOUSING :

### ▲ WARNING:

- TO REDUCE THE RISK OF INJURY, USER MUST READ INSTRUCTION MANUAL. DO NOT RUN UNATTENDED. DO NOT PICK UP FLAMMABLE, COMBUSTIBLE OR HOT

MATERIALS. DO NOT USE AROUND EXPLOSIVE DUST, LIQUIDS OR VAPORS. ELECTRICAL DEVICES PRODUCE ARCS OR SPARKS WHICH CAN CAUSE FIRE OR EXPLOSION. DO NOT USE AT FILLING STATIONS OR ANYWHERE GASOLINE IS STORED OR DISPENSED. DO NOT VACUUM TOXIC OR CARCINOGENIC MATERIALS OR OTHER HEALTH ENDANGERING MATERIAL SUCH AS ASBESTOS OR PESTICIDES. ALWAYS USE PROPER EYE AND RESPIRATORY PROTECTION. TO REDUCE THE RISK OF ELECTRICAL SHOCK, DO NOT EXPOSE TO RAIN. STORE INDOORS. WHEN SERVICING, USE ONLY IDENTICAL REPLACEMENT PARTS. NOT TO BE USED AS A STEP STOOL.

## OPERATING INSTRUCTIONS

### UNPACKING & SET-UP SUMMARY

1. Pull lid latches in an outward motion, remove power head and some accessories that may have been shipped in the tank.
2. Attach heavy-duty rubberised casters following the instructions in this manual.
3. Before replacing power head, refer to this manual to ensure you have the proper filters installed for your cleaning operation.
4. Replace power head, and apply pressure with thumb to each latch until it snaps tightly in place. Make sure all lid latches are clamped securely.
5. Insert the air hose end into inlet of tank.
6. Attach the extension wands to the accessory end of the hose. Apply slight pressure until fitting is tight.
7. Attach one of the cleaning accessories (depending on your cleaning requirements) on the extension wands. Twist slightly to tighten the connection.
8. Plug the cord into the wall outlet. Your cleaner is ready for use.

### ▲ WARNING:

To reduce the risk of fire or explosion, do not operate this vac in areas with flammable gases, vapors or explosive dust in the air. Flammable gases or vapors include but are not limited to: lighter fluid, solvent-type cleaners, oil-based paints, gasoline, alcohol or aerosol sprays. Explosive dusts include but are not limited to: coal, magnesium, aluminum, and grain or gun powder. Do not vacuum explosive dust, flammable or combustible liquids or hot ashes. Do not use this vac as a sprayer for any flammable or combustible liquid. To reduce the risk of health hazards from vapors or dusts, do not vacuum toxic materials.

## IMPORTANT SAFEGUARDS

The symbol on the product or packaging indicates that the product must not be treated as domestic refuse. Instead, it should be handed in to a collection point for the recycling of electrical and electronic components. By ensuring the product is treated in the correct manner, you will help prevent any negative impact on your health and the environment that might arise were the product to be discarded as ordinary refuse. For further information about recycling, you should contact your local authorities, refuse collection service or the sales outlet where you bought the goods.

### Description (Fig. A)

**▲ WARNING :** Never modify the power appliance or any part of it. Damage or personal injury could result.

- 1 Handle
- 2 Power cord
- 3 Power switch
- 4 Vacuum head
- 5 Lid latches
- 6 Dust tank
- 7 Hose
- 8 Accessory box / Cord wrap
- 9 Clean connect™ filter
- 10 Vacuum port
- 11 Blower port
- 12 Disposable dust bag

### Assembly and Adjustments (Fig. A-C)

**▲ WARNING:** To reduce the risk of injury, turn appliance off and disconnect appliance from power source before installing and removing accessories, before adjusting or changing set-ups or when making repairs. An accidental start-up can cause injury.

**▲ WARNING:** The filters 9 must always be in place while vacuuming, except as described under **Wet Pick Up Applications** under **Operation**. When vacuuming fine dust, you may also use an additional paper bag or fleece bag to make emptying the canister easier.

1. If optional paper or disposable dust bag 12 is to be used, install .

**NOTE:** Be careful not to tear the bag. Place bag securely onto vacuum port 10 to provide a tight seal for maximum dust collection performance.

2. Place the vacuum head 4 onto the canister and secure it by closing the canister latches 5 .
3. Insert end of hose 7 into threaded vacuum port 10 and tighten the end of hose on to the tank.

### OPERATION

#### Instructions for Use (Fig. A, D, E)

**▲ WARNING:** Always observe the safety instructions and applicable regulations.

**▲ WARNING:** To reduce the risk of injury, turn appliance off and disconnect appliance from power source before installing and removing accessories, before adjusting or changing set-ups or when making repairs. An accidental start-up can cause injury.

1. Plug the power cord into an appropriate outlet.
2. Turn the power switch 3 to the ON position "I". For remote control use, set the power switch to remote control position "II" and turn the vacuum on by pressing the "⏻" ON button on the remote control.
3. Your ALTON construction dust extractor is fitted with the ALTON connection system. The allows for

a fast, secure connection between the suction hose 7 and power tool. The connector 13 connects directly to ALTON compatible tools or through the use of an adapter (available from your local ALTON upplier). Refer to the Accessories section for detail on available adapters.

**NOTE:** If using an adapter ensure it is firmly attached to the tool outlet before following the steps below.

### OPERATING INSTRUCTIONS

#### Remove / Change Used Dust Collection Bag (Fig. A)

**▲ WARNING:** Appropriate personal protective equipment like dust mask and gloves should be used while handling used dust bags.

1. Turn off vacuum and unplug cord from outlet.
2. Unlatch lid latches 5 and remove vacuum head 4 .
3. Pull the disposable dust bag 12 carefully from vacuum port 10 .
4. Seal the disposable dust bag 12 opening tightly when removing it from the machine.
5. Dispose of disposable dust bag 12 in appropriate container according to statutory provisions.

#### Wet Pick Up Applications (Fig. A, H)

The vacuum requires only a minimum of conversion when going from dry to wet pick up. A clean cartridge filter may be used for vacuuming small amounts of liquids. For best results when vacuuming large quantities of liquid, it is recommended using the foam filter 22 and install the foam filter over filter cage

**▲ WARNING:** If foam or liquid escapes from the machine, switch off immediately.

**▲ WARNING:** Do not use the machine with this set up for dust class L.

The ball float 14 will block air to the motor when the canister is full and the sound of the motor will change at once.

When the motor has a high pitched sound and air/ water flow stops, empty the canister.

1. Turn off vacuum and unplug cord from outlet.
2. Unlatch lid latches 5 and remove vacuum head 4 .
3. Empty contents of dust tank 6 into a suitable container or drain.

**▲ CAUTION:** Clean the water level limiting device regularly and examine it for signs of damage.

**▲ NOTICE:** DO NOT remove ball float 14 , doing so will cause damage to the vacuum. The ball float keeps water from entering the motor.

Before using the vacuum for wet pick up:

- Ensure the canister is empty and free of excessive dust.
- Remove the filter 9 .

#### To Convert Back to Dry Vacuum Operation (Fig. A)

1. Empty canister, refer to empty canister instructions.
2. Place canister upside down position until dry. DO NOT use wet canister for dry pick up.
3. Place vacuum head 4 on a level surface until dry.
4. Reinstall filters when vacuum head is dry. See Filters under Maintenance.
5. When canister is dry place the vacuum head onto the canister and secure it by closing the lid latches 5 .

### Shut Down/Transportation (Fig. A)

1. Turn on/off control switch **3** to the OFF position.
2. Unplug the unit.
3. Store the power cord **2** wrapping it around the bottom accessory box/cord wrap **8**.
4. When transporting in vehicles, secure the machine.

### MAINTENANCE

Your ALTON appliance has been designed to operate over a long period of time with a minimum of maintenance. Continuous satisfactory operation depends upon proper appliance care and regular cleaning.

**▲ WARNING: To reduce the risk of injury, turn appliance off and disconnect appliance from power source before installing and removing accessories, before adjusting or changing set-ups or when making repairs.** An accidental start-up can cause injury.

**▲ WARNING:** For user servicing, the machine must be dismantled, cleaned and serviced, as far as is reasonably practicable, without causing risk to the maintenance staff and others. Suitable precautions include, decontamination before dismantling, provision for local filtered exhaust ventilation where the machine is dismantled, cleaning of the maintenance area and suitable personal protection.

- The manufacturer, or an instructed person, shall perform a technical inspection at least annually, consisting of, for example, inspection of the filter for damage, air tightness of the machine and proper function of the control mechanism.
- When carrying out service or repair operations, all contaminated items which cannot be satisfactorily cleaned, are to be disposed of; such items shall be disposed of in impervious bags in accordance with any current regulation for the disposal of such waste.
- For dust extractors it is necessary to provide for an adequate air change rate  $L$  in the room if the exhaust air is returned to the room.

(NOTE: Reference to National Regulations is necessary.)

### Filter (Fig. A, I, J)

#### Filter care

The filters included with this vacuum are long life filters. To be effective in minimizing dust recirculation, the filters **MUST** be installed correctly and in good condition.

**▲ WARNING:** Appropriate personal protective equipment like dust mask and gloves should be used while handling the filters.

#### To Remove Filters

1. Turn tool control power switch **3** to the OFF position (O) and unplug cord from outlet.
2. Release lid latches **5** and remove vacuum head **4** from canister. Place vacuum head on a level surface upside down.
3. Turn each filter **9** counterclockwise by gripping it on

the plastic end cover as shown, and carefully remove from head, ensuring debris does not fall into mounting hole.

**NOTE:** Use care to not damage filter material.

4. If the bottom side of the vacuum head **4** needs to be cleaned, use a cloth dampened with water and mild soap and allow it to dry. Dispose of cloth in an appropriate container.

5. Inspect filters for wear, tears or other damage.

**NOTE:** If there is any doubt on the condition of the filters they **MUST** be replaced. **DO NOT** continue use if filters are damaged.

**▲ WARNING:** Never use compressed air or a brush to clean filters, otherwise damage to the filter membrane will occur which will allow dust to pass through the filter. If needed, gently tap against a hard surface or rinse with room temperature water and let air dry. Cleaning of the filters is typically unnecessary, even if the filter is covered with dust. The automatic filter cleaning system will maintain maximum performance and continue to function. If visual damage to the filter membrane exists, replace filters. Filters typically last between six and twelve months depending on use and care.

#### To Install Filters

1. Ensure filter seal **15** is in place and is secure.
2. Line up filter threads **16** to vacuum head threads and using moderate force, turn filter clockwise until tight.

**NOTE:** Use care to not damage filter material.

3. Place the vacuum head **4** onto the container and secure it by closing the lid latches **5**.

### Assembly (Fig. F)

#### Wall Bracket Installation **17** :

1. Mark the wall according to the location of the wall mount screws.
2. Punch holes in marked positions.
3. Tape the plastic expansion screws into the holes.
4. Align the wall mount with the holes and tighten the screws.

**▲ WARNING:** Inadequate mounting could allow the unit to fall, causing injury and/or damage to the unit.

#### Installation of Accessory Bag Bracket **18** :

Press and hold the shrapnel of accessory bag bracket **18**, align the wall bracket hole position, push the accessory bag bracket **18** upward, until hearing the "click" sound, and the installation is completed.

#### Attach Vac:

1. Grasp top handle **1** with one hand and place other hand under front of tank.
2. Align tab on back of vacuum (located near top of tank) to engage with slot in center of wall bracket as vacuum is lowered into bracket.
3. Push downward making sure slots on vacuum (located near the bottom of the tank) attach to the tabs located at bottom of bracket.

4. Lower top handle **1** on vacuum to lay flat on top of housing. This will secure unit in bracket.

**Detach Vac:**

1. Push release lever on bracket with thumb, while moving top handle on vacuum to the up position.
2. Grasp top handle with one hand and place other hand under front of tank.
3. Pull upward until vacuum detaches from bracket.

**Resetting the Remote Control (Fig. G)**

1. Set the power switch on the vacuum to the remote control option "II".
2. Make sure the distance between the remote control **20** and the vacuum cleaner for less than 0.5m, press and hold the pairing button **3** of the remote control for more than 3 seconds and the LED will flash, the inside motor makes a sound to indicate a successful pairing.

**To Unpair with the Remote Control (Fig. G)**

Make sure the distance between the remote control **20** and the vacuum cleaner for less than 0.5m, press and hold the pairing button **3** of the remote control for more than 3 seconds and the LED will flash, the inside motor makes a sound to indicate the pairing is invalid.

**Empty the Tank (Fig. K)**

**▲ WARNING:** To reduce the risk of injury from accidental starting, unplug power cord before emptying the dust tank.

1. Remove the power head assembly of the wet/dry vac by pulling outward on the lid clips located on each side of the vac. Lift off the power head assembly.
2. Dump the tank contents into the proper waste disposal container.

**Blowing Operation**

**▲ WARNING:** To avoid injury to bystanders, keep them clear of blowing debris.

**▲ CAUTION:** Wear a dust mask if blowing creates dust which might be inhaled.

**▲ CAUTION:** To reduce the risk of hearing loss, wear ear protectors when using the vac/blower for extended hours or when using it in a noisy area.

**Blowing Feature (Fig. C)**

Your vac contains a blowing feature. It has the capability to blow sawdust and other debris. It can be used to blow dust and debris out of garages or off patios and driveways. Follow the steps below to use your vac as a blower.

1. Locate blowing port on your vac.
2. Insert one end of the 1-7/8" x 5' to 20' flexible hose into the blowing port.
3. Turn vacuum "ON".

**Storage (Fig. A / F)**

Store the power cord **5** wrapping it around the bottom accessory box/cord wrap **8**. The hose may be wrapped around the wall bracket and the accessories stored in the tool box **21** so they can be readily available. Never allow liquids to sit in the tank for any extended period of time. The vacuum should be stored indoors.

**Optional Accessories**

**▲ WARNING:** Since accessories, other than those offered by ALTON, have not been tested with this product, use of such accessories with this appliance could be hazardous.

To reduce the risk of injury, only ALTON recommended accessories should be used with this product.

**CLEANING**

To keep your wet/dry vac looking its best, clean the outside with a cloth dampened with warm water and mild soap.

To clean the tank:

1. Dump out debris.
2. Wash tank thoroughly with warm water and mild soap.
3. Wipe out with dry cloth.

**TROUBLESHOOTING**

**▲ WARNING:**

**TO REDUCE THE RISK OF INJURY FROM MOVING PARTS AND/OR ELECTRICAL SHOCK, TURN POWER SWITCH OFF AND DISCONNECT GROUNDED PLUG FROM ELECTRICAL OUTLET BEFORE PERFORMING TROUBLESHOOTING CHECKS.**

Minor problems often can be fixed without calling customer service.

PROBLEM	SOLUTION
Motor does not run	Check power cord, plugs and outlet.
	Ensure the on/off switch is in the ON position ( I )
Suction capacity decreases	Remove blockages in the suction nozzle, suction tube, suction hose or filters.
	Replace the paper or fleece bag.
	Check for proper installation of the filters.
	Clean or replace the filters.
Vacuum stops running	Empty canister, refer to <b>Empty the tank</b> under <b>Operating. instructions</b>
	Thermal overload has been tripped: 1. Turn the vacuum off and disconnect vacuum cleaner from power source.
	2. Empty the canister, if needed.
	3. Allow the unit to cool.
Dust comes out while vacuuming	4. Plug the power cord into an appropriate outlet and turn on/off switch to the ON position ( I ) to test.
	Check for proper installation of the filters.
	Ensure filters are not damaged; replace if necessary.
	Ensure filter seals are in place and are secure.

**▲ WARNING:** If the power cord is damaged, it must be replaced by the manufacturer, its service agent or similarly qualified persons in order to avoid a hazard.

**English**

**Caution:** This device complies with Part 15 of the FCC Rules.

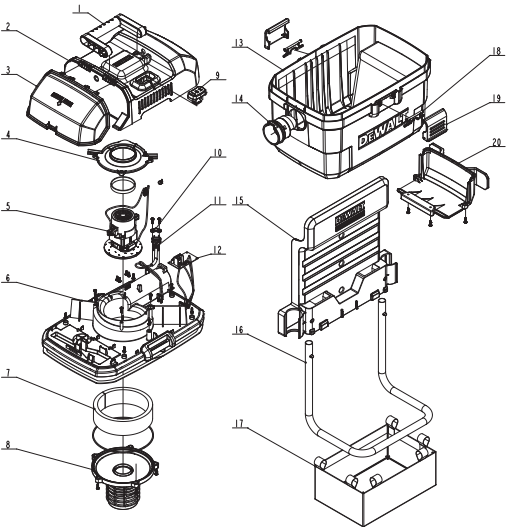
Operation is subject to the following two conditions:  
(1) this device may not cause harmful interference.  
(2) this device must accept any interference received, including interference that may cause undesired operation.

Changes or modifications not expressly approved by the party responsible for compliance could void the user's authority to operate the equipment.

This equipment has been tested and found to comply with the limits for a Class B digital device, pursuant to part 15 of the FCC Rules. These limits are designed to provide reasonable protection against harmful interference in a residential installation. This equipment generates uses and can radiate radio frequency energy and, if not installed and used in accordance with the instructions, may cause harmful interference to radio communications. However, there is no guarantee that interference will not occur in a particular installation. If this equipment does cause harmful interference to radio or television reception, which can be determined by turning the equipment off and on, the user is encouraged to try to correct the interference by one or more of the following measures:

- Reorient or relocate the receiving antenna.
- Increase the separation between the equipment and receiver.
- Connect the equipment into an outlet on a circuit different from that to which the receiver is connected.
- Consult the dealer or an experienced radio/TV technician for help.

**EXPLODED VIEW / PARTS LIST**



PART	DESCRIPTION	QTY
1	Handle	1
2	Top Cover	1
3	Accessories Cover	1
4	Thermal Baffle	1
5	Motor	1
6	Lid	1
7	Sponge	1
8	Filter Cage	1
9	On/off Switch	1
10	Crimping Board	1
11	Power Cord	1
12	Printed Circuit Board Assembly	1
13	Dust Tank	1
14	Vacuum Port	1
15	Wall Bracket	1
16	Accessory Bag Bracket	1
17	Accessory Bag	1
18	Link	2
19	Lid Latch	2
20	Winding Wire Bar	1

## **Alton Industry Ltd. Group**

### **3 year Limited Warranty**

This warranty covers any defects in materials or workmanship of the enclosed product. Alton Industry Ltd. Group will repair or replace any defective materials due to craftsmanship of the product. This warranty does not cover any problem caused by misuse, abuse, accidents or acts of God, such as floods or hurricanes. Consequential and incidental damages are not covered under this warranty. Coverage terminates if you sell or otherwise transfer the ownership. If you feel you have a defective product, please submit a copy of your receipt to the address below and call 1-888-899-0146 for instructions prior returning this item to the store or sending back to:

Alton Industry Ltd. Group

1031 North Raddant Rd

Batavia, Illinois 60510

We will inspect the product and contact you within 72 hours to give you the results of our inspection. We reserve the right to repair or replace the product at our discretion. However, we may replace the product with one of similar but not exact features.

Parts and Service Information available call Alton Industry at 1-888-899-0146.

This warranty gives you specific legal rights. You may have other rights which vary from state to state.