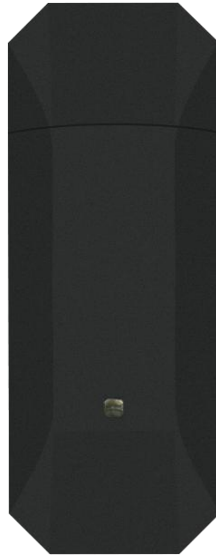


GT25-G

Operation Instructions



Revision History

Modifier	Edition	Change description	Date Changed
Elvira	V1.0	Initial Version	2020/2/27

Note: This document is copyrighted by the content original company and all rights reserved. If the contents of the document are updated, please contact the provider for the latest version without notice

1. Document Description

Description: this document is intended to provide users with a quick understanding of the GT25-G product and its air interface and hardware interface connected to the customer application. This document can help customers quickly understand the hardware interface specification, electrical characteristics, mechanical specifications and other relevant information of GT25-G products. With the help of this document, combined with our product manual and user instructions, customers can quickly apply GT25-G products.

2. Product Introduction

Quectel EC25 is a series of LTE Cat 4 module optimized specially for M2M and IoT applications. Adopting the 3GPP Rel.



Key Benefits

- Support USB/UART communication interface
- Worldwide LTE, UMTS/HSPA+ and GSM/GPRS/EDGE coverage
- Multi-constellation GNSS receiver available for applications requiring fast and accurate fixes in any environment
- LTE Cat 4 Max 150Mbps(DL),Max 50Mbps(UL)
- USB 2.0 High Speed Interface
- Embedded Abundant Protocols)
- USB serial drivers for Windows 7/8/8.1/10,Linux,Android

Application

- Industrial control field
- Industrial equipment
- medical instruments
- Industria IOT
- rugged tablet PC
- Self-service equipment
- Industrial router
- Raspberry
- Vehicle interconnection

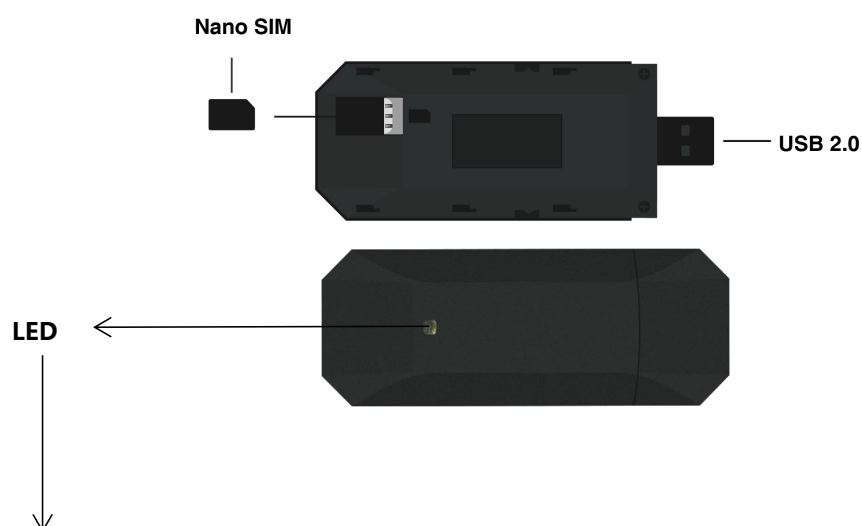
3. Parameter

Basic parameter

Dimensions	94.8 x 36 x 13.1 (mm)
Module	Quectel EG25-G LTE Cat 4 module
Power Consumption	2W (Max)
Antenna	1×4G Main antenna,1×4G auxiliary antenna
Antenna Connector	CRC9X2
Sim card slot	Nano SIM card slot
Opreating Voltage	5V USB
Temperature Range	Operating: -20°C to 60°C Storage: -40°C to 85°C
Humidity	Operating: 5% to 95%(non-condensing) Storage: Max. 90% (non-condensing)
Rate	Max 150Mbps (DL)/ Max 50Mbps (UL)
Host Interface	USB 2.0

Global Usage	LTE : B2/B4/B5/B7/B12/B13/B25/B26/B38/B41 GSM850/1900 WCDMA: B2/B4/B5
---------------------	---

4. Product Appearance



LED Indicator status

Flicker slowly(200ms High/1800ms Low)	Network searching
Flicker slowly(1800ms High/200ms Low)	Idle
Flicker slowly(125ms High/125ms Low)	Data transfer is ongoing

5. Operation Instructions

5.1 Usage Method

5.1.1 Driver Download

Link : <https://pan.baidu.com/s/1o9la4X-xSyYPIOOAQ268UQ>

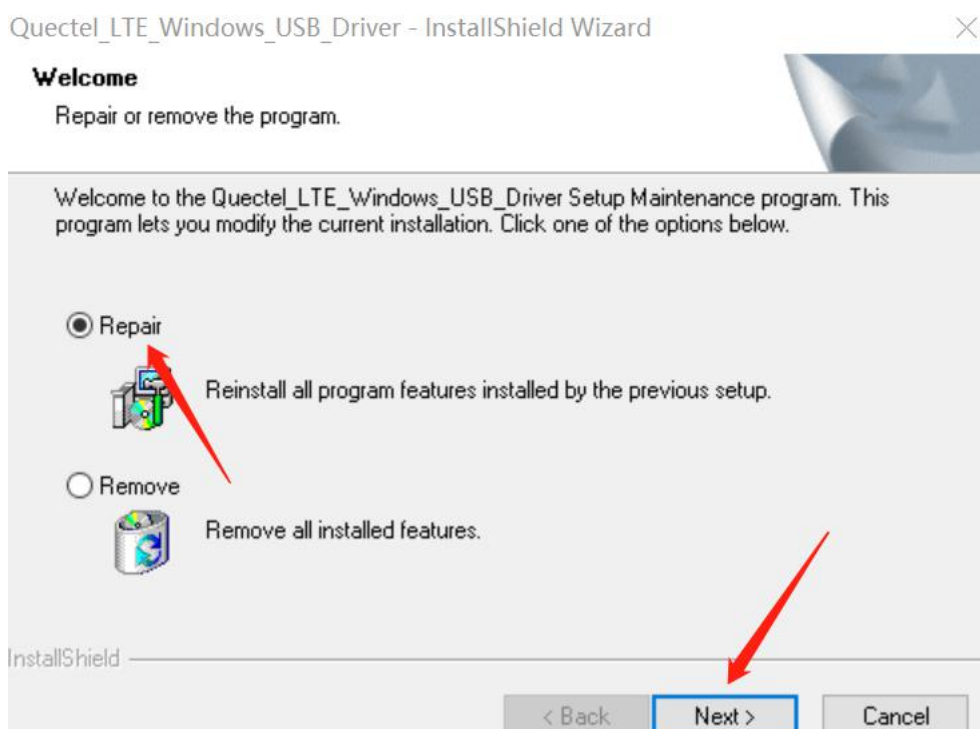
Extraction Code : y5k1

5.1.2 After downloading, unzip and install the driver. The steps are as follows:

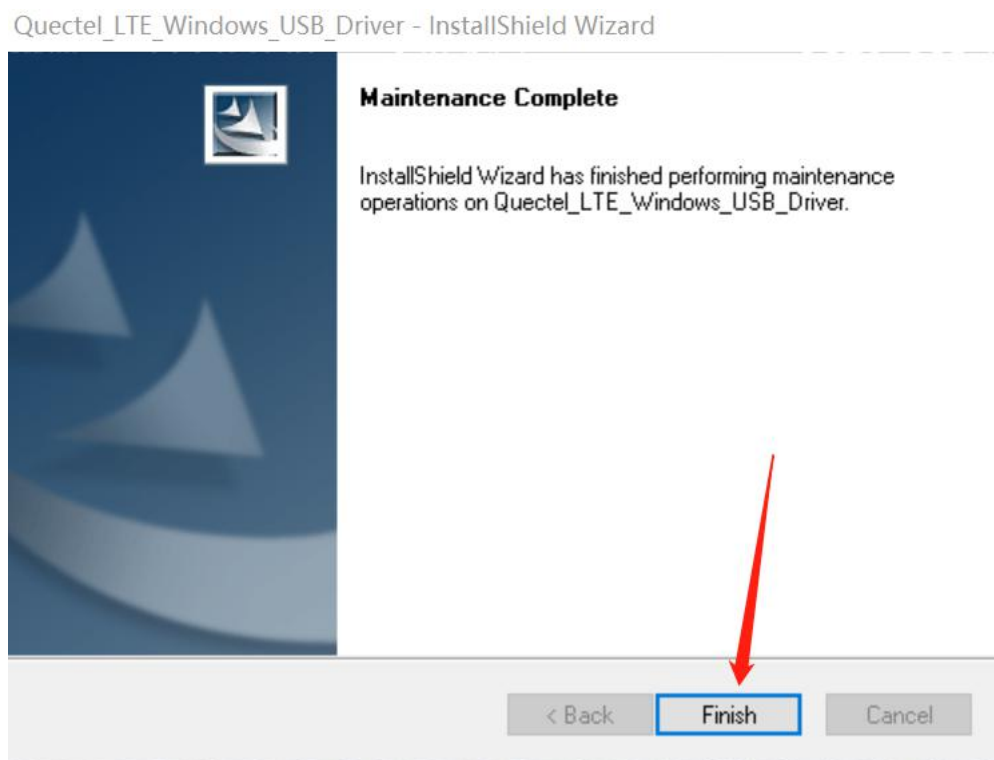
新加卷 (D:) > 新建文件夹			
名称	修改日期	类型	大小
Quectel_LTE_Windows_USB_Driver_V2.1.1	2018/12/10 15:41	文件夹	

Installation of drive steps:

名称	修改日期	类型	大小
setup.exe	2018/12/10 15:30	应用程序	12,819 KB

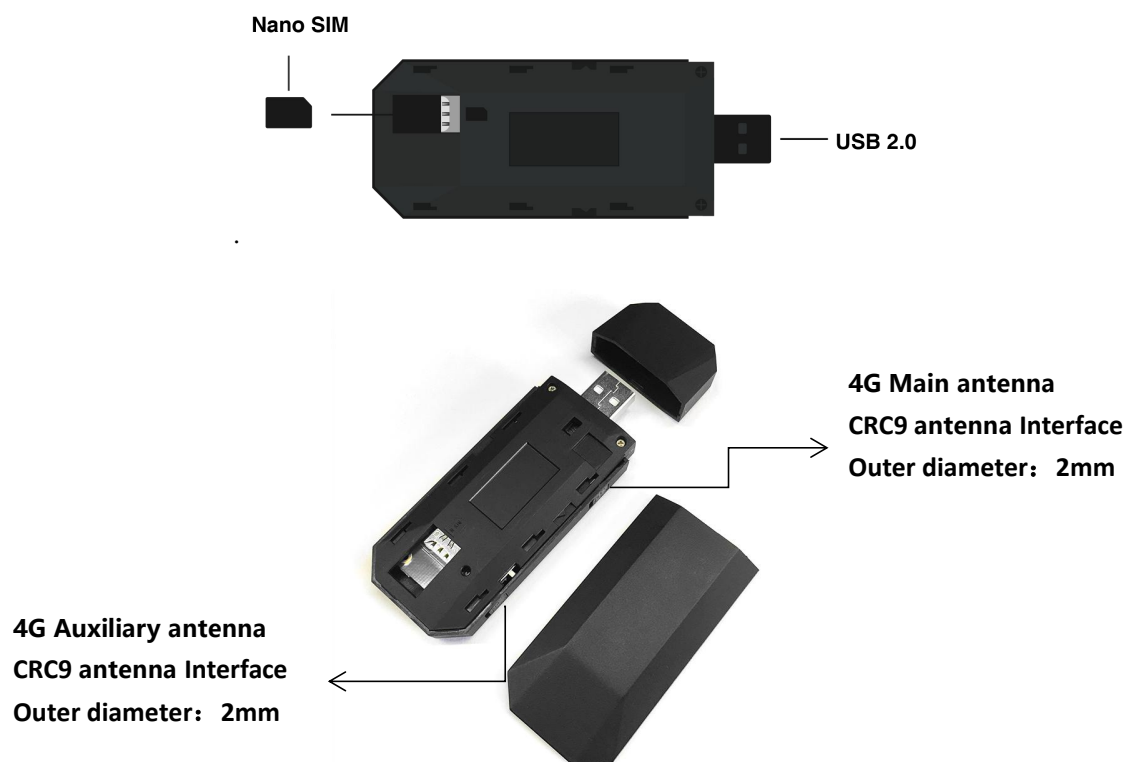






Click "finish" to finish the installation.

5.2 Connect the SIM card and antenna after the installation of the driver is completed



5.3 Then plug dongle into the USB port of Windows 7 / 8 / 10 computer. It takes a few seconds for the device to start after dongle is inserted, Then, the light will flash (Network searching). If the light is always on, the network injection is successful. If "mobile network" appears, it means successful networking.



If you have any other platform information, please contact our company.

Contain FCC ID: 2AWAF-GT25G

This device complies with part 15 of the FCC Rules. Operation is subject to the following two conditions: (1) This device may not cause harmful interference, and (2) this device must accept any interference received, including interference that may cause undesired operation.

FCC Statement

This equipment has been tested and found to comply with the limits for a Class B digital device, pursuant to part 15 of the FCC Rules. These limits are designed to provide reasonable protection against harmful interference in a residential installation. This equipment generates, uses and can radiate radio frequency energy and, if not installed and used in accordance with the instructions, may cause harmful interference to radio communications. However, there is no guarantee that interference will not occur in a particular installation. If this equipment does cause harmful interference to radio or television reception, which can be determined by turning the equipment off and on, the user is encouraged to try to correct the interference by one or more of the following measures:

- Reorient or relocate the receiving antenna.
- Increase the separation between the equipment and receiver.
- Connect the equipment into an outlet on a circuit different from that to which the receiver is connected.
- Consult the dealer or an experienced radio/ TV technician for help.

Any changes or modifications not expressly approved by the party responsible for compliance could void the user's authority to operate the equipment.

The exposure standard for wireless transmitter employs a unit of measurement known as the Specific Absorption Rate, or SAR. The SAR limit set by the FCC is 1.6W/kg.

The highest SAR value for the EUT as reported to the FCC when used next to body, as described in this user guide, is 1.17 W/kg.