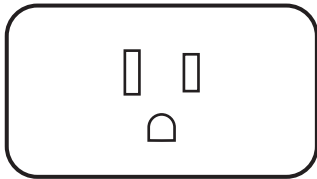


Linkind

Wi-Fi Smart Plug Operation Manual

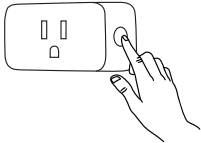


Function Introduction



Installation Instructions

1. Power on the plug.
2. The plug indicator will display green and orange scrolling blinking, and the device will enter the state of configurable network.
3. Then refer to the Aidot APP instructions to add devices.
4. If you need to restore factory settings, you can press and hold the button (>5s) until the red light is on, release the button, The device enters the initial network configuration state again.



- 1 -

LED Indicator

Under normal working state:
LED indicator is solid green—turn on;
LED indicator is off—turn off.

Status	Behavior
Green and Orange scrolling blinking	To be configured status
Quick Blinking Orange	Connecting to the network
Solid Green	Connected to the network
Solid Red	The smart plug is turned on
Off	Connected failed
	The smart plug is turned off
	The smart plug is not configured

- 2 -

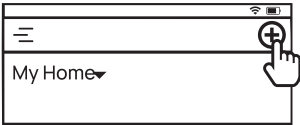
Quick Start Guide

1. Scan the QR code below, or search for "AiDot" in App Store or Google Play.



Google, Google Home and Google Play are trademarks of Google LLC.

2. Create an account and sign in. Tap '+' to add the " smart plug ".



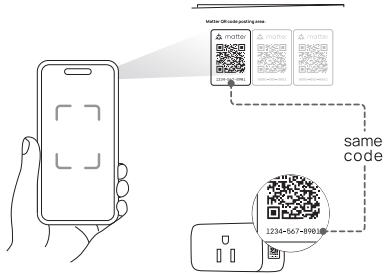
3. Follow the instructions on the App.
(Note: Please turn on Bluetooth and location.)
For more information about the usage guidelines and FAQs, please scan the QR code below or visit the website: <https://www.aidot.com/s/000ff1f>



- 3 -

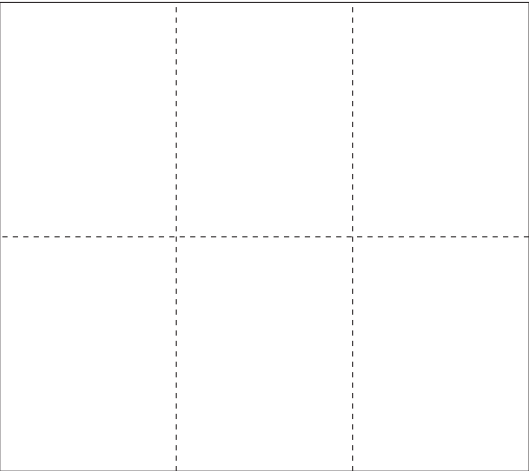
How to connect your device to other apps that support the Matter protocol, such as Alexa, Apple home, Google home, Smartthings?

1. Please use APP scanning function to scan the QR code or manually input the Pairing code below the QR code.
2. Note that the matter QR code on the scanning sticker must be the same as that on the device to be connected to the Internet. As shown in the diagram below.
3. For more information on how to add devices to apps that support Matter protocol, please refer to the apps guide of each manufacturer.



- 4 -

Matter QR code posting area:



- 5 -

Warning

1. This device complies with part 15 of the FCC Rules. Operation is subject to the following two conditions:
(1) this device may not cause harmful interference, and
(2) this device must accept any interference received, including interference that may cause undesired operation.
Any changes or modifications not expressly approved by the party responsible for compliance could void the user's authority to operate the equipment.
NOTE: This equipment has been tested and found to comply with the limits for a Class B digital device, pursuant to Part 15 of the FCC Rules. These limits are designed to provide reasonable protection against harmful interference in a residential installation. This equipment generates, uses and can radiate radio frequency energy and, if not installed and used in accordance with the instructions, may cause harmful interference to radio communications.
However, there is no guarantee that interference will not occur in a particular installation. If this equipment does cause harmful interference to radio or television reception, which can be determined by turning the equipment off and on, the user is encouraged to try to correct the interference by one or more of the following measures:
-- Reorient or relocate the receiving antenna.
-- Increase the separation between the equipment and receiver.
-- Connect the equipment into an outlet on a circuit different from that to which the receiver is connected.
-- Consult the dealer or an experienced radio/TV technician for help.

To maintain compliance with FCC's RF Exposure guidelines, This equipment should be installed and operated with minimum 20cm distance between the radiator and your body. Use only the supplied antenna.

- 6 -

Cautions

- To avoid personal injury and/or possible product damage, the following cautions must be followed:
1. The smart plug is for indoor use only, keep it away from moisture when in use.
 2. Pull the plug before clean the product. Please do not use any liquid, spray cleaner or wet cloth on it.
 3. To prevent early failure, smart plug should only be installed in operating temperature ranging between: 0°C and +40°C (32°F and 104°F).
 4. Put the smart plug in proper condition and keep it out of reach of children.
 5. The total power of the appliances electrically connected could not be bigger than the maximum one of the smart plug.
 6. Do not disassemble or reinstall the smart plug, otherwise it may cause security risks.

Contact Us

SPRING SUNSHINE TECHNOLOGY CO., LIMITED
FLAT/RM 01-04, 24/F, FU FAI COMMERCIAL
CENTRE, 27 HILLIER STREET, SHEUNG WAN, HK
1 (877) 770-5727
<http://www.linkind.com>
Email: service@linkind.com
Made in China
Manufacturer: Leedarson IoT Technology Inc.
Address: No.1511, 2nd Fanghu North Rd, Huli
District, Xiamen, China

- 7 -