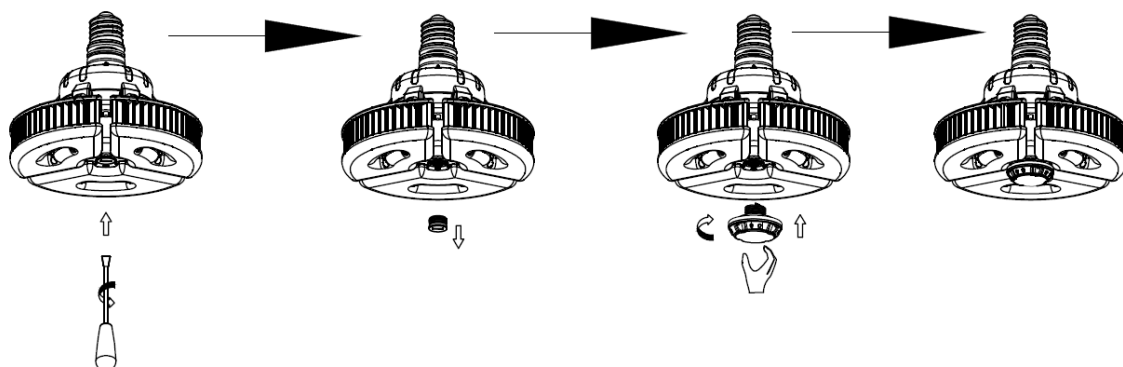


# LED Screw-base High Bay Lamp

## 1. Installation



It could be easily installed using a straight screwdriver. Use a flat-blade screwdriver to unscrew the plug and remove the plug. And then, choose motion sensor to install and tighten.

Note: the motion sensor has no dialing code, and a remote control is needed for adjustment. Please refer to the instruction for remote control adjustment.

## 2. Function

Adopted dual PD technology, HB01DMS-A/B is able to differentiate artificial light brightness from natural light after installed inside the fixture, and automatically turn off light when ambient brightness exceeds preset lux level

Light automatically on when ambient brightness is lower than preset lux level.

Within sufficient ambient brightness, light dims to 100% when motion detected. Light dims to stand-by level if no motion detected after hold time.

Light off when ambient lux level is higher than preset lux amount.

## 3. Warning

DISCONNECT POWER AT SERVICE ENTRANCE BEFORE CLEANING OR SERVICING. ADD GRILLE CURRENT TO FAN CURRENT FOR TOTAL CURRENT DRAW. INSTALL ONLY WITH MODELS INDICATED IN THE INSTALLATION INSTRUCTIONS.

COUPEZ L'ALIMENTATION AU PANNEAU ÉLECTRIQUE AVANT LES TRAVAUX DE NETTOYAGE OU D'ENTRETIEN. ADDITIONNEZ LA CONSOMMATION DE COURANT DE LA GRILLE À CELLE DU VENTILATEUR POUR OBTENIR L'APPEL TOTAL DE COURANT. S'INSTALLE UNIQUEMENT AVEC LES MODÈLES INDIQUÉS DANS LES DIRECTIVES D'INSTALLATION.

## FCCWARNING

Any Changes expressly or modifications not approved by the party responsible for compliance could void the user's authority to operate the equipment.

This device complies with part 15 of the FCC Rules. Operation is subject to the following two conditions:(1) This device may not cause harmful interference,

and (2) this device must accept any interference received, including interference that may cause undesired operation.

FCC Radiation Exposure Statement:

This equipment complies with FCC radiation exposure limits set forth for an uncontrolled environment .

This transmitter must not be co - located or operating in conjunction with any other antenna or transmitter.