



**ELECTROMAGNETIC EMISSIONS COMPLIANCE REPORT
INTENTIONAL RADIATOR CERTIFICATION TO
FCC PART 15 SUBPART C REQUIREMENT**

OF

LED Corn Lamp

**Model: AST-CLW08C-120WXYMA1-aLbcK,
AST-CLW08C-080WXYMA1-aLbcK, AST-CLW08C-100WXYMA1-aLbcK**
(X=LED manufacturer, can be any letter.Y=diffuser types: “F” for frosted type and “C” for clear
type.a=the lamp base type, the “a” represent the lamp base type, can be “E” for E39, “EX” for
EX39, BLANK for E26.b=the Top cover material, can be “P” or “M”, “P” for plastic
material.c=CAXX, XXcan be two digital.)

Trade Mark: N/A

FCC ID: 2AW5A-CLW08C

Report No.: EA2009162F02001

Issue Date: Sept. 25, 2020

Prepared for

ASMART LIGHT CO., LTD

506 N GARFIELD AVE SUITE#210 ALHAMBRA, CA United States.

Prepared by

Dong Guan Anci Electronic Technology Co., Ltd.

**1-2 Floor, Building A, No.11, Headquarters 2 Road, Songshan, Lake Hi-tech
Industrial Development Zone, Dongguan City, Guangdong Pr., China.**

**This report shall not be reproduced, except in full, without the written approval of
Dong Guan Anci Electronic Technology Co., Ltd.**

**VERIFICATION OF COMPLIANCE**

Applicant:	ASMART LIGHT CO., LTD 506 N GARFIELD AVE SUITE#210 ALHAMBRA, CA United States.
Manufacturer:	ASMART LIGHT CO., LTD 506 N GARFIELD AVE SUITE#210 ALHAMBRA, CA United States.
Product Description:	LED Corn Lamp
Trade Mark:	N/A
Model Number:	AST-CLW08C-120WXYMA1-aLbcK, AST-CLW08C-080WXYMA1-aLbcK, AST-CLW08C-100WXYMA1-aLbcK (X=LED manufacturer, can be any letter.Y=diffuser types: "F" for frosted type and "C" for clear type.a=the lamp base type, the "a" represent the lamp base type, can be "E" for E39, "EX" for EX39, BLANK for E26.b=the Top cover material, can be "P" or "M", "P" for plastic material.c=CAXX, XXcan be two digital.) (Note:The three series models have the same circuit principle, power drive and induction controller. The difference is that the number of lamp beads leads to different power. We choose the maximum power model: AST-CLW08C-120WBCMA1-EXLPcK to do all the tests.)

We hereby certify that:

The above equipment was tested by Dong Guan Anci Electronic Technology Co., Ltd.The test data, data evaluation, test procedures, and equipment configurations shown in this report were made in accordance with the procedures given in ANSI C63.10-2013 and the energy emitted by the sample EUT tested as described in this report is in compliance with conducted and radiated emission limits of FCC Rules Part 15.249(2019).

Date of Test : Sept. 15, 2020 to Sept. 25, 2020

Prepared by : Tomas Yang/Supervisor

Reviewer & Approved : Alan He/Manager



Report No.: EA2009162F02001

3 of 42

Modified Information

Version	Summary	Revision Date	Report No.
Ver.1.0	Original Report	/	EA2009162F02001

Table of Contents

1. GENERAL INFORMATION.....	5
1.1 PRODUCT DESCRIPTION.....	5
1.2 TEST FACILITY.....	6
2. TEST CONFIGURATION.....	7
3. SUMMARY OF TEST RESULTS.....	8
4. DESCRIPTION OF TEST MODES.....	9
5. TEST SYSTEM UNCERTAINTY.....	10
6. CONDUCTED EMISSIONS TEST.....	11
6.1 MEASUREMENT PROCEDURE:.....	11
6.2 TEST SET-UP (BLOCK DIAGRAM OF CONFIGURATION).....	11
6.3 MEASUREMENT EQUIPMENT USED:.....	11
6.4 CONDUCTED EMISSION LIMIT.....	11
6.5 MEASUREMENT RESULT:.....	12
6.5 CONDUCTED MEASUREMENT PHOTOS:.....	14
7. 20DB BANDWIDTH TEST.....	15
7.1 MEASUREMENT PROCEDURE.....	15
7.2 TEST SET-UP (BLOCK DIAGRAM OF CONFIGURATION).....	15
7.3 MEASUREMENT EQUIPMENT USED:.....	15
7.4 MEASUREMENT RESULTS:.....	15
8. BAND EDGE TEST.....	17
8.1 MEASUREMENT PROCEDURE.....	17
8.2 TEST SET-UP (BLOCK DIAGRAM OF CONFIGURATION).....	18
8.3 MEASUREMENT EQUIPMENT USED:.....	18
8.4 MEASUREMENT RESULTS:.....	18
9. RADIATED EMISSION TEST.....	23
9.1 MEASUREMENT PROCEDURE.....	23
9.2 TEST SET-UP (BLOCK DIAGRAM OF CONFIGURATION).....	25
9.3 MEASUREMENT EQUIPMENT USED:.....	26
9.4 LIMIT:.....	27
9.5 MEASUREMENT RESULT.....	28
9.6 RADIATED MEASUREMENT PHOTOS:.....	32
10. ANTENNA REQUIREMENT.....	33
10.1 LIMIT.....	33
10.2 RESULT.....	33
Appendix I (Photos of EUT) (4 pages)	

1. General Information

1.1 Product Description

Characteristics	Description
Product Name	LED Corn Lamp
Model number	AST-CLW08C-120WBCMA1-EXLPcK
Input rating	AC 120-277V, 50/60Hz 120W
Test Power Supply	AC 120V/60Hz
Modulation	FMCW
Operating Frequency	5823MHz
Antenna Type	Internal PCB antenna
Antenna Gain	-0.61dBi

1.2 Test Facility

Site Description

EMC Lab. : Accredited by CNAS, 2017.06.26
The certificate is valid until 2022.10.28
The Laboratory has been assessed and proved to be in compliance with CNAS-CL01:2006 (identical to ISO/IEC 17025:2005)
The Certificate Registration Number is L6214.

Accredited by A2LA, 2018.03.15
The Certificate Number is 4422.01.

Name of Firm : Dong Guan Anci Electronic Technology Co., Ltd.

Site Location : 1-2 Floor, Building A, No.11, Headquarters 2 Road, Songshan, Lake Hi-tech Industrial Development Zone, Dongguan City, Guangdong Pr., China.

2. Test Configuration

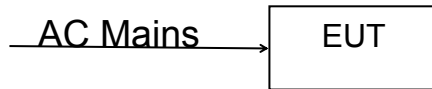


Table 2-1 Equipment Used in Tested System

Item	Equipment	Trade Mark	Model No.	FCC ID	Note
1.	LED Corn Lamp	N/A	AST-CLW08C-120W BCMA1-EXLPcK	2AW5A-CLW08C	<i>EUT</i>

Note:

- (1) Unless otherwise denoted as EUT in 『Remark』 column , device(s) used in tested system is a support equipment.

3. Summary of Test Results

FCC Rules	Description Of Test	Result
§15.207	AC Power Conducted Emission	Complies
§2.1049/15.215c	20dB Bandwidth	Complies
§15.249/15.205	Band Edge	Complies
§15.249(a)	Field Strength of Fundamental Emissions	Complies
§15.249(a)(d)	Radiated Spurious Emissions	Complies
§15.203	Antenna Requirements	Complies

4. Description of test modes

The EUT has been tested under its typical operating condition and fully-charged battery for EUT tested alone. Pre-defined engineering program for regulatory testing used to control the EUT for staying in continuous transmitting. Only the worst case data were reported.

The EUT has been associated with peripherals pursuant to ANSI C63.10-2013 and configuration operated in a manner tended to maximize its emission characteristics in a typical application. Frequency range investigated: radiation (9 KHz to the 10th harmonics of the highest fundamental frequency or to 40 GHz, whichever is lower).

5. TEST SYSTEM UNCERTAINTY

The following measurement uncertainty levels have been estimated for tests performed on the apparatus:

Parameter	Uncertainty
Radio Frequency	$\pm 1 \times 10^{-5}$
Maximum Peak Output Power Test	$\pm 1.0\text{dB}$
Conducted Emissions Test	$\pm 2.0\text{dB}$
Radiated Emission Test	$\pm 2.0\text{dB}$
Power Density	$\pm 2.0\text{dB}$
Occupied Bandwidth Test	$\pm 1.0\text{dB}$
Band Edge Test	$\pm 3\text{dB}$
All emission, radiated	$\pm 3\text{dB}$
Antenna Port Emission	$\pm 3\text{dB}$
Temperature	$\pm 0.5^{\circ}\text{C}$
Humidity	$\pm 3\%$

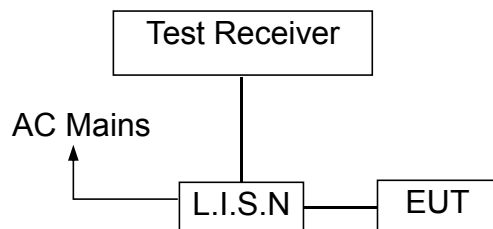
Remark: The coverage Factor ($k=2$), and measurement Uncertainty for a level of Confidence of 95%.

6. Conducted Emissions Test

6.1 Measurement Procedure:

1. The EUT was placed on a table, which is 0.8m above ground plane.
2. Maximum procedure was performed on the six highest emissions to ensure EUT compliance.
3. Repeat above procedures until all frequency measured was complete.

6.2 Test SET-UP (Block Diagram of Configuration)



6.3 Measurement Equipment Used:

Conducted Emission Test Site				
EQUIPMENT TYPE	MFR	MODEL NUMBER	SERIAL NUMBER	Calibrated until
L.I.S.N	SCHWARZBECK	NSLK 8127	8127-669	2021-05-18
10 db attenuator	JFW	50FP-010-H4	4360846-427-1	2021-05-18
RF Cable	N/A	N/A	2#	2021-05-18
EMI Test Receiver	ROHDE&SCHWARZ	ESCI	101358	2021-05-18
Shielded Room	chengyu	8m*4m*3m	N/A	2021-05-18
Test Software	Farad	EZ-EMC Ver:ANCI-8A1	N/A	N/A

6.4 Conducted Emission Limit

(7) Conducted Emission Frequency(MHz)

0.15-0.5
0.5-5.0
5.0-30.0

Quasi-peak

66-56
56
60

Average

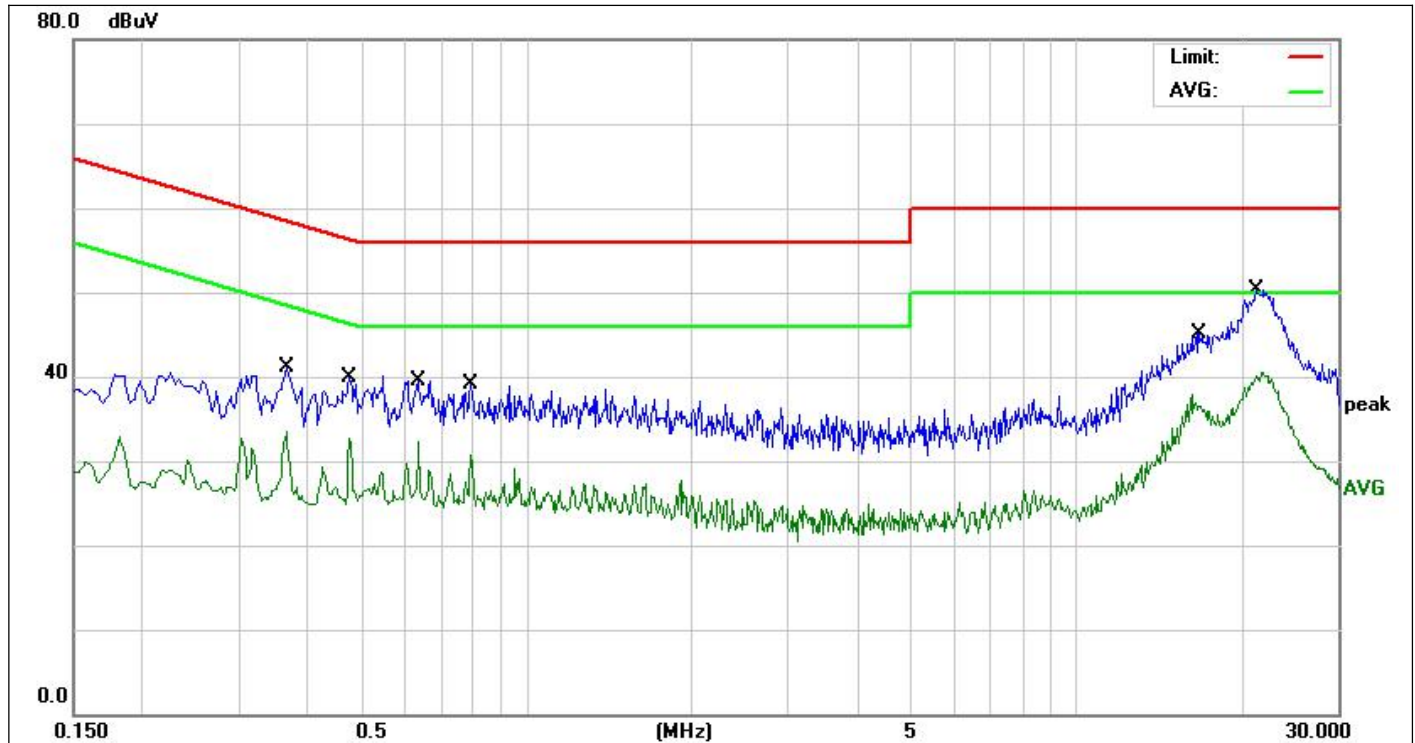
56-46
46
50

Note:

1. The lower limit shall apply at the transition frequencies
2. The limit decreases in line with the logarithm of the frequency in the range of 0.15 to 0.50MHz.

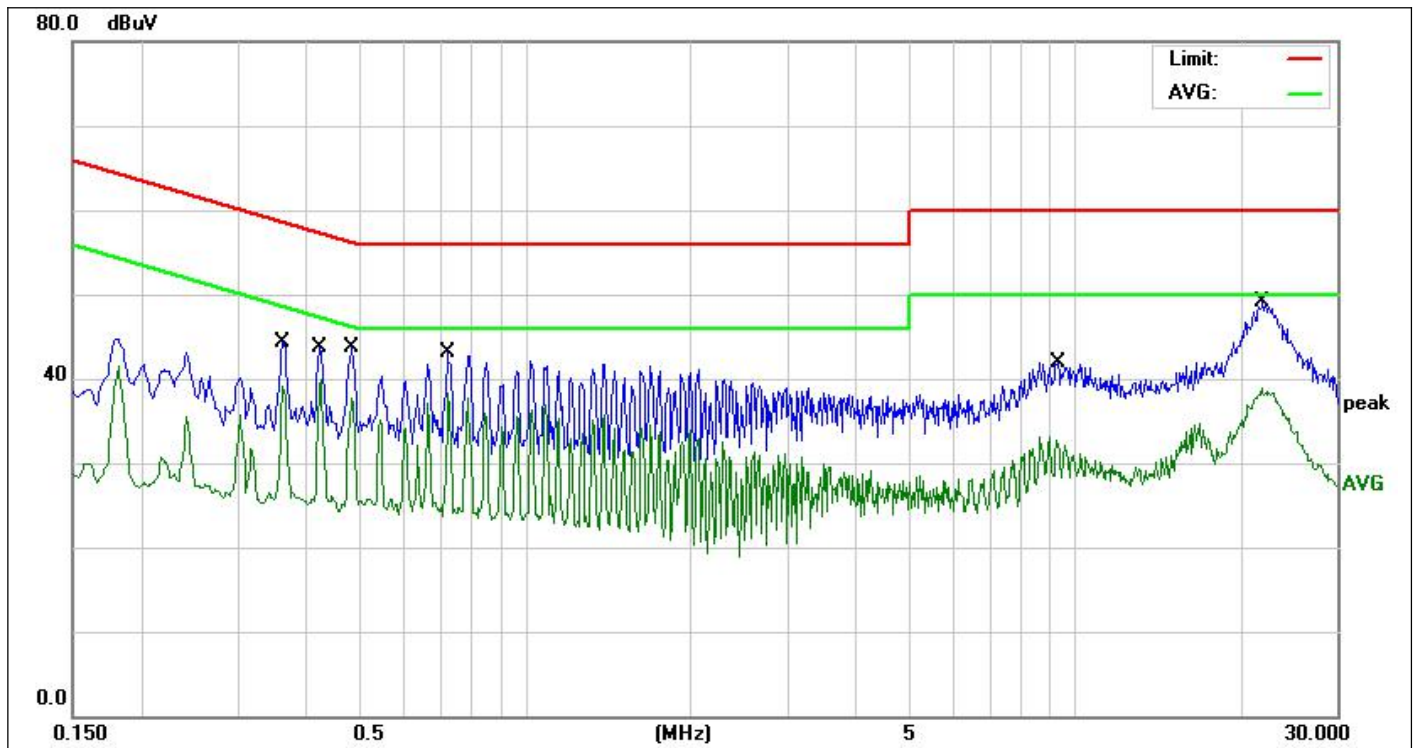
6.5 Measurement Result:

All the modulation modes were tested the data of the worst mode are recorded in the following pages and the others modulation methods do not exceed the limits. Please refer to following pages.



Site:	843	Phase:L1	Temperature(C):26(C)
Limit:	FCC PART 15C Conduction(QP)		Humidity(%):60%
EUT:	LED Corn Lamp	Test Time:	2020-09-16
M/N.:	AST-CLW08C-120WBCMA1-EXLPcK	Power Rating:	AC 120V/60Hz
Mode:	TX Mode	Test Engineer:	Sunshine
Note:			

No.	Frequency (MHz)	Reading Level(dBuV)	Factor (dB)	Measurement(dBuV)	Limit (dBuV)	Over (dB)	Detector	Comment
1	0.3660	27.81	9.74	37.55	58.59	-21.04	QP	
2	0.3660	22.63	9.74	32.37	48.59	-16.22	AVG	
3	0.4780	26.10	9.75	35.85	56.37	-20.52	QP	
4	0.4780	22.81	9.75	32.56	46.37	-13.81	AVG	
5	0.6340	25.43	9.78	35.21	56.00	-20.79	QP	
6	0.6340	21.46	9.78	31.24	46.00	-14.76	AVG	
7	0.7940	26.35	9.79	36.14	56.00	-19.86	QP	
8	0.7940	21.41	9.79	31.20	46.00	-14.80	AVG	
9	16.7580	30.57	10.08	40.65	60.00	-19.35	QP	
10	16.7580	24.63	10.08	34.71	50.00	-15.29	AVG	
11	21.3300	34.08	10.20	44.28	60.00	-15.72	QP	
12 *	21.3300	27.82	10.20	38.02	50.00	-11.98	AVG	



Site:	843	Phase:	N	Temperature(C):	26(C)
Limit:	FCC PART 15C Conduction(QP)	Test Time:	2020-09-16	Humidity(%):	60%
EUT:	LED Corn Lamp	Power Rating:	AC 120V/60Hz	Test Engineer:	Sunshine
M/N.:	AST-CLW08C-120WBCMA1-EXLPcK				
Mode:	TX Mode				
Note:					

No.	Frequency (MHz)	Reading Level(dBuV)	Factor (dB)	Measure-ment(dBuV)	Limit (dBuV)	Over (dB)	Detector	Comment
1	0.3620	31.90	9.74	41.64	58.68	-17.04	QP	
2	0.3620	29.79	9.74	39.53	48.68	-9.15	AVG	
3	0.4220	31.60	9.76	41.36	57.41	-16.05	QP	
4 *	0.4220	30.28	9.76	40.04	47.41	-7.37	AVG	
5	0.4860	30.47	9.75	40.22	56.24	-16.02	QP	
6	0.4860	27.71	9.75	37.46	46.24	-8.78	AVG	
7	0.7220	30.26	9.80	40.06	56.00	-15.94	QP	
8	0.7220	26.71	9.80	36.51	46.00	-9.49	AVG	
9	9.3420	27.34	9.94	37.28	60.00	-22.72	QP	
10	9.3420	20.94	9.94	30.88	50.00	-19.12	AVG	
11	21.9700	34.13	10.21	44.34	60.00	-15.66	QP	
12	21.9700	27.12	10.21	37.33	50.00	-12.67	AVG	

*:Maximum data x:Over limit !:over margin

6.5 Conducted Measurement Photos:

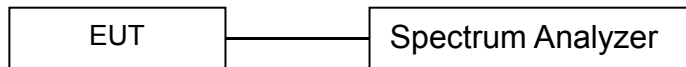


7. 20dB Bandwidth test

7.1 Measurement Procedure

The EUT was operating in hopping mode or could be controlled its channel. Printed out the test result from the spectrum by hard copy function.

7.2 Test SET-UP (Block Diagram of Configuration)



7.3 Measurement Equipment Used:

EQUIPMENT TYPE	MFR	MODEL NUMBER	SERIAL NUMBER	Calibrated until
Spectrum Analyzer	Rohde & Schwarz	FSV40	102257	2020-11-28
RF Cable	Gigalink Microwave	ZT40-2.92J-2.92J-0.3m	RF Cable	2020-11-28
Antenna Connector	ARTHUR-YANG	2244-N1TG1	N/A	N/A

Remark: The temporary antenna connector is soldered on the PCB board in order to perform conducted tests and this temporary antenna connector is listed in the equipment list. The cable loss is 0.4dBm, and impedance is 50 Ω for the antenna connector.

7.4 Measurement Results:

Refer to attached data chart.

Spectrum Detector:	PK	Test Date :	September 23, 2020
Test By:	Best	Temperature :	24°C
Test Result:	PASS	Humidity :	53 %
Modulation:	FSK		

8. Band EDGE test

8.1 Measurement Procedure

The EUT was placed on a styrofoam table which is 1.5m above ground plane.

The measurement procedure at the band edges was simplified by performing the measurement in just one plot. Both, the in-band-emission and the unwanted emission were encompassed by the span. After trace stabilization, the maximum peak was determined by a peak detector and the value was marked by an appropriate limit line. The second limit line, which is 20dB below the first, marks the limit for the emissions in the unrestricted band. A maximum-peak-detector marks the highest emission in the unrestricted band next to the band edge.

The measurements were performed at the lower end of the 2.4GHz band. Use the following spectrum analyzer settings:

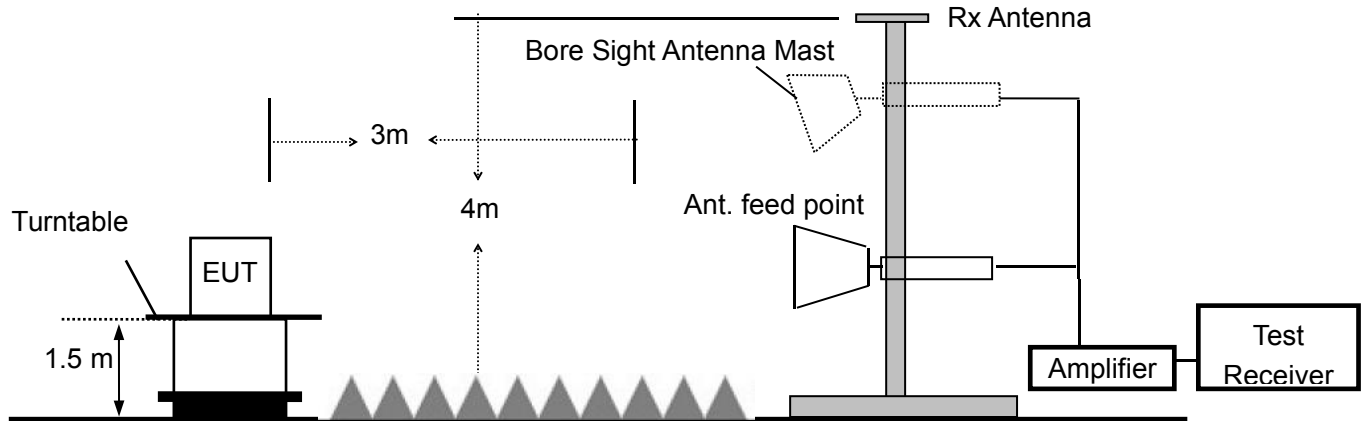
When spectrum scanned above 1GHz setting resolution bandwidth 1MHz, video bandwidth 3MHz:

EMI Test Receiver	Setting
Attenuation	Auto
RB	1MHz
VB	3MHz
Detector	Peak
Trace	Max hold

When spectrum scanned above 1GHz setting resolution bandwidth 1MHz, video bandwidth 10Hz:

EMI Test Receiver	Setting
Attenuation	Auto
RB	1MHz
VB	10Hz
Detector	Peak
Trace	Max hold

8.2 Test SET-UP (Block Diagram of Configuration)

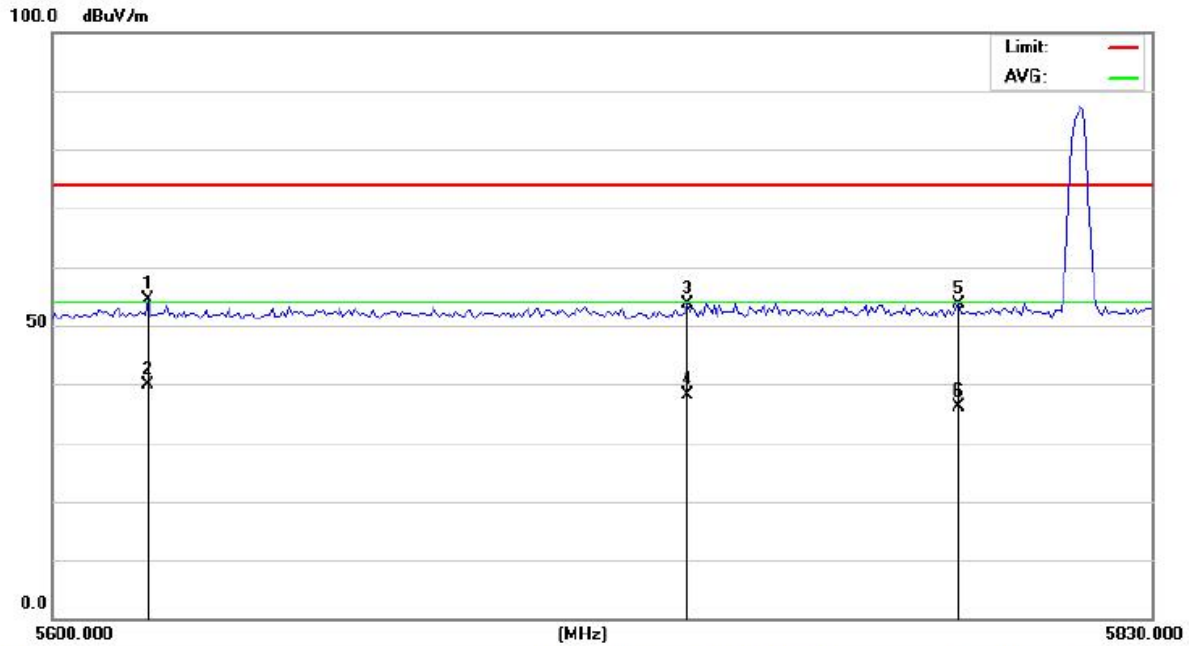


8.3 Measurement Equipment Used:

Item	Equipment	Manufacturer	Model No.	Serial No.	Calibrated until
1	Spectrum Analyzer	Rohde & Schwarz	FSV40	US40240623	2020-11-28
2	Low noise Amplifiers	A-INFO	LA1018N4009	J101313052400 1	2020-11-28
3	Horn antenna	A-INFO	LB-10180-SF	J203109061212 3	2020-11-28
4	RF Cable	Gigalink Microwave	ZT40-2.92J-2.92 J-2m	N/A	2020-11-28
5	RF Cable	Gigalink Microwave	ZT40-2.92J-2.92 J-0.3m	N/A	2020-11-28

8.4 Measurement Results:

Spectrum Detector:	PK	Test Date :	September 23, 2020
Test By:	Best	Temperature :	25 °C
Test Result:	PASS	Humidity :	50 %



Site 843

Polarization: Horizontal

Temperature: 26(C)

Limit: FCC PART 15C 3m

Power: AC 120V/60Hz

Humidity: 60 %

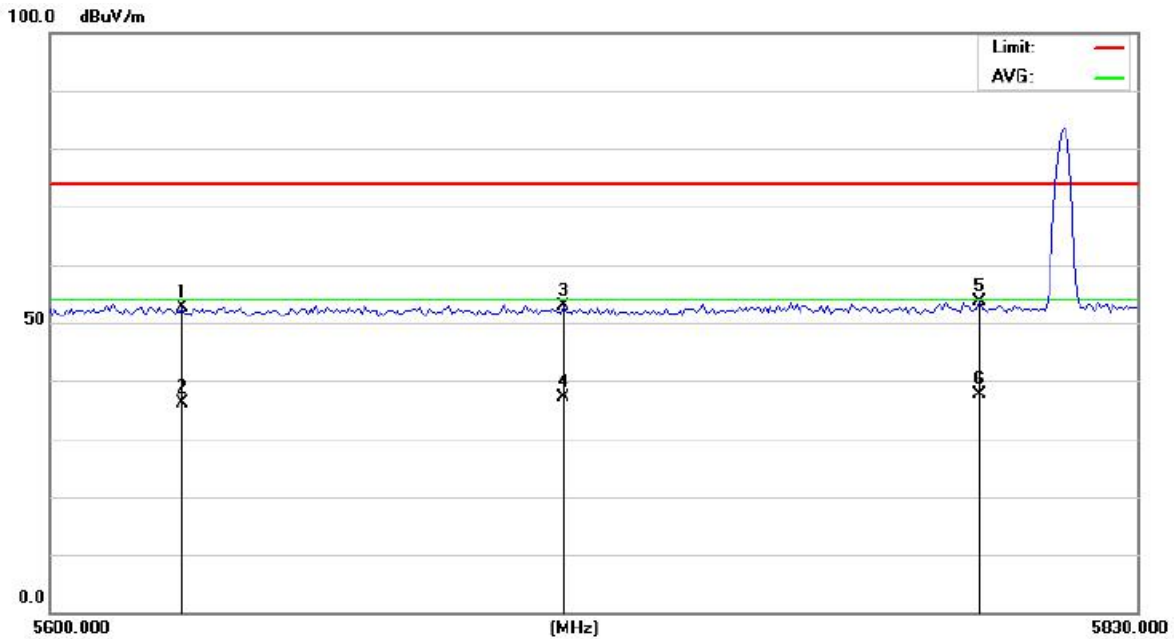
Mode: TX

Note:

No.	Mk.	Freq.	Reading Level	Correct Factor	Measurement	Limit	Over	Antenna Height	Table Degree	
		MHz	dBuV	dB	dBuV/m	dB/m	dB	cm	degree	Comment
1		5619.757	49.05	5.22	54.27	74.00	-19.73	peak		
2	*	5619.757	34.58	5.22	39.80	54.00	-14.20	AVG		
3		5731.694	48.00	5.70	53.70	74.00	-20.30	peak		
4		5731.694	32.47	5.70	38.17	54.00	-15.83	AVG		
5		5789.079	47.61	5.95	53.56	74.00	-20.44	peak		
6		5789.079	30.10	5.95	36.05	54.00	-17.95	AVG		

*:Maximum data x:Over limit !:over margin

〈Reference Only



Site 843

Polarization: **Vertical**

Temperature: 26(C)

Limit: FCC PART 15C 3m

Power: AC 120V/60Hz

Humidity: 60 %

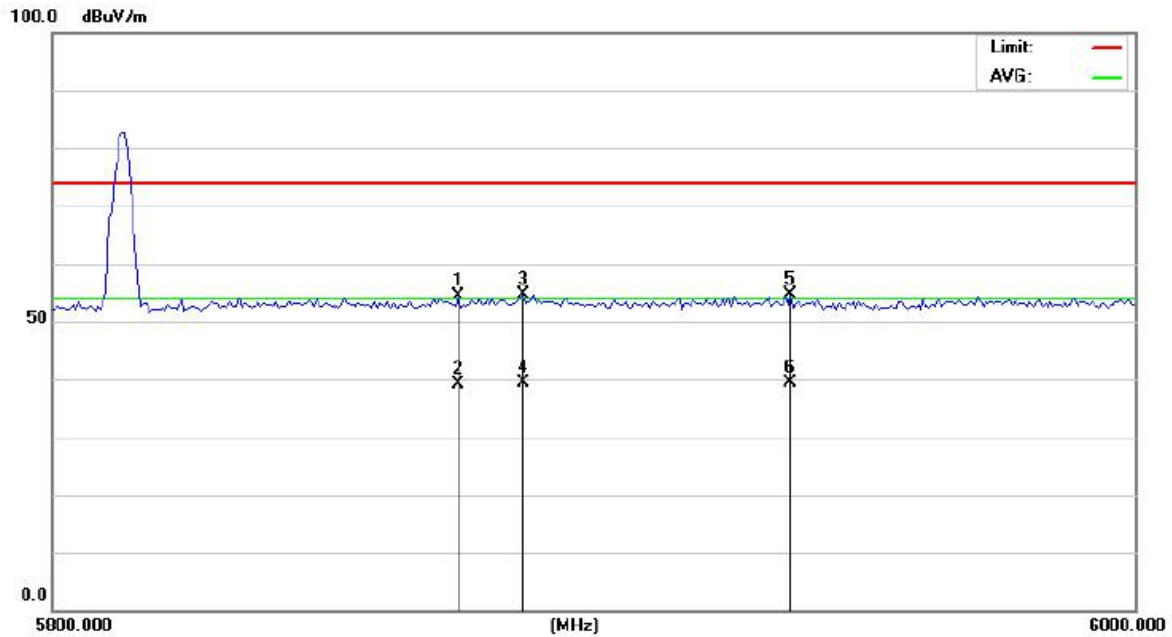
Mode: TX

Note:

No.	Mk.	Freq.	Reading Level	Correct Factor	Measure-ment	Limit	Over	Antenna Height	Table Degree	
		MHz	dBuV	dB	dBuV/m	dB/m	dB	cm	degree	Comment
1		5627.680	47.50	5.24	52.74	74.00	-21.26	peak		
2		5627.680	30.80	5.24	36.04	54.00	-17.96	AVG		
3		5707.522	47.18	5.59	52.77	74.00	-21.23	peak		
4		5707.522	31.58	5.59	37.17	54.00	-16.83	AVG		
5		5796.073	47.68	5.98	53.66	74.00	-20.34	peak		
6	*	5796.073	31.65	5.98	37.63	54.00	-16.37	AVG		

*:Maximum data x:Over limit !:over margin

(Reference Only)



Site 843

Polarization: Vertical

Temperature: 26(C)

Limit: FCC PART 15C 3m

Power: AC 120V/60Hz

Humidity: 60 %

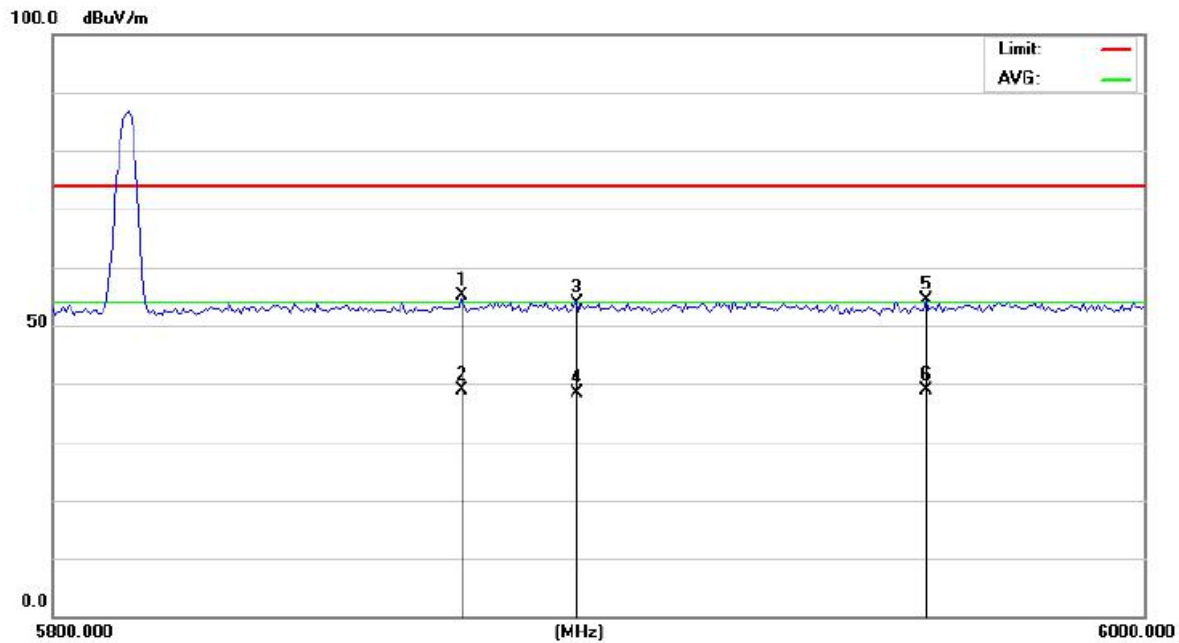
Mode: TX

Note:

No.	Mk.	Freq.	Reading	Correct	Measure-	Limit	Over	Antenna	Table	
		MHz	Level	Factor	ment			Height	Degree	
			dBuV	dB	dBuV/m	dB/m	dB	cm	degree	Comment
1		5874.207	48.03	6.31	54.34	74.00	-19.66	peak		
2		5874.207	32.85	6.31	39.16	54.00	-14.84	AVG		
3		5886.167	48.18	6.37	54.55	74.00	-19.45	peak		
4		5886.167	33.02	6.37	39.39	54.00	-14.61	AVG		
5		5935.764	48.06	6.58	54.64	74.00	-19.36	peak		
6	*	5935.764	32.87	6.58	39.45	54.00	-14.55	AVG		

*:Maximum data x:Over limit !:over margin

⟨Reference Only



Site 843

Polarization: **Horizontal**

Temperature: 26(C)

Limit: FCC PART 15C 3m

Power: AC 120V/60Hz

Humidity: 60 %

Mode: TX

Note:

No.	Mk.	Freq. MHz	Reading Level dBuV	Correct Factor dB	Measure- ment dBuV/m	Limit dB/m	Over dB	Antenna Height cm	Table Degree degree	Comment
1		5874.207	48.82	6.31	55.13	74.00	-18.87	peak		
2		5874.207	32.50	6.31	38.81	54.00	-15.19	AVG		
3		5895.154	47.60	6.40	54.00	74.00	-20.00	peak		
4		5895.154	32.02	6.40	38.42	54.00	-15.58	AVG		
5		5959.456	47.59	6.69	54.28	74.00	-19.72	peak		
6	*	5959.456	32.14	6.69	38.83	54.00	-15.17	AVG		

*:Maximum data x:Over limit !:over margin

(Reference Only)

9. Radiated Emission Test

9.1 Measurement Procedure

1. Below 1000MHz, The EUT was placed on a turn table which is 0.8m above ground plane. And above 1000MHz, The EUT was placed on a styrofoam table which is 1.5m above ground plane.
2. The EUT was set 3 meters from the interference receiving antenna, which was mounted on the top of a variable height antenna tower.
3. For each suspected emission, the EUT was arranged to its worst case and then tune the Antenna tower (From 1m to 4m) and turntable (from 0 degree to 360 degree) to find the maximum reading. A pre-amp and a high pass filter are used for the test in order to get better signal level to comply with the guidelines.
4. Set to the maximum power setting and enable the EUT transmit continuously.
5. Final measurement (Above 1GHz): The frequency range will be divided into different sub ranges depending of the frequency range of the used horn antenna. The EMI Receiver set to peak and average mode and a resolution bandwidth of 1MHz. The measurement will be performed in horizontal and vertical polarization of the measuring antenna and while rotating the EUT in its vertical axis in the range of 0 degree to 360 degree in order to have the antenna inside the cone of radiation.
6. Test Procedure of measurement (For Above 1GHz):
 - 1) Monitor the frequency range at horizontal polarization and move the antenna over all sides of the EUT(if necessary move the EUT to another orthogonal axis).
 - 2) Change the antenna polarization and repeat 1) with vertical polarization.
 - 3) Make a hardcopy of the spectrum.
 - 4) Measure the frequency of the detected emissions with a lower span and resolution bandwidth to increase the accuracy and note the frequency value.
 - 5) Change the analyser mode to Clear/ Write and found the cone of emission.
 - 6) Rotate and move the EUT, so that the measuring distance can be enlarged to 3m and the antenna will be still inside the cone of emission.
 - 7) Measure the level of the detected frequency with the correct resolution bandwidth, with the antenna polarization and azimuth and the peak and average detector, which causes the maximum emission.
 - 8) Repeat steps 1) to 7) for the next antenna spot if the EUT is larger than the antenna beamwidth.

The following table is the setting of spectrum analyzer:

When spectrum scanned from 30MHz to 1GHz setting resolution bandwidth 120KHz and video bandwidth 300KHz:

EMI Test Receiver	Setting
Attenuation	Auto
RB	120KHz
VB	300KHz
Detector	QP
Trace	Max hold

For harmonics emission .When spectrum scanned above 1GHz setting resolution bandwidth 1MHz, video bandwidth 3MHz:

EMI Test Receiver	Setting
Attenuation	Auto
RB	1MHz
VB	3MHz
Detector	Peak
Trace	Max hold

For fundamental emission .When spectrum scanned above 1GHz setting resolution bandwidth 3MHz, video bandwidth 10MHz:

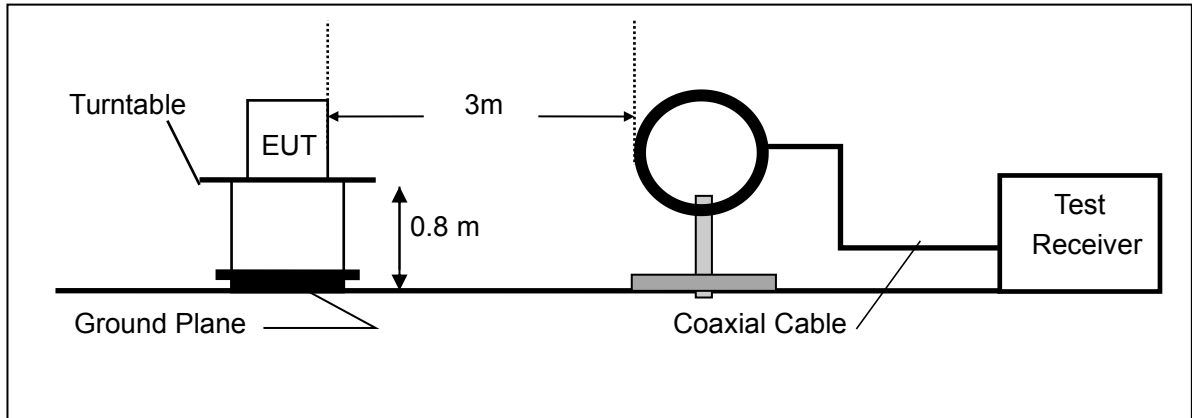
EMI Test Receiver	Setting
Attenuation	Auto
RB	3MHz
VB	10MHz
Detector	Peak
Trace	Max hold

When spectrum scanned above 1GHz setting resolution bandwidth 1MHz, video bandwidth 10Hz:

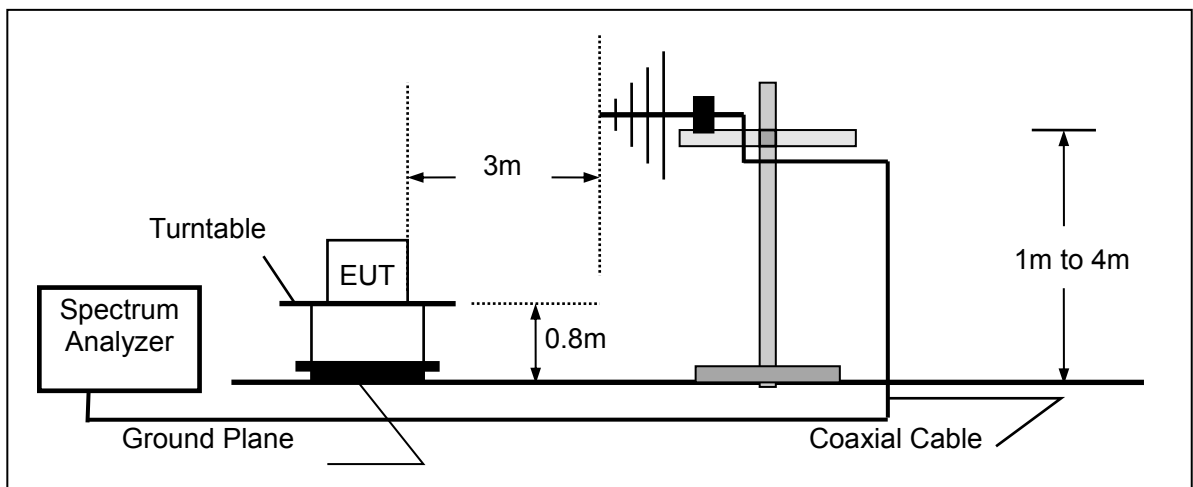
EMI Test Receiver	Setting
Attenuation	Auto
RB	1MHz
VB	10Hz
Detector	Peak
Trace	Max hold

9.2 Test SET-UP (Block Diagram of Configuration)

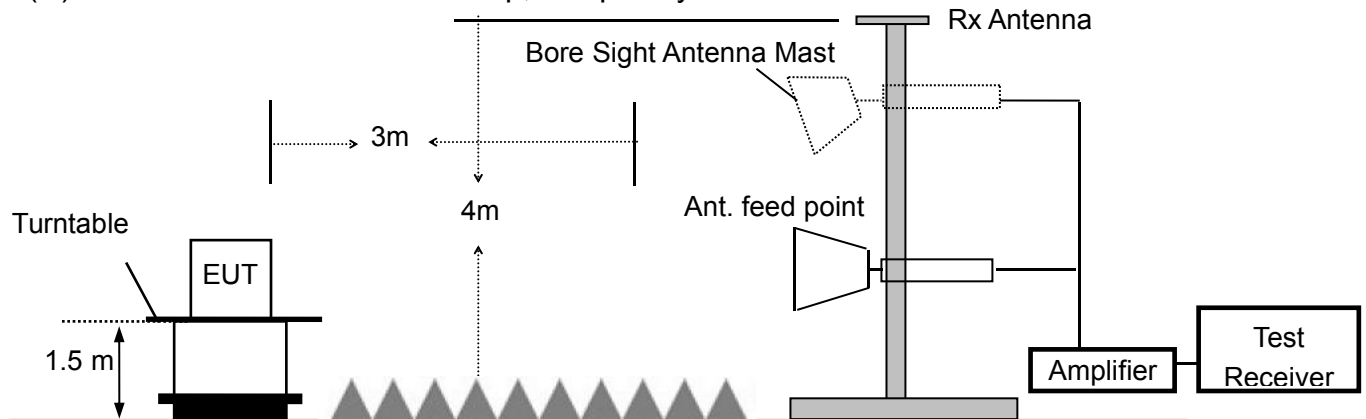
(A) Radiated Emission Test Set-Up, Frequency Below 30MHz



(B) Radiated Emission Test Set-Up, Frequency Below 1000MHz



(C) Radiated Emission Test Set-Up, Frequency above 1000MHz



9.3 Measurement Equipment Used:

Item	Equipment	Manufacturer	Model No.	Serial No.	Calibrated until
1.	EMI Test Receiver	Rohde & Schwarz	ESPI	100502	2020-11-28
2.	Pre-Amplifier	HP	8447D	2727A06172	2021-05-18
3.	Bilog Antenna	Schwarzbeck	VULB9163	VULB9163-588	2021-05-18
4.	Loop Antenna	Schwarzbeck	FMZB 1516	1516-141	2020-11-28
5.	Spectrum Analyzer	Rohde & Schwarz	FSV40	US40240623	2020-11-28
6.	Low noise Amplifiers	A-INFO	LA1018N40 09	J101313052400 1	2021-05-18
7.	Horn antenna	A-INFO	LB-10180-S F	J203109061212 3	2021-05-18
8.	Broadband RF Power Amplifier	AEROFLEX	AEROFLEX 100KHz-40 GHz	J101313052400 1	2020-11-28
9.	DRG Horn Antenna	A.H.SYSTEMS	SAS-574	J203109061212 3	2020-11-28
10.	RF Cable	Gigalink Microwave	ZT40-2.92J- 2.92J-2m	N/A	2020-11-28
11.	RF Cable	Gigalink Microwave	ZT40-2.92J- 2.92J-0.3m	N/A	2020-11-28
12.	RF Cable	N/A	N/A	6#	2021-05-18
13.	RF Cable	N/A	N/A	1-1#	2021-05-18
14.	RF Cable	N/A	N/A	1-2#	2021-05-18
15.	RF Cable	N/A	N/A	7#	2021-05-18
16.	3m Semi-anechoic Chamber	chengyu	9m*6m*6m	N/A	2021-05-18
17.	Test Software	Farad	EZ-EMC Ver:ANCI-3 A1	N/A	N/A

9.4 Limit:

The emissions from an intentional radiator shall not exceed the field strength levels specified in the following table 15.209(a):

Frequencies (MHz)	Field Strength (micorvolts/meter)	Measurement Distance (meters)
0.009~0.490	2400/F(KHz)	300
0.490~1.705	24000/F(KHz)	30
1.705~30.0	30	30
30~88	100	3
88~216	150	3
216~960	200	3
Above 960	500	3

- Remark: 1. Emission level in dBuV/m= $20 \log (\mu\text{V/m})$
2. Measurement was performed at an antenna to the closed point of EUT distance of meters.

The field strength of emissions from intentional radiators operated within these frequency bands shall comply with the following:

Frequency(MHz)	Filed Strength of Fundamental(at 3m)		Filed Strength of Harmonics(at 3m)	
	PEAK	AVERAGE	PEAK	AVERAGE
902-928	114	94	74.0	54.0
2400-2483.5	114	94	74.0	54.0
5725-5875	114	94	74.0	54.0
24000-24250	128	108	88.0	68.0

9.5 Measurement Result

Below 30MHz:

Operation Mode:	TX	Test Date :	September 23, 2020
Frequency Range:	9KHz~30MHz	Temperature :	28℃
Test Result:	PASS	Humidity :	65 %
Measured Distance:	3m	Test By:	Best

Freq. (MHz)	Ant.Pol. H/V	Emission Level (dBuV/m)	Limit 3m (dBuV/m)	Over (dB)
--	--	--	--	--

Note: the amplitude of spurious emission that is attenuated by more than 20dB below the permissible limit has no need to be reported.

Below 1000MHz:

Pass.

All the modulation modes were tested the worst data of the mode are recorded in the following pages and the others modulation methods do not exceed the limits.

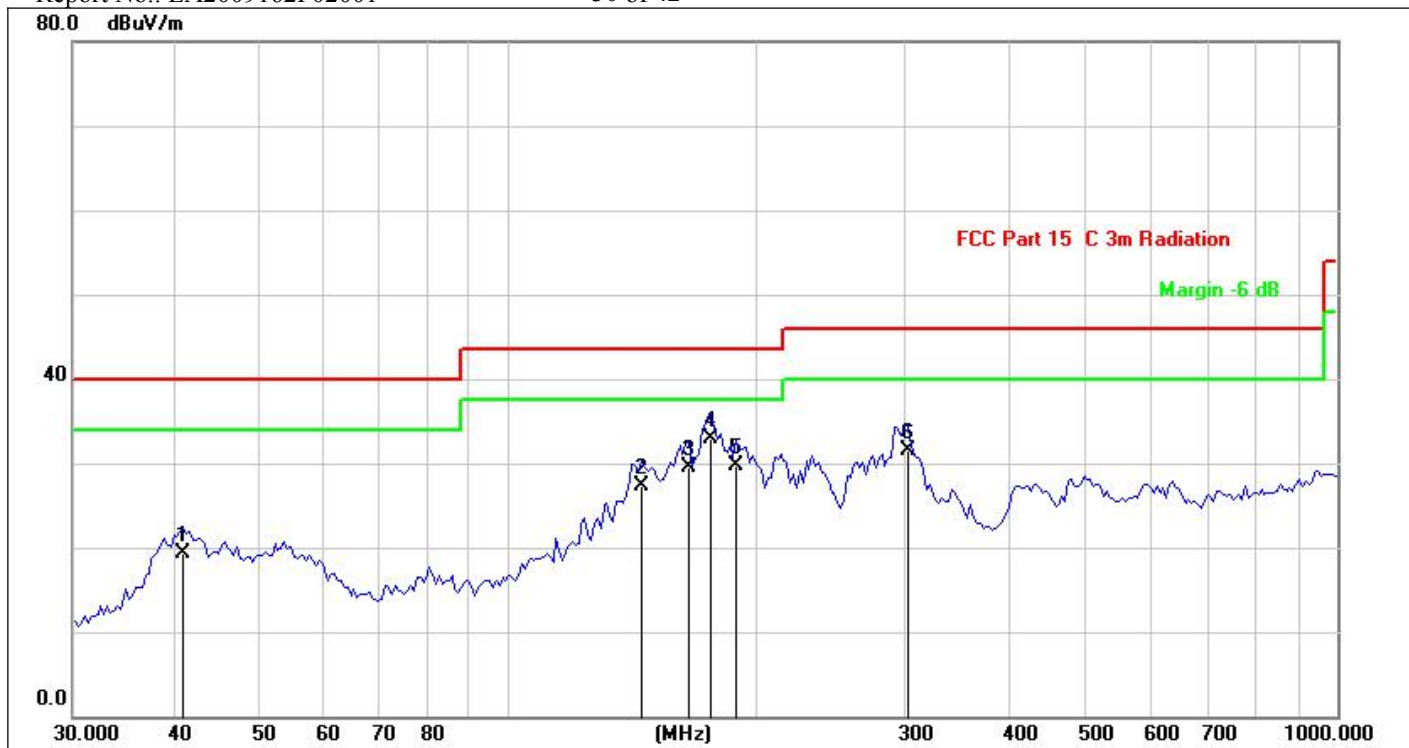
Please refer to the following data.



Site:	LAB	Antenna::Vertical	Temperature(C):26(C)
Limit:	FCC Part 15 C 3m Radiation		Humidity(%):60%
EUT:	LED Corn Lamp	Test Time:	2019/08/22
M/N.:	AST-CLW08C-120WBCMA1-EXLPcK	Power Rating:	AC 120V/60Hz
Mode:	TX Mode	Test Engineer:	Bast
Note:			

No.	Frequency (MHz)	Reading (dBuV)	Factor (dB/m)	Level (dBuV/m)	Limit (dBuV/m)	Margin (dB)	Det.	Height (cm)	Azimuth (deg)	Remark
1	31.3442	43.26	-14.55	28.71	40.00	-11.29	QP			
2 *	54.9310	45.58	-12.73	32.85	40.00	-7.15	QP			
3	74.0053	44.66	-15.69	28.97	40.00	-11.03	QP			
4	136.6993	43.21	-14.33	28.88	43.50	-14.62	QP			
5	180.9658	42.26	-12.13	30.13	43.50	-13.37	QP			
6	303.5437	39.84	-8.44	31.40	46.00	-14.60	QP			

*:Maximum data x:Over limit !:over margin



Site:	LAB	Antenna::Horizontal	Temperature(C):26(C)
Limit:	FCC Part 15 C 3m Radiation		Humidity(%):60%
EUT:	LED Corn Lamp	Test Time:	2019/08/02 14:56:32
M/N.:	AST-CLW08C-120WBCMA1-EXLPcK	Power Rating:	AC 120V/60Hz
Mode:	TX Mode	Test Engineer:	Bast
Note:			

No.	Frequency (MHz)	Reading (dBuV)	Factor (dB/m)	Level (dBuV/m)	Limit (dBuV/m)	Margin (dB)	Det.	Height (cm)	Azimuth (deg)	Remark
1	40.7730	32.21	-12.96	19.25	40.00	-20.75	QP			
2	145.3506	41.76	-14.43	27.33	43.50	-16.17	QP			
3	165.7771	42.59	-13.15	29.44	43.50	-14.06	QP			
4 *	176.2686	45.46	-12.46	33.00	43.50	-10.50	QP			
5	189.0743	41.01	-11.39	29.62	43.50	-13.88	QP			
6	303.5437	40.00	-8.44	31.56	46.00	-14.44	QP			

*:Maximum data x:Over limit !:over margin

Above 1000MHz~10th Harmonics:

Operation Mode: TX Mode

Test Date : September 23, 2020

Freq. (MHz)	Ant. Pol. H/V	Emission Level(dBuV/m)		Limit 3m(dBuV/m)		Margin(dB)	
		PK	AV	PK	AV	PK	AV
5823(F)	V	86.35	75.69	114	94	-27.65	-18.31
11646	V	61.25	42.25	74	54	-12.75	-11.75
17469	V	58.32	40.66	74	54	-15.68	-13.34
23292	V	58.63	40.02	74	54	-15.37	-13.98
29115	V	60.52	43.58	74	54	-13.48	-10.42
34938	V	62.35	42.96	74	54	-11.65	-11.04
5823(F)	H	87.62	76.98	114	94	-26.38	-17.02
11646	H	61.24	42.75	74	54	-12.76	-11.25
17469	H	59.32	40.58	74	54	-14.68	-13.42
23292	H	58.14	39.02	74	54	-15.86	-14.98
29115	H	59.32	41.14	74	54	-14.68	-12.86
34938	H	60.52	42.03	74	54	-13.48	-11.97

Other harmonics emissions are lower than 20dB below the allowable limit.

- Note:**
- (1) All Readings are Peak Value and AV.
 - (2) Emission Level= Reading Level+ Probe Factor +Cable Loss.
 - (3) The average measurement was not performed when the peak measured data under the limit of average detection.
 - (4) Measuring frequencies from 1GHz to 40GHz.

9.6 Radiated Measurement Photos:



10. Antenna requirement

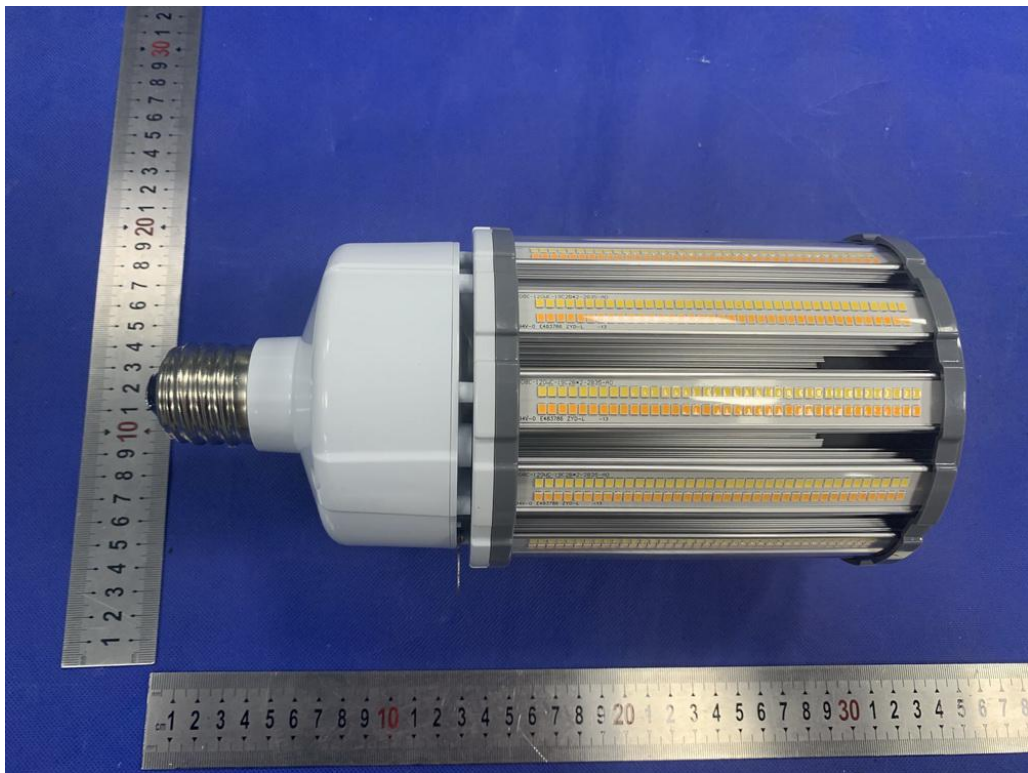
10.1 Limit

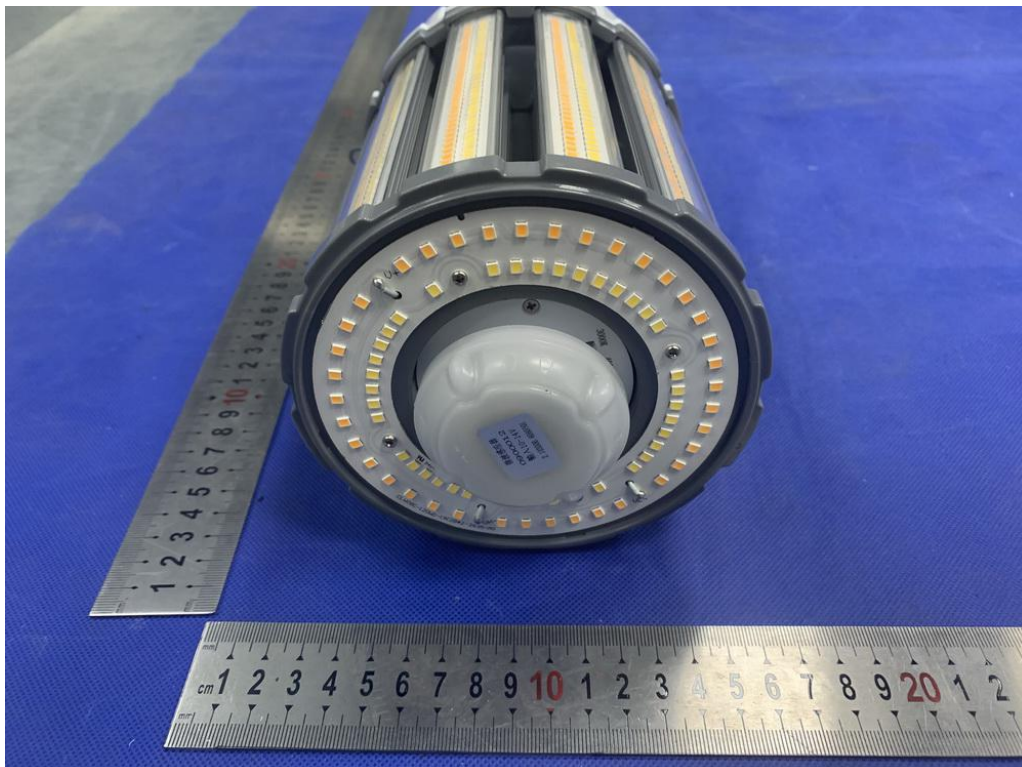
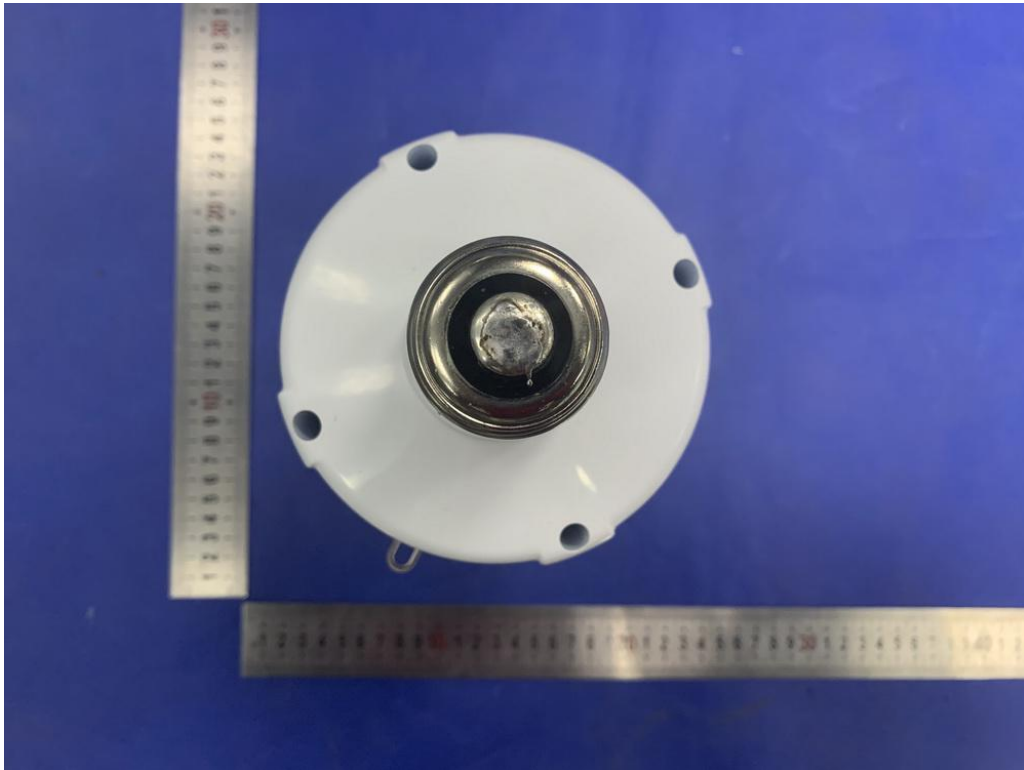
Except for special regulations, the Low-power Radio-Frequency Devices must not be equipped with any jacket for installing an antenna with extension cable. An intentional radiator shall be designed to ensure that no antenna other than that furnished by the responsible party shall be used with the device. The use of a permanently attached antenna or of an antenna that uses a unique coupling to the intentional radiator shall be considered sufficient to comply with the provisions of this section. The manufacture may design the unit so that the user can replace a broken antenna, but the use of a standard antenna jack or electrical connector is prohibited.

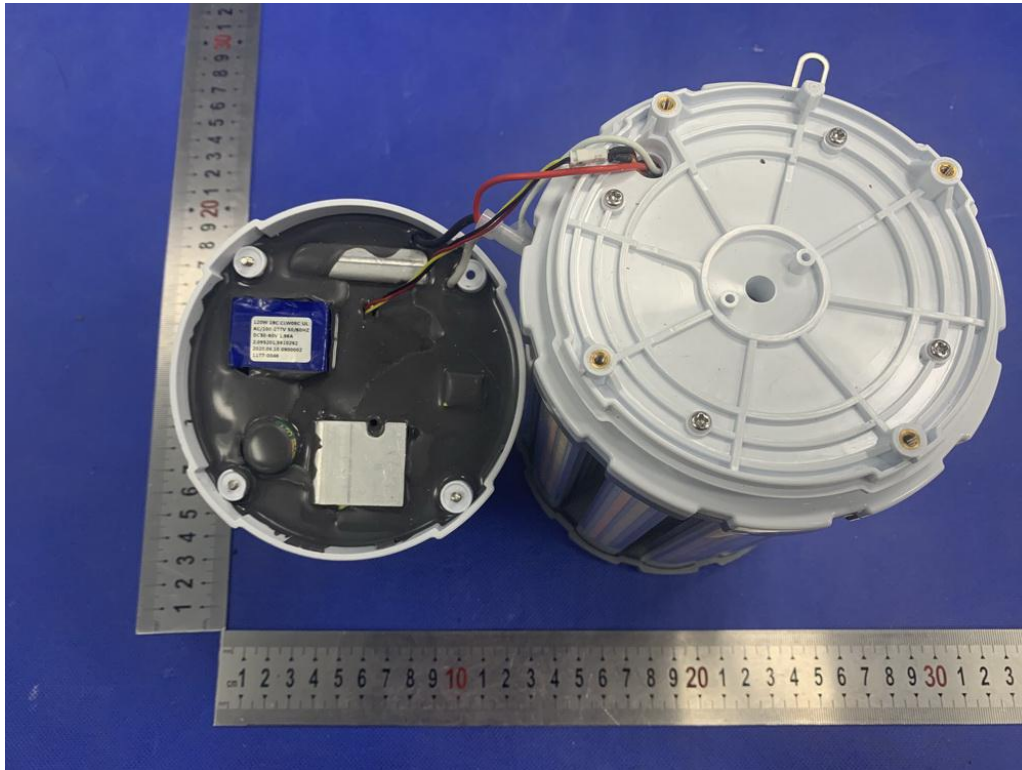
10.2 Result

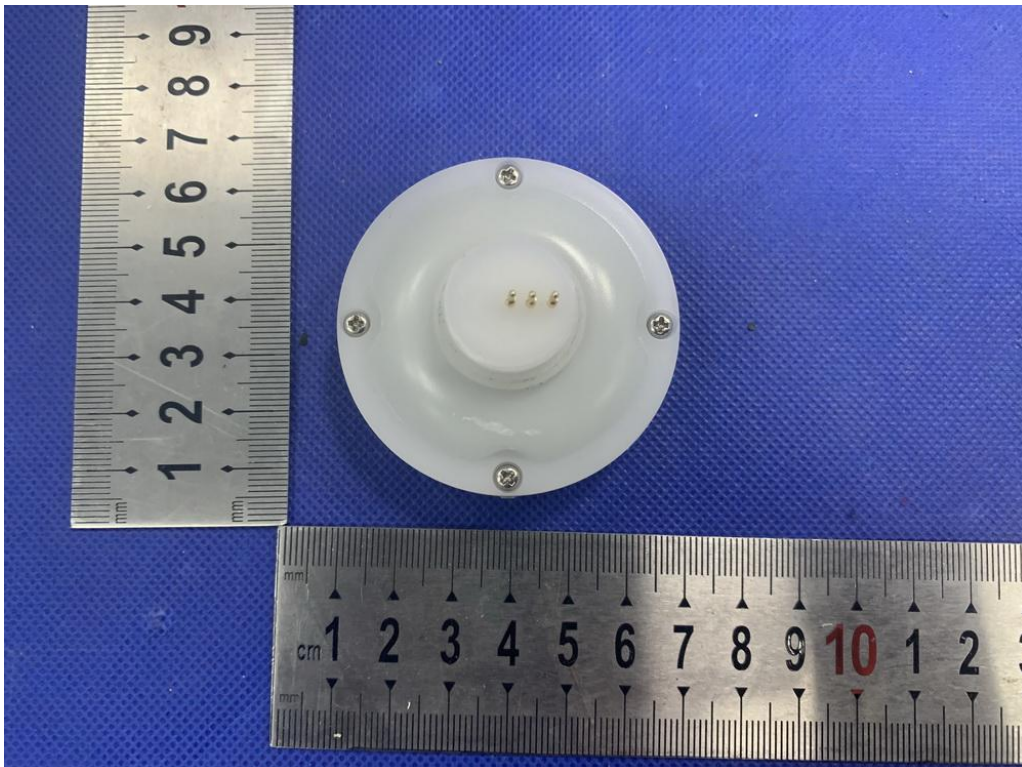
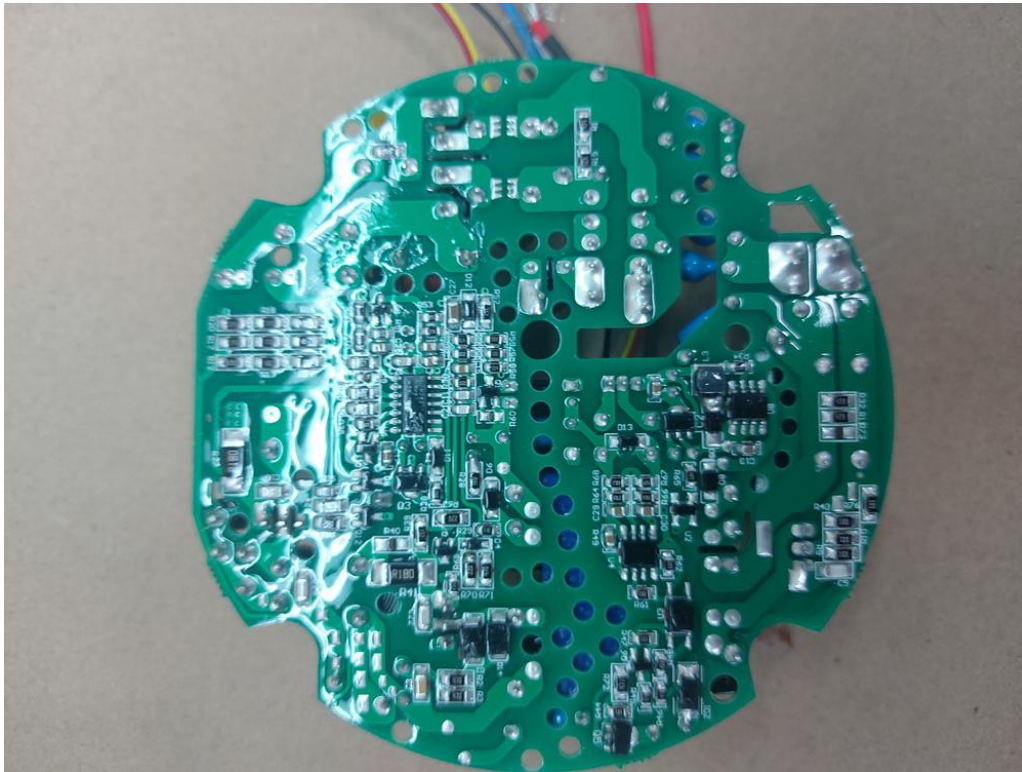
The EUT's antenna, permanent attached antenna, used a PCB antenna and integrated on PCB, The antenna's gain is -0.61dBi and meets the requirement.

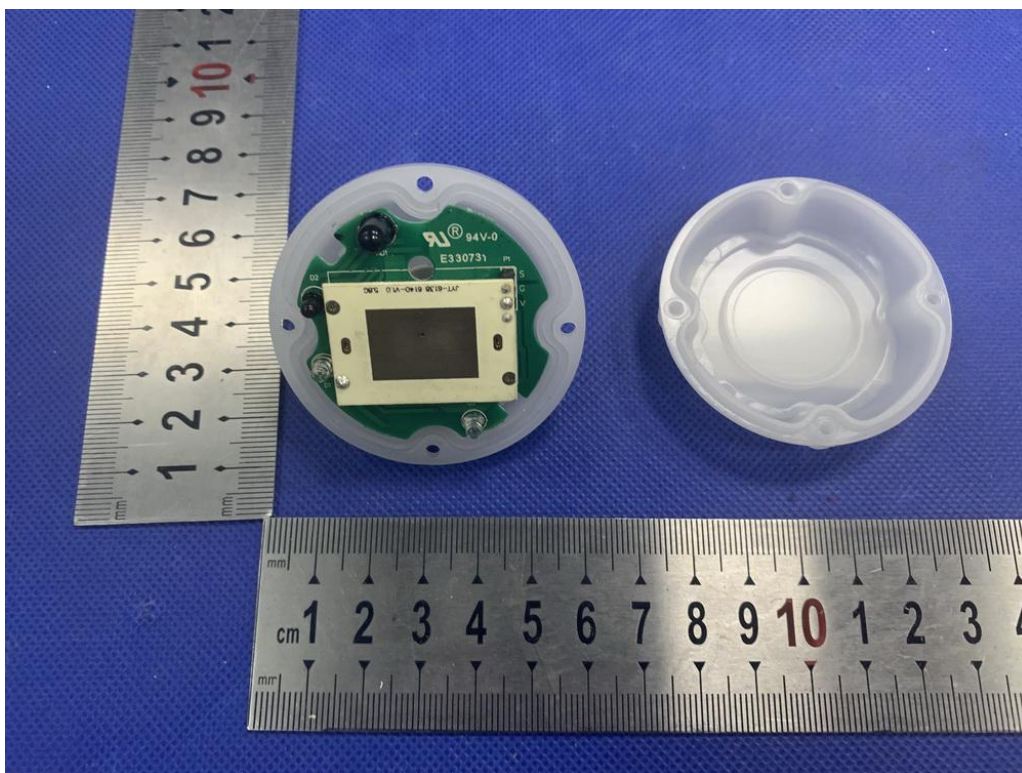
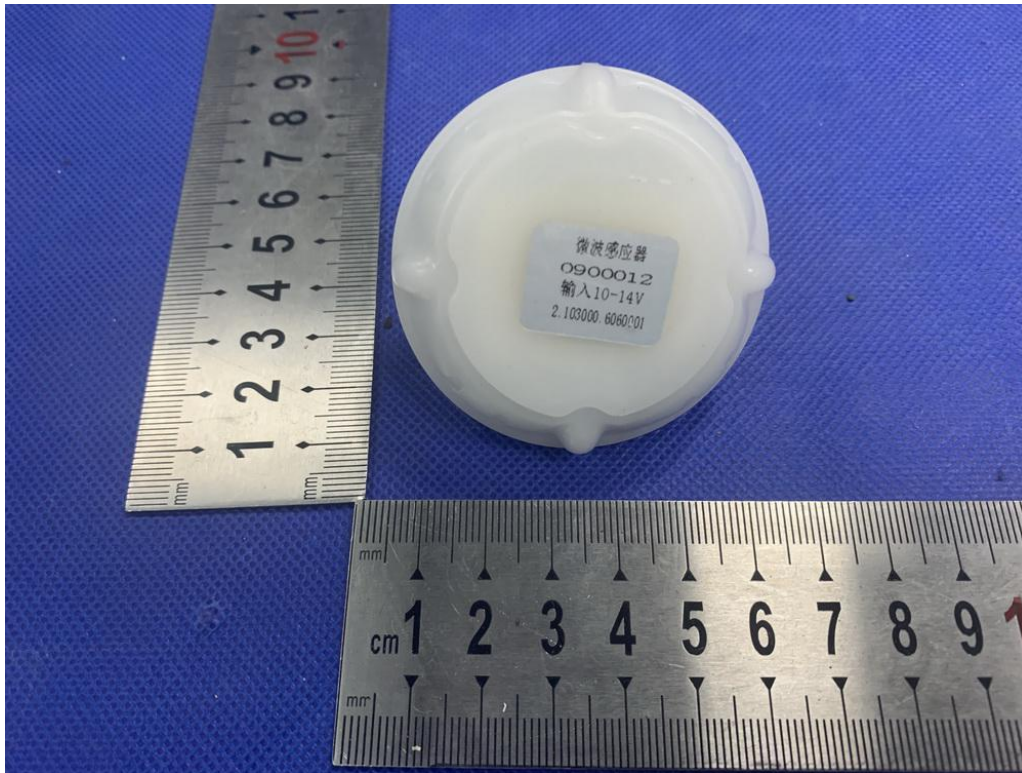
APPENDIX I (Photos of EUT)

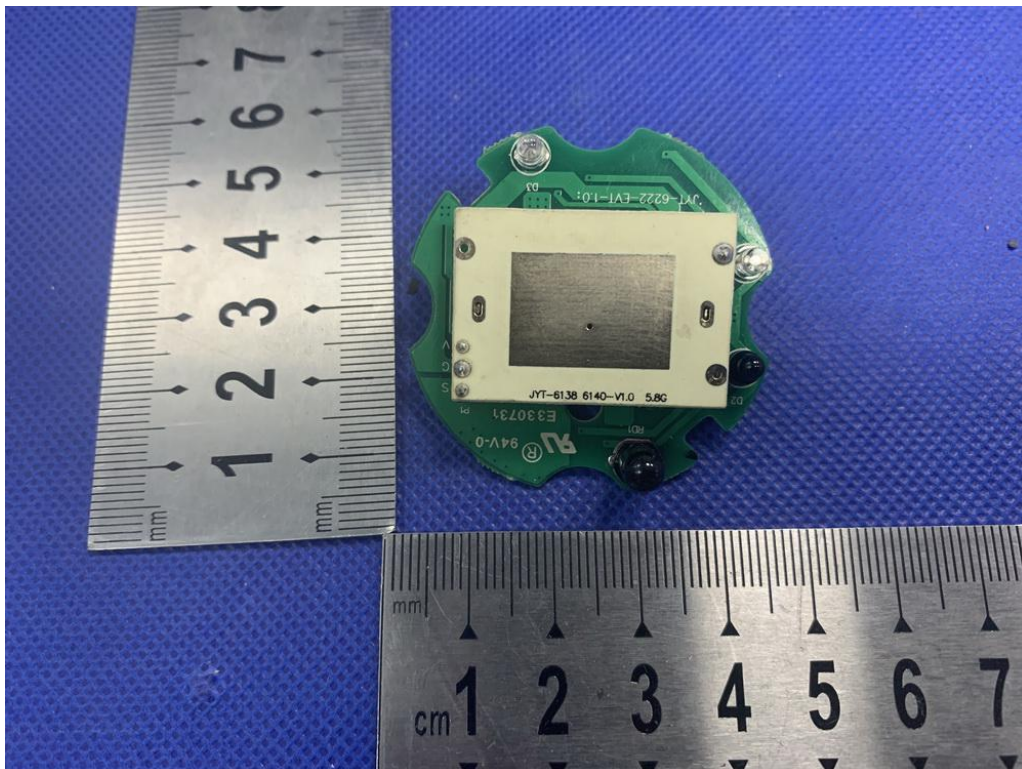
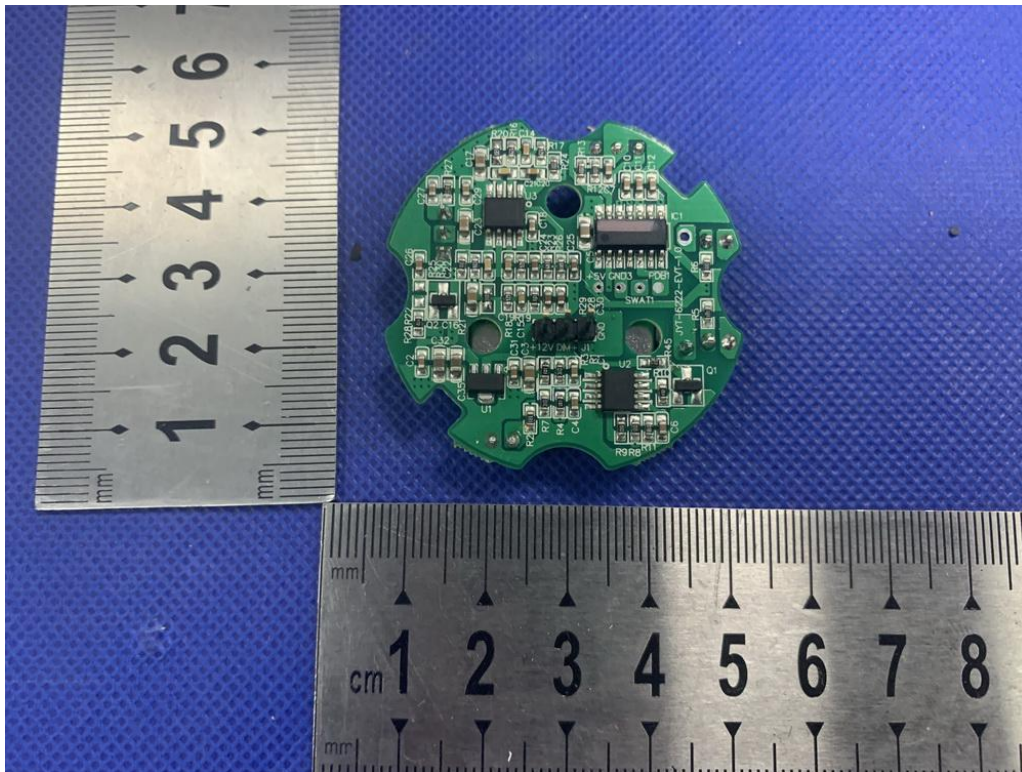


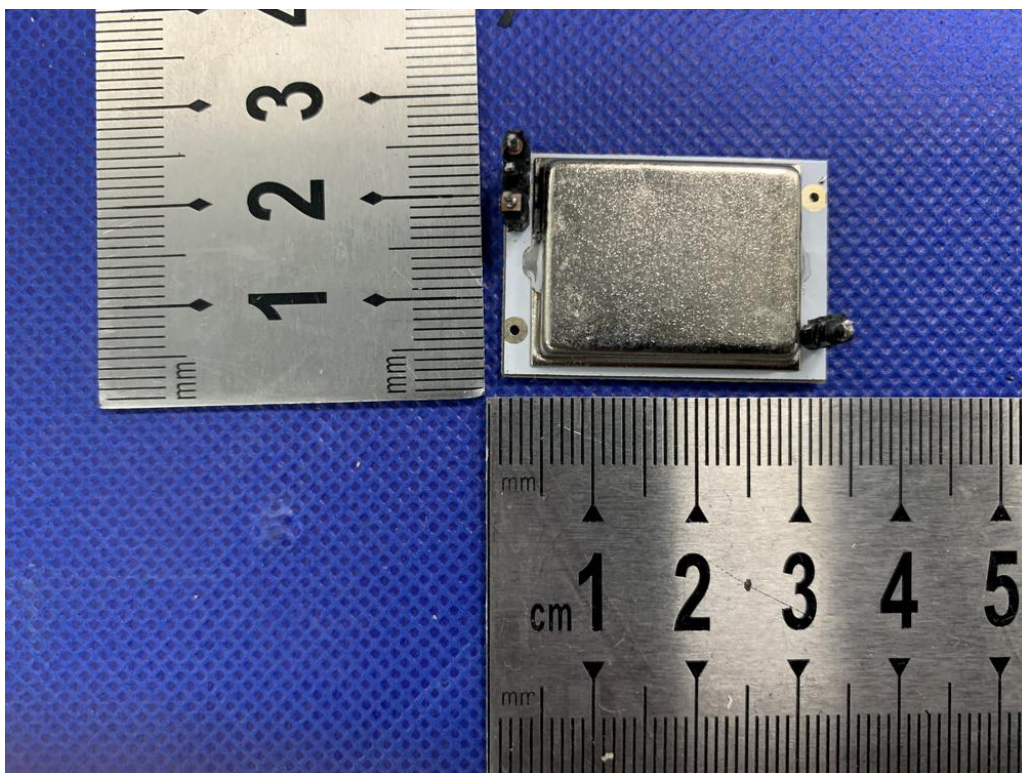
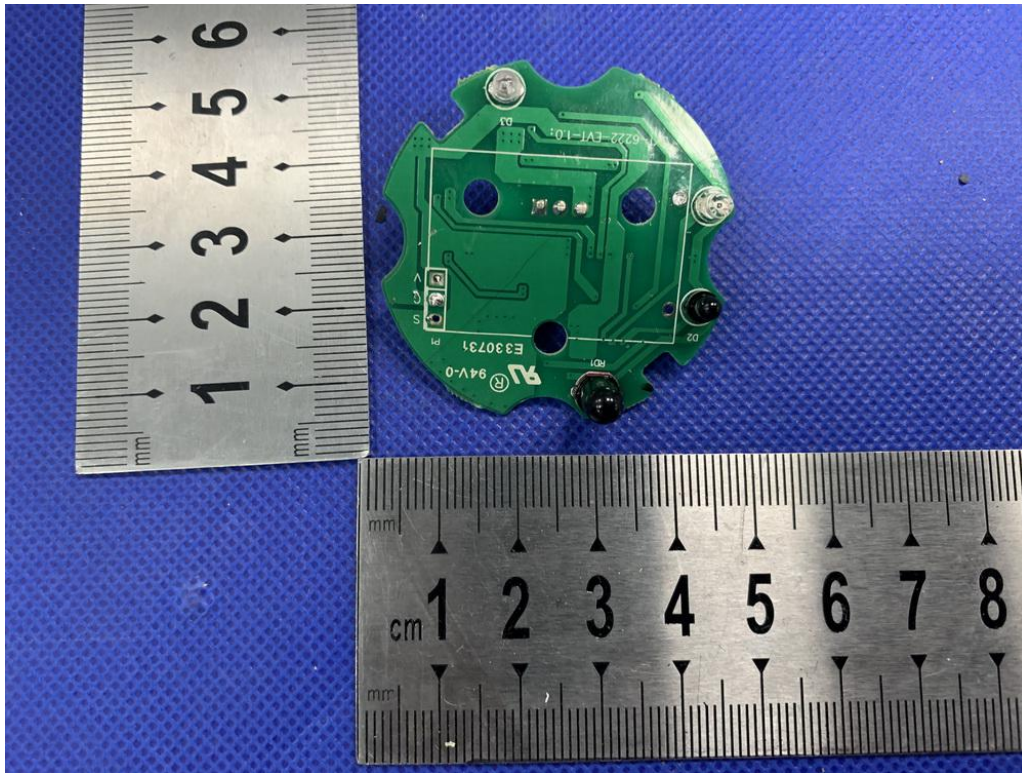


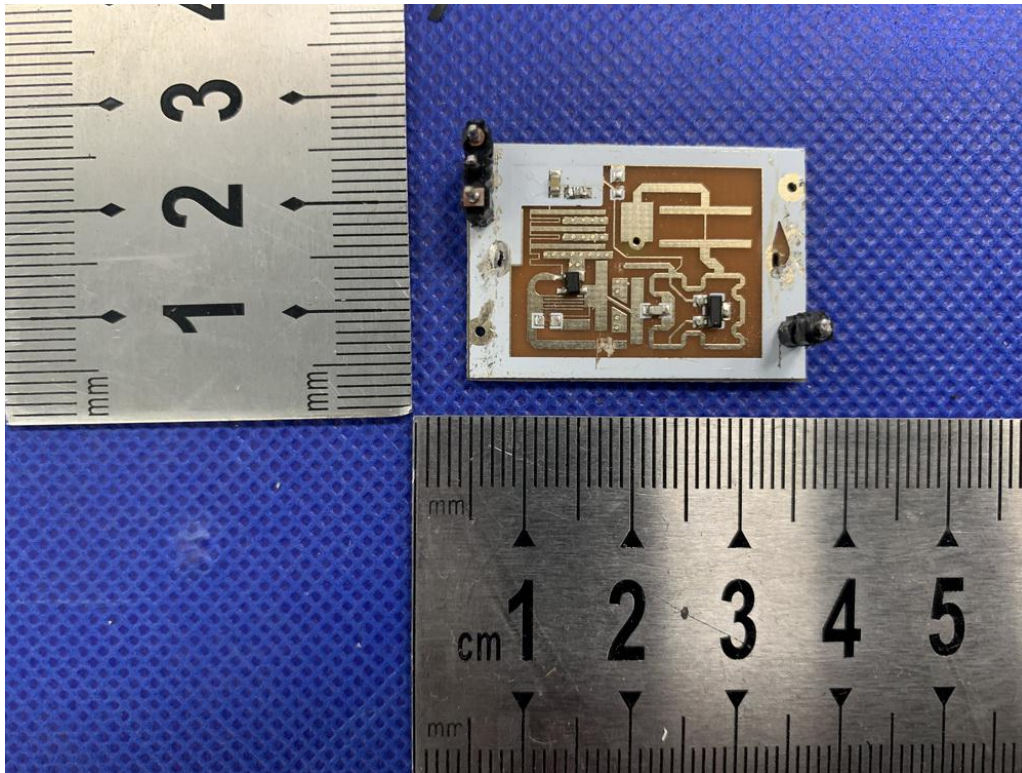












-----The end of report-----