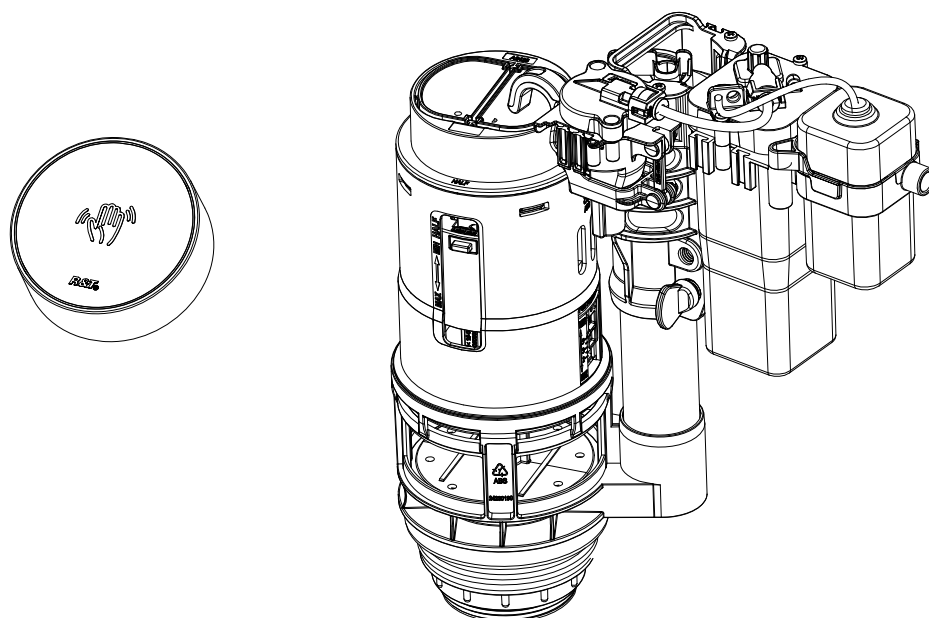




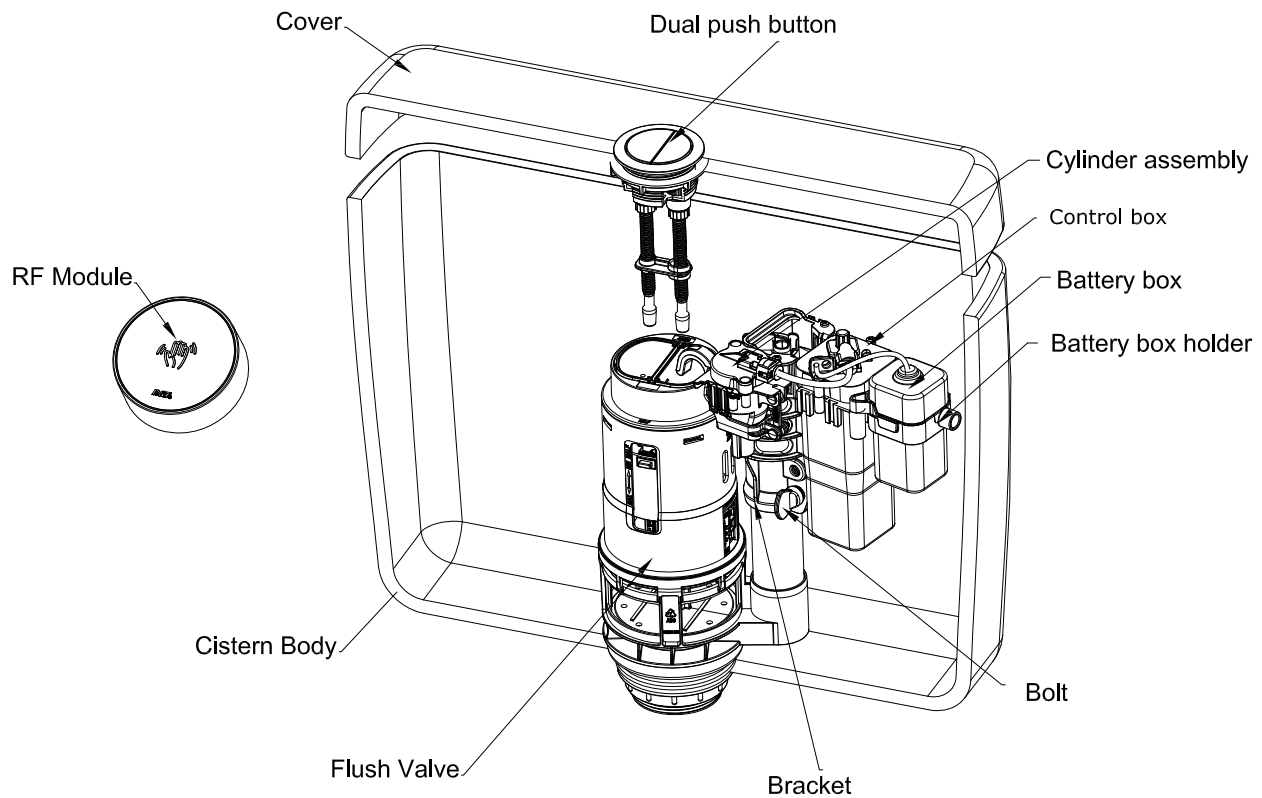
User Manual



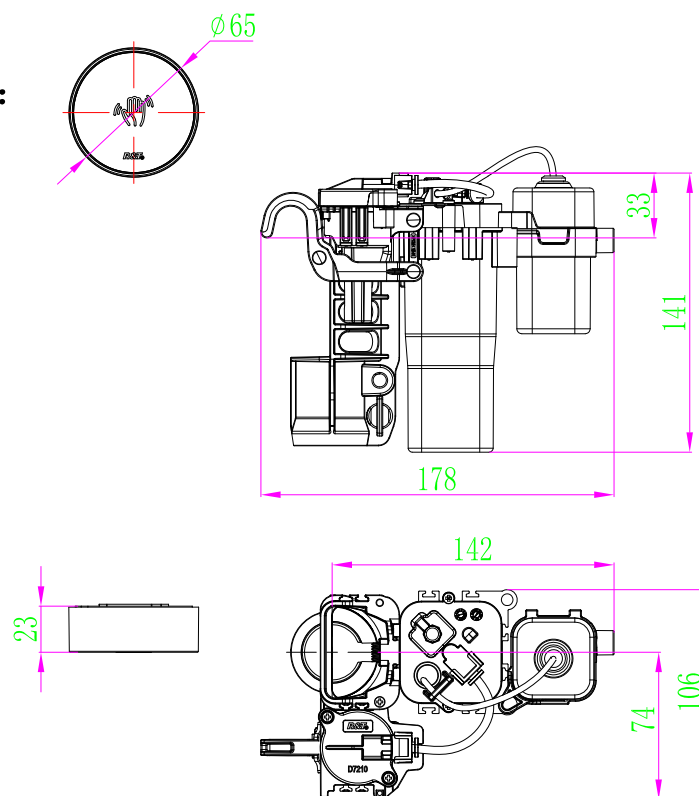
Contents

I :D7210 Installation Instructions (Wireless, Capacitive).....	1
II :D7210 Parts List (Wireless, Capacitive).....	5
III:D7210 Operation Instructions (Wireless, Capacitive).....	6
IV:D7210 Introduction and Cautions.....	9

D7210 Touchless Flush Sensor Module Installation Instructions (Wireless, Capacitive)



Dimensions(mm):

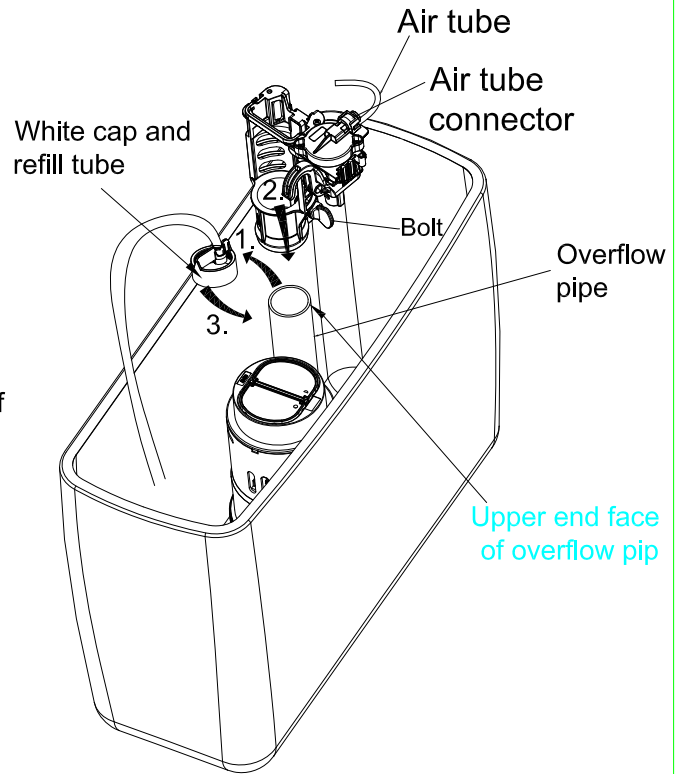
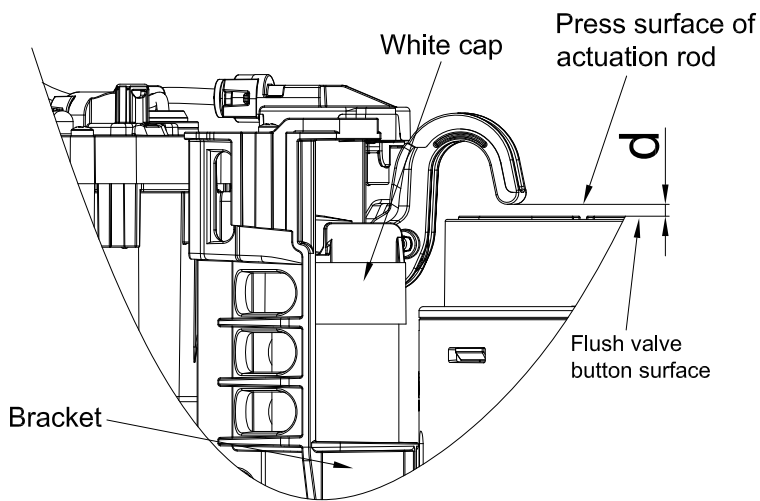


D7210 Touchless Flush Sensor Module Installation Instructions (Wireless, Capacitive)

1. Take out all related accessories (refer to the accessories list).

2. Remove white cap and refill tube firstly.

Then, insert bracket into the overflow pipe (The outer diameter of overflow pipe is $\varnothing 26\text{mm}$ - $\varnothing 33\text{mm}$). Installation bushing is needed if the outer diameter $< \varnothing 30\text{mm}$, adjust the height, snap actuation rod to button (To half flush button if a dual flush valve), and tighten bolts. The relative height range of overflow pipe and flush valve button is shown as below. Re-install the white cap and refill tube after installation.

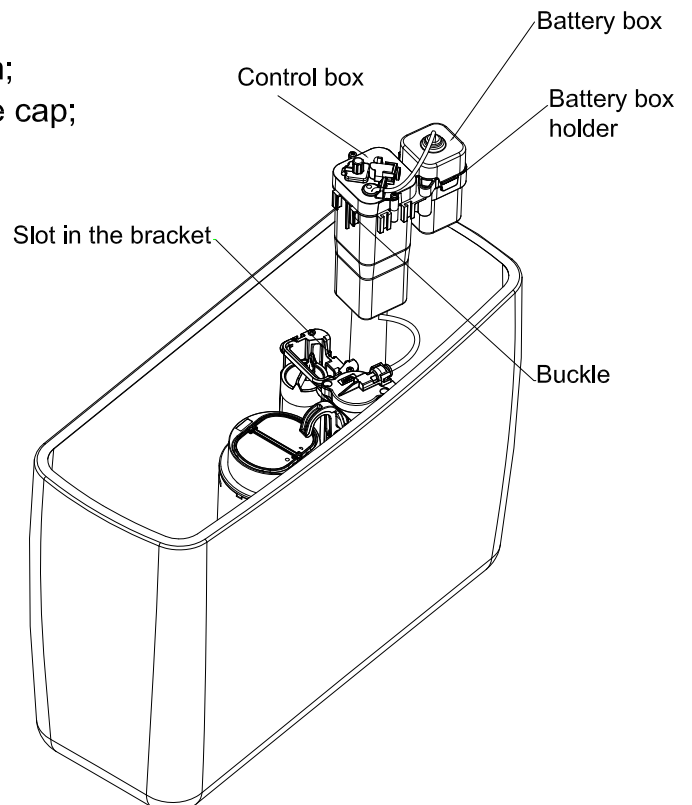


*The distance between actuation rod press surface and flush valve button surface $d=0 \sim 1\text{mm}$;

*Bracket installation without interference with white cap;

*Actuation rod can be pressed into place smoothly without interference with flush valve.

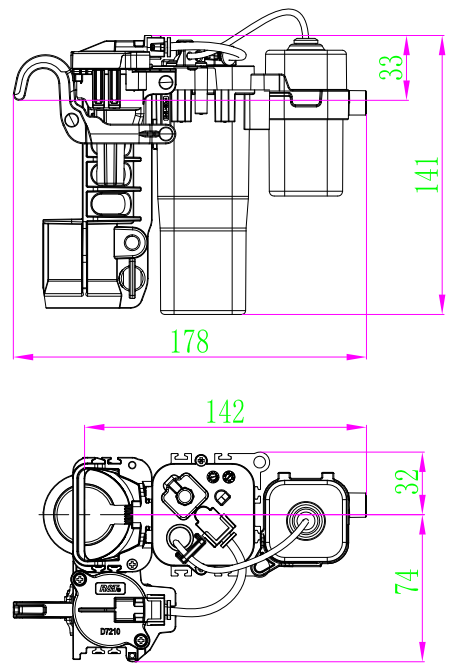
3. Insert the buckle in the control module into the slot in the bracket. Then put the battery box into the hanger and connect it with the control module (choose one of the four connection methods on page 3 according to the water tank space). And finally insert the air pipe (about 18mm) into the connector of the cylinder and the control module separately.



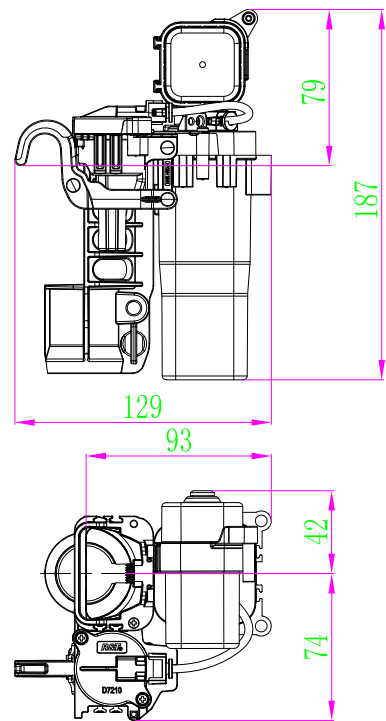
D7210 Touchless Flush Sensor Module Installation Instructions

Dimensions:mm;

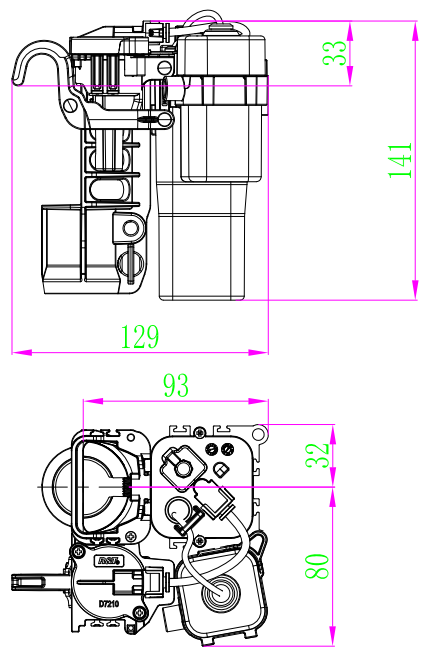
Battery box installation method 1:



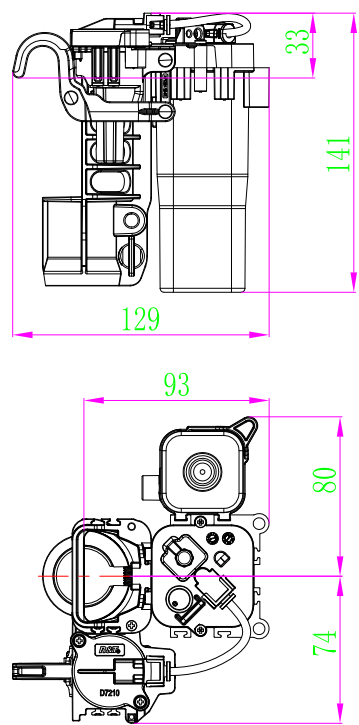
Battery box installation method 2:



Battery box installation method 3:

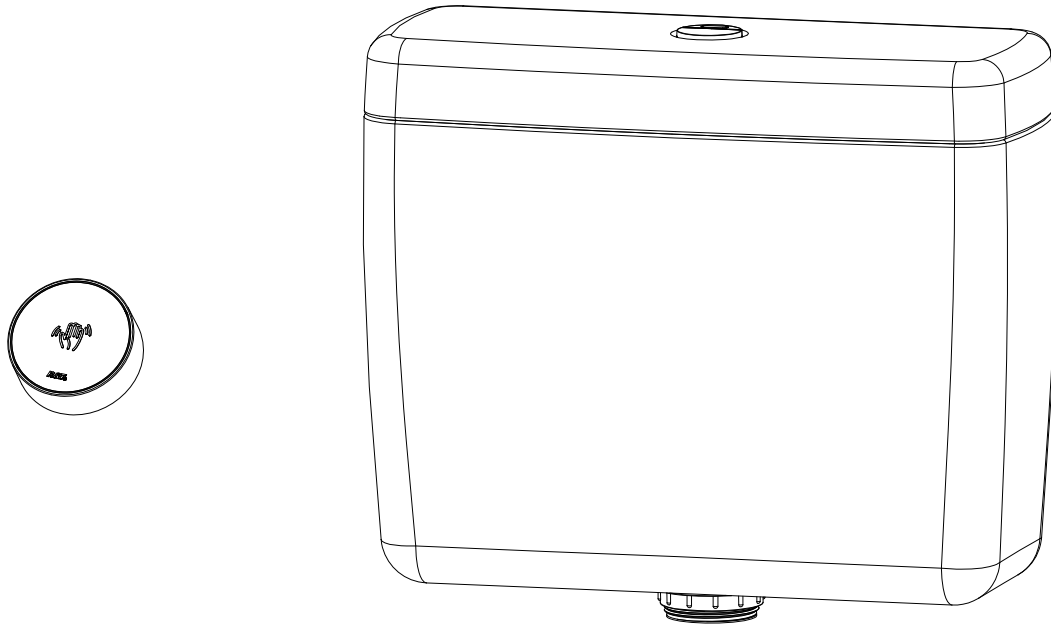


Battery box installation method 4:



D7210 Touchless Flush Sensor Module Installation Instructions (Wireless, Capacitive)

4. Cover the lid of the water tank and the installation is completed.






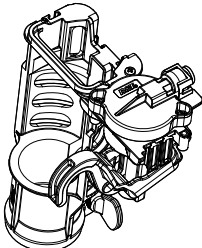
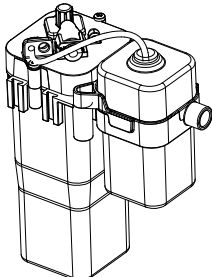
Note:

After installation, please power on and operate once to reset the whole module to the initial state.

5.Troubleshooting

Issue	Cause	Solutions
Low flush volume	1. The installation position of the actuation rod is too high and it is not pressed on the flush button properly. 2. The air pipe is not installed in place resulting in air leakage. 3. The actuation rod interferes with the flush valve during the pressing process.	1. Re-adjust the fixed position of the bracket. 2. Re-insert the air tube into the quick-connect assembly. 3. Re-adjust the relative position of the actuation module and the water tank.
No automatic flushing when waving hand	1. Hand is outside of sensing range. 2. Insufficient battery voltage (Sensor module indicator flashes 12 times slowly) 3. Code matching is not completed.	1. Put hand within sensing range (2-4cm)owly) 2. Replace the batteries. 3. Re-match codes according to instructions.
Leakage	The installation position of the drive rod is too low, causing the water stop pad to not be close to the drain.	Re-adjust the fixed position of the bracket.

D7210 Touchless Flush Sensor Module Parts List (Wireless, Capacitive)

Part Name	Photo	Quantity	Color	Note
RF Sensor module		1		Wireless connection, wave hand to flush
Air Tube		1	Transparent	Used to connect control module and cylinder kit
Installation bush		1		Suitable for slim tube flushvalve
Drive assembly		1		Including bracket, cylinder kit and bolt
Control box assembly		1		Including control box, battery box and hanger
User Manual and Warranty Card		1		

D7210 Touchless Flush Sensor Module Operation Instructions (Wireless, Capacitive)

I. Specifications

Power Supply	4pcs AA alkaline batteries (battery box) + 3pcs AAA alkaline batteries (wireless sensor module)
Operating temperature	2°C-45°C
Maximum sensing distance	2-4cm

II. Instructions

Sensor Flushing:

When hand within the sensing range $< 1s$, a half flushing is activated.

When hand within the sensing range $\geq 1s$, a full flushing is activated (Re-sensed after hand away).

The indicator lights up when sensing received.

Low-voltage reminder:

If the battery voltage of sensor module is low, when sensing, sensor module indicator flashes 5 times and perform flushing.

If the battery voltage of control box is low, when sensing, sensor module indicator flashes 12 times and perform flushing. Please replace the battery accordingly for normal use.

D7210 Touchless Flush Sensor Module Operation Instructions (Wireless, Capacitive)

This device complies with Part 15 of the FCC Rules. Operation is subject to the following two conditions:

- (1) this device may not cause harmful interference, and
- (2) this device must accept any interference received, including interference that may cause undesired operation.

Warning: Changes or modifications to this unit not expressly approved by the party responsible for compliance could void the user's authority to operate the equipment.

NOTE: This equipment has been tested and found to comply with the limits for a Class B digital device, pursuant to Part 15 of the FCC Rules. These limits are designed to provide reasonable protection against harmful interference in a residential installation. This equipment generates, uses and can radiate radio frequency energy and, if not installed and used in accordance with the instructions, may cause harmful interference to radio communications.

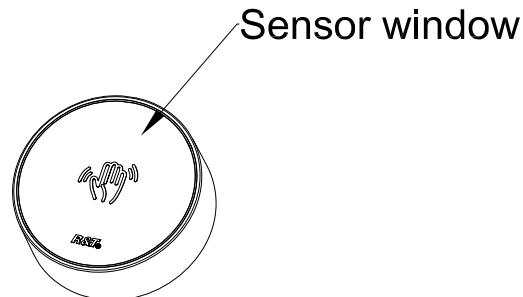
However, there is no guarantee that interference will not occur in a particular installation. If this equipment does cause harmful interference to radio or television reception, which can be determined by turning the equipment off and on, the user is encouraged to try to correct the interference by one or more of the following measures:

- Reorient or relocate the receiving antenna.
- Increase the separation between the equipment and receiver.
- Connect the equipment into an outlet on a circuit different from that to which the receiver is connected.

Consult the dealer or an experienced radio/TV technician for help.

D7210 Touchless Flush Sensor Module Operation Instructions (Wireless, Capacitive)

3. Flush volume adjustment



Hand wave adjust:

1. Within 5 minutes of power-on or exiting hand wave adjustment mode, 5 consecutive effective sensing at intervals less than 2S (cylinder movement completed to next hand wave). Gear is successfully adjusted if action performed automatically after no operation for 10S after 5 times of flush.
2. Adjust level to the maximum if the flush volume corresponded is not the maximum. Or restore to the level before.
3. Exit hand wave adjustment mode after no operation for 15s.

VI. Battery installation

1. Only use 4pcs 1.5V AA alkaline batteries (for battery box), 3pcs 1.5V AAA alkaline batteries (for RF sensor module). Batteries not supplied.
2. Do not mix old and new batteries or different battery brands.
3. Battery life will be significantly reduced when using non-alkaline batteries.
4. The system will act automatically once when powered on.

<p>Battery box</p> <p>⚠ When the cover is buckled, squeeze the side of the rubber plug with your fingers to exhaust the air in the box to ensure the sealing.</p>	<p>RF Sensor Module:</p> <p>Put the batteries (3pcs 1.5V AAA alkaline batteries) into the sensor module and tighten the screws. ※Note: The sensor module batteries need to be installed within 3 minutes of installing batteries into control module and then the modules will automatically match codes.</p>
--	--

D7210 Touchless Toilet Flush kit Drive Module Introduction

The D7210 Touchless flush kit drive module is a new product developed by our company based on the general increase in hygiene awareness around the world. Especially during the outbreak of the epidemic, people need a touchless controlled flushing module to prevent cross-infection during the epidemic and daily contact with bacteria during the manual flushing. However, the cost of completely replacing the entire flush valve is very high and it is not convenient as well. Therefore, people need a set of sensor-driven flush module kit that can be directly connected to the user's existing flush valve to add the new sensing flush function. Therefore, D7210 is a new product with complete functions, intelligence, hygiene and high cost performance.

Cautions

1. Read all operation and installation instructions carefully, and install step by step according to the instructions to avoid damage to the product or bodily injury caused by improper operation.
2. Please do not use corrosive cleaners or solvents, or any chemical composition agent in the water tank. Cleaners or solvents containing chlorine or calcium hypochlorite will seriously damage the accessories, resulting in shortened life and abnormal functions. The company will not be responsible for the failure of this product or other associated damages due to the use of the above-mentioned cleaning agents or solvents.
3. Keep sensor window clean and away from water.
4. The working water temperature range of this product is: 2°C-45°C.
5. The working pressure range of this product is: 0.02Mpa-0.8Mpa.
6. Do not install the product near or in contact with high temperature objects.
7. It's recommended to use 4pcs 'AA' alkaline batteries for power supply.
8. Due to technology or process updates, this manual is subject to change without notice.



Xiamen R&T Plumbing Technology Co., Ltd.

Add: No.18 Houxiang Road, Haicang District, Xiamen, 361026, China

Tel: 86-592-6539788

Fax: 86-592-6539723

Email: rt@rtplumbing.com

[Http://www.rtplumbing.com](http://www.rtplumbing.com)