

This device complies with part 15 of the FCC rules. Operation is subject to the following two conditions:

- (1) this device may not cause harmful interference, and
- (2) this device must accept any interference received, including interference that may cause undesired operation.

NOTE: This equipment has been tested and found to comply with the limits for a Class B digital device, pursuant to part 15 of the FCC Rules. These limits are designed to provide reasonable protection against harmful interference in a residential installation. This equipment generates uses and can radiate radio frequency energy and, if not installed and used in accordance with the instructions, may cause harmful interference to radio communications. However, there is no guarantee that interference will not occur in a particular installation. If this equipment does cause harmful interference to radio or television reception, which can be determined by turning the equipment off and on, the user is encouraged to try to correct the interference by one or more of the following measures:

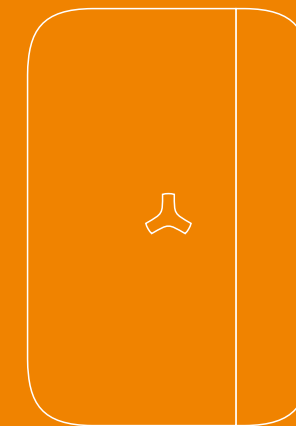
- Reorient or relocate the receiving antenna.
- Increase the separation between the equipment and receiver.
- Connect the equipment into an outlet on a circuit different from that to which the receiver is connected.
- Consult the dealer or an experienced radio/TV technician for help

Changes or modifications to this unit not expressly approved by the party responsible for compliance could void the user's authority to operate the equipment.

RF exposure warning :

This equipment complies with FCC radiation exposure limits set forth for an uncontrolled environment. This equipment shall be installed and operated with minimum distance 20cm between the radiator & body.

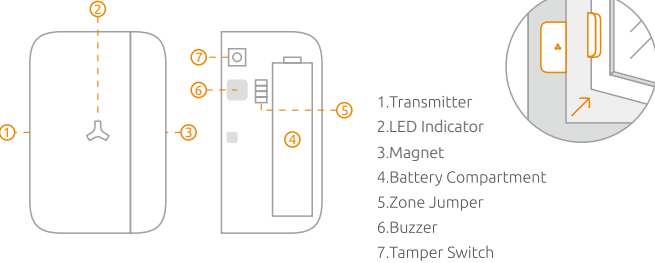
Door / Window Sensor User Manual



Printed in China
2019 V 1.0

Features:

The Door/Window Sensor can be installed on doors, windows and any other objects that open and close. The sensor transmits signal to control panel when the magnet mounted near the sensor is moved away. The tamper protection ensures that sabotage attempts to move the sensor will result in an alarm activation.



Tamper Alarm: Once intruder attempts to move the sensor, built-in buzzer beeps. The control panel will send tamper alarm message to user at the first time.

Zone Jumper: Please follow manual of alarm system for zone setup. The door sensor is set in normal zone1 as default.

Working Status:



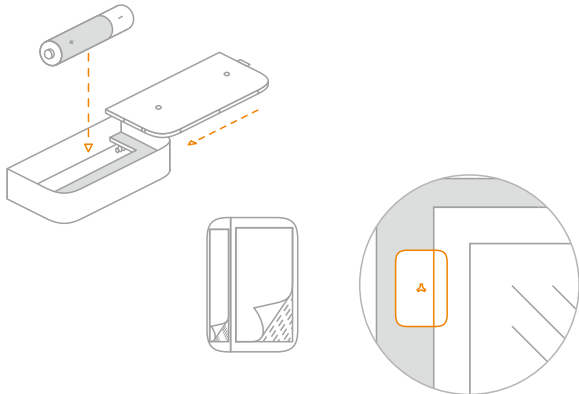
LED flashes once :
Door or window is opened, and the transmitter sends signal to the control panel.



LED flashes 5 times, and buzzer beeps 5 times:
Tamper alarm, low battery indication.
If it's in low battery state, please replace it immediately.

Installation:

1. Open the back cover of the sensor, pull out the battery tab and check the battery is fitted properly.
2. Ensure the area that the sensor will be located is clean and free from dust and moisture. Avoid mounting the sensor in areas with lots of metal or electrical wiring.
3. Use the adhesive strip to carefully mount the sensor on to the door/window frame.
4. Mount the magnet on to the door/ window, no more than 1cm from the sensor.



! It will cause an immediate alarm if the magnet departs from the transmitter more than 2cm in arming state.



Connect Door Sensor to Control Panel:

The new-bought door sensors should be enrolled to the control panel before use. Press enroll button of control panel, trigger the sensor by moving the magnet away from the sensor. The enrolled sensors will automatically appear in the Accessories Menu in the app. You can customize the accessory name, select the zone type and also delete the accessory from the app, if required. For specified operation, please refer to the manual of alarm system.



Specifications:

Power Supply: DC1.5V/AA battery
Standby Current: ≤20uA
Transmit Current: ≤70mA
Wireless Transmit Distance: ≤80 m (in Open Area)
Wireless RF Frequency: FHSS 433MHz
Temperature: -10°C-55°C
Humidity: ≤80% (Non-condensing)
Dimensions (L x W x H): 48 x 71 x 18mm