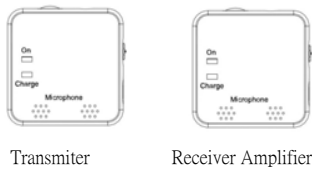


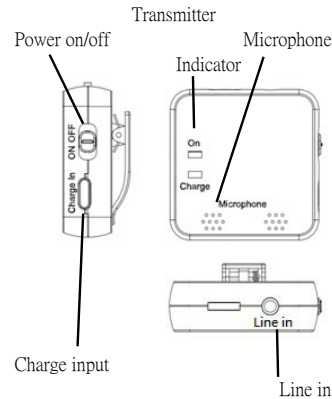
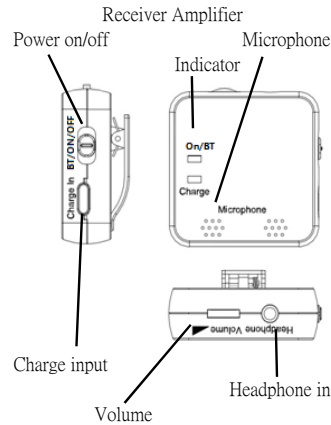
B5

**Bond
Conduction
Headphone
with Receiver
Amplifier and
Transmitter**



Package Content :
Receiver Amplifier * 1pcs
Transmitter * 1pcs
Bond Conduction Headphone * 1pcs
USB Cable * 1pcs

Brief Introduction



What is Bond Conduction

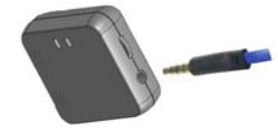
TECHNOLOGY - Bone conduction technology delivers sound wave through the skull to the inner ear.

KEEPING EAR DISEASE AWAY - No need to put into ears, it release your ears to allow the air to circulate. Without covering that, easy to clean, to avoid ear disease caused by sweat.

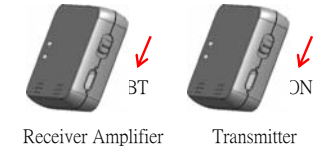
MORE COMFORTABLE - The sound transmits through the bone to auditory nerve, more comfortable and healthier than traditional hearing aids, suitable to people who have trouble in listening.

How to Use

1. Plug the Bond Conduction Headphone into the Headphone jack of Receiver Amplifier



2. Slide the power switch of both Receiver and Transmitter to "ON" position.



3. The Indicator of Both Receiver Amplifier and Transmitter will be flash. Sound is prompt for pairing start. Wait for the pairing finish and Indicator will stop flashing.

4. Once pairing is finished, Transmitter will send the sound received by microphone to Receiver Amplifier.

Alternatively, by using provide Line-in Cable, TV line-out signal can be connected to Transmitter.



5. Adjust the volume control of Receiver Amplifier.



6. Press the clamp and clip on the cloth.



7. Wear the headphone to correct position.



Use Internal Microphone

1. Plug the Bond Conduction Headphone into the Headphone jack.



2. Slide the power switch to "ON" position.



3. Adjust the volume control.



4. Press the clamp and clip on the cloth.



5. Wear the headphone to correct position.



Use as Bluetooth headset

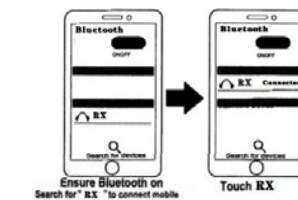
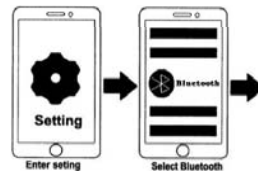
A. Pairing to phone

1. Turn On only Receiver Amplifier.



Receiver Amplifier

2. Turn on Bluetooth on your phone device, scan the bluetooth devices, select RX to connect Receiver Amplifier.



3. Sound prompt is heard for successful connection.

B. Listen to Music

Enjoy Stereo sound music from mobile phone through the headset. After successful pairing. Select your music in the phone and playback/Stop it through your mobile control.

Charge the unit

Connect the USB cable to power source and connect the other end (Type C) to the unit.



Specification :

BlueTooth Version : 4.2

Distance : 10M

Li Battery : 3.7V 500mAh

Play time : around 10 hours

Charging time : around 2.5 hours

Speaker : Bone conduction speaker

Sound level : 88dB

Microphone : -54dB

Frequency range : 100Hz - 18KHz

Volume control : Rotary

Charge input : Type C input

C. Answering a call Or Make a call

Telephone conversation can be done by speaking to Receiver Amplifier and listen by the headset.

Press the answer button on the phone to answer a call and end a call by pressing hang up button on the phone.

This device complies with part 15 of the FCC Rules. Operation is subject to the following two conditions:
(1) This device may not cause harmful interference, and
(2) this device must accept any interference received, including interference that may cause undesired operation. Any Changes or modifications not expressly approved by the party responsible for compliance could void the user's authority to operate the equipment.

Note: This equipment has been tested and found to comply with the limits for a Class B digital device, pursuant to part 15 of the FCC Rules. These limits are designed to provide reasonable protection against harmful interference in a residential installation. This equipment generates uses and can radiate radio frequency energy and, if not installed and used in accordance with the instructions, may cause harmful interference to radio communications. However, there is no guarantee that interference will not occur in a particular installation. If this equipment does cause harmful interference to radio or television reception, which can be determined by turning the equipment off and on, the user is encouraged to try to correct the interference by one or more of the following measures:
-Reorient or relocate the receiving antenna.
-Increase the separation between the equipment and receiver.
-Connect the equipment into an outlet on a circuit different from that to which the receiver is connected.
-Consult the dealer or an experienced radio/TV technician for help.

The device has been evaluated to meet general RF exposure requirement. The device can be used in portable exposure condition without restriction.