

# BeSpoon SmartAntenna vs Wtag

Product differences

# Presentation:

BeSpoon SmartAntenna and Wtag are 2 products based **on the same bare PCB**

- > Electrical schematics are the same for both

- > **The Bill-of-material is different**

For power supply:

- Wtag has a Battery and a Wireless Charging system for it.

- SmartAntenna has a USB-C connector

Plastics for SmartAntenna adds an opening for USB-C connector and screws inserts

# SmartAntenna

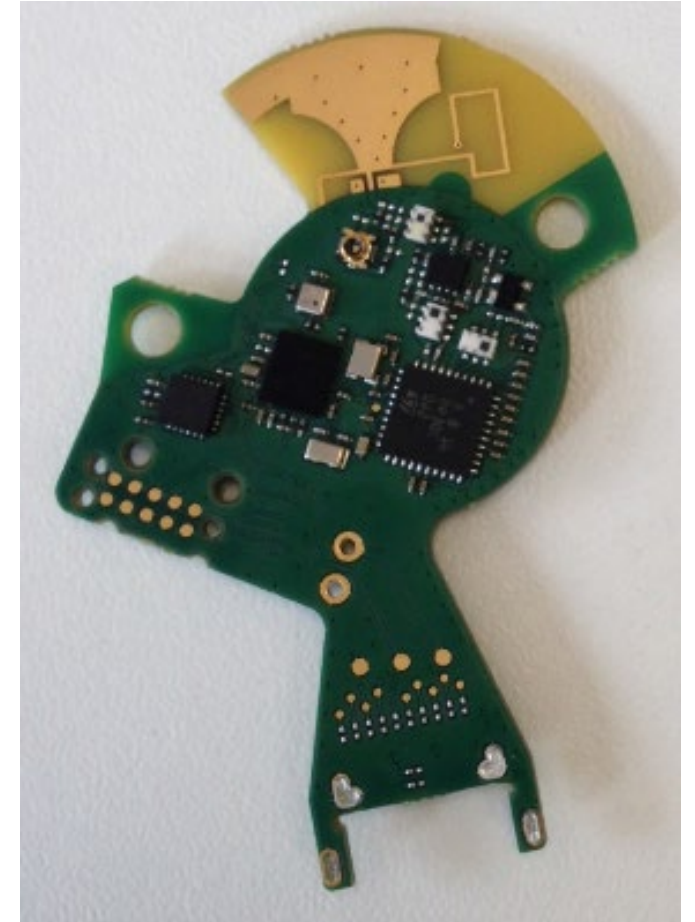
PCB top



No differences

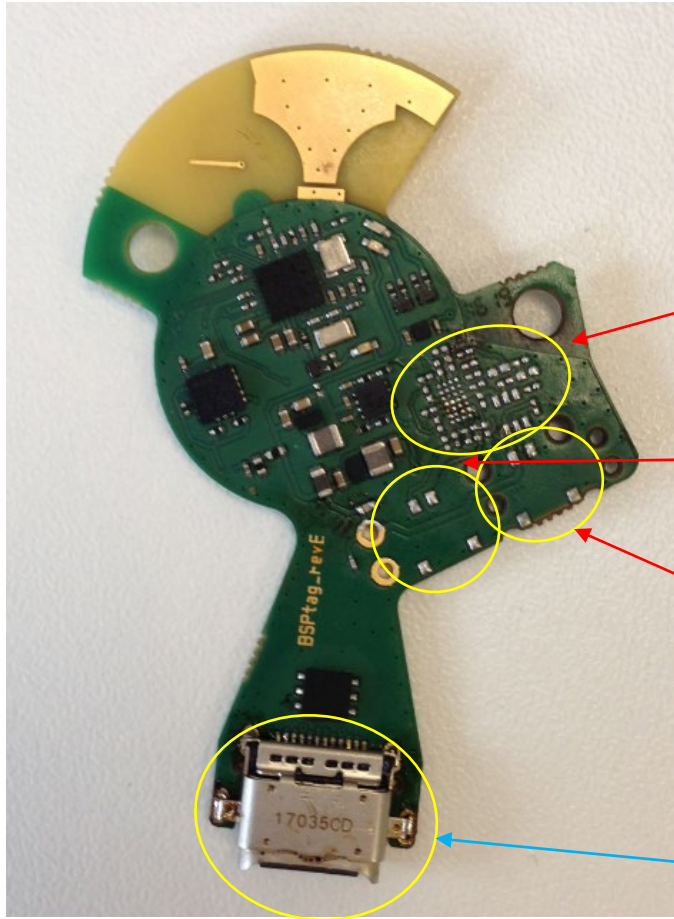
# Wtag

PCB top



# SmartAntenna

PCB bottom



NC

NC

NC

Wireless-Charging circuit

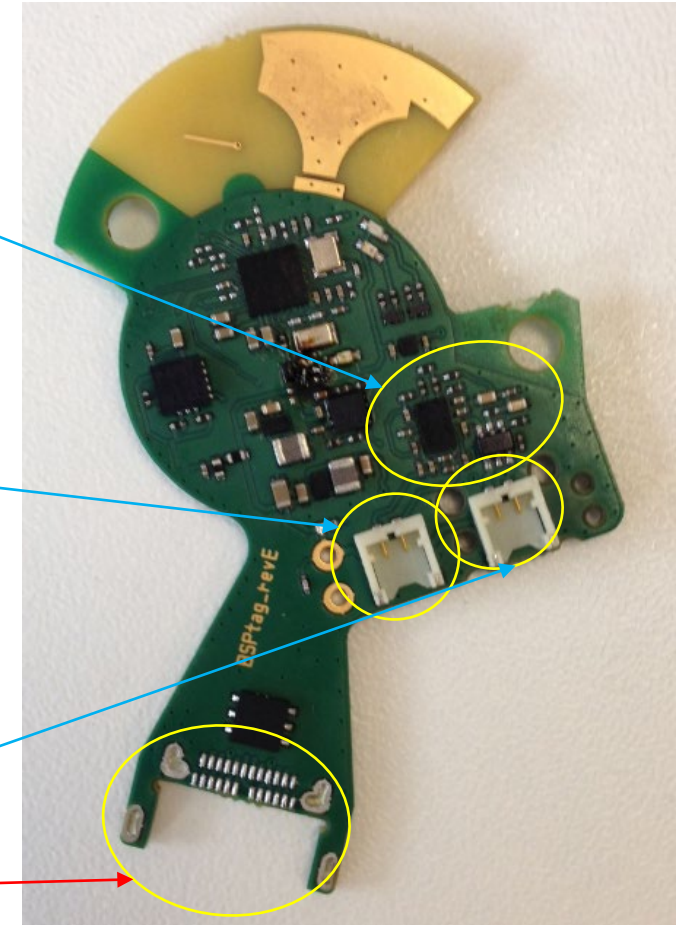
WC-coil connector

Battery connector

USB-C connector

# Wtag

PCB bottom

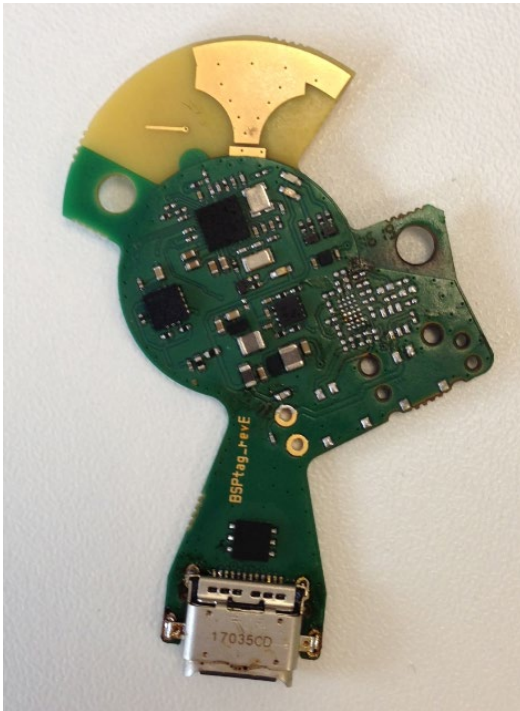


NC

# SmartAntenna

Extra connections

NONE

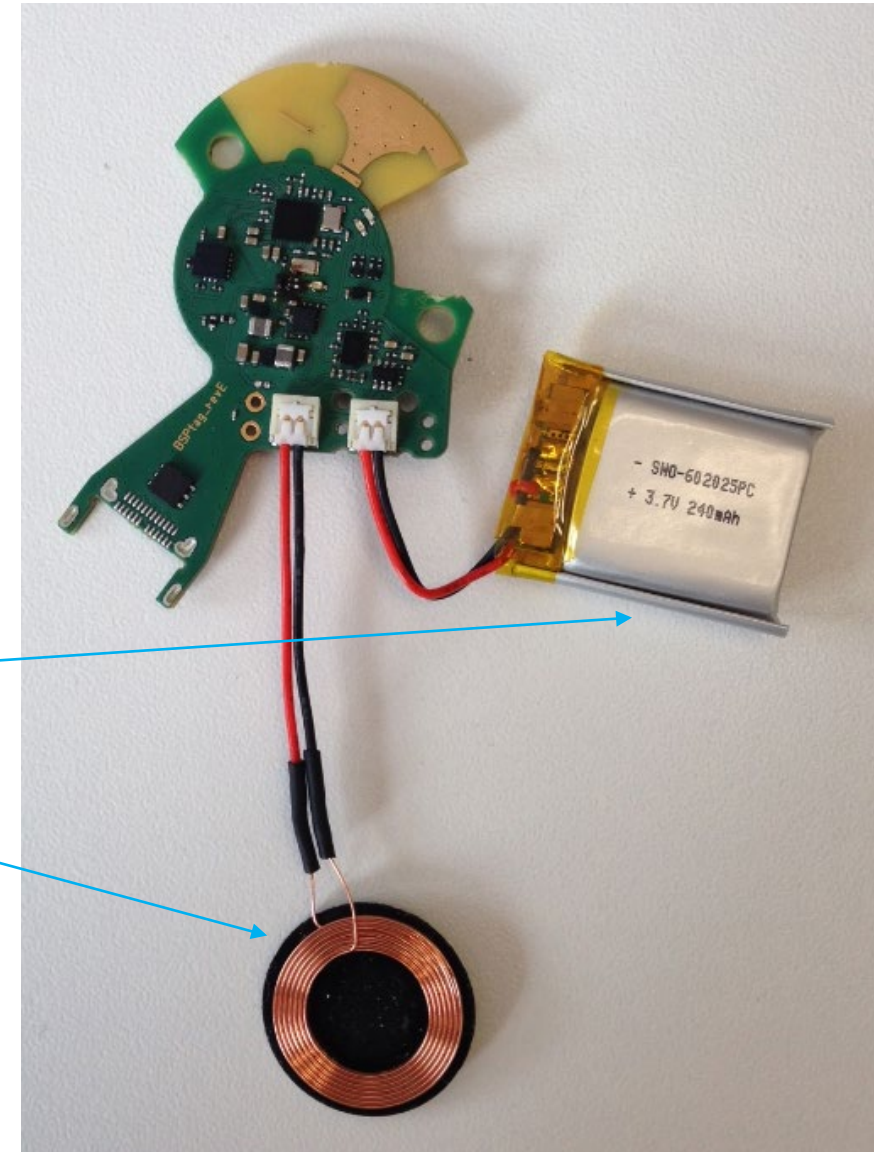


# Wtag

Extra connections

Battery

WC-coil





# SmartAntenna

Integration in Plastics



Screw inserts

Hole for USB-C connector

# Wtag

Integration in Plastics

