

## **INTERNAL PHOTOGRAPHS**

This document contains 10 photographs

**Photograph No.1**  
**3D controller internal view**



Photograph No.2  
3D controller internal view

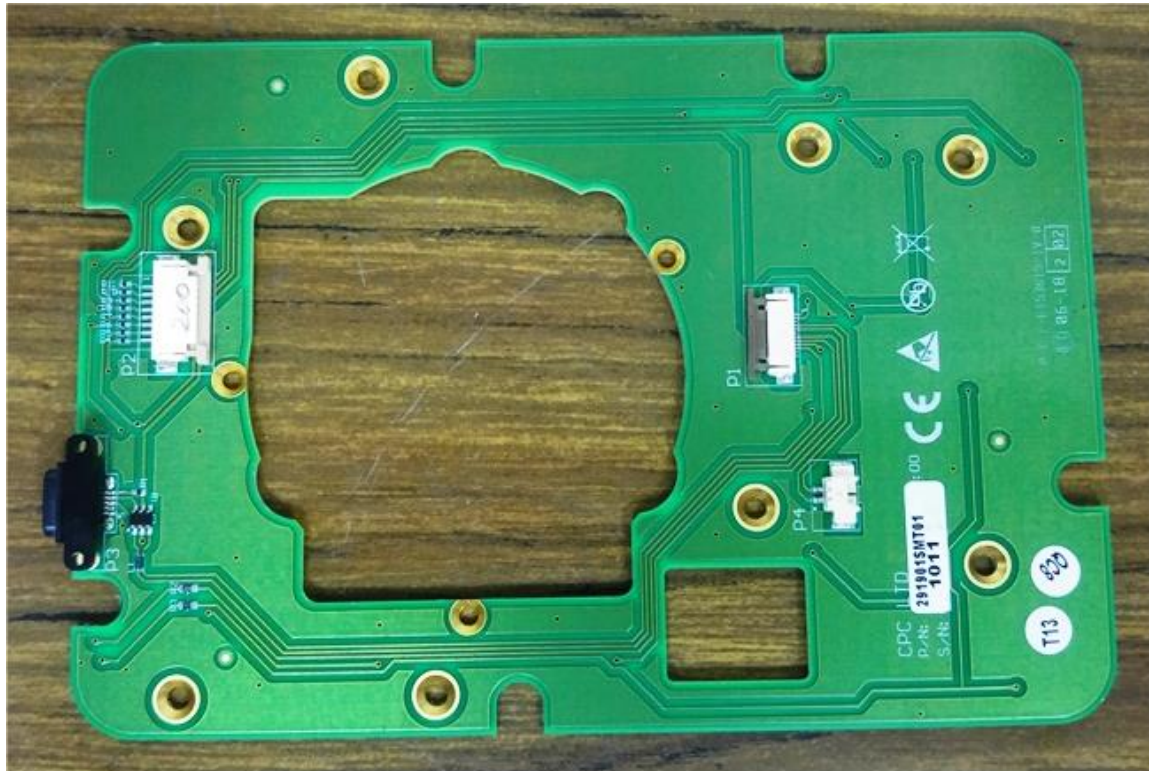


**Photograph No.3**  
**3D controller internal view with main PCB removed**

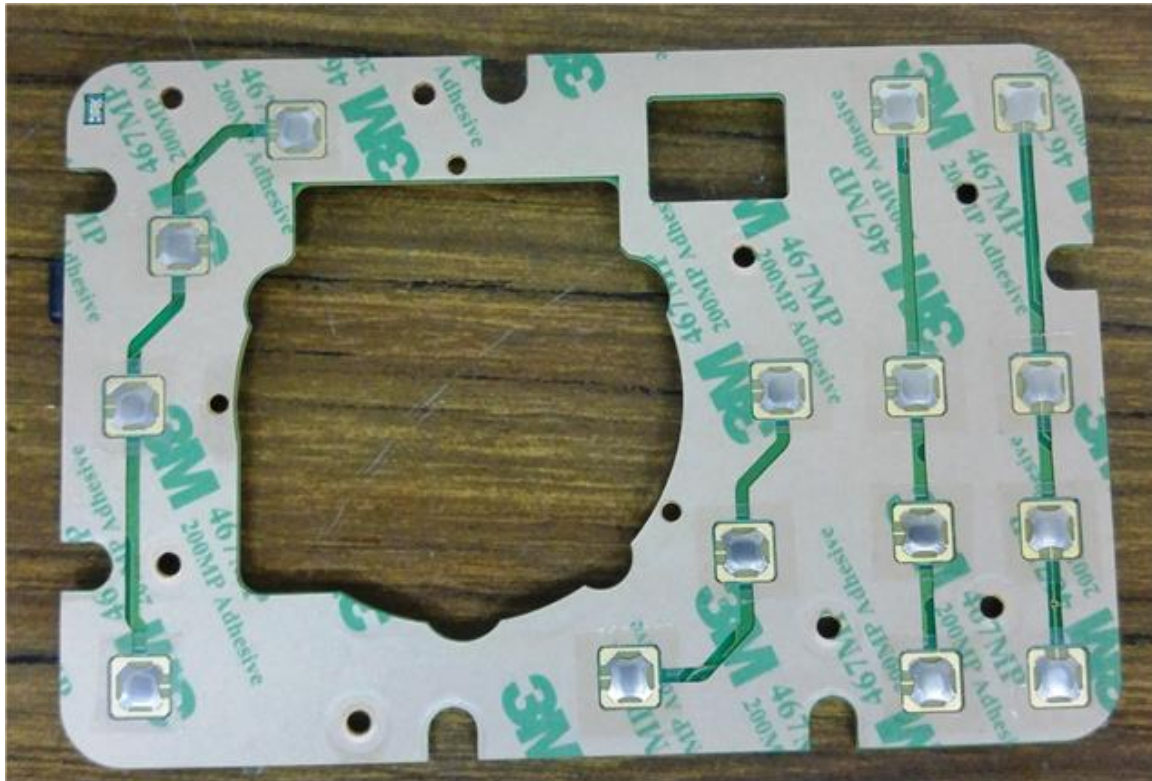




**Photograph No.4**  
**3D controller main PCB front view**



Photograph No.5  
3D controller main PCB second side view

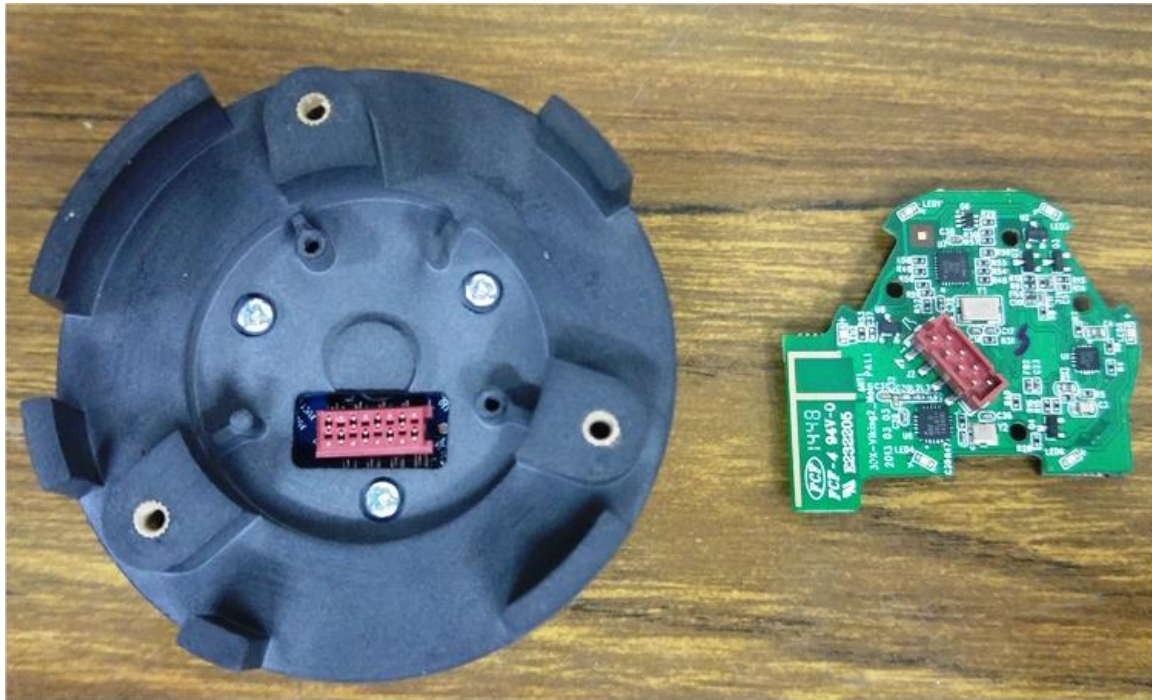


**Photograph No.6**  
**3D controller RF part**





**Photograph No.7**  
**3D controller RF part**

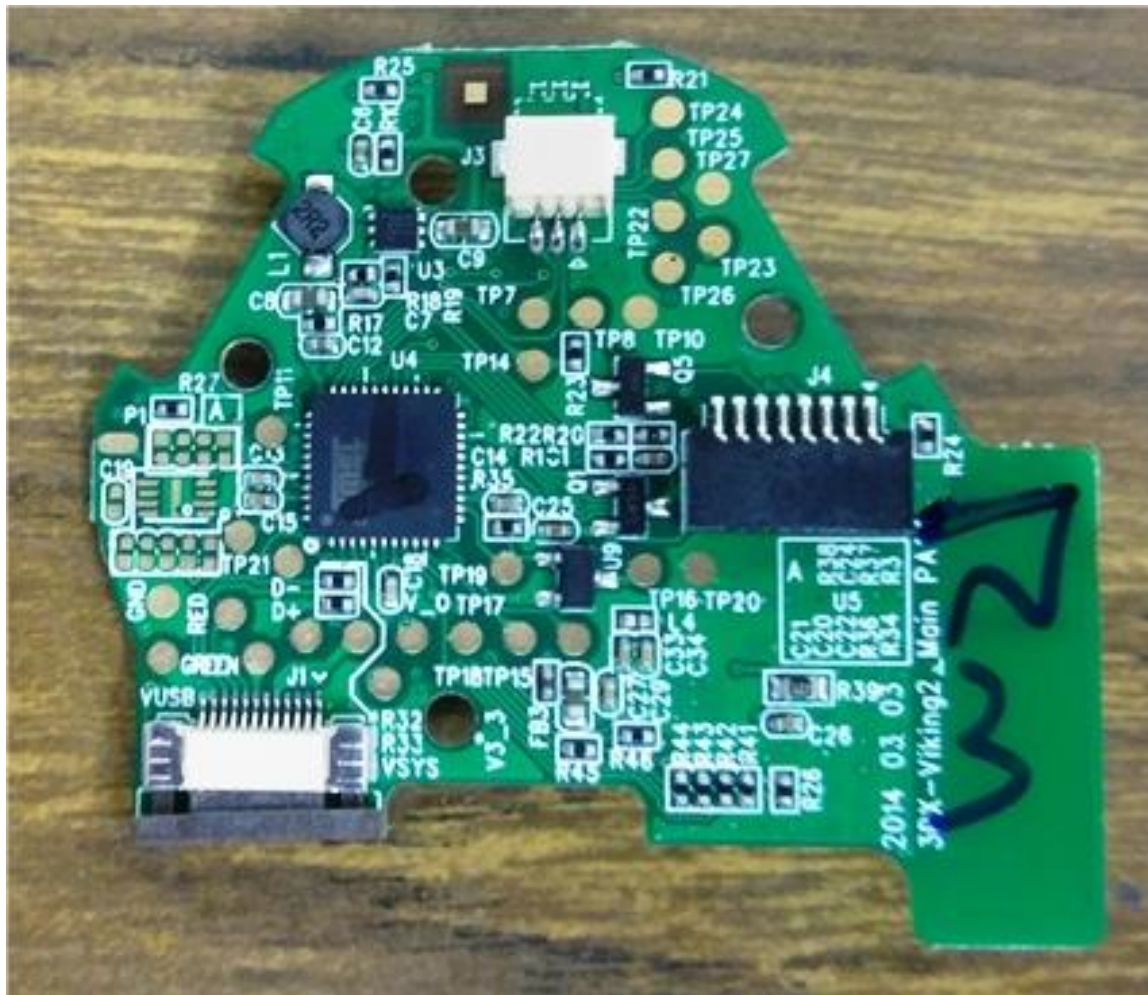




Photograph No.8  
3D controller RF PCB front view



Photograph No.9  
3D controller RF PCB second side view



Photograph No.10  
3D controller antenna

