

Hamourd

ROBOT INSTRUCTION



When charging with a Type C plug, the light is red; when fully charged, the light is green.

Robots use Type C cables, for charging.



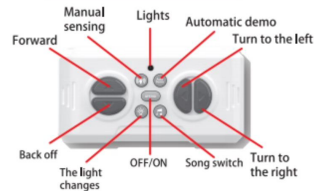
The remote control uses 2×1.5V AAA non rechargeable batteries (batteries are included)

SWITCH OPERATION INSTRUCTION



Turn the back button to the left to turn on the robot, then the light flashes. Press the remote control key to connect, it will make a sound to indicate a successful connection. Long press the remote control button to disconnect the connection, and press the back button to the right to turn off the robot.

REMOTE CONTROL OPERATION INSTRUCTION



CHARGING OPERATION INSTRUCTION



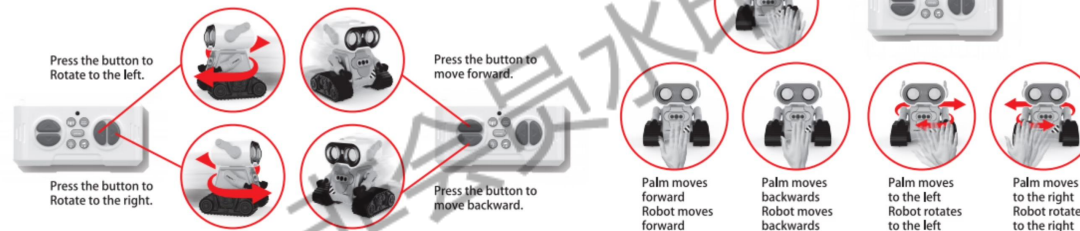
The back body adopts a type C Charging port as the charging method. The charging cable equipped with the robot should be used for charging.

EYE COLOR SWITCHING INSTRUCTION



Eyes can change seven colors. Press the light switch button to change the eye color.

FUNCTION INTRODUCTION



FCC Compliance Statements

This device complies with Part 15 of the FCC Rules. Operation is subject to the following two conditions: (1) this device may not cause harmful interference, and (2) this device must accept any interference received, including interference that may cause undesired operation.

Note: This equipment has been tested and found to comply with the limits for a Class B digital device, pursuant to Part 15 of the FCC Rules. These limits are designed to provide reasonable protection against harmful interference in a residential installation. This equipment generates, uses and can radiate radio frequency energy and, if not installed and used in accordance with the instructions, may cause harmful interference to radio communications. However, there is no guarantee that interference will not occur in a particular installation.

If this equipment does cause harmful interference to radio or television reception, which can be determined by turning the equipment off and on, the user is encouraged to try to correct the interference by one or more of the following measures:

- Reorient or relocate the receiving antenna.
- Increase the separation between the equipment and receiver.
- Connect the equipment into an outlet on a circuit different from that to which the receiver is connected.
- Consult the dealer or an experienced radio/TV technician for help.

Caution: Changes or modifications not expressly approved by the party responsible for compliance could void the user's authority to operate the equipment.

This equipment complies with FCC radiation exposure limits set forth for an uncontrolled environment. This transmitter must not be co-located or operating in conjunction with any other antenna or transmitter.