

## SOM4019

IPQ4019 SOM module with dual band dual concurrent Wi-Fi

## User Manual

## Note:

Changes or modifications to this unit not expressly approved by the party responsible for compliance could void the user authority to operate the equipment.

To comply with FCC RF exposure compliance requirements, a separation distance of at least 20 cm must be maintained between the antenna of this device and all persons.

This Transmitter must not be co-located or operating in conjunction with any other antenna or transmitter

This device is intended only for OEM integrators under the following conditions:

- 1) The antenna must be installed such that 20 cm is maintained between the antenna and users. For laptop installations, the antenna must be installed to ensure that the proper spacing is maintained in the event the users places the device in their lap during use (i.e. positioning of antennas must be placed in the upper portion of the LCD panel only to ensure 20 cm will be maintained if the user places the device in their lap for use) and
- 2) The transmitter module may not be co-located with any other transmitter or antenna.

As long as the 2 conditions above are met, further transmitter testing will not be required. However, the OEM integrator is still responsible for testing their end-product for any additional compliance requirements required with this module installed (for example, digital device emissions, PC peripheral requirements, etc.).

**IMPORTANT NOTE:** In the event that these conditions can not be met (for example certain laptop configurations or co-location with another transmitter), then the FCC authorization is no longer considered valid and the FCC ID can not be used on the final product. In these circumstances, the OEM integrator will be responsible for re-evaluating the end product (including the transmitter) and obtaining a separate FCC authorization.

### End Product Labeling

This transmitter module is authorized only for use in devices where the antenna may be installed such that 20 cm may be maintained between the antenna and users (for example access points, routers, wireless ASDL modems, certain laptop configurations, and similar equipment). The final end product must be labeled in a visible area with the following: "Contains TX FCC ID: 2AVW3-SOM4019."

### RF Exposure Manual Information That Must be Included

The users manual for end users must include the following information in a prominent location "IMPORTANT NOTE: To comply with FCC RF exposure compliance requirements, the antenna used for this transmitter must be installed to provide a separation distance of at least 20 cm from all persons and must not be co-located or operating in conjunction with any other antenna or transmitter."

### Additional Information That Must be Provided to OEM Integrators

The end user should NOT be provided any instructions on how to remove or install the device.

## SOM4019

IPQ4019 SOM module with dual band dual concurrent Wi-Fi



### Main Features

- Chipset: industrial-grade IPQ4019 chipset
- Standard: 802.11ABGN/AC
- PCB mounting with normal pin header
- Antenna: 2 x IPEX connectors, 2T2R
- Data rate up to 300 Mbps + 866 Mbps
- Enhanced wireless security: WEP, WPA, WPA2
- High RF power for longer communication range

### Product Overview

SOM4019 module is based on an IPQ4019/IPQ4029 SoC from Qualcomm, which incorporates a powerful quad-core ARM Cortex A7 processor. It is ideal for resource demanding applications including routers, gateways and access points. SOM4019 comes with a high-power, dual-band concurrent radio supporting 802.11ac Wave2 technology (2x2 MIMO). It also has USB ports and supports other miscellaneous interfaces, which can be configured as general-purpose I/O pins.

### Specification

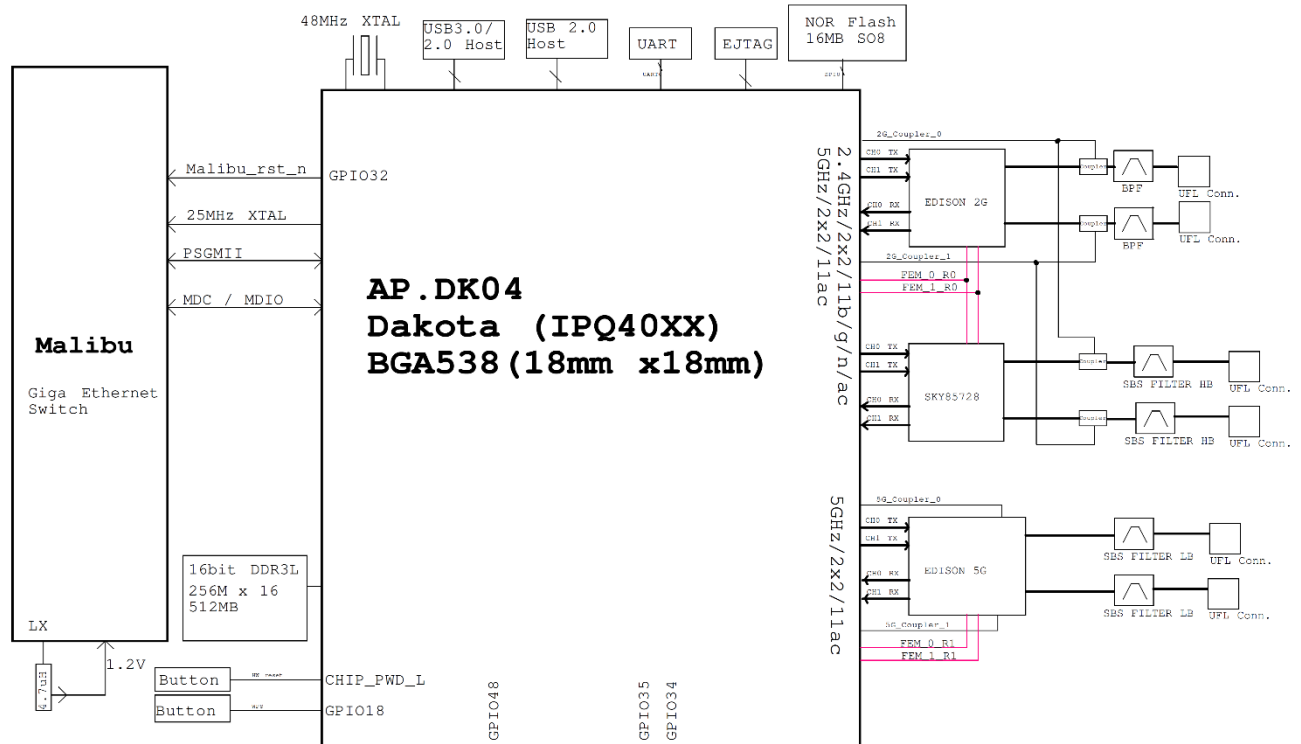
Item	Description	SOM4019
<b>Processor</b>	ARM Cortex-A7, 716.8MHz, 256KB L2 Cache	IPQ4019
<b>Memory</b>	DRAM	DDR3L 512 MB
	NOR FLASH	32MB
<b>Wi-Fi</b>	IEEE 802.11 b/g/n 2x2 2.4GHz 20/40 MHz	2412MHz - 2482MHz
	IEEE 802.11 an/ac 2x2 5GHz 20/40/80 MHz	5180MHz - 5240MHz 5745MHz - 5825MHz
<b>Peripherals</b>	PCIe 2.0	1
	USB 2.0	1
	USB 3.0	1
	UART	2
	SPI ( Master )	1
	I2C	2
	GPIO	14
	JTAG	1
	Copper 10BASE-Tx/100BASE-TX/1000BASE-T	2
	Reset	1
	SDIO3.0/eMMC	1
<b>RF Interface</b>	Antenna connector	IPEX
<b>Temperature</b>	Operating temperature	-40~75°C
	Storage temperature	-40 °C ~ 85 °C

## SOM4019

IPQ4019 SOM module with dual band dual concurrent Wi-Fi

### Block diagram

#### Functional Block Diagram



### Pin Definition

Pin ID	Pin Name	Type	Description
P1	GND	GND	Ground
P2	GND	GND	Ground
P3	P3_TRX0+	AI/AO	PHY3 Media Dependent Interface pair 0, connect to XFMR
P4	P3_TRX0-	AI/AO	
P5	P3_TRX1+	AI/AO	PHY3 Media Dependent Interface pair 1, connect to XFMR
P6	P3_TRX1-	AI/AO	
P7	P3_TRX2+	AI/AO	PHY3 Media Dependent Interface pair 2, connect to XFMR
P8	P3_TRX2-	AI/AO	
P9	P3_TRX3+	AI/AO	PHY3 Media Dependent Interface pair 3, connect to XFMR
P10	P3_TRX3-	AI/AO	
P11	GND	GND	Ground
P12	GND	GND	Ground
P13	P4_TRX0+	AI/AO	PHY4 Media Dependent Interface pair 0, connect to XFMR
P14	P4_TRX0-	AI/AO	

# SOM4019

IPQ4019 SOM module with dual band dual concurrent Wi-Fi

P15	P4_TRX1+	AI/AO	PHY4 Media Dependent Interface pair 1, connect to XFMR
P16	P4_TRX1-	AI/AO	
P17	P4_TRX2+	AI/AO	PHY4 Media Dependent Interface pair 2, connect to XFMR
P18	P4_TRX2-	AI/AO	
P19	P4_TRX3+	AI/AO	PHY4 Media Dependent Interface pair 3, connect to XFMR
P20	P4_TRX3-	AI/AO	
P21	GND	GND	Ground
P22	GND	GND	Ground
P23	PCIE_TXP	AO	Clock to PCIe end point
P24	PCIE_TXN	AO	Clock to PCIe end point
P25	PCIE_RXP	AI	PCIe receive lane – positive
P26	PCIE_RXN	AI	PCIe receive lane – negative
P27	PCIE_CLKOUT_P	AO	PCIe transmit lane – positive
P28	PCIE_CLKOUT_N	AO	PCIe transmit lane – negative
P29	GND	GND	Ground
P30	GND	GND	Ground
P31	USB2_DP	AI, AO	USB HS data plus
P32	USB2_DM	AI, AO	USB HS data negative
P33	GND	GND	Ground
P34	GND	GND	Ground
P35	USB3_SS_TX_P	AO	SS USB transmit data positive
P36	USB3_SS_TX_N	AO	USB SS transmit data negative
P37	USB3_SS_RX_P	AI	USB SS receive data positive
P38	USB3_SS_RX_N	AI	USB SS receive data negative
P39	USB3_HS_DP	AI, AO	USB HS data positive
P40	USB3_HS_DM	AI, AO	USB HS data negative
P41	GND	GND	Ground
P42	GND	GND	Ground
P43	BISP_SPI1_SCK	I/O	GPIO44
P44	BISP_SPI1_SS0_N	I/O	GPIO45
P45	BISP_SPI1_MOSI	I/O	GPIO46
P46	BISP_SPI1_MISO	I/O	GPIO47
P47	GND	GND	Ground
P48	GND	GND	Ground
P49	12V	AI	12V Power Input
P50	12V	AI	12V Power Input

# SOM4019

IPQ4019 SOM module with dual band dual concurrent Wi-Fi

P51	GND	GND	Ground
P52	GND	GND	Ground
P53	SDIO_CD	I/O	GPIO22
P54	SDIO_DATA0	I/O	GPIO23
P55	SDIO_DATA1	I/O	GPIO24
P56	SDIO_DATA2	I/O	GPIO25
P57	SDIO_DATA3	I/O	GPIO26
P58	SDIO_CLK	O	GPIO27
P59	SDIO_CMD	I/O	GPIO28
P60	SDIO_DATA4	I/O	GPIO29
P61	SDIO_DATA5	I/O	GPIO30
P62	SDIO_DATA6	I/O	GPIO31
P63	SDIO_DATA7	I/O	GPIO32
P64	GND	GND	Ground
P65	GND	GND	Ground
P66	GND	GND	Ground
P67	BLSP_I2C0_SCK	I/O	GPIO20
P68	BLSP_I2C0_SDA	I/O	GPIO21
P69	BLSP_I2C1_SCK	I/O	GPIO34
P70	BLSP_I2C1_SDA	I/O	GPIO35
P71	DVDD33	O	3.3V Power Output
P72	GND	GND	Ground
P73	UART0_RXD	I	GPIO16
P74	UART1_RXD	I/O	GPIO9
P75	UART0_TXD	O	GPIO17
P76	UART1_TXD	O	GPIO8
P77	GND	GND	Ground
P78	GND	GND	Ground
P79	WPS_SW_GPIO18	I	GPIO18
P80	CHIP_PWD_L	I	Chip power-on reset
P81	GND	GND	Ground
P82	GND	GND	Ground
P83	GPIO10	I/O	GPIO10
P84	GPIO11	I/O	GPIO11
P85	GPIO36	O	GPIO36
P86	WLAN_ACTIVE	O	GPIO37/Boot

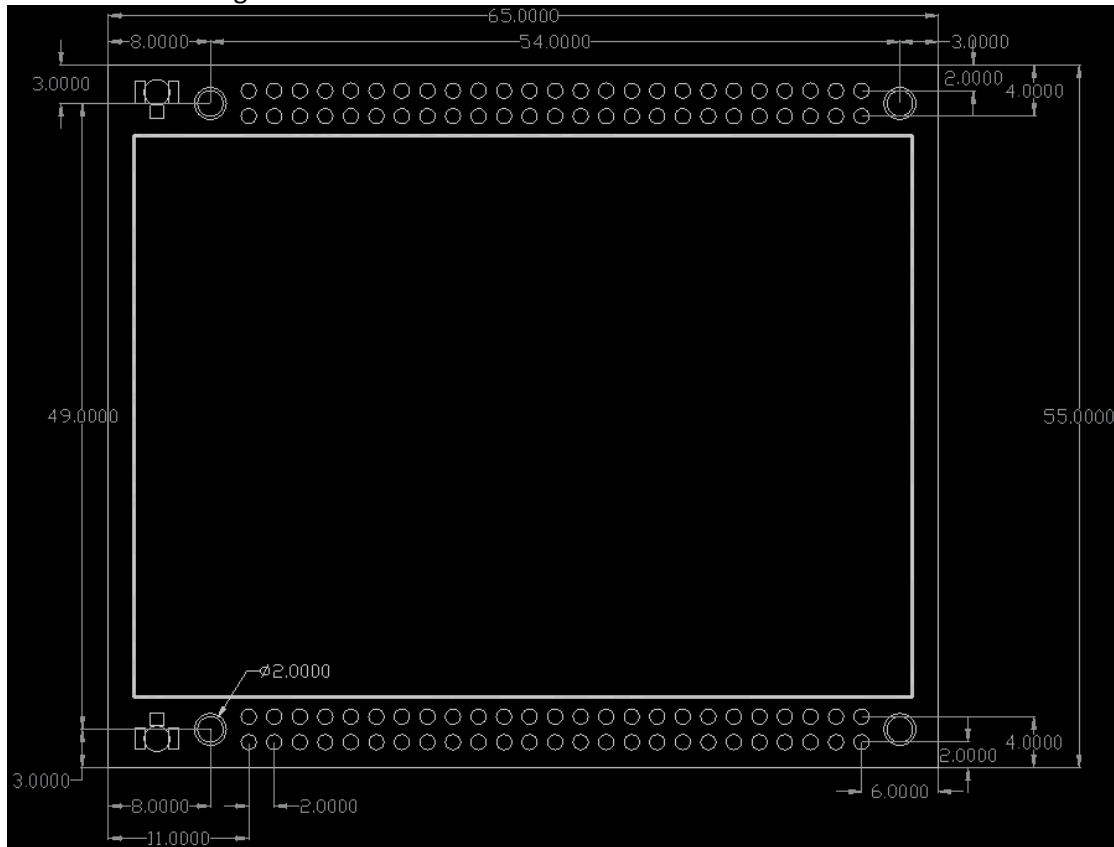
## SOM4019

IPQ4019 SOM module with dual band dual concurrent Wi-Fi

P87	PCIE_RST_N	O	GPIO38
P88	PCIE_CLK_REQ_N	I/O	GPIO39
P89	PCIE_WAKE_L	I/O	GPIO40
P90	GPIO42	I	GPIO42
P91	GPIO43	I	GPIO43
P92	GPIO48	O	GPIO48
P93	GPIO49	I/O	GPIO49
P94	GPIO50	I/O	GPIO50
P95	PCIE_WIFI_STRN_LED	O	GPIO51/BOOT
P96	QPIC_PAD_TE	I/O	GPIO52
P97	P3_1000_LED	I/O	Parallel LED output for 1000BASE-T of PHY3
P98	P4_1000_LED	I/O	Parallel LED output for 1000BASE-T or 1000BASE-X of PHY4
P99	GND	GND	Ground
P100	GND	GND	Ground

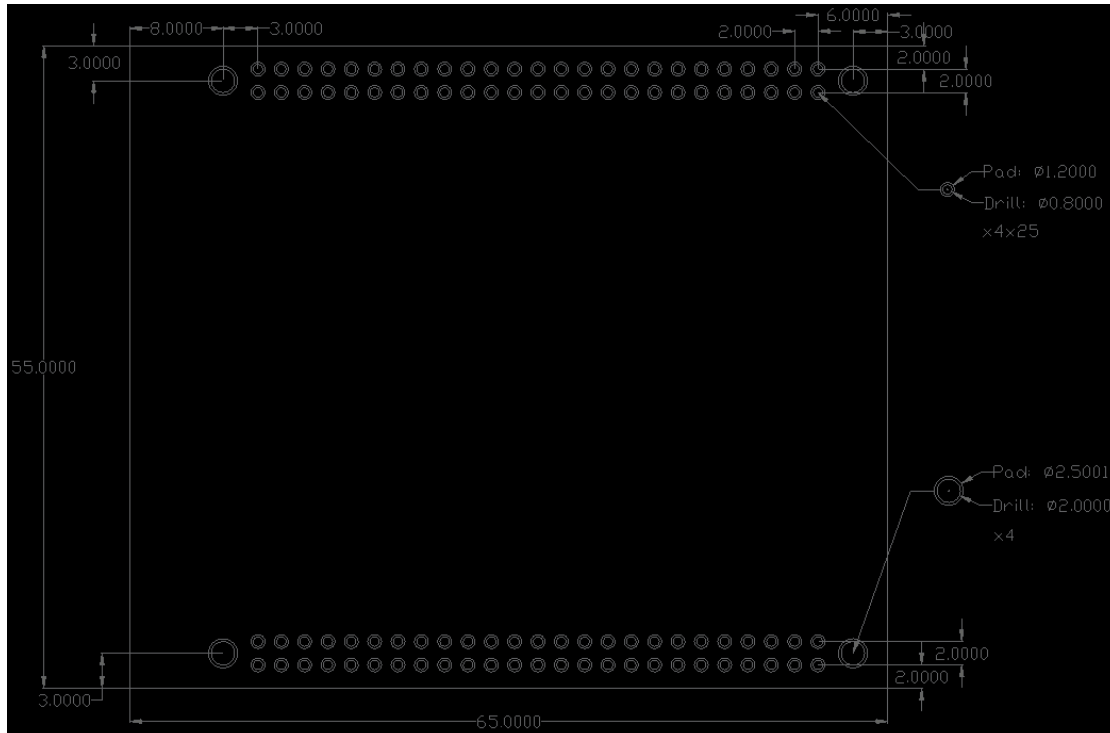
## Mechanical characteristics

### Mechanical drawing



## SOM4019

IPQ4019 SOM module with dual band dual concurrent Wi-Fi



### Development with SOM module

SOM4019 module is easy to implement to your design. User only reserve commonly used pin headers as board-to-board connector to have SOM module integrated to your system. You may run the main program in SOM module while regarding the IO interface deployed in the bottom board. When designing with SOM4019, carefully follow the pin definition above for the power & interfaces connections. The following is SOM4019 together with a bottom board for reference.

