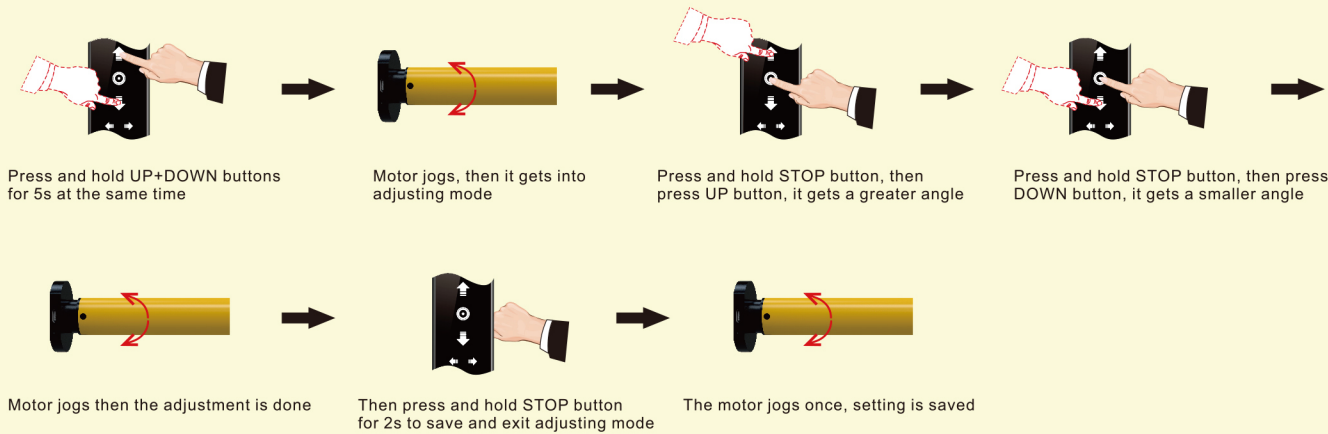
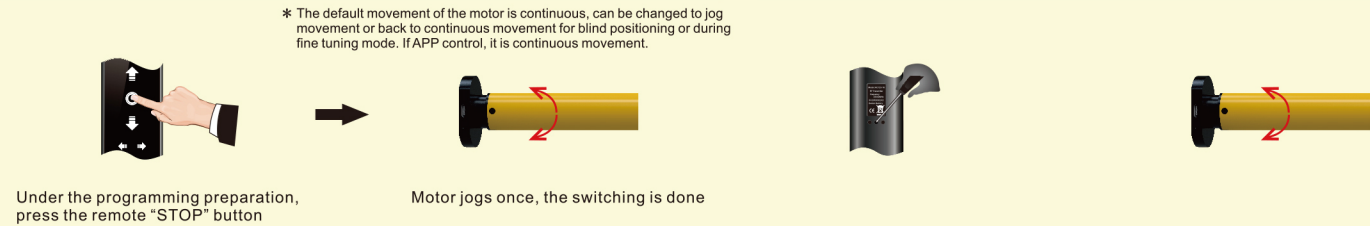


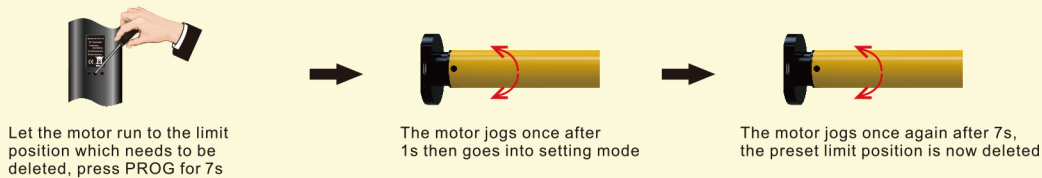
8.Tilt angle adjustment (Special for Zebra blinds, Shangri-la blinds etc.)



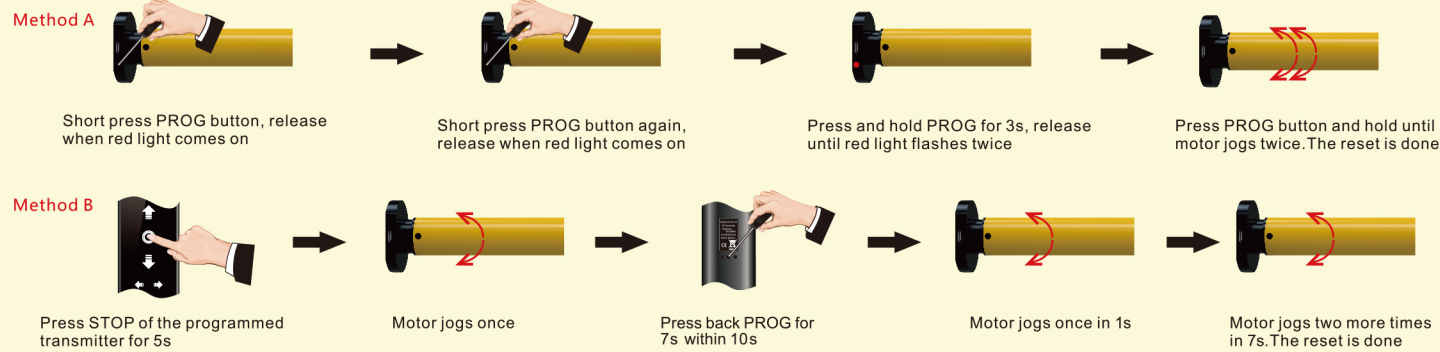
9.Jog movement & Continuous movement switching



11.Delete the limit position



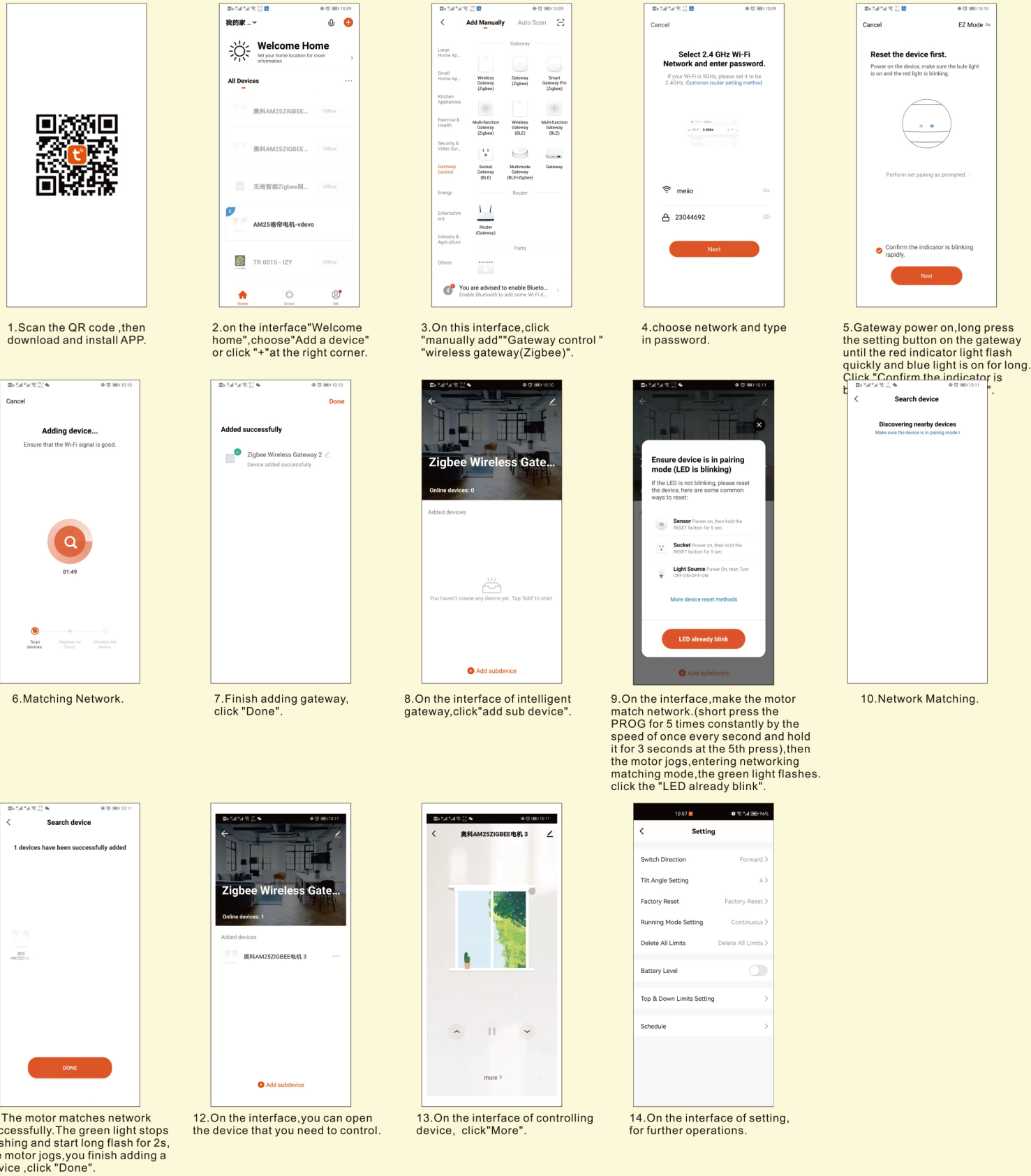
12.Reset motor * Make sure the interval between every actions less than 1s



13.Supplemental Instruction

- Max. 6 limit stop positions. (Upper limit/ Lower limit and 4 intermediate limit positions)
 - When the first limit position is the up limit position, all other limit positions can only below this position; the same thing, when the first limit position is the down limit position, all other limit positions can only be set above this position. can't be delete
 - Every limit position can be fine-turned or deleted separately (the first limit position can only be fine-tuned but can't be deleted separately. It can be deleted when delete all memories)
 - Under the jog mode, short press the up or down button, motor jogs once. Press the up or down button for more than 1s, and the engine moves to the limit positions.
 - Under the continuous move mode, quickly press the up or down button twice on the transmitter, and the motor will go directly to the up or down limit stop position without stopping at the middle limit position.
 - The light is red when charging and will turn to green when fully charged.
 - The motor will stop when the voltage is under 6.8V, and start working at 6.9V; motor moves under 7.0V, the red light will flesh(the working voltage)
- Battery shortage alarm:
The red-light flashes when the battery capacity is below 7.0V, yet it is still in continuous move mode.
The motor will step into jog mode when the battery capacity is below 6.8V, which means you must charge the engine.
- h. The motor needs to unlock in a different direction when it is blocked; Need to change the jog mentioned direction if the direction is the same as the jog direction.
When the motor is blocked, it needs to be unlocked in reverse, and if it is in the same direction as the shaking, change the direction of the shaking prompt
- I. The charge cable needs to have the data transfer function.
Motor charging needs to use TYPE-C charging cable with data transmission function.

14.APP instructions



Trouble Shooting

Item	Problem	Matter	Shooting
1	The motor doesn't work and no any move	A. Power is cut off B. Shortage voltage protection C.Incorrect installation leads to motor sticking	A. Switch it on by button B. Start the motor after charging it for 6 hours C.Check and make sure all parts are installed properly
2	The motor stops suddenly during operation	A.Shortage voltage protection B.Protect the motor when encounter obstacle	A.The motor will resume to work after being charged B.Check if there is something stuck or overloading