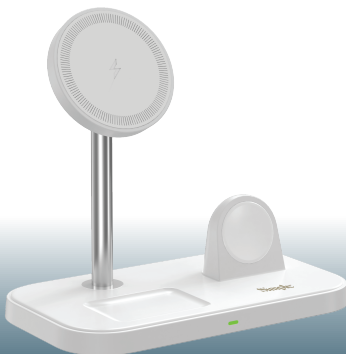


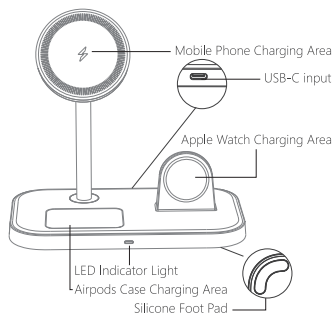
3 in 1 WIRELESS CHARGE STAND

USER MANUAL



Simple

PRODUCT DIAGRAM



PHONE OUTPUT	SMART WATCH OUTPUT
15W MAX	3W MAX
EARBUD OUTPUT	MAX OUTPUT
5W MAX	23W MAX

Thank you for choosing our Wireless Charging Station, please read this manual carefully and keep it properly before you use it.

PRODUCT SPECS

Product name: 3 in 1 Wireless Charge Stand
Model#: 802962
Interface: Type-C
Input: 9V/3A, 12V/2.25A
Phone Output: 5W/7.5W/10W/15W Max
Material: PC+ABS+Zinc alloy
Magnetic Load-bearing: 1100g
Size: 157x90x123.8mm

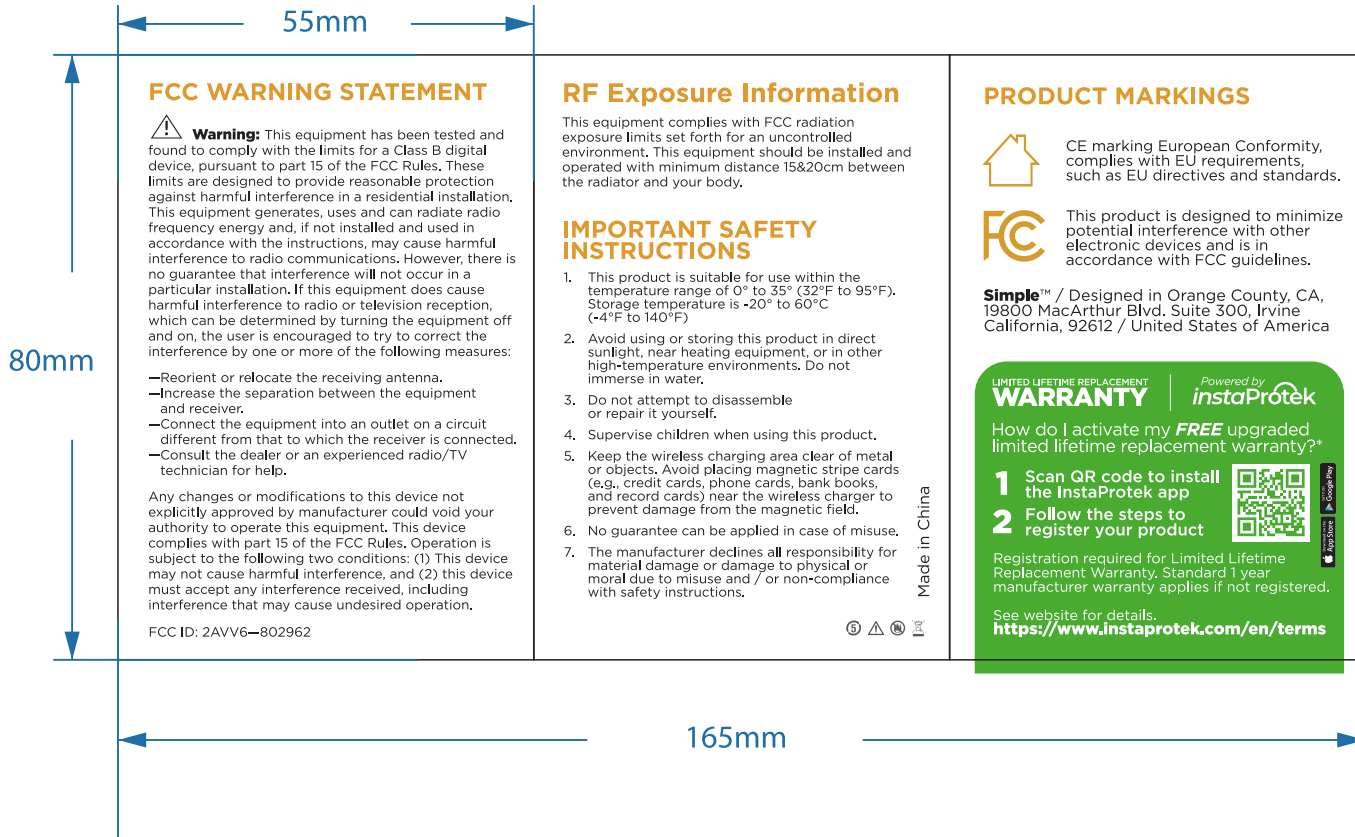
Weight: 260g
Supports: iPhone 12/13/14, AirPods 2/3/Pro/Pro 2, Apple Watch 3-8/SE/Ultra, and Qi standard wireless charging equipment

WHAT'S IN THE BOX

1x - Wireless charger 1x - User manual
1x - 3ft Charging cable

INSTRUCTIONS

1. Connect the USB-C end of the charging cable to a wall charger (sold separately) and the USB-C end to the back of the charging stand. For watch charging: Place the watch in the designated charging area, and the watch will automatically secure it for charging. (The watch will audibly click to indicate successful charging initiation.)
2. Place the mobile phone in the transmitting area, ensuring that the receiving area of the phone aligns with the wireless charger's transmitting area, typically located in the middle of the phone. The product's green light will remain illuminated during this process.
3. Position the wireless-enabled earbuds case in the wireless charging area, aligning the charging surface of the case with the product's transmitting area. The product's blue light will remain illuminated during this process.



FCC WARNING STATEMENT

Warning: This equipment has been tested and found to comply with the limits for a Class B digital device, pursuant to part 15 of the FCC Rules. These limits are designed to provide reasonable protection against harmful interference in a residential installation. This equipment generates, uses and can radiate radio frequency energy and, if not installed and used in accordance with the instructions, may cause harmful interference to radio communications. However, there is no guarantee that interference will not occur in a particular installation. If this equipment does cause harmful interference to radio or television reception, which can be determined by turning the equipment off and on, the user is encouraged to try to correct the interference by one or more of the following measures:

- Reorient or relocate the receiving antenna.
- Increase the separation between the equipment and receiver.
- Connect the equipment into an outlet on a circuit different from that to which the receiver is connected.
- Consult the dealer or an experienced radio/TV technician for help.

Any changes or modifications to this device not explicitly approved by manufacturer could void your authority to operate this equipment. This device complies with part 15 of the FCC Rules. Operation is subject to the following two conditions: (1) This device may not cause harmful interference, and (2) this device must accept any interference received, including interference that may cause undesired operation.

FCC ID: 2AVV6-802962

RF Exposure Information

This equipment complies with FCC radiation exposure limits set forth for an uncontrolled environment. This equipment should be installed and operated with minimum distance 15&20cm between the radiator and your body.

IMPORTANT SAFETY INSTRUCTIONS

1. This product is suitable for use within the temperature range of 0° to 35° (32°F to 95°F). Storage temperature is -20° to 60°C (-4°F to 140°F)
2. Avoid using or storing this product in direct sunlight, near heating equipment, or in other high-temperature environments. Do not immerse in water.
3. Do not attempt to disassemble or repair it yourself.
4. Supervise children when using this product.
5. Keep the wireless charging area clear of metal or objects. Avoid placing magnetic stripe cards (e.g., credit cards, phone cards, bank books, and record cards) near the wireless charger to prevent damage from the magnetic field.
6. No guarantee can be applied in case of misuse.
7. The manufacturer declines all responsibility for material damage or damage to physical or moral due to misuse and / or non-compliance with safety instructions.

Made in China



PRODUCT MARKINGS



CE marking European Conformity, complies with EU requirements, such as EU directives and standards.



This product is designed to minimize potential interference with other electronic devices and is in accordance with FCC guidelines.

Simple™ / Designed in Orange County, CA, 19800 MacArthur Blvd, Suite 300, Irvine California, 92612 / United States of America

LIMITED LIFETIME REPLACEMENT
WARRANTY

Powered by
instaProtek

How do I activate my **FREE** upgraded limited lifetime replacement warranty?*

- 1 Scan QR code to install the InstaProtek app
- 2 Follow the steps to register your product



Registration required for Limited Lifetime Replacement Warranty. Standard 1 year manufacturer warranty applies if not registered.

See website for details.
<https://www.instaProtek.com/en/terms>