

2.4G Wireless Mouse Manual

RATON INNOBO OPTICO INALAMBRICO 2,4GHZ

Especificaciones Ratón

Botones: izquierdo, derecho, central

Resolución: 800 ~ 1600 dpi

Potencia Entrada 3V / 2*AAA

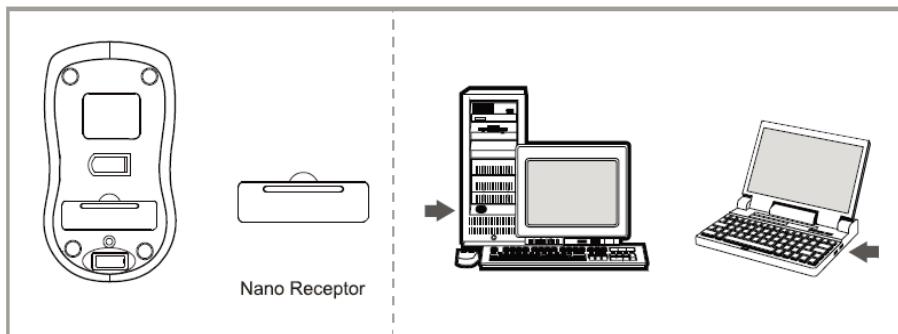
Consumo Energía: 7mA

Requerimientos del Sistema

IBM PC, Laptop o compatible

Puerto USB disponible

Microsoft Windows 2000/XP/VISTA/7/8/10



Instalación:

1. Conecte el Nano Receptor en el Puerto USB de su equipo.
2. Inserte las pilas en el compartimento adecuado del ratón y del teclado.
3. Mueva el ratón para poder conectarlo al receptor.

Precaución: Antes de iniciar la conexión del ratón es necesario mantener ratón a una distancia de menos de 2 metros del receptor para iniciar el proceso de conexión.

Problemas

1. Revise la conexión del Nano receptor: intente introducirlo en otro Puerto USB del equipo.
2. Sin conexión entre el ratón nano receptor. Re inserte el nano receptor.
Saque las pilas tanto del ratón y vuelva a colocarlas.

This device complies with part 15 of the FCC Rules. Operation is subject to the following two conditions: (1) this device may not cause harmful interference, and (2) this device must accept any Interference received, including interference that may cause undesired operation.

NOTE: This equipment has been tested and found to comply with the limits for a Class B digital device, pursuant to Part 15 of the FCC Rules. These limits are designed to provide reasonable protection against harmful interference in a residential installation. This equipment generates, uses and can radiate radio frequency energy and, if not installed and used in accordance with The instructions, may cause harmful interference to radio communications. However, there is no guarantee that interference will not occur in a particular installation. If this equipment does cause harmful interference to radio or television reception, which can be determined by turning the equipment off and on, the user is encouraged to try to correct the interference by one or more of the following measures: -- Reorient or relocate the receiving antenna. -- Increase the separation between the equipment and receiver. -- Connect the equipment into an outlet on a circuit different from that to which the receiver is connected. -- Consult the dealer or an experienced radio/TV technician for help.

Warning: Changes or modifications to this unit not expressly approved by the party responsible for compliance could void the use's authority to operate the equipment The device has been evaluated to meet general RF exposure requirement.