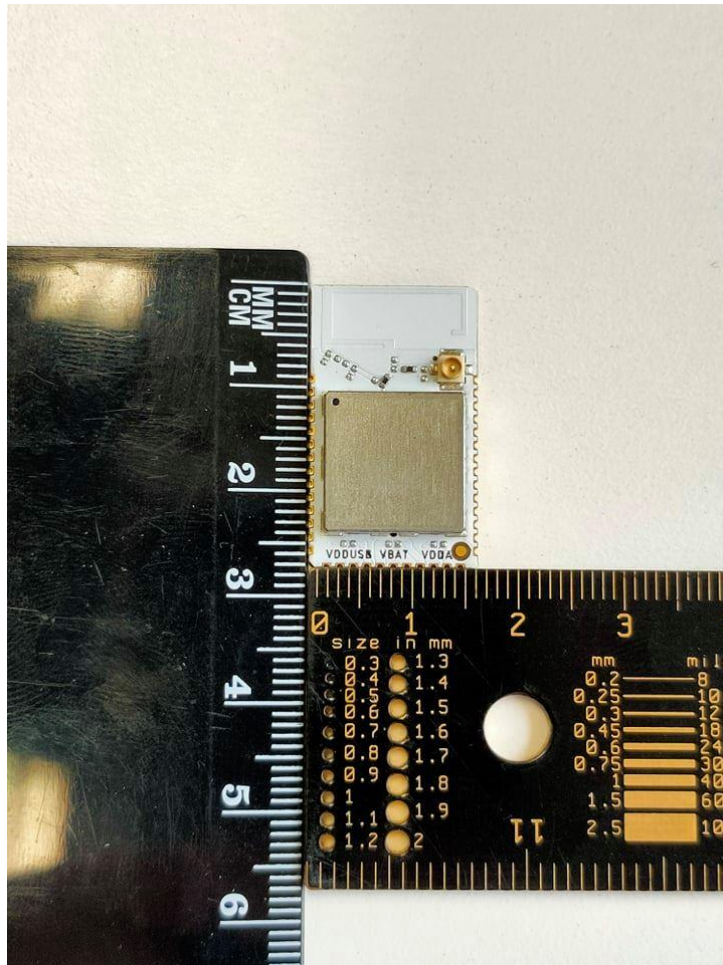


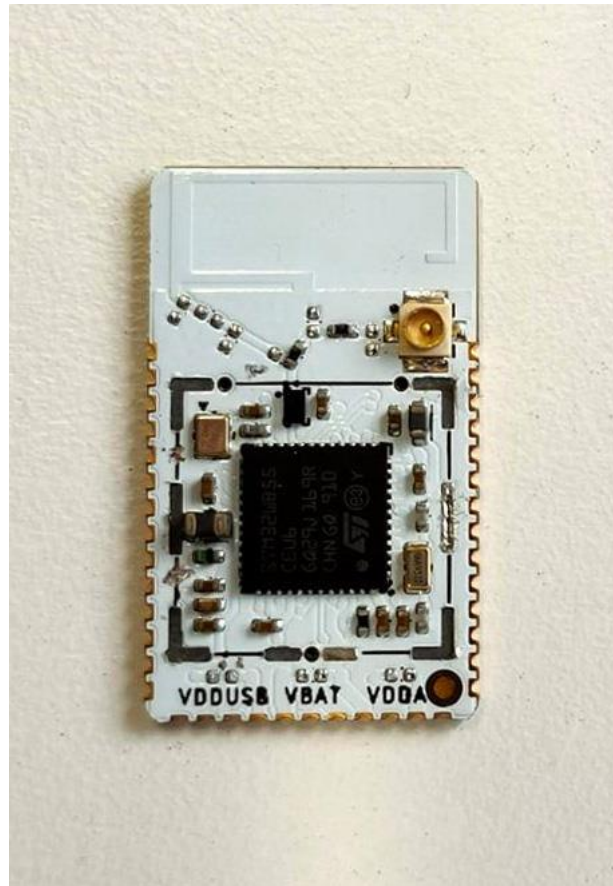
SHARKY with PCB antenna– (MDX-STWBP-R01) – Top View



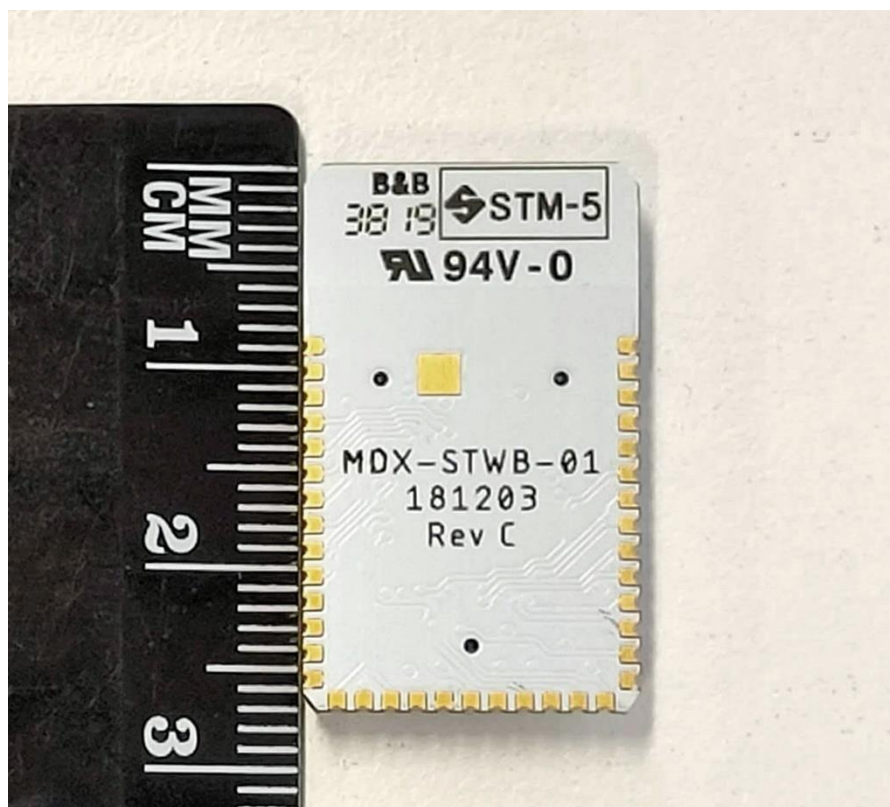
SHARKY with PCB antenna – (MDX-STWBP-R01) – Top View without shield



SHARKY with U.FL connector for external antenna– (MDX-STWBU-R01) – Top View



SHARKY with U.FL connector for external antenna– (MDX-STWBU-R01) – Top View without shield



SHARKY (both version MDX-STWBP-R01 and MDX-STWBU-R01) –Bottom view