



CC2400

User Manual



Intel® Celeron® 24" All-In-One Computer
with Windows™ 11

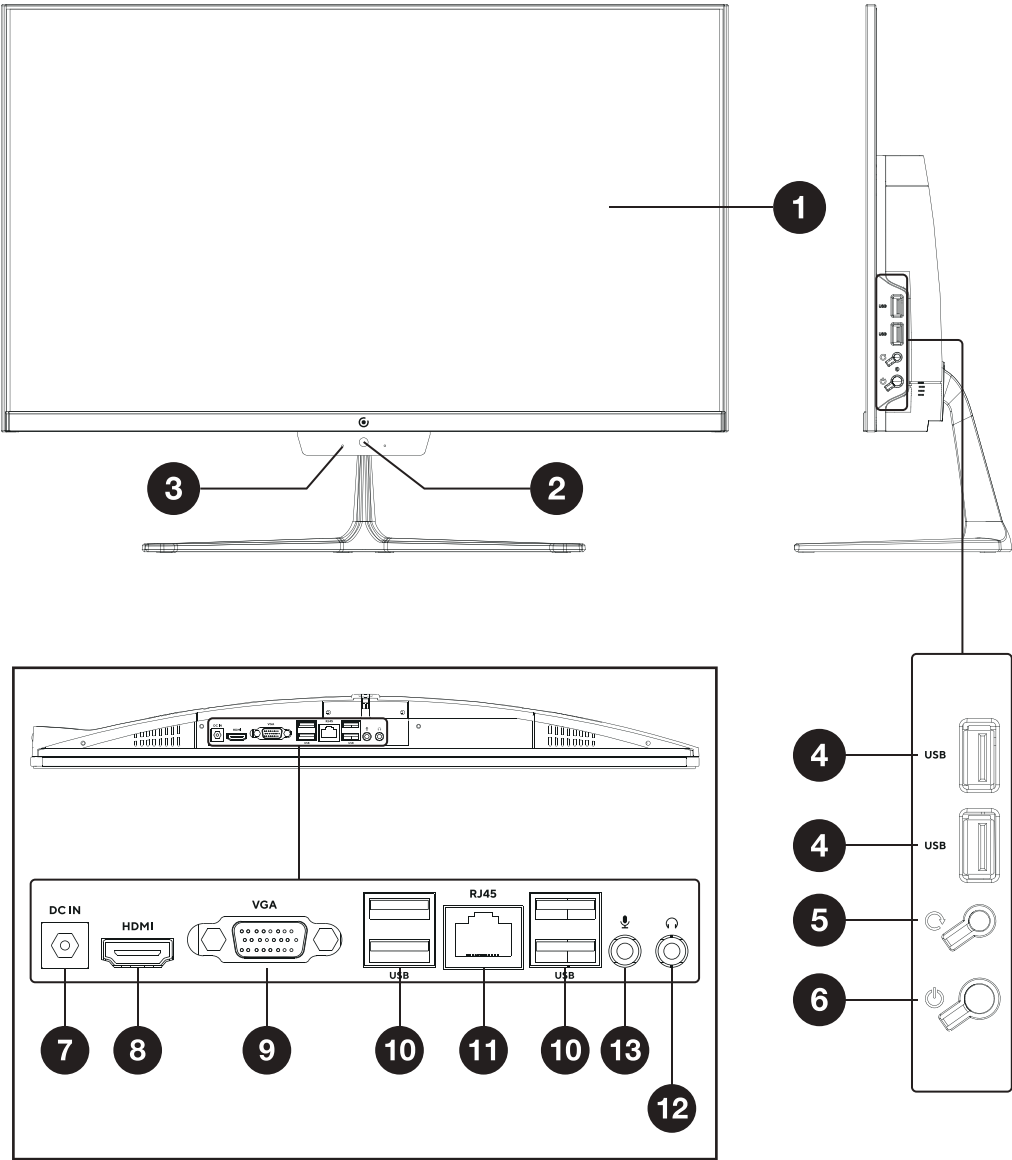
Table of Contents

| | |
|--|----|
| Read Before Use | 3 |
| Device Overview | 4 |
| In the Box | 5 |
| Getting Started | 6 |
| Connecting to a Wi-Fi Network | 9 |
| Connecting to a Bluetooth Device | 11 |
| User Accounts | 13 |
| Sleep, Shut Down, and Restarting Your Device | 13 |
| Search | 14 |
| Task View | 14 |
| Multiple Desktops | 15 |
| Snap Windows | 16 |
| Action Center | 17 |
| Notifications | 17 |
| The New Microsoft Edge™ Browser | 18 |
| Downloading Applications | 18 |
| Settings | 19 |
| Factory Reset | 20 |
| Specifications | 21 |
| Need Help? | 22 |
| Warranty Information | 23 |

Read Before Use

1. This All-In-One Computer works best in non-tropical areas below 6560 feet (2000 meters).
2. Protect your device from impact from bumps and falls.
3. Do not use this device for extended periods of time in environments that are either too cold, too hot, too humid or too dusty. Do not expose the device to direct sunlight.
4. Avoid using this device in strong magnetic and static environments as much as possible.
5. If the device comes into contact with water or any other liquid, power it off immediately and wait for it to dry completely before turning it on again.
6. Do not clean the device with any cleaning products containing chemicals, to avoid damage caused by corrosion and dampness. When cleaning is necessary, use a dry, soft cloth.
7. The company shall not be held responsible for the loss or deletion of material inside the device caused by abnormal software and hardware operation, maintenance or any other accidents.
8. Please regularly back up important data and files to avoid loss.
9. Please do not disassemble the device by yourself; doing so will void the warranty.

Device Overview



Device Overview

1. **Display Screen**
2. **Camera**
3. **Microphone**
4. **USB 2.0 Inputs:** Connect external USB devices.
5. **Restart Button:** Use to restart your device.
6. **Power Button:** Turn your device on or off. Use to set your device to Sleep Mode or to wake it from Sleep Mode.
7. **Charging Port:** 12V/5A charger.
8. **HDMI Port:** Connect your computer to a second monitor, TV, or HDMI-enabled devices.
9. **VGA**
10. **USB 3.0 Inputs:** Connect external USB devices.
11. **RJ45 port**
12. **Headphone Jack:** Transmit audio signals to speakers or headphones.
13. **Microphone:** Transmits audio signals.

In the Box

All-in-One PC



AC Adapter



Warranty Card



Wireless Keyboard and Mouse



1x AAA + 1x AA Batteries



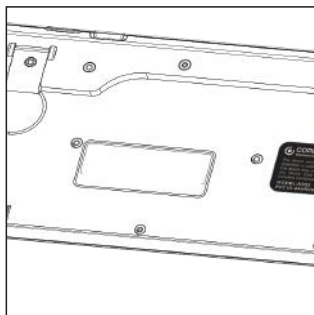
Getting Started

Before configuring your computer settings, locate the included AAA battery and AA battery in the package.

Adding AAA Battery to the Keyboard

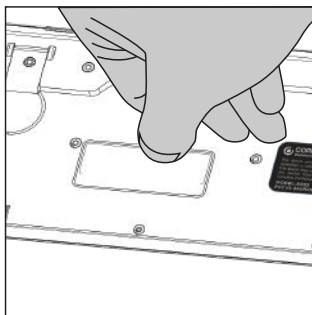
Step 1

Remove the battery panel cover with your fingernail or flat object.



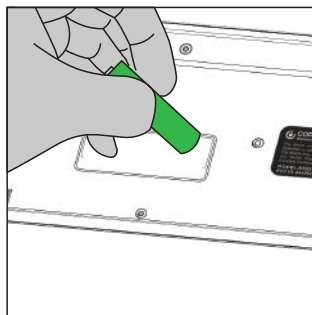
Step 2

Insert your fingernail or tool into the tab and push it away to release the battery panel. Once unhitched, pull the panel towards you.



Step 3

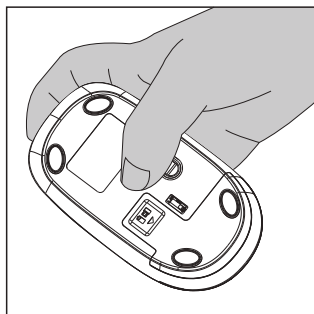
Add battery in position shown below.



Adding AA Battery to the Mouse

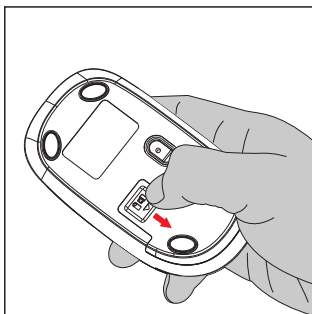
Step 1

Remove the battery panel cover with your fingernail or flat object.



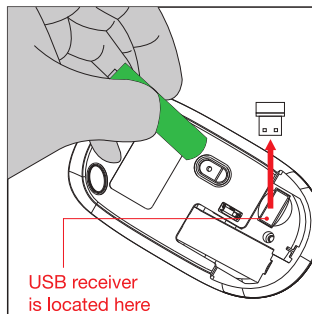
Step 2

Insert your fingernail or tool into the tab and push it away to release the battery panel. Once unhitched, pull the panel towards you.



Step 3

Add battery in position shown below.



Getting Started

Wireless Keyboard and Mouse Troubleshooting

Replace Battery if Needed:

If the keyboard's light flashes red, or if the mouse's movement is not smooth, it may be time to replace the batteries with new ones (sold separately).

Pairing Instructions

If the keyboard and mouse are not working:

Step 1: Unplug the USB receiver from your computer.

Step 2: Remove the batteries from both the keyboard and mouse.

Step 3: Install fresh batteries into the keyboard.

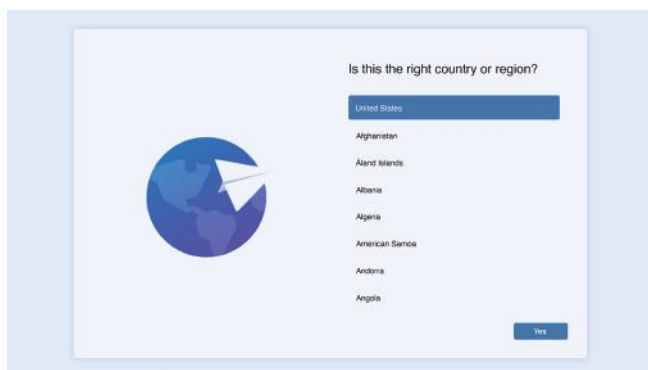
Step 4: Insert the USB receiver into a USB port on your computer.

Step 5: Turn on the switch on the keyboard then press and hold ESC + Q on the keyboard until the red light blinks to initiate automatic code alignment and lock.

Note: The mouse does not require re-pairing.

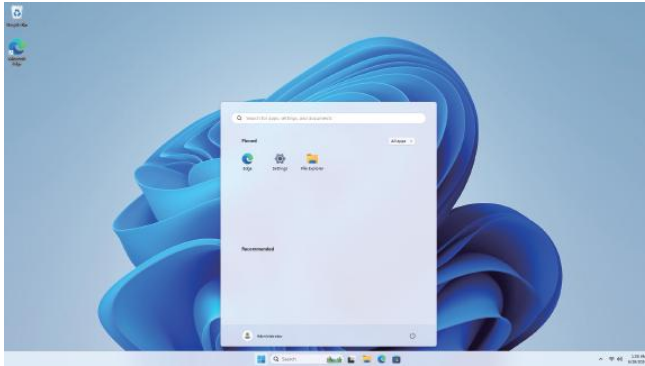
Getting Started

1. Use the included AC adapter to connect your computer to a power source.
2. Turn your computer on by pressing and holding the power key for two seconds.
3. When booting up for the first time, you will be asked to configure your new computer. Complete the steps on screen to get started.

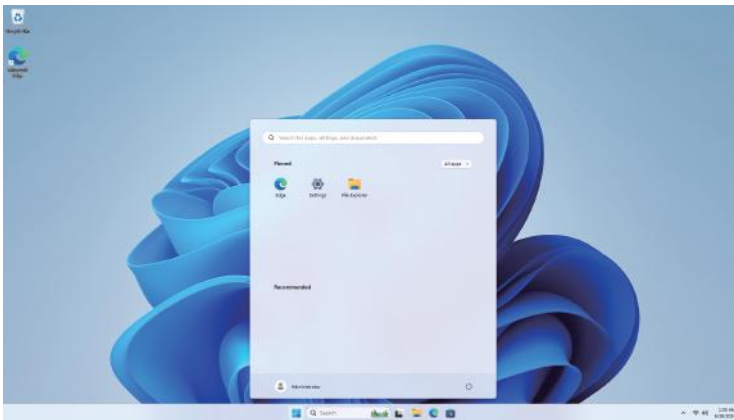


Getting Started



4. When the above settings are completed, the system will continue to complete the final steps of initialization. During this period, please ensure sufficient power and do not shut down the computer (connecting to a power supply is recommended). The following interface appears, indicating the completion of initialization.

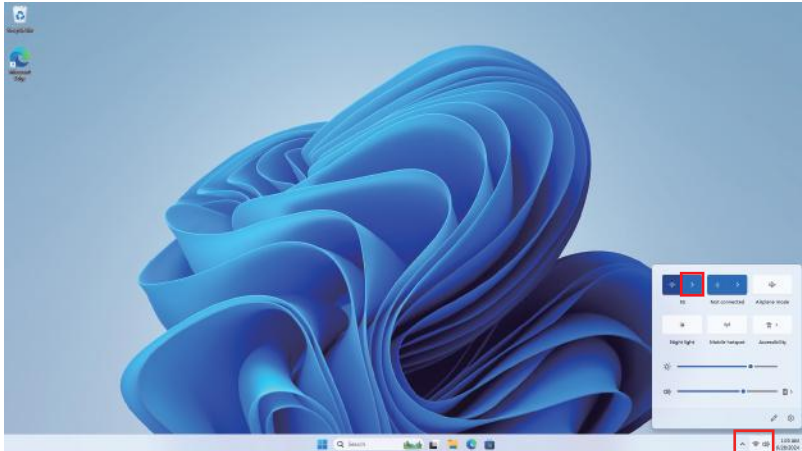


5. When using Windows™ 11 for the first time, please read the [Get Started] guide in the Start menu. It can help you master various features of Windows™ 11 quickly.

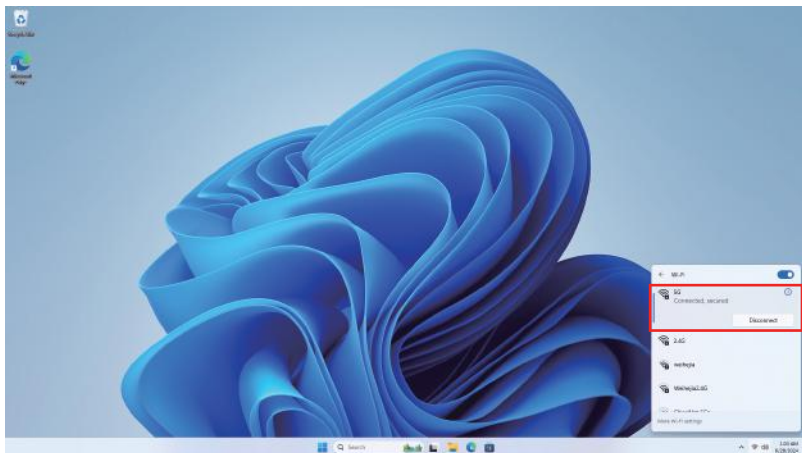


Connecting to a Wi-Fi Network

1. Click the [Network] button  in the taskbar in the bottom right of the desktop, and click the right arrow  in the pop-up menu.





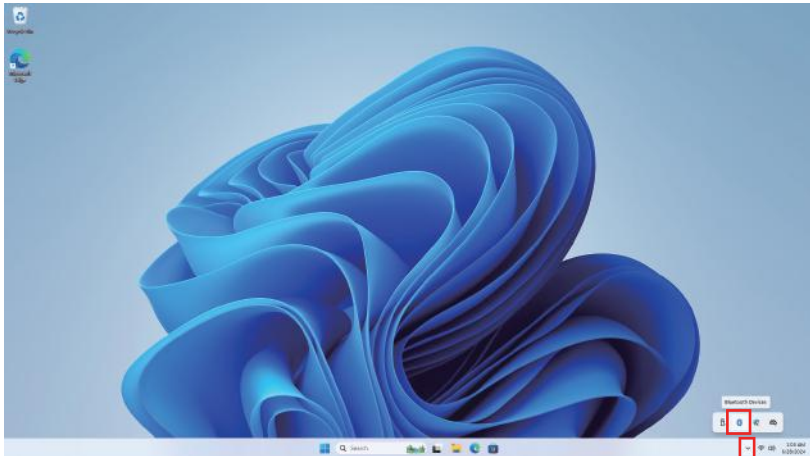
2. Scroll to find your Wi-Fi network from the list, and click [Connect].



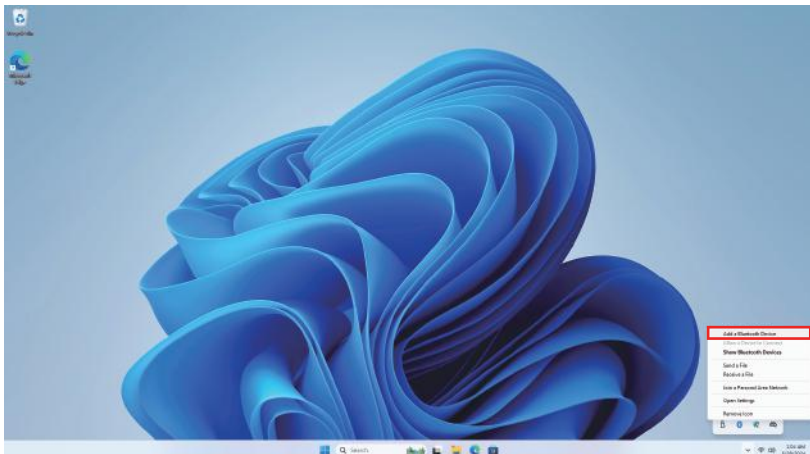
3. Enter the network security password if required, and click [Next].
4. Once the password is verified, the network will display as "Connected".

Connecting to a Bluetooth Device

1. At the bottom right of the desktop, click the arrow icon , and then the Bluetooth icon  will pop up.

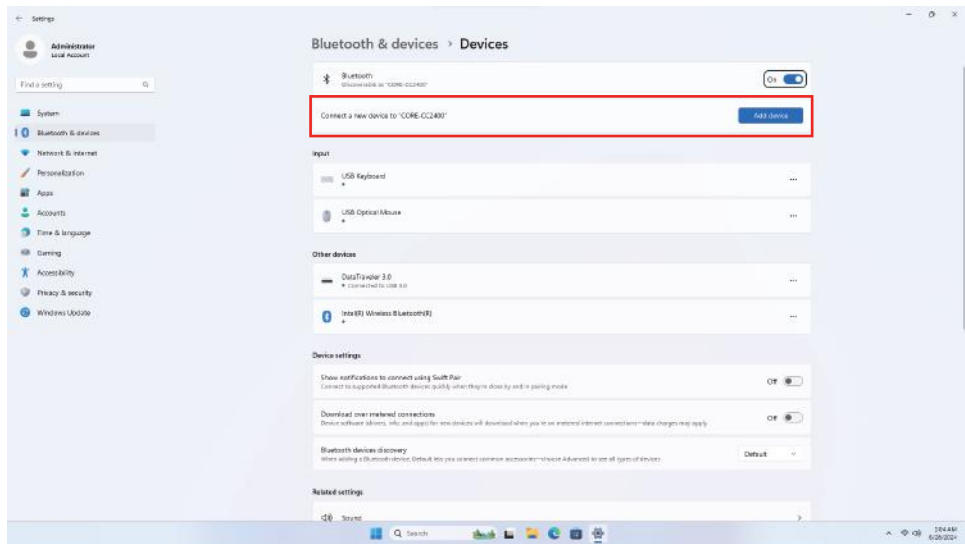


2. Right-click the Bluetooth icon to open the below menu, and click [Add a Bluetooth Device].

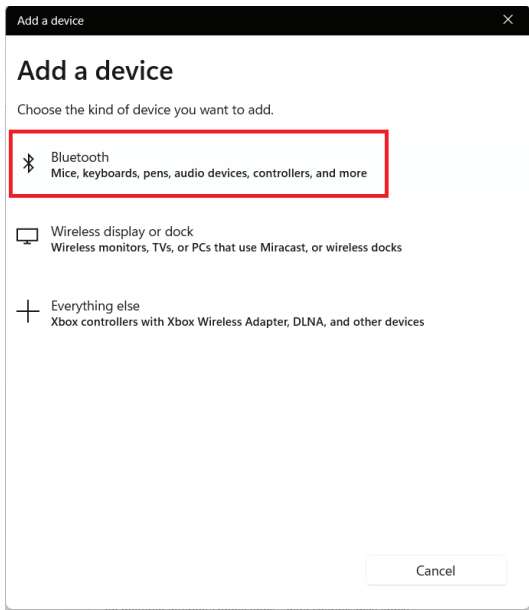


Connecting to a Bluetooth Device

3. In the pop-up settings page, click [Add device] on the right.

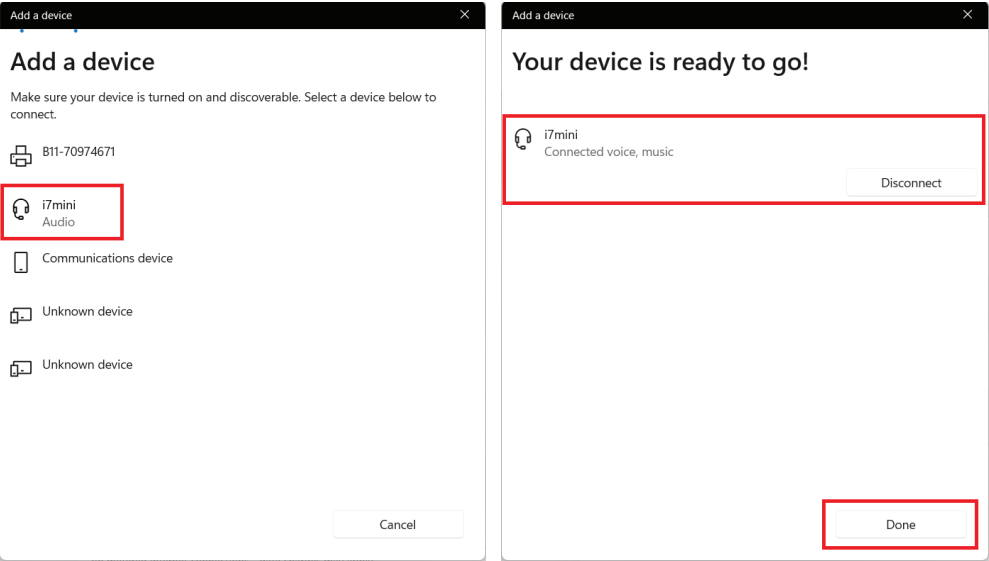


4. In the new pop-up window, select [Bluetooth].



Connecting to a Bluetooth Device

The system will then search for nearby Bluetooth devices. Select the Bluetooth device you wish to connect to when it appears on the list. If a pairing code is needed, enter it based on the onscreen prompts. When connected, click [Done] to finish.



User Accounts

Use your information to create a user account. You can use this account to create, modify or remove other accounts on this device.

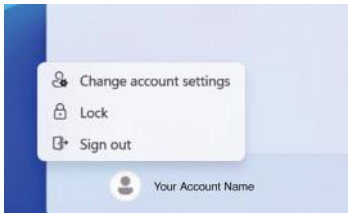
Choose whether you want to use a Microsoft™ account or a local account.

Microsoft™ Account

Use this account to sign into Windows™ and shop for apps in the Windows™ Store. All your files are also saved to OneDrive™ by default, allowing you to access them from any device.

Local Account

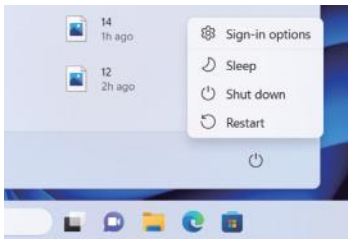
You can only use a local account on your computer and cannot connect to the cloud.



To add or modify accounts on your device, click on the [Start] icon, then click on the account icon found at the bottom left side of the window.

Sleep, Shut Down, and Restarting Your Device

Enter the [Start] menu from your desktop. On the bottom right side of the window, you will find the [Power] button.



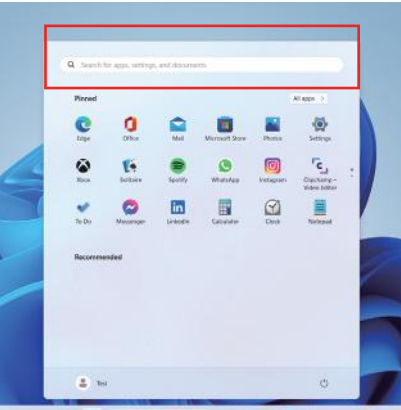
Sign-in options: Options for your account.

Sleep: Set your device to idle.

Shut Down: Turn off your device.

Restart: Your device will turn off, then automatically turn back on.

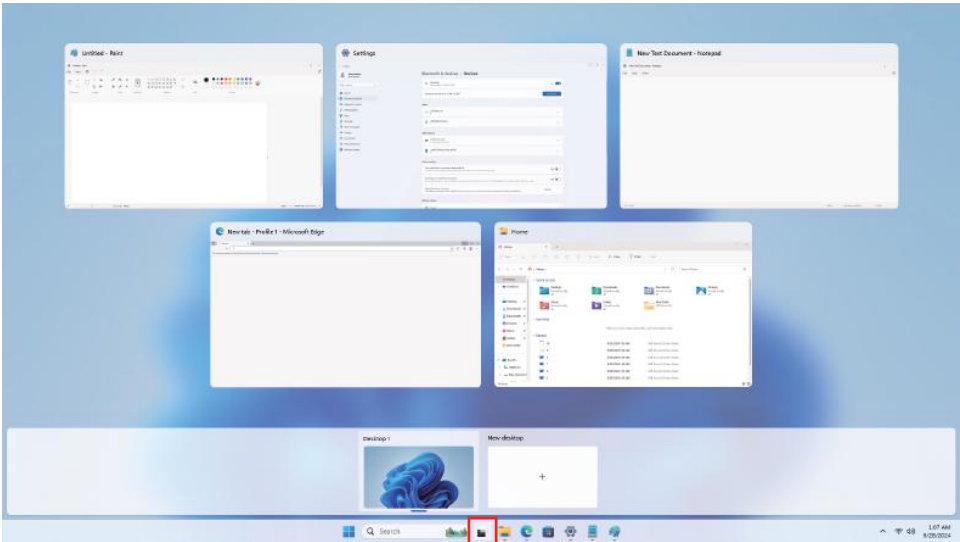
Search



Search across your device, your cloud storage on OneDrive, and across the Web at the same time. Simply open the Start menu and type in the search box - Windows™ search will do the rest. You can also open search directly from the taskbar; click [Search] and start typing.

Task View

If you have a lot of apps and programs open, there is a new Task View button so you can quickly switch between them. Click [Task View] to see all of your running apps and programs; select any item to open it.

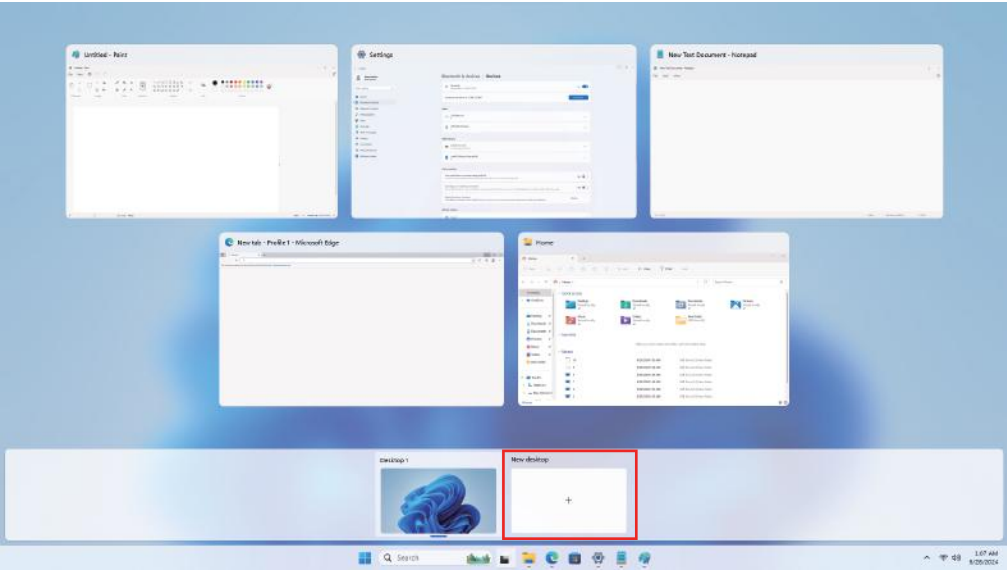


Multiple Desktops

If you're working on a lot of different projects or using different apps and programs, try adding a desktop. It'll keep things neatly organized for you. Or, create a desktop for the things you do at work and one for the things you do at home.

Select [Task View] from the taskbar, and then click [Add a desktop]. A thumbnail will show up at the bottom of the Task View page. Click the blank thumbnail to open a clean desktop.

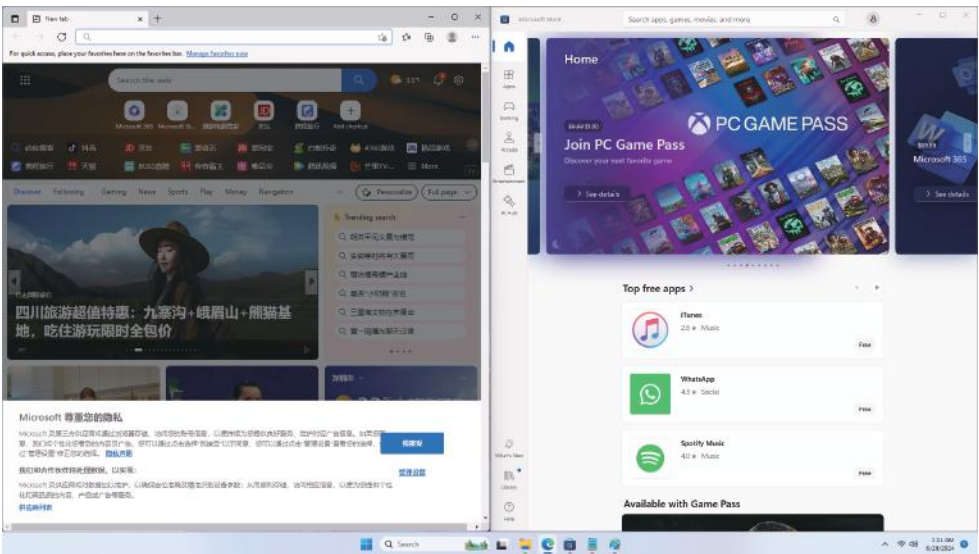
To switch between desktops, click [Task View] and then choose a desktop from the bottom of the page.



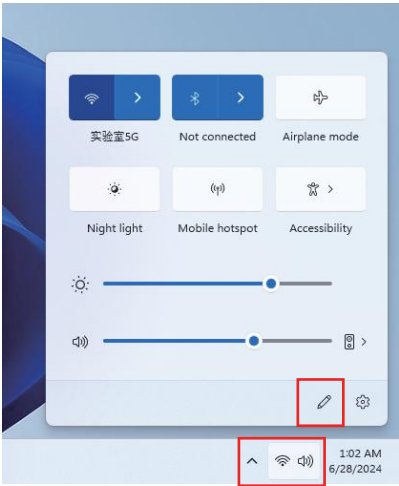
Snap Windows

Because all your apps and programs run in windows on the desktop, instead of modern apps from the Store being in their own space, you can no longer drag across the left edge of the screen to bring another app on screen and get a split view. Instead, you drag windows into the corners of the screen to get the familiar Snap view.

To snap, click and hold the top of the window and drag it to either the side or corner of the screen. You'll see a shadow of where the window will snap; release the window to snap it into place.



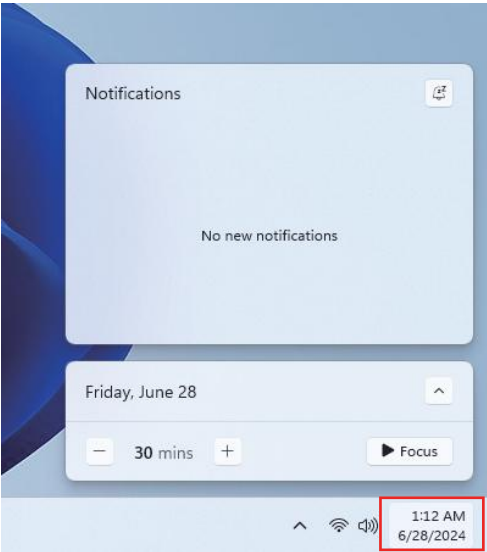
Action Center



Click the [Status Bar] in the lower right corner of the screen to display and set the current brightness, volume, Wi-Fi, Bluetooth, Cast and other functions.

Notifications

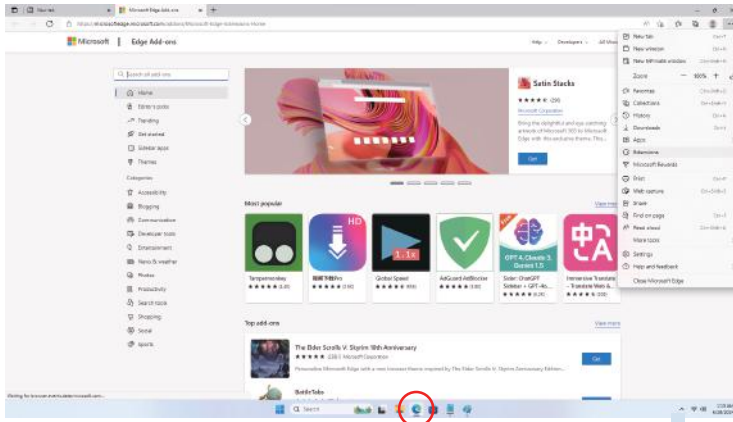
Click the time and notification bar in the lower right corner of the screen to display the current notification information and date/time.



The New Microsoft™ Edge Browser



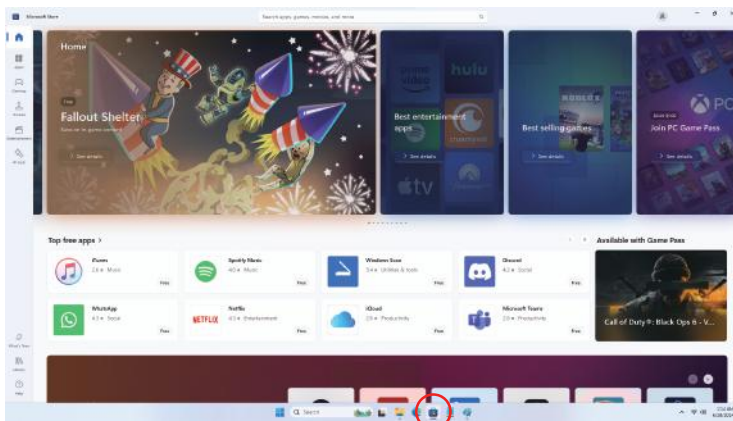
Enjoy the latest way of surfing the internet with the new Microsoft™ Edge browser. Stay put and save time by typing your search in the address bar. You'll get search suggestions, instant results from the web, and your browsing history, right away.



Downloading Applications



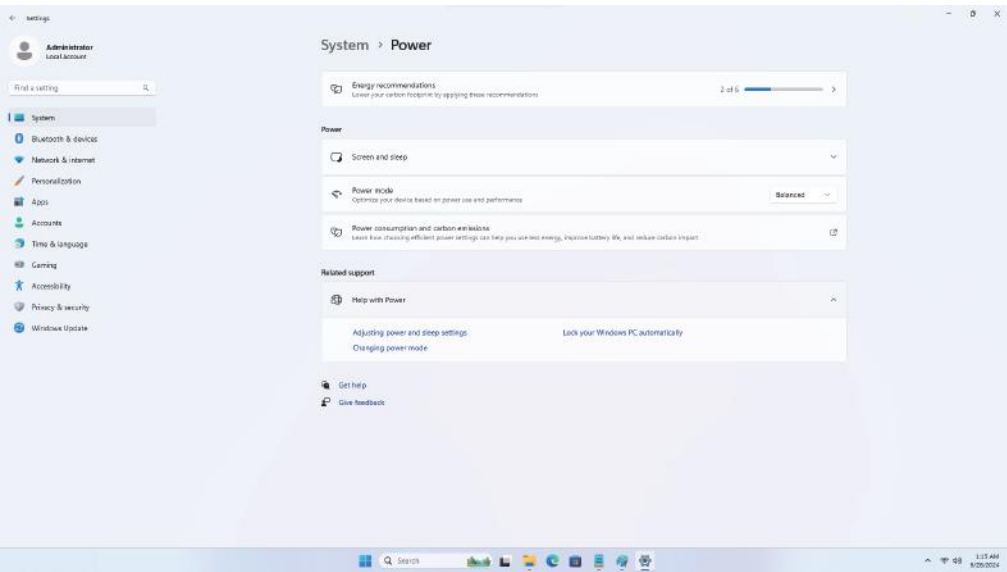
You can download more apps from the Microsoft™ Store found on the Desktop taskbar.



Note: You need a Microsoft™ account to be able to download apps. You can create an account by logging on to <https://account.microsoft.com/account>

Settings

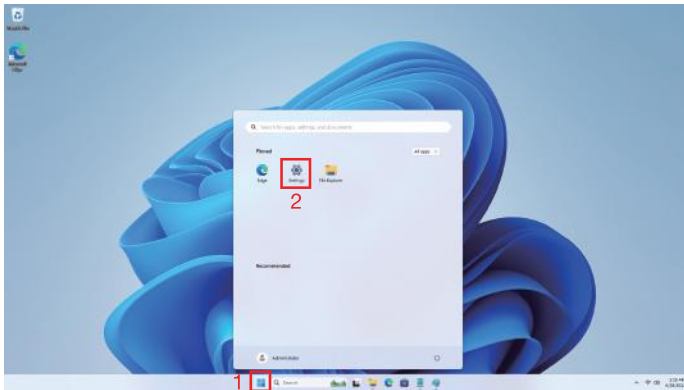
Windows™ 11 overhauled the Settings app, introducing a new sidebar interface, more colorful icons, better navigation, Bing integration for more accurate search results, and a modest optimization for darker modes.



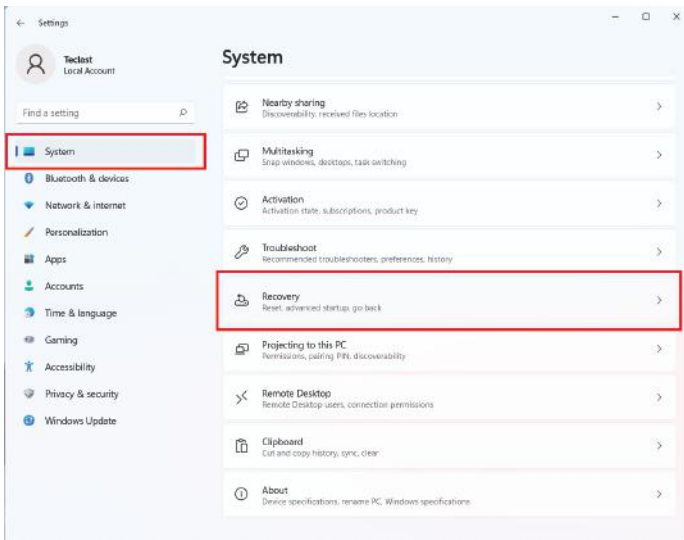
Factory Reset

For system recovery (factory reset), please follow the steps below.
Note: A factory reset will revert your computer to its original state.

1. Enter the [Start] menu and click [Settings].



2. Select [System], and click [Recovery] on the right;



3. Select [Reset PC], then follow the onscreen prompts.



Specifications

| | |
|-------------------------|--|
| Processor | Intel® Celeron® N5095A Processor |
| Operating System | Windows™ 11 |
| Storage | 4GB RAM, 128GB Storage |
| Display | 24” Screen (1920x1080 FHD IPS) |
| Network | Wi-Fi Ready: 2.4GHz/5Ghz 802.11 b/g/n/ac |
| Headphone Output | 3.5mm Headphone Jack |
| USB Ports | USB 3.0 x 4 / USB 2.0 x 2 |
| HDMI | HDMI Output |
| Bluetooth | Compatible with Bluetooth |
| Camera | 2.0 MP Front Camera |
| Speakers | 2x3 W Speakers |
| Charging | 12V = 5A |



Need Help?

For customer support regarding your device, please submit a request by emailing **support@dpaudiovideo.zendesk.com**. You will be provided a ticket number regarding your inquiry, which you can refer to when contacting us further.

You may also reach a Core Innovations customer service representative by calling **1-833-909-CORE (1-833-909-2673)**. We are available Monday - Friday, 9am - 5pm PST, except major holidays. Core Innovations strongly urges customers to email their inquiry prior to calling, as this will enable us to better assist you.

Please make sure to note the model number and a description of your inquiry.

Thank you for purchasing a Core Innovations product.

For information on recycling, please visit
<https://www.coreinnovationsinc.com/support/>

© 2025 Core Innovations. All rights reserved. Core Innovations is a trademark of DP Audio Video. Formatted capacity will be less. Windows, and OneDrive are registered trademarks of Microsoft Corp in the United States and other countries. Intel, the Intel logo, the Intel Inside logo, and Intel Celeron are trademarks of Intel Corporation or its subsidiaries. © 2025 Bluetooth SIG, Inc. All rights reserved. The Bluetooth trademarks—including the BLUETOOTH word mark, the figure mark (the runic “B” and oval design), and the combination mark (Bluetooth word mark and design)—are owned by the Bluetooth SIG. Wi-Fi is a registered trademark of the Wi-Fi Alliance. The Adopted Trademarks HDMI, HDMI High-Definition Multimedia Interface, and the HDMI Logo are trademarks or registered trademarks of HDMI Licensing Administrator, Inc. in the United States and other countries and used by Core Innovations under a permissions process granted to the manufacturer as an adopter. USB is used to solely describe the compatibility of our technology and in no way is intended to infringe on any intellectual property rights of any respective protected marks. This device complies with Part 15 of the FCC Rules. Operation is subject to the following two conditions: (1) this device may not cause harmful interference, and (2) this device must accept any interference received, including interference that may cause undesired operation. Core Innovations is not affiliated with Microsoft®. 90 day warranty from date of purchase, 1 year for parts & labor.

Warranty Information

Limited Warranty

Core Innovations (the "Company") warrants this new product purchased and contained in this package (the "Product") against defects in material or workmanship for 90 Days (Parts & Labor) and 1 Year (Limited) from the date of delivery. In order for the Company to honor this limited warranty, you must present a valid proof of purchase or delivery, as applicable (e.g. a receipt or delivery notice that also shows purchase) of this Product. IMPORTANT NOTE: The customer is encouraged to carefully inspect the Product upon receipt after purchase – especially prior to any assembly, disassembly, mounting, installation or utilizing a third-party product of any kind, such as a decorative or protective cover or case.

This warranty is void if the Company deems, in its discretion, that the Product may have been damaged when the packaging was opened, through modification, improper transport, improper storage, improper use, improper assembly or disassembly, exposure to adverse elements, mounting or other installation, end user negligence, water damage or tampering of the barcode of the Product. This warranty does not apply: (a) to cosmetic damage, including but not limited to screen damage, a cracked display, scratches, dents and broken ports; (b) to damage caused by accident, abuse, misuse, fire, water vapor exposure, excessive exposure to humidity, water or other liquid contact, earthquake or other external cause; (c) to defects caused by normal wear and tear or otherwise due to the normal aging of the product; (d) if any serial number has been removed or defaced from the product; or (e) to damage caused by installation or mounting, assembly or disassembly, use with a third party device, cable, protective or decorative cover/case, component or product that does not meet the Company's product specifications. This warranty is a limited warranty for repair of the Product or replacement of the Product with a new or refurbished product, subject to the conditions set forth herein.

The Company is not liable for consequential, indirect, incidental, special or punitive damages and the Company's total liability hereunder shall not exceed an amount greater than the retail purchase price of the product.

90 Days Parts & Labor

The Company warrants to you as the original retail purchaser of the Product, that should the Product have any warranted defect out of the packaging, under normal conditions, such defect(s) will be repaired or replaced with a new or refurbished part (at the Company's sole discretion) without charge, if the Product is submitted to the Company within a period of ninety (90) calendar days from the date of delivery of the Product. The customer is responsible for transportation cost and

Warranty Information

insurance charges (if applicable) to the Company and must be able to document a clear proof of delivery to the Company as well as proof of registered receipt by the Company. It is the customer's responsibility to retain original packaging or provide like packaging in order to facilitate the warranty repair or replacement process. The Company will incur no liability whatsoever to provide packaging for warranty items. Should the product be damaged en route to the Company due to insufficient or improper packaging or improper transport, the warranty may be voided. You must receive a return authorization number (RMA#) before sending the unit in for service. This warranty only applies to manufacturer defects, and the Product must be returned to the Company in its original condition.

1 Year Limited Parts

If determined to be covered under warranty, the one (1) year (from delivery) limited parts warranty gives the customer the option to return the Product to the Company for repair or replacement. The customer will be responsible for labor charges. This warranty does not cover any incidental or indirect costs incurred as a result of a defect in the Product, including any consequential, incidental or indirect damages.

FCC WARNING

This device complies with part 15 of the FCC Rules. Operation is subject to the following two conditions: (1) this device may not cause harmful interference, and (2) this device must accept any interference received, including interference that may cause undesired operation. Any changes or modifications not expressly approved by the party responsible for compliance could void the user's authority to operate the equipment. NOTE: This equipment has been tested and found to comply with the limits for a Class B digital device, pursuant to Part 15 of the FCC Rules. These limits are designed to provide reasonable protection against harmful interference in a residential installation. This equipment generates, uses and can radiate radio frequency energy and, if not installed and used in accordance with the instructions, may cause harmful interference to radio communications. However, there is no guarantee that interference will not occur in a particular installation. If this equipment does cause harmful interference to radio or television reception, which can be determined by turning the equipment off and on, the user is encouraged to try to correct the interference by one or more of the following measures:

- Reorient or relocate the receiving antenna.
- Increase the separation between the equipment and receiver
- Connect the equipment into an outlet on a circuit different from that to which the receiver is connected.
- Consult the dealer or an experienced radio/TV technician for help.

To maintain compliance with FCC's RF Exposure guidelines, this equipment should be installed and operated with a minimum distance of 20 cm between the radiator and your body. Use only the supplied antenna.

The PC apparatus contains the FCC ID:2AVRVK902 and FCC ID:2AVRVMQ3S



Core Innovations intends to make this manual accurate and complete. However, Core Innovations makes no claim that the information contained herein covers all details and conditions. The information in this document is subject to change without notice at any time. Core Innovations assumes no responsibility for accuracy or completeness of the information contained in this manual.

FCC WARNING for 24" All-in-One Desktop PC, Model: CC2400

This device complies with part 15 of the FCC Rules. Operation is subject to the following two conditions: (1) this device may not cause harmful interference, and (2) this device must accept any interference received, including interference that may cause undesired operation. Any changes or modifications not expressly approved by the party responsible for compliance could void the user's authority to operate the equipment.

NOTE: This equipment has been tested and found to comply with the limits for a Class B digital device, pursuant to Part 15 of the FCC Rules. These limits are designed to provide reasonable protection against harmful interference in a residential installation. This equipment generates, uses and can radiate radio frequency energy and, if not installed and used in accordance with the instructions, may cause harmful interference to radio communications. However, there is no guarantee that interference will not occur in a particular installation. If this equipment does cause harmful interference to radio or television reception, which can be determined by turning the equipment off and on, the user is encouraged to try to correct the interference by one or more of the following measures:

- Reorient or relocate the receiving antenna.
- Increase the separation between the equipment and receiver--Connect the equipment into an outlet on a circuit different from that to which the receiver is connected.
- Consult the dealer or an experienced radio/TV technician for help. To maintain compliance with FCC's RF Exposure guidelines, This equipment should be installed and operated with minimum distance between 20cm the radiator your body: Use only the supplied antenna.

FCC Caution for Keyboard K902 and Mouse MQ3S

This device complies with part 15 of the FCC Rules. Operation is subject to the following two conditions: (1) This device may not cause harmful interference, and (2) this device must accept any interference received, including interference that may cause undesired operation.

Any Changes or modifications not expressly approved by the party responsible for compliance could void the user's authority to operate the equipment.

Note: This equipment has been tested and found to comply with the limits for a Class B digital device, pursuant to part 15 of the FCC Rules. These limits are designed to provide reasonable protection against harmful interference in a residential installation. This equipment generates uses and can radiate radio frequency energy and, if not installed and used in accordance with the instructions, may cause harmful interference to radio communications. However, there is no guarantee that interference will not occur in a particular installation. If this equipment does cause harmful interference to radio or television reception, which can be determined by turning the equipment off and on, the user is encouraged to try to correct the interference by one or more of the following measures:

Reorient or relocate the receiving antenna. Increase the separation between the equipment and receiver. Connect the equipment into an outlet on a circuit different from that to which the receiver is connected. Consult the dealer or an experienced radio/TV technician for help.

The device has been evaluated to meet general RF exposure requirement. The device can be used in portable exposure condition without restriction.

The PC apparatus contains the keyboard FCC ID:2AVRVK902 and mouse FCC ID:2AVRVMQ3S