

1. Antenna Description:

Antenna type	Internal antenna
Model	DRPTV750SM-BT
Frequency range	2400-2500MHz
Manufacturer	Shenzhen Weihejia Eletronic Technology Co.,LTD
Address	1001 Gayley Avenue P.O. Box 24857, Los Angeles, California 90024, United States
ANT Peak Gain	2.00 dBi

2. Antenna Photo:

Length: 62.55mm
Width: 2.99mm



3. Test Equipment & Conditions

3.1 Test instrument

VSWR is tested using Agilent E5071B connected to a hand mechanism, and the status is free space.

3.2 Test environment and methods

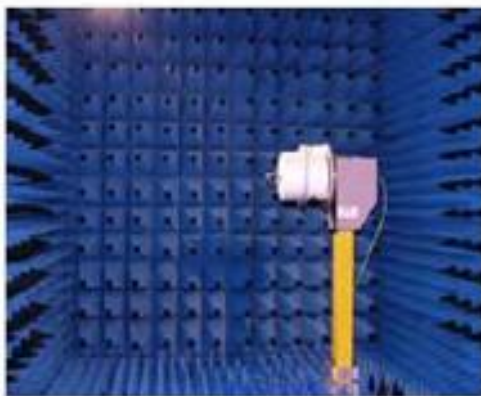
Dark room specifications: ETS-743

TD-SCDMA test equipment: StarPoint SP6010/Agilent 8960

LTE-TDD/FDD-SCDMA test equipment: StarPoint SP8011/CMW500

WCDMA/GSM/CDMA test equipment: Agilent 8960

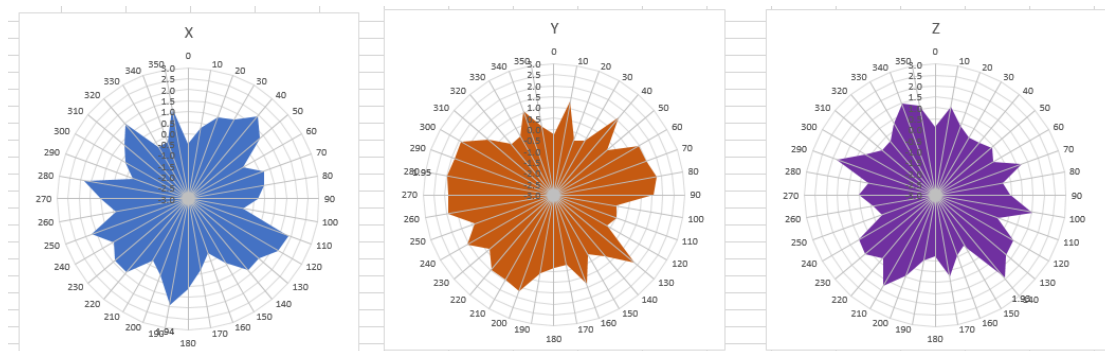
Passive efficiency testing equipment: Agilent Technologies E5071B



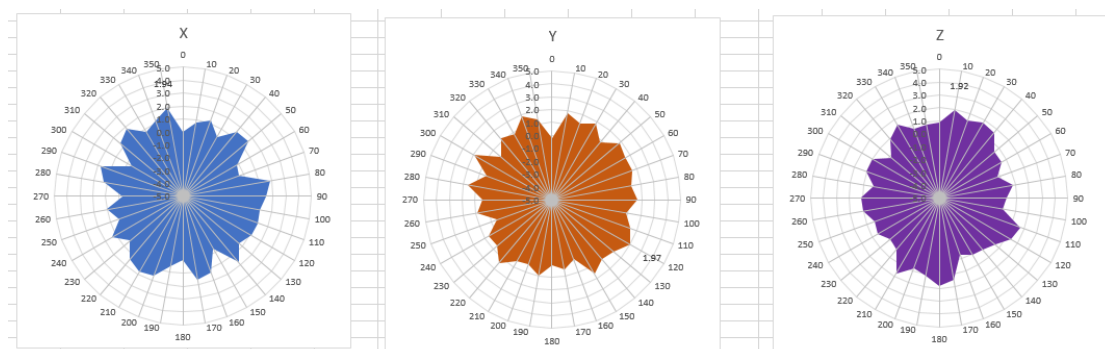
4 . Antenna Radiation Pattern



2400MHz



2450MHz



2500MHz

