



PROFESSIONAL WIRELESS THERMAL PRINTER

Quick Start Guide



Download the free app and start
printing instantly! Scan this QR Code or visit
www.coreinnovationsinc.com/drivers/

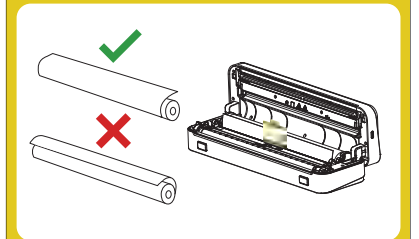
CTP100LG

Getting Started

Please read instruction card for proper setup
before use.

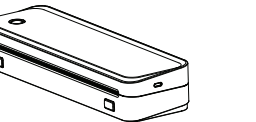
PLEASE FOLLOW INSTRUCTIONS BELOW TO CORRECTLY LOAD PAPER ROLLS.

1. Look for the instruction tab on the paper roll.
2. Place the paper roll as indicated on label.
3. Carefully close the lid.



In the Box

1 Thermal Printer



USB-C® Charging Cable



USB-C® Adapter



Quick Start
Guide



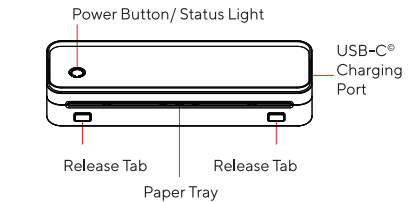
Warranty
Card



Instruction
Card



Device Overview



Indicator Light

- Solid Green Light:
Device is ready
- Blinking Red Light:
Low Battery
- Solid Red Light:
**Charging/ Out of paper/
Overheated/ Output tray is open**

Load Printer Paper



Press the release tabs
to open the printer



Locate the instruction tab
on paper roll and place as
shown



Pull 1" inch of the paper roll
and place outside of the
printer for optimal printing.
Close the lid



Pull the paper away from
you and tear at a 45° angle

Note: Do not touch the printer head. Please use a
compressed air duster (sold separately) to gently remove
dust particles and debris.

Bluetooth® Setup

Fully charge before initial use and make sure to disconnect
from other nearby paired devices



1. Press and hold the button for 3
seconds to power on
2. Download the free CorePrint app by
searching for it on the App Store® or Google
Play™. No sign-up necessary



3. From the home page tap "+"
4. Tap "Professional Printer"
5. On the list of Bluetooth® devices page look for
"Professional Printer" and tap to connect

Windows™/MacOS® Setup

1. Download the Windows™ or MacOS®
printer driver at:

www.coreinnovationsinc.com/drivers

2. Install the downloaded driver and follow the
on-screen instructions

3. Connect your printer using the included
USB-C® cable (use the USB-C® adapter if
needed)

4. Start printing by selecting "CTP100LG"
from the printer list when prompted

Product Specifications

Battery Capacity : 2600mAh
Printing Type: Inkless Thermal
Print Color: Black
Bluetooth® Version: 5.2
Image Quality: 203 DPI
Charging Input: USB-C®

Important Safety Warning

- Avoid using or storing in the following locations. Damage
to the printer may be caused.
 - Do not leave in an exposed area with direct sunlight
or near heat-generating equipment.
 - Do not leave in an area where temperature or humidity is
excessively high or low, or changes radically.
 - Do not leave in an area exposed to water or liquid.
- Avoid dropping or harsh impact to the printer, as damage
may be caused.
- Avoid entry of foreign objects or materials, as damage
may be caused.
- When cleaning do not use volatile liquid (thinner, benzene,
etc.) or wet cloth. Deterioration or discoloration may
occur. Use a dry, soft cloth.
- Do not move the printer or place harsh impact on printer
while in printing or standby operation. Printer power may
disconnect and print data may be lost.
- When charging your device, gently connect or
disconnect charging cable to avoid damage.
- Improper charging can result in damaged printing.
- Please mind the paper cutting teeth. This area is sharp
and can cause harm if not careful.
- This device contains small parts and is not recommended
for kids under 3 years old.
- Adult supervision is recommended for kids under 13
years old. This equipment is not suitable for use in
locations where children are likely to be present.
- Disassembly of printer will cause damage and void
warranty.
- If severe bulging occurs to battery, please discontinue use.

FCC Caution

This device complies with Part 15 of the FCC Rules.
Operation is subject to the following two conditions: (1)
This device may not cause harmful interference, and (2)
this device must accept any interference received,
including interference that may cause undesired
operation. Any changes or modifications not expressly
approved by the party responsible for compliance could
void the user's authority to operate the equipment.
Note: This equipment has been tested and found to
comply with the limits for a Class B digital device,
pursuant to Part 15 of the FCC Rules. These limits are
designed to provide reasonable protection against
harmful interference in a residential installation. This
equipment generates, uses and can radiate radio
frequency energy and, if not installed and used in
accordance with the instructions, may cause harmful
interference to radio communications. However, there is
no guarantee that interference will not occur in a
particular installation. If this equipment does cause
harmful interference to radio or television reception,
which can be determined by turning the equipment off
and on, the user is encouraged to try to correct the
interference by one or more of the following measures:

- Reorient or relocate the receiving antenna.
- Increase the separation between the equipment and
receiver.
- Connect the equipment into an outlet on a circuit
different from that to which the receiver is connected.
- Consult the dealer or an experienced radio/TV
technician for help.

The device has been evaluated to meet general RF
exposure requirement. The device can be used in
portable exposure condition without restriction.

Need Help?

Email us at support@dpaudiovideo.zendesk.com or
call us at **1-833-909-CORE (1-833-909-2673)**. We are
available Monday - Friday, 9am-5pm PST, except major
holidays.

For information on recycling, please visit
<https://www.coreinnovationsinc.com/support>

© 2025 Core Innovations. All rights reserved. Core
Innovations is a trademark of DP Audio Video.
© 2025 Bluetooth SIG, Inc. All rights reserved. The
Bluetooth® trademarks including the BLUETOOTH word
mark, the figure mark (the runic "B" and oval design), and
the combination mark (Bluetooth word mark and
design) are owned by the Bluetooth SIG. These and all
third party trademarks are the property of their respective
owners. Used with permission. © 2025 Google Inc. All
rights reserved. Google, Android and Google Play are
trademarks of Google LLC. © 2025 Apple Inc. All rights
reserved. Apple and App Store are trademarks of Apple
LLC.



FCC ID: 2AVRVCTP100LG01

WARNING: Cancer and Reproductive Harm
www.P65Warnings.ca.gov

